

KERR-MCGEE OIL & GAS ONSHORE LP_1



Location: Compass Import Slot: SLOT#06 GE POWERS 3C-26HZ
Field: WELD COUNTY (UTM (ZONE 13)/NAD83/TRUE NORTH) Well: GE POWERS 3C-26HZ
Facility: 2N-65W-23 Offsets Wellbore: GE POWERS 3C-26HZ PWB

Plot reference wellpath is GE POWERS 3C-26HZ (PERMIT REV-3) PWB

True vertical depths are referenced to PERMIT (17'KB) (RKB) Grid System: NAD83 / UTM Zone 13 North, US feet
Measured depths are referenced to PERMIT (17'KB) (RKB) North Reference: True north
PERMIT (17'KB) (RKB) to Mean Sea Level: 4907 feet Scale: Grid distance
Mean Sea Level to Mud line (At Slot: SLOT#06 GE POWERS 3C-26HZ): 0 feet Depths are in feet
Coordinates are in feet referenced to Slot Created by: precain on 2/4/2015

Location Information

Facility Name			Grid East (US ft)	Grid North (US ft)	Latitude	Longitude
2N-65W-23 Offsets			1743038.821	14574304.203	40°07'48.198"N	104°37'58.303"W
Slot	Local N (ft)	Local E (ft)	Grid East (US ft)	Grid North (US ft)	Latitude	Longitude
SLOT#06 GE POWERS 3C-26HZ	68.09	-766.43	1742272.113	14574369.126	40°07'48.871"N	104°38'08.174"W
PERMIT (17'KB) (RKB) to Mud line (At Slot: SLOT#06 GE POWERS 3C-26HZ)					4907ft	
Mean Sea Level to Mud line (At Slot: SLOT#06 GE POWERS 3C-26HZ)					0ft	
PERMIT (17'KB) (RKB) to Mean Sea Level					4907ft	

Survey Program

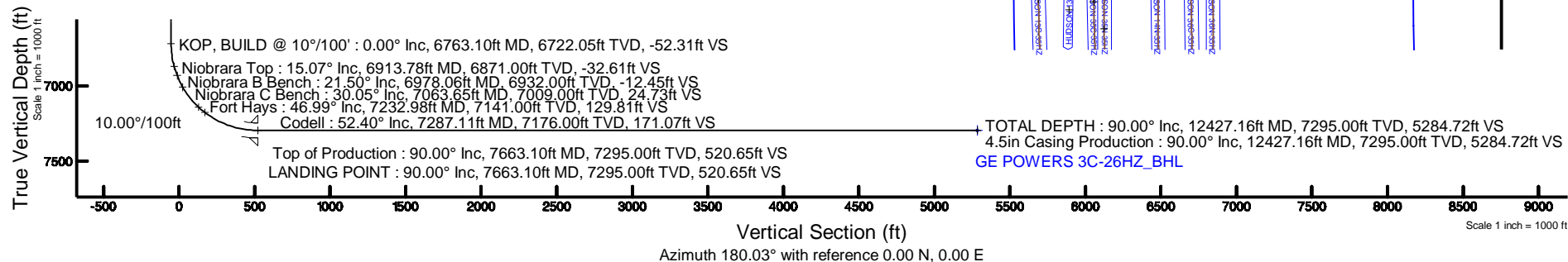
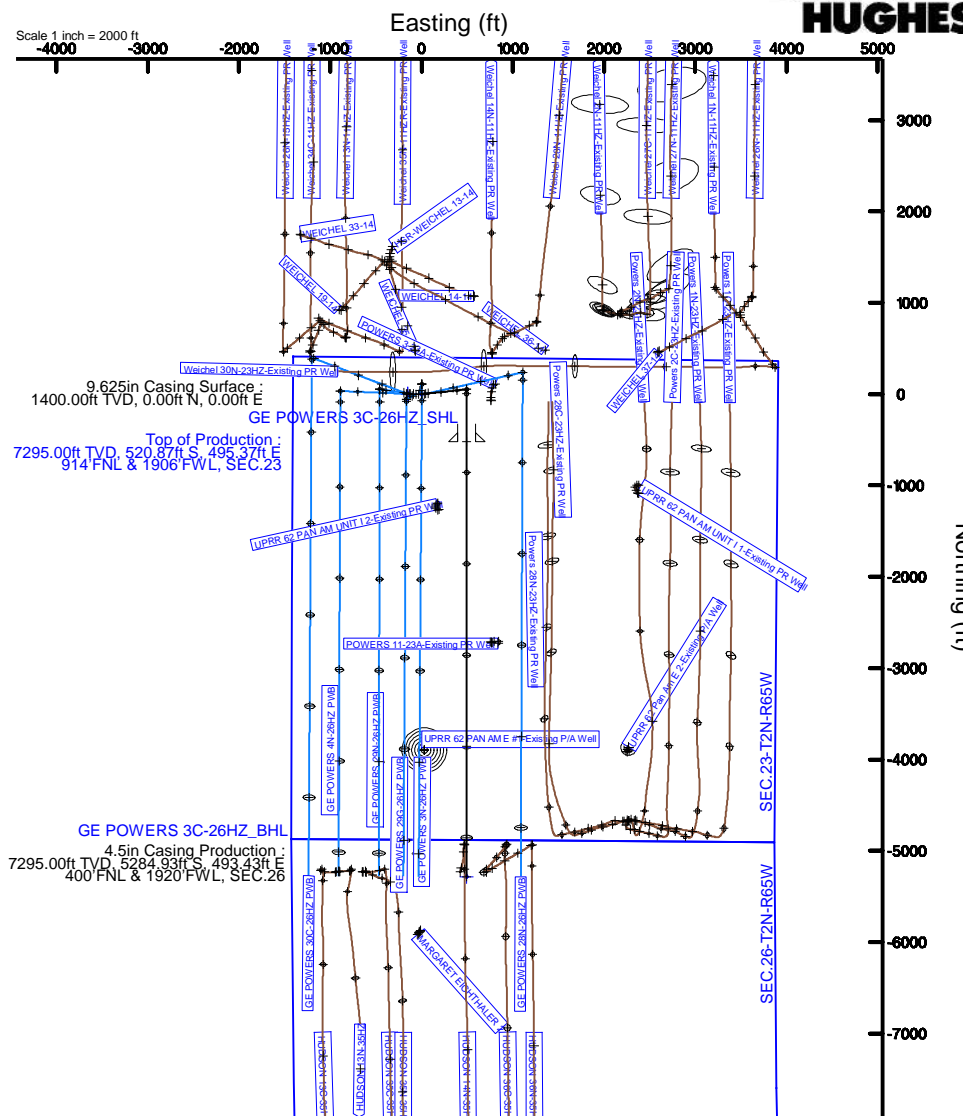
Start MD (ft)	End MD (ft)	Tool	Model	Log Name/Comment	Wellbore
17.00	15000.00	ISOWSA MWD, Rev. 2, axial magnetic correction	ISOWSA MWD, Rev. 2, axial magnetic correction (Standard) (MagVAR IFR Wattenberg)		GE POWERS 3C-26HZ PWB

Well Profile Data

Design Comment	MD (ft)	Inc (°)	Az (°)	TVD (ft)	Local N (ft)	Local E (ft)	DLS (°/100ft)	VS (ft)
TIE-ON	17.00	0.000	84.000	17.00	0.00	0.00	0.00	0.00
BEGIN NUDGE	1500.00	0.000	84.000	1500.00	0.00	0.00	0.00	0.00
END NUDGE	2000.00	10.000	84.000	1997.47	4.55	43.28	2.00	-4.57
BEGIN DROP	4368.52	10.000	84.000	4330.00	47.54	452.32	0.00	-47.74
END DROP	4868.52	0.000	180.023	4827.47	52.09	495.60	2.00	-52.31
KOP, BUILD @ 10°/100'	6763.10	0.000	180.023	6722.05	52.09	495.60	0.00	-52.31
LANDING POINT	7663.10	90.000	180.023	7295.00	-520.87	495.37	10.00	520.65
TOTAL DEPTH	12427.16	90.000	180.024	7295.00	-5284.93	493.43	0.00	5284.72

Targets

Name	MD (ft)	TVD (ft)	Local N (ft)	Local E (ft)	Grid East (US ft)	Grid North (US ft)	Latitude	Longitude
GE POWERS 3C-26HZ_SHL		4907.00	0.00	0.00	1742272.11	14574369.13	40°07'48.871"N	104°38'08.174"W
SEC.23-T2N-R65W		4907.00	1.11	-150.17	1742121.95	14574369.62	40°07'48.882"N	104°38'10.108"W
SEC.26-T2N-R65W		4907.00	1.11	-150.17	1742121.95	14574369.62	40°07'48.882"N	104°38'10.108"W
GE POWERS 3C-26HZ_BHL	12427.16	7295.00	-5284.93	493.43	1742787.20	14569086.27	40°06'56.624"N	104°38'01.820"W



REFERENCE WELLPATH IDENTIFICATION			
Operator	KERR-MCGEE OIL & GAS ONSHORE LP_1	Slot	SLOT#06 GE POWERS 3C-26HZ
Area	Compass Import	Well	GE POWERS 3C-26HZ
Field	WELD COUNTY (UTM (ZONE 13)/NAD83/TRUE NORTH)	Wellbore	GE POWERS 3C-26HZ PWB
Facility	2N-65W-23 Offsets		

REPORT SETUP INFORMATION			
Projection System	NAD83 / UTM Zone 13 North, US feet	Software System	WellArchitect® 4.1.1
North Reference	True	User	Precain
Scale	0.999612	Report Generated	4/24/2015 at 12:36:21 PM
Convergence at slot	0.23° East	Database/Source file	WellArchitectDC/GE_POWERS_3C-26HZ_PWB.xml

WELLPATH LOCATION						
	Local coordinates		Grid coordinates		Geographic coordinates	
	North[ft]	East[ft]	Easting[US ft]	Northing[US ft]	Latitude	Longitude
Slot Location	68.09	-766.43	1742272.11	14574369.13	40°07'48.871"N	104°38'08.174"W
Facility Reference Pt			1743038.82	14574304.20	40°07'48.198"N	104°37'58.303"W
Field Reference Pt			1700626.56	14568707.73	40°06'54.245"N	104°47'04.711"W

WELLPATH DATUM			
Calculation method	Minimum curvature	PERMIT (17'KB) (RKB) to 2N-65W-23 Offsets vertical datum	4907.00ft
Horizontal Reference Pt	Slot	PERMIT (17'KB) (RKB) to Mean Sea Level	4907.00ft
Vertical Reference Pt	PERMIT (17'KB) (RKB)	PERMIT (17'KB) (RKB) to Mud Line at Slot (SLOT#06 GE POWERS 3C-26HZ)	4907.00ft
MD Reference Pt	PERMIT (17'KB) (RKB)	Section Origin	N 0.00, E 0.00 ft
Field Vertical Reference	Mean Sea Level	Section Azimuth	180.03°

REFERENCE WELLPATH IDENTIFICATION			
Operator	KERR-MCGEE OIL & GAS ONSHORE LP_1	Slot	SLOT#06 GE POWERS 3C-26HZ
Area	Compass Import	Well	GE POWERS 3C-26HZ
Field	WELD COUNTY (UTM (ZONE 13)/NAD83/TRUE NORTH)	Wellbore	GE POWERS 3C-26HZ PWB
Facility	2N-65W-23 Offsets		

WELLPATH DATA (141 stations) † = interpolated/extrapolated station										
MD [ft]	Inclination [°]	Azimuth [°]	TVD [ft]	Vert Sect [ft]	North [ft]	East [ft]	Latitude	Longitude	DLS [°/100ft]	Comments
0.00†	0.000	84.000	0.00	0.00	0.00	0.00	40°07'48.871"N	104°38'08.174"W	0.00	
17.00	0.000	84.000	17.00	0.00	0.00	0.00	40°07'48.871"N	104°38'08.174"W	0.00	TIE-ON
117.00†	0.000	84.000	117.00	0.00	0.00	0.00	40°07'48.871"N	104°38'08.174"W	0.00	
217.00†	0.000	84.000	217.00	0.00	0.00	0.00	40°07'48.871"N	104°38'08.174"W	0.00	
317.00†	0.000	84.000	317.00	0.00	0.00	0.00	40°07'48.871"N	104°38'08.174"W	0.00	
417.00†	0.000	84.000	417.00	0.00	0.00	0.00	40°07'48.871"N	104°38'08.174"W	0.00	
517.00†	0.000	84.000	517.00	0.00	0.00	0.00	40°07'48.871"N	104°38'08.174"W	0.00	
617.00†	0.000	84.000	617.00	0.00	0.00	0.00	40°07'48.871"N	104°38'08.174"W	0.00	
717.00†	0.000	84.000	717.00	0.00	0.00	0.00	40°07'48.871"N	104°38'08.174"W	0.00	
817.00†	0.000	84.000	817.00	0.00	0.00	0.00	40°07'48.871"N	104°38'08.174"W	0.00	
917.00†	0.000	84.000	917.00	0.00	0.00	0.00	40°07'48.871"N	104°38'08.174"W	0.00	
1017.00†	0.000	84.000	1017.00	0.00	0.00	0.00	40°07'48.871"N	104°38'08.174"W	0.00	
1117.00†	0.000	84.000	1117.00	0.00	0.00	0.00	40°07'48.871"N	104°38'08.174"W	0.00	
1217.00†	0.000	84.000	1217.00	0.00	0.00	0.00	40°07'48.871"N	104°38'08.174"W	0.00	
1317.00†	0.000	84.000	1317.00	0.00	0.00	0.00	40°07'48.871"N	104°38'08.174"W	0.00	
1417.00†	0.000	84.000	1417.00	0.00	0.00	0.00	40°07'48.871"N	104°38'08.174"W	0.00	
1500.00	0.000	84.000	1500.00	0.00	0.00	0.00	40°07'48.871"N	104°38'08.174"W	0.00	BEGIN NUDGE
1517.00†	0.340	84.000	1517.00	-0.01	0.01	0.05	40°07'48.871"N	104°38'08.173"W	2.00	
1617.00†	2.340	84.000	1616.97	-0.25	0.25	2.38	40°07'48.873"N	104°38'08.143"W	2.00	
1717.00†	4.340	84.000	1716.79	-0.86	0.86	8.17	40°07'48.879"N	104°38'08.069"W	2.00	
1817.00†	6.340	84.000	1816.35	-1.84	1.83	17.42	40°07'48.889"N	104°38'07.950"W	2.00	
1917.00†	8.340	84.000	1915.53	-3.18	3.17	30.13	40°07'48.902"N	104°38'07.786"W	2.00	
2000.00	10.000	84.000	1997.47	-4.57	4.55	43.28	40°07'48.916"N	104°38'07.617"W	2.00	END NUDGE
2017.00†	10.000	84.000	2014.21	-4.88	4.86	46.22	40°07'48.919"N	104°38'07.579"W	0.00	
2117.00†	10.000	84.000	2112.69	-6.70	6.67	63.49	40°07'48.937"N	104°38'07.356"W	0.00	
2217.00†	10.000	84.000	2211.17	-8.52	8.49	80.76	40°07'48.955"N	104°38'07.134"W	0.00	
2317.00†	10.000	84.000	2309.65	-10.35	10.30	98.03	40°07'48.973"N	104°38'06.911"W	0.00	
2417.00†	10.000	84.000	2408.13	-12.17	12.12	115.30	40°07'48.991"N	104°38'06.689"W	0.00	
2517.00†	10.000	84.000	2506.61	-13.99	13.93	132.57	40°07'49.009"N	104°38'06.467"W	0.00	
2617.00†	10.000	84.000	2605.09	-15.81	15.75	149.84	40°07'49.027"N	104°38'06.244"W	0.00	
2717.00†	10.000	84.000	2703.57	-17.64	17.56	167.11	40°07'49.045"N	104°38'06.022"W	0.00	
2817.00†	10.000	84.000	2802.05	-19.46	19.38	184.38	40°07'49.063"N	104°38'05.799"W	0.00	
2917.00†	10.000	84.000	2900.53	-21.28	21.19	201.65	40°07'49.081"N	104°38'05.577"W	0.00	
3017.00†	10.000	84.000	2999.01	-23.10	23.01	218.92	40°07'49.098"N	104°38'05.355"W	0.00	
3117.00†	10.000	84.000	3097.50	-24.93	24.82	236.19	40°07'49.116"N	104°38'05.132"W	0.00	
3217.00†	10.000	84.000	3195.98	-26.75	26.64	253.46	40°07'49.134"N	104°38'04.910"W	0.00	
3317.00†	10.000	84.000	3294.46	-28.57	28.45	270.73	40°07'49.152"N	104°38'04.687"W	0.00	
3417.00†	10.000	84.000	3392.94	-30.40	30.27	288.00	40°07'49.170"N	104°38'04.465"W	0.00	
3517.00†	10.000	84.000	3491.42	-32.22	32.08	305.27	40°07'49.188"N	104°38'04.242"W	0.00	
3617.00†	10.000	84.000	3589.90	-34.04	33.90	322.54	40°07'49.206"N	104°38'04.020"W	0.00	
3717.00†	10.000	84.000	3688.38	-35.86	35.71	339.80	40°07'49.224"N	104°38'03.798"W	0.00	
3817.00†	10.000	84.000	3786.86	-37.69	37.53	357.07	40°07'49.242"N	104°38'03.575"W	0.00	
3917.00†	10.000	84.000	3885.34	-39.51	39.35	374.34	40°07'49.260"N	104°38'03.353"W	0.00	
4017.00†	10.000	84.000	3983.82	-41.33	41.16	391.61	40°07'49.278"N	104°38'03.130"W	0.00	
4117.00†	10.000	84.000	4082.30	-43.15	42.98	408.88	40°07'49.296"N	104°38'02.908"W	0.00	

REFERENCE WELLPATH IDENTIFICATION			
Operator	KERR-MCGEE OIL & GAS ONSHORE LP_1	Slot	SLOT#06 GE POWERS 3C-26HZ
Area	Compass Import	Well	GE POWERS 3C-26HZ
Field	WELD COUNTY (UTM (ZONE 13)/NAD83/TRUE NORTH)	Wellbore	GE POWERS 3C-26HZ PWB
Facility	2N-65W-23 Offsets		

WELLPATH DATA (141 stations) † = interpolated/extrapolated station										
MD [ft]	Inclination [°]	Azimuth [°]	TVD [ft]	Vert Sect [ft]	North [ft]	East [ft]	Latitude	Longitude	DLS [°/100ft]	Comments
4217.00†	10.000	84.000	4180.78	-44.98	44.79	426.15	40°07'49.314"N	104°38'02.686"W	0.00	
4317.00†	10.000	84.000	4279.26	-46.80	46.61	443.42	40°07'49.332"N	104°38'02.463"W	0.00	
4368.52	10.000	84.000	4330.00	-47.74	47.54	452.32	40°07'49.341"N	104°38'02.349"W	0.00	BEGIN DROP
4417.00†	9.030	84.000	4377.81	-48.58	48.38	460.29	40°07'49.349"N	104°38'02.246"W	2.00	
4517.00†	7.030	84.000	4476.83	-50.05	49.84	474.18	40°07'49.364"N	104°38'02.067"W	2.00	
4531.27†	6.745	84.000	4491.00	-50.23	50.02	475.89	40°07'49.365"N	104°38'02.045"W	2.00	Sussex
4617.00†	5.030	84.000	4576.27	-51.15	50.94	484.63	40°07'49.375"N	104°38'01.932"W	2.00	
4717.00†	3.030	84.000	4676.02	-51.89	51.67	491.62	40°07'49.382"N	104°38'01.842"W	2.00	
4817.00†	1.030	84.000	4775.95	-52.26	52.04	495.14	40°07'49.385"N	104°38'01.797"W	2.00	
4868.52	0.000	180.023	4827.47	-52.31	52.09	495.60	40°07'49.386"N	104°38'01.791"W	2.00	END DROP
4917.00†	0.000	180.023	4875.95	-52.31	52.09	495.60	40°07'49.386"N	104°38'01.791"W	0.00	
5017.00†	0.000	180.023	4975.95	-52.31	52.09	495.60	40°07'49.386"N	104°38'01.791"W	0.00	
5117.00†	0.000	180.023	5075.95	-52.31	52.09	495.60	40°07'49.386"N	104°38'01.791"W	0.00	
5217.00†	0.000	180.023	5175.95	-52.31	52.09	495.60	40°07'49.386"N	104°38'01.791"W	0.00	
5317.00†	0.000	180.023	5275.95	-52.31	52.09	495.60	40°07'49.386"N	104°38'01.791"W	0.00	
5417.00†	0.000	180.023	5375.95	-52.31	52.09	495.60	40°07'49.386"N	104°38'01.791"W	0.00	
5517.00†	0.000	180.023	5475.95	-52.31	52.09	495.60	40°07'49.386"N	104°38'01.791"W	0.00	
5617.00†	0.000	180.023	5575.95	-52.31	52.09	495.60	40°07'49.386"N	104°38'01.791"W	0.00	
5717.00†	0.000	180.023	5675.95	-52.31	52.09	495.60	40°07'49.386"N	104°38'01.791"W	0.00	
5817.00†	0.000	180.023	5775.95	-52.31	52.09	495.60	40°07'49.386"N	104°38'01.791"W	0.00	
5917.00†	0.000	180.023	5875.95	-52.31	52.09	495.60	40°07'49.386"N	104°38'01.791"W	0.00	
6017.00†	0.000	180.023	5975.95	-52.31	52.09	495.60	40°07'49.386"N	104°38'01.791"W	0.00	
6117.00†	0.000	180.023	6075.95	-52.31	52.09	495.60	40°07'49.386"N	104°38'01.791"W	0.00	
6217.00†	0.000	180.023	6175.95	-52.31	52.09	495.60	40°07'49.386"N	104°38'01.791"W	0.00	
6317.00†	0.000	180.023	6275.95	-52.31	52.09	495.60	40°07'49.386"N	104°38'01.791"W	0.00	
6417.00†	0.000	180.023	6375.95	-52.31	52.09	495.60	40°07'49.386"N	104°38'01.791"W	0.00	
6430.05†	0.000	180.023	6389.00	-52.31	52.09	495.60	40°07'49.386"N	104°38'01.791"W	0.00	Sharon Springs
6517.00†	0.000	180.023	6475.95	-52.31	52.09	495.60	40°07'49.386"N	104°38'01.791"W	0.00	
6617.00†	0.000	180.023	6575.95	-52.31	52.09	495.60	40°07'49.386"N	104°38'01.791"W	0.00	
6717.00†	0.000	180.023	6675.95	-52.31	52.09	495.60	40°07'49.386"N	104°38'01.791"W	0.00	
6763.10	0.000	180.023	6722.05	-52.31	52.09	495.60	40°07'49.386"N	104°38'01.791"W	0.00	KOP, BUILD @ 10°/100'
6817.00†	5.390	180.023	6775.87	-49.77	49.56	495.60	40°07'49.361"N	104°38'01.791"W	10.00	
6913.78†	15.069	180.023	6871.00	-32.61	32.39	495.60	40°07'49.191"N	104°38'01.791"W	10.00	Niobrara Top
6917.00†	15.390	180.023	6874.10	-31.76	31.54	495.60	40°07'49.183"N	104°38'01.791"W	10.00	
6978.06†	21.496	180.023	6932.00	-12.45	12.24	495.59	40°07'48.992"N	104°38'01.791"W	10.00	Niobrara B Bench
7017.00†	25.390	180.023	6967.72	3.04	-3.25	495.58	40°07'48.839"N	104°38'01.791"W	10.00	
7063.65†	30.055	180.023	7009.00	24.73	-24.95	495.57	40°07'48.624"N	104°38'01.791"W	10.00	Niobrara C Bench
7117.00†	35.390	180.023	7053.87	53.56	-53.78	495.56	40°07'48.339"N	104°38'01.792"W	10.00	
7217.00†	45.390	180.023	7129.94	118.28	-118.49	495.54	40°07'47.700"N	104°38'01.792"W	10.00	
7232.98†	46.988	180.023	7141.00	129.81	-130.03	495.53	40°07'47.586"N	104°38'01.792"W	10.00	Fort Hays
7287.11†	52.401	180.023	7176.00	171.07	-171.29	495.51	40°07'47.178"N	104°38'01.792"W	10.00	Codell
7317.00†	55.390	180.023	7193.61	195.22	-195.44	495.50	40°07'46.939"N	104°38'01.792"W	10.00	
7417.00†	65.390	180.023	7242.96	282.05	-282.27	495.47	40°07'46.080"N	104°38'01.793"W	10.00	
7517.00†	75.390	180.023	7276.48	376.13	-376.35	495.43	40°07'45.150"N	104°38'01.793"W	10.00	
7617.00†	85.390	180.023	7293.15	474.60	-474.82	495.39	40°07'44.177"N	104°38'01.794"W	10.00	

REFERENCE WELLPATH IDENTIFICATION			
Operator	KERR-MCGEE OIL & GAS ONSHORE LP_1	Slot	SLOT#06 GE POWERS 3C-26HZ
Area	Compass Import	Well	GE POWERS 3C-26HZ
Field	WELD COUNTY (UTM (ZONE 13)/NAD83/TRUE NORTH)	Wellbore	GE POWERS 3C-26HZ PWB
Facility	2N-65W-23 Offsets		

WELLPATH DATA (141 stations) † = interpolated/extrapolated station										
MD [ft]	Inclination [°]	Azimuth [°]	TVD [ft]	Vert Sect [ft]	North [ft]	East [ft]	Latitude	Longitude	DLS [°/100ft]	Comments
7663.10	90.000	180.023	7295.00	520.65	-520.87	495.37	40°07'43.722"N	104°38'01.794"W	10.00	LANDING POINT
7663.10†	90.000	180.023	7295.00	520.65	-520.87	495.37	40°07'43.722"N	104°38'01.794"W	0.00	Top of Production
7717.00†	90.000	180.023	7295.00	574.55	-574.77	495.35	40°07'43.189"N	104°38'01.794"W	0.00	
7817.00†	90.000	180.023	7295.00	674.55	-674.77	495.31	40°07'42.200"N	104°38'01.795"W	0.00	
7917.00†	90.000	180.023	7295.00	774.55	-774.77	495.27	40°07'41.212"N	104°38'01.796"W	0.00	
8017.00†	90.000	180.023	7295.00	874.55	-874.77	495.23	40°07'40.223"N	104°38'01.796"W	0.00	
8117.00†	90.000	180.023	7295.00	974.55	-974.77	495.19	40°07'39.234"N	104°38'01.797"W	0.00	
8217.00†	90.000	180.023	7295.00	1074.55	-1074.77	495.15	40°07'38.246"N	104°38'01.797"W	0.00	
8317.00†	90.000	180.023	7295.00	1174.55	-1174.77	495.11	40°07'37.257"N	104°38'01.798"W	0.00	
8417.00†	90.000	180.023	7295.00	1274.55	-1274.77	495.07	40°07'36.269"N	104°38'01.798"W	0.00	
8517.00†	90.000	180.023	7295.00	1374.55	-1374.77	495.03	40°07'35.280"N	104°38'01.799"W	0.00	
8617.00†	90.000	180.023	7295.00	1474.55	-1474.77	494.99	40°07'34.291"N	104°38'01.799"W	0.00	
8717.00†	90.000	180.023	7295.00	1574.55	-1574.77	494.95	40°07'33.303"N	104°38'01.800"W	0.00	
8817.00†	90.000	180.023	7295.00	1674.55	-1674.77	494.91	40°07'32.314"N	104°38'01.800"W	0.00	
8917.00†	90.000	180.023	7295.00	1774.55	-1774.77	494.87	40°07'31.326"N	104°38'01.801"W	0.00	
9017.00†	90.000	180.023	7295.00	1874.55	-1874.77	494.83	40°07'30.337"N	104°38'01.802"W	0.00	
9117.00†	90.000	180.023	7295.00	1974.55	-1974.77	494.79	40°07'29.348"N	104°38'01.802"W	0.00	
9217.00†	90.000	180.023	7295.00	2074.55	-2074.77	494.75	40°07'28.360"N	104°38'01.803"W	0.00	
9317.00†	90.000	180.023	7295.00	2174.55	-2174.77	494.71	40°07'27.371"N	104°38'01.803"W	0.00	
9417.00†	90.000	180.023	7295.00	2274.55	-2274.77	494.67	40°07'26.383"N	104°38'01.804"W	0.00	
9517.00†	90.000	180.023	7295.00	2374.55	-2374.77	494.62	40°07'25.394"N	104°38'01.804"W	0.00	
9617.00†	90.000	180.023	7295.00	2474.55	-2474.77	494.58	40°07'24.406"N	104°38'01.805"W	0.00	
9717.00†	90.000	180.023	7295.00	2574.55	-2574.77	494.54	40°07'23.417"N	104°38'01.805"W	0.00	
9817.00†	90.000	180.023	7295.00	2674.55	-2674.77	494.50	40°07'22.428"N	104°38'01.806"W	0.00	
9917.00†	90.000	180.023	7295.00	2774.55	-2774.77	494.46	40°07'21.440"N	104°38'01.806"W	0.00	
10017.00†	90.000	180.023	7295.00	2874.55	-2874.77	494.42	40°07'20.451"N	104°38'01.807"W	0.00	
10117.00†	90.000	180.023	7295.00	2974.55	-2974.77	494.38	40°07'19.463"N	104°38'01.808"W	0.00	
10217.00†	90.000	180.023	7295.00	3074.55	-3074.77	494.34	40°07'18.474"N	104°38'01.808"W	0.00	
10317.00†	90.000	180.023	7295.00	3174.55	-3174.77	494.30	40°07'17.485"N	104°38'01.809"W	0.00	
10417.00†	90.000	180.023	7295.00	3274.55	-3274.77	494.26	40°07'16.497"N	104°38'01.809"W	0.00	
10517.00†	90.000	180.023	7295.00	3374.55	-3374.77	494.22	40°07'15.508"N	104°38'01.810"W	0.00	
10617.00†	90.000	180.024	7295.00	3474.55	-3474.77	494.17	40°07'14.520"N	104°38'01.810"W	0.00	
10717.00†	90.000	180.024	7295.00	3574.55	-3574.77	494.13	40°07'13.531"N	104°38'01.811"W	0.00	
10817.00†	90.000	180.024	7295.00	3674.55	-3674.77	494.09	40°07'12.542"N	104°38'01.811"W	0.00	
10917.00†	90.000	180.024	7295.00	3774.55	-3774.77	494.05	40°07'11.554"N	104°38'01.812"W	0.00	
11017.00†	90.000	180.024	7295.00	3874.55	-3874.77	494.01	40°07'10.565"N	104°38'01.813"W	0.00	
11117.00†	90.000	180.024	7295.00	3974.55	-3974.77	493.97	40°07'09.577"N	104°38'01.813"W	0.00	
11217.00†	90.000	180.024	7295.00	4074.55	-4074.77	493.93	40°07'08.588"N	104°38'01.814"W	0.00	
11317.00†	90.000	180.024	7295.00	4174.55	-4174.77	493.89	40°07'07.599"N	104°38'01.814"W	0.00	
11417.00†	90.000	180.024	7295.00	4274.55	-4274.77	493.85	40°07'06.611"N	104°38'01.815"W	0.00	
11517.00†	90.000	180.024	7295.00	4374.55	-4374.77	493.80	40°07'05.622"N	104°38'01.815"W	0.00	
11617.00†	90.000	180.024	7295.00	4474.55	-4474.77	493.76	40°07'04.634"N	104°38'01.816"W	0.00	
11717.00†	90.000	180.024	7295.00	4574.55	-4574.77	493.72	40°07'03.645"N	104°38'01.816"W	0.00	
11817.00†	90.000	180.024	7295.00	4674.55	-4674.77	493.68	40°07'02.656"N	104°38'01.817"W	0.00	
11917.00†	90.000	180.024	7295.00	4774.55	-4774.77	493.64	40°07'01.668"N	104°38'01.818"W	0.00	

REFERENCE WELLPATH IDENTIFICATION			
Operator	KERR-MCGEE OIL & GAS ONSHORE LP_1	Slot	SLOT#06 GE POWERS 3C-26HZ
Area	Compass Import	Well	GE POWERS 3C-26HZ
Field	WELD COUNTY (UTM (ZONE 13)/NAD83/TRUE NORTH)	Wellbore	GE POWERS 3C-26HZ PWB
Facility	2N-65W-23 Offsets		

WELLPATH DATA (141 stations) † = interpolated/extrapolated station										
MD [ft]	Inclination [°]	Azimuth [°]	TVD [ft]	Vert Sect [ft]	North [ft]	East [ft]	Latitude	Longitude	DLS [°/100ft]	Comments
12017.00†	90.000	180.024	7295.00	4874.55	-4874.77	493.60	40°07'00.679"N	104°38'01.818"W	0.00	
12117.00†	90.000	180.024	7295.00	4974.55	-4974.77	493.56	40°06'59.691"N	104°38'01.819"W	0.00	
12217.00†	90.000	180.024	7295.00	5074.55	-5074.77	493.51	40°06'58.702"N	104°38'01.819"W	0.00	
12317.00†	90.000	180.024	7295.00	5174.55	-5174.77	493.47	40°06'57.713"N	104°38'01.820"W	0.00	
12417.00†	90.000	180.024	7295.00	5274.55	-5274.77	493.43	40°06'56.725"N	104°38'01.820"W	0.00	
12427.16	90.000	180.024	7295.00†	5284.72	-5284.93	493.43	40°06'56.624"N	104°38'01.820"W	0.00	TOTAL DEPTH

HOLE & CASING SECTIONS									
- Ref Wellbore: GE POWERS 3C-26HZ PWB					Ref Wellpath: GE POWERS 3C-26HZ (PERMIT REV-3) PWP				
String/Diameter	Start MD [ft]	End MD [ft]	Interval [ft]	Start TVD [ft]	End TVD [ft]	Start N/S [ft]	Start E/W [ft]	End N/S [ft]	End E/W [ft]
13.5in Open Hole	17.00	1400.00	1383.00	17.00	1400.00	0.00	0.00	0.00	0.00
9.625in Casing Surface	17.00	1400.00	1383.00	17.00	1400.00	0.00	0.00	0.00	0.00
7.875in Open Hole	1400.00	12427.16	11027.16	1400.00	7295.00	0.00	0.00	-5284.93	493.43
5.5in Casing Production	17.00	12427.16	12410.16	17.00	7295.00	0.00	0.00	-5284.93	493.43

TARGETS									
Name	MD [ft]	TVD [ft]	North [ft]	East [ft]	Grid East [US ft]	Grid North [US ft]	Latitude	Longitude	Shape
GE POWERS 3C-26HZ_SHL		4907.00	0.00	0.00	1742272.11	14574369.13	40°07'48.871"N	104°38'08.174"W	point
SEC.23-T2N-R65W		4907.00	1.11	-150.17	1742121.95	14574369.62	40°07'48.882"N	104°38'10.108"W	polygon
SEC.26-T2N-R65W		4907.00	1.11	-150.17	1742121.95	14574369.62	40°07'48.882"N	104°38'10.108"W	polygon
1) GE POWERS 3C-26HZ_BHL	12427.16	7295.00	-5284.93	493.43	1742787.20	14569086.27	40°06'56.624"N	104°38'01.820"W	point

SURVEY PROGRAM -				
Ref Wellbore: GE POWERS 3C-26HZ PWB		Ref Wellpath: GE POWERS 3C-26HZ (PERMIT REV-3) PWP		
Start MD [ft]	End MD [ft]	Positional Uncertainty Model	Log Name/Comment	Wellbore
17.00	15000.00	ISCWSA MWD, Rev. 2, axial magnetic correction (Standard) (MagVAR IFR Wattenberg)		GE POWERS 3C-26HZ PWB

REFERENCE WELLPATH IDENTIFICATION			
Operator	KERR-MCGEE OIL & GAS ONSHORE LP_1	Slot	SLOT#06 GE POWERS 3C-26HZ
Area	Compass Import	Well	GE POWERS 3C-26HZ
Field	WELD COUNTY (UTM (ZONE 13)/NAD83/TRUE NORTH)	Wellbore	GE POWERS 3C-26HZ PWB
Facility	2N-65W-23 Offsets		

WELLPATH COMMENTS					
MD [ft]	Inclination [°]	Azimuth [°]	TVD [ft]	Comment	
4531.27	6.745	84.000	4491.00	Sussex	
6430.05	0.000	180.023	6389.00	Sharon Springs	
6913.78	15.069	180.023	6871.00	Niobrara Top	
6978.06	21.496	180.023	6932.00	Niobrara B Bench	
7063.65	30.055	180.023	7009.00	Niobrara C Bench	
7232.98	46.988	180.023	7141.00	Fort Hays	
7287.11	52.401	180.023	7176.00	Codell	
7663.10	90.000	180.023	7295.00	Top of Production	

DESIGN COMMENTS					
MD [ft]	Inclination [°]	Azimuth [°]	TVD [ft]	Comment	
17.00	0.000	84.000	17.00	TIE-ON	
1500.00	0.000	84.000	1500.00	BEGIN NUDGE	
2000.00	10.000	84.000	1997.47	END NUDGE	
4368.52	10.000	84.000	4330.00	BEGIN DROP	
4868.52	0.000	180.023	4827.47	END DROP	
6763.10	0.000	180.023	6722.05	KOP, BUILD @ 10°/100'	
7663.10	90.000	180.023	7295.00	LANDING POINT	
12427.16	90.000	180.024	7295.00	TOTAL DEPTH	