

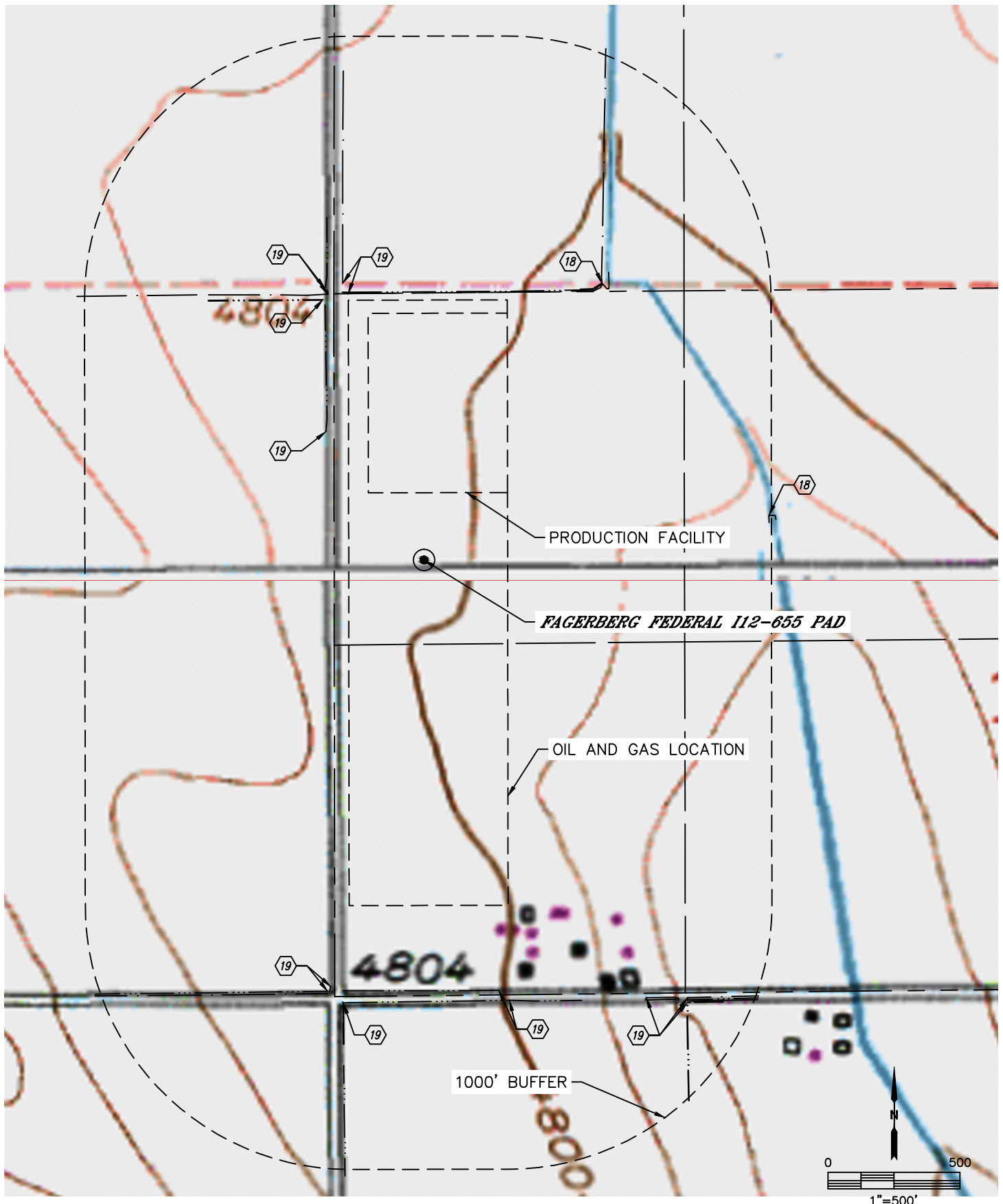


Lat40°, Inc. 6250 W. 10th Street, Unit 2, Greeley, CO 970-515-5294

# HYDROLOGY MAP

## FAGERBERG FEDERAL I12-655 PAD

SECTION: 12  
TOWNSHIP: 6N  
RANGE: 66W  
6TH. P.M.  
WELD COUNTY, CO





Lat40°, Inc. 6250 W. 10th Street, Unit 2, Greeley, CO 970-515-5294

**HYDROLOGY MAP**  
**FAGERBERG FEDERAL I12-655 PAD**

SECTION: 12  
TOWNSHIP: 6N  
RANGE: 66W  
6TH. P.M.  
WELD COUNTY, CO

MEASURED FROM EDGE OF OIL AND GAS LOCATION

- ⑈ GRAHAM SEEP CANAL 365' NE, 991' E
- ⑈ DITCH 25' N, 81', 69' & 100' NW, 85' & 97' W, 315', 335' & 371' SW,  
322' & 360' S, 631', 765' & 775' SE