

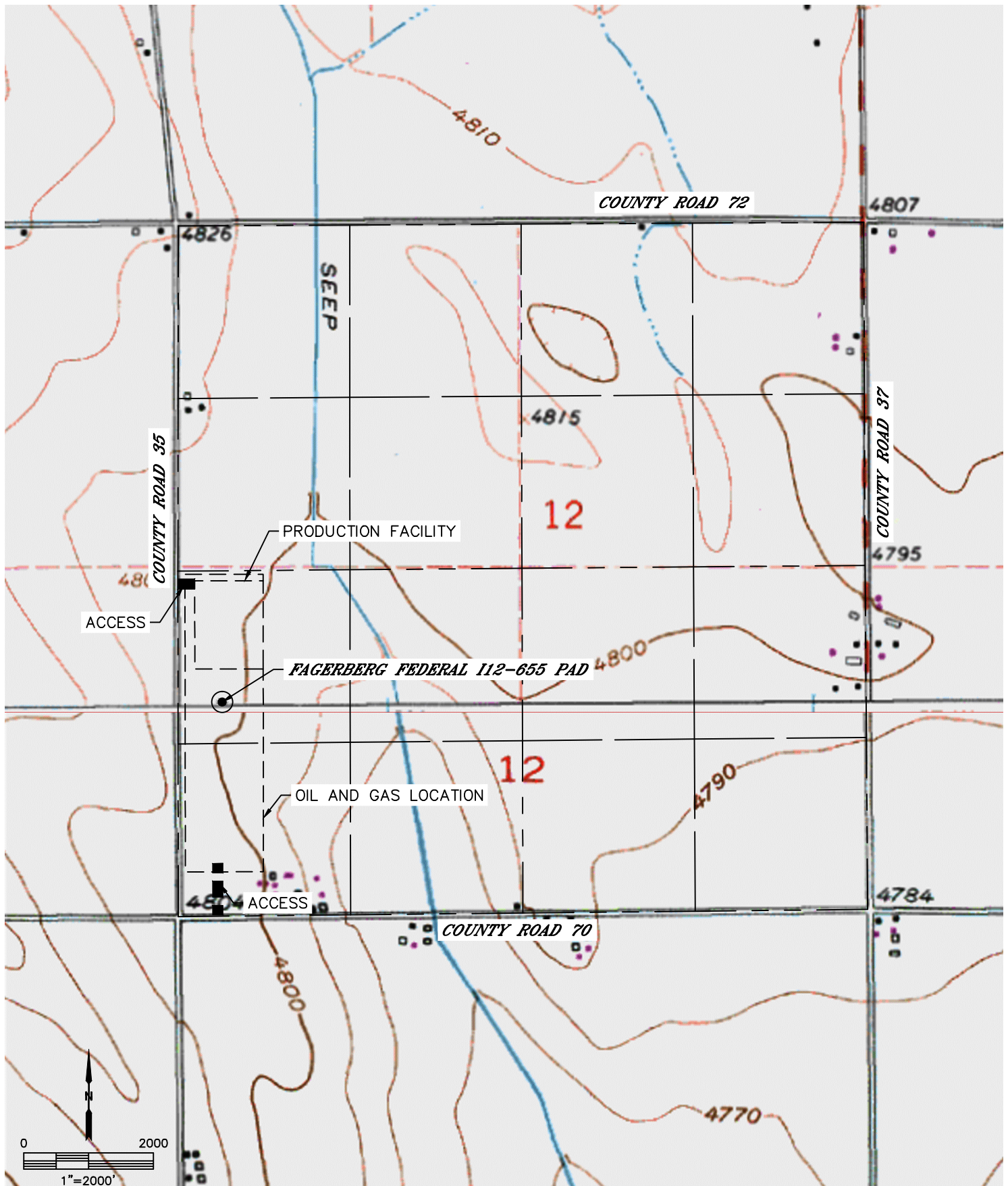


Lat40°, Inc. 6250 W. 10th Street, Unit 2, Greeley, CO 970-515-5294

ACCESS ROAD MAP

FAGERBERG FEDERAL I12-655 PAD

SECTION: 12
TOWNSHIP: 6N
RANGE: 66W
6TH. P.M.
WELD COUNTY, CO



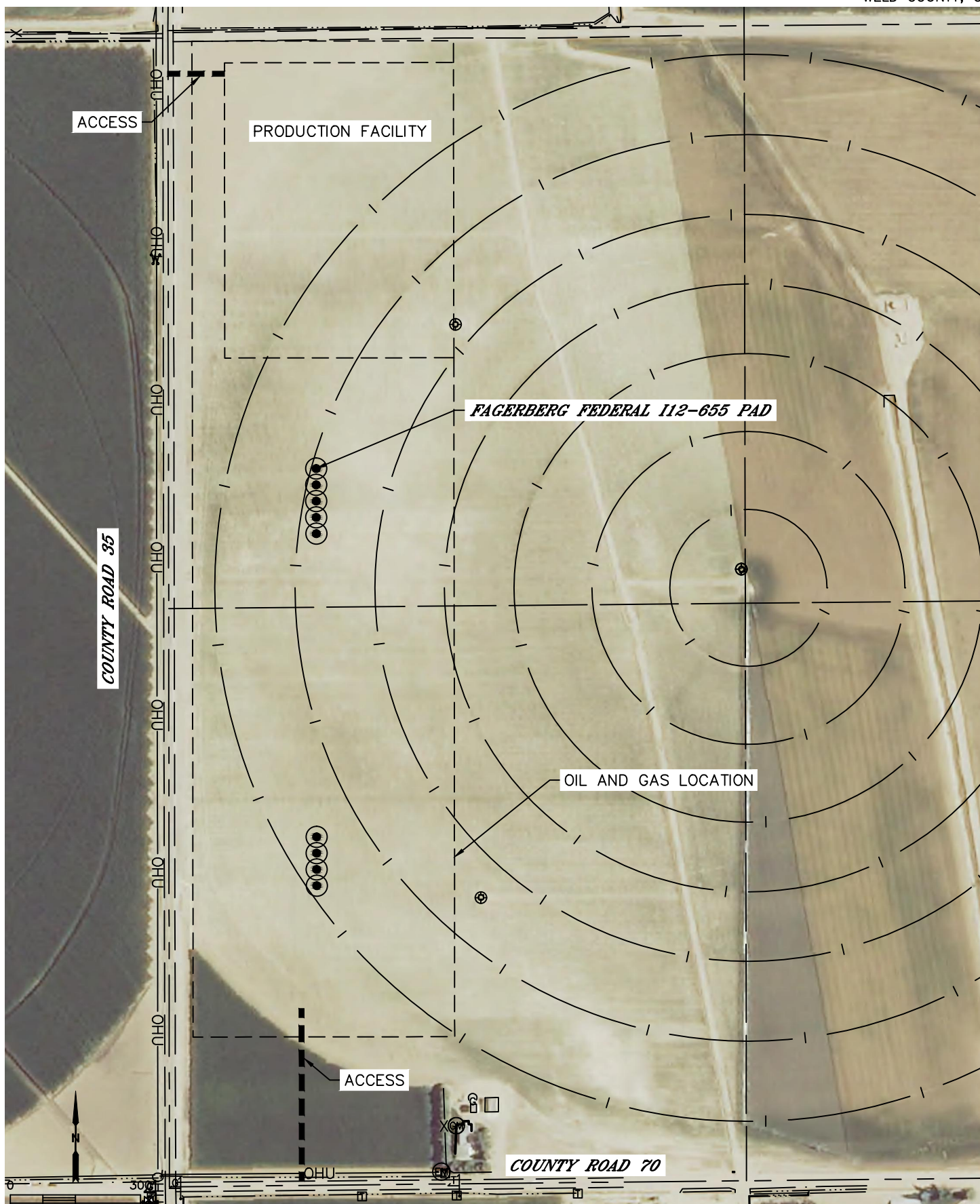


Lat40°, Inc. 6250 W. 10th Street, Unit 2, Greeley, CO 970-515-5294

ACCESS ROAD MAP

FAGERBERG FEDERAL 112-655 PAD

SECTION: 12
TOWNSHIP: 6N
RANGE: 66W
6TH. P.M.
WELD COUNTY, CO



1"=300'

SHEET 2 OF 2

DATE: 2/24/2015
PROJECT#: 2014145