



Kerr-McGee Oil & Gas Onshore LP

A subsidiary of Anadarko Petroleum Corporation

1099 18th Street
Denver, CO 80202
720-929-6000

May 29, 2015

Matt Lepore
Director, Colorado Oil and Gas Conservation Commission
Department of Natural Resources
The Chancery Building
1120 Lincoln Street, Suite 801
Denver, CO 80203

Re: **30 Day Certification Letter - 318A.e**
GE POWERS 28N-26HZ (Doc No. 400845521)
Township 2 North, Range 65 West
Section 23: NENW
Unit Acreage: 400 acres
Unit Spacing: 02N-65W-Sec 23 W2E2, E2W2
02N-65W-Sec 26 NENW, NWNE
Weld County, Colorado

Dear Director Lepore:

Kerr-McGee Oil and Gas Onshore LP ("KMG") hereby certifies that a thirty (30) day notice has been given by certified mail to all mineral owners in the proposed wellbore spacing unit. We have not received any objections to such well location, proposed spacing unit, or additional producing formation. KMG hereby respectfully requests approval of this boundary well.

If you have any questions or issues regarding this permit, please contact our office.

Sincerely,

Kerr-McGee Oil and Gas Onshore LP

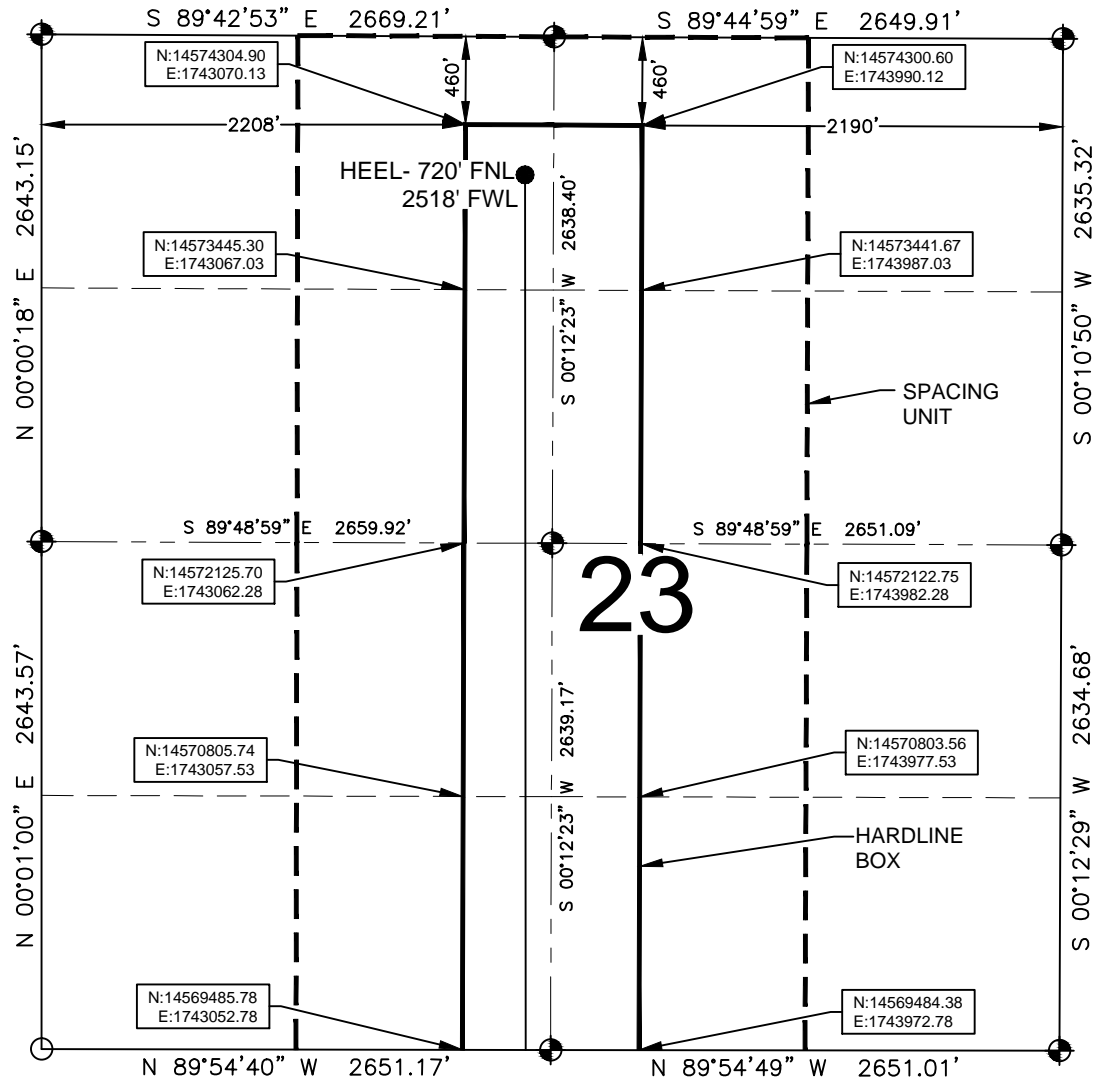
A handwritten signature in blue ink that reads 'R Powers'.

Ronett Powers
Regulatory Analyst II

Enclosure

HARDLINE EXHIBIT: GE POWERS 28N-26HZ

SECTION 23, TOWNSHIP 2 NORTH, RANGE 65 WEST, 6TH P.M.



LEGEND

- = EXISTING MONUMENT ● = BOTTOM HOLE
● = PROPOSED HEEL BH = BOTTOM HOLE
○ = CALCULATED POSITION

HEEL LOCATION

WGS84 UTM 13N
LATITUDE= 40.129335°
LONGITUDE= 104.631643°

LATITUDE= 40°07'45.605"
LONGITUDE= 104°37'53.916"

BOTTOM HOLE LOCATION

NAD83 STATE PLANE CO N
LATITUDE= 40.115723°
LONGITUDE= 104.631711°

LATITUDE= 40°06'56.603"
LONGITUDE= 104°37'54.159"

QRT/QRT SECTIONS WITHIN PATH OF THE HARDLINE

NENW, SEC. 23 NWNW, SEC. 23
SENE, SEC. 23 SWNE, SEC. 23
NESW, SEC. 23 NWSE, SEC. 23
SESW, SEC. 23 SWSE, SEC. 23

AVAILABLE FOOTAGE

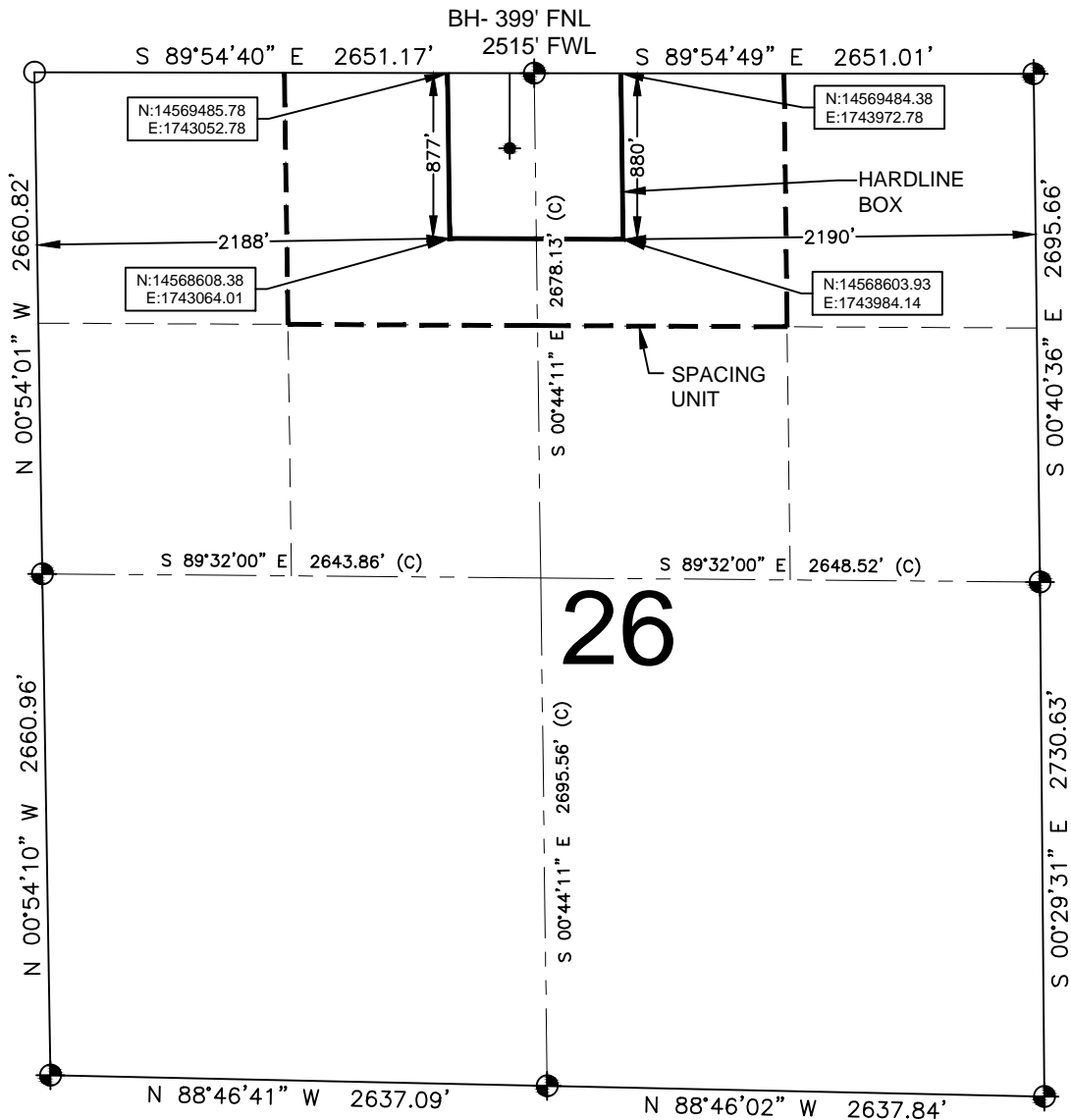
5697'

NOTES:

- THIS DOCUMENT IS NOT A LAND SURVEY PLAT OR IMPROVEMENT SURVEY PLAT. THIS DOCUMENT DOES NOT REFLECT A FIELD SURVEY. SECTION BREAKDOWN, MONUMENTATION AND HORIZONTAL POSITIONS SHOWN ARE BASED ON THE HEEL AND BOTTOM HOLE LOCATION PROVIDED BY ANADARKO PETROLEUM CORPORATION.
- COORDINATES ARE PROVIDED IN WGS84, UTM ZONE 13N.

HARDLINE EXHIBIT: GE POWERS 28N-26HZ

SECTION 26, TOWNSHIP 2 NORTH, RANGE 65 WEST, 6TH P.M.



LEGEND

- = EXISTING MONUMENT
- = PROPOSED HEEL
- = CALCULATED POSITION
- ✦ = BOTTOM HOLE
- BH = BOTTOM HOLE

QRT/QRT SECTIONS WITHIN PATH OF THE HARDLINE

NENW, SEC. 26
NWNE, SEC. 26

NOTES:

- THIS DOCUMENT IS NOT A LAND SURVEY PLAT OR IMPROVEMENT SURVEY PLAT. THIS DOCUMENT DOES NOT REFLECT A FIELD SURVEY. SECTION BREAKDOWN, MONUMENTATION AND HORIZONTAL POSITIONS SHOWN ARE BASED ON THE HEEL AND BOTTOM HOLE LOCATION PROVIDED BY ANADARKO PETROLEUM CORPORATION.
- COORDINATES ARE PROVIDED IN WGS84, UTM ZONE 13N.