

KERR-MCGEE OIL & GAS ONSHORE LP_1



Location: Compass Import Slot: SLOT#07 GE POWERS 28N-26HZ
Field: WELD COUNTY (UTM (ZONE 13)/NAD83/TRUE NORTH) Well: GE POWERS 28N-26HZ
Facility: 2N-65W-23 Offsets Wellbore: GE POWERS 28N-26HZ PWB

Plot reference wellpath is GE POWERS 28N-26HZ (PERMIT REV-2) PWP

True vertical depths are referenced to PERMIT (17KB) (RKB) Grid System: NAD83 / UTM Zone 13 North, US feet
Measured depths are referenced to PERMIT (17KB) (RKB) North Reference: True north
PERMIT (17KB) (RKB) to Mean Sea Level: 4907 feet Scale: Grid distance
Mean Sea Level to Mud line (At Slot: SLOT#07 GE POWERS 28N-26HZ): 0 feet Depths are in feet
Coordinates are in feet referenced to Slot Created by: precin on 2/4/2015

Location Information

Facility Name			Grid East (US ft)	Grid North (US ft)	Latitude	Longitude
2N-65W-23 Offsets			1743038.821	14574304.203	40°07'48.198"N	104°37'58.303"W
Slot	Local N (ft)	Local E (ft)	Grid East (US ft)	Grid North (US ft)	Latitude	Longitude
SLOT#07 GE POWERS 28N-26HZ	67.78	-736.54	1742302.008	14574368.945	40°07'48.868"N	104°38'07.789"W
PERMIT (17KB) (RKB) to Mud line (At Slot: SLOT#07 GE POWERS 28N-26HZ)					4907ft	
Mean Sea Level to Mud line (At Slot: SLOT#07 GE POWERS 28N-26HZ)					0ft	
PERMIT (17KB) (RKB) to Mean Sea Level					4907ft	

Survey Program

Start MD (ft)	End MD (ft)	Tool	Model	Log Name/Comment	Wellbore
17.00	12538.43	ISOWSA MWD, Rev. 2, axial magnetic correction	ISOWSA MWD, Rev. 2, axial magnetic correction (Standard) (MagVAR IFR Wattenberg)		GE POWERS 28N-26HZ PWB

Well Profile Data

Design Comment	MD (ft)	Inc (°)	Az (°)	TVD (ft)	Local N (ft)	Local E (ft)	DLS (°/100ft)	VS (ft)
TIE-ON	17.00	0.000	77.500	17.00	0.00	0.00	0.00	0.00
BEGIN NUDGE	1500.00	0.000	77.500	1500.00	0.00	0.00	0.00	0.00
END NUDGE	2400.00	18.000	77.500	2385.27	30.35	136.89	2.00	-30.87
BEGIN DROP	5070.43	18.000	77.500	4925.00	208.96	942.54	0.00	-212.52
END DROP	5970.43	0.000	180.217	5810.27	239.30	1079.43	2.00	-243.39
KOP, BUILD @ 10°/100'	6685.21	0.000	180.217	6525.05	239.30	1079.43	0.00	-243.39
LANDING POINT	7583.25	89.803	180.217	7098.00	-331.69	1077.26	10.00	327.60
TOTAL DEPTH	12538.43	89.803	180.217	7115.00	-5286.80	1058.49	0.00	5282.76

Targets

Name	MD (ft)	TVD (ft)	Local N (ft)	Local E (ft)	Grid East (US ft)	Grid North (US ft)	Latitude	Longitude
GE POWERS 28N-26HZ_SHL		4907.00	0.00	0.00	1742302.01	14574368.94	40°07'48.868"N	104°38'07.789"W
SEC.23-T2N-R65W		4907.00	1.42	-180.06	1742121.95	14574369.62	40°07'48.882"N	104°38'10.108"W
SEC.26-T2N-R65W		4907.00	1.42	-180.06	1742121.95	14574369.62	40°07'48.882"N	104°38'10.108"W
GE POWERS 28N-26HZ_BHL	12538.43	7115.00	-5286.80	1058.49	1743382.16	14569086.54	40°06'56.603"N	104°37'54.159"W

True Vertical Depth (ft)
Scale 1 inch = 1000 ft

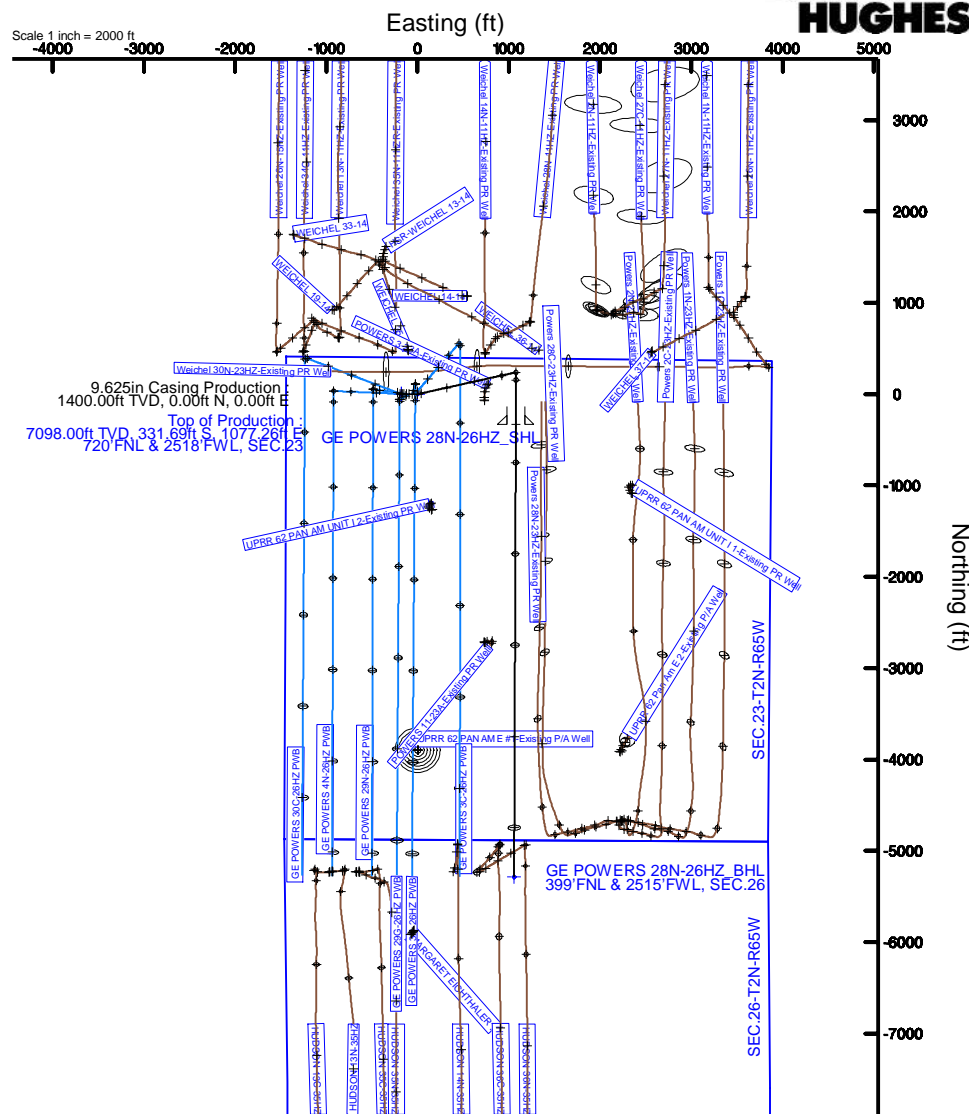
Sharon Springs : 0.00° Inc, 6549.16ft MD, 6389.00ft TVD, -243.39ft VS
KOP, BUILD @ 10°/100' : 0.00° Inc, 6685.21ft MD, 6525.05ft TVD, -243.39ft VS
Niobrara Top : 35.41° Inc, 7039.27ft MD, 6857.00ft TVD, -137.43ft VS
Niobrara B Bench : 42.75° Inc, 7112.75ft MD, 6914.00ft TVD, -91.14ft VS
Niobrara C Bench : 54.41° Inc, 7229.35ft MD, 6991.00ft TVD, -3.85ft VS

Top of Production : 89.80° Inc, 7583.25ft MD, 7098.00ft TVD, 327.60ft VS
7in Casing Intermediate : 89.80° Inc, 7583.25ft MD, 7098.00ft TVD, 327.61ft VS

TOTAL DEPTH : 89.80° Inc, 12538.43ft MD, 7115.00ft TVD, 5282.76ft VS
GE POWERS 28N-26HZ_BHL
399'FNL & 2515'FWL, SEC.26

Vertical Section (ft)

Azimuth 180.22° with reference 0.00 N, 0.00 E



Scale 1 inch = 1000 ft

REFERENCE WELLPATH IDENTIFICATION			
Operator	KERR-MCGEE OIL & GAS ONSHORE LP_1	Slot	SLOT#07 GE POWERS 28N-26HZ
Area	Compass Import	Well	GE POWERS 28N-26HZ
Field	WELD COUNTY (UTM (ZONE 13)/NAD83/TRUE NORTH)	Wellbore	GE POWERS 28N-26HZ PWB
Facility	2N-65W-23 Offsets		

REPORT SETUP INFORMATION			
Projection System	NAD83 / UTM Zone 13 North, US feet	Software System	WellArchitect® 4.1.1
North Reference	True	User	Precain
Scale	0.999612	Report Generated	4/24/2015 at 12:53:12 PM
Convergence at slot	0.23° East	Database/Source file	WellArchitectDC/GE_POWER_28N-26HZ_PWB.xml

WELLPATH LOCATION						
	Local coordinates		Grid coordinates		Geographic coordinates	
	North[ft]	East[ft]	Easting[US ft]	Northing[US ft]	Latitude	Longitude
Slot Location	67.78	-736.54	1742302.01	14574368.95	40°07'48.868"N	104°38'07.789"W
Facility Reference Pt			1743038.82	14574304.20	40°07'48.198"N	104°37'58.303"W
Field Reference Pt			1700626.56	14568707.73	40°06'54.245"N	104°47'04.711"W

WELLPATH DATUM			
Calculation method	Minimum curvature	PERMIT (17'KB) (RKB) to 2N-65W-23 Offsets vertical datum	4907.00ft
Horizontal Reference Pt	Slot	PERMIT (17'KB) (RKB) to Mean Sea Level	4907.00ft
Vertical Reference Pt	PERMIT (17'KB) (RKB)	PERMIT (17'KB) (RKB) to Mud Line at Slot (SLOT#07 GE POWERS 28N-26HZ)	4907.00ft
MD Reference Pt	PERMIT (17'KB) (RKB)	Section Origin	N 0.00, E 0.00 ft
Field Vertical Reference	Mean Sea Level	Section Azimuth	180.22°

REFERENCE WELLPATH IDENTIFICATION			
Operator	KERR-MCGEE OIL & GAS ONSHORE LP_1	Slot	SLOT#07 GE POWERS 28N-26HZ
Area	Compass Import	Well	GE POWERS 28N-26HZ
Field	WELD COUNTY (UTM (ZONE 13)/NAD83/TRUE NORTH)	Wellbore	GE POWERS 28N-26HZ PWB
Facility	2N-65W-23 Offsets		

WELLPATH DATA (140 stations) † = interpolated/extrapolated station										
MD [ft]	Inclination [°]	Azimuth [°]	TVD [ft]	Vert Sect [ft]	North [ft]	East [ft]	Latitude	Longitude	DLS [°/100ft]	Comments
0.00†	0.000	77.500	0.00	0.00	0.00	0.00	40°07'48.868"N	104°38'07.789"W	0.00	
17.00	0.000	77.500	17.00	0.00	0.00	0.00	40°07'48.868"N	104°38'07.789"W	0.00	TIE-ON
117.00†	0.000	77.500	117.00	0.00	0.00	0.00	40°07'48.868"N	104°38'07.789"W	0.00	
217.00†	0.000	77.500	217.00	0.00	0.00	0.00	40°07'48.868"N	104°38'07.789"W	0.00	
317.00†	0.000	77.500	317.00	0.00	0.00	0.00	40°07'48.868"N	104°38'07.789"W	0.00	
417.00†	0.000	77.500	417.00	0.00	0.00	0.00	40°07'48.868"N	104°38'07.789"W	0.00	
517.00†	0.000	77.500	517.00	0.00	0.00	0.00	40°07'48.868"N	104°38'07.789"W	0.00	
617.00†	0.000	77.500	617.00	0.00	0.00	0.00	40°07'48.868"N	104°38'07.789"W	0.00	
717.00†	0.000	77.500	717.00	0.00	0.00	0.00	40°07'48.868"N	104°38'07.789"W	0.00	
817.00†	0.000	77.500	817.00	0.00	0.00	0.00	40°07'48.868"N	104°38'07.789"W	0.00	
917.00†	0.000	77.500	917.00	0.00	0.00	0.00	40°07'48.868"N	104°38'07.789"W	0.00	
1017.00†	0.000	77.500	1017.00	0.00	0.00	0.00	40°07'48.868"N	104°38'07.789"W	0.00	
1117.00†	0.000	77.500	1117.00	0.00	0.00	0.00	40°07'48.868"N	104°38'07.789"W	0.00	
1217.00†	0.000	77.500	1217.00	0.00	0.00	0.00	40°07'48.868"N	104°38'07.789"W	0.00	
1317.00†	0.000	77.500	1317.00	0.00	0.00	0.00	40°07'48.868"N	104°38'07.789"W	0.00	
1417.00†	0.000	77.500	1417.00	0.00	0.00	0.00	40°07'48.868"N	104°38'07.789"W	0.00	
1500.00	0.000	77.500	1500.00	0.00	0.00	0.00	40°07'48.868"N	104°38'07.789"W	0.00	BEGIN NUDGE
1517.00†	0.340	77.500	1517.00	-0.01	0.01	0.05	40°07'48.868"N	104°38'07.788"W	2.00	
1617.00†	2.340	77.500	1616.97	-0.53	0.52	2.33	40°07'48.873"N	104°38'07.759"W	2.00	
1717.00†	4.340	77.500	1716.79	-1.81	1.78	8.02	40°07'48.886"N	104°38'07.686"W	2.00	
1817.00†	6.340	77.500	1816.35	-3.86	3.79	17.11	40°07'48.905"N	104°38'07.569"W	2.00	
1917.00†	8.340	77.500	1915.53	-6.67	6.56	29.58	40°07'48.933"N	104°38'07.408"W	2.00	
2017.00†	10.340	77.500	2014.20	-10.24	10.07	45.42	40°07'48.968"N	104°38'07.204"W	2.00	
2117.00†	12.340	77.500	2112.24	-14.57	14.33	64.62	40°07'49.010"N	104°38'06.957"W	2.00	
2217.00†	14.340	77.500	2209.54	-19.65	19.32	87.14	40°07'49.059"N	104°38'06.667"W	2.00	
2317.00†	16.340	77.500	2305.97	-25.47	25.04	112.97	40°07'49.116"N	104°38'06.334"W	2.00	
2400.00	18.000	77.500	2385.27	-30.87	30.35	136.89	40°07'49.168"N	104°38'06.026"W	2.00	END NUDGE
2417.00†	18.000	77.500	2401.44	-32.02	31.48	142.02	40°07'49.179"N	104°38'05.960"W	0.00	
2517.00†	18.000	77.500	2496.54	-38.82	38.17	172.19	40°07'49.245"N	104°38'05.571"W	0.00	
2617.00†	18.000	77.500	2591.65	-45.63	44.86	202.36	40°07'49.311"N	104°38'05.183"W	0.00	
2717.00†	18.000	77.500	2686.75	-52.43	51.55	232.53	40°07'49.378"N	104°38'04.794"W	0.00	
2817.00†	18.000	77.500	2781.86	-59.23	58.24	262.69	40°07'49.444"N	104°38'04.406"W	0.00	
2917.00†	18.000	77.500	2876.96	-66.04	64.93	292.86	40°07'49.510"N	104°38'04.017"W	0.00	
3017.00†	18.000	77.500	2972.07	-72.84	71.61	323.03	40°07'49.576"N	104°38'03.629"W	0.00	
3117.00†	18.000	77.500	3067.18	-79.64	78.30	353.20	40°07'49.642"N	104°38'03.240"W	0.00	
3217.00†	18.000	77.500	3162.28	-86.44	84.99	383.37	40°07'49.708"N	104°38'02.851"W	0.00	
3317.00†	18.000	77.500	3257.39	-93.25	91.68	413.54	40°07'49.774"N	104°38'02.463"W	0.00	
3417.00†	18.000	77.500	3352.49	-100.05	98.37	443.71	40°07'49.840"N	104°38'02.074"W	0.00	
3517.00†	18.000	77.500	3447.60	-106.85	105.06	473.88	40°07'49.907"N	104°38'01.686"W	0.00	
3617.00†	18.000	77.500	3542.70	-113.65	111.74	504.05	40°07'49.973"N	104°38'01.297"W	0.00	
3717.00†	18.000	77.500	3637.81	-120.46	118.43	534.22	40°07'50.039"N	104°38'00.909"W	0.00	
3817.00†	18.000	77.500	3732.92	-127.26	125.12	564.39	40°07'50.105"N	104°38'00.520"W	0.00	
3917.00†	18.000	77.500	3828.02	-134.06	131.81	594.56	40°07'50.171"N	104°38'00.132"W	0.00	
4017.00†	18.000	77.500	3923.13	-140.86	138.50	624.73	40°07'50.237"N	104°37'59.743"W	0.00	
4117.00†	18.000	77.500	4018.23	-147.67	145.19	654.89	40°07'50.303"N	104°37'59.354"W	0.00	

REFERENCE WELLPATH IDENTIFICATION			
Operator	KERR-MCGEE OIL & GAS ONSHORE LP_1	Slot	SLOT#07 GE POWERS 28N-26HZ
Area	Compass Import	Well	GE POWERS 28N-26HZ
Field	WELD COUNTY (UTM (ZONE 13)/NAD83/TRUE NORTH)	Wellbore	GE POWERS 28N-26HZ PWB
Facility	2N-65W-23 Offsets		

WELLPATH DATA (140 stations) † = interpolated/extrapolated station										
MD [ft]	Inclination [°]	Azimuth [°]	TVD [ft]	Vert Sect [ft]	North [ft]	East [ft]	Latitude	Longitude	DLS [°/100ft]	Comments
4217.00†	18.000	77.500	4113.34	-154.47	151.87	685.06	40°07'50.369"N	104°37'58.966"W	0.00	
4317.00†	18.000	77.500	4208.44	-161.27	158.56	715.23	40°07'50.435"N	104°37'58.577"W	0.00	
4417.00†	18.000	77.500	4303.55	-168.07	165.25	745.40	40°07'50.502"N	104°37'58.189"W	0.00	
4517.00†	18.000	77.500	4398.66	-174.88	171.94	775.57	40°07'50.568"N	104°37'57.800"W	0.00	
4614.10†	18.000	77.500	4491.00	-181.48	178.43	804.86	40°07'50.632"N	104°37'57.423"W	0.00	Sussex
4617.00†	18.000	77.500	4493.76	-181.68	178.63	805.74	40°07'50.634"N	104°37'57.412"W	0.00	
4717.00†	18.000	77.500	4588.87	-188.48	185.32	835.91	40°07'50.700"N	104°37'57.023"W	0.00	
4817.00†	18.000	77.500	4683.97	-195.28	192.01	866.08	40°07'50.766"N	104°37'56.635"W	0.00	
4917.00†	18.000	77.500	4779.08	-202.09	198.69	896.25	40°07'50.832"N	104°37'56.246"W	0.00	
5017.00†	18.000	77.500	4874.18	-208.89	205.38	926.42	40°07'50.898"N	104°37'55.857"W	0.00	
5070.43	18.000	77.500	4925.00	-212.52	208.96	942.54	40°07'50.934"N	104°37'55.650"W	0.00	BEGIN DROP
5117.00†	17.069	77.500	4969.40	-215.61	211.99	956.23	40°07'50.964"N	104°37'55.473"W	2.00	
5217.00†	15.069	77.500	5065.49	-221.70	217.98	983.26	40°07'51.023"N	104°37'55.125"W	2.00	
5317.00†	13.069	77.500	5162.49	-227.06	223.24	1006.99	40°07'51.075"N	104°37'54.820"W	2.00	
5417.00†	11.069	77.500	5260.27	-231.66	227.77	1027.40	40°07'51.119"N	104°37'54.557"W	2.00	
5517.00†	9.069	77.500	5358.73	-235.51	231.55	1044.47	40°07'51.157"N	104°37'54.337"W	2.00	
5617.00†	7.069	77.500	5457.73	-238.60	234.59	1058.17	40°07'51.187"N	104°37'54.161"W	2.00	
5717.00†	5.069	77.500	5557.17	-240.92	236.88	1068.49	40°07'51.210"N	104°37'54.028"W	2.00	
5817.00†	3.069	77.500	5656.91	-242.49	238.41	1075.42	40°07'51.225"N	104°37'53.938"W	2.00	
5917.00†	1.069	77.500	5756.84	-243.28	239.20	1078.94	40°07'51.232"N	104°37'53.893"W	2.00	
5970.43	0.000	180.217	5810.27	-243.39	239.30	1079.43	40°07'51.234"N	104°37'53.887"W	2.00	END DROP
6017.00†	0.000	180.217	5856.84	-243.39	239.30	1079.43	40°07'51.234"N	104°37'53.887"W	0.00	
6117.00†	0.000	180.217	5956.84	-243.39	239.30	1079.43	40°07'51.234"N	104°37'53.887"W	0.00	
6217.00†	0.000	180.217	6056.84	-243.39	239.30	1079.43	40°07'51.234"N	104°37'53.887"W	0.00	
6317.00†	0.000	180.217	6156.84	-243.39	239.30	1079.43	40°07'51.234"N	104°37'53.887"W	0.00	
6417.00†	0.000	180.217	6256.84	-243.39	239.30	1079.43	40°07'51.234"N	104°37'53.887"W	0.00	
6517.00†	0.000	180.217	6356.84	-243.39	239.30	1079.43	40°07'51.234"N	104°37'53.887"W	0.00	
6549.16†	0.000	180.217	6389.00	-243.39	239.30	1079.43	40°07'51.234"N	104°37'53.887"W	0.00	Sharon Springs
6617.00†	0.000	180.217	6456.84	-243.39	239.30	1079.43	40°07'51.234"N	104°37'53.887"W	0.00	
6685.21	0.000	180.217	6525.05	-243.39	239.30	1079.43	40°07'51.234"N	104°37'53.887"W	0.00	KOP, BUILD @ 10°/100'
6717.00†	3.179	180.217	6556.82	-242.51	238.42	1079.42	40°07'51.225"N	104°37'53.887"W	10.00	
6817.00†	13.179	180.217	6655.68	-228.30	224.21	1079.37	40°07'51.084"N	104°37'53.888"W	10.00	
6917.00†	23.179	180.217	6750.57	-197.14	193.05	1079.25	40°07'50.776"N	104°37'53.889"W	10.00	
7017.00†	33.179	180.217	6838.60	-149.98	145.89	1079.07	40°07'50.310"N	104°37'53.891"W	10.00	
7039.27†	35.406	180.217	6857.00	-137.43	133.35	1079.02	40°07'50.186"N	104°37'53.892"W	10.00	Niobrara Top
7112.75†	42.754	180.217	6914.00	-91.14	87.06	1078.85	40°07'49.728"N	104°37'53.894"W	10.00	Niobrara B Bench
7117.00†	43.179	180.217	6917.11	-88.24	84.16	1078.84	40°07'49.700"N	104°37'53.894"W	10.00	
7217.00†	53.179	180.217	6983.71	-13.82	9.73	1078.56	40°07'48.964"N	104°37'53.898"W	10.00	
7229.35†	54.414	180.217	6991.00	-3.85	-0.23	1078.52	40°07'48.865"N	104°37'53.899"W	10.00	Niobrara C Bench
7317.00†	63.179	180.217	7036.37	71.05	-75.13	1078.24	40°07'48.125"N	104°37'53.902"W	10.00	
7417.00†	73.179	180.217	7073.49	163.76	-167.85	1077.88	40°07'47.208"N	104°37'53.907"W	10.00	
7517.00†	83.179	180.217	7093.95	261.52	-265.60	1077.51	40°07'46.242"N	104°37'53.912"W	10.00	
7583.25	89.803	180.217	7098.00	327.60	-331.69	1077.26	40°07'45.589"N	104°37'53.915"W	10.00	LANDING POINT
7583.25†	89.803	180.217	7098.00	327.61	-331.69	1077.26	40°07'45.589"N	104°37'53.915"W	0.00	Top of Casing
7617.00†	89.803	180.217	7098.12	361.36	-365.44	1077.14	40°07'45.255"N	104°37'53.917"W	0.00	

REFERENCE WELLPATH IDENTIFICATION			
Operator	KERR-MCGEE OIL & GAS ONSHORE LP_1	Slot	SLOT#07 GE POWERS 28N-26HZ
Area	Compass Import	Well	GE POWERS 28N-26HZ
Field	WELD COUNTY (UTM (ZONE 13)/NAD83/TRUE NORTH)	Wellbore	GE POWERS 28N-26HZ PWB
Facility	2N-65W-23 Offsets		

WELLPATH DATA (140 stations) † = interpolated/extrapolated station										
MD [ft]	Inclination [°]	Azimuth [°]	TVD [ft]	Vert Sect [ft]	North [ft]	East [ft]	Latitude	Longitude	DLS [°/100ft]	Comments
7717.00†	89.803	180.217	7098.46	461.36	-465.44	1076.76	40°07'44.266"N	104°37'53.922"W	0.00	
7817.00†	89.803	180.217	7098.80	561.36	-565.44	1076.38	40°07'43.278"N	104°37'53.927"W	0.00	
7917.00†	89.803	180.217	7099.15	661.35	-665.43	1076.00	40°07'42.289"N	104°37'53.931"W	0.00	
8017.00†	89.803	180.217	7099.49	761.35	-765.43	1075.62	40°07'41.301"N	104°37'53.936"W	0.00	
8117.00†	89.803	180.217	7099.83	861.35	-865.43	1075.24	40°07'40.312"N	104°37'53.941"W	0.00	
8217.00†	89.803	180.217	7100.18	961.35	-965.43	1074.86	40°07'39.324"N	104°37'53.946"W	0.00	
8317.00†	89.803	180.217	7100.52	1061.35	-1065.43	1074.48	40°07'38.335"N	104°37'53.951"W	0.00	
8417.00†	89.803	180.217	7100.86	1161.35	-1165.43	1074.10	40°07'37.346"N	104°37'53.956"W	0.00	
8517.00†	89.803	180.217	7101.21	1261.35	-1265.43	1073.73	40°07'36.358"N	104°37'53.961"W	0.00	
8617.00†	89.803	180.217	7101.55	1361.35	-1365.43	1073.35	40°07'35.369"N	104°37'53.966"W	0.00	
8717.00†	89.803	180.217	7101.89	1461.35	-1465.42	1072.97	40°07'34.381"N	104°37'53.971"W	0.00	
8817.00†	89.803	180.217	7102.23	1561.35	-1565.42	1072.59	40°07'33.392"N	104°37'53.976"W	0.00	
8917.00†	89.803	180.217	7102.58	1661.35	-1665.42	1072.21	40°07'32.404"N	104°37'53.981"W	0.00	
9017.00†	89.803	180.217	7102.92	1761.35	-1765.42	1071.83	40°07'31.415"N	104°37'53.986"W	0.00	
9117.00†	89.803	180.217	7103.26	1861.35	-1865.42	1071.45	40°07'30.426"N	104°37'53.991"W	0.00	
9217.00†	89.803	180.217	7103.61	1961.35	-1965.42	1071.07	40°07'29.438"N	104°37'53.996"W	0.00	
9317.00†	89.803	180.217	7103.95	2061.35	-2065.42	1070.69	40°07'28.449"N	104°37'54.001"W	0.00	
9417.00†	89.803	180.217	7104.29	2161.35	-2165.41	1070.32	40°07'27.461"N	104°37'54.005"W	0.00	
9517.00†	89.803	180.217	7104.64	2261.35	-2265.41	1069.94	40°07'26.472"N	104°37'54.010"W	0.00	
9617.00†	89.803	180.217	7104.98	2361.34	-2365.41	1069.56	40°07'25.483"N	104°37'54.015"W	0.00	
9717.00†	89.803	180.217	7105.32	2461.34	-2465.41	1069.18	40°07'24.495"N	104°37'54.020"W	0.00	
9817.00†	89.803	180.217	7105.67	2561.34	-2565.41	1068.80	40°07'23.506"N	104°37'54.025"W	0.00	
9917.00†	89.803	180.217	7106.01	2661.34	-2665.41	1068.42	40°07'22.518"N	104°37'54.030"W	0.00	
10017.00†	89.803	180.217	7106.35	2761.34	-2765.41	1068.04	40°07'21.529"N	104°37'54.035"W	0.00	
10117.00†	89.803	180.217	7106.69	2861.34	-2865.41	1067.66	40°07'20.541"N	104°37'54.040"W	0.00	
10217.00†	89.803	180.217	7107.04	2961.34	-2965.40	1067.28	40°07'19.552"N	104°37'54.045"W	0.00	
10317.00†	89.803	180.217	7107.38	3061.34	-3065.40	1066.91	40°07'18.563"N	104°37'54.050"W	0.00	
10417.00†	89.803	180.217	7107.72	3161.34	-3165.40	1066.53	40°07'17.575"N	104°37'54.055"W	0.00	
10517.00†	89.803	180.217	7108.07	3261.34	-3265.40	1066.15	40°07'16.586"N	104°37'54.060"W	0.00	
10617.00†	89.803	180.217	7108.41	3361.34	-3365.40	1065.77	40°07'15.598"N	104°37'54.065"W	0.00	
10717.00†	89.803	180.217	7108.75	3461.34	-3465.40	1065.39	40°07'14.609"N	104°37'54.070"W	0.00	
10817.00†	89.803	180.217	7109.10	3561.34	-3565.40	1065.01	40°07'13.620"N	104°37'54.075"W	0.00	
10917.00†	89.803	180.217	7109.44	3661.34	-3665.40	1064.63	40°07'12.632"N	104°37'54.079"W	0.00	
11017.00†	89.803	180.217	7109.78	3761.34	-3765.39	1064.25	40°07'11.643"N	104°37'54.084"W	0.00	
11117.00†	89.803	180.217	7110.12	3861.34	-3865.39	1063.88	40°07'10.655"N	104°37'54.089"W	0.00	
11217.00†	89.803	180.217	7110.47	3961.34	-3965.39	1063.50	40°07'09.666"N	104°37'54.094"W	0.00	
11317.00†	89.803	180.217	7110.81	4061.33	-4065.39	1063.12	40°07'08.678"N	104°37'54.099"W	0.00	
11417.00†	89.803	180.217	7111.15	4161.33	-4165.39	1062.74	40°07'07.689"N	104°37'54.104"W	0.00	
11517.00†	89.803	180.217	7111.50	4261.33	-4265.39	1062.36	40°07'06.700"N	104°37'54.109"W	0.00	
11617.00†	89.803	180.217	7111.84	4361.33	-4365.39	1061.98	40°07'05.712"N	104°37'54.114"W	0.00	
11717.00†	89.803	180.217	7112.18	4461.33	-4465.38	1061.60	40°07'04.723"N	104°37'54.119"W	0.00	
11817.00†	89.803	180.217	7112.53	4561.33	-4565.38	1061.22	40°07'03.735"N	104°37'54.124"W	0.00	
11917.00†	89.803	180.217	7112.87	4661.33	-4665.38	1060.84	40°07'02.746"N	104°37'54.129"W	0.00	
12017.00†	89.803	180.217	7113.21	4761.33	-4765.38	1060.47	40°07'01.757"N	104°37'54.134"W	0.00	
12117.00†	89.803	180.217	7113.55	4861.33	-4865.38	1060.09	40°07'00.769"N	104°37'54.139"W	0.00	

REFERENCE WELLPATH IDENTIFICATION			
Operator	KERR-MCGEE OIL & GAS ONSHORE LP_1	Slot	SLOT#07 GE POWERS 28N-26HZ
Area	Compass Import	Well	GE POWERS 28N-26HZ
Field	WELD COUNTY (UTM (ZONE 13)/NAD83/TRUE NORTH)	Wellbore	GE POWERS 28N-26HZ PWB
Facility	2N-65W-23 Offsets		

WELLPATH DATA (140 stations) † = interpolated/extrapolated station										
MD [ft]	Inclination [°]	Azimuth [°]	TVD [ft]	Vert Sect [ft]	North [ft]	East [ft]	Latitude	Longitude	DLS [°/100ft]	Comments
12217.00†	89.803	180.217	7113.90	4961.33	-4965.38	1059.71	40°06'59.780"N	104°37'54.144"W	0.00	
12317.00†	89.803	180.217	7114.24	5061.33	-5065.38	1059.33	40°06'58.792"N	104°37'54.149"W	0.00	
12417.00†	89.803	180.217	7114.58	5161.33	-5165.38	1058.95	40°06'57.803"N	104°37'54.153"W	0.00	
12517.00†	89.803	180.217	7114.93	5261.33	-5265.37	1058.57	40°06'56.815"N	104°37'54.158"W	0.00	
12538.43	89.803	180.217	7115.00†	5282.76	-5286.80	1058.49	40°06'56.603"N	104°37'54.159"W	0.00	TOTAL DEPTH

HOLE & CASING SECTIONS									
- Ref Wellbore: GE POWERS 28N-26HZ PWB					Ref Wellpath: GE POWERS 28N-26HZ (PERMIT REV-2) PWP				
String/Diameter	Start MD [ft]	End MD [ft]	Interval [ft]	Start TVD [ft]	End TVD [ft]	Start N/S [ft]	Start E/W [ft]	End N/S [ft]	End E/W [ft]
13.5in Open Hole	17.00	1400.00	1383.00	17.00	1400.00	0.00	0.00	0.00	0.00
9.625in Casing Production	17.00	1400.00	1383.00	17.00	1400.00	0.00	0.00	0.00	0.00
7.875in Open Hole	1400.00	12538.43	11138.43	1400.00	7115.00	0.00	0.00	-5286.80	1058.49
5.5in Casing Production	17.00	12538.43	12521.43	17.00	7115.00	0.00	0.00	-5286.80	1058.49

TARGETS									
Name	MD [ft]	TVD [ft]	North [ft]	East [ft]	Grid East [US ft]	Grid North [US ft]	Latitude	Longitude	Shape
GE POWERS 28N-26HZ_SHL		4907.00	0.00	0.00	1742302.01	14574368.94	40°07'48.868"N	104°38'07.789"W	point
SEC.23-T2N-R65W		4907.00	1.42	-180.06	1742121.95	14574369.62	40°07'48.882"N	104°38'10.108"W	polygon
SEC.26-T2N-R65W		4907.00	1.42	-180.06	1742121.95	14574369.62	40°07'48.882"N	104°38'10.108"W	polygon
1) GE POWERS 28N-26HZ_BHL	12538.43	7115.00	-5286.80	1058.49	1743382.16	14569086.54	40°06'56.603"N	104°37'54.159"W	point

SURVEY PROGRAM -				
Ref Wellbore: GE POWERS 28N-26HZ PWB		Ref Wellpath: GE POWERS 28N-26HZ (PERMIT REV-2) PWP		
Start MD [ft]	End MD [ft]	Positional Uncertainty Model	Log Name/Comment	Wellbore
17.00	12538.43	ISCWSA MWD, Rev. 2, axial magnetic correction (Standard) (MagVAR IFR Wattenberg)		GE POWERS 28N-26HZ PWB

REFERENCE WELLPATH IDENTIFICATION			
Operator	KERR-MCGEE OIL & GAS ONSHORE LP_1	Slot	SLOT#07 GE POWERS 28N-26HZ
Area	Compass Import	Well	GE POWERS 28N-26HZ
Field	WELD COUNTY (UTM (ZONE 13)/NAD83/TRUE NORTH)	Wellbore	GE POWERS 28N-26HZ PWB
Facility	2N-65W-23 Offsets		

WELLPATH COMMENTS					
MD [ft]	Inclination [°]	Azimuth [°]	TVD [ft]	Comment	
4614.10	18.000	77.500	4491.00	Sussex	
6549.16	0.000	180.217	6389.00	Sharon Springs	
7039.27	35.406	180.217	6857.00	Niobrara Top	
7112.75	42.754	180.217	6914.00	Niobrara B Bench	
7229.35	54.414	180.217	6991.00	Niobrara C Bench	
7583.25	89.803	180.217	7098.00	Top of Casing	

DESIGN COMMENTS					
MD [ft]	Inclination [°]	Azimuth [°]	TVD [ft]	Comment	
17.00	0.000	77.500	17.00	TIE-ON	
1500.00	0.000	77.500	1500.00	BEGIN NUDGE	
2400.00	18.000	77.500	2385.27	END NUDGE	
5070.43	18.000	77.500	4925.00	BEGIN DROP	
5970.43	0.000	180.217	5810.27	END DROP	
6685.21	0.000	180.217	6525.05	KOP, BUILD @ 10°/100'	
7583.25	89.803	180.217	7098.00	LANDING POINT	
12538.43	89.803	180.217	7115.00	TOTAL DEPTH	