

KERR-MCGEE OIL & GAS ONSHORE LP_1



Location: Compass Import Slot: SLOT#04 GE POWERS 29G-26HZ
Field: WELD COUNTY (UTM (ZONE 13)/NAD83/TRUE NORTH) Well: GE POWERS 29G-26HZ
Facility: 2N-65W-23 Offsets Wellbore: GE POWERS 29G-26HZ PWB

Plot reference wellpath is GE POWERS 29G-26HZ (PERMIT REV-1) PWP

True vertical depths are referenced to PERMIT (17'KB) (RKB)	Grid System: NAD83 / UTM Zone 13 North, US feet
Measured depths are referenced to PERMIT (17'KB) (RKB)	North Reference: True north
PERMIT (17'KB) (RKB) to Mean Sea Level: 4907 feet	Scale: Grid distance
Mean Sea Level to Mud line (At Slot: SLOT#04 GE POWERS 29G-26HZ): 0 feet	Depths are in feet
Coordinates are in feet referenced to Slot	Created by: precain on 2/3/2015

Location Information

Facility Name			Grid East (US ft)	Grid North (US ft)	Latitude	Longitude
2N-65W-23 Offsets			1743038.821	14574304.203	40°07'48.198"N	104°37'58.303"W
Slot	Local N (ft)	Local E (ft)	Grid East (US ft)	Grid North (US ft)	Latitude	Longitude
SLOT#04 GE POWERS 29G-26HZ	68.49	-826.53	1742212.015	14574369.284	40°07'48.875"N	104°38'08.948"W
PERMIT (17'KB) (RKB) to Mud line (At Slot: SLOT#04 GE POWERS 29G-26HZ)					4907ft	
Mean Sea Level to Mud line (At Slot: SLOT#04 GE POWERS 29G-26HZ)					0ft	
PERMIT (17'KB) (RKB) to Mean Sea Level					4907ft	

Survey Program

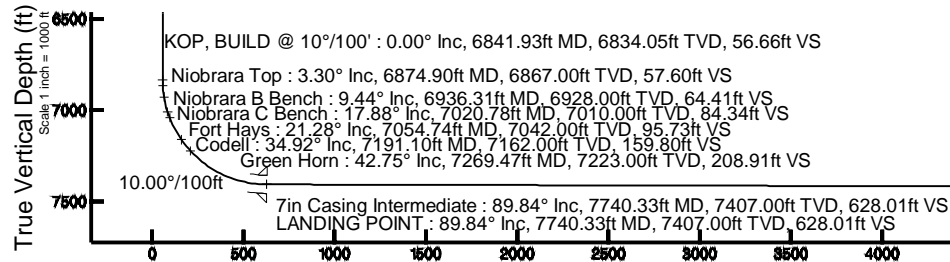
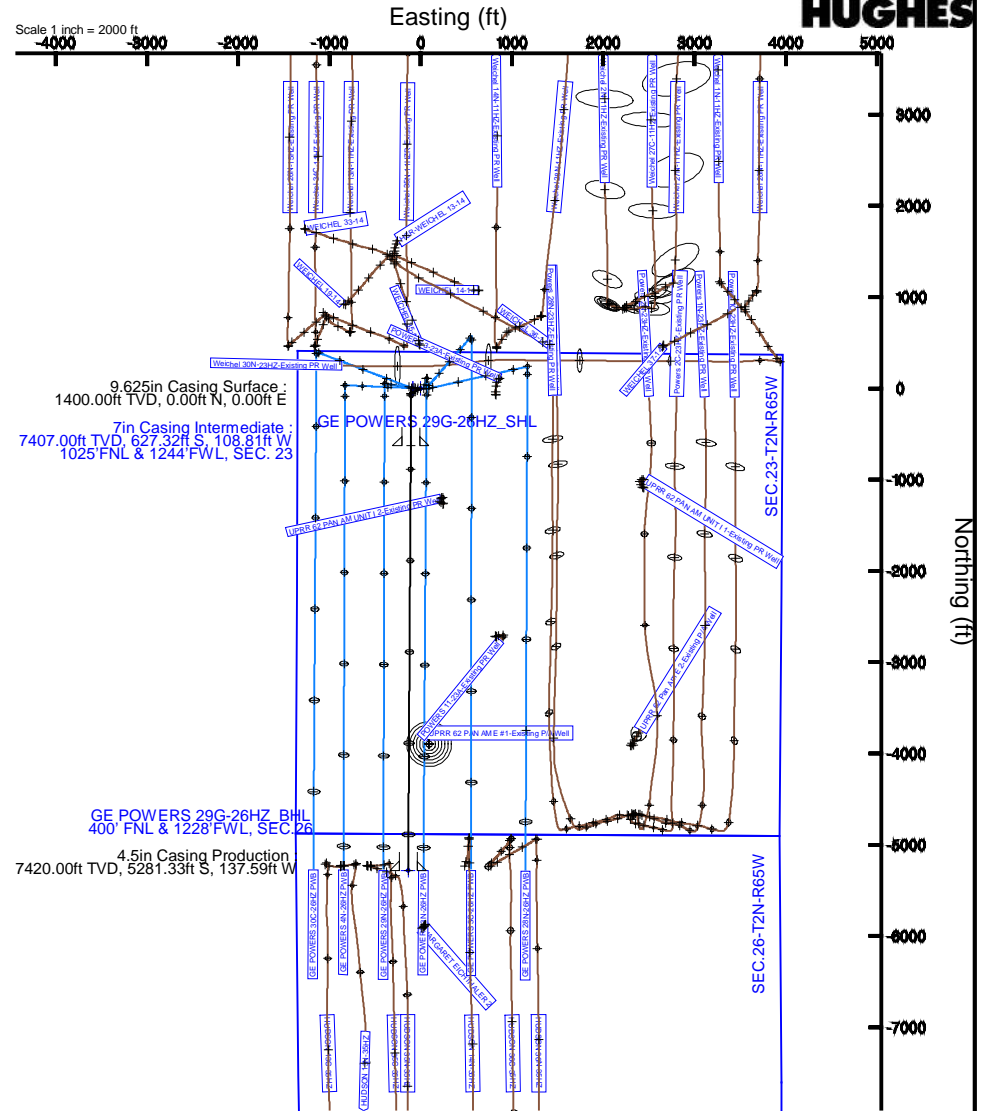
Start MD (ft)	End MD (ft)	Tool	Model	Log Name/Comment	Wellbore
17.00	12384.45	ISCIWSA MWD, Rev. 2, axial magnetic correction	ISCIWSA MWD, Rev. 2, axial magnetic correction (Standard) (MagVAR IFR Wattenberg)		GE POWERS 29G-26HZ PWB

Well Profile Data

Design Comment	MD (ft)	Inc (°)	Az (°)	TVD (ft)	Local N (ft)	Local E (ft)	DLS (°/100ft)	VS (ft)
TIE-ON	17.00	0.000	242.000	17.00	0.00	0.00	0.00	0.00
BEGIN NUDGE	1500.00	0.000	242.000	1500.00	0.00	0.00	0.00	0.00
END NUDGE	2000.00	10.000	242.000	1997.47	-20.43	-38.43	2.00	20.68
BEGIN DROP	2185.35	10.000	242.000	2180.00	-35.54	-66.85	0.00	35.98
END DROP	2685.35	0.000	180.354	2677.47	-55.98	-105.27	2.00	56.66
KOP, BUILD @ 10°/100'	6841.93	0.000	180.354	6834.05	-55.98	-105.27	0.00	56.66
LANDING POINT	7740.33	89.840	180.354	7407.00	-627.32	-108.81	10.00	628.01
TOTAL DEPTH	12394.45	89.840	180.354	7420.00	-5281.33	-137.59	0.00	5282.11

Targets

Name	MD (ft)	TVD (ft)	Local N (ft)	Local E (ft)	Grid East (US ft)	Grid North (US ft)	Latitude	Longitude
GE POWERS 29G-26HZ_SHL	4907.00	0.00	0.00	0.00	1742212.02	14574369.28	40°07'48.875"N	104°38'08.948"W
SEC.23-T2N-R65W	4907.00	0.71	-90.07	-90.07	1742121.95	14574369.62	40°07'48.882"N	104°38'10.108"W
SEC.26-T2N-R65W	4907.00	0.71	-90.07	-90.07	1742121.95	14574369.62	40°07'48.882"N	104°38'10.108"W
GE POWERS 29G-26HZ_BHL	12394.45	7420.00	-5281.33	-137.59	1742096.06	14569087.44	40°06'56.664"N	104°38'10.720"W



GE POWERS 29G-26HZ_BHL
4.5in Casing Production : 89.84° Inc, 12394.45ft MD, 7420.00ft TVD, 5282.11ft VS
TOTAL DEPTH : 89.84° Inc, 12394.45ft MD, 7420.00ft TVD, 5282.11ft VS

Vertical Section (ft)
Azimuth 180.37° with reference 0.00 N, 0.00 E

Scale 1 inch = 1000 ft

REFERENCE WELLPATH IDENTIFICATION

Operator	KERR-MCGEE OIL & GAS ONSHORE LP_1	Slot	SLOT#04 GE POWERS 29G-26HZ
Area	Compass Import	Well	GE POWERS 29G-26HZ
Field	WELD COUNTY (UTM (ZONE 13)/NAD83/TRUE NORTH)	Wellbore	GE POWERS 29G-26HZ PWB
Facility	2N-65W-23 Offsets		

REPORT SETUP INFORMATION

Projection System	NAD83 / UTM Zone 13 North, US feet	Software System	WellArchitect® 4.0.0
North Reference	True	User	Precain
Scale	0.999612	Report Generated	2/3/2015 at 3:51:17 PM
Convergence at slot	n/a	Database/Source file	WellArchitect Review/GE_POWERS_29G-26HZ_PWB.xml

WELLPATH LOCATION

	Local coordinates		Grid coordinates		Geographic coordinates	
	North[ft]	East[ft]	Easting[US ft]	Northing[US ft]	Latitude	Longitude
Slot Location	68.49	-826.53	1742212.02	14574369.28	40°07'48.875"N	104°38'08.948"W
Facility Reference Pt			1743038.82	14574304.20	40°07'48.198"N	104°37'58.303"W
Field Reference Pt			1700626.56	14568707.73	40°06'54.245"N	104°47'04.711"W

WELLPATH DATUM

Calculation method	Minimum curvature	PERMIT (17'KB) (RKB) to 2N-65W-23 Offsets vertical datum	4907.00ft
Horizontal Reference Pt	Slot	PERMIT (17'KB) (RKB) to Mean Sea Level	4907.00ft
Vertical Reference Pt	PERMIT (17'KB) (RKB)	PERMIT (17'KB) (RKB) to Mud Line at Slot (SLOT#04 GE POWERS 29G-26HZ)	4907.00ft
MD Reference Pt	PERMIT (17'KB) (RKB)	Section Origin	N 0.00, E 0.00 ft
Field Vertical Reference	Mean Sea Level	Section Azimuth	180.37°

REFERENCE WELLPATH IDENTIFICATION

Operator	KERR-MCGEE OIL & GAS ONSHORE LP_1	Slot	SLOT#04 GE POWERS 29G-26HZ
Area	Compass Import	Well	GE POWERS 29G-26HZ
Field	WELD COUNTY (UTM (ZONE 13)/NAD83/TRUE NORTH)	Wellbore	GE POWERS 29G-26HZ PWB
Facility	2N-65W-23 Offsets		

WELLPATH DATA (141 stations) † = interpolated/extrapolated station

MD [ft]	Inclination [°]	Azimuth [°]	TVD [ft]	Vert Sect [ft]	North [ft]	East [ft]	Latitude	Longitude	DLS [°/100ft]	Comments
0.00†	0.000	242.000	0.00	0.00	0.00	0.00	40°07'48.875"N	104°38'08.948"W	0.00	
17.00	0.000	242.000	17.00	0.00	0.00	0.00	40°07'48.875"N	104°38'08.948"W	0.00	TIE-ON
117.00†	0.000	242.000	117.00	0.00	0.00	0.00	40°07'48.875"N	104°38'08.948"W	0.00	
217.00†	0.000	242.000	217.00	0.00	0.00	0.00	40°07'48.875"N	104°38'08.948"W	0.00	
317.00†	0.000	242.000	317.00	0.00	0.00	0.00	40°07'48.875"N	104°38'08.948"W	0.00	
417.00†	0.000	242.000	417.00	0.00	0.00	0.00	40°07'48.875"N	104°38'08.948"W	0.00	
517.00†	0.000	242.000	517.00	0.00	0.00	0.00	40°07'48.875"N	104°38'08.948"W	0.00	
617.00†	0.000	242.000	617.00	0.00	0.00	0.00	40°07'48.875"N	104°38'08.948"W	0.00	
717.00†	0.000	242.000	717.00	0.00	0.00	0.00	40°07'48.875"N	104°38'08.948"W	0.00	
817.00†	0.000	242.000	817.00	0.00	0.00	0.00	40°07'48.875"N	104°38'08.948"W	0.00	
917.00†	0.000	242.000	917.00	0.00	0.00	0.00	40°07'48.875"N	104°38'08.948"W	0.00	
1017.00†	0.000	242.000	1017.00	0.00	0.00	0.00	40°07'48.875"N	104°38'08.948"W	0.00	
1117.00†	0.000	242.000	1117.00	0.00	0.00	0.00	40°07'48.875"N	104°38'08.948"W	0.00	
1217.00†	0.000	242.000	1217.00	0.00	0.00	0.00	40°07'48.875"N	104°38'08.948"W	0.00	
1317.00†	0.000	242.000	1317.00	0.00	0.00	0.00	40°07'48.875"N	104°38'08.948"W	0.00	
1350.00†	0.000	242.000	1350.00	0.00	0.00	0.00	40°07'48.875"N	104°38'08.948"W	0.00	Fox Hills Marker
1417.00†	0.000	242.000	1417.00	0.00	0.00	0.00	40°07'48.875"N	104°38'08.948"W	0.00	
1500.00	0.000	242.000	1500.00	0.00	0.00	0.00	40°07'48.875"N	104°38'08.948"W	0.00	BEGIN NUDGE
1517.00†	0.340	242.000	1517.00	0.02	-0.02	-0.04	40°07'48.875"N	104°38'08.949"W	2.00	
1617.00†	2.340	242.000	1616.97	1.14	-1.12	-2.11	40°07'48.864"N	104°38'08.975"W	2.00	
1717.00†	4.340	242.000	1716.79	3.90	-3.86	-7.25	40°07'48.837"N	104°38'09.041"W	2.00	
1817.00†	6.340	242.000	1816.35	8.33	-8.23	-15.47	40°07'48.794"N	104°38'09.147"W	2.00	
1917.00†	8.340	242.000	1915.53	14.40	-14.22	-26.75	40°07'48.734"N	104°38'09.293"W	2.00	
2000.00	10.000	242.000	1997.47	20.68	-20.43	-38.43	40°07'48.673"N	104°38'09.443"W	2.00	END NUDGE
2017.00†	10.000	242.000	2014.21	22.08	-21.82	-41.03	40°07'48.659"N	104°38'09.476"W	0.00	
2117.00†	10.000	242.000	2112.69	30.34	-29.97	-56.37	40°07'48.579"N	104°38'09.674"W	0.00	
2185.35	10.000	242.000	2180.00	35.98	-35.54	-66.85	40°07'48.524"N	104°38'09.809"W	0.00	BEGIN DROP
2217.00†	9.367	242.000	2211.20	38.50	-38.04	-71.55	40°07'48.499"N	104°38'09.869"W	2.00	
2317.00†	7.367	242.000	2310.13	45.42	-44.87	-84.39	40°07'48.431"N	104°38'10.035"W	2.00	
2417.00†	5.367	242.000	2409.51	50.69	-50.08	-94.19	40°07'48.380"N	104°38'10.161"W	2.00	
2517.00†	3.367	242.000	2509.21	54.31	-53.65	-100.91	40°07'48.345"N	104°38'10.248"W	2.00	
2617.00†	1.367	242.000	2609.12	56.27	-55.59	-104.55	40°07'48.325"N	104°38'10.295"W	2.00	
2685.35	0.000	180.354	2677.47	56.66	-55.98	-105.27	40°07'48.322"N	104°38'10.304"W	2.00	END DROP
2717.00†	0.000	180.354	2709.11	56.66	-55.98	-105.27	40°07'48.322"N	104°38'10.304"W	0.00	
2817.00†	0.000	180.354	2809.11	56.66	-55.98	-105.27	40°07'48.322"N	104°38'10.304"W	0.00	
2917.00†	0.000	180.354	2909.11	56.66	-55.98	-105.27	40°07'48.322"N	104°38'10.304"W	0.00	
3017.00†	0.000	180.354	3009.11	56.66	-55.98	-105.27	40°07'48.322"N	104°38'10.304"W	0.00	
3117.00†	0.000	180.354	3109.11	56.66	-55.98	-105.27	40°07'48.322"N	104°38'10.304"W	0.00	
3217.00†	0.000	180.354	3209.11	56.66	-55.98	-105.27	40°07'48.322"N	104°38'10.304"W	0.00	
3317.00†	0.000	180.354	3309.11	56.66	-55.98	-105.27	40°07'48.322"N	104°38'10.304"W	0.00	
3417.00†	0.000	180.354	3409.11	56.66	-55.98	-105.27	40°07'48.322"N	104°38'10.304"W	0.00	
3517.00†	0.000	180.354	3509.11	56.66	-55.98	-105.27	40°07'48.322"N	104°38'10.304"W	0.00	
3617.00†	0.000	180.354	3609.11	56.66	-55.98	-105.27	40°07'48.322"N	104°38'10.304"W	0.00	
3717.00†	0.000	180.354	3709.11	56.66	-55.98	-105.27	40°07'48.322"N	104°38'10.304"W	0.00	
3817.00†	0.000	180.354	3809.11	56.66	-55.98	-105.27	40°07'48.322"N	104°38'10.304"W	0.00	

REFERENCE WELLPATH IDENTIFICATION

Operator	KERR-MCGEE OIL & GAS ONSHORE LP_1	Slot	SLOT#04 GE POWERS 29G-26HZ
Area	Compass Import	Well	GE POWERS 29G-26HZ
Field	WELD COUNTY (UTM (ZONE 13)/NAD83/TRUE NORTH)	Wellbore	GE POWERS 29G-26HZ PWB
Facility	2N-65W-23 Offsets		

WELLPATH DATA (141 stations) † = interpolated/extrapolated station

MD [ft]	Inclination [°]	Azimuth [°]	TVD [ft]	Vert Sect [ft]	North [ft]	East [ft]	Latitude	Longitude	DLS [°/100ft]	Comments
3917.00†	0.000	180.354	3909.11	56.66	-55.98	-105.27	40°07'48.322"N	104°38'10.304"W	0.00	
4017.00†	0.000	180.354	4009.11	56.66	-55.98	-105.27	40°07'48.322"N	104°38'10.304"W	0.00	
4117.00†	0.000	180.354	4109.11	56.66	-55.98	-105.27	40°07'48.322"N	104°38'10.304"W	0.00	
4217.00†	0.000	180.354	4209.11	56.66	-55.98	-105.27	40°07'48.322"N	104°38'10.304"W	0.00	
4317.00†	0.000	180.354	4309.11	56.66	-55.98	-105.27	40°07'48.322"N	104°38'10.304"W	0.00	
4417.00†	0.000	180.354	4409.11	56.66	-55.98	-105.27	40°07'48.322"N	104°38'10.304"W	0.00	
4498.89†	0.000	180.354	4491.00	56.66	-55.98	-105.27	40°07'48.322"N	104°38'10.304"W	0.00	Sussex
4517.00†	0.000	180.354	4509.11	56.66	-55.98	-105.27	40°07'48.322"N	104°38'10.304"W	0.00	
4617.00†	0.000	180.354	4609.11	56.66	-55.98	-105.27	40°07'48.322"N	104°38'10.304"W	0.00	
4717.00†	0.000	180.354	4709.11	56.66	-55.98	-105.27	40°07'48.322"N	104°38'10.304"W	0.00	
4817.00†	0.000	180.354	4809.11	56.66	-55.98	-105.27	40°07'48.322"N	104°38'10.304"W	0.00	
4917.00†	0.000	180.354	4909.11	56.66	-55.98	-105.27	40°07'48.322"N	104°38'10.304"W	0.00	
5017.00†	0.000	180.354	5009.11	56.66	-55.98	-105.27	40°07'48.322"N	104°38'10.304"W	0.00	
5117.00†	0.000	180.354	5109.11	56.66	-55.98	-105.27	40°07'48.322"N	104°38'10.304"W	0.00	
5217.00†	0.000	180.354	5209.11	56.66	-55.98	-105.27	40°07'48.322"N	104°38'10.304"W	0.00	
5317.00†	0.000	180.354	5309.11	56.66	-55.98	-105.27	40°07'48.322"N	104°38'10.304"W	0.00	
5417.00†	0.000	180.354	5409.11	56.66	-55.98	-105.27	40°07'48.322"N	104°38'10.304"W	0.00	
5517.00†	0.000	180.354	5509.11	56.66	-55.98	-105.27	40°07'48.322"N	104°38'10.304"W	0.00	
5617.00†	0.000	180.354	5609.11	56.66	-55.98	-105.27	40°07'48.322"N	104°38'10.304"W	0.00	
5717.00†	0.000	180.354	5709.11	56.66	-55.98	-105.27	40°07'48.322"N	104°38'10.304"W	0.00	
5817.00†	0.000	180.354	5809.11	56.66	-55.98	-105.27	40°07'48.322"N	104°38'10.304"W	0.00	
5917.00†	0.000	180.354	5909.11	56.66	-55.98	-105.27	40°07'48.322"N	104°38'10.304"W	0.00	
6017.00†	0.000	180.354	6009.11	56.66	-55.98	-105.27	40°07'48.322"N	104°38'10.304"W	0.00	
6117.00†	0.000	180.354	6109.11	56.66	-55.98	-105.27	40°07'48.322"N	104°38'10.304"W	0.00	
6217.00†	0.000	180.354	6209.11	56.66	-55.98	-105.27	40°07'48.322"N	104°38'10.304"W	0.00	
6317.00†	0.000	180.354	6309.11	56.66	-55.98	-105.27	40°07'48.322"N	104°38'10.304"W	0.00	
6396.89†	0.000	180.354	6389.00	56.66	-55.98	-105.27	40°07'48.322"N	104°38'10.304"W	0.00	Sharon Springs
6417.00†	0.000	180.354	6409.11	56.66	-55.98	-105.27	40°07'48.322"N	104°38'10.304"W	0.00	
6517.00†	0.000	180.354	6509.11	56.66	-55.98	-105.27	40°07'48.322"N	104°38'10.304"W	0.00	
6617.00†	0.000	180.354	6609.11	56.66	-55.98	-105.27	40°07'48.322"N	104°38'10.304"W	0.00	
6717.00†	0.000	180.354	6709.11	56.66	-55.98	-105.27	40°07'48.322"N	104°38'10.304"W	0.00	
6817.00†	0.000	180.354	6809.11	56.66	-55.98	-105.27	40°07'48.322"N	104°38'10.304"W	0.00	
6841.93	0.000	180.354	6834.05	56.66	-55.98	-105.27	40°07'48.322"N	104°38'10.304"W	0.00	KOP, BUILD @ 10°/100'
6874.90†	3.297	180.354	6867.00	57.60	-56.92	-105.28	40°07'48.312"N	104°38'10.304"W	10.00	Niobrara Top
6917.00†	7.507	180.354	6908.90	61.57	-60.89	-105.31	40°07'48.273"N	104°38'10.304"W	10.00	
6936.31†	9.438	180.354	6928.00	64.41	-63.73	-105.32	40°07'48.245"N	104°38'10.304"W	10.00	Niobrara B Bench
7017.00†	17.507	180.354	7006.40	83.20	-82.51	-105.44	40°07'48.059"N	104°38'10.306"W	10.00	
7020.78†	17.884	180.354	7010.00	84.34	-83.66	-105.45	40°07'48.048"N	104°38'10.306"W	10.00	Niobrara C Bench
7054.74†	21.281	180.354	7042.00	95.73	-95.05	-105.52	40°07'47.935"N	104°38'10.307"W	10.00	Fort Hays
7117.00†	27.507	180.354	7098.67	121.43	-120.74	-105.68	40°07'47.681"N	104°38'10.309"W	10.00	
7191.10†	34.917	180.354	7162.00	159.80	-159.12	-105.91	40°07'47.302"N	104°38'10.312"W	10.00	Codell
7217.00†	37.507	180.354	7182.90	175.10	-174.42	-106.01	40°07'47.151"N	104°38'10.313"W	10.00	
7269.47†	42.754	180.354	7223.00	208.91	-208.22	-106.22	40°07'46.817"N	104°38'10.316"W	10.00	Green Horn
7317.00†	47.507	180.354	7256.52	242.58	-241.90	-106.42	40°07'46.484"N	104°38'10.319"W	10.00	
7417.00†	57.507	180.354	7317.31	321.82	-321.14	-106.91	40°07'45.700"N	104°38'10.325"W	10.00	

REFERENCE WELLPATH IDENTIFICATION

Operator	KERR-MCGEE OIL & GAS ONSHORE LP_1	Slot	SLOT#04 GE POWERS 29G-26HZ
Area	Compass Import	Well	GE POWERS 29G-26HZ
Field	WELD COUNTY (UTM (ZONE 13)/NAD83/TRUE NORTH)	Wellbore	GE POWERS 29G-26HZ PWB
Facility	2N-65W-23 Offsets		

WELLPATH DATA (141 stations) † = interpolated/extrapolated station

MD [ft]	Inclination [°]	Azimuth [°]	TVD [ft]	Vert Sect [ft]	North [ft]	East [ft]	Latitude	Longitude	DLS [°/100ft]	Comments
7517.00†	67.507	180.354	7363.42	410.42	-409.73	-107.46	40°07'44.824"N	104°38'10.332"W	10.00	
7617.00†	77.507	180.354	7393.44	505.67	-504.98	-108.05	40°07'43.883"N	104°38'10.340"W	10.00	
7717.00†	87.507	180.354	7406.46	604.69	-604.00	-108.66	40°07'42.904"N	104°38'10.347"W	10.00	
7740.33	89.840	180.354	7407.00	628.01	-627.32	-108.81	40°07'42.673"N	104°38'10.349"W	10.00	LANDING POINT
7817.00†	89.840	180.354	7407.22	704.68	-703.99	-109.28	40°07'41.915"N	104°38'10.355"W	0.00	
7917.00†	89.840	180.354	7407.49	804.68	-803.99	-109.90	40°07'40.927"N	104°38'10.363"W	0.00	
8017.00†	89.840	180.354	7407.77	904.68	-903.99	-110.52	40°07'39.938"N	104°38'10.371"W	0.00	
8117.00†	89.840	180.354	7408.05	1004.68	-1003.98	-111.14	40°07'38.950"N	104°38'10.379"W	0.00	
8217.00†	89.840	180.354	7408.33	1104.68	-1103.98	-111.76	40°07'37.961"N	104°38'10.387"W	0.00	
8317.00†	89.840	180.354	7408.61	1204.68	-1203.98	-112.37	40°07'36.973"N	104°38'10.395"W	0.00	
8417.00†	89.840	180.354	7408.89	1304.68	-1303.98	-112.99	40°07'35.984"N	104°38'10.403"W	0.00	
8517.00†	89.840	180.354	7409.17	1404.68	-1403.97	-113.61	40°07'34.995"N	104°38'10.411"W	0.00	
8617.00†	89.840	180.354	7409.45	1504.68	-1503.97	-114.23	40°07'34.007"N	104°38'10.419"W	0.00	
8717.00†	89.840	180.354	7409.73	1604.68	-1603.97	-114.85	40°07'33.018"N	104°38'10.427"W	0.00	
8817.00†	89.840	180.354	7410.01	1704.68	-1703.97	-115.47	40°07'32.030"N	104°38'10.435"W	0.00	
8917.00†	89.840	180.354	7410.29	1804.68	-1803.96	-116.08	40°07'31.041"N	104°38'10.443"W	0.00	
9017.00†	89.840	180.354	7410.57	1904.68	-1903.96	-116.70	40°07'30.053"N	104°38'10.451"W	0.00	
9117.00†	89.840	180.354	7410.85	2004.68	-2003.96	-117.32	40°07'29.064"N	104°38'10.459"W	0.00	
9217.00†	89.840	180.354	7411.13	2104.68	-2103.96	-117.94	40°07'28.075"N	104°38'10.467"W	0.00	
9317.00†	89.840	180.354	7411.40	2204.68	-2203.96	-118.56	40°07'27.087"N	104°38'10.475"W	0.00	
9417.00†	89.840	180.354	7411.68	2304.68	-2303.95	-119.18	40°07'26.098"N	104°38'10.483"W	0.00	
9517.00†	89.840	180.354	7411.96	2404.68	-2403.95	-119.79	40°07'25.110"N	104°38'10.491"W	0.00	
9617.00†	89.840	180.354	7412.24	2504.68	-2503.95	-120.41	40°07'24.121"N	104°38'10.499"W	0.00	
9717.00†	89.840	180.354	7412.52	2604.68	-2603.95	-121.03	40°07'23.133"N	104°38'10.507"W	0.00	
9817.00†	89.840	180.354	7412.80	2704.68	-2703.94	-121.65	40°07'22.144"N	104°38'10.515"W	0.00	
9917.00†	89.840	180.354	7413.08	2804.67	-2803.94	-122.27	40°07'21.155"N	104°38'10.523"W	0.00	
10017.00†	89.840	180.354	7413.36	2904.67	-2903.94	-122.89	40°07'20.167"N	104°38'10.530"W	0.00	
10117.00†	89.840	180.354	7413.64	3004.67	-3003.94	-123.50	40°07'19.178"N	104°38'10.538"W	0.00	
10217.00†	89.840	180.354	7413.92	3104.67	-3103.93	-124.12	40°07'18.190"N	104°38'10.546"W	0.00	
10317.00†	89.840	180.354	7414.20	3204.67	-3203.93	-124.74	40°07'17.201"N	104°38'10.554"W	0.00	
10417.00†	89.840	180.354	7414.48	3304.67	-3303.93	-125.36	40°07'16.213"N	104°38'10.562"W	0.00	
10517.00†	89.840	180.354	7414.76	3404.67	-3403.93	-125.98	40°07'15.224"N	104°38'10.570"W	0.00	
10617.00†	89.840	180.354	7415.04	3504.67	-3503.93	-126.60	40°07'14.235"N	104°38'10.578"W	0.00	
10717.00†	89.840	180.354	7415.31	3604.67	-3603.92	-127.22	40°07'13.247"N	104°38'10.586"W	0.00	
10817.00†	89.840	180.354	7415.59	3704.67	-3703.92	-127.83	40°07'12.258"N	104°38'10.594"W	0.00	
10917.00†	89.840	180.354	7415.87	3804.67	-3803.92	-128.45	40°07'11.270"N	104°38'10.602"W	0.00	
11017.00†	89.840	180.354	7416.15	3904.67	-3903.92	-129.07	40°07'10.281"N	104°38'10.610"W	0.00	
11117.00†	89.840	180.354	7416.43	4004.67	-4003.91	-129.69	40°07'09.293"N	104°38'10.618"W	0.00	
11217.00†	89.840	180.354	7416.71	4104.67	-4103.91	-130.31	40°07'08.304"N	104°38'10.626"W	0.00	
11317.00†	89.840	180.354	7416.99	4204.67	-4203.91	-130.93	40°07'07.315"N	104°38'10.634"W	0.00	
11417.00†	89.840	180.354	7417.27	4304.67	-4303.91	-131.54	40°07'06.327"N	104°38'10.642"W	0.00	
11517.00†	89.840	180.354	7417.55	4404.67	-4403.90	-132.16	40°07'05.338"N	104°38'10.650"W	0.00	
11617.00†	89.840	180.354	7417.83	4504.67	-4503.90	-132.78	40°07'04.350"N	104°38'10.658"W	0.00	
11717.00†	89.840	180.354	7418.11	4604.67	-4603.90	-133.40	40°07'03.361"N	104°38'10.666"W	0.00	
11817.00†	89.840	180.354	7418.39	4704.67	-4703.90	-134.02	40°07'02.373"N	104°38'10.674"W	0.00	

REFERENCE WELLPATH IDENTIFICATION

Operator	KERR-MCGEE OIL & GAS ONSHORE LP_1	Slot	SLOT#04 GE POWERS 29G-26HZ
Area	Compass Import	Well	GE POWERS 29G-26HZ
Field	WELD COUNTY (UTM (ZONE 13)/NAD83/TRUE NORTH)	Wellbore	GE POWERS 29G-26HZ PWB
Facility	2N-65W-23 Offsets		

WELLPATH DATA (141 stations) † = interpolated/extrapolated station

MD [ft]	Inclination [°]	Azimuth [°]	TVD [ft]	Vert Sect [ft]	North [ft]	East [ft]	Latitude	Longitude	DLS [°/100ft]	Comments
11917.00†	89.840	180.354	7418.67	4804.67	-4803.90	-134.64	40°07'01.384"N	104°38'10.682"W	0.00	
12017.00†	89.840	180.354	7418.95	4904.67	-4903.89	-135.25	40°07'00.395"N	104°38'10.690"W	0.00	
12117.00†	89.840	180.354	7419.23	5004.67	-5003.89	-135.87	40°06'59.407"N	104°38'10.698"W	0.00	
12217.00†	89.840	180.354	7419.50	5104.67	-5103.89	-136.49	40°06'58.418"N	104°38'10.705"W	0.00	
12317.00†	89.840	180.354	7419.78	5204.67	-5203.89	-137.11	40°06'57.430"N	104°38'10.713"W	0.00	
12394.45	89.840	180.354	7420.00 ¹	5282.11	-5281.33	-137.59	40°06'56.664"N	104°38'10.720"W	0.00	TOTAL DEPTH

HOLE & CASING SECTIONS - Ref Wellbore: GE POWERS 29G-26HZ PWB Ref Wellpath: GE POWERS 29G-26HZ (PERMIT REV-1) PWP

String/Diameter	Start MD [ft]	End MD [ft]	Interval [ft]	Start TVD [ft]	End TVD [ft]	Start N/S [ft]	Start E/W [ft]	End N/S [ft]	End E/W [ft]
13.5in Open Hole	17.00	1400.00	1383.00	17.00	1400.00	0.00	0.00	0.00	0.00
9.625in Casing Surface	17.00	1400.00	1383.00	17.00	1400.00	0.00	0.00	0.00	0.00
8.75in Open Hole	1400.00	7740.33	6340.33	1400.00	7407.00	0.00	0.00	-627.32	-108.81
7in Casing Intermediate	17.00	7740.33	7723.33	17.00	7407.00	0.00	0.00	-627.32	-108.81
6.125in Open Hole	7740.33	12394.45	4654.12	7407.00	7420.00	-627.32	-108.81	-5281.33	-137.59
4.5in Casing Production	17.00	12394.45	12377.45	17.00	7420.00	0.00	0.00	-5281.33	-137.59

TARGETS

Name	MD [ft]	TVD [ft]	North [ft]	East [ft]	Grid East [US ft]	Grid North [US ft]	Latitude	Longitude	Shape
GE POWERS 29G-26HZ_SHL		4907.00	0.00	0.00	1742212.02	14574369.28	40°07'48.875"N	104°38'08.948"W	point
SEC.23-T2N-R65W		4907.00	0.71	-90.07	1742121.95	14574369.62	40°07'48.882"N	104°38'10.108"W	polygon
SEC.26-T2N-R65W		4907.00	0.71	-90.07	1742121.95	14574369.62	40°07'48.882"N	104°38'10.108"W	polygon
1) GE POWERS 29G-26HZ_BHL	12394.45	7420.00	-5281.33	-137.59	1742096.06	14569087.44	40°06'56.664"N	104°38'10.720"W	point

SURVEY PROGRAM - Ref Wellbore: GE POWERS 29G-26HZ PWB Ref Wellpath: GE POWERS 29G-26HZ (PERMIT REV-1) PWP

Start MD [ft]	End MD [ft]	Positional Uncertainty Model	Log Name/Comment	Wellbore
17.00	12394.45	ISCWSA MWD, Rev. 2, axial magnetic correction (Standard) (MagVAR IFR Wattenberg)		GE POWERS 29G-26HZ PWB

REFERENCE WELLPATH IDENTIFICATION

Operator	KERR-MCGEE OIL & GAS ONSHORE LP_1	Slot	SLOT#04 GE POWERS 29G-26HZ
Area	Compass Import	Well	GE POWERS 29G-26HZ
Field	WELD COUNTY (UTM (ZONE 13)/NAD83/TRUE NORTH)	Wellbore	GE POWERS 29G-26HZ PWB
Facility	2N-65W-23 Offsets		

WELLPATH COMMENTS

MD [ft]	Inclination [°]	Azimuth [°]	TVD [ft]	Comment
1350.00	0.000	242.000	1350.00	Fox Hills Marker
4498.89	0.000	180.354	4491.00	Sussex
6396.89	0.000	180.354	6389.00	Sharon Springs
6874.90	3.297	180.354	6867.00	Niobrara Top
6936.31	9.438	180.354	6928.00	Niobrara B Bench
7020.78	17.884	180.354	7010.00	Niobrara C Bench
7054.74	21.281	180.354	7042.00	Fort Hays
7191.10	34.917	180.354	7162.00	Codell
7269.47	42.754	180.354	7223.00	Green Horn

DESIGN COMMENTS

MD [ft]	Inclination [°]	Azimuth [°]	TVD [ft]	Comment
17.00	0.000	242.000	17.00	TIE-ON
1500.00	0.000	242.000	1500.00	BEGIN NUDGE
2000.00	10.000	242.000	1997.47	END NUDGE
2185.35	10.000	242.000	2180.00	BEGIN DROP
2685.35	0.000	180.354	2677.47	END DROP
6841.93	0.000	180.354	6834.05	KOP, BUILD @ 10°/100'
7740.33	89.840	180.354	7407.00	LANDING POINT
12394.45	89.840	180.354	7420.00	TOTAL DEPTH