

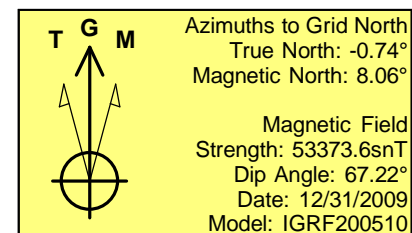
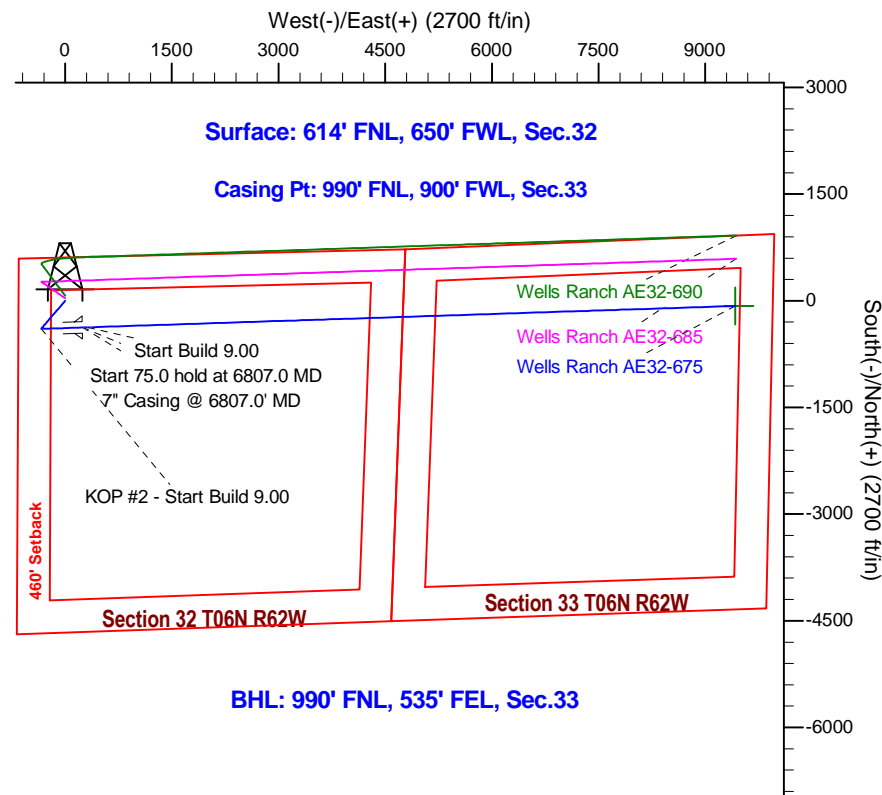
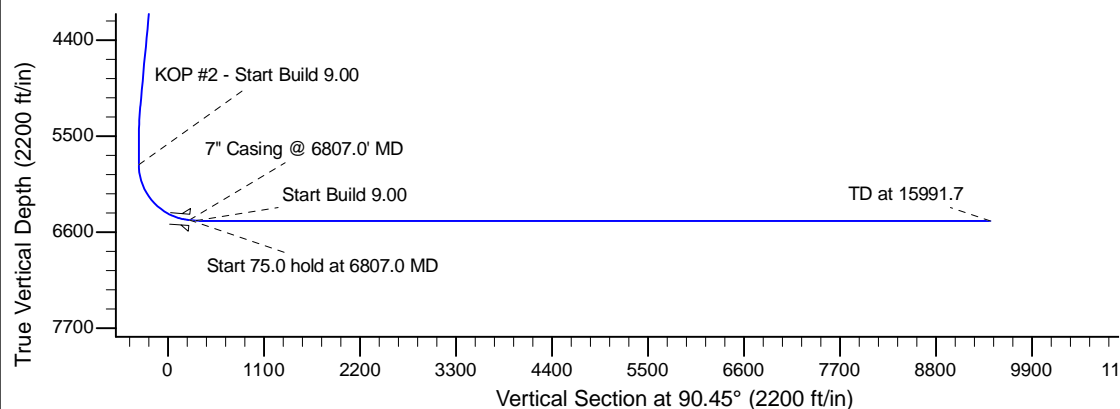
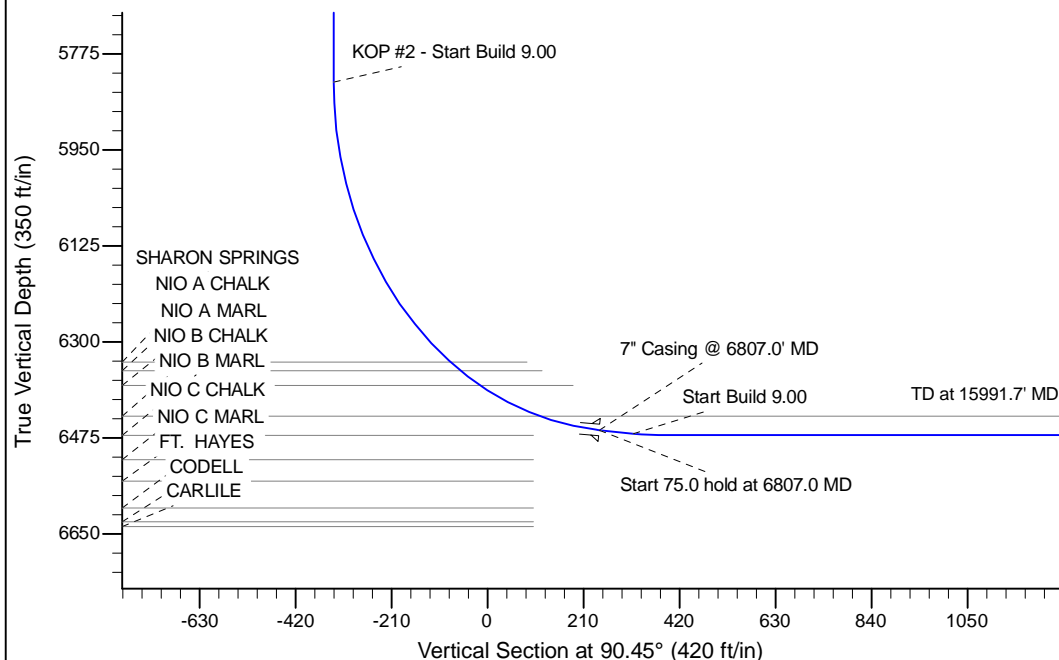
Project: Wattenberg Field
 Site: AE (Sec.32-T06N-R62W) Weld County, CO
 Well: Wells Ranch AE32-675
 Wellbore: Original Drilling
 Design: APD - Rev 0

Northern Region Drilling - Working

Geodetic System: US State Plane 1983
 Datum: North American Datum 1983
 Ellipsoid: GRS 1980
 Zone: Colorado Northern Zone
 System Datum: Mean Sea Level

SECTION DETAILS

Sec	MD	Inc	Azi	TVD	+N/-S	+E/-W	Dleg	TFace	VFace	Target
1	0.0	0.00	0.00	0.0	0.0	0.0	0.00	0.00	0.0	
2	1500.0	0.00	0.00	1500.0	0.0	0.0	0.00	0.00	0.0	
3	1907.2	8.14	220.72	1905.8	-21.9	-18.8	2.00	220.72	-18.7	
4	5178.5	8.14	220.72	5144.2	-373.1	-321.2	0.00	0.00	-318.2	
5	5585.7	0.00	0.00	5550.0	-395.0	-340.0	2.00	180.00	-336.9	
6	5862.6	0.00	0.00	5826.8	-395.0	-340.0	0.00	0.00	-336.9	
7	6807.0	85.00	88.11	6461.0	-375.9	240.8	9.00	88.11	243.7	
8	6882.0	85.00	88.11	6467.6	-373.4	315.5	0.00	0.00	318.4	
9	6937.6	90.00	88.11	6470.0	-371.6	370.9	9.00	0.00	373.8	
10	15991.7	90.00	88.11	6470.0	-73.2	9420.2	0.00	0.00	9420.5	Wells Ranch AE32-675 BHL 990'FNL, 535'FEL



WELL DETAILS: Wells Ranch AE32-675					
Ground Level: 4747.0					
0.0	0.0	Northing	Eastings	Latitude	Longitude
		1408380.05	3318870.47	40.448750	-104.354230

Plan: APD - Rev 0 (Wells Ranch AE32-675/Original Drilling)

Created By: Shailey Jewell Date: 9:54, March 26 2015

OK to submit with 2A as per Noble Drilling
 3/26/2015 9:56