

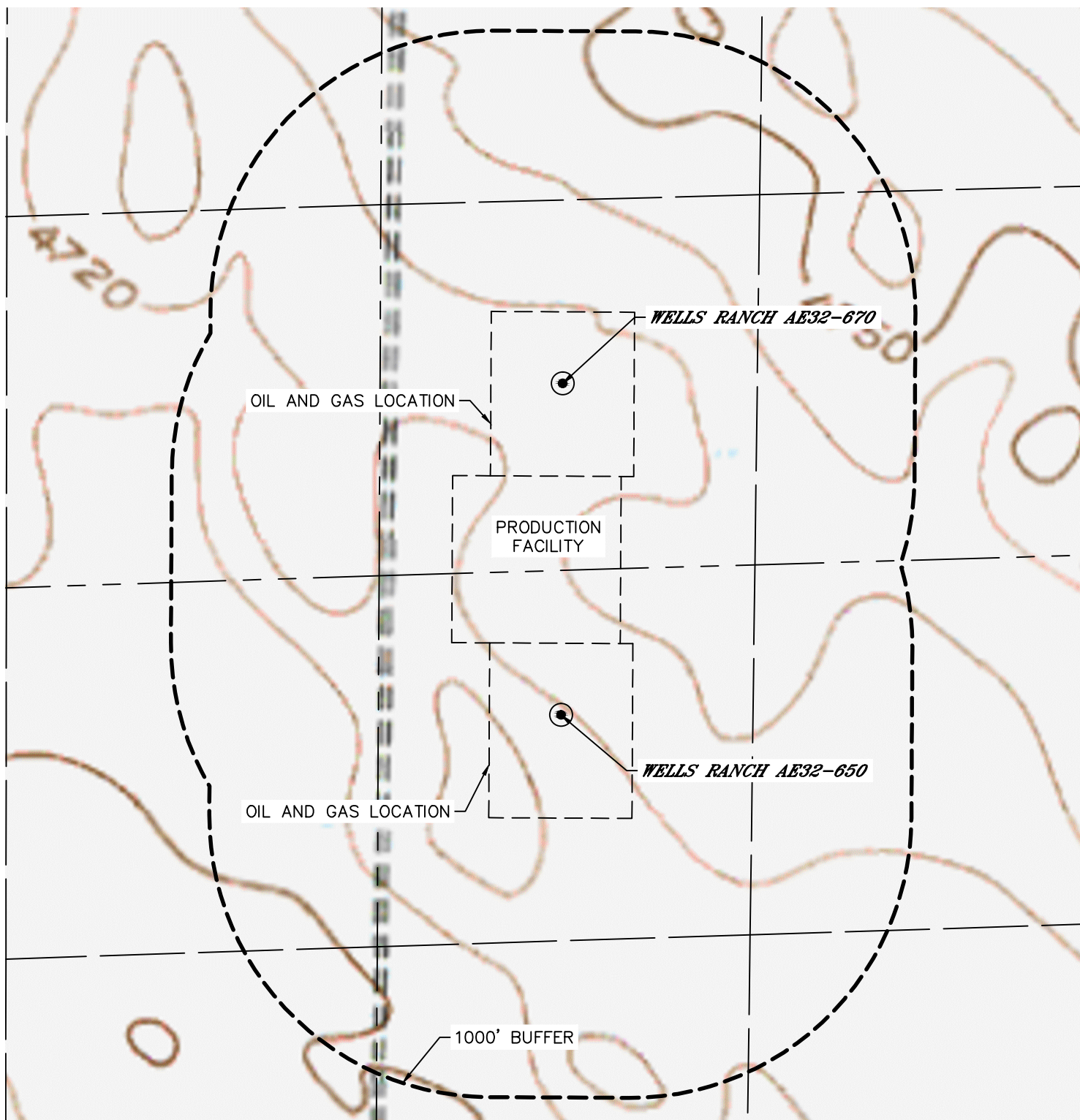


Lat40°, Inc. 6250 W. 10th Street, Unit 2, Greeley, CO 970-515-5294

HYDROLOGY MAP

WELLS RANCH AE32-670 PAD & WELLS RANCH AE32-650 PAD

SECTION: 32
TOWNSHIP: 6N
RANGE: 62W
6TH. P.M.
WELD COUNTY, CO



NO VISIBLE SURFACE WATER WITHIN 1000'

DATE: 02/09/2015
PROJECT#: 2014215