

Kyle E. Rutz—On behalf of Land ID, Inc.  
Colorado Licensed Professional Land Surveyor No. 38307  
DATE: 02/09/2015  
PROJECT#: 2014215

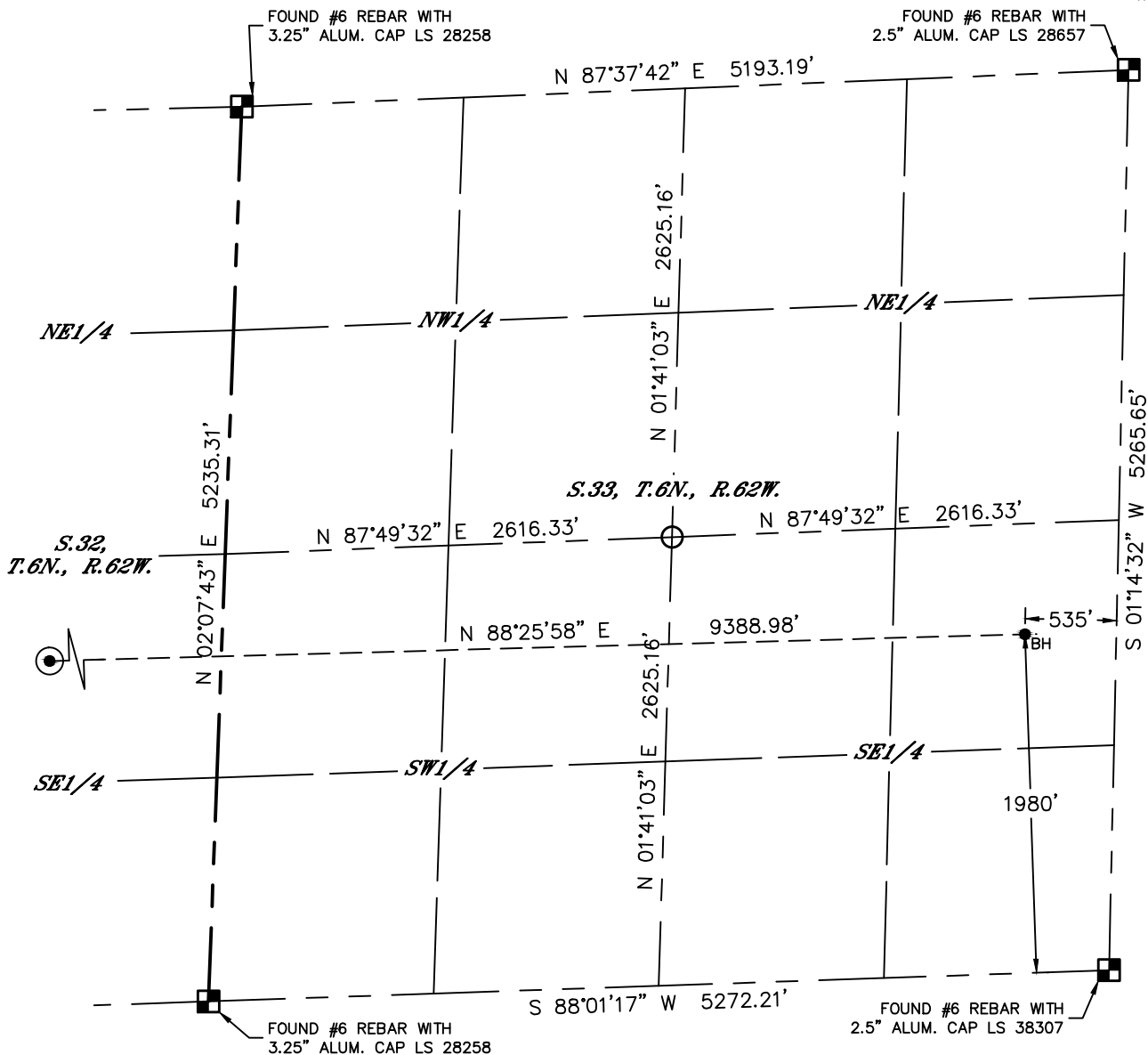


Lat40°, Inc. 6250 W. 10th Street, Unit 2, Greeley, CO 970-515-5294

# WELL LOCATION CERTIFICATE

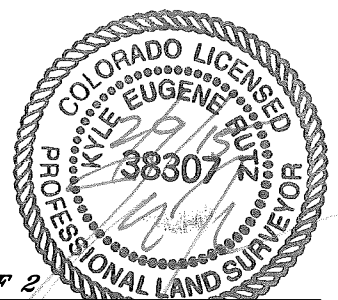
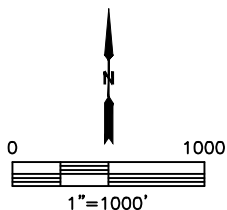
WELLS RANCH AE32-640

SECTION: 32  
TOWNSHIP: 6N  
RANGE: 62W  
6TH. P.M.  
WELD COUNTY, CO



## LEGEND

- = ALIQUOT MONUMENT AS DESCRIBED
- = CALCULATED POSITION
- ⊙ = SURFACE HOLE LOCATION (SHL)
- ▲ = ENTRY POINT LOCATION (EP)
- = BOTTOM HOLE LOCATION (BHL)
- ⊕ = EXISTING WELL
- ⊖ = ABANDONED WELL



SHEET 2 OF 2

Kyle E. Rutz—On behalf of Lat40, Inc.  
Colorado Licensed Professional Land Surveyor No. 38307  
DATE: 02/09/2015  
PROJECT#: 2014215