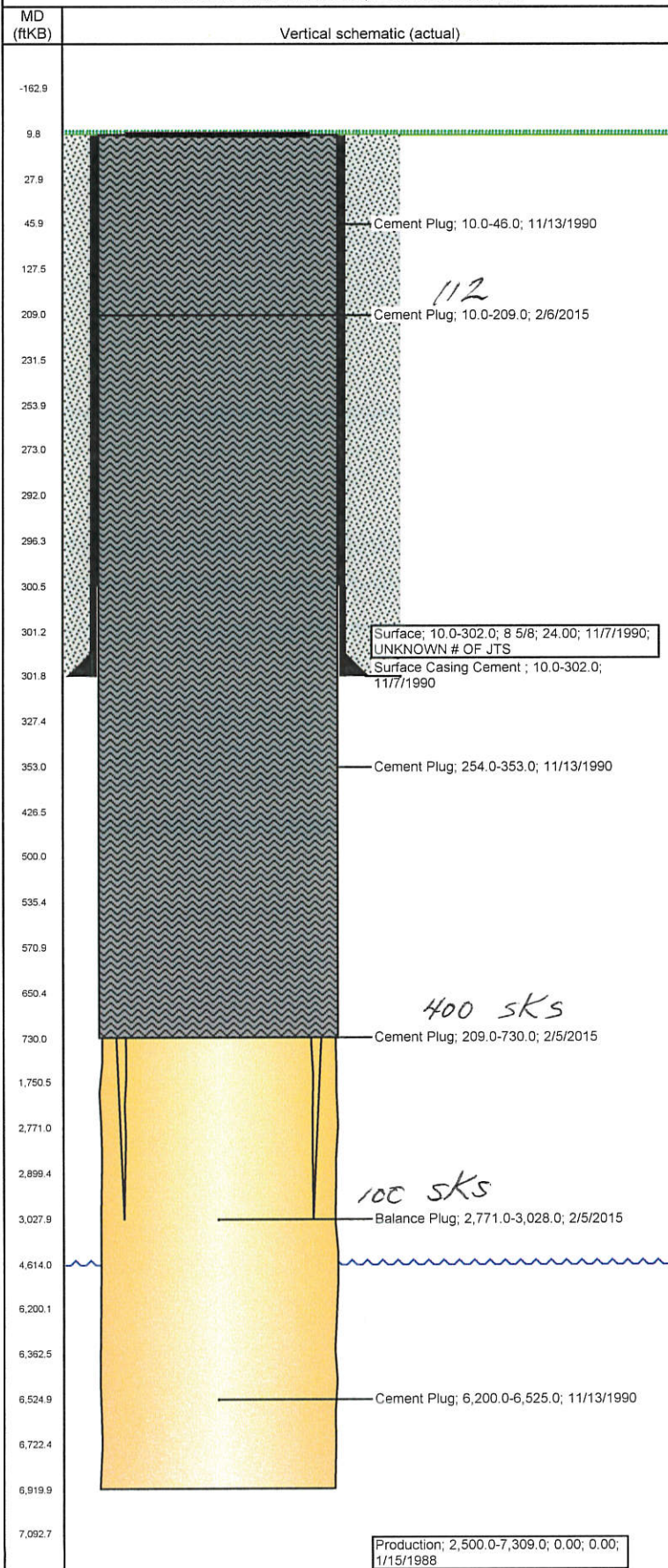


Well Name: STATE A-36-01

VERTICAL - ORIGINAL HOLE, 2/18/2015 9:39:58 AM



Well Header									
API 05-123-14719		Business Unit DJ BASIN		District 15		Well Config VERTICAL			
Original KB Elevation (ft) 4,642.00		KB - GL / MSL (ftKB) 10.00		Spud Date 11/7/1990		P & A Date 2/6/2015			
Comment WELL DATA SPARSE. WBI RE-ENTRY									
Directions To Well FROM WCR 59 & WCR 64 GO 1.0 MILE TO WCR 61, GO SOUTH 0.1 & WEST INTO									
Congressional Location									
Quarter 1	Quarter 2	Quarter 3 NE	Quarter 4 NE	Section 36	Township 6	Twnshp N... N	Range 64	Rng E/W Dir W	
Bottom Hole Location									
North-South Distance (ft)			From N or S Line		East-West Distance (ft)			From E or W Line	
Plug Back Total Depths									
Date		Depth (ftKB)		Method		Com			
2/6/2015		10.0		CEMENT TO SURFACE					
Wellbore Sections									
Section Des			Size (in)		Act Top, MD (ftKB)		Act Btm, MD (ftKB)		
SURFACE			12 1/4		10.0		302.0		
SURFACE			6 1/4		10.0		3,028.0		
PRODUCTION			7 7/8		302.0		6,920.0		
Zone Statuses									
Zone Name		Status Date		Status		Job			
NIOBRARA		2/6/2015		P&A		HORIZONTAL WELL PREP, 1/30/2015 07:00			
Casing Strings									
Surface, 302.0ftKB									
Casing Description		Run Date		OD (in)	Wt/Len (l...	Grade	Top, MD (ft...	MD (ftKB)	
Surface		11/7/1990		8 5/8	24.00		10.0	302.0	
Production, 7,309.0ftKB									
Casing Description		Run Date		OD (in)	Wt/Len (l...	Grade	Top, MD (ft...	MD (ftKB)	
Production		1/15/1988						7,309.0	
Cement									
Description					Top Depth (ftKB)		Bottom Depth (ftKB)		
Surface Casing Cement					10.0		302.0		
Description					Top Depth (ftKB)		Bottom Depth (ftKB)		
Cement Plug					254.0		353.0		
Description					Top Depth (ftKB)		Bottom Depth (ftKB)		
Cement Plug					10.0		46.0		
Description					Top Depth (ftKB)		Bottom Depth (ftKB)		
Cement Plug					6,200.0		6,525.0		
Description					Top Depth (ftKB)		Bottom Depth (ftKB)		
Balance Plug					2,771.0		3,028.0		
Description					Top Depth (ftKB)		Bottom Depth (ftKB)		
Cement Plug					209.0		730.0		
Description					Top Depth (ftKB)		Bottom Depth (ftKB)		
Cement Plug					10.0		209.0		
Tubing Strings									
Tubing Description		Run Date		String...	ID (in)	Wt (lb/ft)	Grade	Len (ft)	Set De...
Perforation Data									
Zone		Bnch/St g	Entered Shot Total	Top (ftKB)		Btm (ftKB)		Date	
Other In Hole									
Run Date		Des			OD (in)		Top (ftKB)		Btm (ftKB)
Logs									
Date		Type				Top, MD (ftKB)		Btm, MD (ftKB)	
11/12/1990		INDUCTION				300.0		6,929.0	
11/12/1990		MICRO-RESISTIVITY				3,440.0		3,750.0	