

T5N, R62W, 6th P.M.

BILL BARRETT CORPORATION

ANSCHUTZ STATE 5-62-22 23 NWNW PAD

#5-62-22-1609B2

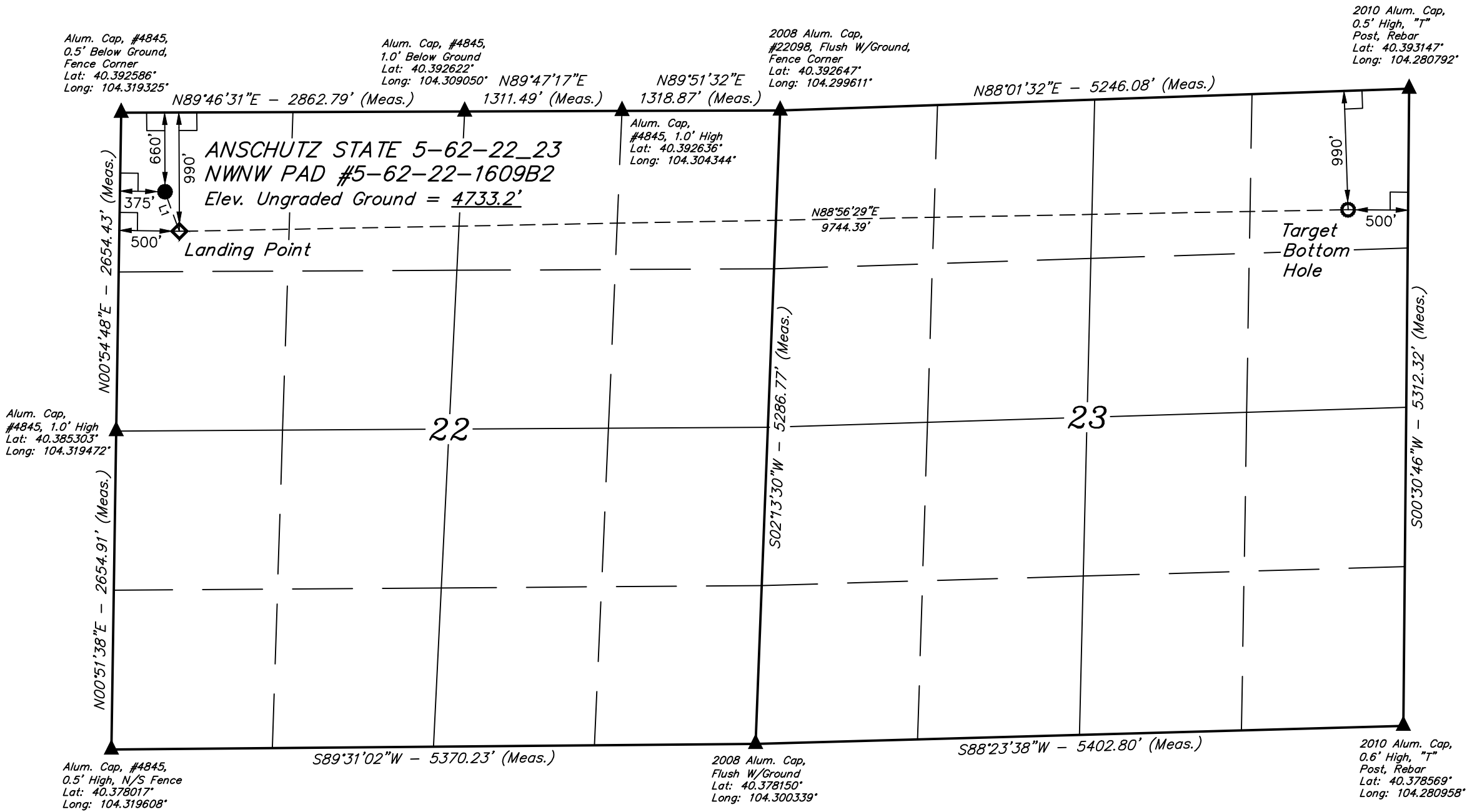
NW 1/4 NW 1/4, SECTION 22, T5N, R62W, 6th P.M.
WELD COUNTY, COLORADO

BASIS OF BEARINGS

BASIS OF BEARINGS IS A G.P.S. OBSERVATION

BASIS OF ELEVATION

SPOT ELEVATION LOCATED AT THE NORTHEAST CORNER OF SECTION 24, T5N, R62W, 6th P.M. TAKEN FROM THE POINT OF ROCKS, QUADRANGLE, COLORADO, WELD COUNTY, 7.5 MINUTE QUAD (TOPOGRAPHIC MAP) PUBLISHED BY THE UNITED STATES DEPARTMENT OF THE INTERIOR, GEOLOGICAL SURVEY. SAID ELEVATION IS MARKED AS BEING 4530 FEET.



LINE TABLE		
LINE	DIRECTION	LENGTH
L1	S19°58'20"E	350.65'

CERTIFICATE

THIS IS TO CERTIFY THAT THE ABOVE PLAT WAS PREPARED FROM FIELD NOTES OF ACTUAL SURVEYS MADE BY ME OR UNDER MY SUPERVISION, AND THAT THE SAME ARE TRUE AND CORRECT TO THE BEST OF MY KNOWLEDGE AND BELIEF.

REGISTERED LAND SURVEYOR
REGISTRATION NO. 28285
STATE OF COLORADO

PDOP = 1.5

LEGEND:

- 90° SYMBOL
- PROPOSED WELLHEAD.
- LANDING POINT.
- TARGET BOTTOM HOLE.
- SECTION CORNERS LOCATED.

NAD 83 (TARGET BOTTOM HOLE)	NAD 83 (LANDING POINT)	NAD 83 (SURFACE LOCATION)
LATITUDE = 40°23'25.37" (40.390381)	LATITUDE = 40°23'23.55" (40.389875)	LATITUDE = 40°23'26.80" (40.390778)
LONGITUDE = 104°16'57.43" (104.282619)	LONGITUDE = 104°19'03.31" (104.317586)	LONGITUDE = 104°19'04.86" (104.318017)
NAD 27 (TARGET BOTTOM HOLE)	NAD 27 (LANDING POINT)	NAD 27 (SURFACE LOCATION)
LATITUDE = 40°23'25.43" (40.390397)	LATITUDE = 40°23'23.61" (40.389892)	LATITUDE = 40°23'26.87" (40.390797)
LONGITUDE = 104°16'55.60" (104.282111)	LONGITUDE = 104°19'01.48" (104.317078)	LONGITUDE = 104°19'03.03" (104.317508)
STATE PLANE NAD 83 (COLORADO NORTH)	STATE PLANE NAD 83 (COLORADO NORTH)	STATE PLANE NAD 83 (COLORADO NORTH)
N: 1387383.64 E: 3339090.76	N: 1387067.64 E: 3329354.03	N: 1387395.41 E: 3329229.70
STATE PLANE NAD 27 (COLORADO NORTH)	STATE PLANE NAD 27 (COLORADO NORTH)	STATE PLANE NAD 27 (COLORADO NORTH)
N: 387385.32 E: 2339240.74	N: 387069.32 E: 2329503.98	N: 387397.08 E: 2329379.65



UELS, LLC
Corporate Office * 85 South 200 East
Vernal, UT 84078 * (435) 789-1017

SURVEYED BY: JARED CHRISTOPHER, D.W.	DATE: 03-19-15
DRAWN BY: J.S.	DATE DRAWN: 03-26-15
SCALE: 1" = 1000'	REVISED: 00-00-00

WELL LOCATION PLAT