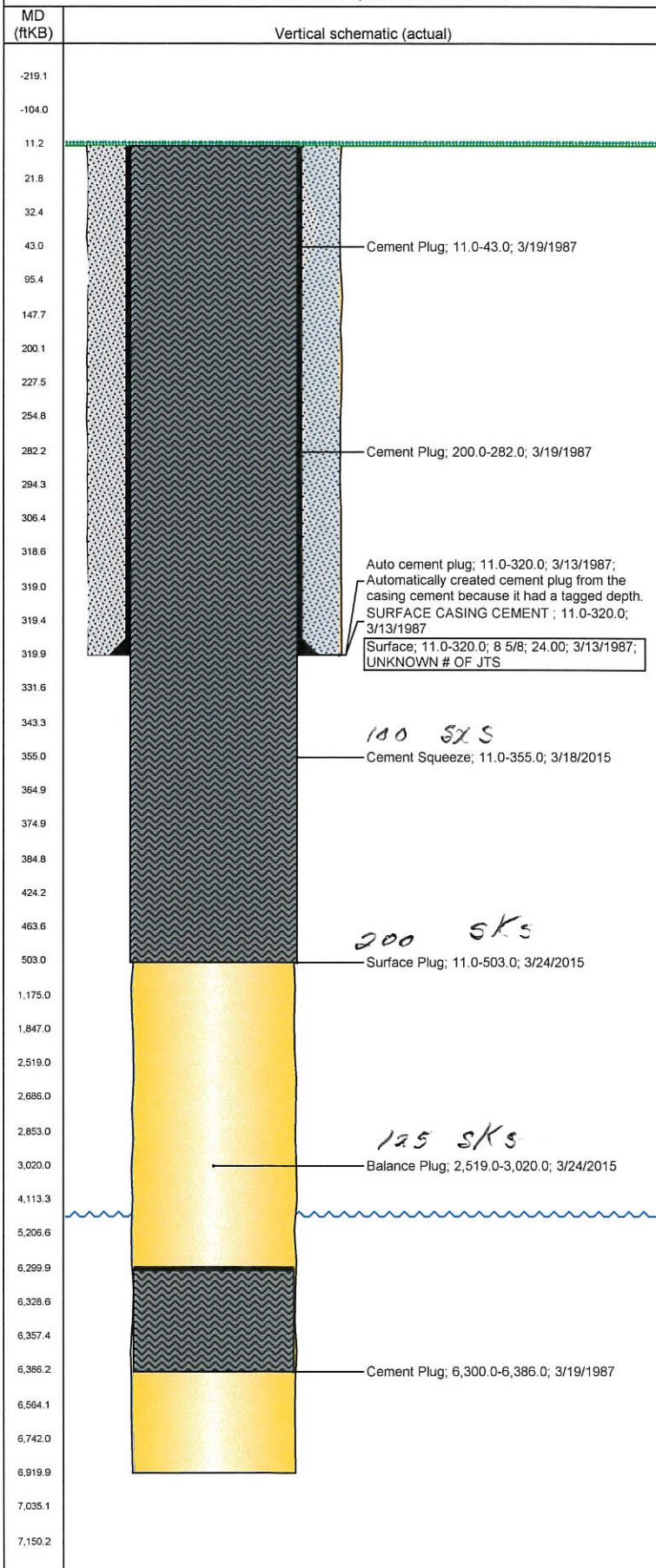


Well Name: PFEIFFER 16-26

VERTICAL - ORIGINAL HOLE, 3/24/2015 7:57:56 PM



Well Header									
API 05-123-13396		Business Unit DJ BASIN		District 15		Well Config VERTICAL			
Original KB Elevation (ft) 4,634.00		KB - GL / MSL (ftKB) 11.00		Spud Date 3/13/1987		P & A Date 3/19/1987			
Comment WELL DATA SPARSE. WBI - RE-ENTRY									
Directions To Well WCR 59 & WCR 64, WEST 0.1mi, NORTH 0.1mi INTO									
Congressional Location									
Quarter 1	Quarter 2	Quarter 3 SE	Quarter 4 SE	Section 26	Township 6 N	Twnshp N...	Range 64	Rng E/W Dir W	
Bottom Hole Location									
North-South Distance (ft)			From N or S Line		East-West Distance (ft)			From E or W Line	
Plug Back Total Depths									
Date	Depth (ftKB)		Method			Com			
3/19/1987	6,300.0		TAG						
3/25/2015	11.0		TAG						
Wellbore Sections									
Section Des			Size (in)		Act Top, MD (ftKB)		Act Btm, MD (ftKB)		
SURFACE			12 1/4		11.0		320.0		
PRODUCTION			7 7/8		320.0		6,920.0		
Zone Statuses									
Zone Name		Status Date		Status		Job			
NIOBRARA		3/25/2015		AB		HORIZONTAL WELL PREP, 3/16/2015 06:00			
Casing Strings									
Surface, 320.0ftKB									
Casing Description		Run Date		OD (in)	Wt/Len (l...	Grade	Top, MD (ft...	MD (ftKB)	
Surface		3/13/1987		8 5/8	24.00		11.0	320.0	
Cement									
Description SURFACE CASING CEMENT					Top Depth (ftKB) 11.0		Bottom Depth (ftKB) 320.0		
Description Cement Plug					Top Depth (ftKB) 6,300.0		Bottom Depth (ftKB) 6,386.0		
Description Cement Plug					Top Depth (ftKB) 200.0		Bottom Depth (ftKB) 282.0		
Description Cement Plug					Top Depth (ftKB) 11.0		Bottom Depth (ftKB) 43.0		
Description Cement Squeeze					Top Depth (ftKB) 11.0		Bottom Depth (ftKB) 355.0		
Description Balance Plug					Top Depth (ftKB) 2,519.0		Bottom Depth (ftKB) 3,020.0		
Description Surface Plug					Top Depth (ftKB) 11.0		Bottom Depth (ftKB) 503.0		
Tubing Strings									
Tubing Description		Run Date		String...	ID (in)	Wt (lb/ft)	Grade	Len (ft)	Set De...
Perforation Data									
Zone		Bnch/St g	Entered Shot Total		Top (ftKB)		Btm (ftKB)		Date
Other In Hole									
Run Date		Des			OD (in)		Top (ftKB)		Btm (ftKB)
Logs									
Date		Type				Top, MD (ftKB)		Btm, MD (ftKB)	
3/18/1987		INDUCTION				3,000.0		4,000.0	
3/18/1987		SPECTRAL DENSITY				3,400.0		6,953.0	