



## COLORADO

### Parks and Wildlife

Department of Natural Resources

Northeast Regional Office  
6060 Broadway  
Denver, CO 80216  
P 303.291.7227 | F 303.291.7114

March 16, 2015

Bill Yokley  
K P Kauffman Company Inc  
1675 Broadway, Suite 2800  
Denver, CO 80202

RE: Wildlife Comment, "Nelson-Stromquist #11-21-13H", Document No. 400571167

Dear Mr. Yokley:

Thank you for noting on your application for the above mentioned Form 2a that oil and gas facilities will be located in a sensitive wildlife habitat area. Oil and gas facilities from the Nelson-Stromquist #11-21-13H will be located in the NE4SW4 of Section 21, T2N, R68W, Weld County. A wildlife consult with Colorado Parks and Wildlife was triggered due to the close proximity of your proposed facilities and two (2) mapped bald eagle nests.

Due to recent field investigation by our local wildlife officer, Jason Deutsch, and terrestrial biologist, Mike Sherman, there is an active bald eagle nest and an active osprey nest to the northwest. The location of your proposed facilities will be beyond the recommended buffer zone for each nest (see attached map). Therefore, there is no need for a wildlife recommendation including buffer zone and seasonal timing restriction for these active nests.

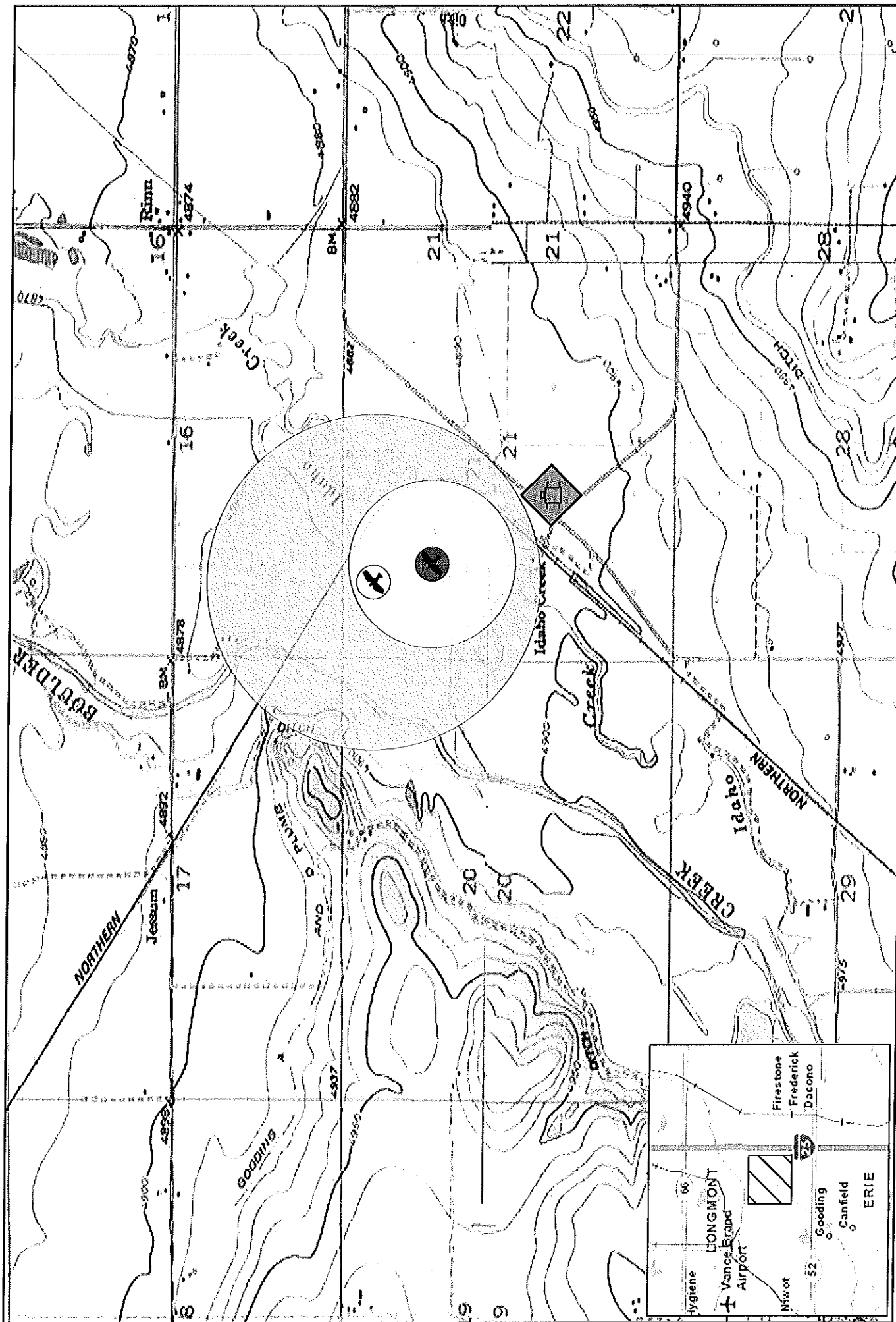
Thank you again for your attention to this matter. We appreciate K P Kauffman Company Inc's interest in protecting sensitive wildlife habitat. Please contact me at 970-472-4461 or Tom Schreiner at 303-291-7327 if you have any questions.

Sincerely,

Larry Rogstad  
Area Wildlife Manager

Cc: S. Yamashita, T. Kroening, T. Schreiner, J. Deutsch, M. Sherman, J. George  
Rebecca Trietz, COGCC ([Rebecca.treitz@state.co.us](mailto:Rebecca.treitz@state.co.us))  
Susana Lara-Mesa, K P Kauffman Company Inc ([Slaramesa@kpk.com](mailto:Slaramesa@kpk.com))

Attachment



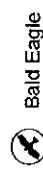
This product is produced and distributed by:  
Colorado Parks & Wildlife, GIS Section  
317 W. Prospect, Fort Collins, CO 80526.

Information depicted herein is for reference purposes only and is not intended to be used for any other purpose. Reasonable efforts have been made to ensure the accuracy of this map. Colorado Parks & Wildlife expressly disclaims responsibility for damages or liability that may arise from the use of this map.

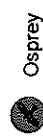
## Active CPW Raptor Nests Near Nelson-Stromquist #11-21-13H

Pub: C:\Projects\CPW\Raptors\Map\WilliamSmith\Farm-2021-13H-1.mxd

### CPW Raptor Nests



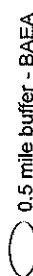
Bald Eagle



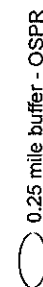
Osprey



Gas Well Location



0.5 mile buffer - BAEA



0.25 mile buffer - OSPR

Date: 3/16/2015

