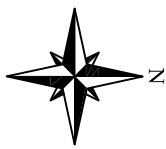
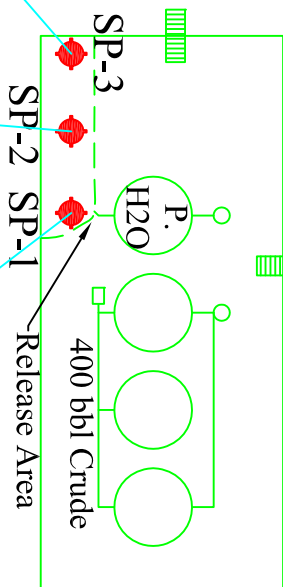


Trea



Berm



SP-3, mg/Kg  
GRO = <0.45  
DRO = <5.4  
TPH = <5.4  
B = <0.0055  
T = <0.0055  
E = <0.0055  
X = <0.005

SP-2, mg/Kg  
GRO = <0.51  
DRO = <5.1  
TPH = <5.1  
B = <0.005  
T = <0.005  
E = <0.005  
X = <0.005

SP-1, mg/Kg  
GRO = <0.48  
DRO = 7.6  
TPH = 7.6  
B = <0.0052  
T = <0.0052  
E = <0.0052  
X = <0.005

Legend	
•	Sample Location
•	COGCC Levels
	TPH = 500
	B = 0.17
	T = 85
	E = 100
	X = 175



Date: 05/11/2015

Scale: 1" = 30'

Drawn By: TJS

Wolf 35

Whiting Oil & Gas Corporation  
Weld County, Colorado

Figure 2 - Soil Concentration Map (04/23/2015)