

EXTRACTION OIL & GAS

WELD COUNTY, COLORADO (NAD 83)

NW SW SEC. 5 T2N R68W 6th P.M.

FAIRVIEW 1 - Slot FAIRVIEW 1

ORIGINAL WELLBORE

19 May, 2015

Plan: PROPOSAL #3





Project: WELD COUNTY, COLORADO (NAD 83)
Site: NW SW SEC. 5 T2N R68W 6th P.M.
Well: FAIRVIEW 1
Wellbore: ORIGINAL WELLBORE
Design: PROPOSAL #3

ANNOTATIONS

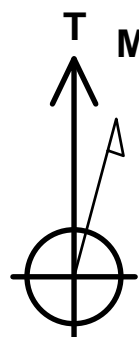
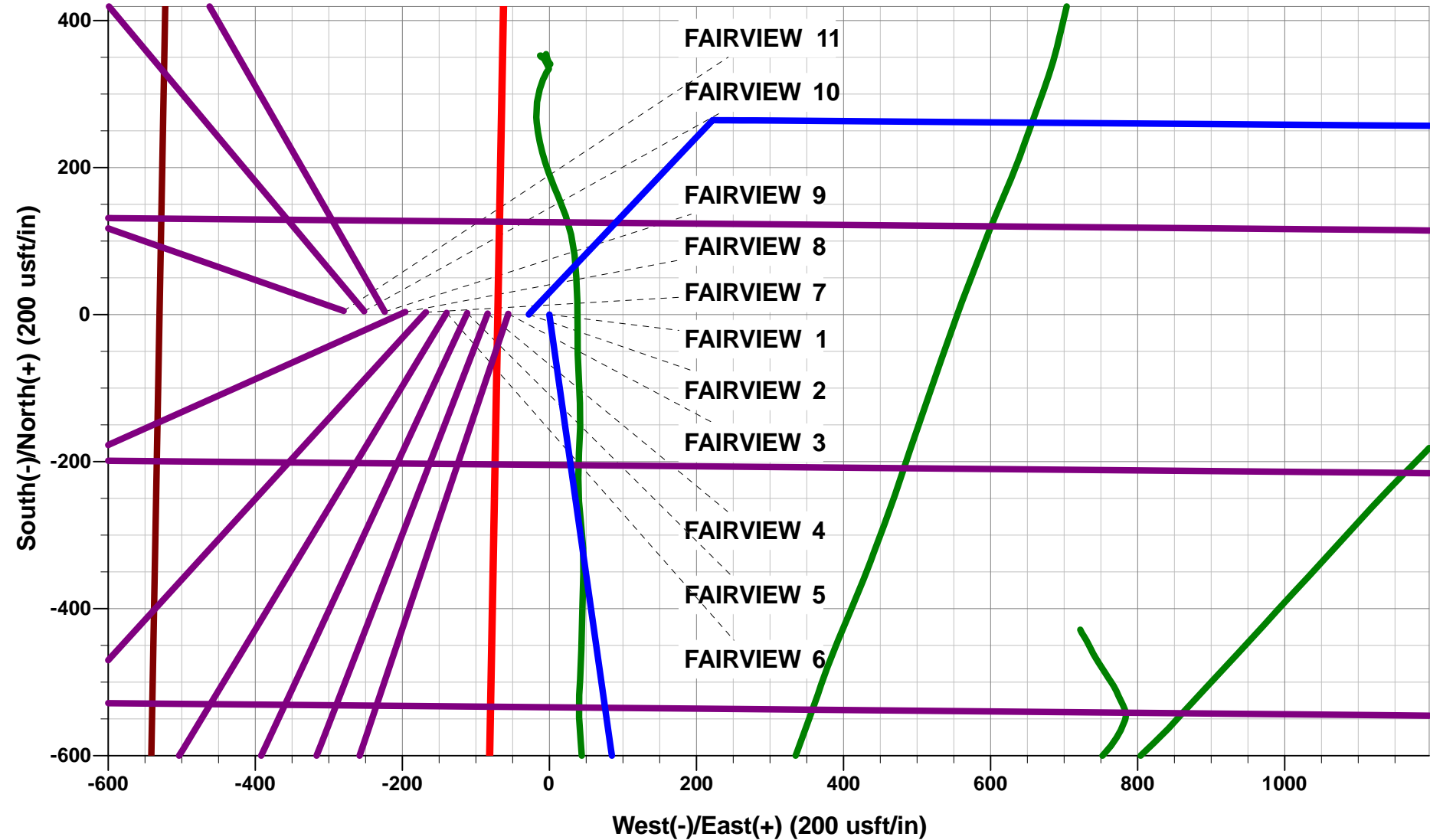
TVD	MD	Inc	Azi	+N/-S	+E/-W	VSect	Dep	Annotation
950.0	950.0	0.00	0.00	0.0	0.0	0.0	0.0	START NUDGE (2°/100ft BUR)
1629.1	1635.6	13.71	171.93	-80.8	11.5	27.2	81.6	EOB TO 13.71° INC
6567.9	6719.3	13.71	171.93	-1274.0	180.6	429.0	1286.8	END OF TANGENT
7247.0	7405.0	0.00	0.00	-1354.9	192.0	456.2	1368.4	EOD TO VERTICAL
7277.0	7435.0	0.00	0.00	-1354.9	192.0	456.2	1368.4	KOP (10°/100ft BUR)
7850.0	8335.0	90.00	90.46	-1359.5	765.0	1018.8	1941.4	7" ICP - FAIRVIEW 1 (P3)
7850.0	14555.5	90.00	90.46	-1409.6	6985.3	7126.1	8161.9	BHL - FAIRVIEW 1 (P3)

WELLBORE TARGET DETAILS (LAT/LONG)

Name	TVD	+N/-S	+E/-W	Latitude	Longitude
KOP - FAIRVIEW 1 (P3)	7277.0	-1354.9	192.0	40.162037	-105.033980
7" ICP - FAIRVIEW 1 (P3)	7850.0	-1359.5	765.0	40.162024	-105.031930
BHL - FAIRVIEW 1 (P3)	7850.0	-1409.6	6985.3	40.161884	-105.009675

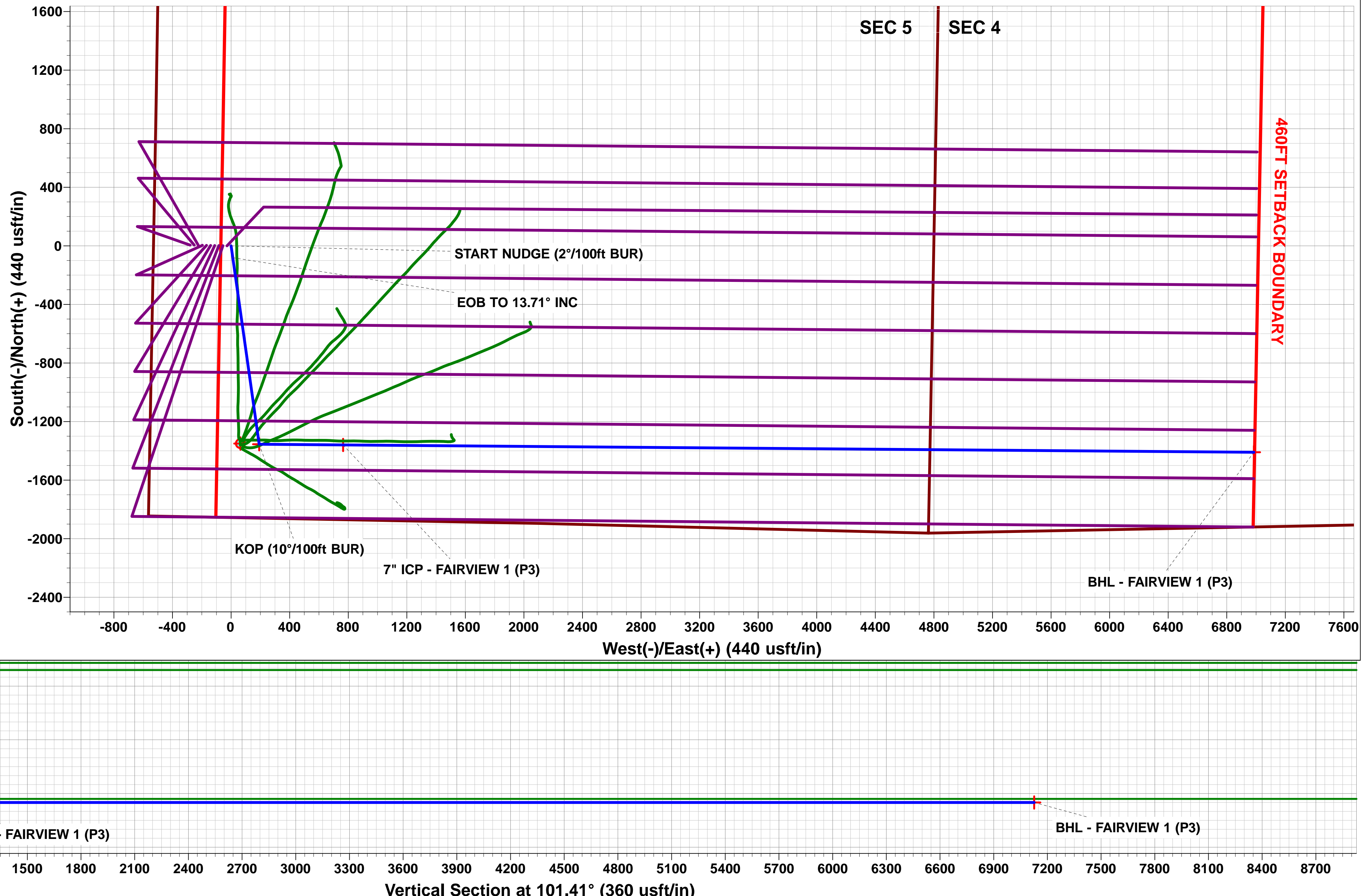
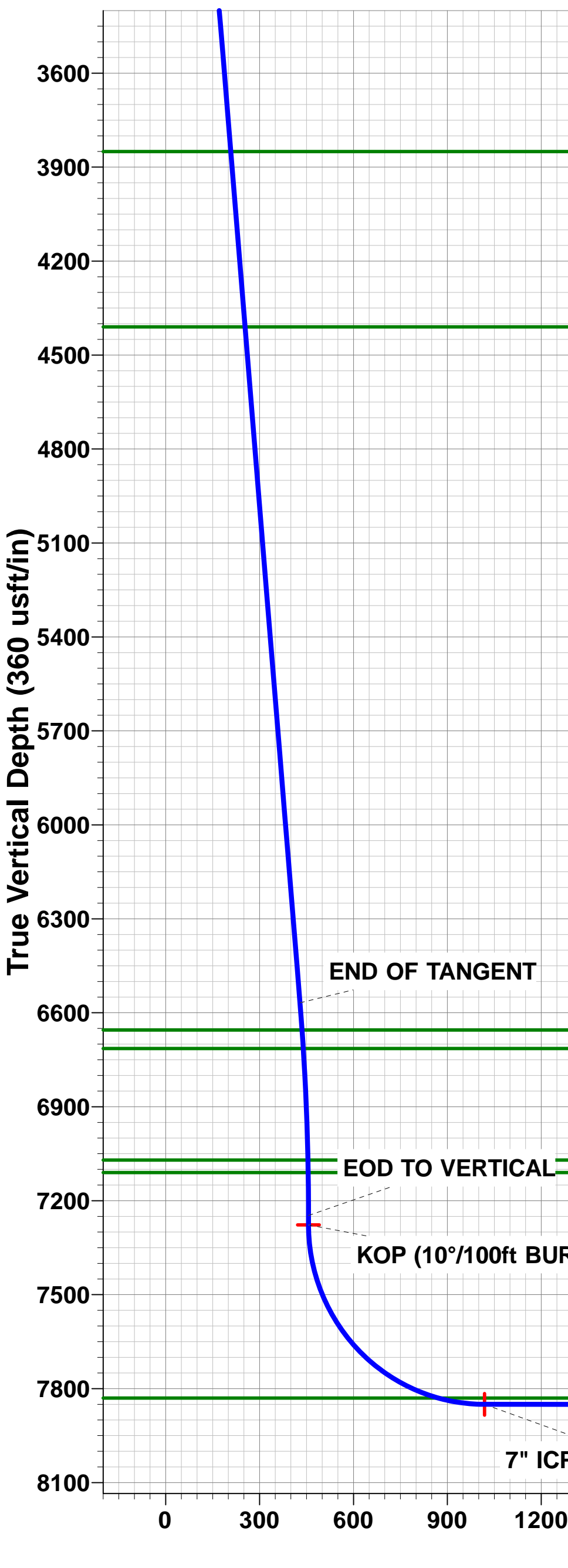
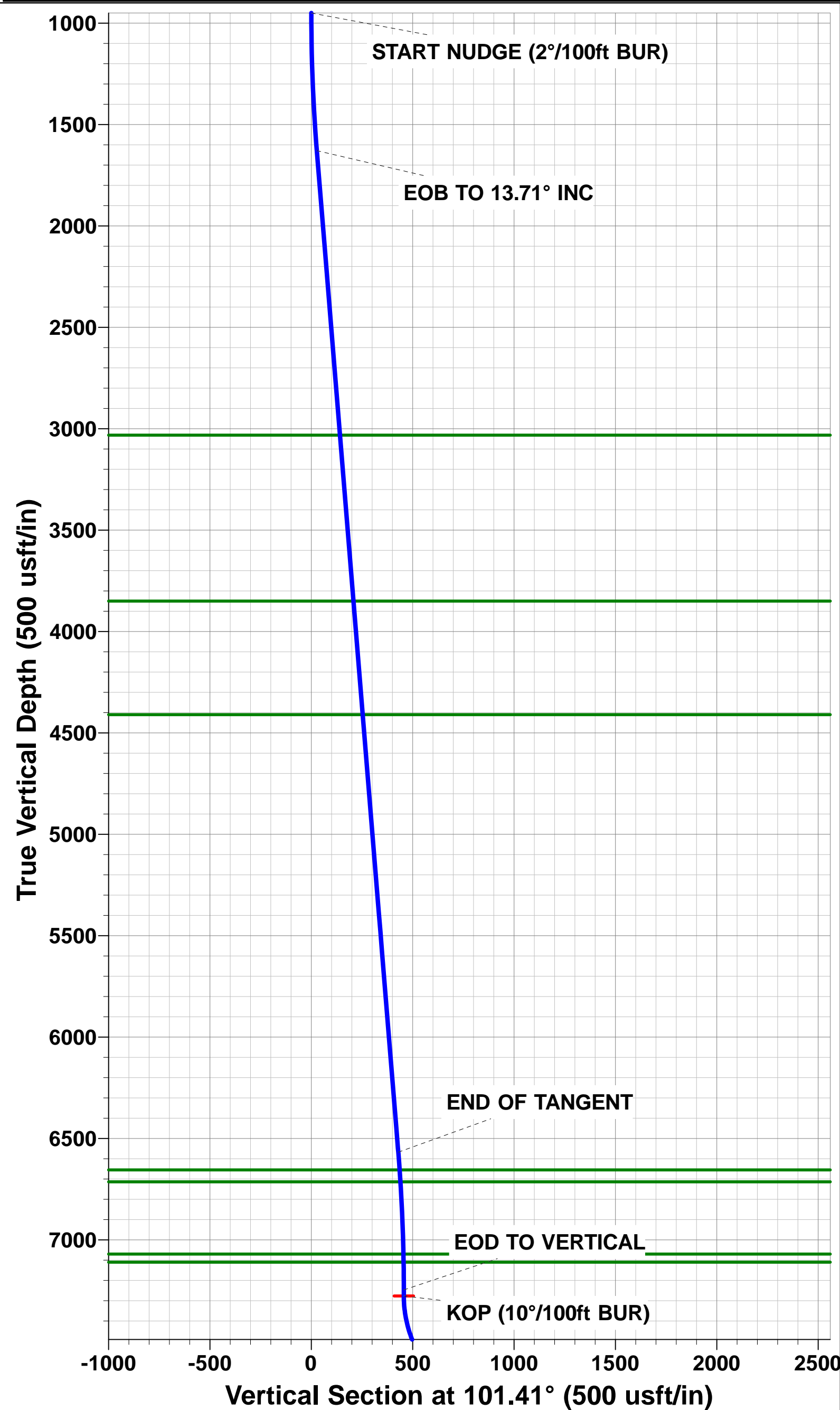
FORMATION TOP DETAILS

TVDPath	MDPath	Formation
3032.0	3079.7	PARKMAN
3850.0	3921.7	SUSSEX
4410.0	4498.1	SHANNON
6655.0	6808.7	SHARON SPRINGS
6714.0	6868.8	NIOBRARA
7070.0	7227.8	FORT HAYS
7110.0	7267.9	CODELL
7830.0	8183.2	J SAND



Azimuths to True North
Magnetic North: 8.54°

Magnetic Field
Strength: 52625.9snT
Dip Angle: 66.70°
Date: 21/10/2014
Model: IGRF2010



Planning Report



Database:	EDM 5000.1 Single User Db	Local Co-ordinate Reference:	Well FAIRVIEW 1 - Slot FAIRVIEW 1
Company:	EXTRACTION OIL & GAS	TVD Reference:	KB-EST @ 4965.0usft (Original Well Elev)
Project:	WELD COUNTY, COLORADO (NAD 83)	MD Reference:	KB-EST @ 4965.0usft (Original Well Elev)
Site:	NW SW SEC. 5 T2N R68W 6th P.M.	North Reference:	True
Well:	FAIRVIEW 1	Survey Calculation Method:	Minimum Curvature
Wellbore:	ORIGINAL WELLBORE		
Design:	PROPOSAL #3		

Project	WELD COUNTY, COLORADO (NAD 83)		
Map System:	US State Plane 1983	System Datum:	Mean Sea Level
Geo Datum:	North American Datum 1983		
Map Zone:	Colorado Northern Zone		Using geodetic scale factor

Site	NW SW SEC. 5 T2N R68W 6th P.M.		
Site Position:		Northing:	1,303,569.20 usft
From:	Lat/Long	Easting:	3,130,047.26 usft
Position Uncertainty:	0.0 usft	Slot Radius:	1.10000ft
		Latitude:	40.165756
		Longitude:	-105.034667
		Grid Convergence:	0.30 °

Well	FAIRVIEW 1 - Slot FAIRVIEW 1		
Well Position	+N/-S	0.0 usft	Northing: 1,303,569.20 usft
	+E/-W	0.0 usft	Easting: 3,130,047.26 usft
Position Uncertainty	0.0 usft	Wellhead Elevation:	usft
		Latitude:	40.165756
		Longitude:	-105.034667
		Ground Level:	4,941.0 usft

Wellbore	ORIGINAL WELLBORE				
Magnetics	Model Name	Sample Date	Declination (°)	Dip Angle (°)	Field Strength (nT)
	IGRF2010	21/10/2014	8.54	66.70	52,626

Design	PROPOSAL #3			
Audit Notes:				
Version:	Phase:	PROTOTYPE	Tie On Depth:	0.0
Vertical Section:	Depth From (TVD) (usft)	+N/-S (usft)	+E/-W (usft)	Direction (°)
	7,850.0	0.0	0.0	101.41

Plan Sections											
MD (usft)	Inc (°)	Azi (°)	Vertical Depth	SS (usft)	+N/-S (usft)	+E/-W (usft)	Dogleg Rate (°/100usft)	Build Rate (°/100usft)	Turn Rate (°/100usft)	TFO (°)	Target
0.0	0.00	0.00	0.0	-4,965.0	0.0	0.0	0.00	0.00	0.00	0.00	
950.0	0.00	0.00	950.0	-4,015.0	0.0	0.0	0.00	0.00	0.00	0.00	
1,635.6	13.71	171.93	1,629.1	-3,335.9	-80.9	11.5	2.00	2.00	0.00	171.93	
6,719.3	13.71	171.93	6,567.9	1,602.9	-1,274.0	180.6	0.00	0.00	0.00	0.00	
7,405.0	0.00	0.00	7,247.0	2,282.0	-1,354.9	192.0	2.00	-2.00	0.00	180.00	
7,435.0	0.00	0.00	7,277.0	2,312.0	-1,354.9	192.0	0.00	0.00	0.00	0.00	KOP - FAIRVIEW 1
8,335.0	90.00	90.46	7,850.0	2,885.0	-1,359.5	765.0	10.00	10.00	10.05	90.46	7" ICP - FAIRVIEW
14,555.5	90.00	90.46	7,850.0	2,885.0	-1,409.6	6,985.3	0.00	0.00	0.00	-79.00	BHL - FAIRVIEW 1

Database:	EDM 5000.1 Single User Db	Local Co-ordinate Reference:	Well FAIRVIEW 1 - Slot FAIRVIEW 1
Company:	EXTRACTION OIL & GAS	TVD Reference:	KB-EST @ 4965.0usft (Original Well Elev)
Project:	WELD COUNTY, COLORADO (NAD 83)	MD Reference:	KB-EST @ 4965.0usft (Original Well Elev)
Site:	NW SW SEC. 5 T2N R68W 6th P.M.	North Reference:	True
Well:	FAIRVIEW 1	Survey Calculation Method:	Minimum Curvature
Wellbore:	ORIGINAL WELLBORE		
Design:	PROPOSAL #3		

Planned Survey

MD (usft)	Inc (°)	Azi (°)	TVD (usft)	SS (usft)	+N/-S (usft)	+E/-W (usft)	Vertical Section (usft)	Dogleg Rate (°/100usft)	Build Rate (°/100usft)	Turn Rate (°/100usft)
0.0	0.00	0.00	0.0	4,965.00	0.0	0.0	0.0	0.00	0.00	0.00
100.0	0.00	0.00	100.0	4,865.00	0.0	0.0	0.0	0.00	0.00	0.00
200.0	0.00	0.00	200.0	4,765.00	0.0	0.0	0.0	0.00	0.00	0.00
300.0	0.00	0.00	300.0	4,665.00	0.0	0.0	0.0	0.00	0.00	0.00
400.0	0.00	0.00	400.0	4,565.00	0.0	0.0	0.0	0.00	0.00	0.00
500.0	0.00	0.00	500.0	4,465.00	0.0	0.0	0.0	0.00	0.00	0.00
600.0	0.00	0.00	600.0	4,365.00	0.0	0.0	0.0	0.00	0.00	0.00
700.0	0.00	0.00	700.0	4,265.00	0.0	0.0	0.0	0.00	0.00	0.00
800.0	0.00	0.00	800.0	4,165.00	0.0	0.0	0.0	0.00	0.00	0.00
900.0	0.00	0.00	900.0	4,065.00	0.0	0.0	0.0	0.00	0.00	0.00
START NUDGE (2°/100ft BUR)										
950.0	0.00	0.00	950.0	4,015.00	0.0	0.0	0.0	0.00	0.00	0.00
1,000.0	1.00	171.93	1,000.0	3,965.00	-0.4	0.1	0.1	2.00	2.00	0.00
1,100.0	3.00	171.93	1,099.9	3,865.07	-3.9	0.6	1.3	2.00	2.00	0.00
1,200.0	5.00	171.93	1,199.7	3,765.32	-10.8	1.5	3.6	2.00	2.00	0.00
1,300.0	7.00	171.93	1,299.1	3,665.87	-21.1	3.0	7.1	2.00	2.00	0.00
1,400.0	9.00	171.93	1,398.2	3,566.85	-34.9	4.9	11.8	2.00	2.00	0.00
1,500.0	11.00	171.93	1,496.6	3,468.37	-52.1	7.4	17.5	2.00	2.00	0.00
1,600.0	13.00	171.93	1,594.4	3,370.56	-72.7	10.3	24.5	2.00	2.00	0.00
EOB TO 13.71° INC										
1,635.6	13.71	171.93	1,629.1	3,335.93	-80.8	11.5	27.2	2.00	2.00	0.00
1,700.0	13.71	171.93	1,691.6	3,273.36	-96.0	13.6	32.3	0.00	0.00	0.00
1,800.0	13.71	171.93	1,788.8	3,176.21	-119.4	16.9	40.2	0.00	0.00	0.00
1,900.0	13.71	171.93	1,885.9	3,079.06	-142.9	20.3	48.1	0.00	0.00	0.00
2,000.0	13.71	171.93	1,983.1	2,981.91	-166.4	23.6	56.0	0.00	0.00	0.00
2,100.0	13.71	171.93	2,080.2	2,884.76	-189.8	26.9	63.9	0.00	0.00	0.00
2,200.0	13.71	171.93	2,177.4	2,787.61	-213.3	30.2	71.8	0.00	0.00	0.00
2,300.0	13.71	171.93	2,274.5	2,690.46	-236.8	33.6	79.7	0.00	0.00	0.00
2,400.0	13.71	171.93	2,371.7	2,593.31	-260.3	36.9	87.6	0.00	0.00	0.00
2,500.0	13.71	171.93	2,468.8	2,496.16	-283.7	40.2	95.5	0.00	0.00	0.00
2,600.0	13.71	171.93	2,566.0	2,399.02	-307.2	43.5	103.4	0.00	0.00	0.00
2,700.0	13.71	171.93	2,663.1	2,301.87	-330.7	46.9	111.3	0.00	0.00	0.00
2,800.0	13.71	171.93	2,760.3	2,204.72	-354.1	50.2	119.2	0.00	0.00	0.00
2,900.0	13.71	171.93	2,857.4	2,107.57	-377.6	53.5	127.2	0.00	0.00	0.00
3,000.0	13.71	171.93	2,954.6	2,010.42	-401.1	56.8	135.1	0.00	0.00	0.00
PARKMAN										
3,079.7	13.71	171.93	3,032.0	1,933.00	-419.8	59.5	141.4	0.00	0.00	0.00
3,100.0	13.71	171.93	3,051.7	1,913.27	-424.6	60.2	143.0	0.00	0.00	0.00
3,200.0	13.71	171.93	3,148.9	1,816.12	-448.0	63.5	150.9	0.00	0.00	0.00
3,300.0	13.71	171.93	3,246.0	1,718.97	-471.5	66.8	158.8	0.00	0.00	0.00
3,400.0	13.71	171.93	3,343.2	1,621.82	-495.0	70.1	166.7	0.00	0.00	0.00
3,500.0	13.71	171.93	3,440.3	1,524.67	-518.4	73.5	174.6	0.00	0.00	0.00
3,600.0	13.71	171.93	3,537.5	1,427.52	-541.9	76.8	182.5	0.00	0.00	0.00
3,700.0	13.71	171.93	3,634.6	1,330.37	-565.4	80.1	190.4	0.00	0.00	0.00
3,800.0	13.71	171.93	3,731.8	1,233.22	-588.9	83.5	198.3	0.00	0.00	0.00
3,900.0	13.71	171.93	3,828.9	1,136.07	-612.3	86.8	206.2	0.00	0.00	0.00
SUSSEX										
3,921.7	13.71	171.93	3,850.0	1,115.00	-617.4	87.5	207.9	0.00	0.00	0.00
4,000.0	13.71	171.93	3,926.1	1,038.92	-635.8	90.1	214.1	0.00	0.00	0.00
4,100.0	13.71	171.93	4,023.2	941.77	-659.3	93.4	222.0	0.00	0.00	0.00
4,200.0	13.71	171.93	4,120.4	844.62	-682.7	96.8	229.9	0.00	0.00	0.00
4,300.0	13.71	171.93	4,217.5	747.47	-706.2	100.1	237.8	0.00	0.00	0.00
4,400.0	13.71	171.93	4,314.7	650.32	-729.7	103.4	245.7	0.00	0.00	0.00
SHANNON										

Planning Report



Database:	EDM 5000.1 Single User Db	Local Co-ordinate Reference:	Well FAIRVIEW 1 - Slot FAIRVIEW 1
Company:	EXTRACTION OIL & GAS	TVD Reference:	KB-EST @ 4965.0usft (Original Well Elev)
Project:	WELD COUNTY, COLORADO (NAD 83)	MD Reference:	KB-EST @ 4965.0usft (Original Well Elev)
Site:	NW SW SEC. 5 T2N R68W 6th P.M.	North Reference:	True
Well:	FAIRVIEW 1	Survey Calculation Method:	Minimum Curvature
Wellbore:	ORIGINAL WELLBORE		
Design:	PROPOSAL #3		

Planned Survey

MD (usft)	Inc (°)	Azi (°)	TVD (usft)	SS (usft)	+N/-S (usft)	+E/-W (usft)	Vertical Section (usft)	Dogleg Rate (°/100usft)	Build Rate (°/100usft)	Turn Rate (°/100usft)
4,498.1	13.71	171.93	4,410.0	555.00	-752.7	106.7	253.5	0.00	0.00	0.00
4,500.0	13.71	171.93	4,411.8	553.17	-753.1	106.7	253.6	0.00	0.00	0.00
4,600.0	13.71	171.93	4,509.0	456.02	-776.6	110.1	261.5	0.00	0.00	0.00
4,700.0	13.71	171.93	4,606.1	358.87	-800.1	113.4	269.4	0.00	0.00	0.00
4,800.0	13.71	171.93	4,703.3	261.72	-823.6	116.7	277.3	0.00	0.00	0.00
4,900.0	13.71	171.93	4,800.4	164.58	-847.0	120.0	285.2	0.00	0.00	0.00
5,000.0	13.71	171.93	4,897.6	67.43	-870.5	123.4	293.1	0.00	0.00	0.00
5,100.0	13.71	171.93	4,994.7	-29.72	-894.0	126.7	301.0	0.00	0.00	0.00
5,200.0	13.71	171.93	5,091.9	-126.87	-917.4	130.0	308.9	0.00	0.00	0.00
5,300.0	13.71	171.93	5,189.0	-224.02	-940.9	133.3	316.8	0.00	0.00	0.00
5,400.0	13.71	171.93	5,286.2	-321.17	-964.4	136.7	324.7	0.00	0.00	0.00
5,500.0	13.71	171.93	5,383.3	-418.32	-987.9	140.0	332.6	0.00	0.00	0.00
5,600.0	13.71	171.93	5,480.5	-515.47	-1,011.3	143.3	340.5	0.00	0.00	0.00
5,700.0	13.71	171.93	5,577.6	-612.62	-1,034.8	146.7	348.4	0.00	0.00	0.00
5,800.0	13.71	171.93	5,674.8	-709.77	-1,058.3	150.0	356.3	0.00	0.00	0.00
5,900.0	13.71	171.93	5,771.9	-806.92	-1,081.7	153.3	364.3	0.00	0.00	0.00
6,000.0	13.71	171.93	5,869.1	-904.07	-1,105.2	156.6	372.2	0.00	0.00	0.00
6,100.0	13.71	171.93	5,966.2	-1,001.22	-1,128.7	160.0	380.1	0.00	0.00	0.00
6,200.0	13.71	171.93	6,063.4	-1,098.37	-1,152.2	163.3	388.0	0.00	0.00	0.00
6,300.0	13.71	171.93	6,160.5	-1,195.52	-1,175.6	166.6	395.9	0.00	0.00	0.00
6,400.0	13.71	171.93	6,257.7	-1,292.67	-1,199.1	169.9	403.8	0.00	0.00	0.00
6,500.0	13.71	171.93	6,354.8	-1,389.82	-1,222.6	173.3	411.7	0.00	0.00	0.00
6,600.0	13.71	171.93	6,452.0	-1,486.97	-1,246.0	176.6	419.6	0.00	0.00	0.00
6,700.0	13.71	171.93	6,549.1	-1,584.12	-1,269.5	179.9	427.5	0.00	0.00	0.00
END OF TANGENT										
6,719.3	13.71	171.93	6,567.9	-1,602.87	-1,274.0	180.6	429.0	0.00	0.00	0.00
6,800.0	12.10	171.93	6,646.5	-1,681.53	-1,291.9	183.1	435.0	2.00	-2.00	0.00
SHARON SPRINGS										
6,808.7	11.93	171.93	6,655.0	-1,690.00	-1,293.7	183.3	435.6	2.00	-2.00	0.00
NIOBRARA										
6,868.8	10.72	171.93	6,714.0	-1,749.00	-1,305.4	185.0	439.6	2.00	-2.00	0.00
6,900.0	10.10	171.93	6,744.6	-1,779.65	-1,311.0	185.8	441.4	2.00	-2.00	0.00
7,000.0	8.10	171.93	6,843.4	-1,878.39	-1,326.6	188.0	446.7	2.00	-2.00	0.00
7,100.0	6.10	171.93	6,942.6	-1,977.61	-1,338.8	189.7	450.8	2.00	-2.00	0.00
7,200.0	4.10	171.93	7,042.2	-2,077.21	-1,347.6	191.0	453.8	2.00	-2.00	0.00
FORT HAYS										
7,227.8	3.54	171.93	7,070.0	-2,105.00	-1,349.5	191.2	454.4	2.00	-2.00	0.00
CODELL										
7,267.9	2.74	171.93	7,110.0	-2,145.00	-1,351.7	191.6	455.1	2.00	-2.00	0.00
7,300.0	2.10	171.93	7,142.1	-2,177.06	-1,353.0	191.7	455.6	2.00	-2.00	0.00
7,400.0	0.10	171.93	7,242.0	-2,277.04	-1,354.9	192.0	456.2	2.00	-2.00	0.00
EOD TO VERTICAL										
7,405.0	0.00	0.00	7,247.0	-2,282.04	-1,354.9	192.0	456.2	1.98	-1.98	0.00
KOP (10°/100ft BUR)										
7,435.0	0.00	0.00	7,277.0	-2,312.04	-1,354.9	192.0	456.2	0.00	0.00	0.00
7,500.0	6.50	90.46	7,341.9	-2,376.90	-1,354.9	195.7	459.8	10.01	10.01	0.00
7,600.0	16.50	90.46	7,439.8	-2,474.77	-1,355.1	215.6	479.4	10.00	10.00	0.00
7,700.0	26.50	90.46	7,532.7	-2,567.69	-1,355.4	252.2	515.3	10.00	10.00	0.00
7,800.0	36.50	90.46	7,617.8	-2,652.84	-1,355.8	304.4	566.6	10.00	10.00	0.00
7,900.0	46.50	90.46	7,692.6	-2,727.64	-1,356.3	370.6	631.6	10.00	10.00	0.00
8,000.0	56.50	90.46	7,754.8	-2,789.82	-1,357.0	448.7	708.3	10.00	10.00	0.00
8,100.0	66.50	90.46	7,802.5	-2,837.47	-1,357.7	536.5	794.5	10.00	10.00	0.00
J SAND										

Database:	EDM 5000.1 Single User Db	Local Co-ordinate Reference:	Well FAIRVIEW 1 - Slot FAIRVIEW 1
Company:	EXTRACTION OIL & GAS	TVD Reference:	KB-EST @ 4965.0usft (Original Well Elev)
Project:	WELD COUNTY, COLORADO (NAD 83)	MD Reference:	KB-EST @ 4965.0usft (Original Well Elev)
Site:	NW SW SEC. 5 T2N R68W 6th P.M.	North Reference:	True
Well:	FAIRVIEW 1	Survey Calculation Method:	Minimum Curvature
Wellbore:	ORIGINAL WELLBORE		
Design:	PROPOSAL #3		

Planned Survey

MD (usft)	Inc (°)	Azi (°)	TVD (usft)	SS (usft)	+N/-S (usft)	+E/-W (usft)	Vertical Section (usft)	Dogleg Rate (°/100usft)	Build Rate (°/100usft)	Turn Rate (°/100usft)
8,183.2	74.82	90.46	7,830.0	-2,865.00	-1,358.3	614.9	871.5	10.00	10.00	0.00
8,200.0	76.50	90.46	7,834.2	-2,869.16	-1,358.5	631.2	887.5	10.00	10.00	0.00
8,300.0	86.50	90.46	7,848.9	-2,883.93	-1,359.3	730.0	984.4	10.00	10.00	0.00
7" ICP - FAIRVIEW 1 (P3)										
8,335.0	90.00	90.46	7,850.0	-2,885.00	-1,359.5	765.0	1,018.8	10.00	10.00	0.00
8,400.0	90.00	90.46	7,850.0	-2,885.00	-1,360.1	830.0	1,082.6	0.00	0.00	0.00
8,500.0	90.00	90.46	7,850.0	-2,885.00	-1,360.9	930.0	1,180.8	0.00	0.00	0.00
8,600.0	90.00	90.46	7,850.0	-2,885.00	-1,361.7	1,030.0	1,279.0	0.00	0.00	0.00
8,700.0	90.00	90.46	7,850.0	-2,885.00	-1,362.5	1,130.0	1,377.1	0.00	0.00	0.00
8,800.0	90.00	90.46	7,850.0	-2,885.01	-1,363.3	1,230.0	1,475.3	0.00	0.00	0.00
8,900.0	90.00	90.46	7,850.0	-2,885.01	-1,364.1	1,330.0	1,573.5	0.00	0.00	0.00
9,000.0	90.00	90.46	7,850.0	-2,885.01	-1,364.9	1,429.9	1,671.7	0.00	0.00	0.00
9,100.0	90.00	90.46	7,850.0	-2,885.01	-1,365.7	1,529.9	1,769.9	0.00	0.00	0.00
9,200.0	90.00	90.46	7,850.0	-2,885.01	-1,366.5	1,629.9	1,868.0	0.00	0.00	0.00
9,300.0	90.00	90.46	7,850.0	-2,885.01	-1,367.4	1,729.9	1,966.2	0.00	0.00	0.00
9,400.0	90.00	90.46	7,850.0	-2,885.01	-1,368.2	1,829.9	2,064.4	0.00	0.00	0.00
9,500.0	90.00	90.46	7,850.0	-2,885.01	-1,369.0	1,929.9	2,162.6	0.00	0.00	0.00
9,600.0	90.00	90.46	7,850.0	-2,885.01	-1,369.8	2,029.9	2,260.8	0.00	0.00	0.00
9,700.0	90.00	90.46	7,850.0	-2,885.01	-1,370.6	2,129.9	2,358.9	0.00	0.00	0.00
9,800.0	90.00	90.46	7,850.0	-2,885.01	-1,371.4	2,229.9	2,457.1	0.00	0.00	0.00
9,900.0	90.00	90.46	7,850.0	-2,885.01	-1,372.2	2,329.9	2,555.3	0.00	0.00	0.00
10,000.0	90.00	90.46	7,850.0	-2,885.01	-1,373.0	2,429.9	2,653.5	0.00	0.00	0.00
10,100.0	90.00	90.46	7,850.0	-2,885.01	-1,373.8	2,529.9	2,751.7	0.00	0.00	0.00
10,200.0	90.00	90.46	7,850.0	-2,885.02	-1,374.6	2,629.9	2,849.9	0.00	0.00	0.00
10,300.0	90.00	90.46	7,850.0	-2,885.02	-1,375.4	2,729.9	2,948.0	0.00	0.00	0.00
10,400.0	90.00	90.46	7,850.0	-2,885.02	-1,376.2	2,829.9	3,046.2	0.00	0.00	0.00
10,500.0	90.00	90.46	7,850.0	-2,885.02	-1,377.0	2,929.9	3,144.4	0.00	0.00	0.00
10,600.0	90.00	90.46	7,850.0	-2,885.02	-1,377.8	3,029.9	3,242.6	0.00	0.00	0.00
10,700.0	90.00	90.46	7,850.0	-2,885.02	-1,378.7	3,129.9	3,340.8	0.00	0.00	0.00
10,800.0	90.00	90.46	7,850.0	-2,885.02	-1,379.5	3,229.9	3,438.9	0.00	0.00	0.00
10,900.0	90.00	90.46	7,850.0	-2,885.02	-1,380.3	3,329.9	3,537.1	0.00	0.00	0.00
11,000.0	90.00	90.46	7,850.0	-2,885.02	-1,381.1	3,429.9	3,635.3	0.00	0.00	0.00
11,100.0	90.00	90.46	7,850.0	-2,885.02	-1,381.9	3,529.9	3,733.5	0.00	0.00	0.00
11,200.0	90.00	90.46	7,850.0	-2,885.02	-1,382.7	3,629.9	3,831.7	0.00	0.00	0.00
11,300.0	90.00	90.46	7,850.0	-2,885.02	-1,383.5	3,729.9	3,929.8	0.00	0.00	0.00
11,400.0	90.00	90.46	7,850.0	-2,885.02	-1,384.3	3,829.9	4,028.0	0.00	0.00	0.00
11,500.0	90.00	90.46	7,850.0	-2,885.02	-1,385.1	3,929.9	4,126.2	0.00	0.00	0.00
11,600.0	90.00	90.46	7,850.0	-2,885.02	-1,385.9	4,029.9	4,224.4	0.00	0.00	0.00
11,700.0	90.00	90.46	7,850.0	-2,885.02	-1,386.7	4,129.9	4,322.6	0.00	0.00	0.00
11,800.0	90.00	90.46	7,850.0	-2,885.02	-1,387.5	4,229.9	4,420.7	0.00	0.00	0.00
11,900.0	90.00	90.46	7,850.0	-2,885.02	-1,388.3	4,329.9	4,518.9	0.00	0.00	0.00
12,000.0	90.00	90.46	7,850.0	-2,885.02	-1,389.1	4,429.9	4,617.1	0.00	0.00	0.00
12,100.0	90.00	90.46	7,850.0	-2,885.02	-1,389.9	4,529.8	4,715.3	0.00	0.00	0.00
12,200.0	90.00	90.46	7,850.0	-2,885.02	-1,390.7	4,629.8	4,813.5	0.00	0.00	0.00
12,300.0	90.00	90.46	7,850.0	-2,885.02	-1,391.5	4,729.8	4,911.6	0.00	0.00	0.00
12,400.0	90.00	90.46	7,850.0	-2,885.02	-1,392.3	4,829.8	5,009.8	0.00	0.00	0.00
12,500.0	90.00	90.46	7,850.0	-2,885.02	-1,393.1	4,929.8	5,108.0	0.00	0.00	0.00
12,600.0	90.00	90.46	7,850.0	-2,885.02	-1,393.9	5,029.8	5,206.2	0.00	0.00	0.00
12,700.0	90.00	90.46	7,850.0	-2,885.02	-1,394.7	5,129.8	5,304.4	0.00	0.00	0.00
12,800.0	90.00	90.46	7,850.0	-2,885.01	-1,395.5	5,229.8	5,402.5	0.00	0.00	0.00
12,900.0	90.00	90.46	7,850.0	-2,885.01	-1,396.3	5,329.8	5,500.7	0.00	0.00	0.00
13,000.0	90.00	90.46	7,850.0	-2,885.01	-1,397.1	5,429.8	5,598.9	0.00	0.00	0.00
13,100.0	90.00	90.46	7,850.0	-2,885.01	-1,397.9	5,529.8	5,697.1	0.00	0.00	0.00

Database:	EDM 5000.1 Single User Db	Local Co-ordinate Reference:	Well FAIRVIEW 1 - Slot FAIRVIEW 1
Company:	EXTRACTION OIL & GAS	TVD Reference:	KB-EST @ 4965.0usft (Original Well Elev)
Project:	WELD COUNTY, COLORADO (NAD 83)	MD Reference:	KB-EST @ 4965.0usft (Original Well Elev)
Site:	NW SW SEC. 5 T2N R68W 6th P.M.	North Reference:	True
Well:	FAIRVIEW 1	Survey Calculation Method:	Minimum Curvature
Wellbore:	ORIGINAL WELLBORE		
Design:	PROPOSAL #3		

Planned Survey

MD (usft)	Inc (°)	Azi (°)	TVD (usft)	SS (usft)	+N/-S (usft)	+E/-W (usft)	Vertical Section (usft)	Dogleg Rate (°/100usft)	Build Rate (°/100usft)	Turn Rate (°/100usft)
13,200.0	90.00	90.46	7,850.0	-2,885.01	-1,398.7	5,629.8	5,795.3	0.00	0.00	0.00
13,300.0	90.00	90.46	7,850.0	-2,885.01	-1,399.5	5,729.8	5,893.4	0.00	0.00	0.00
13,400.0	90.00	90.46	7,850.0	-2,885.01	-1,400.3	5,829.8	5,991.6	0.00	0.00	0.00
13,500.0	90.00	90.46	7,850.0	-2,885.01	-1,401.1	5,929.8	6,089.8	0.00	0.00	0.00
13,600.0	90.00	90.46	7,850.0	-2,885.01	-1,401.9	6,029.8	6,188.0	0.00	0.00	0.00
13,700.0	90.00	90.46	7,850.0	-2,885.01	-1,402.7	6,129.8	6,286.1	0.00	0.00	0.00
13,800.0	90.00	90.46	7,850.0	-2,885.01	-1,403.5	6,229.8	6,384.3	0.00	0.00	0.00
13,900.0	90.00	90.46	7,850.0	-2,885.01	-1,404.3	6,329.8	6,482.5	0.00	0.00	0.00
14,000.0	90.00	90.46	7,850.0	-2,885.01	-1,405.1	6,429.8	6,580.7	0.00	0.00	0.00
14,100.0	90.00	90.46	7,850.0	-2,885.00	-1,405.9	6,529.8	6,678.9	0.00	0.00	0.00
14,200.0	90.00	90.46	7,850.0	-2,885.00	-1,406.7	6,629.8	6,777.0	0.00	0.00	0.00
14,300.0	90.00	90.46	7,850.0	-2,885.00	-1,407.5	6,729.8	6,875.2	0.00	0.00	0.00
14,400.0	90.00	90.46	7,850.0	-2,885.00	-1,408.3	6,829.8	6,973.4	0.00	0.00	0.00
14,500.0	90.00	90.46	7,850.0	-2,885.00	-1,409.1	6,929.8	7,071.6	0.00	0.00	0.00
BHL - FAIRVIEW 1 (P3)										
14,555.5	90.00	90.46	7,850.0	-2,885.00	-1,409.6	6,985.3	7,126.1	0.00	0.00	0.00

Formations

MD (usft)	TVD (usft)	Name	Lithology	Dip (°)	Dip Direction (°)
3,079.7	3,032.0	PARKMAN		0.00	
3,921.7	3,850.0	SUSSEX		0.00	
4,498.1	4,410.0	SHANNON		0.00	
6,808.7	6,655.0	SHARON SPRINGS		0.00	
6,868.8	6,714.0	NIOBRARA		0.00	
7,227.8	7,070.0	FORT HAYS		0.00	
7,267.9	7,110.0	CODELL		0.00	
8,183.2	7,830.0	J SAND		0.00	

Plan Annotations

MD (usft)	TVD (usft)	Local Coordinates		Comment
		+N/-S (usft)	+E/-W (usft)	
950.0	950.0	0.0	0.0	START NUDGE (2°/100ft BUR)
1,635.6	1,629.1	-80.8	11.5	EOB TO 13.71° INC
6,719.3	6,567.9	-1,274.0	180.6	END OF TANGENT
7,405.0	7,247.0	-1,354.9	192.0	EOD TO VERTICAL
7,435.0	7,277.0	-1,354.9	192.0	KOP (10°/100ft BUR)
8,335.0	7,850.0	-1,359.5	765.0	7" ICP - FAIRVIEW 1 (P3)
14,555.5	7,850.0	-1,409.6	6,985.3	BHL - FAIRVIEW 1 (P3)