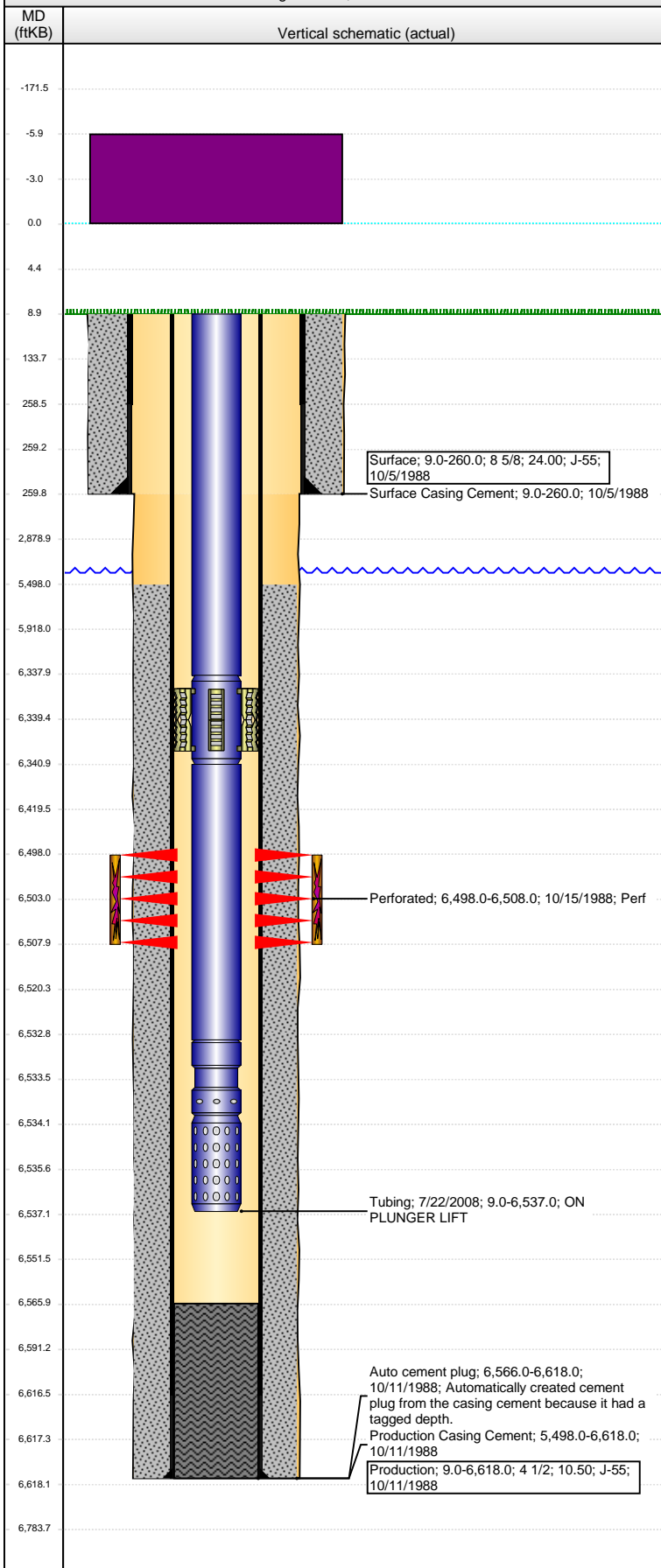


Well Name: LILLI UNIT 6-6

VERTICAL - Original Hole, 5/26/2015 3:01:21 PM



Well Header

API	Business Unit	District	Well Config
05-123-14022	DJ BASIN	25	VERTICAL
Original KB Elevation (ft)	KB - GL / MSL (ftKB)	Spud Date	P & A Date
4,808.00	9.00	10/5/1988	

Comment

Directions To Well

Congressional Location

Quarter 1	Quarter 2	Quarter 3	Quarter 4	Section	Township	Twnshp N...	Range	Rng E/W Dir
	NW	NE	SW	6	8	N	58	W

Bottom Hole Location

North-South Distance (ft)	From N or S Line	East-West Distance (ft)	From E or W Line

Plug Back Total Depths

Date	Depth (ftKB)	Method	Com

Wellbore Sections

Section Des	Size (in)	Act Top, MD (ftKB)	Act Btm, MD (ftKB)
SURFACE	12 1/4	9.0	260.0
PRODUCTION	7 7/8	260.0	6,618.0

Zone Statuses

Zone Name	Status Date	Status	Fluid Type	Job	Prod Method

Casing Strings

Surface, 260.0ftKB

Casing Description	Run Date	OD (in)	Wt/Len (l...	Grade	Top, MD (ft...	MD (ftKB)
Surface	10/5/1988	8 5/8	24.00	J-55	9.0	260.0

Production, 6,618.0ftKB

Casing Description	Run Date	OD (in)	Wt/Len (l...	Grade	Top, MD (ft...	MD (ftKB)
Production	10/11/1988	4 1/2	10.50	J-55	9.0	6,618.0

Cement

Description	Top Depth (ftKB)	Bottom Depth (ftKB)
Surface Casing Cement	9.0	260.0
Description	Top Depth (ftKB)	Bottom Depth (ftKB)
Production Casing Cement	5,498.0	6,618.0

Tubing Strings

Tubing Description	Run Date	String...	ID (in)	Wt (lb/ft)	Grade	Len (ft)	Set De...
Tubing	7/22/2008	2 3/8				6,528.00	

Tubing Components

Item Des	OD (in)	Wt (lb/ft)	Grade	Jts	Len (ft)	Btm (ftKB)	Btm (TVD) (ftKB)
Tubing	2 3/8				6,328.90	6,337.9	
TAC	2 3/8				3.00	6,340.9	
Tubing	2 3/8			6	192.00	6,532.9	
SN	2 3/8				1.10	6,534.0	
Perf Nipple	2 3/8				3.00	6,537.0	

Perforation Data

Zone	Bnch/St g	Entered Shot Total	Top (ftKB)	Btm (ftKB)	Date
D SAND, Original Hole		41	6,498.00	6,508.00	10/15/1988

Stimulations & Treatments

Date	Zone	Primary Job Type
10/19/1988	D SAND, Original Hole	DRILLING/COMPLETION - ORIGINAL
Technical Result	Tech Result Details	Tech Result Note
Comment		

Other In Hole

Run Date	Des	OD (in)	Top (ftKB)	Btm (ftKB)

Logs

Date	Type	Top, MD (ftKB)	Btm, MD (ftKB)