

UPRR 62 PAN AM K #1

Existing Features	
KB	10
TOC (CBL)	115
Surface csg shoe at	254

DV Tool	755
BOC (CBL)	770

Bottom of Foxhills (FHM)	1240
--------------------------	------

Sussex Top	4230
Producing Sussex w/in 1 mile	

Sussex Base	4524
-------------	------

Shannon Base	NP
Not producing Shannon w/in 1 mile	

Top of Cement Plug	6071
TOC (CBL)	6074

Squeeze perfs	6580
TOC (CBL)	6590
Bottom of cement plug	6670
Niobrara Top	6841

Codell	7300
--------	------

CIBP w/ 2 sx CMT cap	7522
J Sand	7570
Perf Top	7580
Perf Bottom	7628
PBMD	7670
4 1/2" 11.6# CSG	7705

P&A as Executed	
80	CIBP 8 5/8" 24#
100	Cut casing
150	TOC

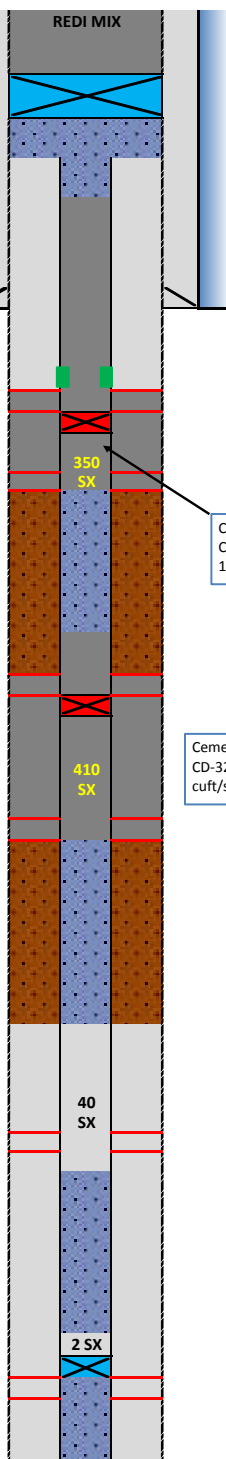
820	Squeeze perf
850	CICR

1340	Squeeze perf
------	--------------

3872	TOC
------	-----

4030	TOC
4060	CICR

4630	Squeeze perfs
------	---------------



Cement Blend: Type III w/cello flake and CaCl₂ as necessary, mixed at 14.8 ppg and 1.33 cuft/sk.

Cement Blend: "G" w/0.25 pps cello flake, 0.4% CD-32, 0.4% ASA-301, mixed at 15.8 ppg and 1.15 cuft/sk.

API#	05-123-09185			
Wins:	75243			
Equipment	Specs.	Depth	Capacity (bbl/ft)	Capacity (ft ³ /ft)
Surface Casing	8 5/8" (24#)	254	0.0637	0.3576
Production Casing	4 1/2" (11.6#)	7705	0.01555	0.0873
Tubing Size	2 3/8" (4.7#)	N/A	N/A	N/A
Hole Size (TOP)	11	N/A	0.1175	0.6600
Annulus (TOP)	11	N/A	0.0979	0.5495
Annulus (SU/SH)	11	N/A	0.0979	0.5495
Annulus (NB)	N/A	N/A	N/A	N/A

Legend	
	Existing cement with CBL
	New cement
	Assumed cement w/ no CBL
	Cast Iron Cement Retainer
	Cast Iron Bridge Plug
	Mud
	Water + Biocide
	DV Tool