



DDC  
DDC  
3222 North 6 Mile Road  
Casper, WY 82604

**RM-141069**

5":100' - MD  
10/26/2014 10:55:24 AM

**Oper. Company:** Noble Energy Inc.  
**Country:** USA  
**State / Province:** CO  
**County / Parish:** WELD  
**Started:** 10/24/2014 12:30 PM

**API/UWI:** 05-123-39695  
**Field:** Wattenberg  
**Well:** Mecklenburg State LD01-72-1AHN  
**Rig:** H&P 326  
**Ended:** 10/26/2014 10:00 AM

### Personnel

**Day Hand:** Bob Kubistek  
**Night Hand:** Chris Abbott  
**Comp. Emp:** Bob Kubistek

### Location

**Latitude:** 40° 46' 27.372 N  
**Longitude:** 103° 48' 23.868 W  
**Elev. GL:** 4652'  
**Elev. DF:** 30'  
**Elev. KB:** 4682'

### Hole Data

Size	From	To
13 3/4	0	1246
8 3/4	1246	6025

### Casing Data

Size	From	To
9 5/8	0	1236
7	0	6025

### Bit Sizes

Size	From	To
13 3/4	0	1246
8 3/4	1246	6025

### Mud Data

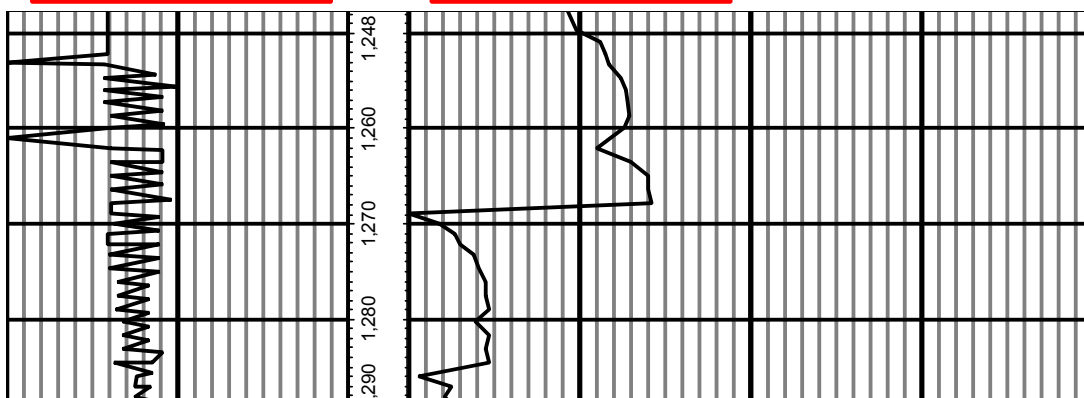
Type	Weight	Density	Viscosity	Rm	Rmf	Rmc	From	To
LSND	10.55	9.5 @ 94	50 @ 94				0	2065

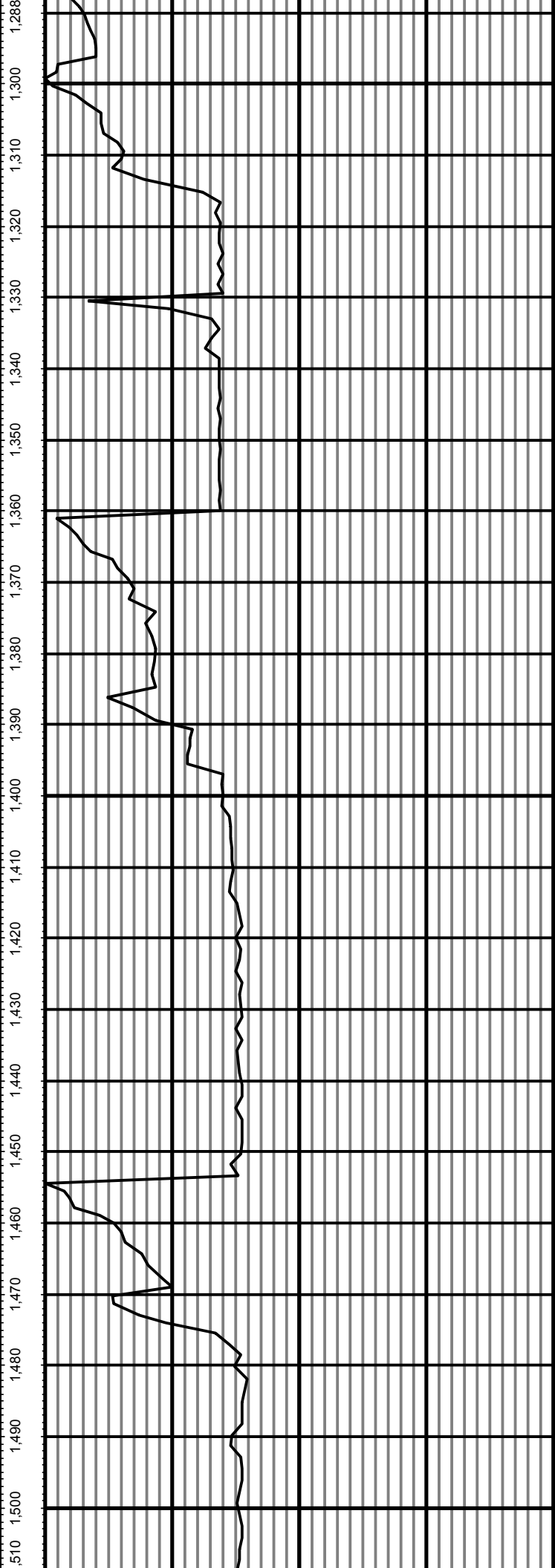
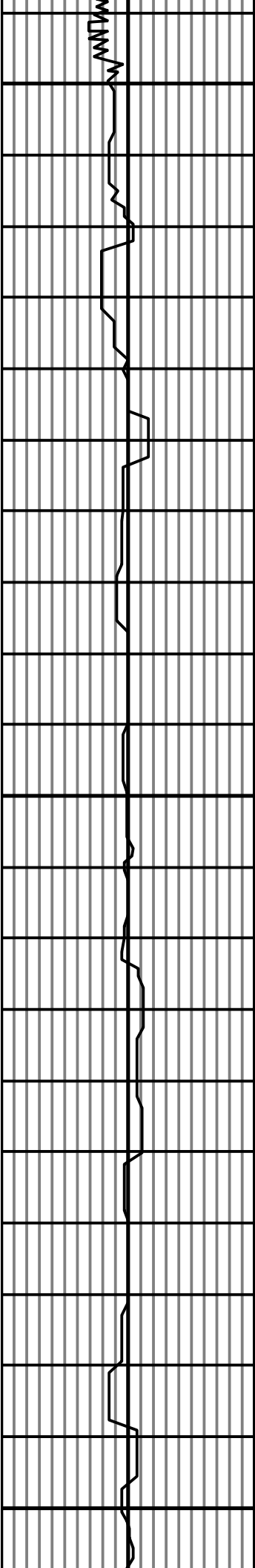
### Tool Run Data

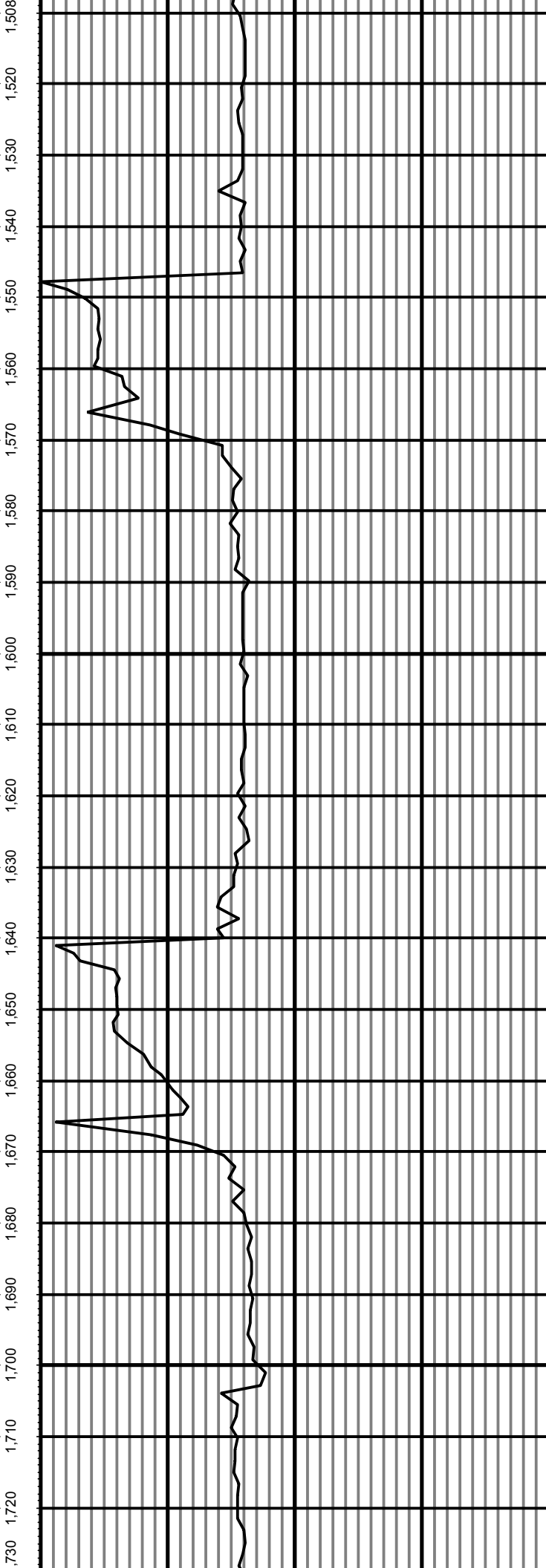
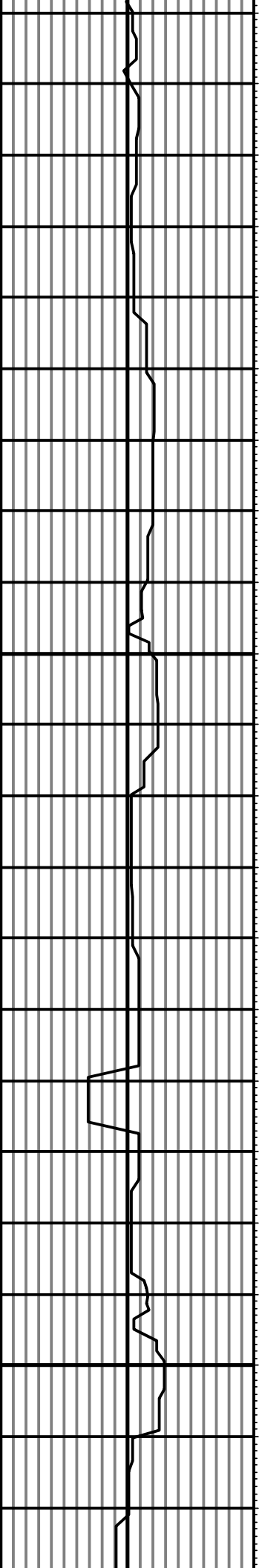
Serial Number	Gamma Offset	Resist. Offset	Start Time	Start Depth	End Time	End Depth
321	45	0	10/24/2014 12:30:47 PM	1247	10/26/2014 10:00:47 AM	6025

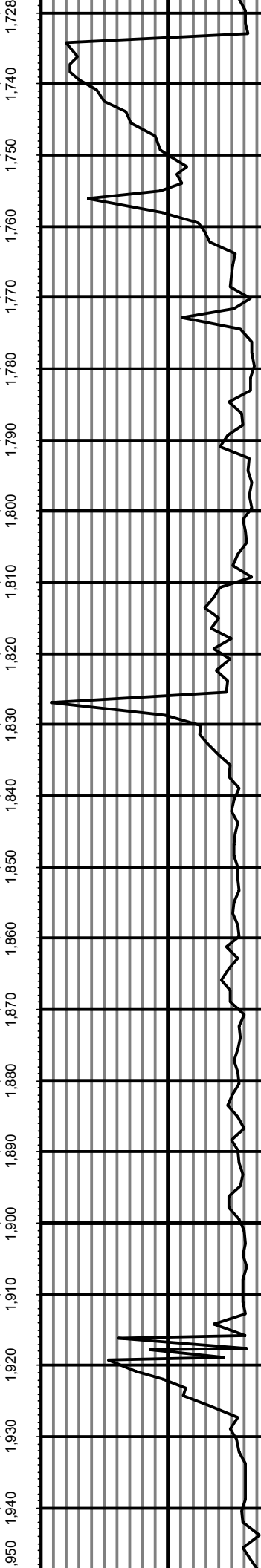
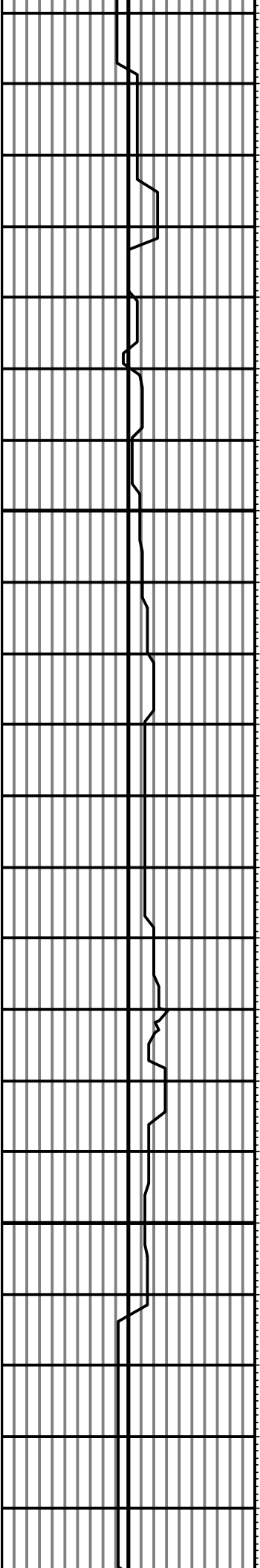
*All interpretations are opinions based on inferences from electrical or other measurements and we cannot and do not guarantee the accuracy or correctness of any interpretation, and we shall not except in the case of gross or willful negligence on our part, be liable or responsible for any loss, cost damages or expenses incurred or sustained by anyone resulting from an interpretation made by any of our officers, agents, or employees.*

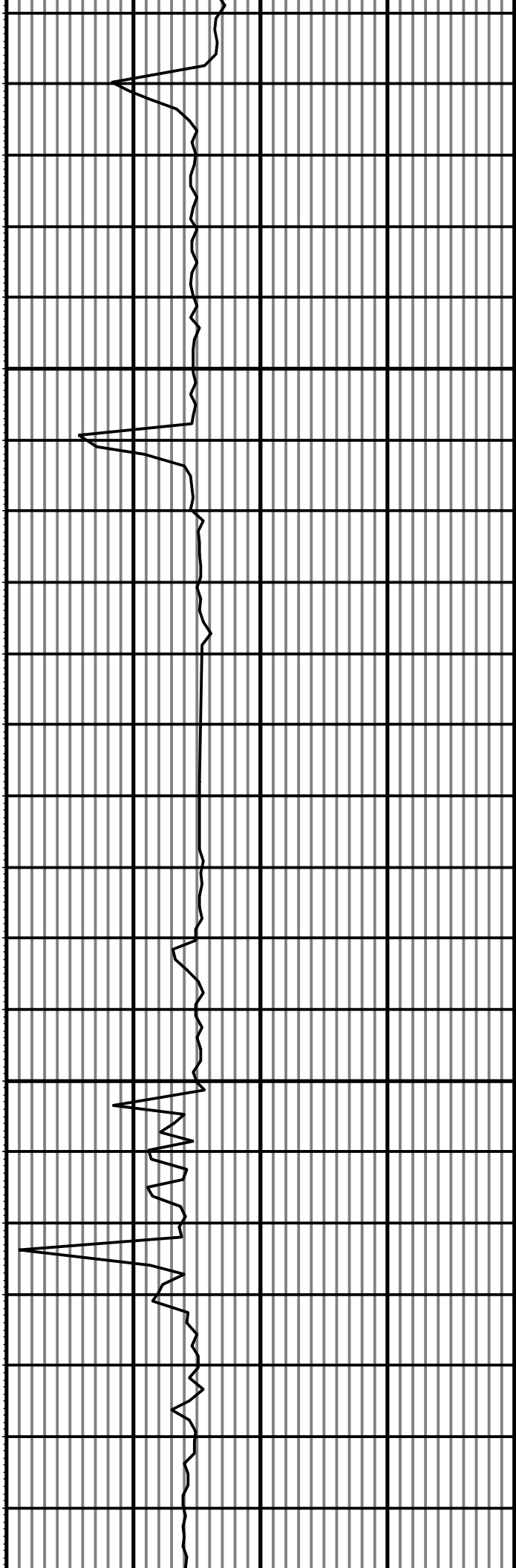
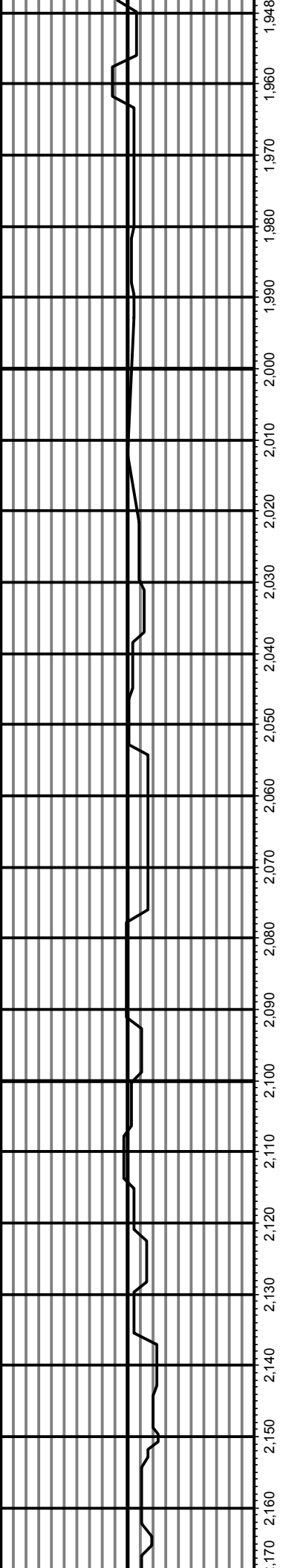
0.00 Counts(mG) 150.00 MD 0.00 ROP(FT/HR) 1,500.00  
150.00 2 300.00 FT 1,500.00 2 3,000.00

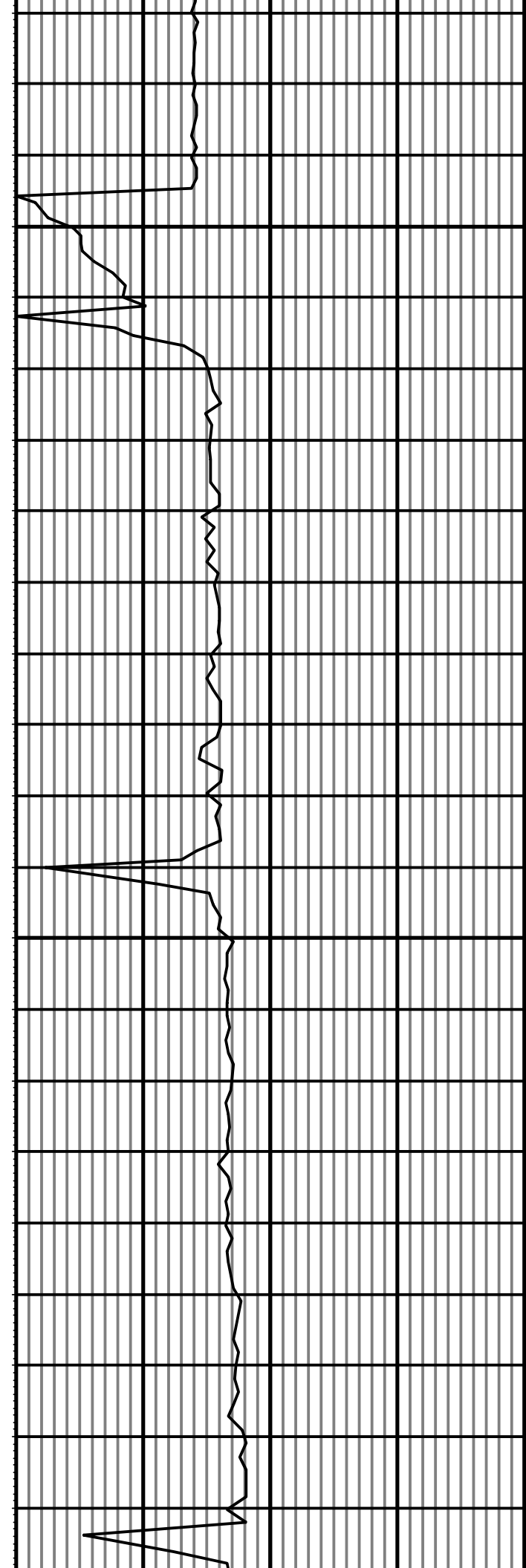
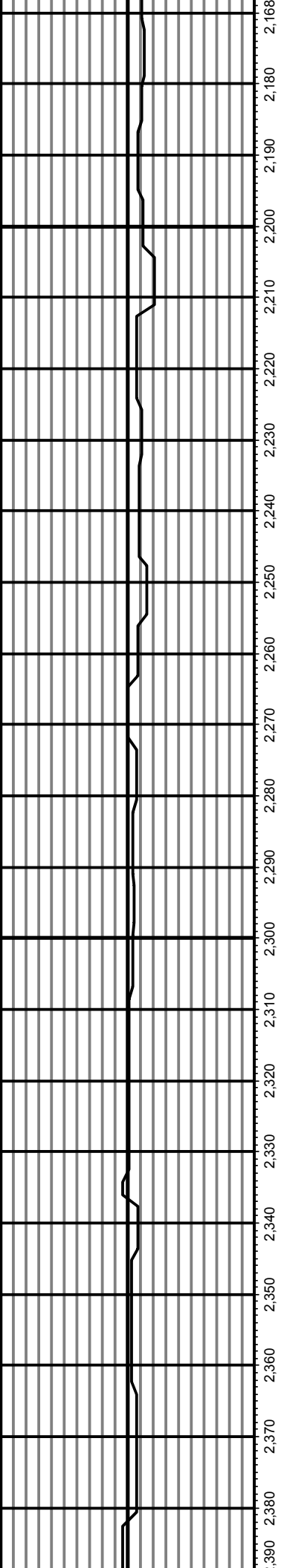


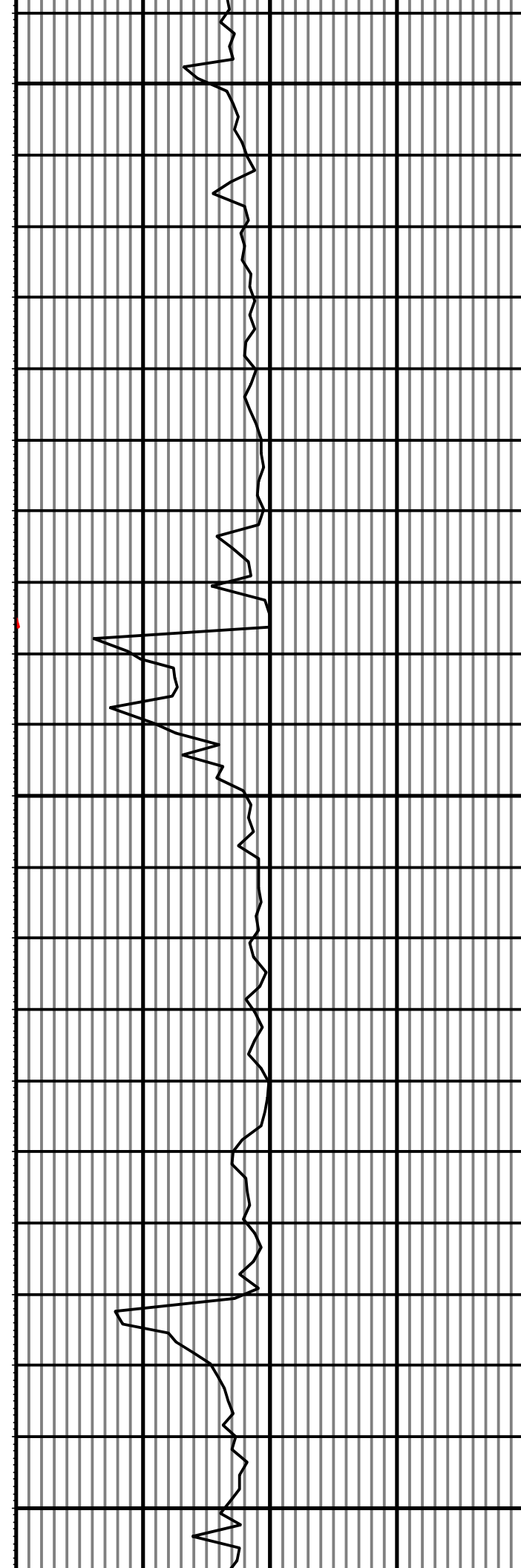
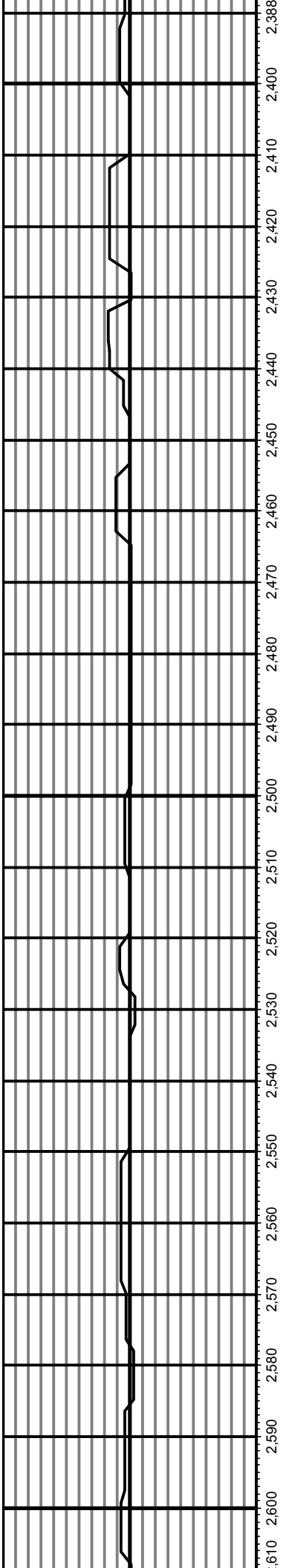


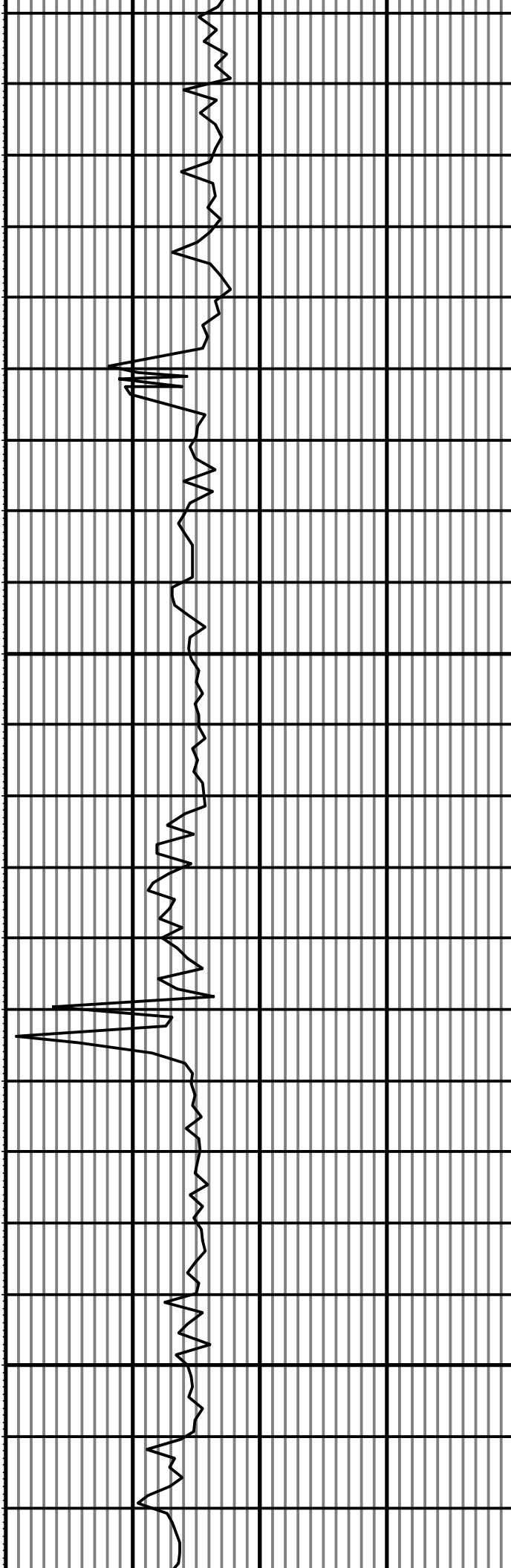
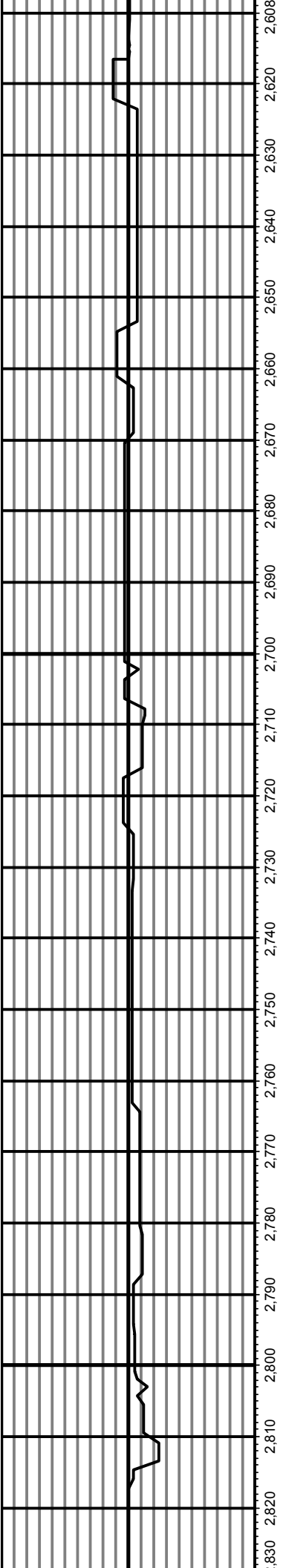




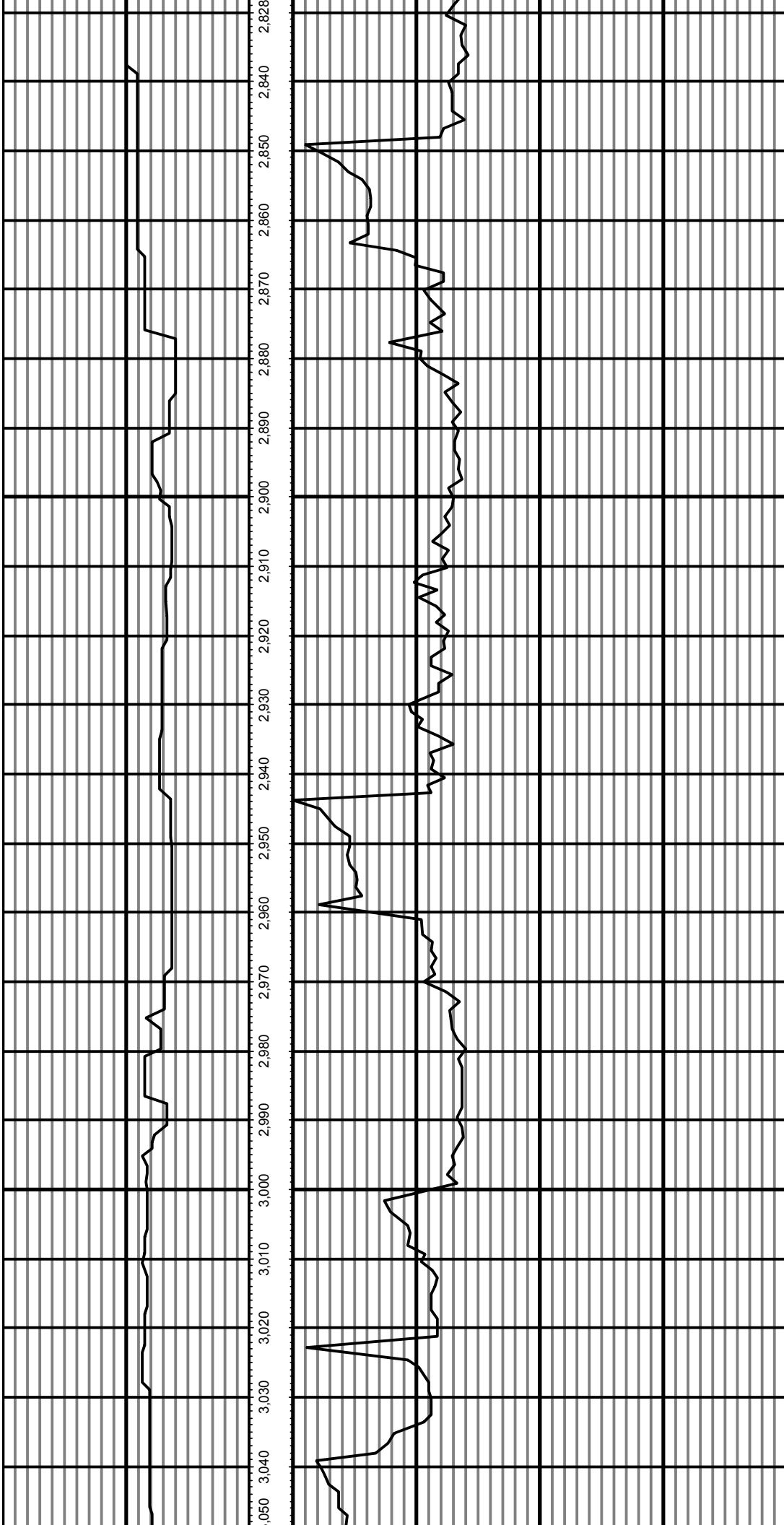


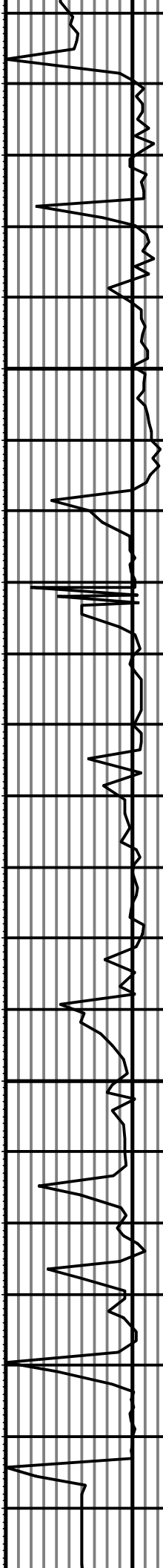
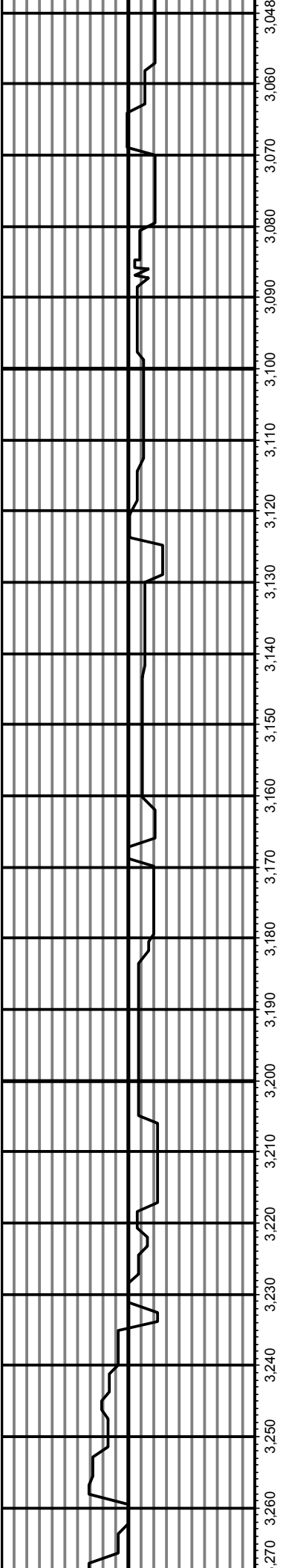


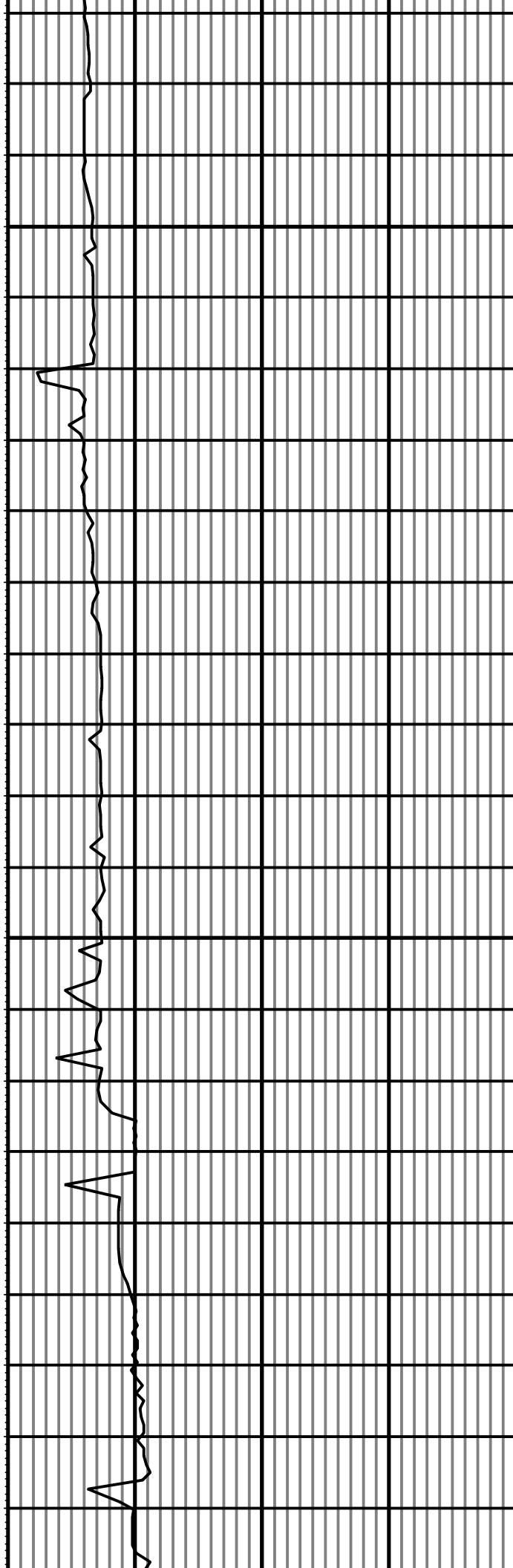
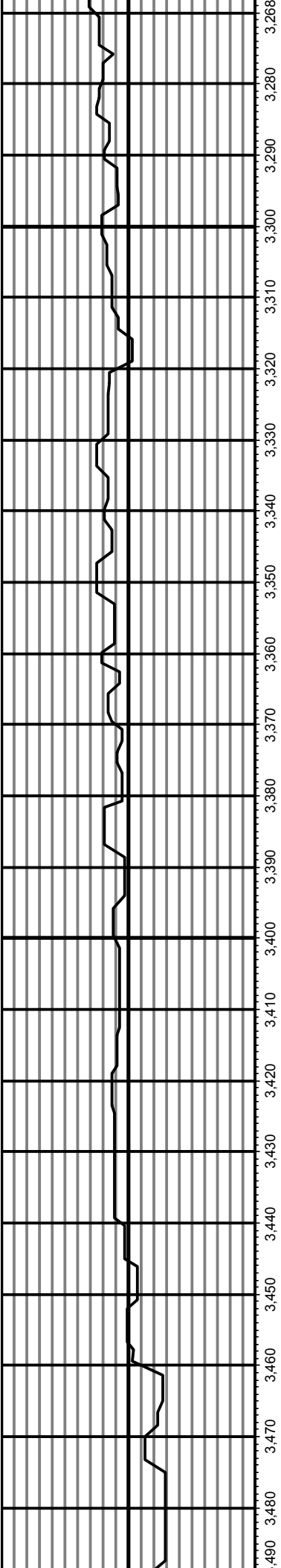


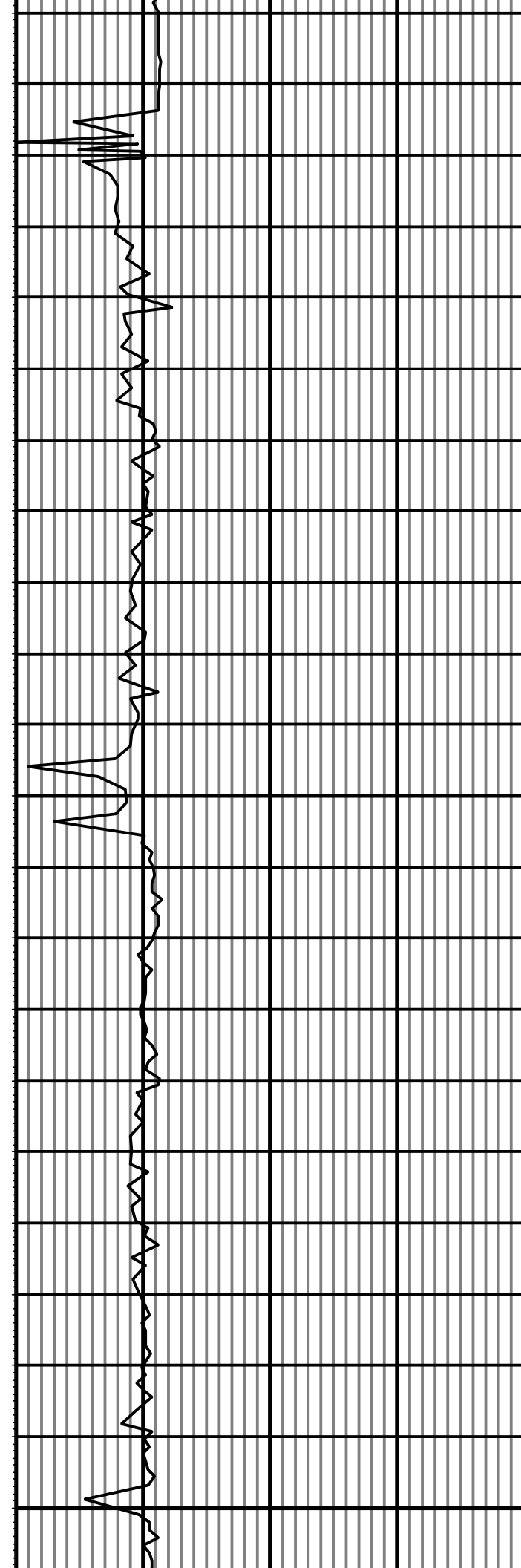
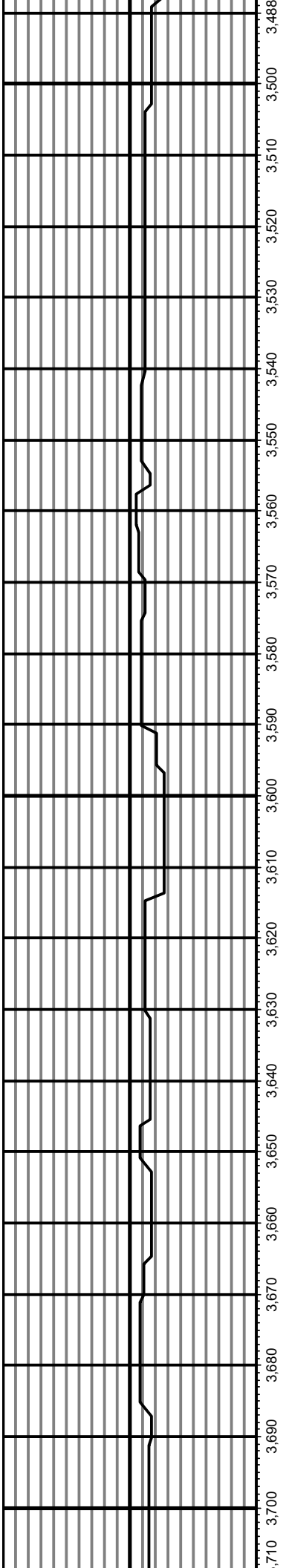


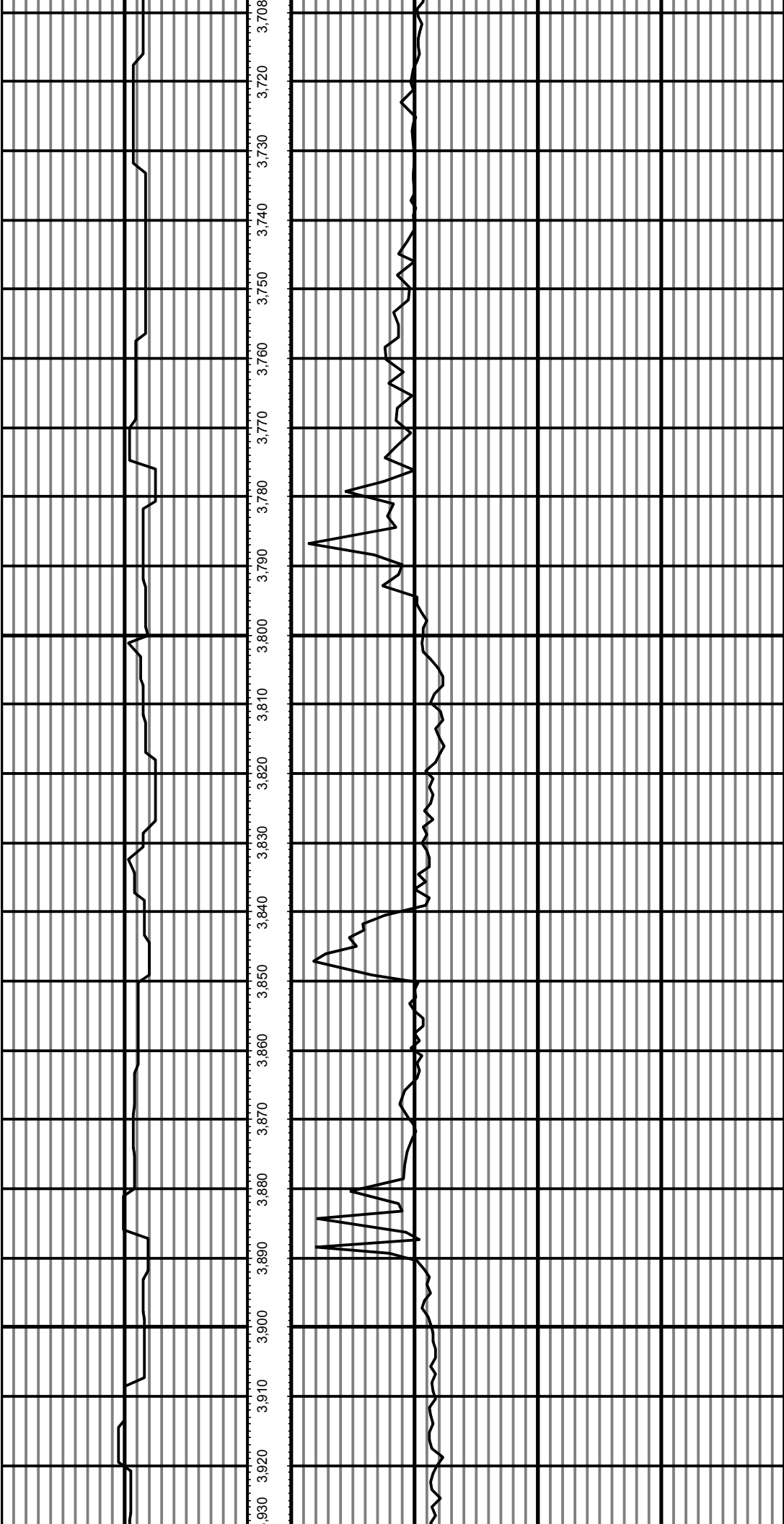


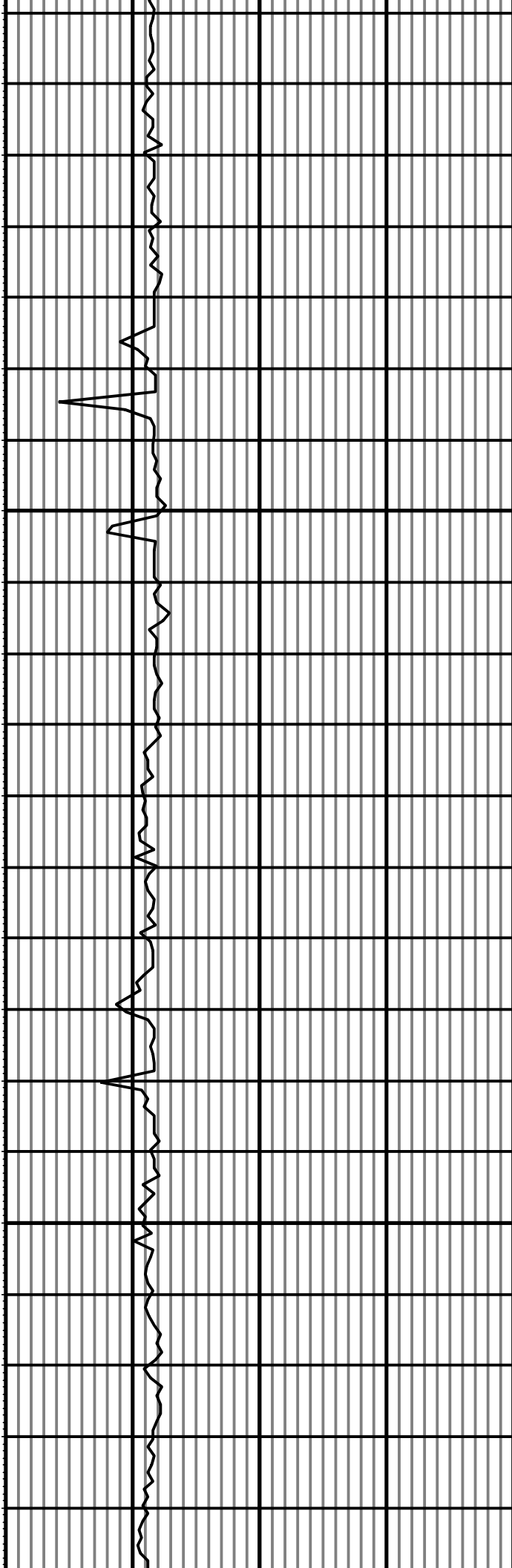
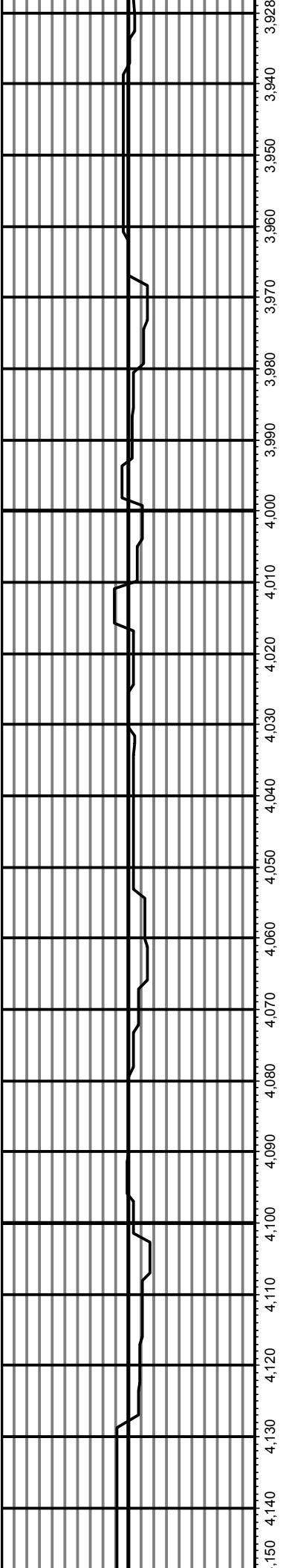


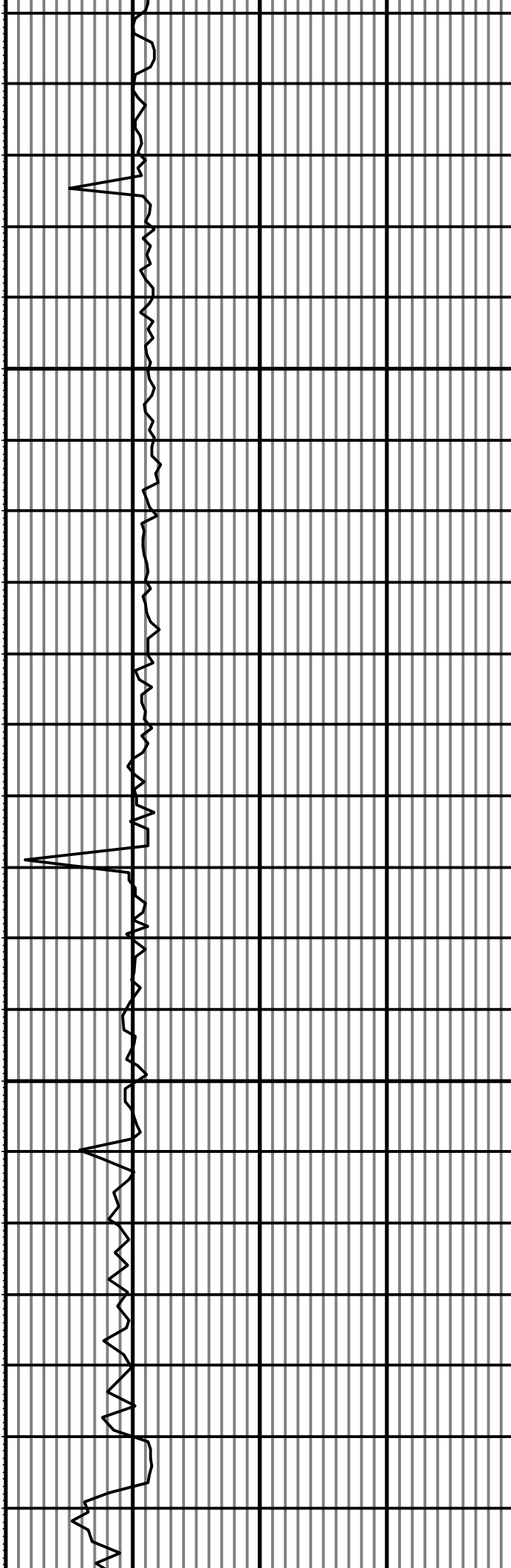
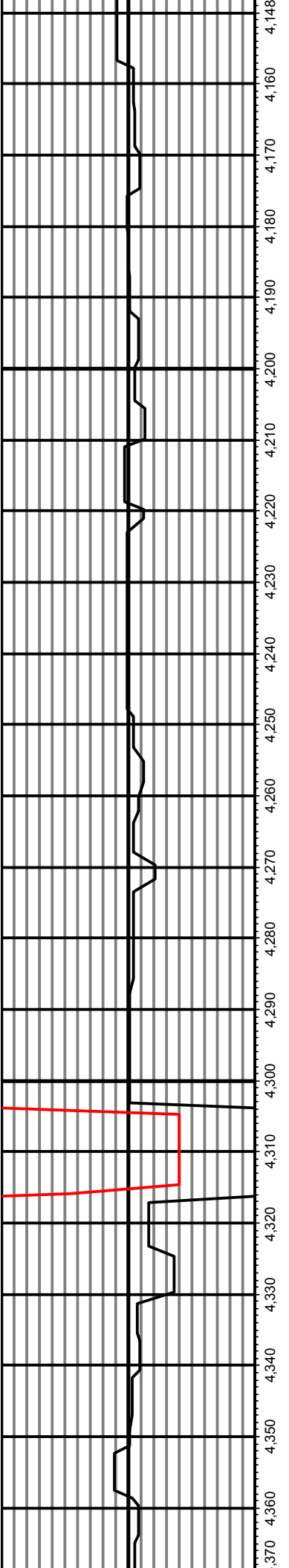


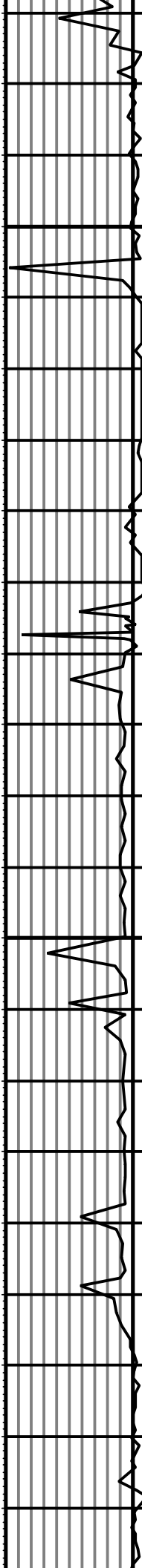
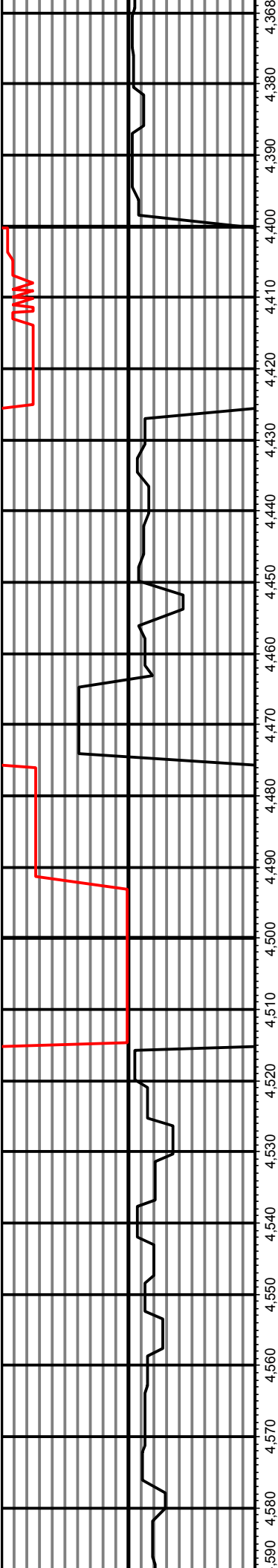




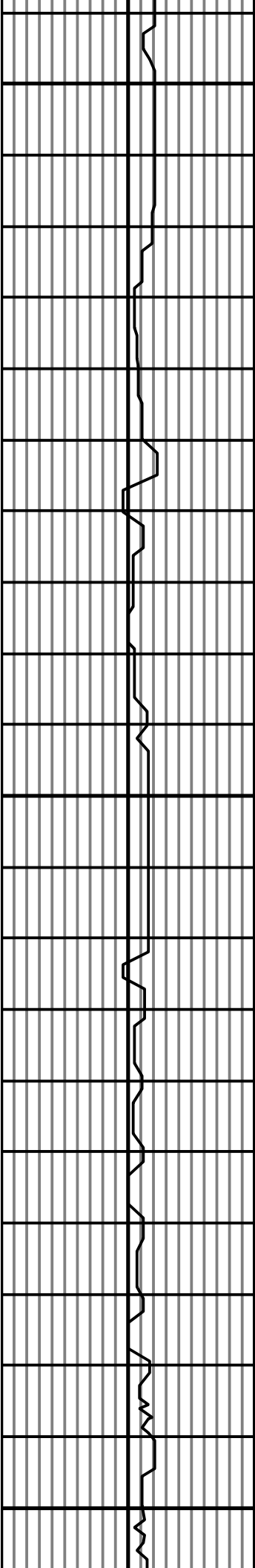




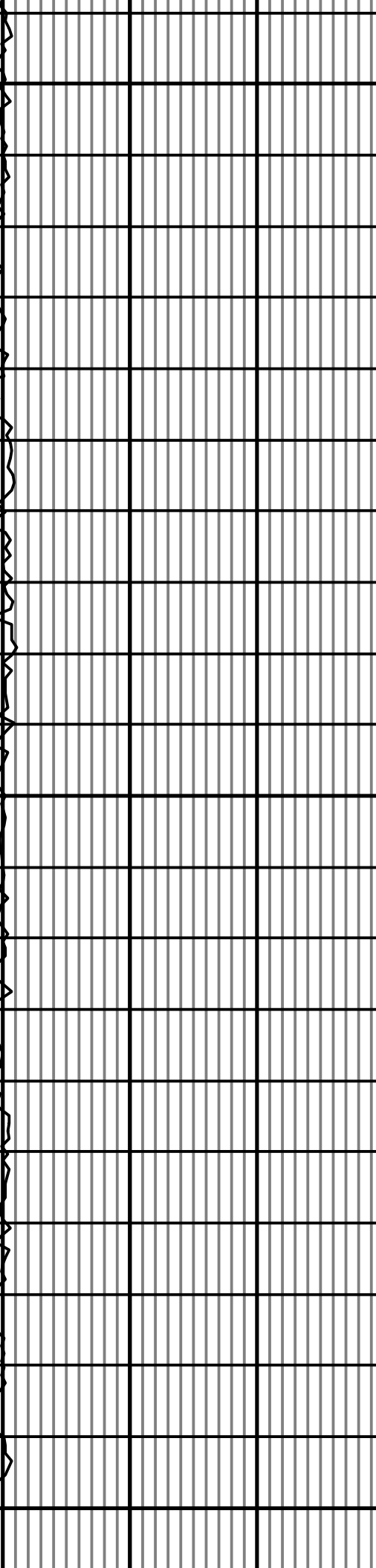
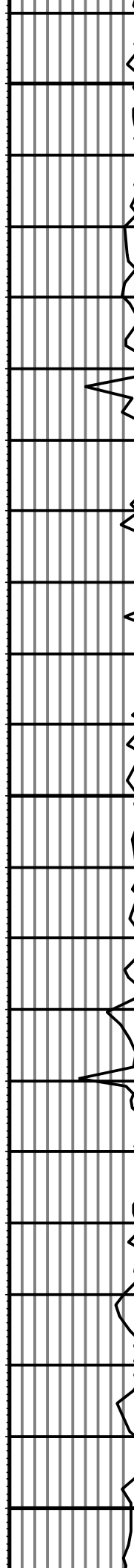


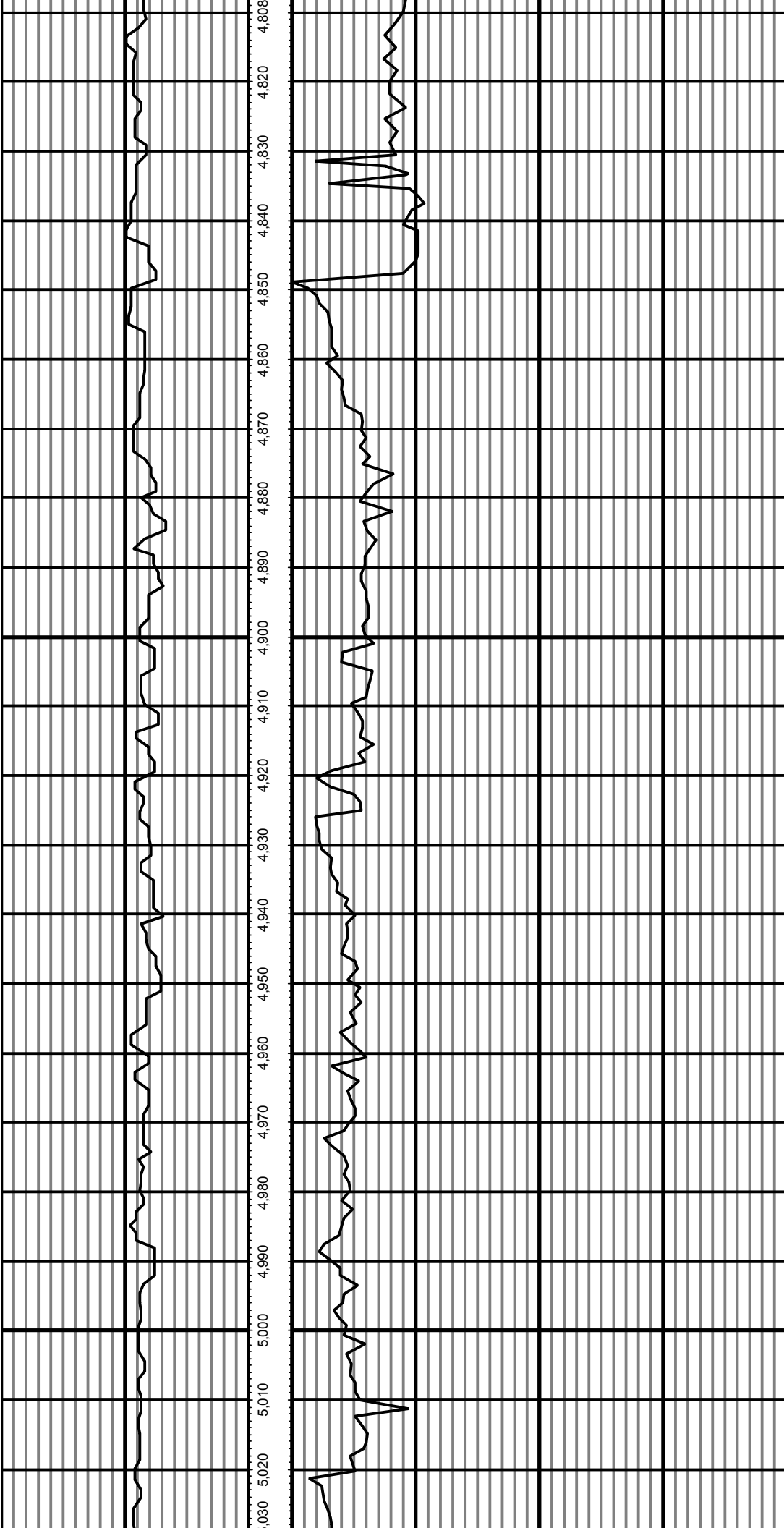


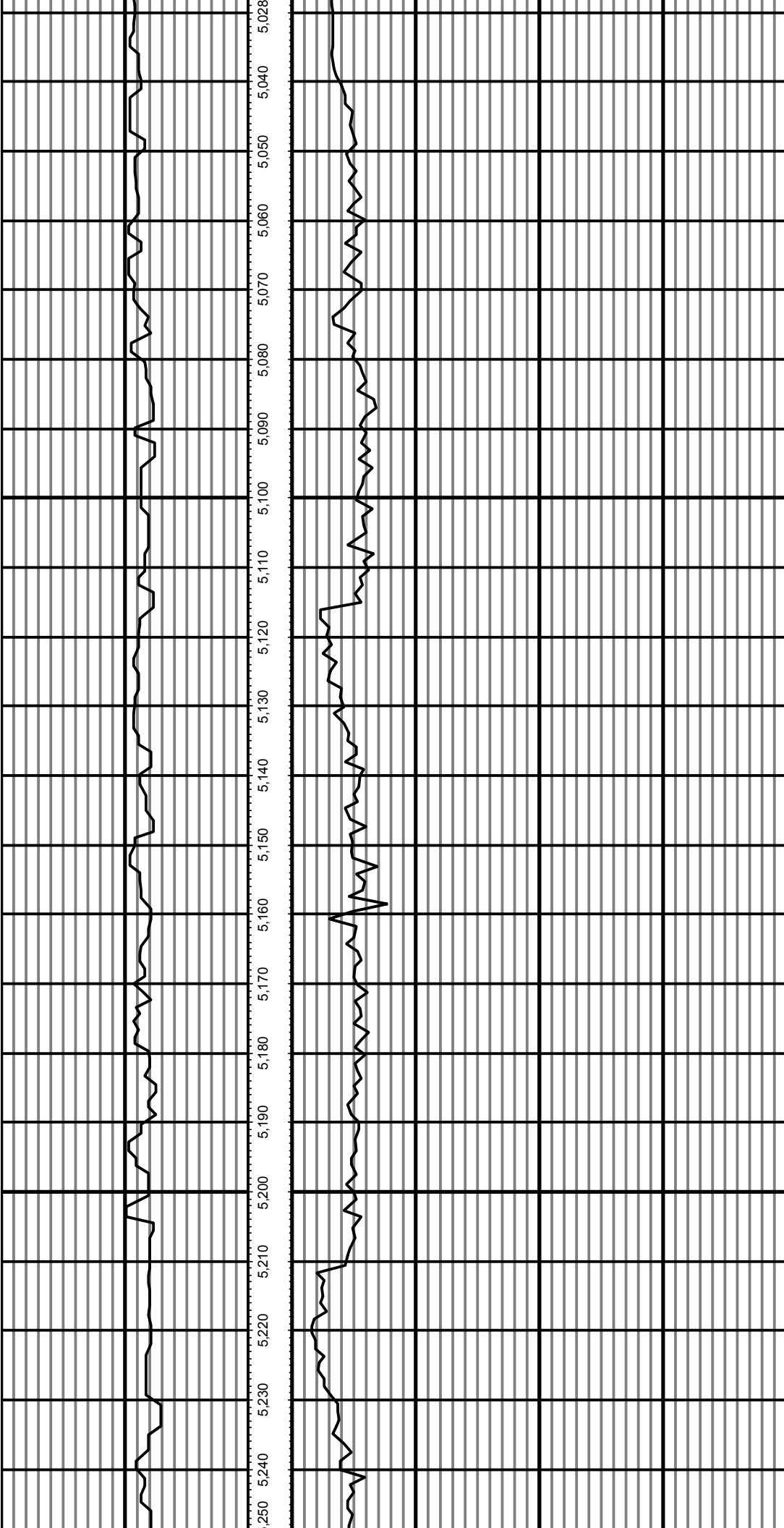


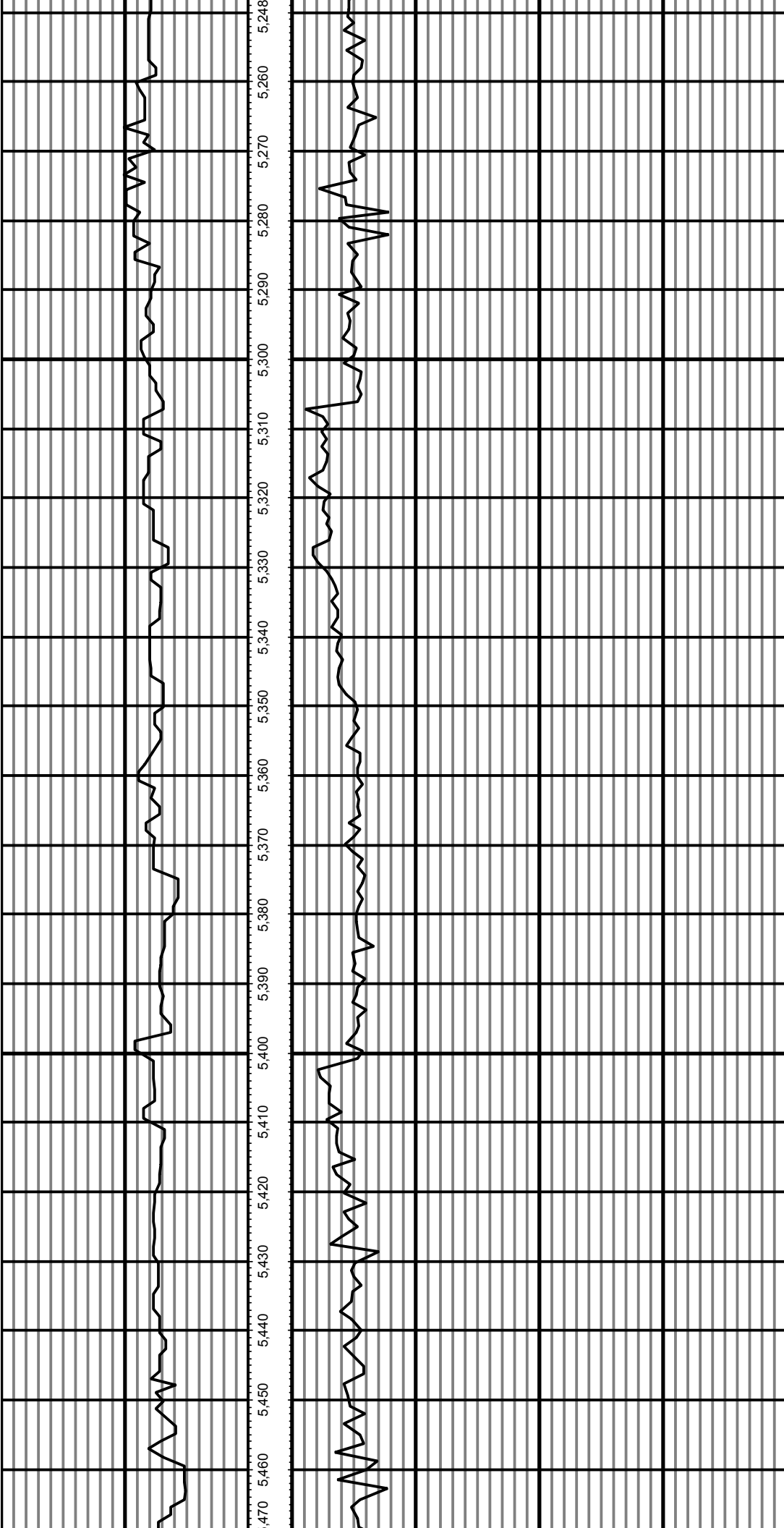


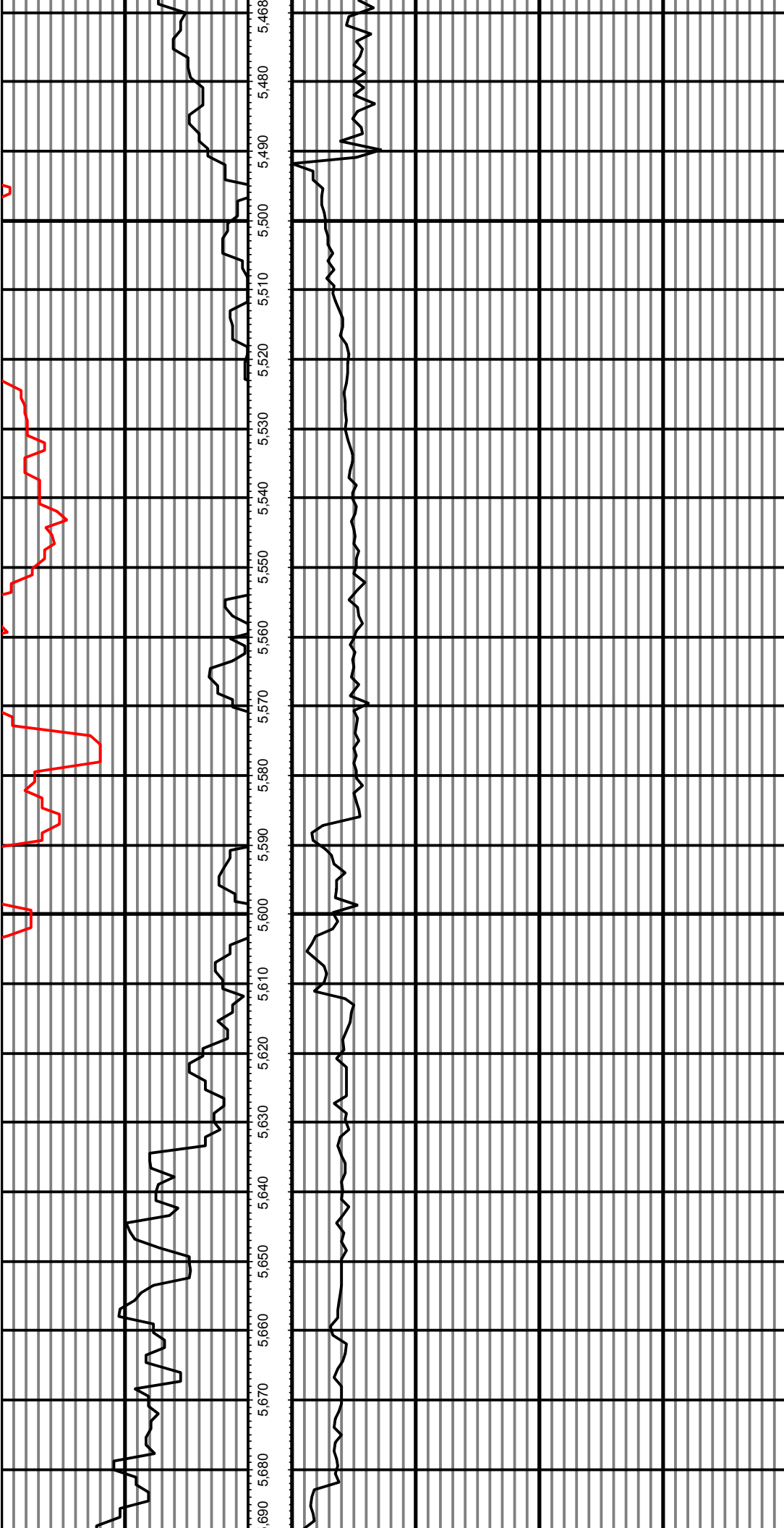
4,588 4,600 4,610 4,620 4,630 4,640 4,650 4,660 4,670 4,680 4,690 4,700 4,710 4,720 4,730 4,740 4,750 4,760 4,770 4,780 4,790 4,800 4,810

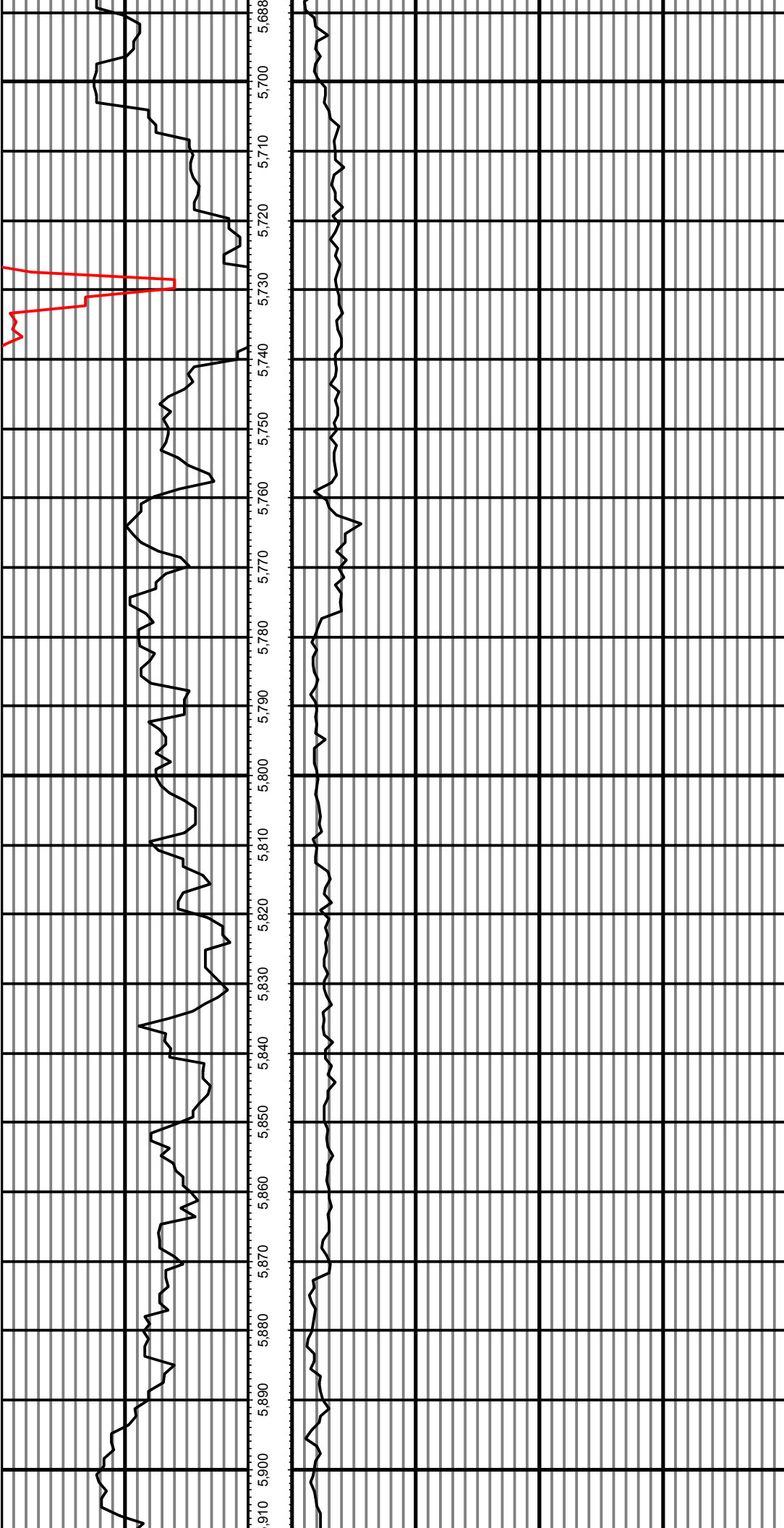


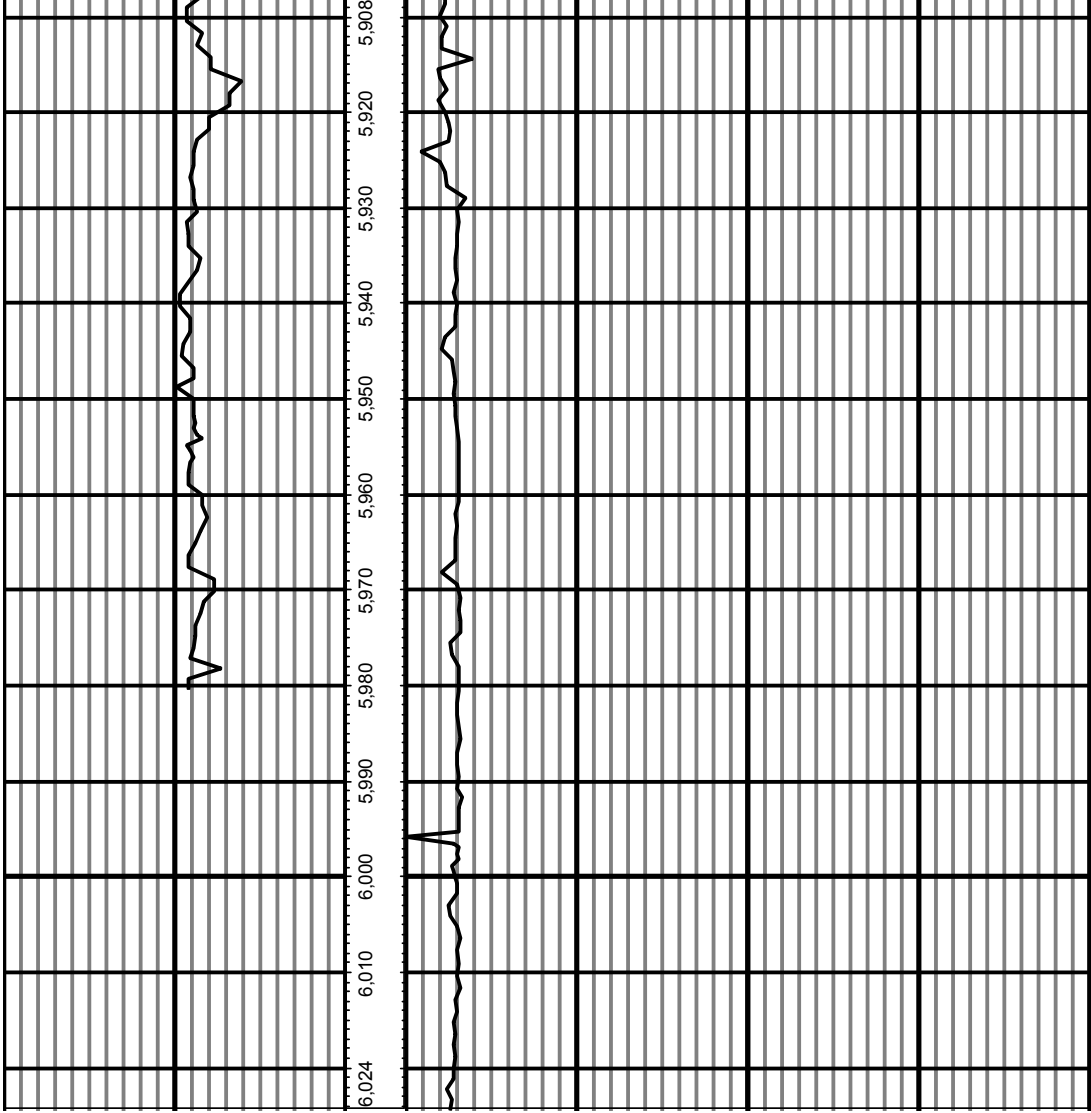












0.00      Counts(mG)      150.00      MD      0.00      ROP(FT/HR)      1,500.00  
150.00      2      300.00      FT      1,500.00      2      3,000.00