



Well Name: RGU 32-26-198  
Surface Location: RGU 42-26-198  
North American Datum 1983 , US State Plane 1983 , Colorado Central Zone  
Ground Elevation: 6622.00

+N/-S  
0.00

+E/-W  
0.00

Northing  
1778109.50

Easting  
2199607.20

Latitude  
39.935202

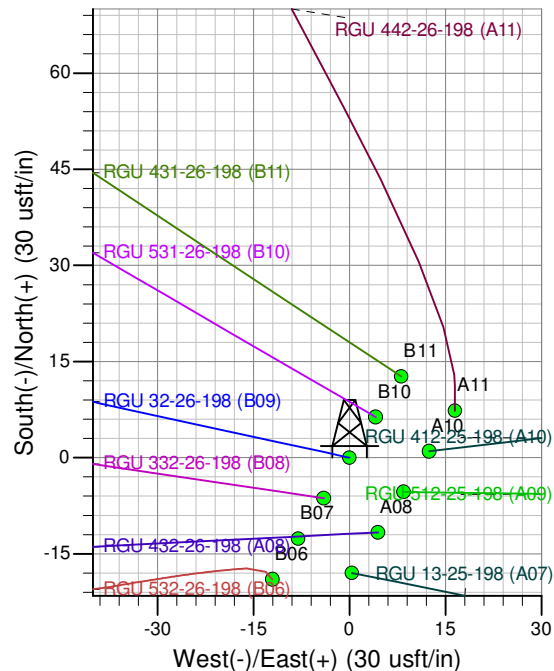
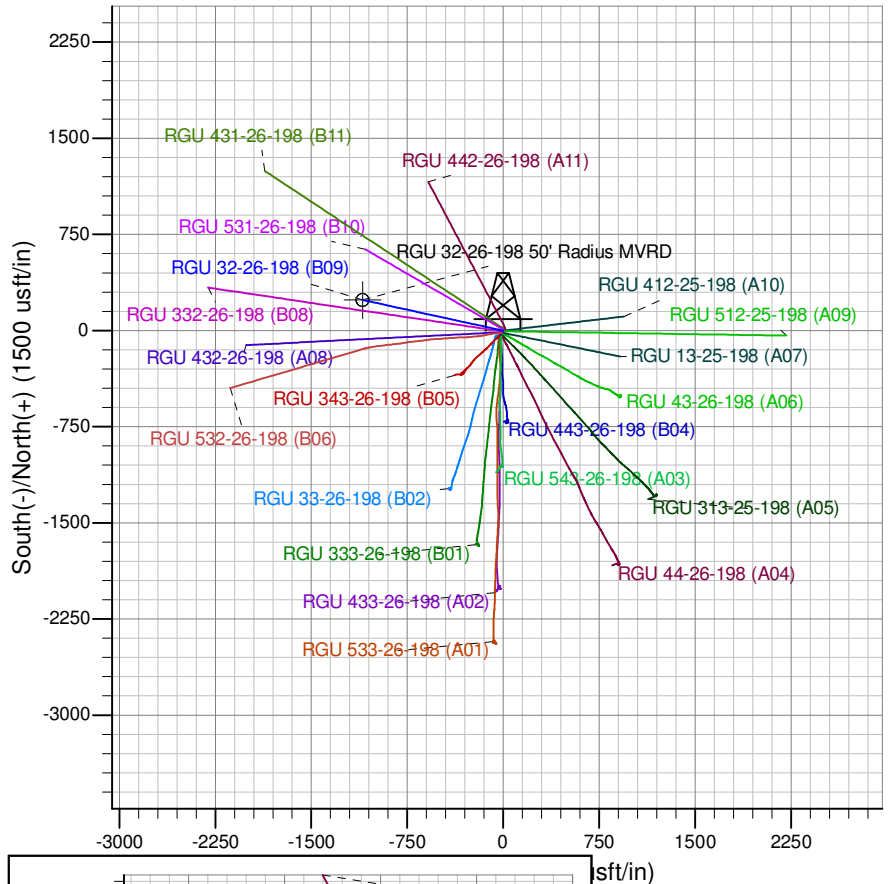
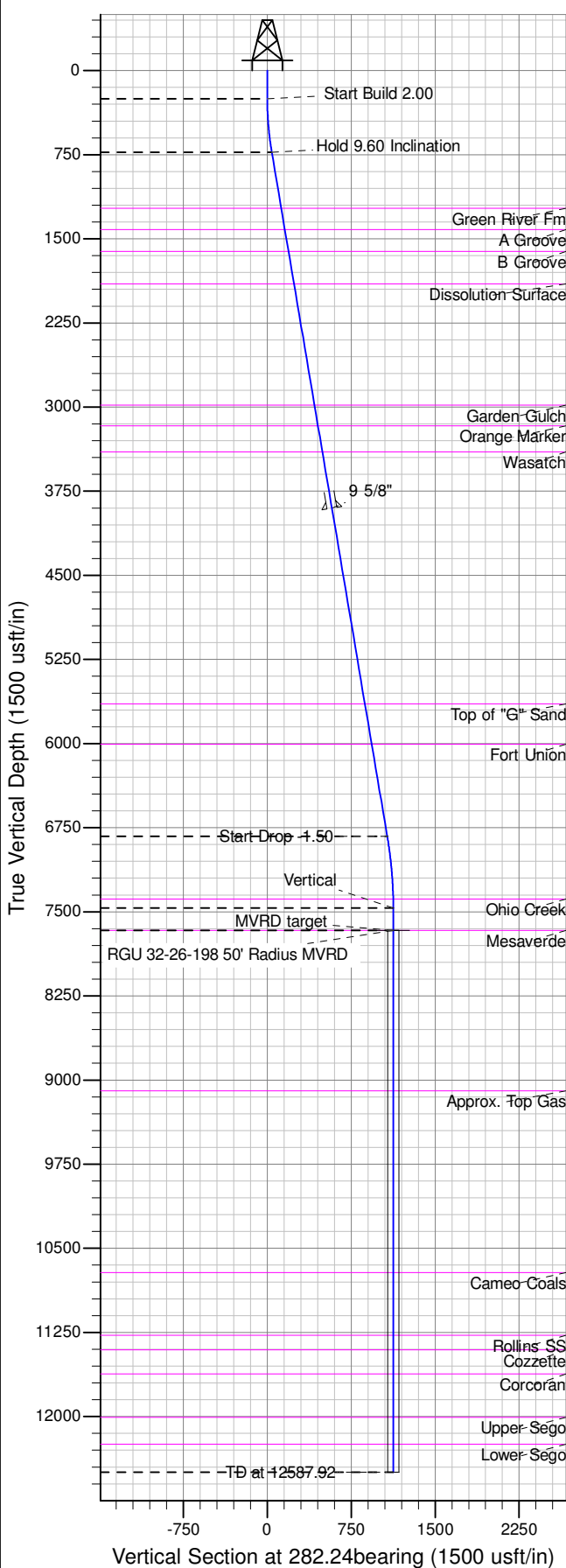
Longitude  
-108.354537

Slot  
B09

KB @ 6646.00usft (HP 318)

#### ANNOTATIONS

TVD	MD	Inc	Azi	+N/-S	+E/-W	Vsect	Departure	Annotation
250.00	250.00	0.00	0.00	0.00	0.00	0.00	0.00	Start Build 2.00
727.84	730.08	9.60	282.24	8.51	-39.22	40.13	40.13	Hold 9.60 Inclination
6828.89	6917.81	9.60	282.24	227.31	-1047.85	1072.22	1072.22	Start Drop -1.50
7466.00	7557.92	0.00	0.00	238.66	-1100.14	1125.73	1125.73	Vertical
7666.00	7757.92	0.00	0.00	238.66	-1100.14	1125.73	1125.73	MVRD target
12496.00	12587.92	0.00	0.00	238.66	-1100.14	1125.73	1125.73	TD at 12587.92



Azimuths to True North  
Magnetic North: 10.36°  
Magnetic Field  
Strength: 52273.7snT  
Dip Angle: 65.99°  
Date: 1/24/2013  
Model: IGRF2010

Project: RG 26-01S-098W  
Site: RGU 42-26-198  
Well: RGU 32-26-198  
Design #3 8May15 sam