

LEGEND:

PROPOSED LOCATION

GREAT WESTERN OIL & GAS COMPANY

MILLIKEN INVESTORS HD 22-199HN, 162HN, 162HC,
 159HN, 122HN, 122HC, 119HN, 079HC, 079HN, 042HN,
 039HC, 039HN, 002HN, OPEN SLOT-O & A
 SECTION 22, T4N, R67W, 6th P.M.
 NW 1/4 NW 1/4

DRAWN BY: J.L.G.

DATE DRAWN: 12-23-14

SCALE: 1:100,000

REVISED: 00-00-00

ACCESS ROAD MAP

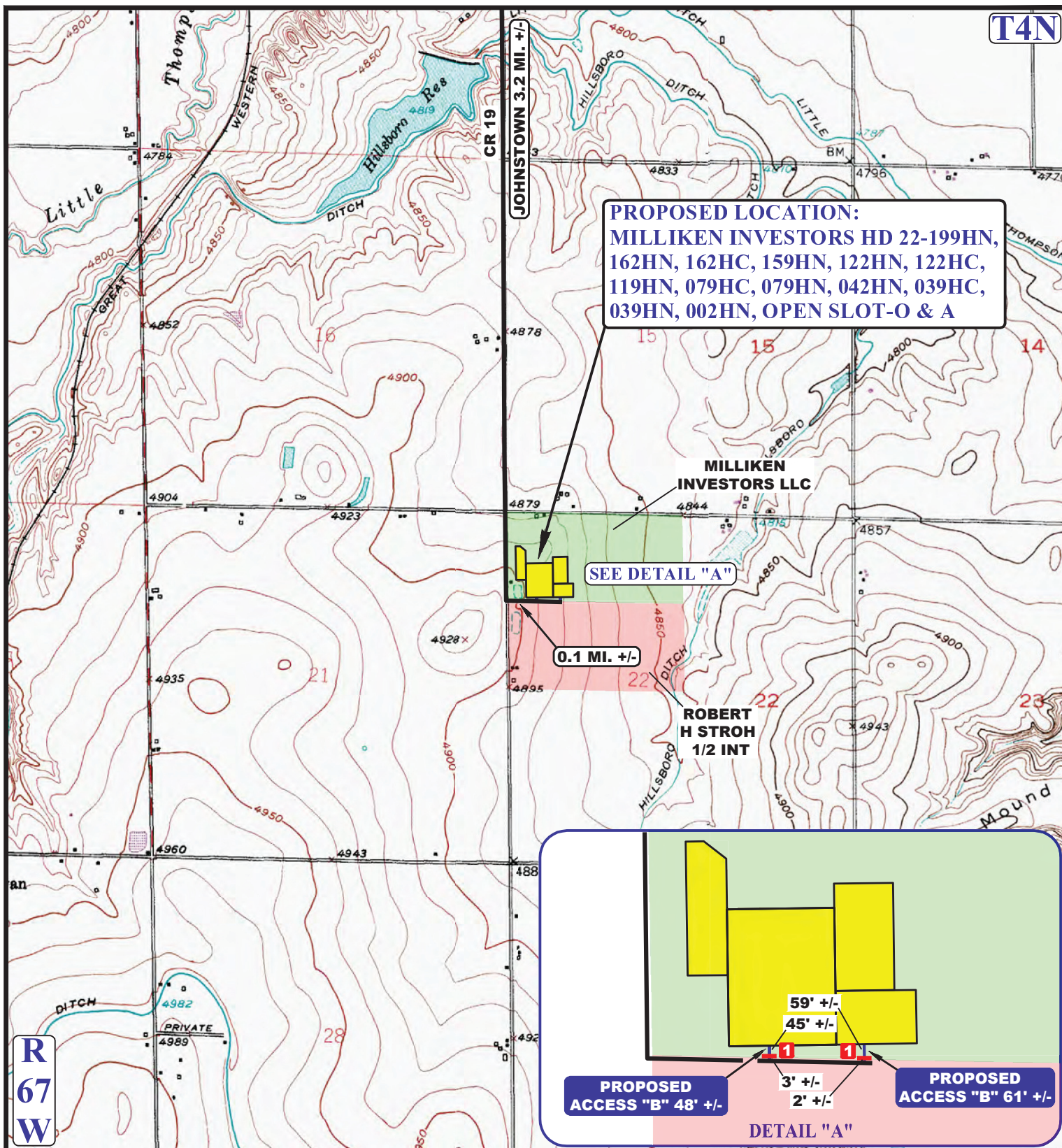
TOPO A



UELS, LLC

Corporate Office * 85 South 200 East
 Vernal, UT 84078 * (435) 789-1017





NOTE: PARCEL DATA SHOWN HAS BEEN OBTAINED FROM VARIOUS SOURCES AND SHOULD BE USED FOR MAPPING, GRAPHIC AND PLANNING PURPOSES ONLY. NO WARRANTY IS MADE BY UINTAH ENGINEERING AND LAND SURVEYING (UELS) FOR ACCURACY OF THE PARCEL DATA.

LEGEND:

— EXISTING ROAD
 - - - PROPOSED ROAD



UELS, LLC
 Corporate Office * 85 South 200 East
 Vernal, UT 84078 * (435) 789-1017



GREAT WESTERN OIL & GAS COMPANY

MILLIKEN INVESTORS HD 22-199HN, 162HN, 162HC,
 159HN, 122HN, 122HC, 119HN, 079HC, 079HN, 042HN,
 039HC, 039HN, 002HN, OPEN SLOT-O & A
 SECTION 22, T4N, R67W, 6th P.M.
 NW 1/4 NW 1/4

DRAWN BY: J.L.G.	DATE DRAWN: 12-23-14
SCALE: 1" = 2000'	REVISED: 00-00-00
ACCESS ROAD MAP	TOPO B