

BONANZA CREEK ENERGY INC.

WELD COUNTY, COLORADO (NAD 83)

NE NW SEC. 6 T5N R61W 6th P.M.

PRONGHORN 21-6-7XRLNB

ORIGINAL WELLBORE

01 December, 2014

Plan: PROPOSAL #1





Project: WELD COUNTY, COLORADO (NAD 83)
Site: NE NW SEC. 6 T5N R61W 6th P.M.
Well: PRONGHORN 21-6-7XRLNB
Wellbore: ORIGINAL WELLBORE
Design: PROPOSAL #1

ANNOTATIONS									
TVD	MD	Inc	Azi	+N/-S	+E/-W	VSect	Dep	Annotation	
1500.0	1500.0	0.00	0.00	0.0	0.0	0.0	0.0	START NUDGE (2°/100ft BUR)	
1843.3	1844.1	6.88	28.28	18.2	9.8	-17.9	20.6	EOB TO 6.88° INC	
5224.4	5249.7	6.88	28.28	377.6	203.1	-371.2	428.8	END OF TANGENT	
5567.7	5593.9	0.00	0.00	395.8	212.9	-389.1	449.4	EOD TO VERTICAL	
5597.7	5623.9	0.00	0.00	395.8	212.9	-389.1	449.4	KOP (12°/100ft BUR)	
6058.9	6248.9	75.00	179.53	41.9	215.8	-35.3	803.3	START OF TANGENT	
6084.8	6348.9	75.00	179.53	-54.7	216.6	61.3	899.9	END OF TANGENT	
6101.0	6473.9	90.00	179.53	-178.2	217.6	184.8	1023.5	7" ICP *NEW* - PRONGHORN 21-6-7XRLNB	
6101.0	15950.3	90.00	179.53	-9654.3	295.2	9658.8	10499.8	BHL - PRONGHORN 21-6-7XRLNB	

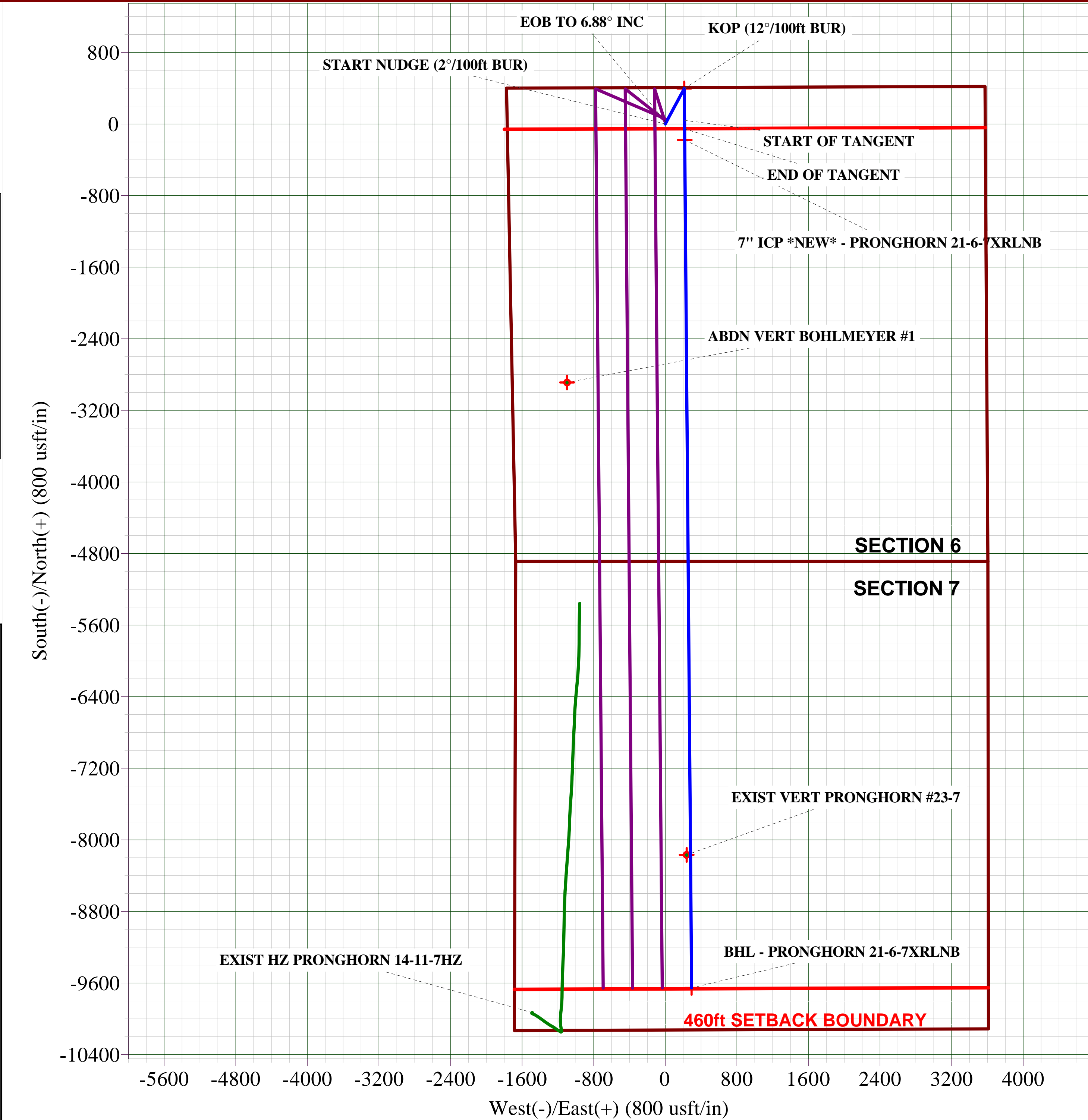
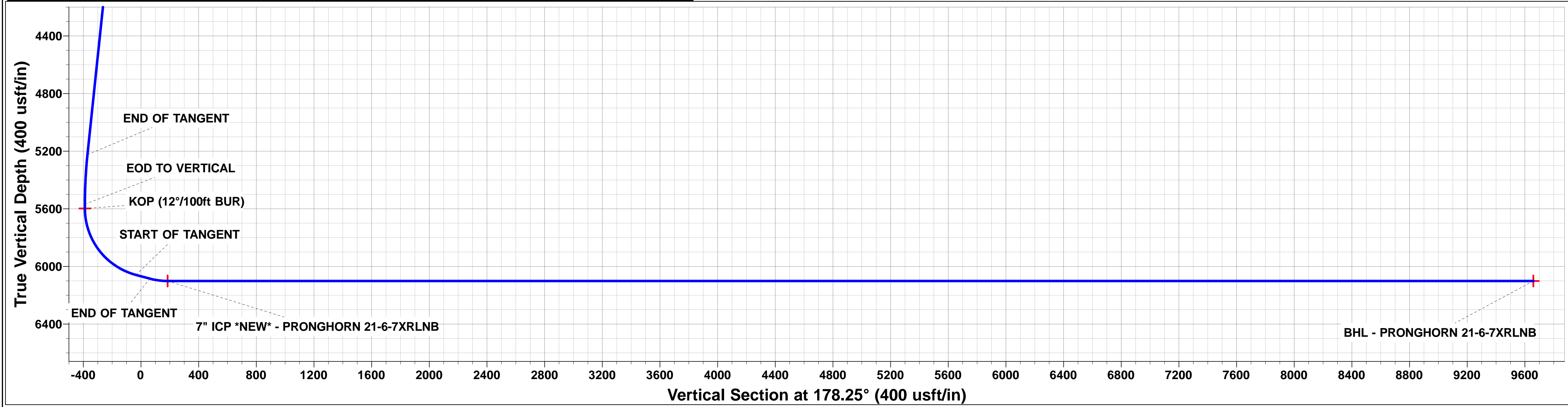
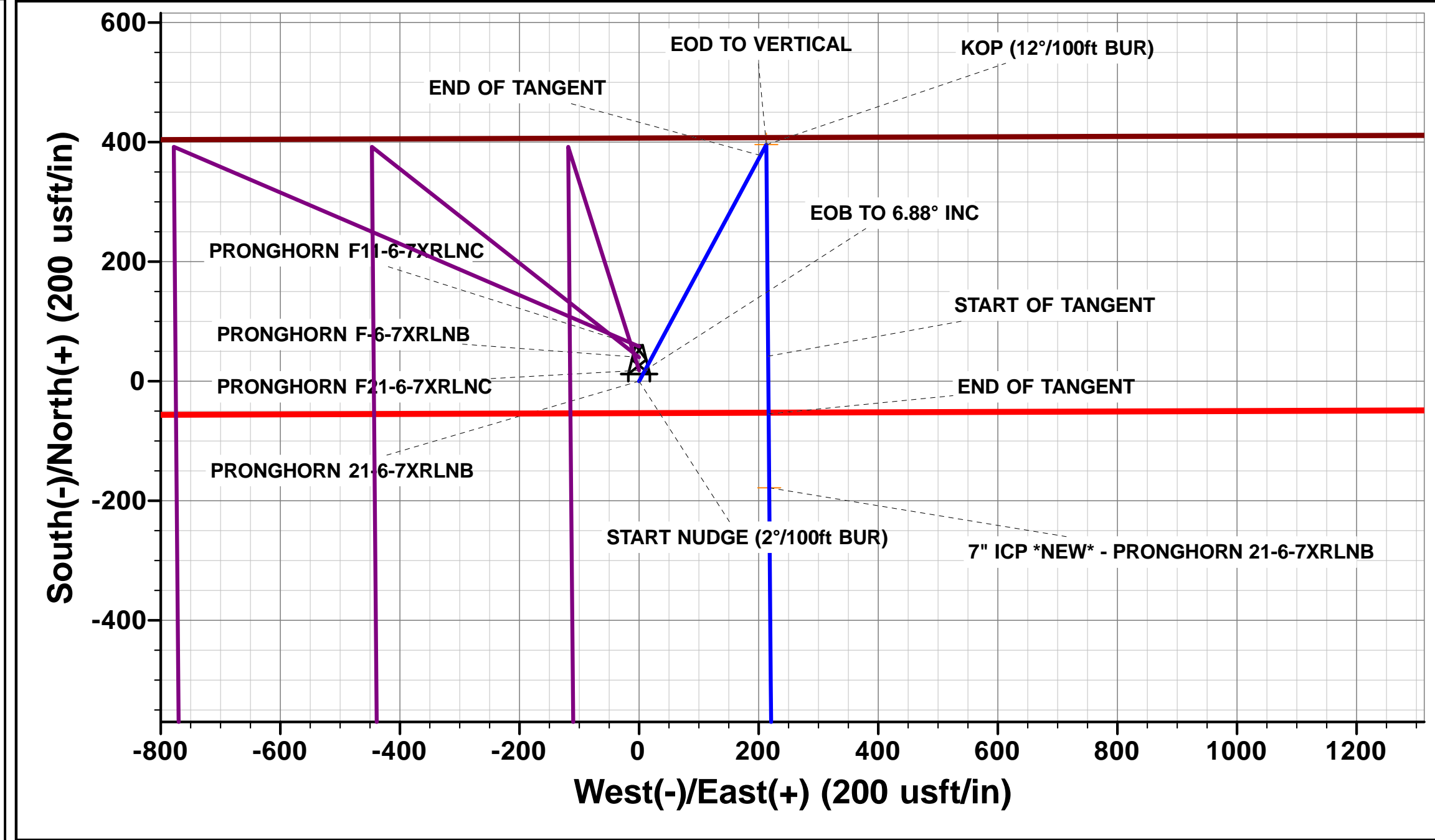
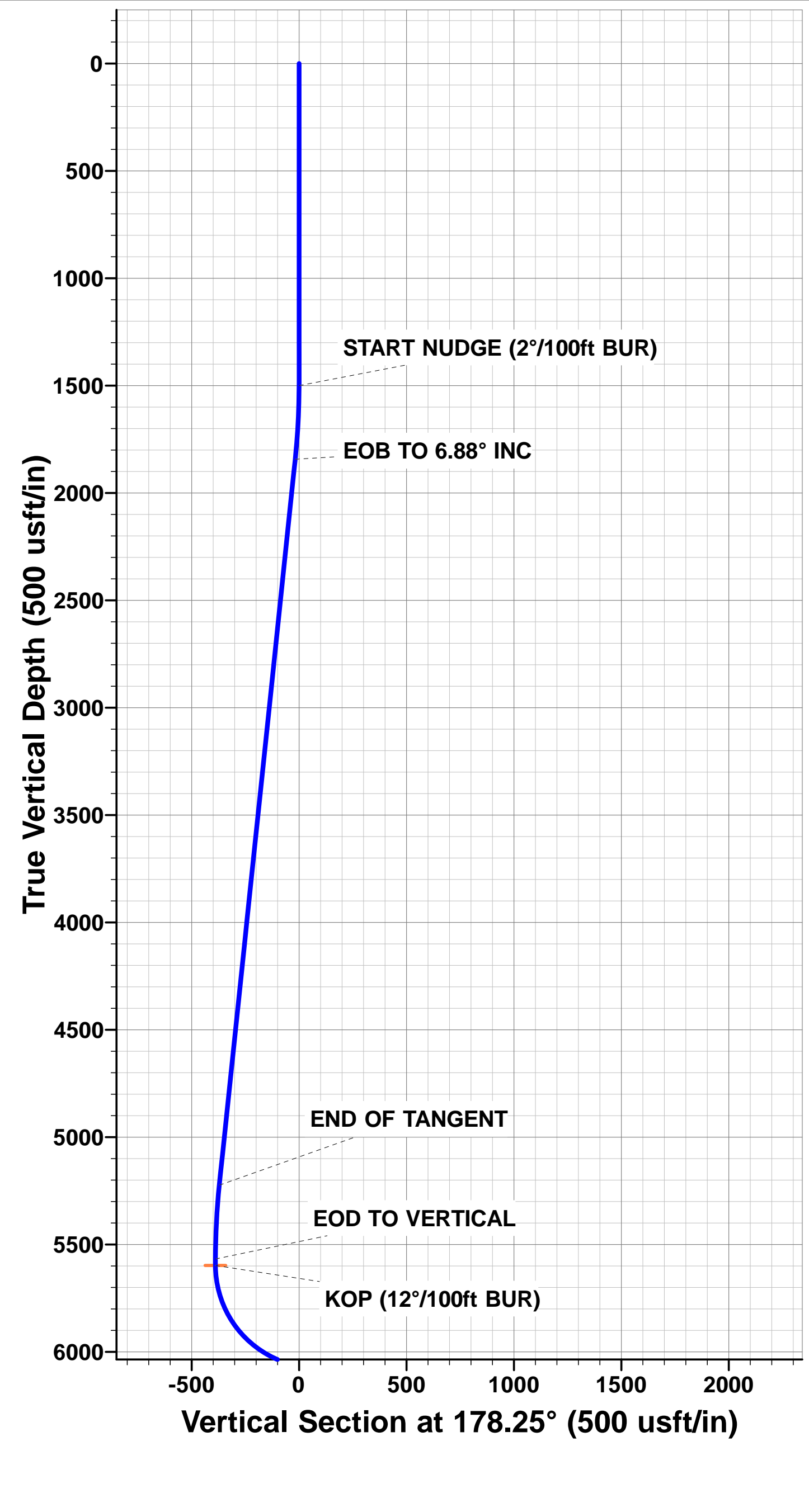
PROPOSED LOCAL COORDINATES:

SHL: 410ft FNL & 1766ft FWL Sec 6

7" ICP *NEW*: 589ft FNL & 1980ft FWL Sec 6

BHL: 470ft FSL & 1980 ft FWL Sec 7

WELLBORE TARGET DETAILS (LAT/LONG)					
Name	TVD	+N/-S	+E/-W	Latitude	Longitude
KOP - PRONGHORN 21-6-7XRLNB	5597.7	395.8	212.9	40.437386	-104.255085
7" ICP *NEW* - PRONGHORN 21-6-7XRLNB	6101.0	-178.2	217.6	40.435811	-104.255068
BHL - PRONGHORN 21-6-7XRLNB	6101.0	-9654.3	295.2	40.409800	-104.254790



Planning Report



Database:	EDM 5000.1 Single User Db	Local Co-ordinate Reference:	Well PRONGHORN 21-6-7XRLNB
Company:	BONANZA CREEK ENERGY INC.	TVD Reference:	KB-EST @ 4621.0usft (Original Well Elev)
Project:	WELD COUNTY, COLORADO (NAD 83)	MD Reference:	KB-EST @ 4621.0usft (Original Well Elev)
Site:	NE NW SEC. 6 T5N R61W 6th P.M.	North Reference:	True
Well:	PRONGHORN 21-6-7XRLNB	Survey Calculation Method:	Minimum Curvature
Wellbore:	ORIGINAL WELLBORE		
Design:	PROPOSAL #1		

Project	WELD COUNTY, COLORADO (NAD 83)		
Map System:	US State Plane 1983	System Datum:	Mean Sea Level
Geo Datum:	North American Datum 1983		
Map Zone:	Colorado Northern Zone		Using geodetic scale factor

Site	NE NW SEC. 6 T5N R61W 6th P.M.		
Site Position:		Northing:	1,404,272.20 usft
From:	Lat/Long	Easting:	3,346,310.94 usft
Position Uncertainty:	0.0 usft	Slot Radius:	1.10000ft
		Latitude:	40.436460
		Longitude:	-104.255850
		Grid Convergence:	0.80 °

Well	PRONGHORN 21-6-7XRLNB		
Well Position	+N/-S	-58.3 usft	Northing:
	+E/-W	0.0 usft	Easting:
Position Uncertainty		0.0 usft	Wellhead Elevation:
			Latitude:
			Longitude:
			Ground Level:

Wellbore	ORIGINAL WELLBORE				
Magnetics	Model Name	Sample Date	Declination (°)	Dip Angle (°)	Field Strength (nT)
	IGRF2010	01/12/2014	8.12	67.04	52,839

Design	PROPOSAL #1			
Audit Notes:				
Version:	Phase:	PROTOTYPE	Tie On Depth:	0.0
Vertical Section:	Depth From (TVD) (usft)	+N/-S (usft)	+E/-W (usft)	Direction (°)
	0.0	0.0	0.0	178.25

Plan Sections											
MD (usft)	Inc (°)	Azi (°)	Vertical Depth	SS (usft)	+N/-S (usft)	+E/-W (usft)	Dogleg Rate (°/100usf)	Build Rate (°/100usf)	Turn Rate (°/100usf)	TFO (°)	Target
0.0	0.00	0.00	0.0	-4,621.0	0.0	0.0	0.00	0.00	0.00	0.00	
1,500.0	0.00	0.00	1,500.0	-3,121.0	0.0	0.0	0.00	0.00	0.00	0.00	
1,844.1	6.88	28.28	1,843.3	-2,777.7	18.2	9.8	2.00	2.00	0.00	28.28	
5,249.7	6.88	28.28	5,224.4	603.4	377.6	203.1	0.00	0.00	0.00	0.00	
5,593.9	0.00	0.00	5,567.7	946.7	395.8	212.9	2.00	-2.00	0.00	180.00	
5,623.9	0.00	0.00	5,597.7	976.7	395.8	212.9	0.00	0.00	0.00	0.00	KOP - PRONGHOF
6,248.9	75.00	179.53	6,058.9	1,437.9	41.9	215.8	12.00	12.00	0.00	179.53	
6,348.9	75.00	179.53	6,084.8	1,463.8	-54.7	216.6	0.00	0.00	0.00	0.00	
6,473.9	90.00	179.53	6,101.0	1,480.0	-178.2	217.6	12.00	12.00	0.00	0.00	
15,950.3	90.00	179.53	6,101.0	1,480.0	-9,654.3	295.2	0.00	0.00	0.00	73.07	BHL - PRONGHOR

Planning Report



Database:	EDM 5000.1 Single User Db	Local Co-ordinate Reference:	Well PRONGHORN 21-6-7XRLNB
Company:	BONANZA CREEK ENERGY INC.	TVD Reference:	KB-EST @ 4621.0usft (Original Well Elev)
Project:	WELD COUNTY, COLORADO (NAD 83)	MD Reference:	KB-EST @ 4621.0usft (Original Well Elev)
Site:	NE NW SEC. 6 T5N R61W 6th P.M.	North Reference:	True
Well:	PRONGHORN 21-6-7XRLNB	Survey Calculation Method:	Minimum Curvature
Wellbore:	ORIGINAL WELLBORE		
Design:	PROPOSAL #1		

Planned Survey

MD (usft)	Inc (°)	Azi (°)	TVD (usft)	SS (usft)	+N/-S (usft)	+E/-W (usft)	Vertical Section (usft)	Dogleg Rate (°/100usft)	Build Rate (°/100usft)	Turn Rate (°/100usft)
0.0	0.00	0.00	0.0	4,621.00	0.0	0.0	0.0	0.00	0.00	0.00
100.0	0.00	0.00	100.0	4,521.00	0.0	0.0	0.0	0.00	0.00	0.00
200.0	0.00	0.00	200.0	4,421.00	0.0	0.0	0.0	0.00	0.00	0.00
300.0	0.00	0.00	300.0	4,321.00	0.0	0.0	0.0	0.00	0.00	0.00
400.0	0.00	0.00	400.0	4,221.00	0.0	0.0	0.0	0.00	0.00	0.00
500.0	0.00	0.00	500.0	4,121.00	0.0	0.0	0.0	0.00	0.00	0.00
600.0	0.00	0.00	600.0	4,021.00	0.0	0.0	0.0	0.00	0.00	0.00
700.0	0.00	0.00	700.0	3,921.00	0.0	0.0	0.0	0.00	0.00	0.00
800.0	0.00	0.00	800.0	3,821.00	0.0	0.0	0.0	0.00	0.00	0.00
900.0	0.00	0.00	900.0	3,721.00	0.0	0.0	0.0	0.00	0.00	0.00
1,000.0	0.00	0.00	1,000.0	3,621.00	0.0	0.0	0.0	0.00	0.00	0.00
1,100.0	0.00	0.00	1,100.0	3,521.00	0.0	0.0	0.0	0.00	0.00	0.00
1,200.0	0.00	0.00	1,200.0	3,421.00	0.0	0.0	0.0	0.00	0.00	0.00
1,300.0	0.00	0.00	1,300.0	3,321.00	0.0	0.0	0.0	0.00	0.00	0.00
1,400.0	0.00	0.00	1,400.0	3,221.00	0.0	0.0	0.0	0.00	0.00	0.00
START NUDGE (2°/100ft BUR)										
1,500.0	0.00	0.00	1,500.0	3,121.00	0.0	0.0	0.0	0.00	0.00	0.00
1,600.0	2.00	28.28	1,600.0	3,021.02	1.5	0.8	-1.5	2.00	2.00	0.00
1,700.0	4.00	28.28	1,699.8	2,921.16	6.1	3.3	-6.0	2.00	2.00	0.00
1,800.0	6.00	28.28	1,799.5	2,821.55	13.8	7.4	-13.6	2.00	2.00	0.00
EOB TO 6.88° INC										
1,844.1	6.88	28.28	1,843.3	2,777.68	18.2	9.8	-17.9	2.00	2.00	0.00
1,900.0	6.88	28.28	1,898.8	2,722.23	24.1	13.0	-23.7	0.00	0.00	0.00
2,000.0	6.88	28.28	1,998.0	2,622.95	34.6	18.6	-34.0	0.00	0.00	0.00
2,100.0	6.88	28.28	2,097.3	2,523.67	45.2	24.3	-44.4	0.00	0.00	0.00
2,200.0	6.88	28.28	2,196.6	2,424.39	55.7	30.0	-54.8	0.00	0.00	0.00
2,300.0	6.88	28.28	2,295.9	2,325.11	66.3	35.7	-65.2	0.00	0.00	0.00
2,400.0	6.88	28.28	2,395.2	2,225.83	76.8	41.3	-75.5	0.00	0.00	0.00
2,500.0	6.88	28.28	2,494.4	2,126.55	87.4	47.0	-85.9	0.00	0.00	0.00
2,600.0	6.88	28.28	2,593.7	2,027.27	98.0	52.7	-96.3	0.00	0.00	0.00
2,700.0	6.88	28.28	2,693.0	1,928.00	108.5	58.4	-106.7	0.00	0.00	0.00
2,800.0	6.88	28.28	2,792.3	1,828.72	119.1	64.0	-117.1	0.00	0.00	0.00
2,900.0	6.88	28.28	2,891.6	1,729.44	129.6	69.7	-127.4	0.00	0.00	0.00
3,000.0	6.88	28.28	2,990.8	1,630.16	140.2	75.4	-137.8	0.00	0.00	0.00
3,100.0	6.88	28.28	3,090.1	1,530.88	150.7	81.1	-148.2	0.00	0.00	0.00
3,200.0	6.88	28.28	3,189.4	1,431.60	161.3	86.8	-158.6	0.00	0.00	0.00
3,300.0	6.88	28.28	3,288.7	1,332.32	171.8	92.4	-168.9	0.00	0.00	0.00
3,400.0	6.88	28.28	3,388.0	1,233.04	182.4	98.1	-179.3	0.00	0.00	0.00
3,500.0	6.88	28.28	3,487.2	1,133.76	192.9	103.8	-189.7	0.00	0.00	0.00
3,600.0	6.88	28.28	3,586.5	1,034.48	203.5	109.5	-200.1	0.00	0.00	0.00
3,700.0	6.88	28.28	3,685.8	935.20	214.1	115.1	-210.4	0.00	0.00	0.00
3,800.0	6.88	28.28	3,785.1	835.92	224.6	120.8	-220.8	0.00	0.00	0.00
3,900.0	6.88	28.28	3,884.4	736.64	235.2	126.5	-231.2	0.00	0.00	0.00
4,000.0	6.88	28.28	3,983.6	637.36	245.7	132.2	-241.6	0.00	0.00	0.00
4,100.0	6.88	28.28	4,082.9	538.09	256.3	137.8	-251.9	0.00	0.00	0.00
4,200.0	6.88	28.28	4,182.2	438.81	266.8	143.5	-262.3	0.00	0.00	0.00
4,300.0	6.88	28.28	4,281.5	339.53	277.4	149.2	-272.7	0.00	0.00	0.00
4,400.0	6.88	28.28	4,380.8	240.25	287.9	154.9	-283.1	0.00	0.00	0.00
4,500.0	6.88	28.28	4,480.0	140.97	298.5	160.6	-293.4	0.00	0.00	0.00
4,600.0	6.88	28.28	4,579.3	41.69	309.0	166.2	-303.8	0.00	0.00	0.00
4,700.0	6.88	28.28	4,678.6	-57.59	319.6	171.9	-314.2	0.00	0.00	0.00
4,800.0	6.88	28.28	4,777.9	-156.87	330.1	177.6	-324.6	0.00	0.00	0.00
4,900.0	6.88	28.28	4,877.1	-256.15	340.7	183.3	-334.9	0.00	0.00	0.00
5,000.0	6.88	28.28	4,976.4	-355.43	351.3	188.9	-345.3	0.00	0.00	0.00

Planning Report



Database:	EDM 5000.1 Single User Db	Local Co-ordinate Reference:	Well PRONGHORN 21-6-7XRLNB
Company:	BONANZA CREEK ENERGY INC.	TVD Reference:	KB-EST @ 4621.0usft (Original Well Elev)
Project:	WELD COUNTY, COLORADO (NAD 83)	MD Reference:	KB-EST @ 4621.0usft (Original Well Elev)
Site:	NE NW SEC. 6 T5N R61W 6th P.M.	North Reference:	True
Well:	PRONGHORN 21-6-7XRLNB	Survey Calculation Method:	Minimum Curvature
Wellbore:	ORIGINAL WELLBORE		
Design:	PROPOSAL #1		

Planned Survey

MD (usft)	Inc (°)	Azi (°)	TVD (usft)	SS (usft)	+N/-S (usft)	+E/-W (usft)	Vertical Section (usft)	Dogleg Rate (°/100usft)	Build Rate (°/100usft)	Turn Rate (°/100usft)
5,100.0	6.88	28.28	5,075.7	-454.71	361.8	194.6	-355.7	0.00	0.00	0.00
5,200.0	6.88	28.28	5,175.0	-553.99	372.4	200.3	-366.1	0.00	0.00	0.00
END OF TANGENT										
5,249.7	6.88	28.28	5,224.4	-603.38	377.6	203.1	-371.2	0.00	0.00	0.00
5,300.0	5.88	28.28	5,274.3	-653.32	382.5	205.8	-376.1	2.00	-2.00	0.00
5,400.0	3.88	28.28	5,373.9	-752.95	390.0	209.8	-383.4	2.00	-2.00	0.00
5,500.0	1.88	28.28	5,473.8	-852.82	394.4	212.2	-387.8	2.00	-2.00	0.00
EOD TO VERTICAL										
5,593.9	0.00	0.00	5,567.7	-946.70	395.8	212.9	-389.1	2.00	-2.00	0.00
5,600.0	0.00	0.00	5,573.8	-952.80	395.8	212.9	-389.1	0.00	0.00	0.00
KOP (12°/100ft BUR)										
5,623.9	0.00	0.00	5,597.7	-976.70	395.8	212.9	-389.1	0.00	0.00	0.00
5,700.0	9.13	179.53	5,673.5	-1,052.48	389.7	212.9	-383.1	12.00	12.00	0.00
5,800.0	21.13	179.53	5,769.8	-1,148.84	363.7	213.2	-357.0	12.00	12.00	0.00
5,900.0	33.13	179.53	5,858.7	-1,237.67	318.2	213.5	-311.5	12.00	12.00	0.00
6,000.0	45.13	179.53	5,936.1	-1,315.10	255.2	214.1	-248.5	12.00	12.00	0.00
6,100.0	57.13	179.53	5,998.7	-1,377.73	177.5	214.7	-170.8	12.00	12.00	0.00
6,200.0	69.13	179.53	6,043.8	-1,422.85	88.4	215.4	-81.8	12.00	12.00	0.00
START OF TANGENT										
6,248.9	75.00	179.53	6,058.9	-1,437.90	41.9	215.8	-35.3	12.00	12.00	0.00
6,300.0	75.00	179.53	6,072.1	-1,451.12	-7.4	216.2	14.0	0.00	0.00	0.00
END OF TANGENT										
6,348.9	75.00	179.53	6,084.8	-1,463.78	-54.7	216.6	61.3	0.00	0.00	0.00
6,400.0	81.13	179.53	6,095.3	-1,474.34	-104.6	217.0	111.2	12.00	12.00	0.00
7" ICP *NEW* - PRONGHORN 21-6-7XRLNB										
6,473.9	90.00	179.53	6,101.0	-1,480.05	-178.2	217.6	184.8	12.00	12.00	0.00
6,500.0	90.00	179.53	6,101.0	-1,480.05	-204.3	217.8	210.9	0.00	0.00	0.00
6,600.0	90.00	179.53	6,101.0	-1,480.05	-304.3	218.6	310.9	0.00	0.00	0.00
6,700.0	90.00	179.53	6,101.0	-1,480.05	-404.3	219.5	410.9	0.00	0.00	0.00
6,800.0	90.00	179.53	6,101.0	-1,480.05	-504.3	220.3	510.8	0.00	0.00	0.00
6,900.0	90.00	179.53	6,101.0	-1,480.05	-604.3	221.1	610.8	0.00	0.00	0.00
7,000.0	90.00	179.53	6,101.0	-1,480.05	-704.3	221.9	710.8	0.00	0.00	0.00
7,100.0	90.00	179.53	6,101.0	-1,480.05	-804.3	222.7	810.8	0.00	0.00	0.00
7,200.0	90.00	179.53	6,101.0	-1,480.05	-904.3	223.6	910.7	0.00	0.00	0.00
7,300.0	90.00	179.53	6,101.0	-1,480.05	-1,004.3	224.4	1,010.7	0.00	0.00	0.00
7,400.0	90.00	179.53	6,101.0	-1,480.05	-1,104.3	225.2	1,110.7	0.00	0.00	0.00
7,500.0	90.00	179.53	6,101.0	-1,480.05	-1,204.3	226.0	1,210.7	0.00	0.00	0.00
7,600.0	90.00	179.53	6,101.0	-1,480.05	-1,304.3	226.8	1,310.6	0.00	0.00	0.00
7,700.0	90.00	179.53	6,101.0	-1,480.05	-1,404.3	227.7	1,410.6	0.00	0.00	0.00
7,800.0	90.00	179.53	6,101.0	-1,480.05	-1,504.3	228.5	1,510.6	0.00	0.00	0.00
7,900.0	90.00	179.53	6,101.0	-1,480.05	-1,604.3	229.3	1,610.6	0.00	0.00	0.00
8,000.0	90.00	179.53	6,101.0	-1,480.05	-1,704.3	230.1	1,710.5	0.00	0.00	0.00
8,100.0	90.00	179.53	6,101.0	-1,480.05	-1,804.3	230.9	1,810.5	0.00	0.00	0.00
8,200.0	90.00	179.53	6,101.0	-1,480.05	-1,904.3	231.8	1,910.5	0.00	0.00	0.00
8,300.0	90.00	179.53	6,101.0	-1,480.04	-2,004.3	232.6	2,010.5	0.00	0.00	0.00
8,400.0	90.00	179.53	6,101.0	-1,480.04	-2,104.3	233.4	2,110.4	0.00	0.00	0.00
8,500.0	90.00	179.53	6,101.0	-1,480.04	-2,204.3	234.2	2,210.4	0.00	0.00	0.00
8,600.0	90.00	179.53	6,101.0	-1,480.04	-2,304.3	235.0	2,310.4	0.00	0.00	0.00
8,700.0	90.00	179.53	6,101.0	-1,480.04	-2,404.3	235.9	2,410.4	0.00	0.00	0.00
8,800.0	90.00	179.53	6,101.0	-1,480.04	-2,504.3	236.7	2,510.3	0.00	0.00	0.00
8,900.0	90.00	179.53	6,101.0	-1,480.04	-2,604.3	237.5	2,610.3	0.00	0.00	0.00
9,000.0	90.00	179.53	6,101.0	-1,480.04	-2,704.3	238.3	2,710.3	0.00	0.00	0.00
9,100.0	90.00	179.53	6,101.0	-1,480.04	-2,804.3	239.1	2,810.2	0.00	0.00	0.00

Planning Report



Database:	EDM 5000.1 Single User Db	Local Co-ordinate Reference:	Well PRONGHORN 21-6-7XRLNB
Company:	BONANZA CREEK ENERGY INC.	TVD Reference:	KB-EST @ 4621.0usft (Original Well Elev)
Project:	WELD COUNTY, COLORADO (NAD 83)	MD Reference:	KB-EST @ 4621.0usft (Original Well Elev)
Site:	NE NW SEC. 6 T5N R61W 6th P.M.	North Reference:	True
Well:	PRONGHORN 21-6-7XRLNB	Survey Calculation Method:	Minimum Curvature
Wellbore:	ORIGINAL WELLBORE		
Design:	PROPOSAL #1		

Planned Survey										
MD (usft)	Inc (°)	Azi (°)	TVD (usft)	SS (usft)	+N/-S (usft)	+E/-W (usft)	Vertical Section (usft)	Dogleg Rate (°/100usft)	Build Rate (°/100usft)	Turn Rate (°/100usft)
9,200.0	90.00	179.53	6,101.0	-1,480.04	-2,904.2	240.0	2,910.2	0.00	0.00	0.00
9,300.0	90.00	179.53	6,101.0	-1,480.04	-3,004.2	240.8	3,010.2	0.00	0.00	0.00
9,400.0	90.00	179.53	6,101.0	-1,480.04	-3,104.2	241.6	3,110.2	0.00	0.00	0.00
9,500.0	90.00	179.53	6,101.0	-1,480.04	-3,204.2	242.4	3,210.1	0.00	0.00	0.00
9,600.0	90.00	179.53	6,101.0	-1,480.04	-3,304.2	243.2	3,310.1	0.00	0.00	0.00
9,700.0	90.00	179.53	6,101.0	-1,480.04	-3,404.2	244.1	3,410.1	0.00	0.00	0.00
9,800.0	90.00	179.53	6,101.0	-1,480.04	-3,504.2	244.9	3,510.1	0.00	0.00	0.00
9,900.0	90.00	179.53	6,101.0	-1,480.04	-3,604.2	245.7	3,610.0	0.00	0.00	0.00
10,000.0	90.00	179.53	6,101.0	-1,480.04	-3,704.2	246.5	3,710.0	0.00	0.00	0.00
10,100.0	90.00	179.53	6,101.0	-1,480.04	-3,804.2	247.3	3,810.0	0.00	0.00	0.00
10,200.0	90.00	179.53	6,101.0	-1,480.04	-3,904.2	248.2	3,910.0	0.00	0.00	0.00
10,300.0	90.00	179.53	6,101.0	-1,480.04	-4,004.2	249.0	4,009.9	0.00	0.00	0.00
10,400.0	90.00	179.53	6,101.0	-1,480.04	-4,104.2	249.8	4,109.9	0.00	0.00	0.00
10,500.0	90.00	179.53	6,101.0	-1,480.04	-4,204.2	250.6	4,209.9	0.00	0.00	0.00
10,600.0	90.00	179.53	6,101.0	-1,480.04	-4,304.2	251.4	4,309.9	0.00	0.00	0.00
10,700.0	90.00	179.53	6,101.0	-1,480.04	-4,404.2	252.2	4,409.8	0.00	0.00	0.00
10,800.0	90.00	179.53	6,101.0	-1,480.04	-4,504.2	253.1	4,509.8	0.00	0.00	0.00
10,900.0	90.00	179.53	6,101.0	-1,480.04	-4,604.2	253.9	4,609.8	0.00	0.00	0.00
11,000.0	90.00	179.53	6,101.0	-1,480.04	-4,704.2	254.7	4,709.8	0.00	0.00	0.00
11,100.0	90.00	179.53	6,101.0	-1,480.04	-4,804.2	255.5	4,809.7	0.00	0.00	0.00
11,200.0	90.00	179.53	6,101.0	-1,480.04	-4,904.2	256.3	4,909.7	0.00	0.00	0.00
11,300.0	90.00	179.53	6,101.0	-1,480.03	-5,004.2	257.2	5,009.7	0.00	0.00	0.00
11,400.0	90.00	179.53	6,101.0	-1,480.03	-5,104.2	258.0	5,109.7	0.00	0.00	0.00
11,500.0	90.00	179.53	6,101.0	-1,480.03	-5,204.2	258.8	5,209.6	0.00	0.00	0.00
11,600.0	90.00	179.53	6,101.0	-1,480.03	-5,304.2	259.6	5,309.6	0.00	0.00	0.00
11,700.0	90.00	179.53	6,101.0	-1,480.03	-5,404.2	260.4	5,409.6	0.00	0.00	0.00
11,800.0	90.00	179.53	6,101.0	-1,480.03	-5,504.2	261.3	5,509.6	0.00	0.00	0.00
11,900.0	90.00	179.53	6,101.0	-1,480.03	-5,604.2	262.1	5,609.5	0.00	0.00	0.00
12,000.0	90.00	179.53	6,101.0	-1,480.03	-5,704.2	262.9	5,709.5	0.00	0.00	0.00
12,100.0	90.00	179.53	6,101.0	-1,480.03	-5,804.2	263.7	5,809.5	0.00	0.00	0.00
12,200.0	90.00	179.53	6,101.0	-1,480.03	-5,904.1	264.5	5,909.5	0.00	0.00	0.00
12,300.0	90.00	179.53	6,101.0	-1,480.03	-6,004.1	265.3	6,009.4	0.00	0.00	0.00
12,400.0	90.00	179.53	6,101.0	-1,480.03	-6,104.1	266.2	6,109.4	0.00	0.00	0.00
12,500.0	90.00	179.53	6,101.0	-1,480.03	-6,204.1	267.0	6,209.4	0.00	0.00	0.00
12,600.0	90.00	179.53	6,101.0	-1,480.03	-6,304.1	267.8	6,309.4	0.00	0.00	0.00
12,700.0	90.00	179.53	6,101.0	-1,480.03	-6,404.1	268.6	6,409.3	0.00	0.00	0.00
12,800.0	90.00	179.53	6,101.0	-1,480.03	-6,504.1	269.4	6,509.3	0.00	0.00	0.00
12,900.0	90.00	179.53	6,101.0	-1,480.03	-6,604.1	270.3	6,609.3	0.00	0.00	0.00
13,000.0	90.00	179.53	6,101.0	-1,480.02	-6,704.1	271.1	6,709.3	0.00	0.00	0.00
13,100.0	90.00	179.53	6,101.0	-1,480.02	-6,804.1	271.9	6,809.2	0.00	0.00	0.00
13,200.0	90.00	179.53	6,101.0	-1,480.02	-6,904.1	272.7	6,909.2	0.00	0.00	0.00
13,300.0	90.00	179.53	6,101.0	-1,480.02	-7,004.1	273.5	7,009.2	0.00	0.00	0.00
13,400.0	90.00	179.53	6,101.0	-1,480.02	-7,104.1	274.3	7,109.2	0.00	0.00	0.00
13,500.0	90.00	179.53	6,101.0	-1,480.02	-7,204.1	275.2	7,209.1	0.00	0.00	0.00
13,600.0	90.00	179.53	6,101.0	-1,480.02	-7,304.1	276.0	7,309.1	0.00	0.00	0.00
13,700.0	90.00	179.53	6,101.0	-1,480.02	-7,404.1	276.8	7,409.1	0.00	0.00	0.00
13,800.0	90.00	179.53	6,101.0	-1,480.02	-7,504.1	277.6	7,509.1	0.00	0.00	0.00
13,900.0	90.00	179.53	6,101.0	-1,480.02	-7,604.1	278.4	7,609.0	0.00	0.00	0.00
14,000.0	90.00	179.53	6,101.0	-1,480.02	-7,704.1	279.2	7,709.0	0.00	0.00	0.00
14,100.0	90.00	179.53	6,101.0	-1,480.02	-7,804.1	280.1	7,809.0	0.00	0.00	0.00
14,200.0	90.00	179.53	6,101.0	-1,480.02	-7,904.1	280.9	7,909.0	0.00	0.00	0.00
14,300.0	90.00	179.53	6,101.0	-1,480.01	-8,004.1	281.7	8,008.9	0.00	0.00	0.00
14,400.0	90.00	179.53	6,101.0	-1,480.01	-8,104.1	282.5	8,108.9	0.00	0.00	0.00
14,500.0	90.00	179.53	6,101.0	-1,480.01	-8,204.1	283.3	8,208.9	0.00	0.00	0.00

Planning Report



Database:	EDM 5000.1 Single User Db	Local Co-ordinate Reference:	Well PRONGHORN 21-6-7XRLNB
Company:	BONANZA CREEK ENERGY INC.	TVD Reference:	KB-EST @ 4621.0usft (Original Well Elev)
Project:	WELD COUNTY, COLORADO (NAD 83)	MD Reference:	KB-EST @ 4621.0usft (Original Well Elev)
Site:	NE NW SEC. 6 T5N R61W 6th P.M.	North Reference:	True
Well:	PRONGHORN 21-6-7XRLNB	Survey Calculation Method:	Minimum Curvature
Wellbore:	ORIGINAL WELLBORE		
Design:	PROPOSAL #1		

Planned Survey

MD (usft)	Inc (°)	Azi (°)	TVD (usft)	SS (usft)	+N/-S (usft)	+E/-W (usft)	Vertical Section (usft)	Dogleg Rate (°/100usft)	Build Rate (°/100usft)	Turn Rate (°/100usft)
14,600.0	90.00	179.53	6,101.0	-1,480.01	-8,304.1	284.2	8,308.9	0.00	0.00	0.00
14,700.0	90.00	179.53	6,101.0	-1,480.01	-8,404.1	285.0	8,408.8	0.00	0.00	0.00
14,800.0	90.00	179.53	6,101.0	-1,480.01	-8,504.1	285.8	8,508.8	0.00	0.00	0.00
14,900.0	90.00	179.53	6,101.0	-1,480.01	-8,604.1	286.6	8,608.8	0.00	0.00	0.00
15,000.0	90.00	179.53	6,101.0	-1,480.01	-8,704.1	287.4	8,708.8	0.00	0.00	0.00
15,100.0	90.00	179.53	6,101.0	-1,480.01	-8,804.1	288.2	8,808.7	0.00	0.00	0.00
15,200.0	90.00	179.53	6,101.0	-1,480.01	-8,904.0	289.1	8,908.7	0.00	0.00	0.00
15,300.0	90.00	179.53	6,101.0	-1,480.01	-9,004.0	289.9	9,008.7	0.00	0.00	0.00
15,400.0	90.00	179.53	6,101.0	-1,480.01	-9,104.0	290.7	9,108.7	0.00	0.00	0.00
15,500.0	90.00	179.53	6,101.0	-1,480.00	-9,204.0	291.5	9,208.6	0.00	0.00	0.00
15,600.0	90.00	179.53	6,101.0	-1,480.00	-9,304.0	292.3	9,308.6	0.00	0.00	0.00
15,700.0	90.00	179.53	6,101.0	-1,480.00	-9,404.0	293.1	9,408.6	0.00	0.00	0.00
15,800.0	90.00	179.53	6,101.0	-1,480.00	-9,504.0	294.0	9,508.6	0.00	0.00	0.00
15,900.0	90.00	179.53	6,101.0	-1,480.00	-9,604.0	294.8	9,608.5	0.00	0.00	0.00
BHL - PRONGHORN 21-6-7XRLNB										
15,950.3	90.00	179.53	6,101.0	-1,480.00	-9,654.3	295.2	9,658.8	0.00	0.00	0.00

Plan Annotations

MD (usft)	TVD (usft)	Local Coordinates		Comment
		+N/-S (usft)	+E/-W (usft)	
1,500.0	1,500.0	0.0	0.0	START NUDGE (2°/100ft BUR)
1,844.1	1,843.3	18.2	9.8	EOB TO 6.88° INC
5,249.7	5,224.4	377.6	203.1	END OF TANGENT
5,593.9	5,567.7	395.8	212.9	EOD TO VERTICAL
5,623.9	5,597.7	395.8	212.9	KOP (12°/100ft BUR)
6,248.9	6,058.9	41.9	215.8	START OF TANGENT
6,348.9	6,084.8	-54.7	216.6	END OF TANGENT
6,473.9	6,101.0	-178.2	217.6	7" ICP *NEW* - PRONGHORN 21-6-7XRLNB
15,950.3	6,101.0	-9,654.3	295.2	BHL - PRONGHORN 21-6-7XRLNB