

SE 1/4 OF SECTION 31, TOWNSHIP 8 SOUTH, RANGE 89 WEST OF THE 6TH P.M.

FEDERAL 8-89-31
PITKIN COUNTY
COLORADO

LEASE #COC-66692





WELL NO. 1
2443.34' FSL
1980.94' FEL

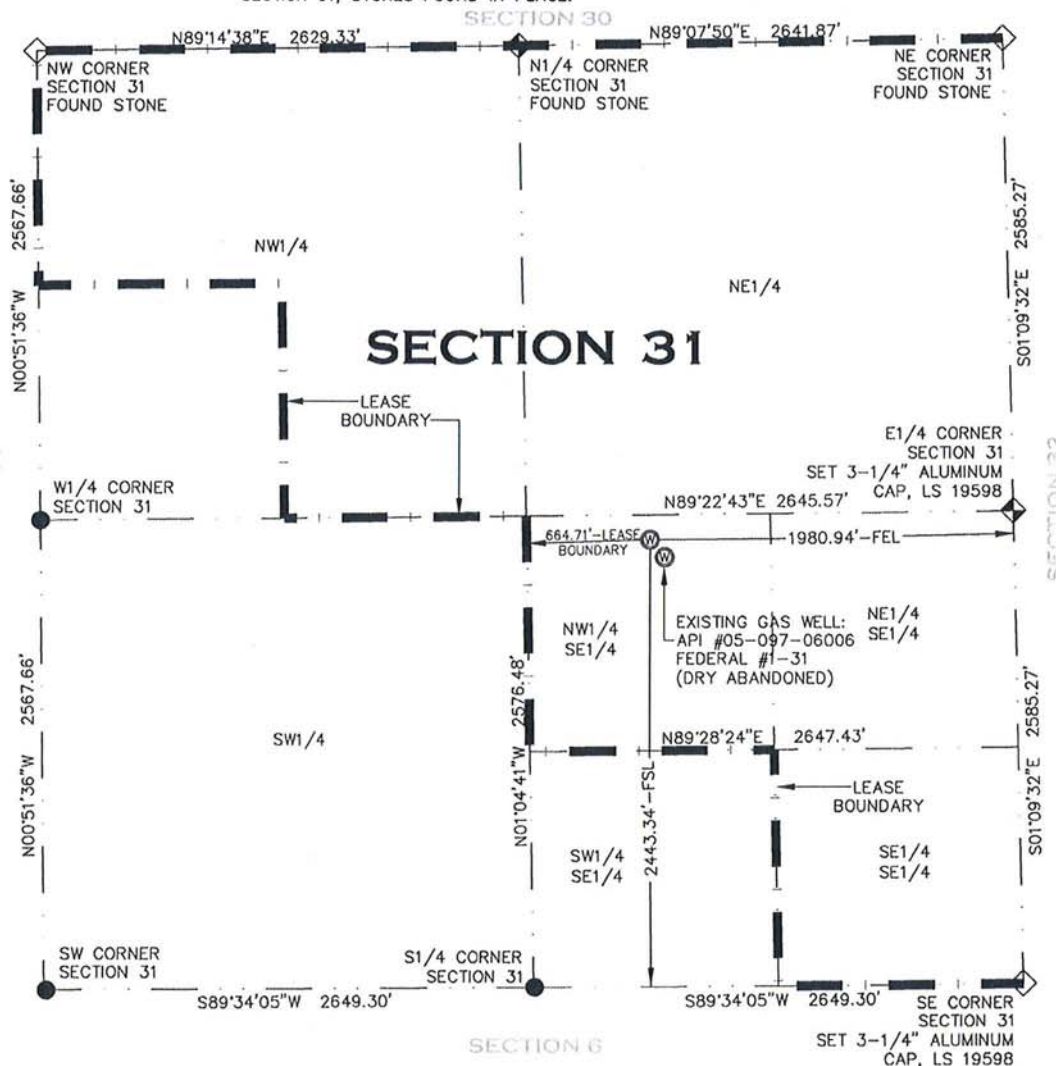
GROUND EL: 9727.0
PAD EL: 9727.0

UTM ZONE 13
(METERS)
NORTHING
4354358.345
EASTING
295782.821

NAD 83
LAT: 39.314544508
LONG: -107.368780389
NAD 27
LAT: 39.314562136
LONG: -107.368172022

LEGEND

-  PROPOSED WELL LOCATION
 FIELD SURVEYED SECTION CORNER
 FIELD SURVEYED QUARTER CORNER
 CALCULATED SECTION CORNER LOCATION



SURVEYOR'S STATEMENT

I, FRANK W. HARRINGTON, DO HEREBY STATE THAT THIS SURVEY WAS PREPARED BY HIGH COUNTRY ENGINEERING, INC. FOR SG INTERESTS, INC., THAT SAID SURVEY WAS PREPARED BY ME OR UNDER MY SUPERVISION AND RESPONSIBLE CHARGE AND THAT IT IS TRUE AND CORRECT TO THE BEST OF MY BELIEF AND KNOWLEDGE. I ALSO CERTIFY THAT THE LOCATION OF THE WELL HAS BEEN STAKED ON THE GROUND AS SHOWN ON THE PLAT.

BY

FRANK W. HARRINGTON, L. \$94099598, Cfed

NOTES:

1. LATITUDES AND LONGITUDES ARE BASED ON NAD83, NGS CONTROL POINTS "ROSEBUD", "Q 158" AND "N 158".
2. ELEVATION BASED ON NAVD OF 1988.
3. WELL MEASUREMENTS ARE 90' FROM SECTION LINES.
4. USGS QUADRANGLE MAP "STONEY RIDGE".
5. CURRENT SURFACE LAND USE: U.S. PUBLIC LANDS.
6. PDOP AT THE TIME OF THE LOCATION OF SURFACE WELL = 1.9.
7. DATE OF FIELD WORK, AUGUST 14, 2012.
8. OPERATOR: BOB WOOD, PLS
9. LOCATION OF WELL AND PAD CORNERS FIELD STAKED ON 11/5/12.

HIGH COUNTRY ENGINEERING, INC.



**1517 BLAKE AVENUE, STE 101
GLENWOOD SPRINGS, CO 81601
PHONE (970) 945-8676
FAX (970) 945-2555**

WWW.HCENG.COM

DRAWN BY:

RPK

CHECKED BY:

FWH

DATE: SEPTEMBER 6, 2012

FILE:
J:/SDSKPROJ/212/1655-02/DWG/1655.02.DWG

SCALE:

$$1'' = 1000'$$

PROJECT NO:

2121655.02

WELL LOCATION PLAT
PREPARED FOR: **SG INTERESTS I, LTD.**

SE 1/4 - SECTION 31
TOWNSHIP 8 SOUTH, RANGE 89 WEST OF 6TH P.M.
PITKIN COUNTY, COLORADO