

K:\ADARKO\2014\2014.107_ADMSON SEC. 21, T2N, R65W\PLATS\ADAMSON 22N-28HZ PLAT.dwg, 2/27/2015, 3:33:40 PM, jake

T2N, R65W

NW. COR.
SEC. 21, T2N, R65W
FOUND 2" ALUM. CAP
L.S. ILLEGIBLE

NE. COR.
SEC. 21, T2N, R65W
FOUND 2 1/2" ALUM. CAP
L.S. 28656

S 89°24'16" W 2625.20' (M)

N 89°59'58" W 2646.10' (M)

N. 1/4 COR.
SEC. 21, T2N, R65W
FOUND 2 1/2" ALUM. CAP
L.S. ILLEGIBLE

SURFACE LOCATION
GROUND ELEVATION= 4891.8'
NAD 83
LATITUDE= 40.123313°
LONGITUDE= -104.673903°

LATITUDE= 40°07'23.928"
LONGITUDE= -104°40'26.049"

BOTTOM HOLE LOCATION
NAD 83
LATITUDE= 40.108787°
LONGITUDE= -104.674650°

LATITUDE= 40°06'31.633"
LONGITUDE= -104°40'28.740"

21

CENTER COR.
SEC. 21, T2N, R65W
FOUND 2 1/2" ALUM. CAP
L.S. 9644

ADAMSON 14N-28HZ
SURFACE LOCATION

W. 1/4 COR.
SEC. 21, T2N, R65W
FOUND 3 1/4" ALUM. CAP
L.S. ILLEGIBLE

E. 1/4 COR.
SEC. 21, T2N, R65W
FOUND 3 1/4" ALUM. CAP
L.S. 26595

SW. COR.
SEC. 21, T2N, R65W
FOUND 3 1/4" ALUM. CAP
L.S. 26595

S. 1/4 COR.
SEC. 21, T2N, R65W
FOUND 3 1/4" ALUM. CAP
L.S. 12330

SE. COR.
SEC. 21, T2N, R65W
FOUND BRASS CAP
L.S. 26595

WELL BORE CONTINUES
INTO SECTION 28

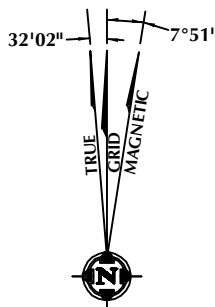
MATCH LINE
SEE SHEET 1B

CERTIFICATE OF SURVEYOR:

THIS IS TO CERTIFY THAT THE ABOVE PLAT WAS PREPARED FROM FIELD NOTES OF ACTUAL SURVEY MADE BY ME OR UNDER MY SUPERVISION AND THAT THE SAME ARE TRUE AND CORRECT TO THE BEST OF MY KNOWLEDGE AND BELIEF. THIS CERTIFICATE DOES NOT REPRESENT A LAND SURVEY PLAT OR IMPROVEMENT SURVEY PLAT AS DEFINED BY C.S. 38-51-102 AND CANNOT BE RELIED UPON TO DETERMINE OWNERSHIP.

Benjamin J. Reenders
BENJAMIN J. REENDERS
PROFESSIONAL LAND SURVEYOR
COLORADO REGISTRATION NUMBER 14306
2/18/15

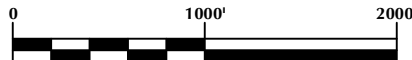
NOTICE:
ACCORDING TO COLORADO STATE LAW YOU MUST COMMENCE ANY LEGAL ACTION BASED UPON ANY DEFECT IN THIS SURVEY WITHIN THREE YEARS AFTER YOU FIRST DISCOVER SUCH DEFECT. IN NO EVENT MAY ANY ACTION BASED UPON ANY DEFECT IN THIS SURVEY BE COMMENCED MORE THAN TEN YEARS FROM THE DATE ON THE CERTIFICATION SHOWN HEREON.



NOTE:
MAGNETIC NORTH IS CURRENT AS OF 1/7/2015.
MAGNETIC NORTH CHANGES WEST 0°06' PER YEAR.

NOTES:

- ▲ INDICATES FOUND SECTION CORNER
- INDICATES CALCULATED CORNER
- ELEVATION BASED ON NAVD88 (GEOID09)
- BASIS OF BEARING DERIVED FROM COLORADO COORDINATE SYSTEM 1983 NORTH ZONE UNLESS OTHERWISE NOTED.
- ALL MEASURED DISTANCES ARE GRID.
COMBINED SCALE FACTOR: .99972882
- OPERATOR: ROB WILSON / PDOP = 1.3
- SEE ADDENDUM TO WELL LOCATION CERTIFICATE FOR EXISTING IMPROVEMENTS WITHIN 500' OF THE WELL PAD.
- WELL FOOTAGES ARE MEASURED AT RIGHT ANGLES TO THE SECTION LINES.
- THE BOTTOM OF HOLE BEARS S01°43'44"W 5296' FROM THE SURFACE LOCATION.



SCALE: 1" = 1000'

WELL PAD - ADAMSON 14N-28HZ

ADAMSON 14N-28HZ
WELL LOCATION CERTIFICATE
2384' FSL & 1262' FWL NWSW (SURFACE)
LOCATED IN SECTION 21
2381' FSL & 1037' FWL NWSW (BOTTOM)
LOCATED IN SECTION 28
T2N, R65W, 6TH P.M.
WELD COUNTY, COLORADO

**Kerr-McGee Oil &
Gas Onshore L.P.**
1099 18th Street
Denver, Colorado 80202



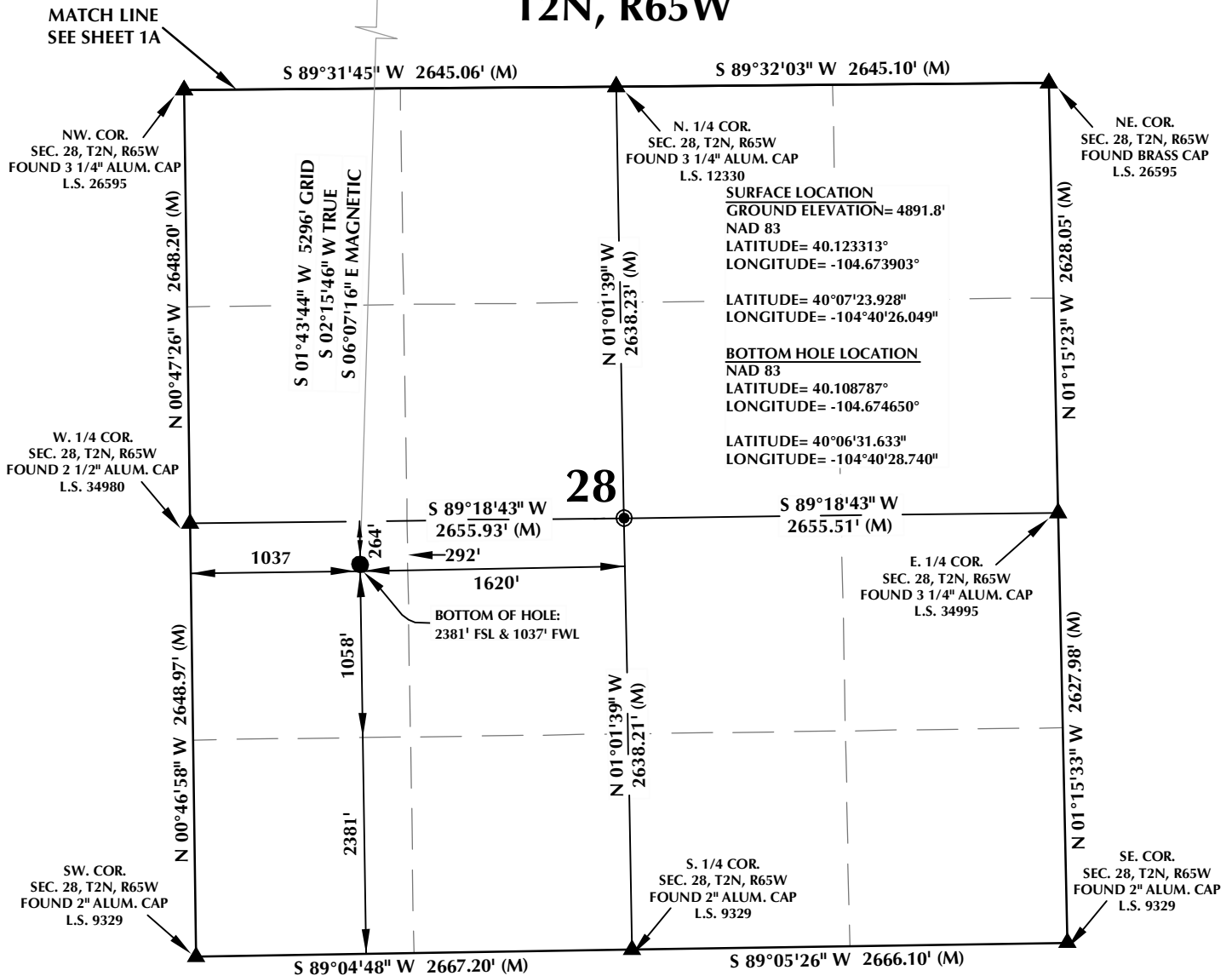
CONSULTING, LLC

SHERIDAN OFFICE
1095 Saberton Avenue
Sheridan, Wyoming 82801
Phone 307-674-0609

LOVELAND OFFICE
1635 Foxtrail Drive, Suite 204
Loveland, Colorado 80538
Phone 970-776-4331

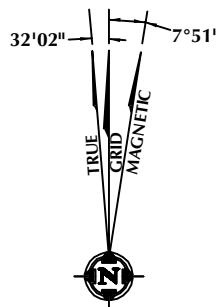
DRAFTED BY:	MDZ	CHECKED BY:	BJR	SHEET NO:
DATE DRAFTED:	2/18/15	DATE SURVEYED:	12/5/14	1A
REVISED:		FILE NAME:	14-107	1A OF 1

T2N, R65W



NOTES:

- ▲ INDICATES FOUND SECTION CORNER
- INDICATES CALCULATED CORNER
- ELEVATION BASED ON NAVD88 (GEOID09)
- BASIS OF BEARING DERIVED FROM COLORADO COORDINATE SYSTEM 1983 NORTH ZONE UNLESS OTHERWISE NOTED.
- ALL MEASURED DISTANCES ARE GRID.
COMBINED SCALE FACTOR: .99972882
- OPERATOR: ROB WILSON / PDOP = 1.3
- SEE ADDENDUM TO WELL LOCATION CERTIFICATE FOR EXISTING IMPROVEMENTS WITHIN 500' OF THE WELL PAD.
- WELL FOOTAGES ARE MEASURED AT RIGHT ANGLES TO THE SECTION LINES.
- THE BOTTOM OF HOLE BEARS S01°43'44"W 5296' FROM THE SURFACE LOCATION.



NOTE:
MAGNETIC NORTH IS CURRENT AS OF 1/7/2015.
MAGNETIC NORTH CHANGES WEST 0°06' PER YEAR.



SCALE: 1" = 1000'

CERTIFICATE OF SURVEYOR:

THIS IS TO CERTIFY THAT THE ABOVE PLAT WAS PREPARED FROM FIELD NOTES OF ACTUAL SURVEY MADE BY ME OR UNDER MY SUPERVISION AND THAT THE SAME ARE TRUE AND CORRECT TO THE BEST OF MY KNOWLEDGE AND BELIEF. THIS CERTIFICATE DOES NOT REPRESENT A LAND SURVEY PLAT OR IMPROVEMENT SURVEY PLAT AS DEFINED BY C.S. 38-51-102 AND CANNOT BE RELIED UPON TO DETERMINE OWNERSHIP.

Benjamin J. Reenders

BENJAMIN J. REENDERS
PROFESSIONAL LAND SURVEYOR
COLORADO REGISTRATION NUMBER 14336

NOTICE:
ACCORDING TO COLORADO STATE LAW YOU MUST COMMENCE ANY LEGAL ACTION BASED UPON ANY DEFECT IN THIS SURVEY WITHIN THREE YEARS AFTER YOU FIRST DISCOVER SUCH DEFECT. IN NO EVENT MAY ANY ACTION BASED UPON ANY DEFECT IN THIS SURVEY BE COMMENCED MORE THAN TEN YEARS FROM THE DATE ON THE CERTIFICATION SHOWN HEREON.

WELL PAD - ADAMSON 14N-28HZ

ADAMSON 14N-28HZ
WELL LOCATION CERTIFICATE
2384' FSL & 1262' FWL NWSW (SURFACE)
LOCATED IN SECTION 21
2381' FSL & 1037' FWL NWSW (BOTTOM)
LOCATED IN SECTION 28
T2N, R65W, 6TH P.M.
WELD COUNTY, COLORADO

Kerr-McGee Oil & Gas Onshore L.P.
1099 18th Street
Denver, Colorado 80202

CONSULTING, LLC

SHERIDAN OFFICE
1095 Saberton Avenue
Sheridan, Wyoming 82801
Phone 307-674-0609

LOVELAND OFFICE
1635 Foxtrail Drive, Suite 204
Loveland, Colorado 80538
Phone 970-776-4331

DRAFTED BY:	MDZ	CHECKED BY:	BJR	SHEET NO:
DATE DRAFTED:	2/18/15	DATE SURVEYED:	12/5/14	1B
REVISED:		FILE NAME:	14-107	1B OF 1

K:\ADAMSON\2014\14-107 ADAMSON SEC. 21, T2N, R65W\PLATS\ADAMSON 22N-28HZ PLAT.dwg, 2/27/2015, 3:34:05 PM, jake