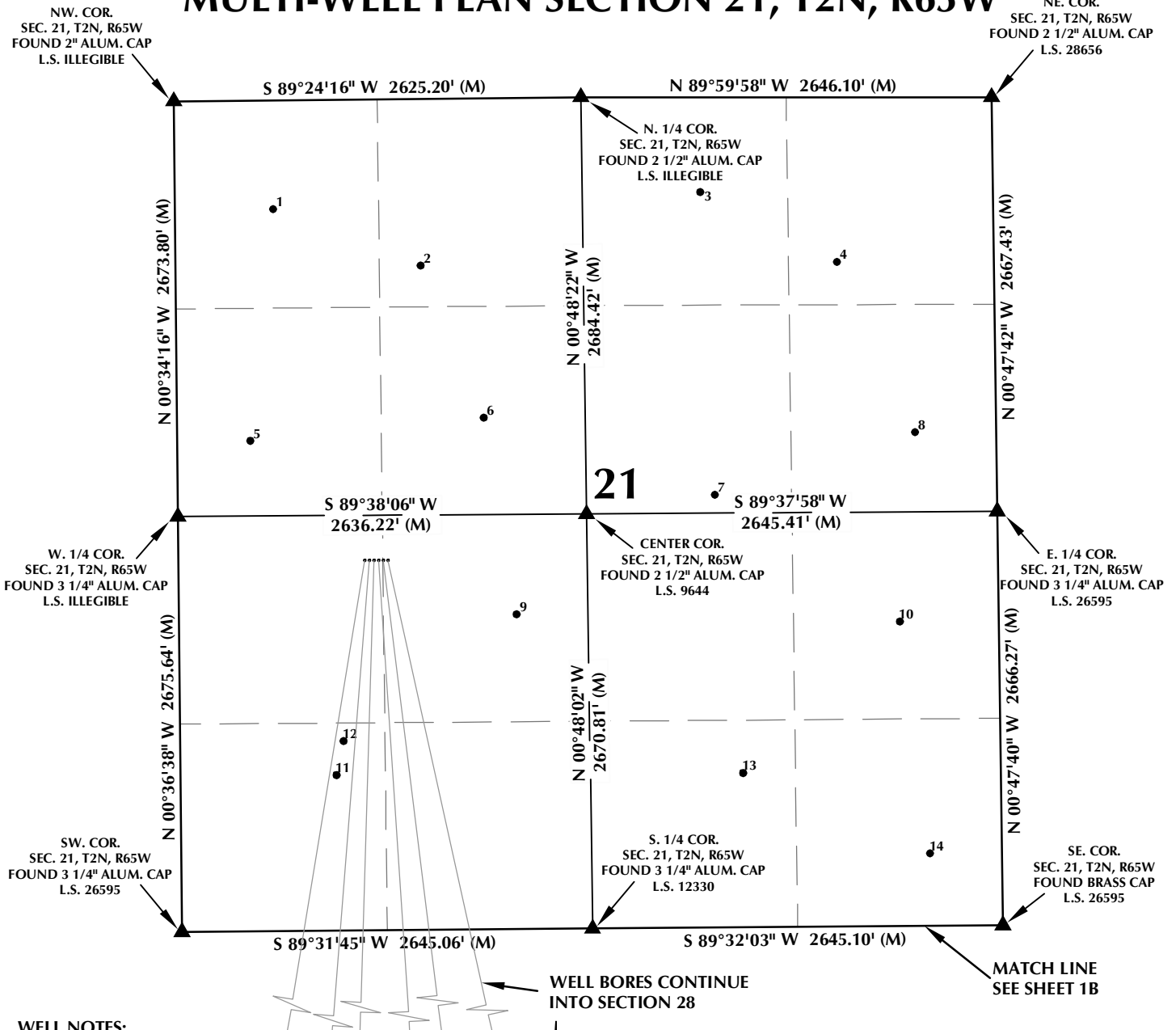


MULTI-WELL PLAN SECTION 21, T2N, R65W



WELL NOTES:

ADAMSON 13N-28HZ
SURFACE: 2384' FSL, 1202' FWL
BOTTOM HOLE: 2380' FSL, 265' FWL

ADAMSON 35C-28HZ
SURFACE: 2384' FSL, 1232' FWL
BOTTOM HOLE: 2379' FSL, 748' FWL

ADAMSON 14N-28HZ
SURFACE: 2384' FSL, 1262' FWL
BOTTOM HOLE: 2381' FSL, 1037' FWL

ADAMSON 36N-28HZ
SURFACE: 2383' FSL, 1292' FWL
BOTTOM HOLE: 2380' FSL, 1574' FWL

ADAMSON 37C-28HZ
SURFACE: 2383' FSL, 1322' FWL
BOTTOM HOLE: 2381' FSL, 1908' FWL

ADAMSON 28N-28HZ
SURFACE: 2383' FSL, 1352' FWL
BOTTOM HOLE: 2420' FSL, 2443' FWL

NOTES:

- ▲ INDICATES FOUND SECTION CORNER
- INDICATES CALCULATED CORNER
- BASIS OF BEARING DERIVED FROM COLORADO COORDINATE SYSTEM 1983 NORTH ZONE UNLESS OTHERWISE NOTED.
- ALL MEASURED DISTANCES ARE GRID.
- COMBINED SCALE FACTOR: .99972882
- WELL FOOTAGES ARE MEASURED AT RIGHT ANGLES TO THE SECTION LINES.

WELL PAD - ADAMSON 14N-28HZ

MULTI-WELL PLAN
ADAMSON 13N-28HZ, ADAMSON 35C-28HZ,
ADAMSON 14N-28HZ, ADAMSON 36N-28HZ,
ADAMSON 37C-28HZ & ADAMSON 28N-28HZ
LOCATED IN SECTIONS 21 & 28
T2N, R65W, 6TH P.M.
WELD COUNTY, COLORADO

**Kerr-McGee Oil &
Gas Onshore L.P.**
1099 18th Street
Denver, Colorado 80202



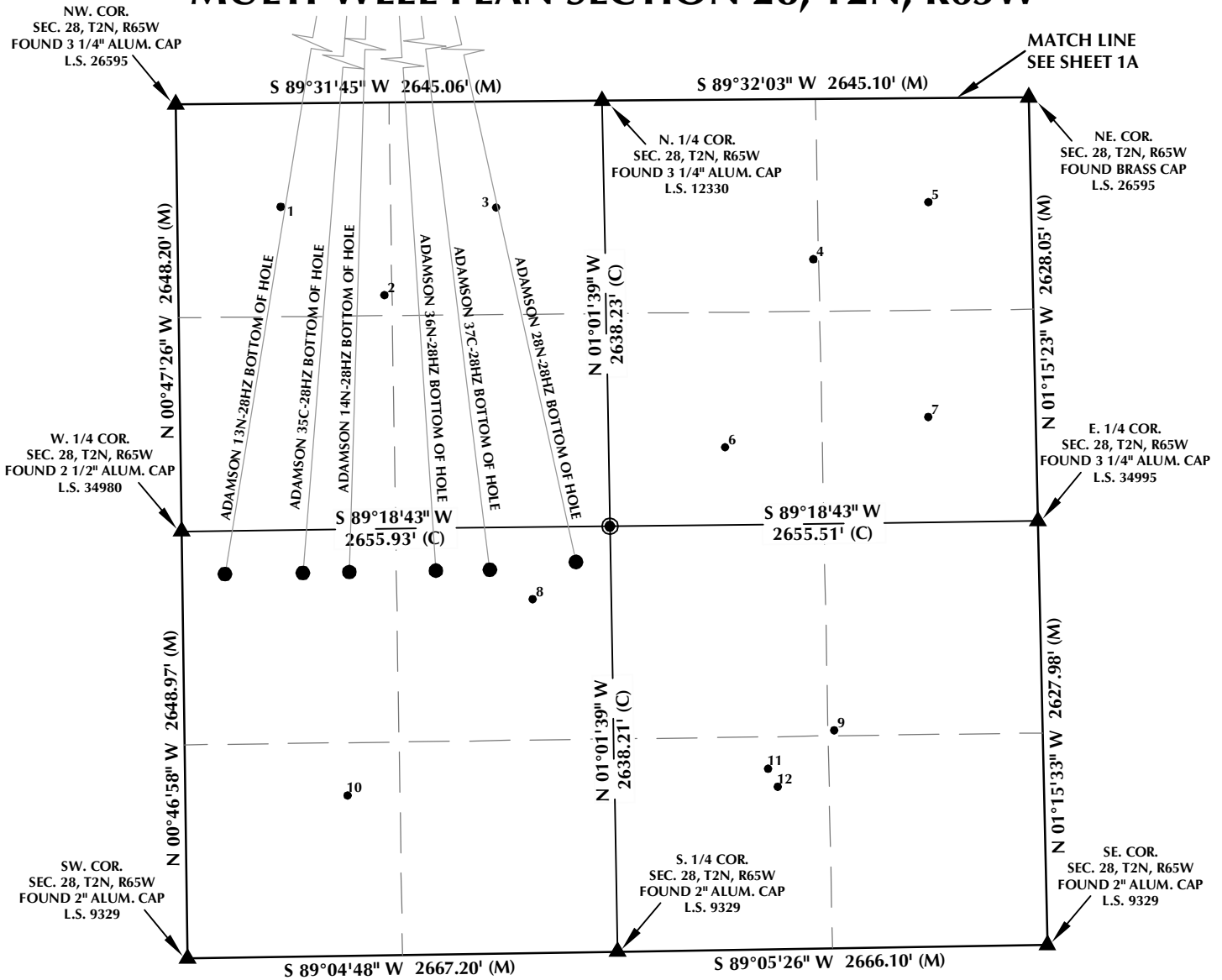
CONSULTING, LLC

SHERIDAN OFFICE
1095 Saberton Avenue
Sheridan, Wyoming 82801
Phone 307-674-0609

LOVELAND OFFICE
1635 Foxtrail Drive, Suite 204
Loveland, Colorado 80538
Phone 970-776-4331

DRAFTED BY:	LMO	CHECKED BY:	BJR	SHEET NO:
DATE DRAFTED:	2/24/15	DATE SURVEYED:	12/5/14	1A
REVISED:		FILE NAME:	14-107	1A OF 2

MULTI-WELL PLAN SECTION 28, T2N, R65W



WELL NOTES:

ADAMSON 13N-28HZ
SURFACE: 2384' FSL, 1202' FWL
BOTTOM HOLE: 2380' FSL, 265' FWL

ADAMSON 35C-28HZ
SURFACE: 2384' FSL, 1232' FWL
BOTTOM HOLE: 2379' FSL, 748' FWL

ADAMSON 14N-28HZ
SURFACE: 2384' FSL, 1262' FWL
BOTTOM HOLE: 2381' FSL, 1037' FWL

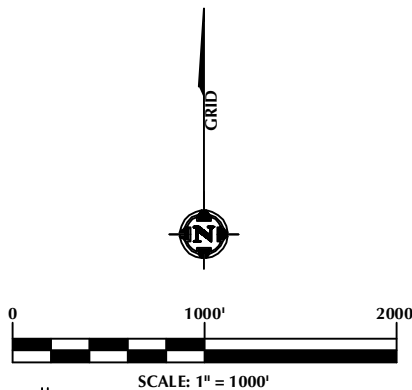
ADAMSON 36N-28HZ
SURFACE: 2383' FSL, 1292' FWL
BOTTOM HOLE: 2380' FSL, 1574' FWL

ADAMSON 37C-28HZ
SURFACE: 2383' FSL, 1322' FWL
BOTTOM HOLE: 2381' FSL, 1908' FWL

ADAMSON 28N-28HZ
SURFACE: 2383' FSL, 1352' FWL
BOTTOM HOLE: 2420' FSL, 2443' FWL

NOTES:

1. ▲ INDICATES FOUND SECTION CORNER
2. ● INDICATES CALCULATED CORNER
3. BASIS OF BEARING DERIVED FROM COLORADO COORDINATE SYSTEM 1983 NORTH ZONE UNLESS OTHERWISE NOTED.
4. ALL MEASURED DISTANCES ARE GRID.
5. COMBINED SCALE FACTOR: .99972882
6. WELL FOOTAGES ARE MEASURED AT RIGHT ANGLES TO THE SECTION LINES.



WELL PAD - ADAMSON 14N-28HZ

MULTI-WELL PLAN
ADAMSON 13N-28HZ, ADAMSON 35C-28HZ,
ADAMSON 14N-28HZ, ADAMSON 36N-28HZ,
ADAMSON 37C-28HZ & ADAMSON 28N-28HZ
LOCATED IN SECTIONS 21 & 28
T2N, R65W, 6TH P.M.
WELD COUNTY, COLORADO

**Kerr-McGee Oil &
Gas Onshore L.P.**
1099 18th Street
Denver, Colorado 80202



CONSULTING, LLC

SHERIDAN OFFICE
1095 Saberton Avenue
Sheridan, Wyoming 82801
Phone 307-674-0609

LOVELAND OFFICE
1635 Foxtrail Drive, Suite 204
Loveland, Colorado 80538
Phone 970-776-4331

DRAFTED BY:	LMO	CHECKED BY:	BJR	SHEET NO:
DATE DRAFTED:	2/24/15	DATE SURVEYED:	12/5/14	1B
REVISED:		FILE NAME:	14-107	1B OF 2

MULTI-WELL PLAN SECTION 21, T2N, R65W

NUMBER	WELL NAME	API NUMBER	LATITUDE (NAD 83)	LONGITUDE (NAD 83)	SURFACE ELEVATION	TOTAL DEPTH
1	MEGUIRE X 21-04	05-123-25863	40.129537	-104.676150	4894.4	7831
2	MEGUIRE 21-3P	05-123-16300	40.128515	-104.672762	4890.1	8032
3	ARENDS X 21-02	05-123-25916	40.129767	-104.666305	4889.5	8050
4	HALLER 41-21	05-123-07401	40.128510	-104.663170	4886.3	7760
5	MEGUIRE X 21-5 JI	05-123-20156	40.125447	-104.676724	4898.3	7826
6	MEGUIRE X 21-06	05-123-25862	40.125816	-104.671339	4890.8	7834
7	HALLER X 21-7JI	05-123-22982	40.124414	-104.666033	4887.2	8010
8	ARENDS X 21-08	05-123-27027	40.125489	-104.661406	4890.7	8065
9	ADAMSON 11-21A	05-123-20897	40.122332	-104.670630	4895.9	7996
10	ARENDS X 21-09	05-123-25915	40.122145	-104.661797	4894.2	8060
11	ERNIE F ADAMSON GAS UNIT 1	05-123-08288	40.119524	-104.674812	4896.7	7057
12	ADAMSON ERNIE F GU 1X	05-123-08327	40.120122	-104.674641	4895.9	7830
13	HALLER 34-21	05-123-09948	40.119491	-104.665441	4897.8	7798
14	HALLER 44-21	05-123-21253	40.118038	-104.661150	4889.4	8000

NOTES:

- * INDICATES EXISTING WELLS THAT WERE NOT SURVEYED BUT DERIVED FROM COLORADO OIL AND GAS CONSERVATION COMMISSION (COGCC).

**EXISTING WELL EXHIBIT
SECTION 21, T2N, R65W, 6TH P.M.
WELD COUNTY, COLORADO**

**Kerr-McGee Oil &
Gas Onshore L.P.
1099 18th Street
Denver, Colorado 80202**



CONSULTING, LLC

SHERIDAN OFFICE
1095 Saberton Avenue
Sheridan, Wyoming 82801
Phone 307-674-0609

LOVELAND OFFICE
1635 Foxtrail Drive, Suite 204
Loveland, Colorado 80538
Phone 970-776-4331

DRAFTED BY: LMO

CHECKED BY: BJR

SHEET NO:

DATE DRAFTED: 2/24/15

DATE SURVEYED: 12/5/14

2A

REVISED:

FILE NAME: 14-107

2A OF 2

MULTI-WELL PLAN SECTION 28, T2N, R65W

NUMBER	WELL NAME	API NUMBER	LATITUDE (NAD 83)	LONGITUDE (NAD 83)	SURFACE ELEVATION	TOTAL DEPTH
1	ROLAND X 28-4	05-123-25349	40.115010	-104.676082	4901.8	7841
2	ARNDT 28-4P	05-123-16299	40.113480	-104.673807	4898.9	8070
3	ROLAND X 28-3	05-123-25348	40.114959	-104.671312	4901.8	7830
4	*DEKALB 1	05-123-07946	40.114033	-104.664288	4895.2	7810
5	ALLEN X 28-01	05-123-26952	40.114989	-104.661723	4909.7	7379
6	*WHITTEMORE 7-28A	05-123-21425	40.110849	-104.666270	4899.0	7823
7	ALLEN X 28-08	05-123-26954	40.111326	-104.661773	4903.0	7385
8	HSR-ROLAND 11-28A	05-123-19558	40.108262	-104.670572	4898.9	7850
9	*DEKALB 2	05-123-10645	40.106014	-104.663935	4910.2	7866
10	MARY D ARNDT 1	05-123-08198	40.104981	-104.674740	4900.2	7950
11	ALLEN 9-28A	05-123-20991	40.105376	-104.665404	4901.0	8079
12	*HSR-DEKALB 2A	05-123-19452	40.105063	-104.665195	4901.6	7970

NOTES:

- * INDICATES EXISTING WELLS THAT WERE NOT SURVEYED BUT DERIVED FROM COLORADO OIL AND GAS CONSERVATION COMMISSION (COGCC).

**EXISTING WELL EXHIBIT
SECTION 28, T2N, R65W, 6TH P.M.
WELD COUNTY, COLORADO**

**Kerr-McGee Oil &
Gas Onshore L.P.**
1099 18th Street
Denver, Colorado 80202



CONSULTING, LLC

SHERIDAN OFFICE
1095 Saberton Avenue
Sheridan, Wyoming 82801
Phone 307-674-0609

LOVELAND OFFICE
1635 Foxtrail Drive, Suite 204
Loveland, Colorado 80538
Phone 970-776-4331

DRAFTED BY:	LMO	CHECKED BY:	BJR	SHEET NO: 2B 2B OF 2
DATE DRAFTED:	2/24/15	DATE SURVEYED:	12/5/14	
REVISED:		FILE NAME:	14-107	