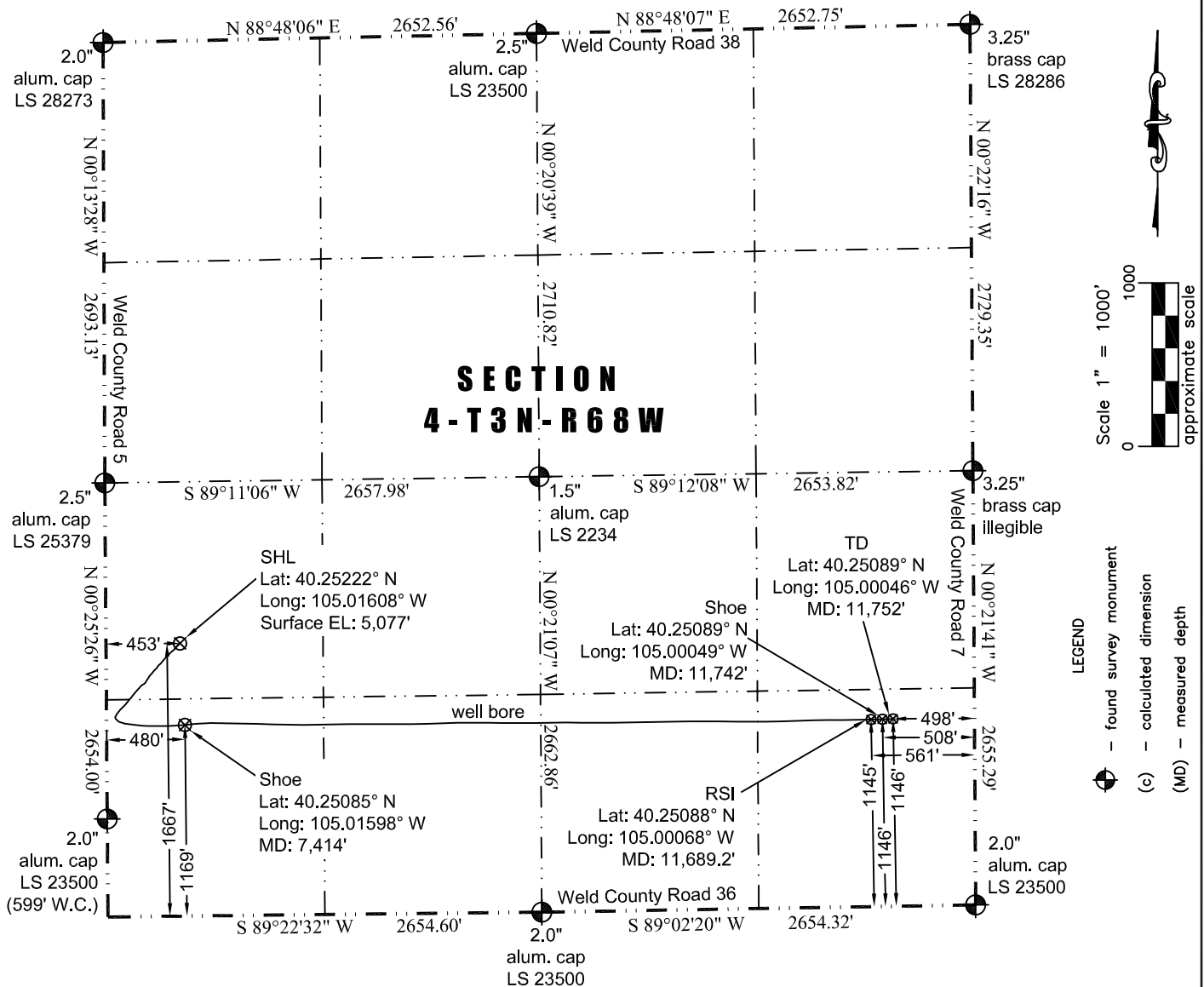




Washburn Land Surveying  
www.WashburnSurveying.com  
970-232-9645

# WELL BORE PLAT

Minch 3E-4H-L368



## Notes:

- 1) Bearings and distances based on NAD 83 Colorado North State Plane Coordinates.
- 2) Conversion factor to ground (1.0002811815).
- 3) Elevations based on NAVD 88 GPS heights and Geoid 2009 corrections.
- 4) Well Bore Data supplied by operator.
- 5) This document is for review purposes only.
- 6) Drawing prepared 12/29/2014.

I hereby certify that this Well Bore Plat was prepared by me or under my direct supervision on 1/5/2015 for and on behalf of EnCana Oil & Gas (USA) Inc. That it is not a Land Survey Plat or an Improvement Survey Plat and that it is not to be relied upon for establishment of fences, buildings, or other future improvement lines.

John Robert McGehee LS#38219  
Well: Minch 3E-4H-L368