



Kerr-McGee Oil & Gas Onshore LP

A subsidiary of Anadarko Petroleum Corporation

1099 18th Street
Denver, CO 80202
720-929-6000

May 4, 2015

Matt Lepore
Director, Colorado Oil and Gas Conservation Commission
Department of Natural Resources
The Chancery Building
1120 Lincoln Street, Suite 801
Denver, CO 80203

Re: **30 Day Certification Letter - 318A.e**
TEDFORD 3N-28HZ (Doc # 400804145)
Township 2 North, Range 66 West
Section 28: SWSW
Unit Acreage: 240
Unit Spacing: 2N-66W-21: SESW; 28: E2W2; 33: NENW
Weld County, Colorado

Dear Mr. Lepore:

Kerr-McGee Oil and Gas Onshore LP ("KMG") hereby certifies that a thirty (30) day notice has been given by certified mail to all mineral owners in the proposed wellbore spacing unit. We have not received any objections to such well location, proposed spacing unit, or additional producing formation. KMG hereby respectfully requests approval of this boundary well.

If you have any questions or issues regarding this permit, please contact Cheryl Light at (720) 929-6461.

Very truly yours,

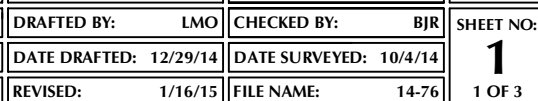
Kerr-McGee Oil and Gas Onshore LP

A blue ink signature of Craig Richardson, consisting of a stylized 'C' followed by a horizontal line.

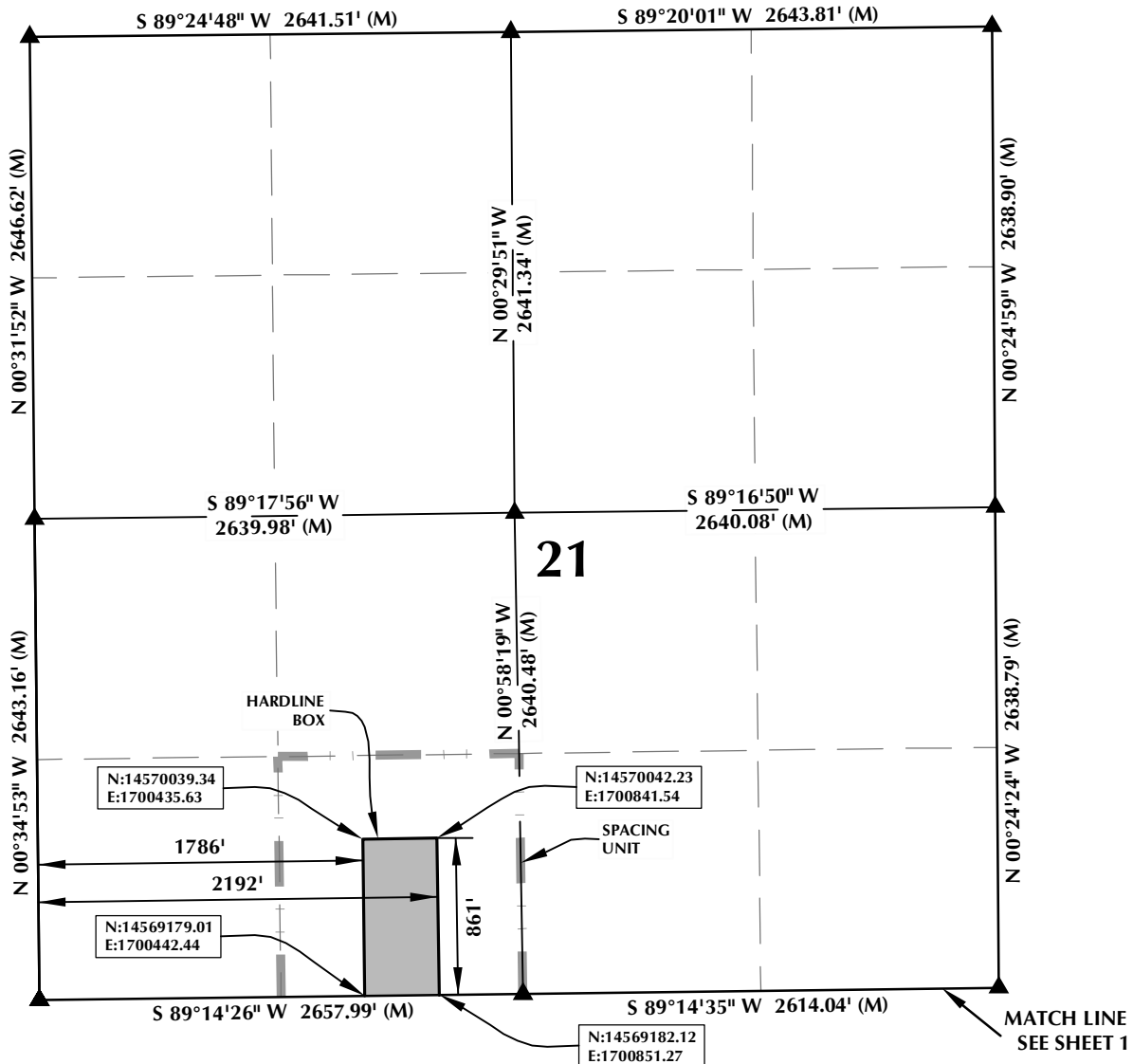
Craig Richardson
Regulatory Analyst II

Enclosure

K:\ANADARKO\2014\2014 76 TEDFORD SEC 28 T2N R66W\PLATS\HARDLINES\TEDFORD 3N-28HZ HARDLINE.dwg, 1/16/2015 11:08:27 AM, lisa



SPACING UNIT: TEDFORD 3N-28HZ T2N, R66W



HEEL LOCATION
N: 14,563,892.58'
E: 1,700,547.85'

LATITUDE= 40.101846°
LONGITUDE= -104.784965°

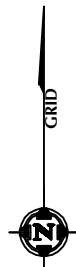
LATITUDE= 40°06'06.644"
LONGITUDE= -104°47'05.874"

AVAILABLE FOOTAGE
7009'

BOTTOM HOLE LOCATION
N: 14,569,178.55'
E: 1,700,480.43'

LATITUDE= 40.116362°
LONGITUDE= -104.785161°

LATITUDE= 40°06'58.903"
LONGITUDE= -104°47'06.578"



SCALE: 1" = 1000'

NOTES:

1. ▲ INDICATES FOUND SECTION CORNER
2. ● INDICATES CALCULATED CORNER
3. BASIS OF BEARING DERIVED FROM COLORADO COORDINATE SYSTEM 1983 NORTH ZONE UNLESS OTHERWISE NOTED.
4. DRAWING NORTHING / EASTING COORDINATES ARE BASED ON COLORADO COORDINATE SYSTEM 1983 NORTH ZONE UNLESS OTHERWISE NOTED.
5. COMBINED SCALE FACTOR: .99972633
6. N / E COORDINATES ARE BASED ON UTM COORDINATE SYSTEM NAD83, ZONE 13
7. THIS EXHIBIT DOES NOT REPRESENT A LAND SURVEY PLAT OR IMPROVEMENT SURVEY PLAT AS DEFINED BY C.R.S. 38-51-102 AND CANNOT BE RELIED UPON TO DETERMINE OWNERSHIP.

WELL PAD - TEDFORD 29C-28HZ

TEDFORD 3N-28HZ
SPACING UNIT EXHIBIT
1' FSL & 1866' FWL SESW (HEEL)
1' FNL & 1827' FWL NENW (BOTTOM)
LOCATED IN SECTION 28
T2N, R66W, 6TH P.M.
WELD COUNTY, COLORADO

**Kerr-McGee Oil &
Gas Onshore L.P.**
1099 18th Street
Denver, Colorado 80202



CONSULTING, LLC

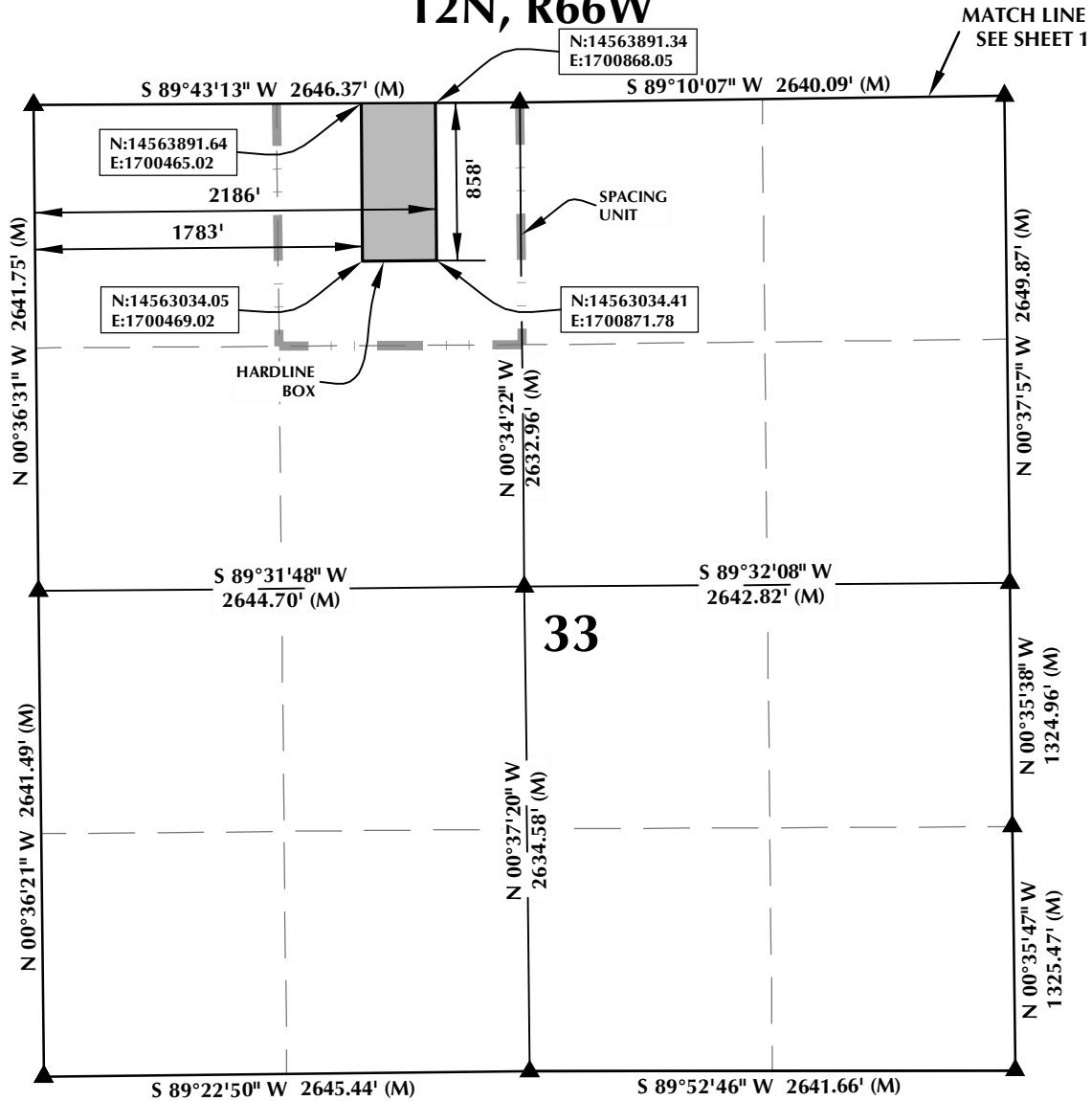
SHERIDAN OFFICE
2155 North Main Street
Sheridan, Wyoming 82801
Phone 307-674-0609

LOVELAND OFFICE
1635 Foxtrail Drive, Suite 204
Loveland, Colorado 80538
Phone 970-776-4331

DRAFTED BY:	LMO	CHECKED BY:	BJR	SHEET NO:
DATE DRAFTED:	12/29/14	DATE SURVEYED:	10/4/14	2
REVISED:	1/16/15	FILE NAME:	14-76	2 OF 3

SPACING UNIT: TEDFORD 3N-28HZ

T2N, R66W



HEEL LOCATION
N: 14,563,892.58'
E: 1,700,547.85'

LATITUDE= 40.101846°
LONGITUDE= -104.784965°

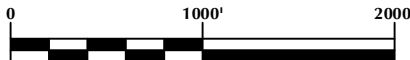
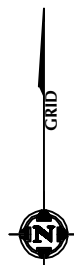
LATITUDE= 40°06'06.644\"/>
LONGITUDE= -104°47'05.874"

AVAILABLE FOOTAGE
7009'

BOTTOM HOLE LOCATION
N: 14,569,178.55'
E: 1,700,480.43'

LATITUDE= 40.116362°
LONGITUDE= -104.785161°

LATITUDE= 40°06'58.903\"/>
LONGITUDE= -104°47'06.578"



SCALE: 1" = 1000'

NOTES:

1. ▲ INDICATES FOUND SECTION CORNER
2. ● INDICATES CALCULATED CORNER
3. BASIS OF BEARING DERIVED FROM COLORADO COORDINATE SYSTEM 1983 NORTH ZONE UNLESS OTHERWISE NOTED.
4. DRAWING NORTHING / EASTING COORDINATES ARE BASED ON COLORADO COORDINATE SYSTEM 1983 NORTH ZONE UNLESS OTHERWISE NOTED.
5. COMBINED SCALE FACTOR: .99972633
6. N / E COORDINATES ARE BASED ON UTM COORDINATE SYSTEM NAD83, ZONE 13
7. THIS EXHIBIT DOES NOT REPRESENT A LAND SURVEY PLAT OR IMPROVEMENT SURVEY PLAT AS DEFINED BY C.R.S. 38-51-102 AND CANNOT BE RELIED UPON TO DETERMINE OWNERSHIP.

WELL PAD - TEDFORD 29C-28HZ

**TEDFORD 3N-28HZ
SPACING UNIT EXHIBIT**
1' FSL & 1866' FWL SESW (HEEL)
1' FNL & 1827' FWL NENW (BOTTOM)
LOCATED IN SECTION 28
T2N, R66W, 6TH P.M.
WELD COUNTY, COLORADO

**Kerr-McGee Oil &
Gas Onshore L.P.**
1099 18th Street
Denver, Colorado 80202



CONSULTING, LLC

SHERIDAN OFFICE
2155 North Main Street
Sheridan, Wyoming 82801
Phone 307-674-0609

LOVELAND OFFICE
1635 Foxtrail Drive, Suite 204
Loveland, Colorado 80538
Phone 970-776-4331

DRAFTED BY:	LMO	CHECKED BY:	BJR	SHEET NO:
DATE DRAFTED:	12/29/14	DATE SURVEYED:	10/4/14	3
REVISED:	1/16/15	FILE NAME:	14-76	3 OF 3