



# Kerr-McGee Oil & Gas Onshore LP

A subsidiary of Anadarko Petroleum Corporation

1099 18<sup>th</sup> Street  
Denver, CO 80202  
720-929-6000

May 4, 2015

Matt Lepore  
Director, Colorado Oil and Gas Conservation Commission  
Department of Natural Resources  
The Chancery Building  
1120 Lincoln Street, Suite 801  
Denver, CO 80203

Re: **30 Day Certification Letter - 318A.e**  
TEDFORD 30C-28HZ (Doc # 400804483)  
Township 2 North, Range 66 West  
Section 28: SWSW  
Unit Acreage: 480  
Unit Spacing: 2N-66W-20: SESE; 21: SWSW; 28: W2W2;  
29: E2E2; 32: NENE; 33: NWNW  
Weld County, Colorado

Dear Director Lepore:

Kerr McGee Oil and Gas Onshore LP ("KMG") hereby certifies that KMG owns one hundred percent (100%) of the leasehold interest in the mineral rights in the proposed spacing unit. KMG hereby respectfully requests approval of this boundary well.

If you have any questions or issues regarding this permit, please contact Cheryl Light at (720) 929-6461.

Sincerely,

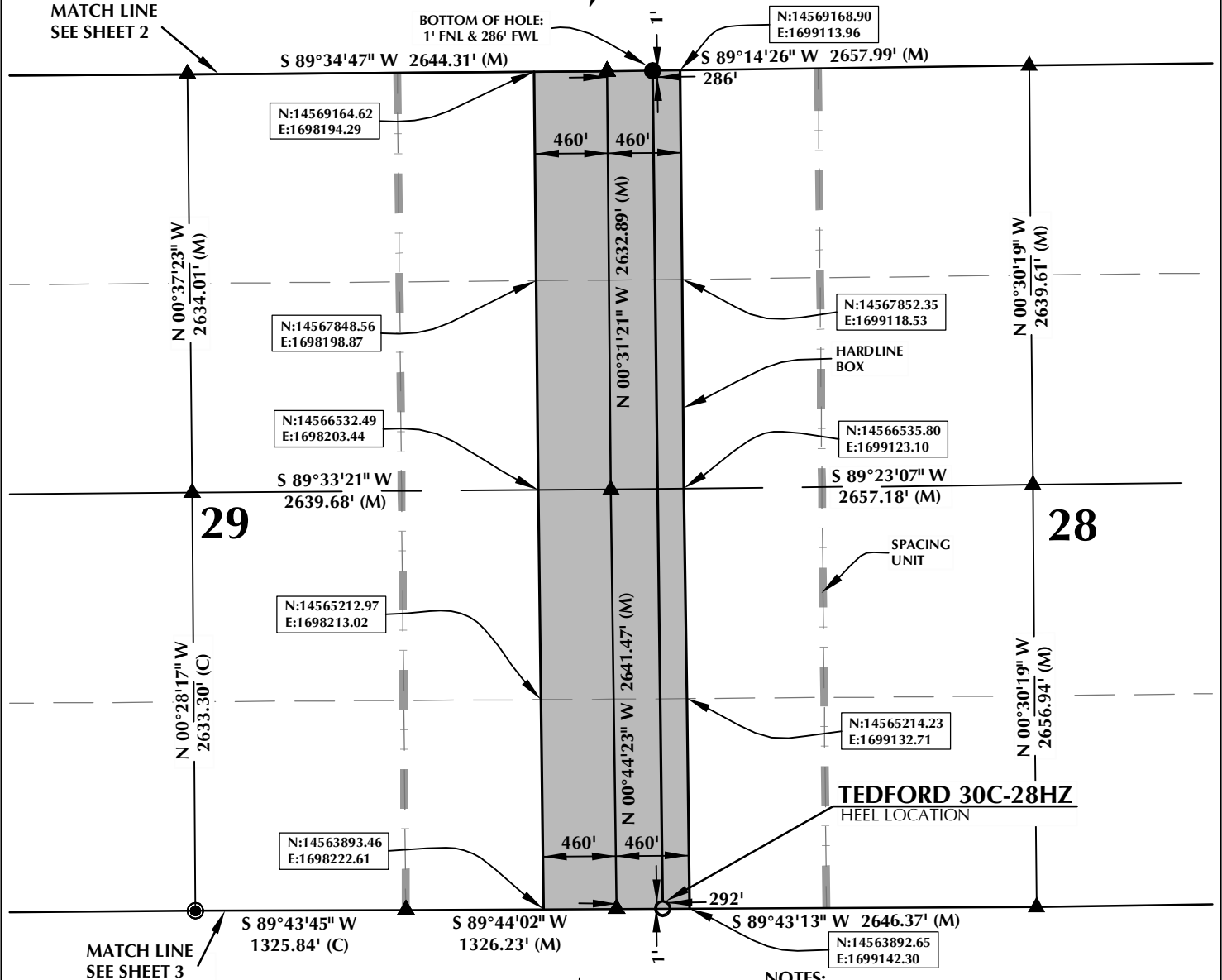
**Kerr-McGee Oil and Gas Onshore LP**

A blue ink signature of Craig Richardson, consisting of a stylized 'C' followed by a horizontal line.

Craig Richardson  
Regulatory Analyst II

Enclosure

# SPACING UNIT: TEDFORD 30C-28HZ T2N, R66W



## WELL PAD - TEDFORD 29C-28HZ

**TEDFORD 30C-28HZ  
SPACING UNIT EXHIBIT**  
1' FSL & 292' FWL SWSW (HEEL)  
1' FNL & 286' FWL NWNW (BOTTOM)  
LOCATED IN SECTION 28  
T2N, R66W, 6TH P.M.  
WELD COUNTY, COLORADO

**Kerr-McGee Oil &  
Gas Onshore L.P.**  
1099 18th Street  
Denver, Colorado 80202



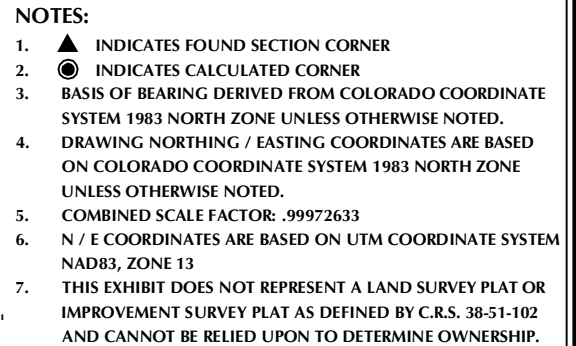
## CONSULTING, LLC

**SHERIDAN OFFICE**  
2155 North Main Street  
Sheridan, Wyoming 82801  
Phone 307-674-0609

**LOVELAND OFFICE**  
1635 Foxtrail Drive, Suite 204  
Loveland, Colorado 80538  
Phone 970-776-4331

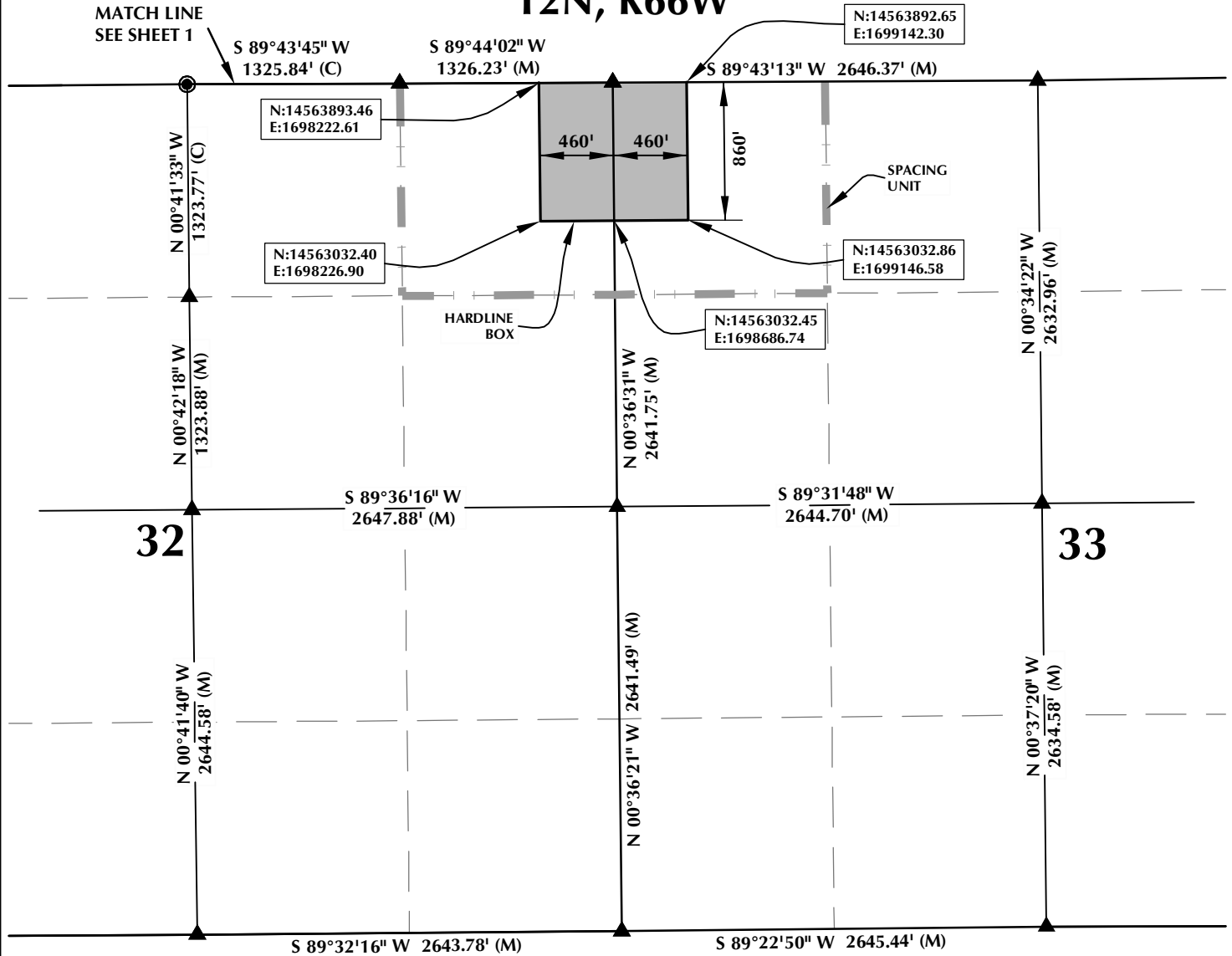
DRAFTED BY:	LMO	CHECKED BY:	BJR	SHEET NO:
DATE DRAFTED:	12/29/14	DATE SURVEYED:	10/4/14	1
REVISED:	1/16/15	FILE NAME:	14-76	1 OF 3

\\ANADARKO\2014\2014\_76\_TEDFORD\_SEC 28\_T2N\_R66W\PLATS\HARDLINES\TEDFORD 30C-28HZ HARDLINE.dwg, 1/16/2015 11:03:53 AM, lisa



DRAFTED BY: LMO	CHECKED BY: BJR	SHEET NO: <div style="font-size: 2em; font-weight: bold; text-align: center;">2</div> 2 OF 3
DATE DRAFTED: 12/29/14	DATE SURVEYED: 10/4/14	
REVISED: 1/16/15	FILE NAME: 14-76	

# SPACING UNIT: TEDFORD 30C-28HZ T2N, R66W



**HEEL LOCATION**  
N: 14,563,893.78'  
E: 1,698,974.36'

LATITUDE= 40.101859°  
LONGITUDE= -104.790592°

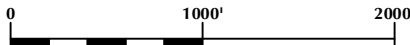
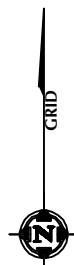
LATITUDE= 40°06'06.693"  
LONGITUDE= -104°47'26.131"

**AVAILABLE FOOTAGE**  
6999'

**BOTTOM HOLE LOCATION**  
N: 14,569,166.88'  
E: 1,698,939.99'

LATITUDE= 40.116340°  
LONGITUDE= -104.790671°

LATITUDE= 40°06'58.824"  
LONGITUDE= -104°47'26.414"



SCALE: 1" = 1000'

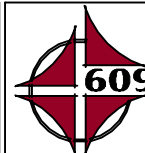
## NOTES:

- ▲ INDICATES FOUND SECTION CORNER
- INDICATES CALCULATED CORNER
- BASIS OF BEARING DERIVED FROM COLORADO COORDINATE SYSTEM 1983 NORTH ZONE UNLESS OTHERWISE NOTED.
- DRAWING NORTHING / EASTING COORDINATES ARE BASED ON COLORADO COORDINATE SYSTEM 1983 NORTH ZONE UNLESS OTHERWISE NOTED.
- COMBINED SCALE FACTOR: .99972633
- N / E COORDINATES ARE BASED ON UTM COORDINATE SYSTEM NAD83, ZONE 13
- THIS EXHIBIT DOES NOT REPRESENT A LAND SURVEY PLAT OR IMPROVEMENT SURVEY PLAT AS DEFINED BY C.R.S. 38-51-102 AND CANNOT BE RELIED UPON TO DETERMINE OWNERSHIP.

## WELL PAD - TEDFORD 29C-28HZ

TEDFORD 30C-28HZ  
SPACING UNIT EXHIBIT  
1' FSL & 292' FWL SWSW (HEEL)  
1' FNL & 286' FWL NWNW (BOTTOM)  
LOCATED IN SECTION 28  
T2N, R66W, 6TH P.M.  
WELD COUNTY, COLORADO

**Kerr-McGee Oil &  
Gas Onshore L.P.**  
1099 18th Street  
Denver, Colorado 80202



## CONSULTING, LLC

**SHERIDAN OFFICE**  
2155 North Main Street  
Sheridan, Wyoming 82801  
Phone 307-674-0609

**LOVELAND OFFICE**  
1635 Foxtrail Drive, Suite 204  
Loveland, Colorado 80538  
Phone 970-776-4331

DRAFTED BY:	LMO	CHECKED BY:	BJR	SHEET NO:
DATE DRAFTED:	12/29/14	DATE SURVEYED:	10/4/14	3
REVISED:	1/16/15	FILE NAME:	14-76	3 OF 3