



# Kerr-McGee Oil & Gas Onshore LP

A subsidiary of Anadarko Petroleum Corporation

1099 18<sup>th</sup> Street  
Denver, CO 80202  
720-929-6000

May 4, 2015

Matt Lepore  
Director, Colorado Oil and Gas Conservation Commission  
Department of Natural Resources  
The Chancery Building  
1120 Lincoln Street, Suite 801  
Denver, CO 80203

Re: **30 Day Certification Letter - 318A.e**  
TEDFORD 29C-28HZ (Doc # 400804300)  
Township 2 North, Range 66 West  
Section 28: SWSW  
Unit Acreage: 480  
Unit Spacing: 2N-66W-21: S2SW; 28: W2; 33: N2NW  
Weld County, Colorado

Dear Mr. Lepore:

Kerr-McGee Oil and Gas Onshore LP ("KMG") hereby certifies that a thirty (30) day notice has been given by certified mail to all mineral owners in the proposed wellbore spacing unit. We have not received any objections to such well location, proposed spacing unit, or additional producing formation. KMG hereby respectfully requests approval of this boundary well.

If you have any questions or issues regarding this permit, please contact Cheryl Light at (720) 929-6461.

Very truly yours,

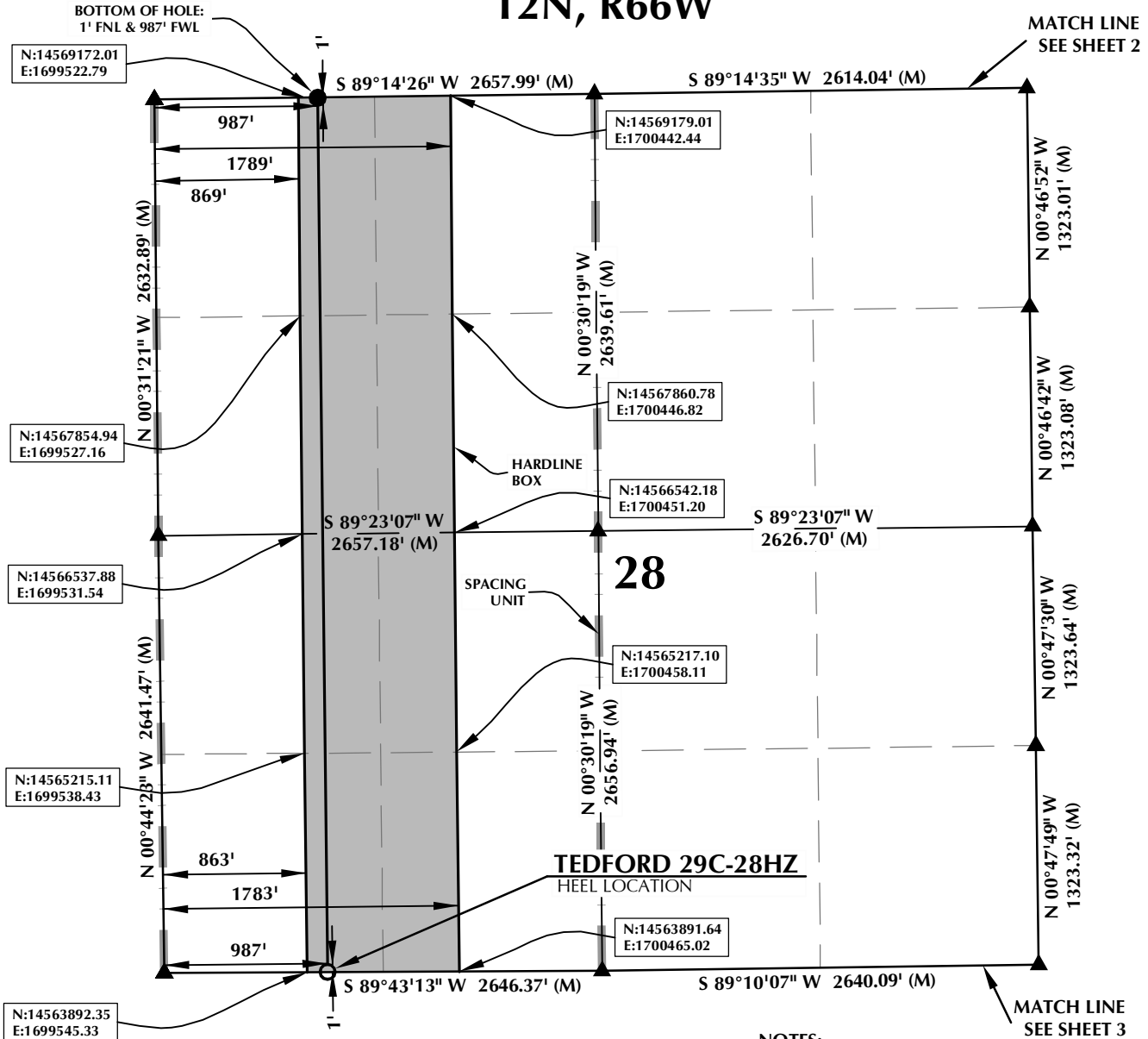
**Kerr-McGee Oil and Gas Onshore LP**

A blue ink signature of Craig Richardson, consisting of a stylized 'C' followed by a horizontal line.

Craig Richardson  
Regulatory Analyst II

Enclosure

# SPACING UNIT: TEDFORD 29C-28HZ T2N, R66W



**HEEL LOCATION**  
 N: 14,563,893.25'  
 E: 1,699,669.13'

LATITUDE= 40.101853°  
 LONGITUDE= -104.788107°

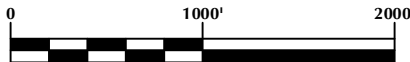
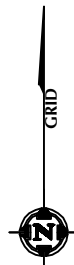
LATITUDE= 40°06'06.672"  
 LONGITUDE= -104°47'17.187"

**AVAILABLE FOOTAGE**  
 7003'

**BOTTOM HOLE LOCATION**  
 N: 14,569,171.91'  
 E: 1,699,640.76'

LATITUDE= 40.116349°  
 LONGITUDE= -104.788164°

LATITUDE= 40°06'58.857"  
 LONGITUDE= -104°47'17.390"



SCALE: 1" = 1000'

## NOTES:

- ▲ INDICATES FOUND SECTION CORNER
- INDICATES CALCULATED CORNER
- BASIS OF BEARING DERIVED FROM COLORADO COORDINATE SYSTEM 1983 NORTH ZONE UNLESS OTHERWISE NOTED.
- DRAWING NORTHING / EASTING COORDINATES ARE BASED ON COLORADO COORDINATE SYSTEM 1983 NORTH ZONE UNLESS OTHERWISE NOTED.
- COMBINED SCALE FACTOR: .99972633
- N / E COORDINATES ARE BASED ON UTM COORDINATE SYSTEM NAD83, ZONE 13
- THIS EXHIBIT DOES NOT REPRESENT A LAND SURVEY PLAT OR IMPROVEMENT SURVEY PLAT AS DEFINED BY C.R.S. 38-51-102 AND CANNOT BE RELIED UPON TO DETERMINE OWNERSHIP.

## WELL PAD - TEDFORD 29C-28HZ

TEDFORD 29C-28HZ  
 SPACING UNIT EXHIBIT  
 1' FSL & 987' FWL SWSW (HEEL)  
 1' FNL & 987' FWL NWNW (BOTTOM)  
 LOCATED IN SECTION 28  
 T2N, R66W, 6TH P.M.  
 WELD COUNTY, COLORADO

**Kerr-McGee Oil &  
 Gas Onshore L.P.**  
 1099 18th Street  
 Denver, Colorado 80202



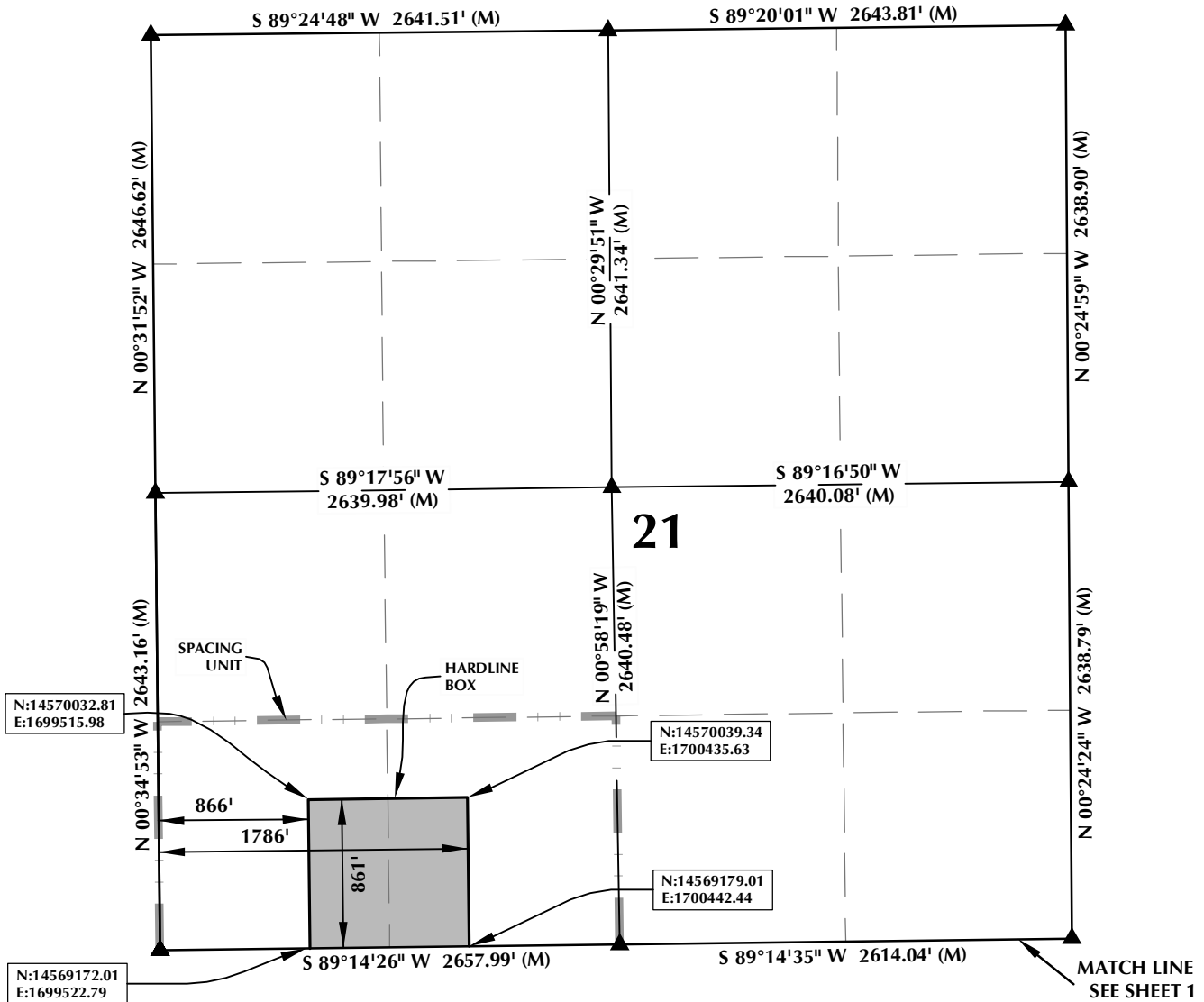
## CONSULTING, LLC

**SHERIDAN OFFICE**  
 2155 North Main Street  
 Sheridan, Wyoming 82801  
 Phone 307-674-0609

**LOVELAND OFFICE**  
 1635 Foxtrail Drive, Suite 204  
 Loveland, Colorado 80538  
 Phone 970-776-4331

DRAFTED BY:	LMO	CHECKED BY:	BJR	SHEET NO:
DATE DRAFTED:	12/29/14	DATE SURVEYED:	10/4/14	1
REVISED:		FILE NAME:	14-76	1 OF 3

# SPACING UNIT: TEDFORD 29C-28HZ T2N, R66W



**HEEL LOCATION**  
N: 14,563,893.25'  
E: 1,699,669.13'

LATITUDE= 40.101853°  
LONGITUDE= -104.788107°

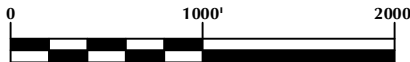
LATITUDE= 40°06'06.672"  
LONGITUDE= -104°47'17.187"

**AVAILABLE FOOTAGE**  
7003'

**BOTTOM HOLE LOCATION**  
N: 14,569,171.91'  
E: 1,699,640.76'

LATITUDE= 40.116349°  
LONGITUDE= -104.788164°

LATITUDE= 40°06'58.857"  
LONGITUDE= -104°47'17.390"



SCALE: 1" = 1000'

## NOTES:

1. ▲ INDICATES FOUND SECTION CORNER
2. ● INDICATES CALCULATED CORNER
3. BASIS OF BEARING DERIVED FROM COLORADO COORDINATE SYSTEM 1983 NORTH ZONE UNLESS OTHERWISE NOTED.
4. DRAWING NORTHING / EASTING COORDINATES ARE BASED ON COLORADO COORDINATE SYSTEM 1983 NORTH ZONE UNLESS OTHERWISE NOTED.
5. COMBINED SCALE FACTOR: .99972633
6. N / E COORDINATES ARE BASED ON UTM COORDINATE SYSTEM NAD83, ZONE 13
7. THIS EXHIBIT DOES NOT REPRESENT A LAND SURVEY PLAT OR IMPROVEMENT SURVEY PLAT AS DEFINED BY C.R.S. 38-51-102 AND CANNOT BE RELIED UPON TO DETERMINE OWNERSHIP.

## WELL PAD - TEDFORD 29C-28HZ

TEDFORD 29C-28HZ  
SPACING UNIT EXHIBIT  
1' FSL & 987' FWL SWSW (HEEL)  
1' FNL & 987' FWL NWNW (BOTTOM)  
LOCATED IN SECTION 28  
T2N, R66W, 6TH P.M.  
WELD COUNTY, COLORADO

**Kerr-McGee Oil &  
Gas Onshore L.P.**  
1099 18th Street  
Denver, Colorado 80202



## CONSULTING, LLC

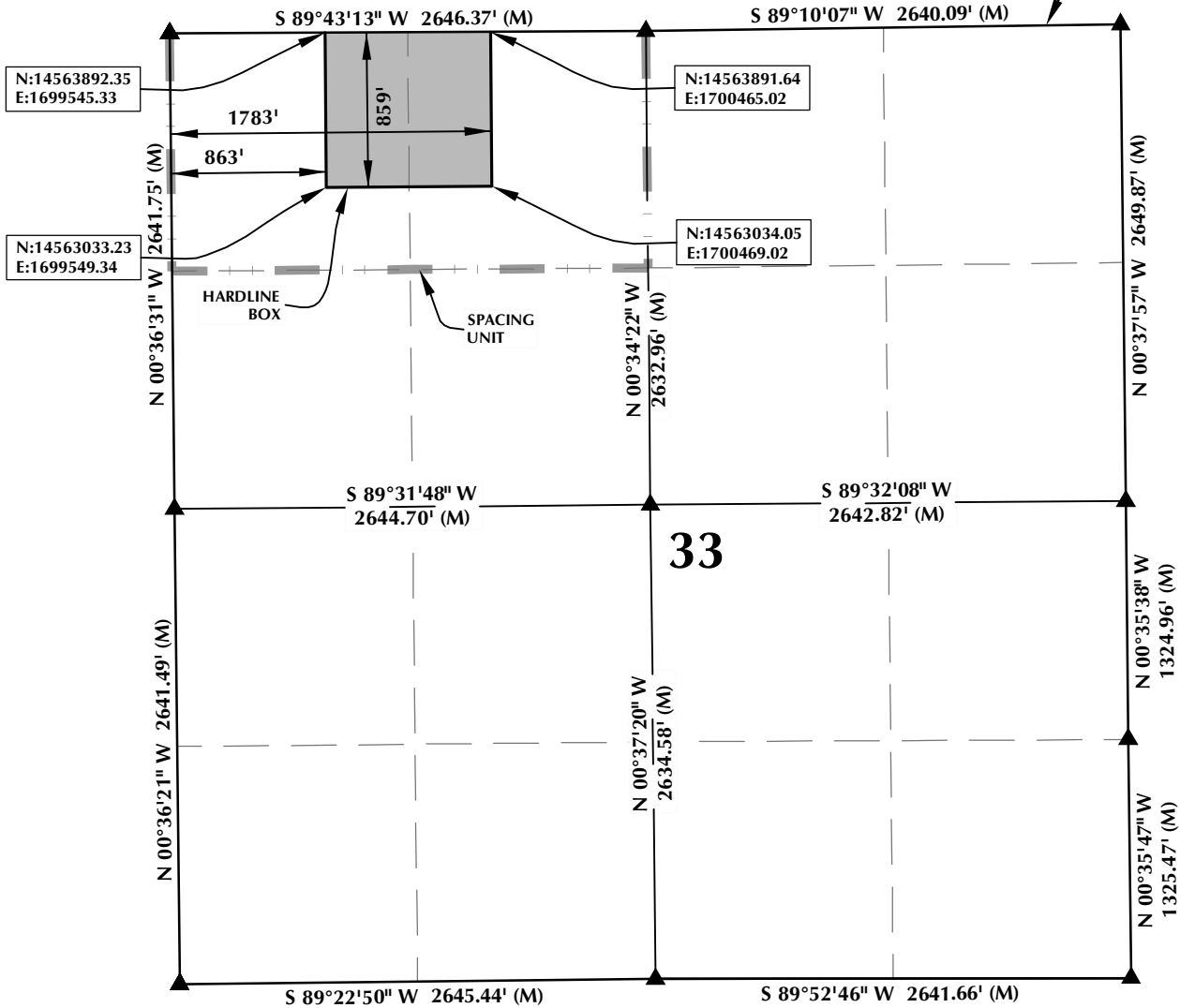
**SHERIDAN OFFICE**  
2155 North Main Street  
Sheridan, Wyoming 82801  
Phone 307-674-0609

**LOVELAND OFFICE**  
1635 Foxtrail Drive, Suite 204  
Loveland, Colorado 80538  
Phone 970-776-4331

DRAFTED BY:	LMO	CHECKED BY:	BJR	SHEET NO:
DATE DRAFTED:	12/29/14	DATE SURVEYED:	10/4/14	2
REVISED:		FILE NAME:	14-76	2 OF 3

# SPACING UNIT: TEDFORD 29C-28HZ T2N, R66W

MATCH LINE  
SEE SHEET 1



**HEEL LOCATION**  
N: 14,563,893.25'  
E: 1,699,669.13'

LATITUDE= 40.101853°  
LONGITUDE= -104.788107°

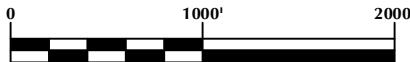
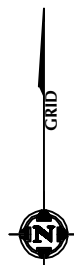
LATITUDE= 40°06'06.672"  
LONGITUDE= -104°47'17.187"

**AVAILABLE FOOTAGE**  
7003'

**BOTTOM HOLE LOCATION**  
N: 14,569,171.91'  
E: 1,699,640.76'

LATITUDE= 40.116349°  
LONGITUDE= -104.788164°

LATITUDE= 40°06'58.857"  
LONGITUDE= -104°47'17.390"



SCALE: 1" = 1000'

## NOTES:

1. ▲ INDICATES FOUND SECTION CORNER
2. ● INDICATES CALCULATED CORNER
3. BASIS OF BEARING DERIVED FROM COLORADO COORDINATE SYSTEM 1983 NORTH ZONE UNLESS OTHERWISE NOTED.
4. DRAWING NORTHING / EASTING COORDINATES ARE BASED ON COLORADO COORDINATE SYSTEM 1983 NORTH ZONE UNLESS OTHERWISE NOTED.
5. COMBINED SCALE FACTOR: .99972633
6. N / E COORDINATES ARE BASED ON UTM COORDINATE SYSTEM NAD83, ZONE 13
7. THIS EXHIBIT DOES NOT REPRESENT A LAND SURVEY PLAT OR IMPROVEMENT SURVEY PLAT AS DEFINED BY C.R.S. 38-51-102 AND CANNOT BE RELIED UPON TO DETERMINE OWNERSHIP.

## WELL PAD - TEDFORD 29C-28HZ

TEDFORD 29C-28HZ  
SPACING UNIT EXHIBIT  
1' FSL & 987' FWL SWSW (HEEL)  
1' FNL & 987' FWL NWNW (BOTTOM)  
LOCATED IN SECTION 28  
T2N, R66W, 6TH P.M.  
WELD COUNTY, COLORADO

**Kerr-McGee Oil &  
Gas Onshore L.P.**  
1099 18th Street  
Denver, Colorado 80202



## CONSULTING, LLC

**SHERIDAN OFFICE**  
2155 North Main Street  
Sheridan, Wyoming 82801  
Phone 307-674-0609

**LOVELAND OFFICE**  
1635 Foxtrail Drive, Suite 204  
Loveland, Colorado 80538  
Phone 970-776-4331

DRAFTED BY:	LMO	CHECKED BY:	BJR	SHEET NO:
DATE DRAFTED:	12/29/14	DATE SURVEYED:	10/4/14	3
REVISED:		FILE NAME:	14-76	3 OF 3