



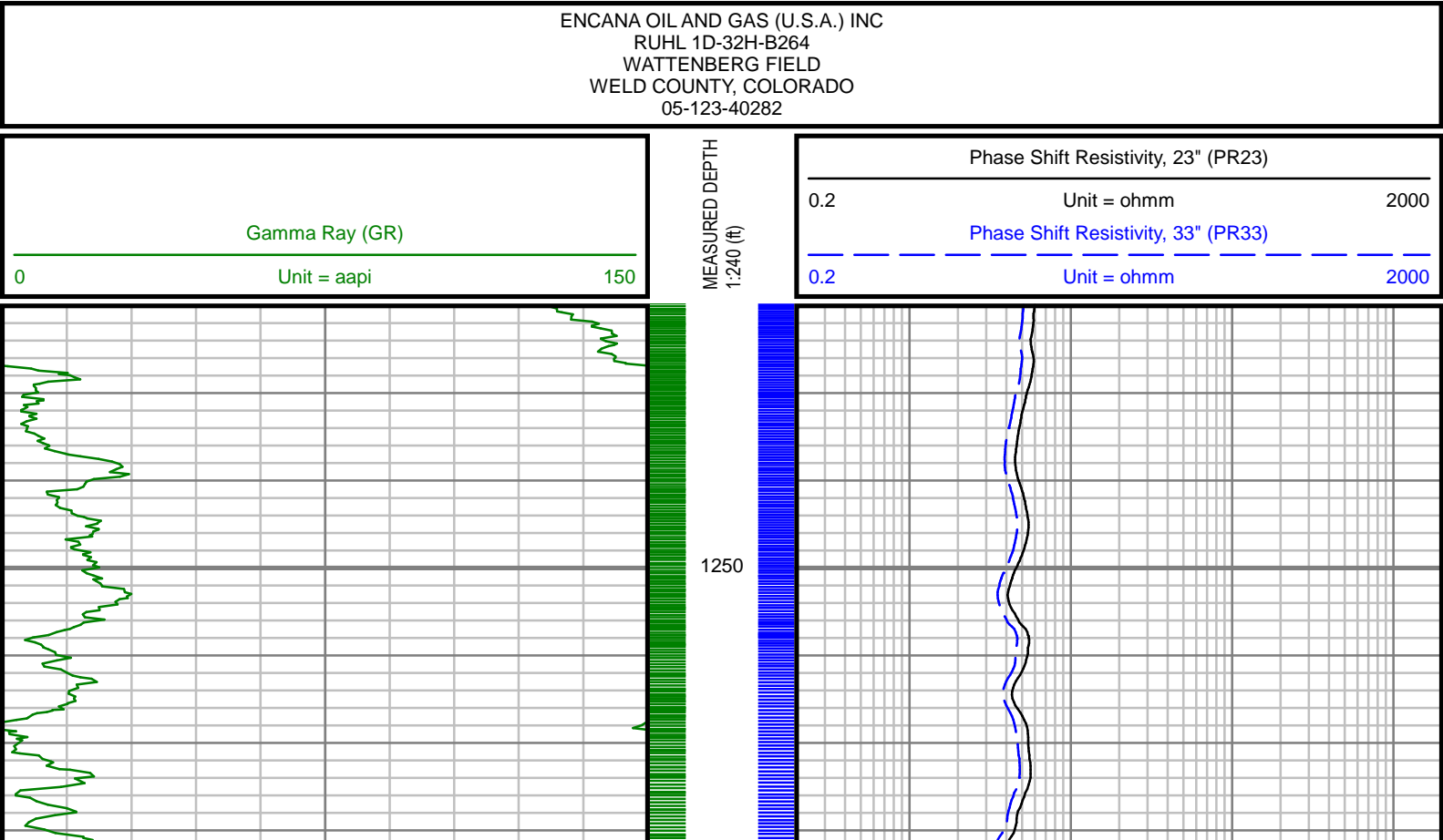
PROPAGATION RESISTIVITY  
GAMMA RAY

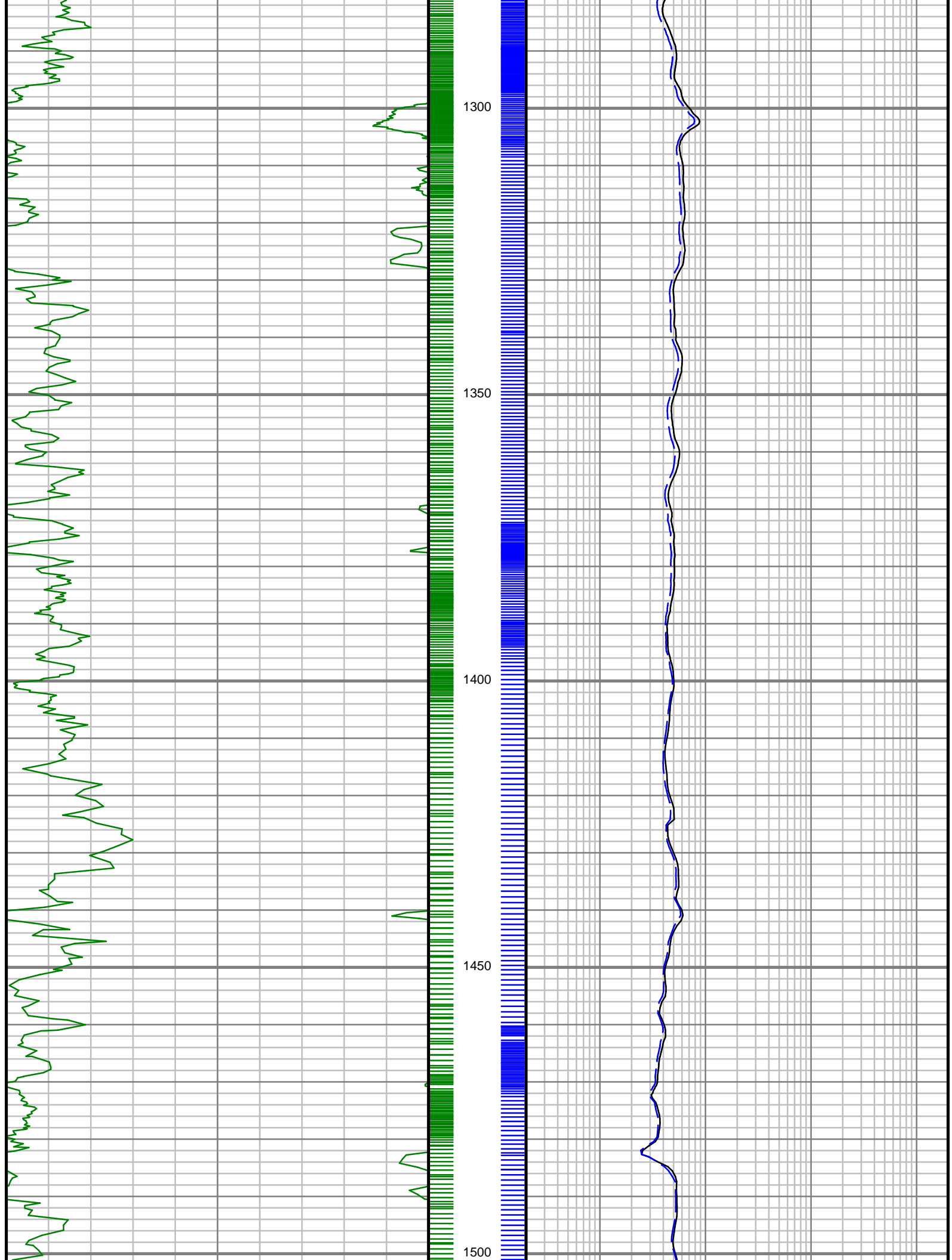
5" = 100' FEET MD

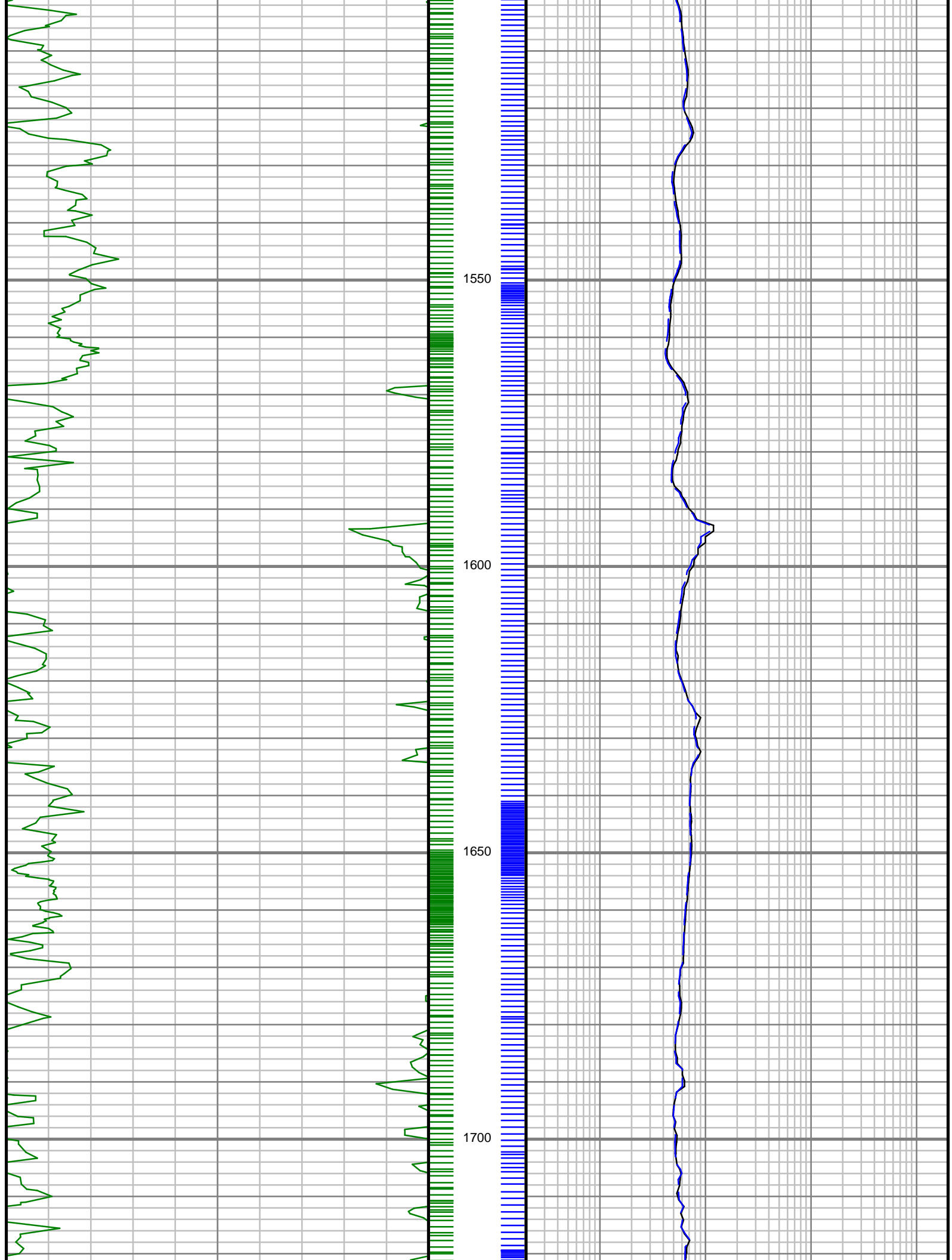
COMPANY : ENCANA OIL AND GAS (U.S.A) INC WELL : RUHL 1D-32H-B264 FIELD : WATTENBERG COUNTY : WELD STATE : COLORADO COUNTRY : U.S.A. UWI : 05-123-40282				COMPANY : ENCANA OIL AND GAS (U.S.A) INC WELL : RUHL 1D-32H-B264 FIELD : WATTENBERG COUNTY : WELD STATE : COLORADO COUNTRY : U.S.A. UWI : 05-123-40282			
DEPTH REF. : RKB REF. HEIGHT : 25.000 ft GROUND LEVEL : 4979.000 ft		RKB to Ground Level G.L. to MEAN SEA LEVEL		WELL LOCATION LAT:40°6'5.180"N LONG:104°34'25.079"W N:1281152.14 ft E:3259134.30 ft SEC:32 TWP:2N RANGE:64W		OTHER SERVICES DIRECTIONAL ROP CONDUCTIVITY FETR	
BOREHOLE RECORD				DEVIATION RECORD			
HOLE SIZE in	FROM ft	TO ft	INCLINATION deg	FROM ft	TO ft		
12.25	0	1221	0 - 11	0	3141		
8.75	1221	7435	11 - 0	3141	6527		
			0 - 85	6527	7435		
CASING RECORD							
CASING SIZE in	FROM ft	TO ft					
16	0	129					
7	0	7405					
			DRILLING CO. : H&P RLG: 278 LMD UNIT NO. : MWD-00046-DISTRICT: CASPER, CASPER SPUD DATE: 12/11/2014 LMD START DATE: 01/04/2015 LMD END DATE: 01/06/2015				
			DEPTH : 1220 ft DEPTH : 7435 ft TOTAL DEPTH : 7435 ft				

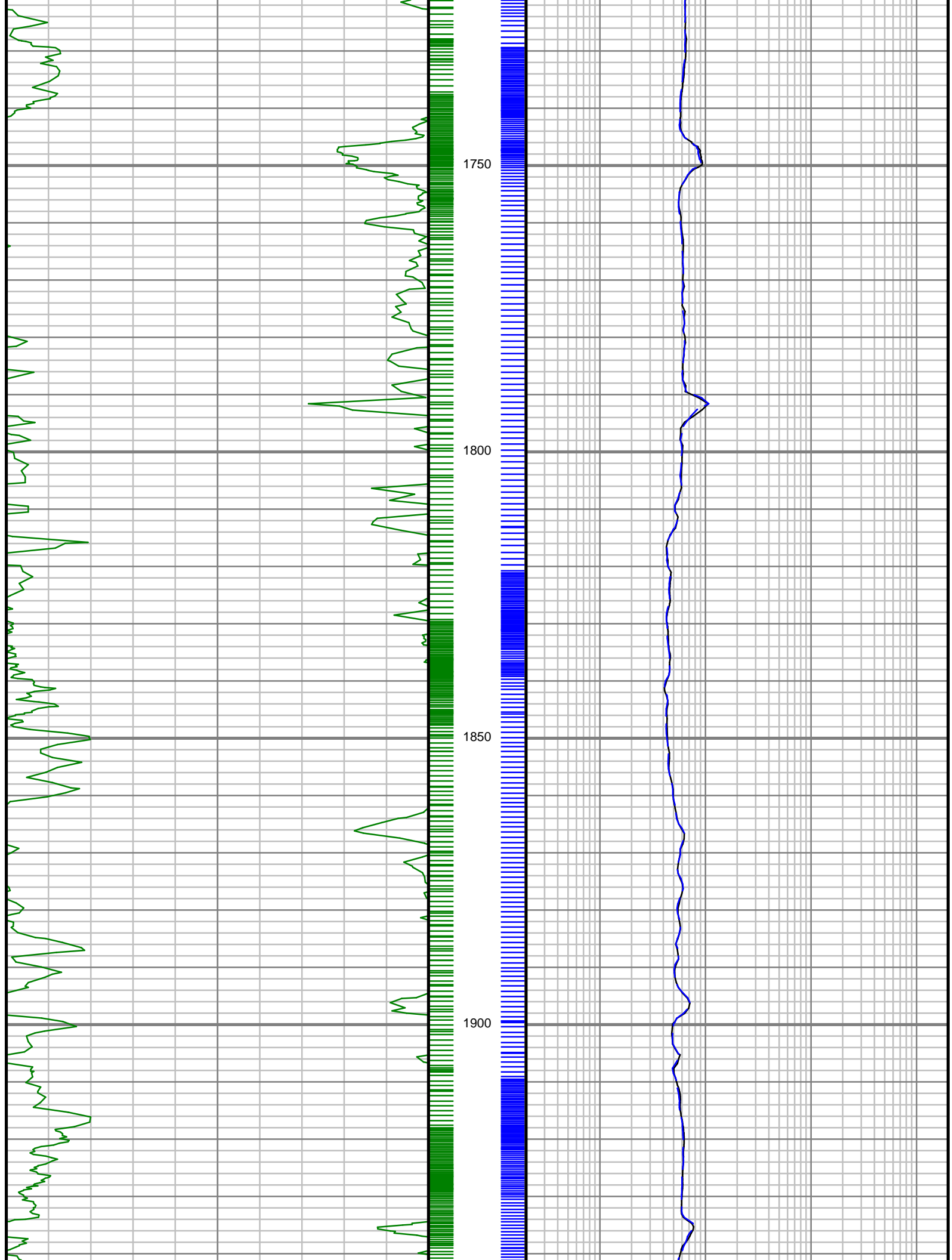
Remarks
ENCANA OIL AND GAS (U.S.A) INC PRODUCTION AFE# 13179003
SCIENTIFIC DRILLING INTERNATIONAL JOB# 232819, 241125
ALL REFERENCES IN THE DEPTH TRACK ARE AT BIT DEPTH.
ALL DATA IS MEMORY DATA UNLESS STATED OTHERWISE.
FLAT AVERAGE FILTER OF 1.00 FT APPLIED TO GAMMA RAY CURVE
FLAT AVERAGE FILTER OF 1.00 FT APPLIED TO PHASE SHIFT RESISTIVITY, 23" CURVE
FLAT AVERAGE FILTER OF 1.00 FT APPLIED TO PHASE SHIFT RESISTIVITY, 33" CURVE
RUN #1 : MWD / DIRECTIONAL RUN
SENSORS S/N: EM5 = 1154 / MWD EYE = 0645
BIT TO SENSOR OFFSET: SURVEY = 60.90 FT.
RUN #2 : MWD / GAMMA RAY / PROPAGATION RESISTIVITY LOGGING RUN
SENSORS S/N: PULSER = 128-333 / CONT = 126 / MWD EYE = 522 / PRT = 312 / GAMMA RAY = 1076
BIT TO SENSOR OFFSETS: SURVEY = 55.74 FT. / RESISTIVITY = 45.07 FT. / GAMMA RAY = 36.57 FT.
MNEMONICS LIST:
GR = GAMMA RAY
PR23 = PHASE SHIFT RESISTIVITY, 23"
PR33 = PHASE SHIFT RESISTIVITY, 33"

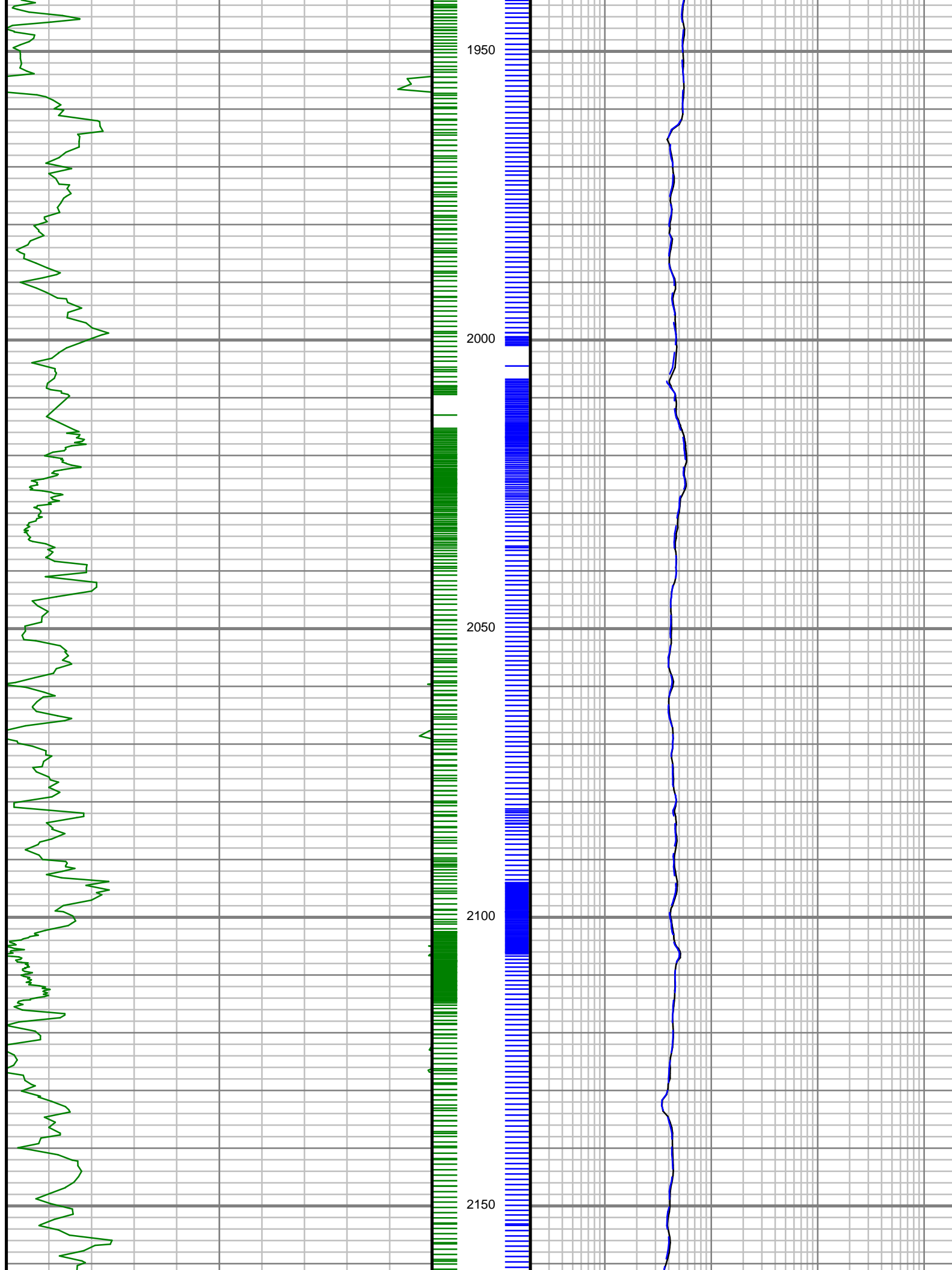
All interpretations are opinions based on inferences from electrical or other measurements and we cannot, and do not guarantee the accuracy or correctness of any interpretations, and we shall not, except in the case of gross or willful negligence on our part, be liable or responsible for any loss, costs, damages or expenses incurred or sustained by anyone resulting from any interpretation made by any of our officers, agents or employees. These interpretations are also subject to our general terms and conditions as set out in our current price schedule.

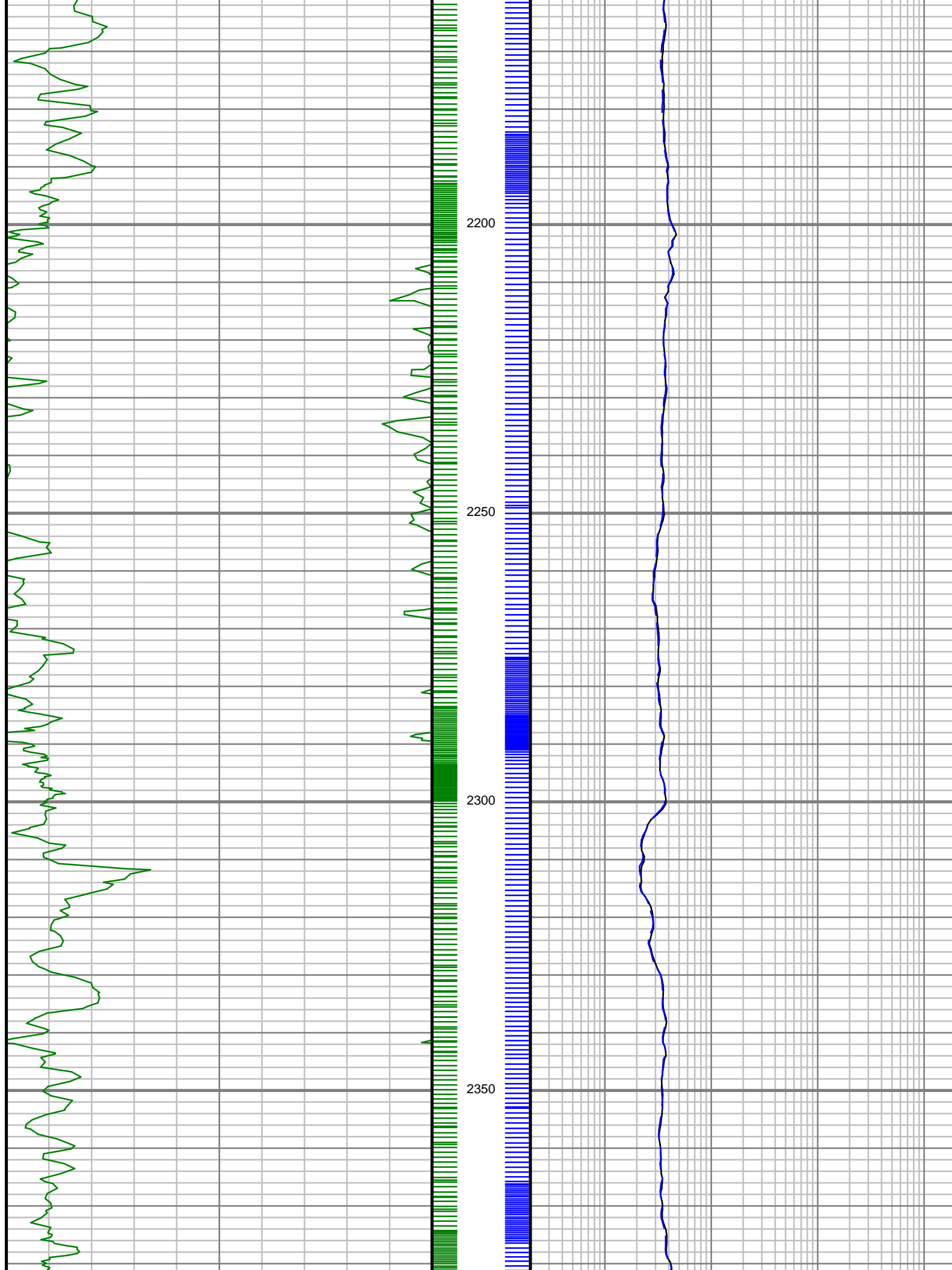


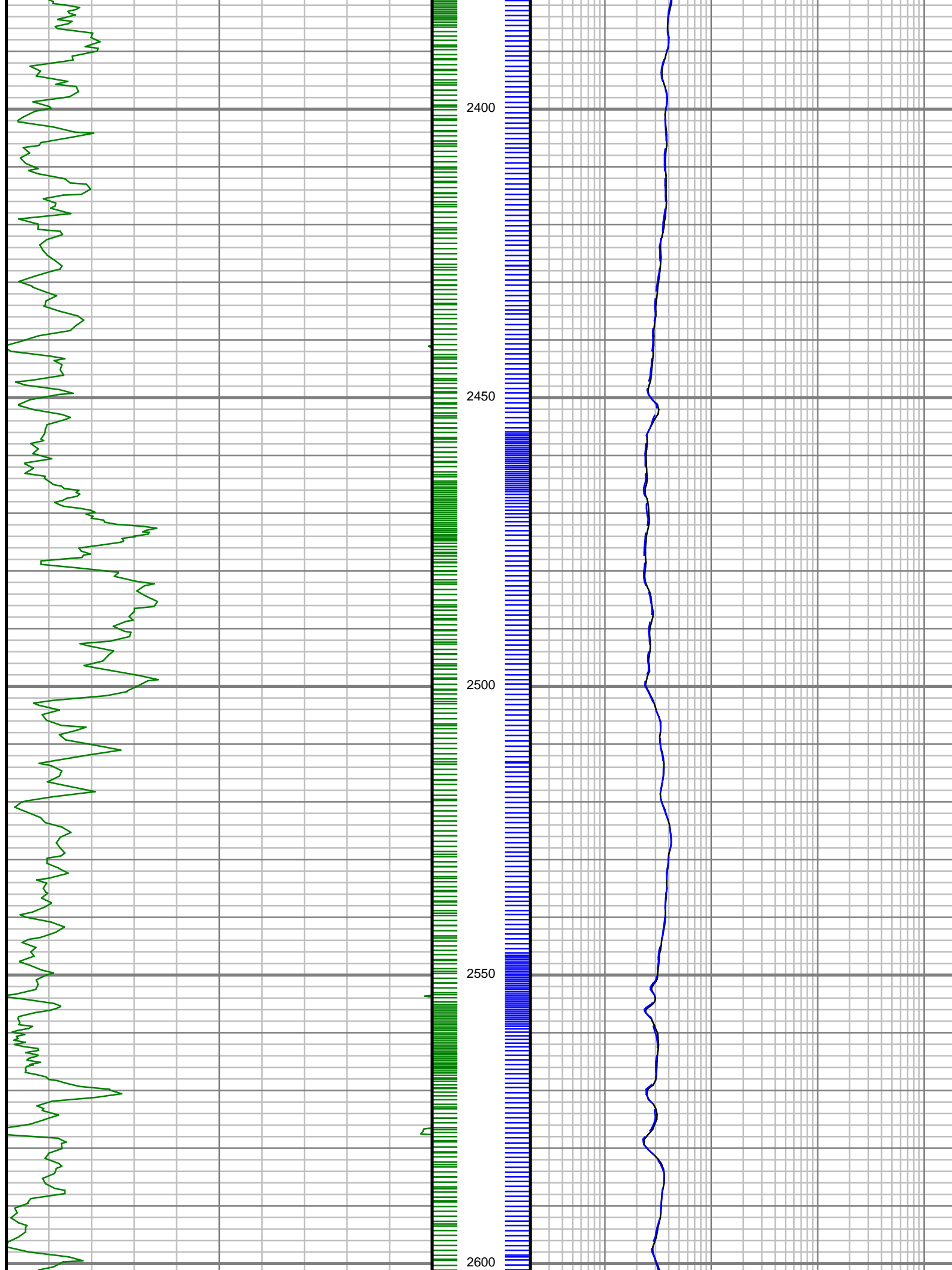




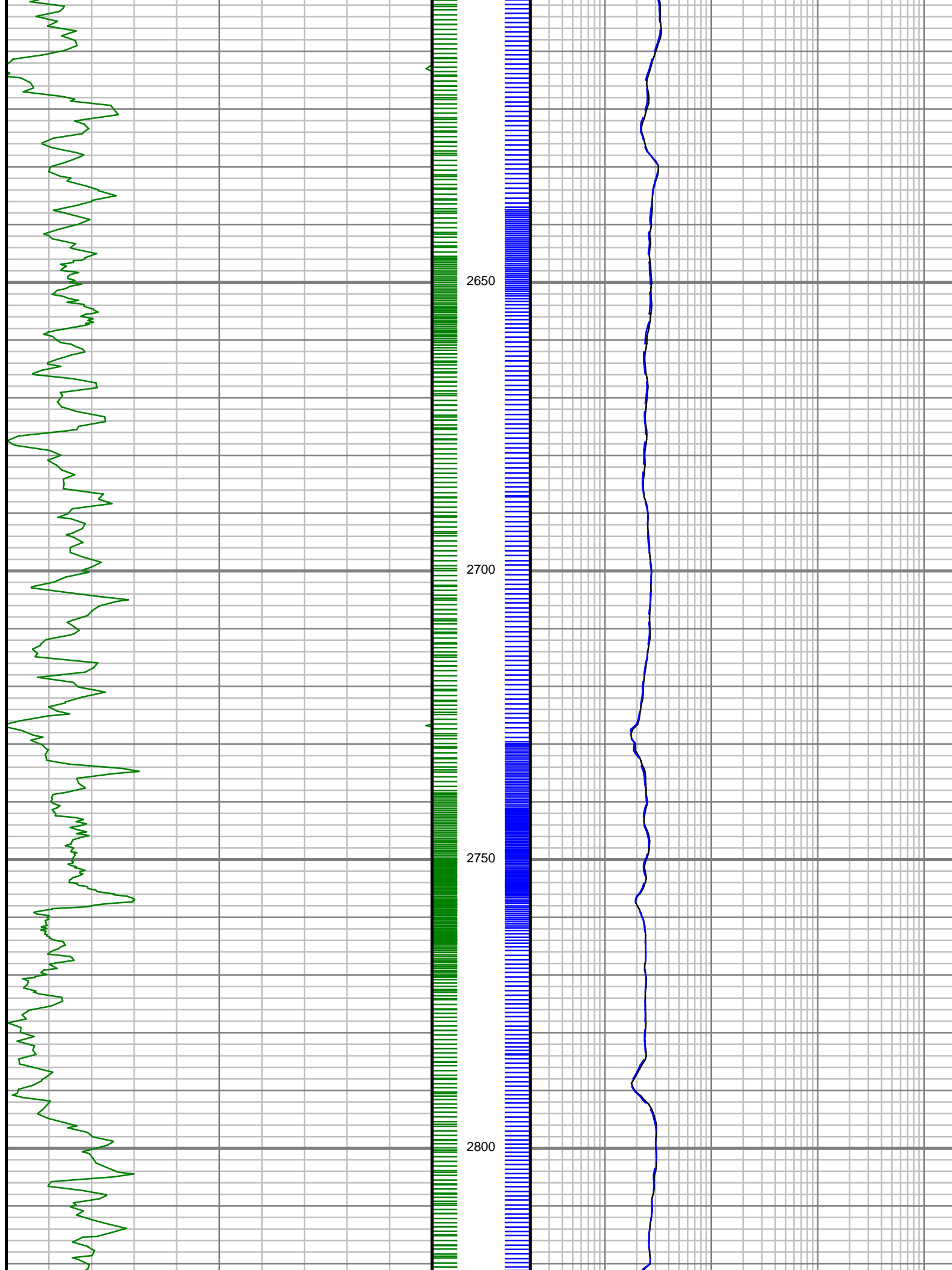


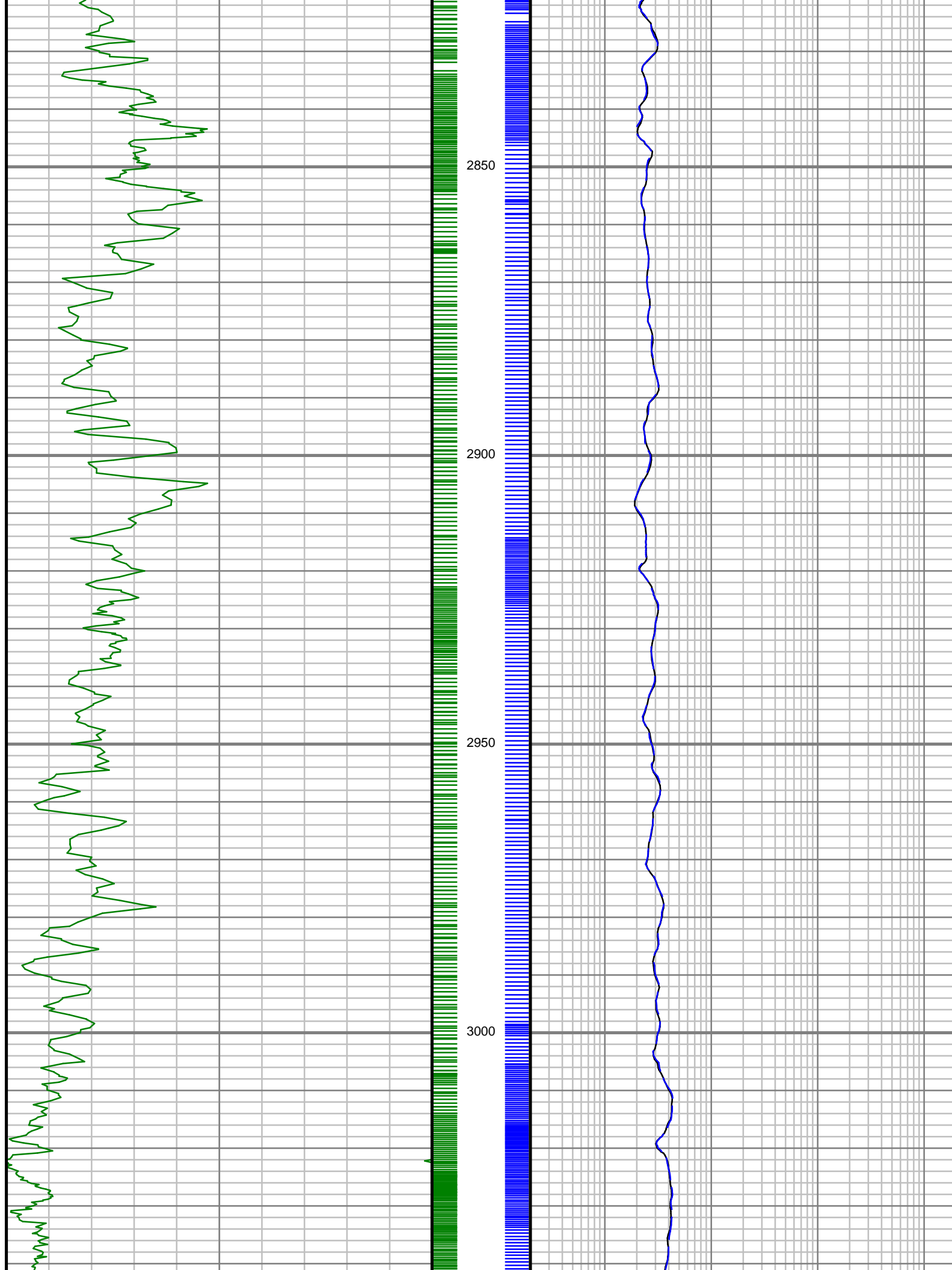


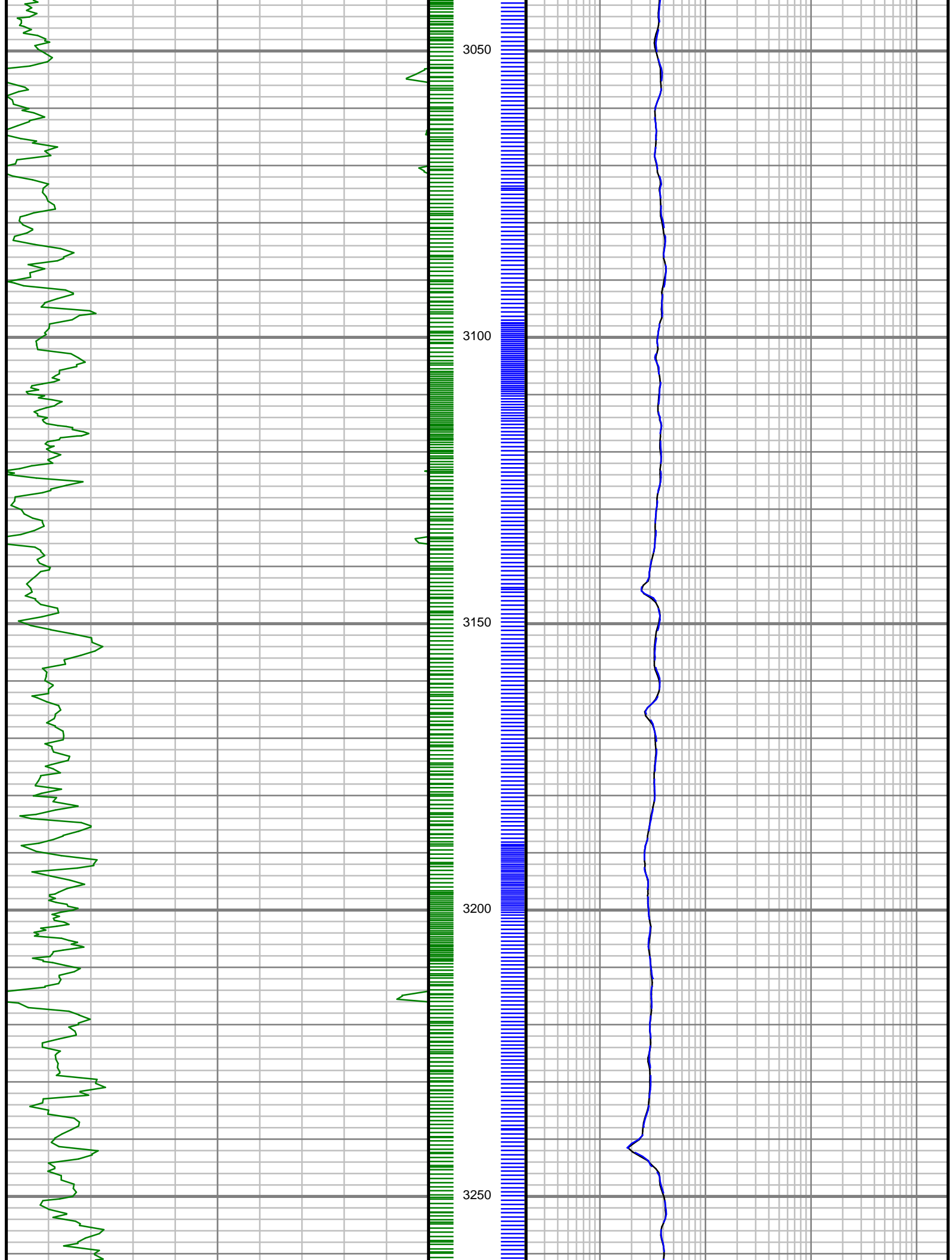


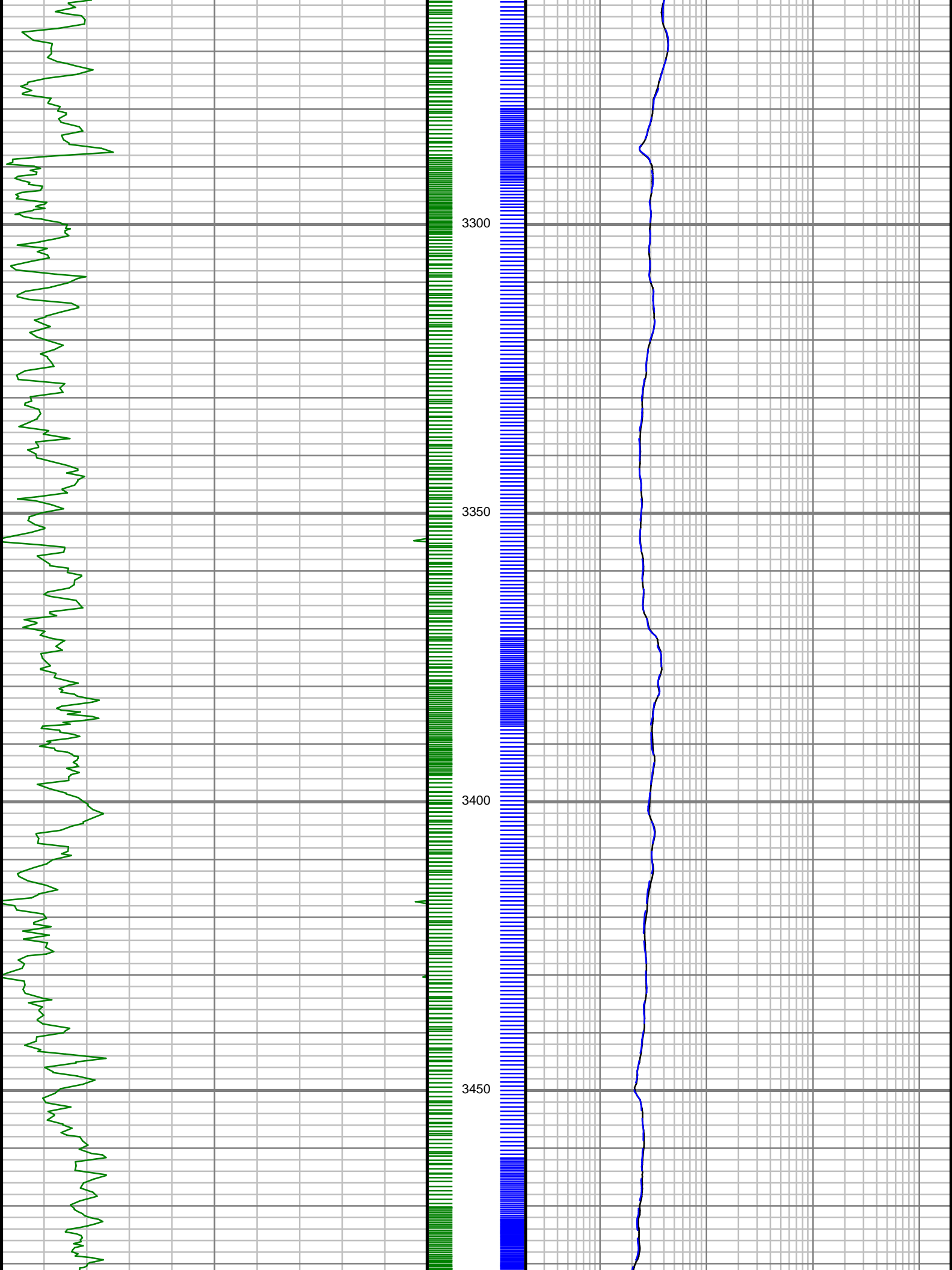


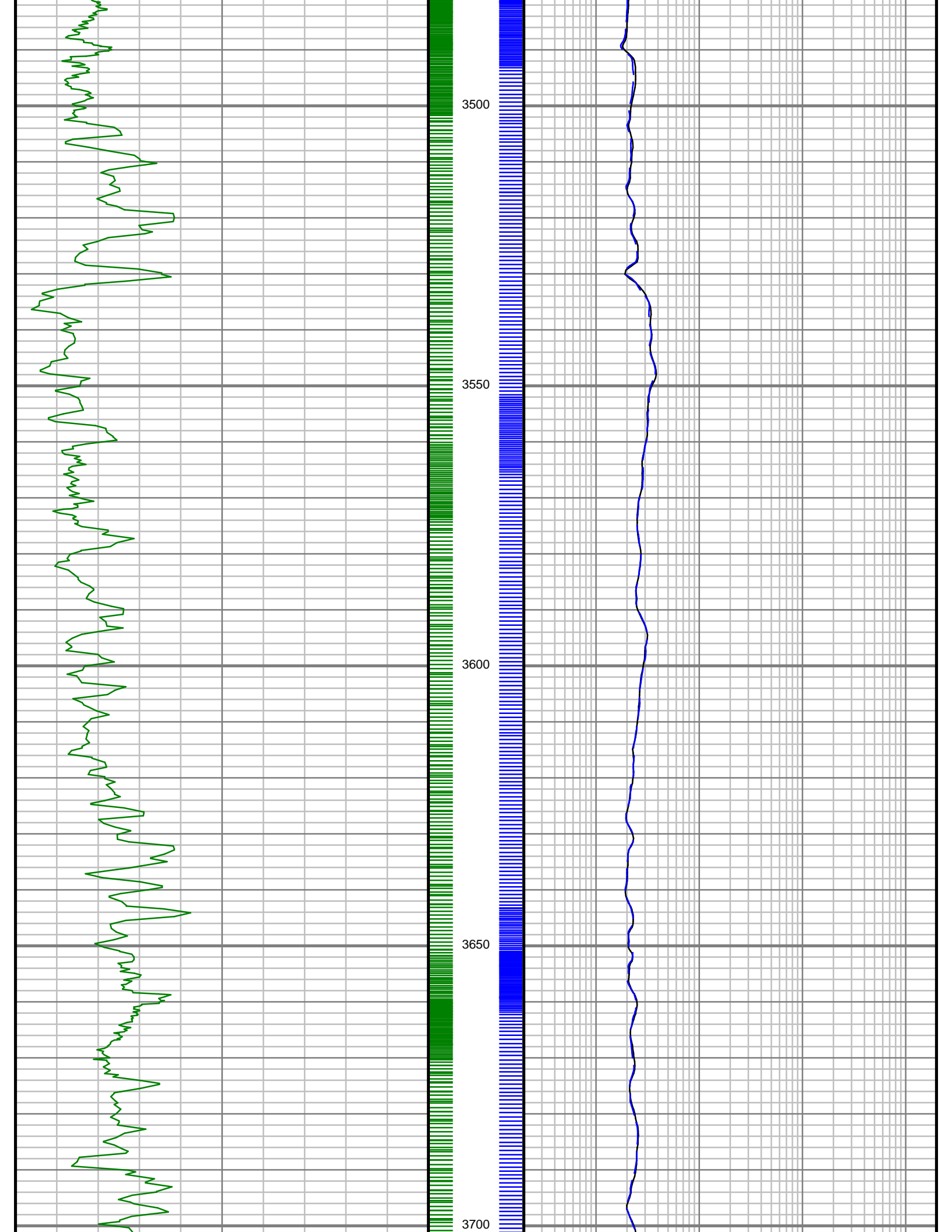


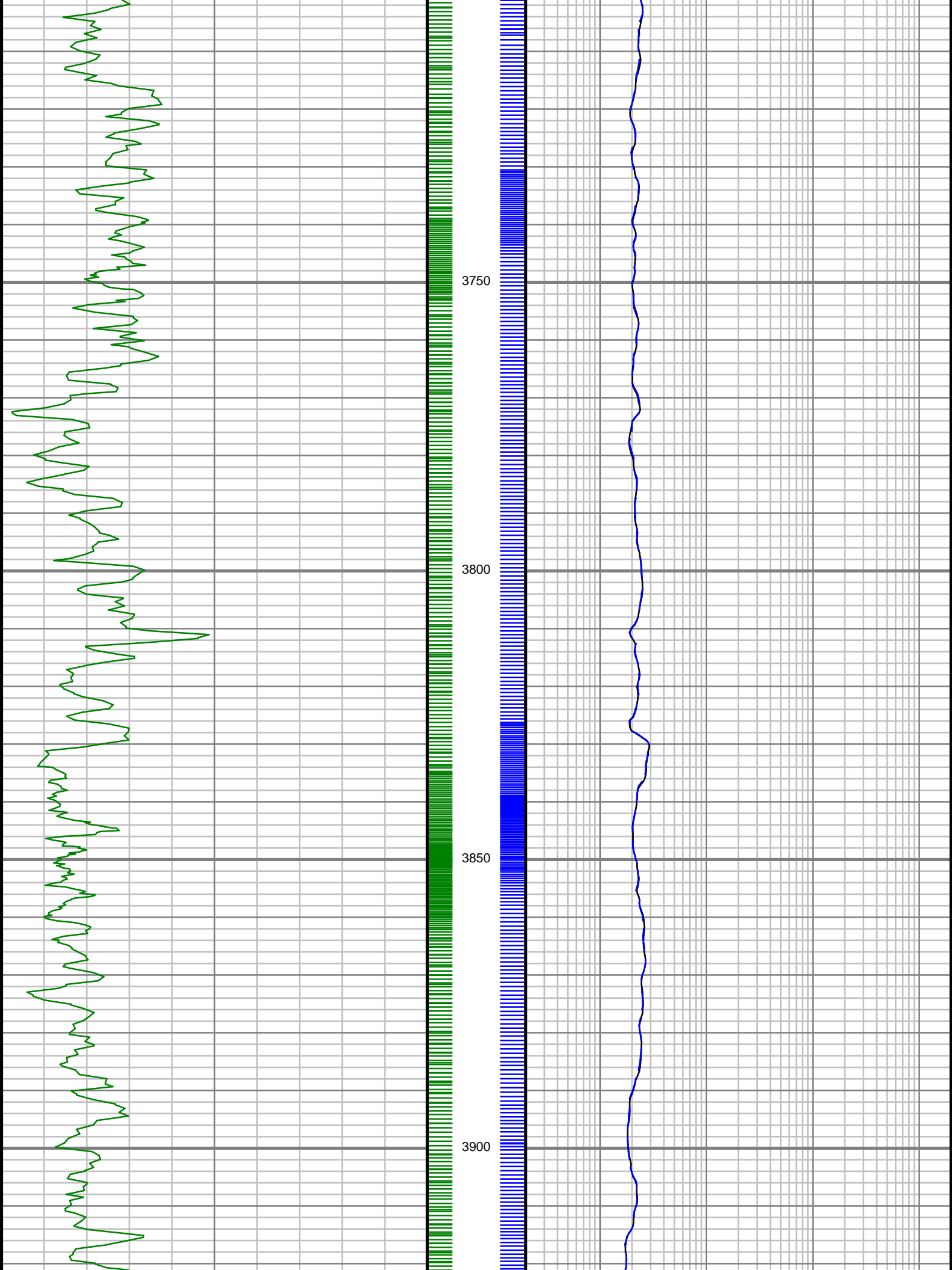


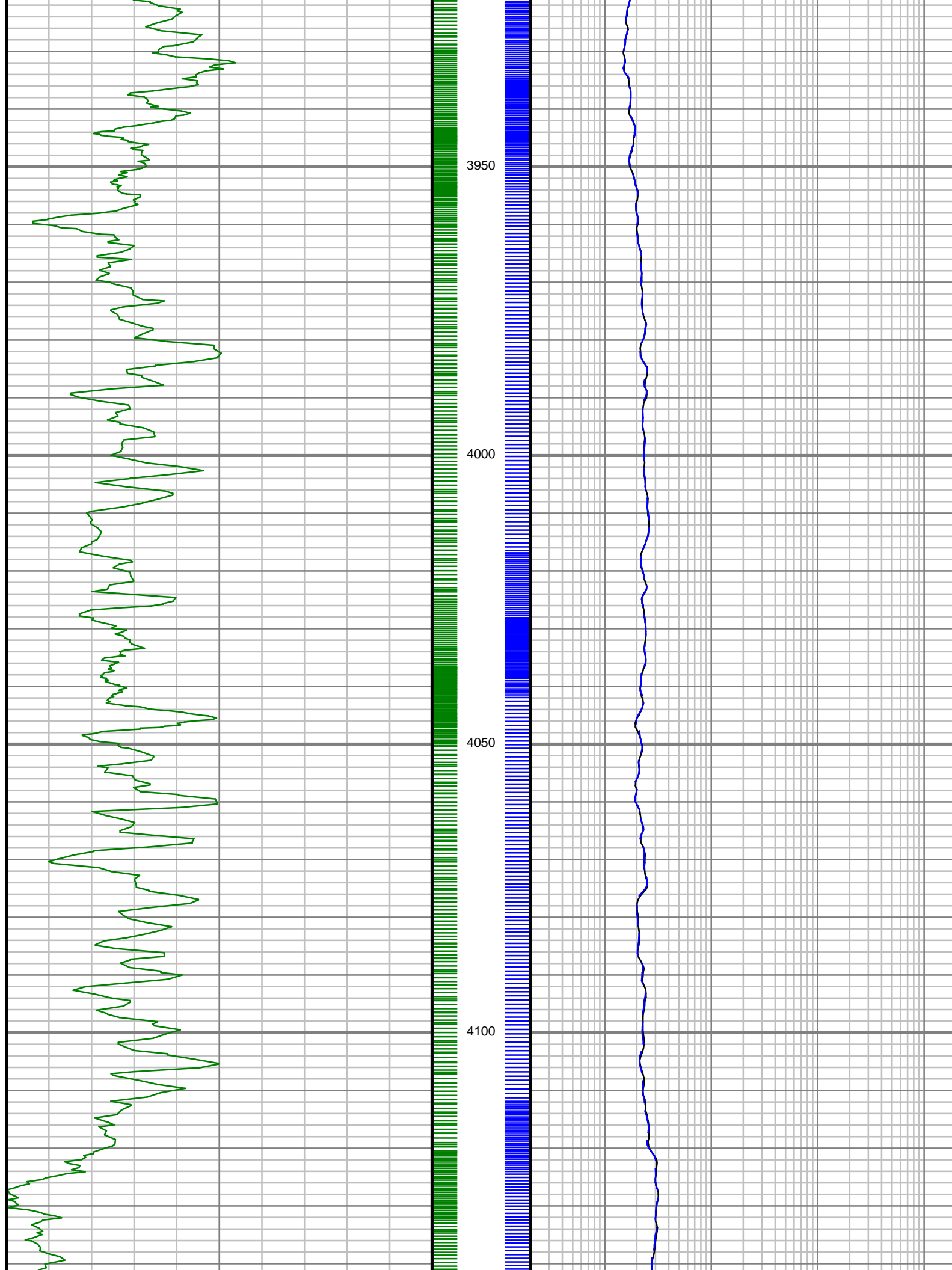


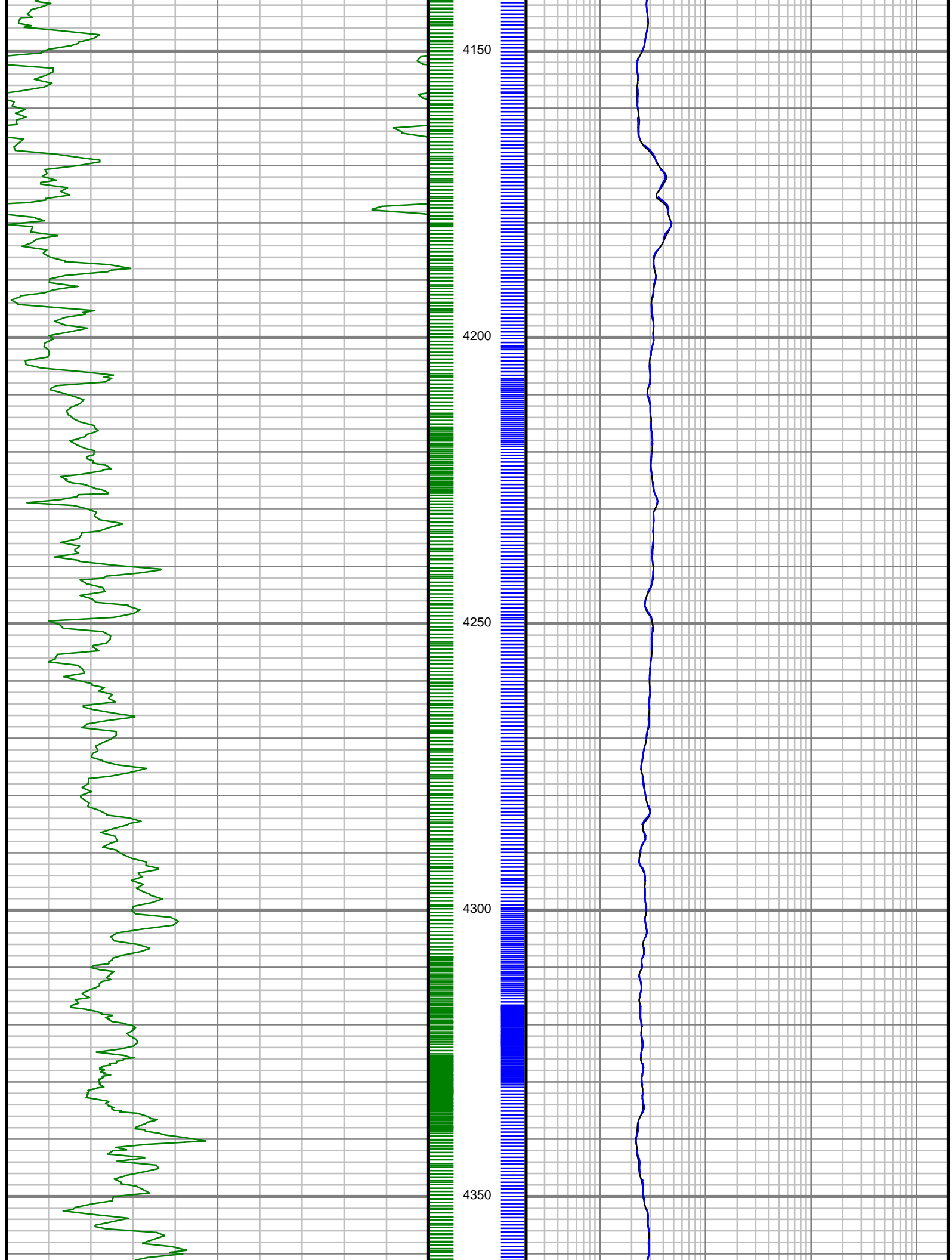




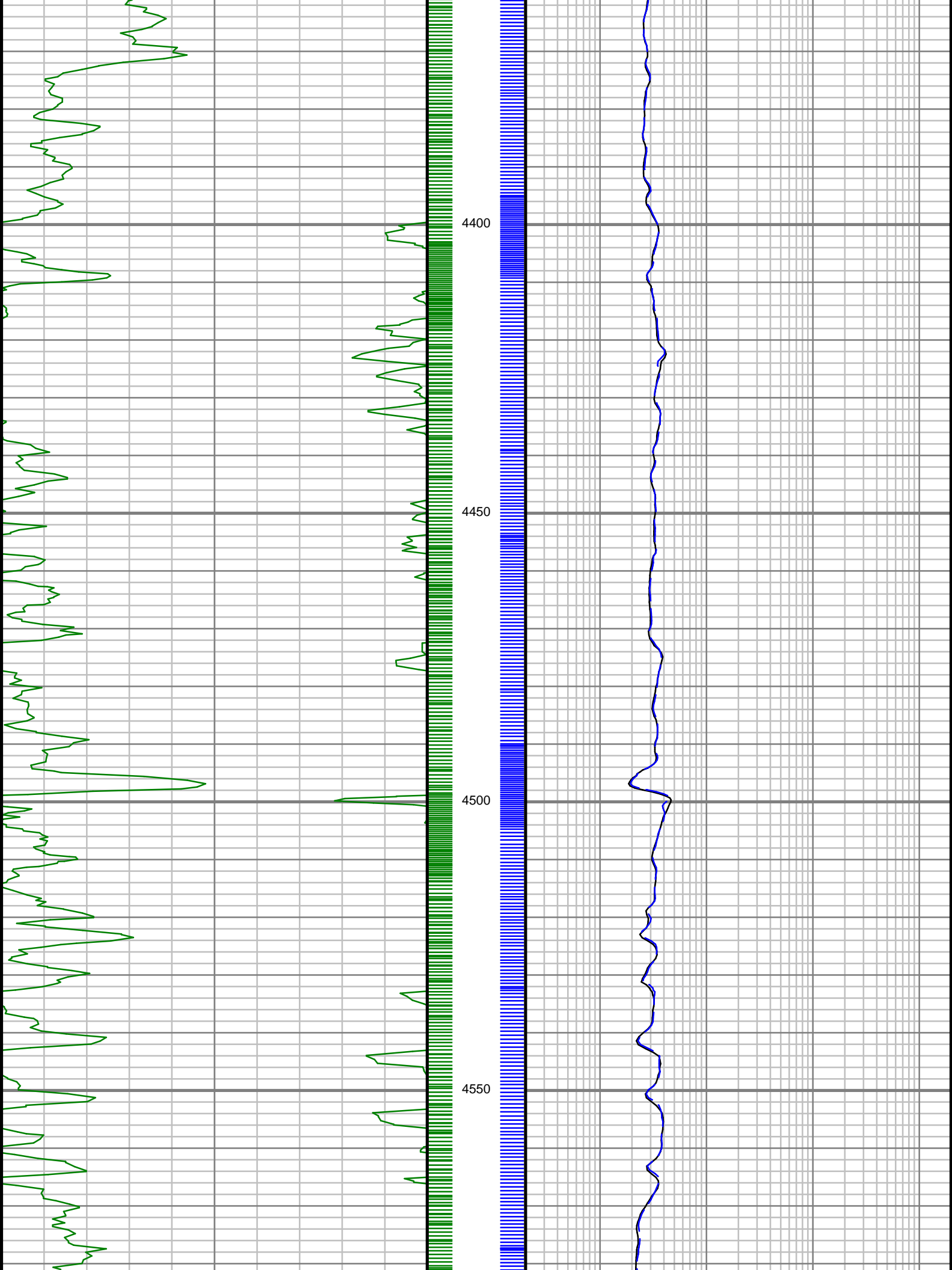


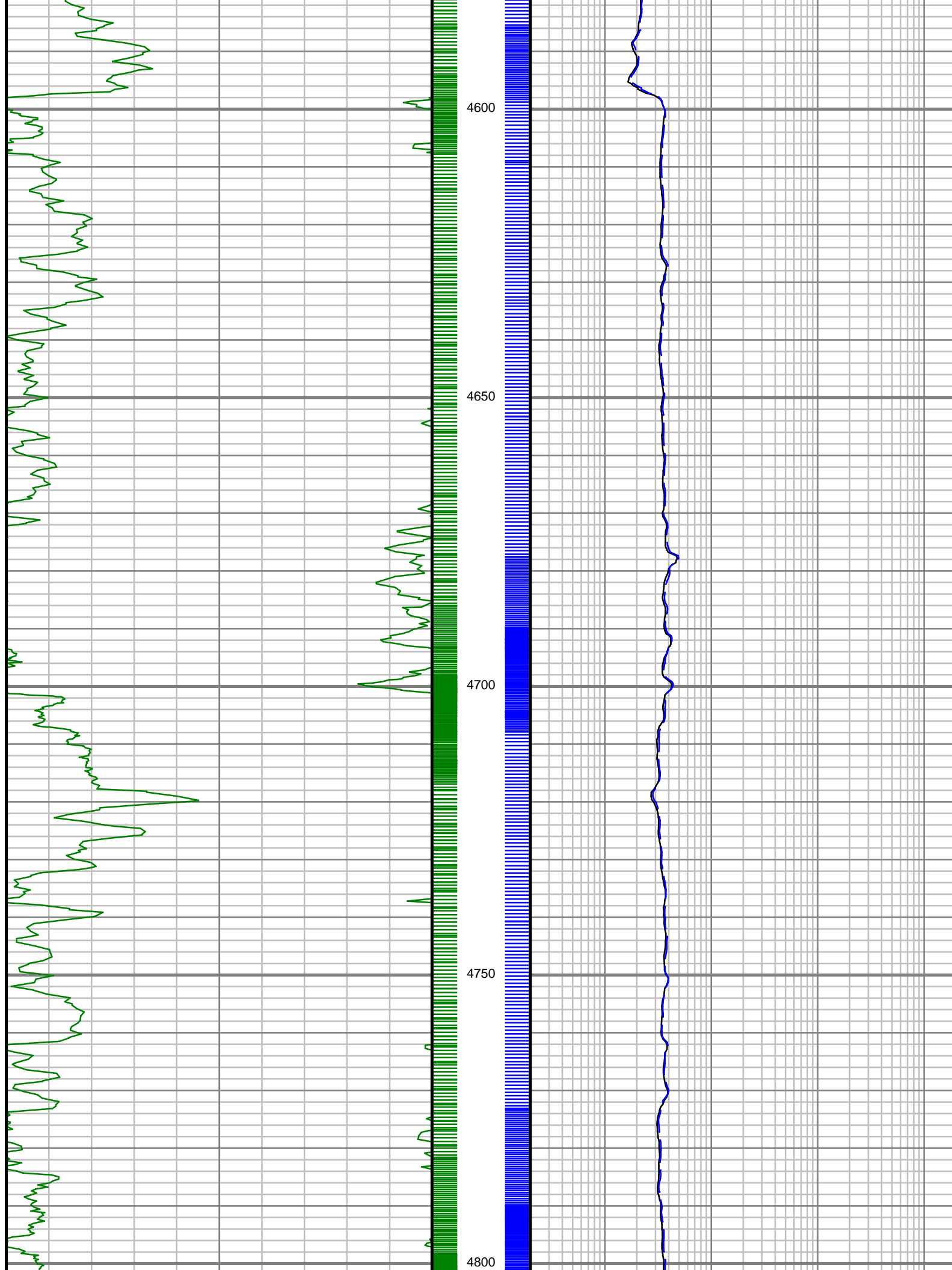


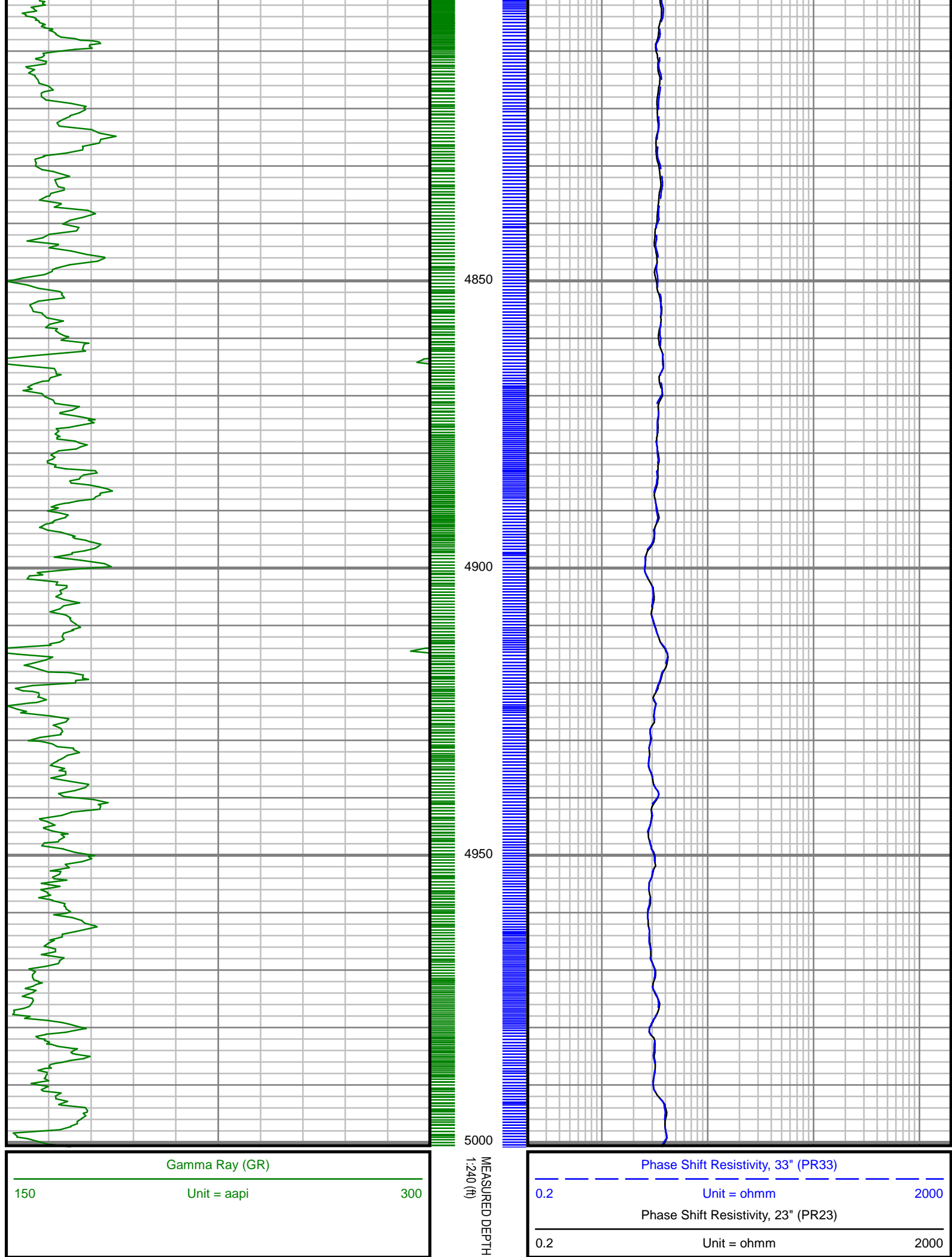












Gamma Ray (GR)

150 Unit = aapi 300

Phase Shift Resistivity, 33" (PR33)

0.2 Unit = ohmm 2000

Phase Shift Resistivity, 23" (PR23)

0.2 Unit = ohmm 2000

MEASURED DEPTH  
1240 (ft)

5" = 100' FEET MD