



# HALLIBURTON

iCem® Service

## **WHITING OIL & GAS CORP - EBUS**

**For:**

Date: Monday, March 09, 2015

**RAZOR 11 H-0215A**

Case 1

Job Date: Monday, March 09, 2015

Sincerely,





2	SwiftCem	SWIFTCEM (TM) SYSTEM	380	sack	12.5	2.17		6	12.35	
12.35 Gal		FRESH WATER								
Fluid #	Stage Type	Fluid Name	Qty	Qty UoM	Mixing Density lbm/gal	Yield ft3/sack	Mix Fluid Gal	Rate bbl/min	Total Mix Fluid Gal	
3	SwiftCem	SWIFTCEM (TM) SYSTEM	210	sack	14.2	1.54		6	7.66	
7.66 Gal		FRESH WATER								
Fluid #	Stage Type	Fluid Name	Qty	Qty UoM	Mixing Density lbm/gal	Yield ft3/sack	Mix Fluid Gal	Rate bbl/min	Total Mix Fluid Gal	
4	Displacement	Displacement	138.9	bbl	8.33			6		
Cement Left In Pipe		Amount	45 ft		Reason			Shoe Joint		
Mix Water:		pH ##	Mix Water## ppm			Mix Water Temperature:## °F °C				
			Chloride:							
Cement Temperature:## °F °C		Plug Displaced by:## lb/gal kg/m3 XXXX				Disp. Temperature:## °F °C				
Plug Bumped?Yes/No		Bump Pressure:#### psi MPa				Floats Held?Yes/No				
Cement Returns:## bbl m3		Returns Density:## lb/gal kg/m3				Returns Temperature:## °F °C				
Comment										

# Summary Report



Crew: \_\_\_\_\_

Job Start Date: 3/9/2015

Sales Order #: 0902207697  
WO #: 0902207697  
PO/AFE #: NACustomer: WHITING OIL & GAS CORP -  
EBUS  
UWI / API Number: 05-123-38598-00  
Well Name: RAZOR  
Well No: 11 H-0215AField: WILDCAT  
County/Parish: WELD  
State: COLORADO  
Latitude: 40.854661  
Longitude: -103.824558  
Sect / Twn / Rng: 11/10/58Job Type: CMT SURFACE  
CASING BOM  
Service Supervisor: Joseph Scileppi  
Cust Rep Name: TYSON DENTON  
Cust Rep Phone #:**Remarks:**

<b>The Information Stated Herein Is Correct</b>	Customer Representative Signature	Date
	Customer Representative Printed Name	

## 1.0 Real-Time Job Summary

### 1.1 Job Event Log

Type	Seq. No.	Activity	Graph Label	Date	Time	Source	Comb Pump Rate (bbl/min)	DH Density (ppg)	PS Pump Press (psi)	Recirc Density (ppg)	Comments
Event	1	Call Out	Call Out	3/8/2015	22:00:00	USER					
Event	2	Crew Leave Yard	Arrive At Loc	3/9/2015	02:15:00	USER					
Event	3	Arrive At Loc	Arrive At Loc	3/9/2015	02:15:00	USER					RIG WAS STILL TRIPPING DP UPON ARRIVAL
Event	4	Rig-Up Lines	Rig-Up Completed	3/9/2015	07:00:00	USER					JSA W/ CREW
Event	5	Rig-Up Completed	Rig-Up Completed	3/9/2015	08:00:00	USER					
Event	6	Pre-Job Safety Meeting	Pre-Job Safety Meeting	3/9/2015	08:30:00	USER	0.00	0.01	-11.00	0.00	JSA W/ ALL INVOLVED PERSONNEL
Event	7	Start Job	Start Job	3/9/2015	08:40:02	COM5	0.00	9.02	-17.00	8.39	
Event	8	Test Lines	Test Lines	3/9/2015	08:46:08	COM5	0.00	8.34	3599.00	8.39	TESTED LINES TO 3000 PSI FOR 5 MIN. NO VISIBLE LEAKS
Event	9	Pump Spacer 1	Pump Spacer 1	3/9/2015	08:51:09	COM5	0.00	8.27	-4.00	8.31	PUMPED 20 BBL5 MUD FLUSH, WITH DYE IN FIRST TEN AT 2.5 BPM AT 12 PSI
Event	10	Check Weight	Check weight	3/9/2015	09:03:38	COM5	0.00	8.28	-22.00	12.49	
Event	11	Pump Lead Cement	Pump Lead Cement	3/9/2015	09:04:42	COM5	2.40	9.17	-1.00	12.49	PUMPED 380 SKS OR 146.8 BBL5 12.5 SWIFCEM AT 7BPM AT 193 PSI
Event	12	Check Weight	Check weight	3/9/2015	09:12:06	COM5	4.10	12.61	49.00	12.52	
Event	13	Check Weight	Check weight	3/9/2015	09:24:22	COM5	7.10	12.67	194.00	12.47	
Event	14	Pump Tail Cement	Pump Tail Cement	3/9/2015	09:34:02	COM5	5.50	13.80	129.00	14.12	PUMPED 210 SKS OR 57.5 BBL5 AT 6 BPM AT 229 PSI
Event	15	Shutdown	Shutdown	3/9/2015	09:45:25	COM5	0.00	0.42	-39.00	0.19	

# HALLIBURTON

Customer: WHITTING OIL & GAS CORP - EBUS

Job: 902207697

Case: Case 1

Event	16	Drop Top Plug	Drop Top Plug	3/9/2015	09:50:23	COM5	0.00	0.44	-51.00	7.97	PLUG PRE LOADED AND WITNESSED BY DRILLER
Event	17	Pump Displacement	Pump Displacement	3/9/2015	09:50:26	COM5	0.00	0.44	-51.00	7.73	PUMPED 138.9 BBL5 OF H2O AT 8 BPM AT 356 PSI, GOT 81BBL5 OF CMT BACK TO SURFACE, CALCULATED WAS 40.7 BACK ON GAUGED HOLE
Event	18	Bump Plug	Bump Plug	3/9/2015	10:25:50	COM5	0.00	8.28	1029.00	0.19	BUMPED PLUG AT 561 PSI
Event	19	Other	Other	3/9/2015	10:27:07	COM5	0.00	8.29	1029.00	0.19	CHECKED FLOATS GOT 2 BBL5 BACK
Event	20	Pressure Up Well	Pressure Up Well	3/9/2015	10:31:42	COM5	0.00	8.31	1592.00	0.19	1500 PSI CASING TEST FOR 15 MIN
Event	21	End Job	End Job	3/9/2015	10:50:00	COM5	0.00	8.25	-59.00	0.19	

iCem Service

(v. 4.1.107)

Created: Monday, March 09, 2015



## **HALLIBURTON ENERGY SERVICES**

---

### **M. S. D. S. RECEIPT DOCUMENT**

This receipt page is intended for use with Material Safety Data Sheets supplied by Halliburton Energy Services. The recipients of these data sheets should consult the OSHA Safety and Health Standards (29 CFR 1910), particularly subpart G - Occupational Health and Environmental Control, and subpart I - Personal Protective Equipment, for general guidance on control of potential Occupational Health and Safety Hazards.

This document provides the customer the instructions necessary to utilize the M. S. D. S. Safety Sheets and confirms that Halliburton Energy Services offers the Customer the communication for discussion on Chemical Safety of the provided materials.

---

Customer Signature

Company :

WHITING OIL & GAS CORP - EBUS

Lease & Well Name :

RAZOR

Ticket # :

0902207697

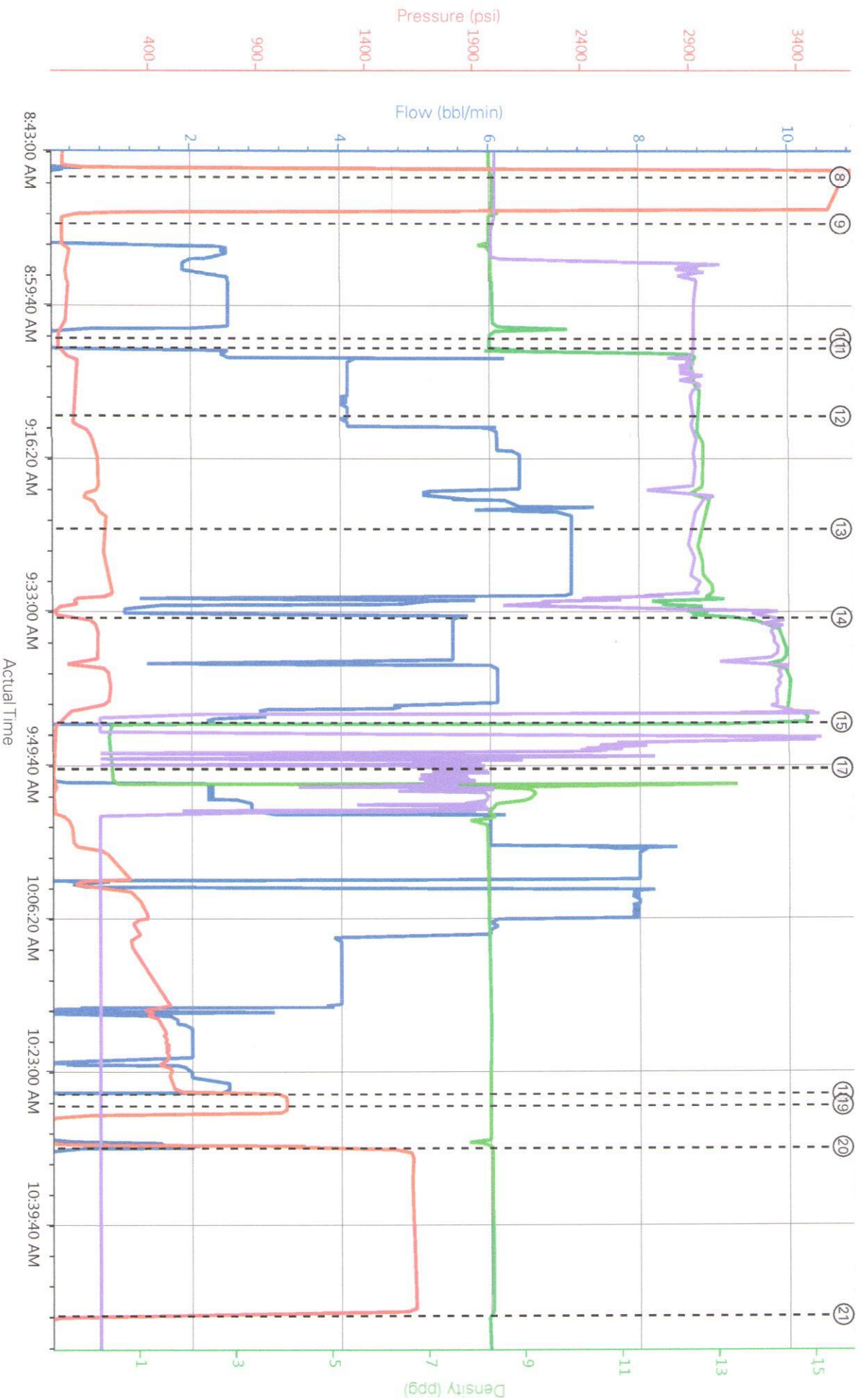
Location :

Fort Lupton, CO, USA(0201)

(To be completed by Service Supervisor)



WHITING RAAZOR 11 H-0215A



- 1 Call Out n/a;n/a;n/a;n/a
- 2 Arrive At Loc n/a;n/a;n/a;n/a
- 3 Rig-Up Completed n/a;n/a;n/a;n/a
- 4 Pre-Job Safety Meeting 0:0,01;-11,10
- 5 Start Job 0:9,02;-17,8,39
- 6 Pump Spacer 1 0:8,27;-4;8,32
- 7 Pump Lead Cement 2.4
- 8 Test Lines 0:8,33;35,9;8,39
- 9 Check weight 0:8,28;-22,12,49
- 10 Check weight 4,1,12,6,7