

LEGEND:

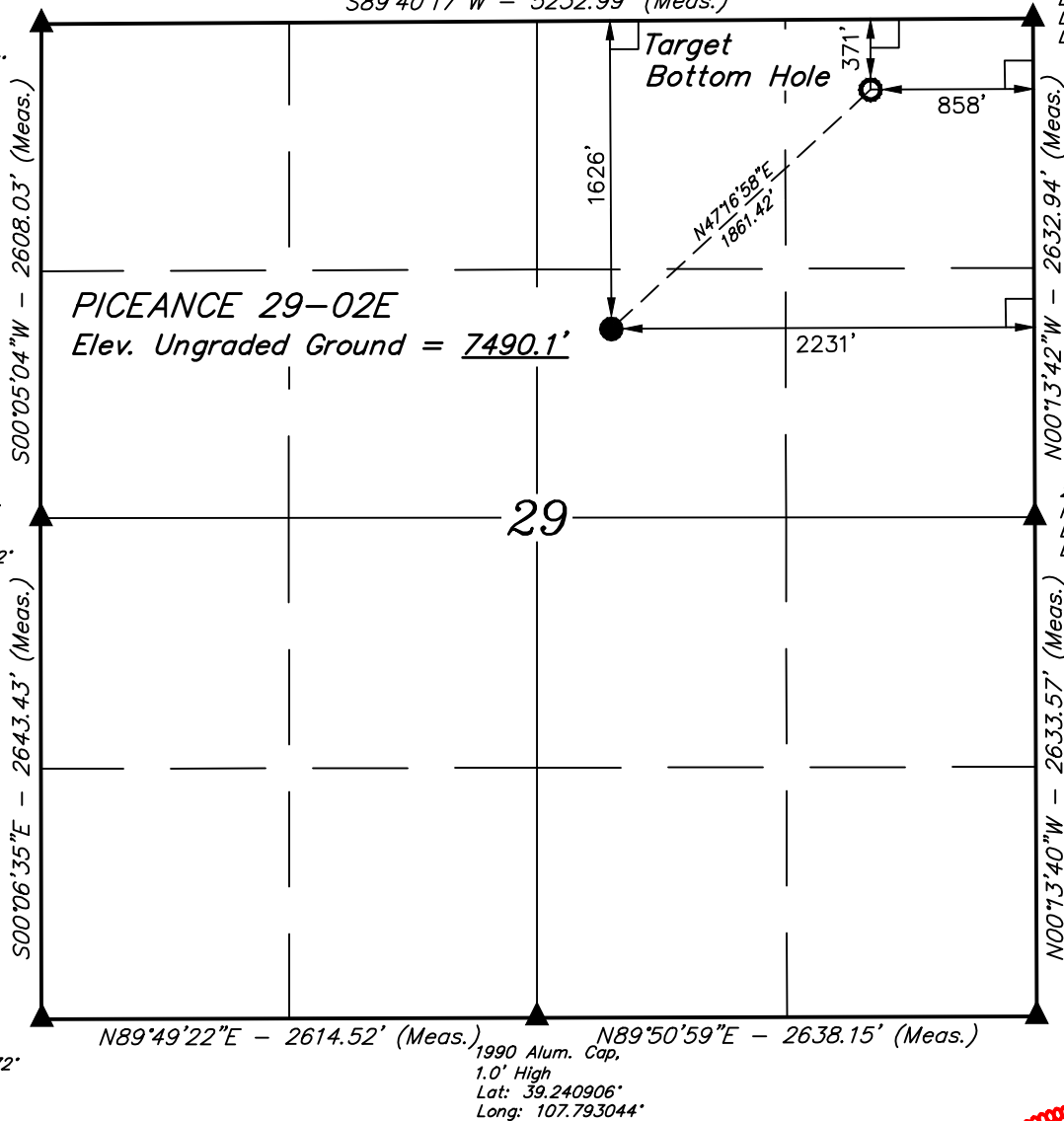
- = 90° SYMBOL
 ● = PROPOSED WELLHEAD.
 ○ = TARGET BOTTOM HOLE.
 ▲ = SECTION CORNERS LOCATED.

T9S, R93W, 6th P.M.

2007 Alum. Cap,
#17492, 0.7' High,
Steel Post
Lat: 39.255294°
Long: 107.802283°

S89°40'17"W - 5232.99' (Meas.)

Set Marked Stone,
E-W Fenceline
Lat: 39.255381°
Long: 107.783811°



1990 Alum. Cap,
0.2' High, Stones,
Fiberglass Marker
Lat: 39.248136°
Long: 107.802292°

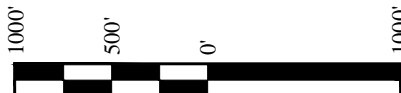
2011 Alum. Cap,
Flush W/Ground
Lat: 39.248153°
Long: 107.783772°

1990 Alum. Cap,
1.1' High
Lat: 39.240881°
Long: 107.802272°

1990 Alum. Cap,
1.0' High
Lat: 39.240906°
Long: 107.793044°

1990 Alum. Cap,
1.0' High, Stones,
Fiberglass Marker
Lat: 39.240925°
Long: 107.783733°

PDOP = 1.9

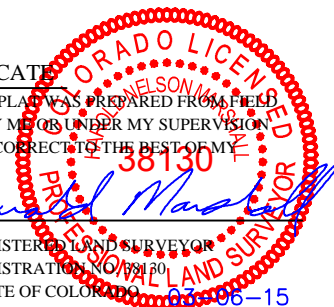


NAD 83 (TARGET BOTTOM HOLE)	NAD 83 (SURFACE LOCATION)
LATITUDE = 39°15'15.65" (39.254347)	LATITUDE = 39°15'03.17" (39.250881)
LONGITUDE = 107°47'12.60" (107.786833)	LONGITUDE = 107°47'29.98" (107.791661)
UTM NAD 83 / ZONE 13	UTM NAD 83 / ZONE 13
N: 14267375.03 E: 851476.27	N: 14266154.75 E: 850070.73

CERTIFICATE

THIS IS TO CERTIFY THAT THE ABOVE PLAT WAS PREPARED FROM FIELD NOTES OF ACTUAL SURVEYS MADE BY ME OR UNDER MY SUPERVISION AND THAT THE SAME ARE TRUE AND CORRECT TO THE BEST OF MY KNOWLEDGE AND BELIEF.

REGISTERED LAND SURVEYOR
REGISTRATION NO. 38130
STATE OF COLORADO

**BASIS OF BEARINGS**

BASIS OF BEARINGS IS A G.P.S. OBSERVATION

BASIS OF ELEVATION

BENCH MARK (19 RDS) LOCATED IN THE SE 1/4 OF SECTION 16, T9S, R93W, 6th P.M., TAKEN FROM THE SOUTH MAMM PEAK, QUADRANGLE, COLORADO, 7.5 MINUTE QUAD. (TOPOGRAPHIC MAP) PUBLISHED BY THE UNITED STATES DEPARTMENT OF THE INTERIOR, GEOLOGICAL SURVEY. SAID ELEVATION IS MARKED AS BEING 7252 FEET.

**PICEANCE ENERGY, LLC**

PICEANCE 29-02E
SW 1/4 NE 1/4, SECTION 29, T9S, R93W, 6th P.M.
MESA COUNTY, COLORADO

SURVEYED BY: BRIAN BAKER, B.B.	DATE: 02-27-15
DRAWN BY: M.D.	DATE DRAWN: 03-06-15
SCALE: 1" = 1000'	REVISED: 00-00-00

WELL LOCATION PLAT

UELS, LLC
Corporate Office * 85 South 200 East
Vernal, UT 84078 * (435) 789-1017