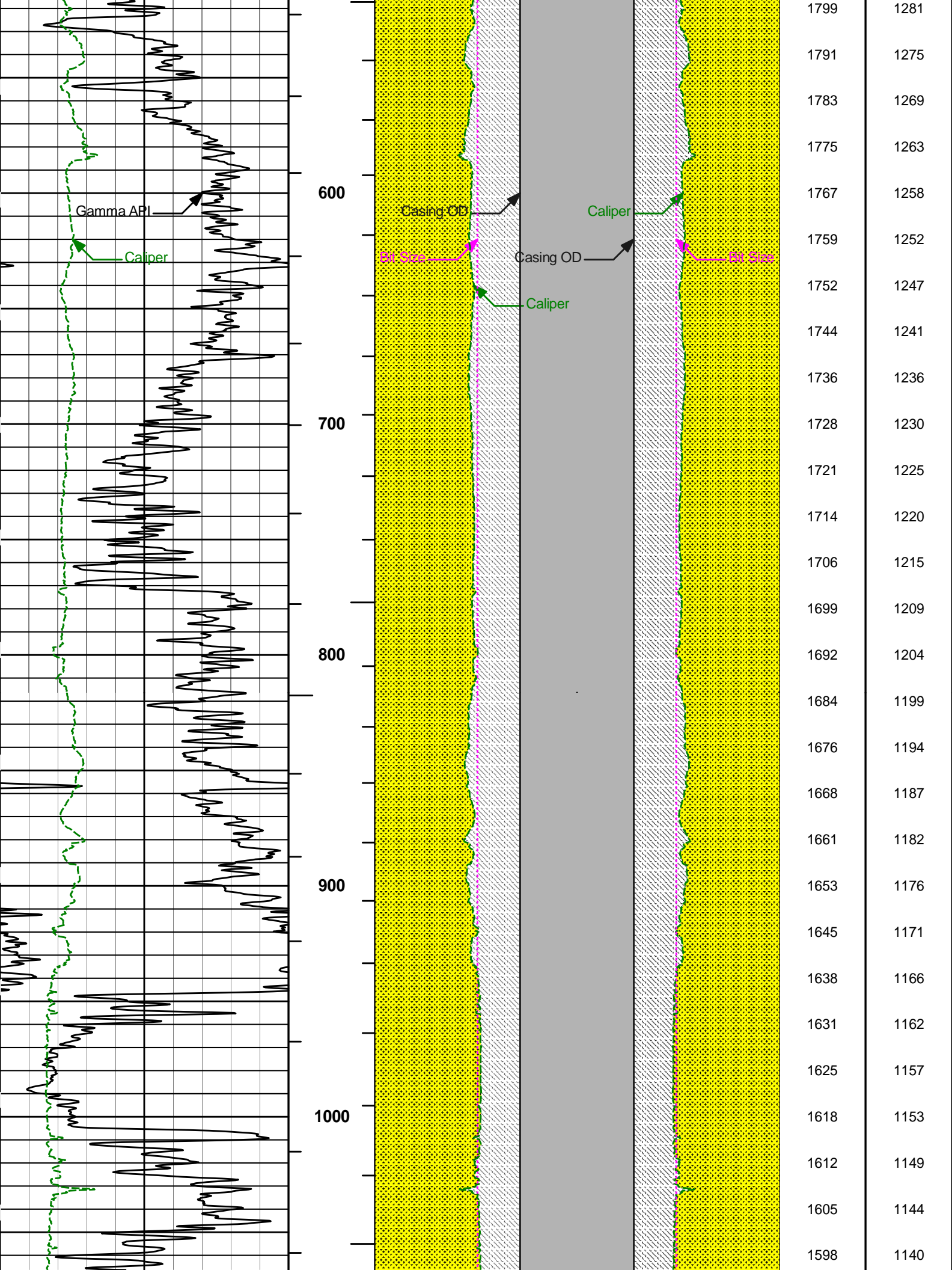


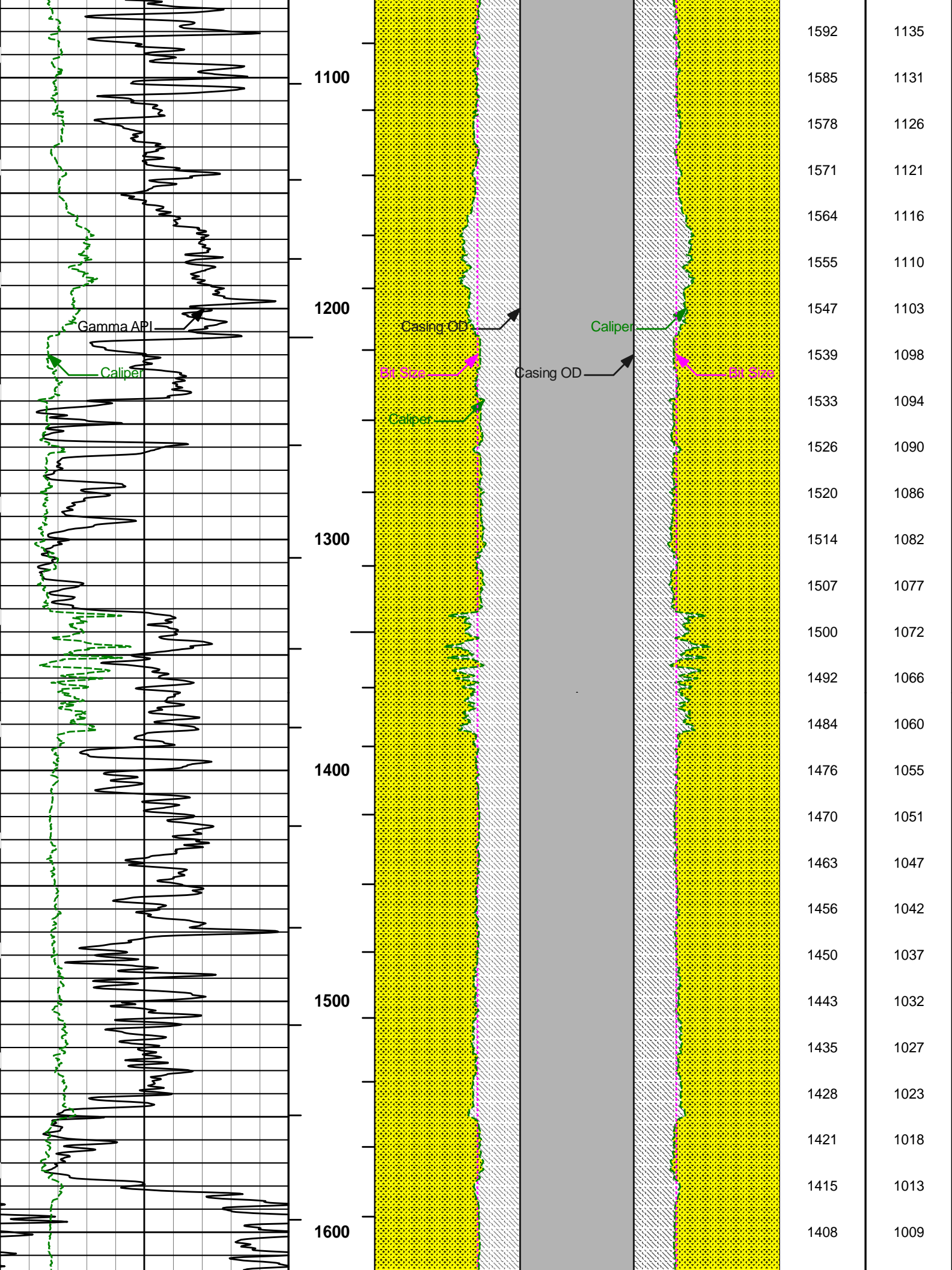
**BOREHOLE VOLUME
PLOT**

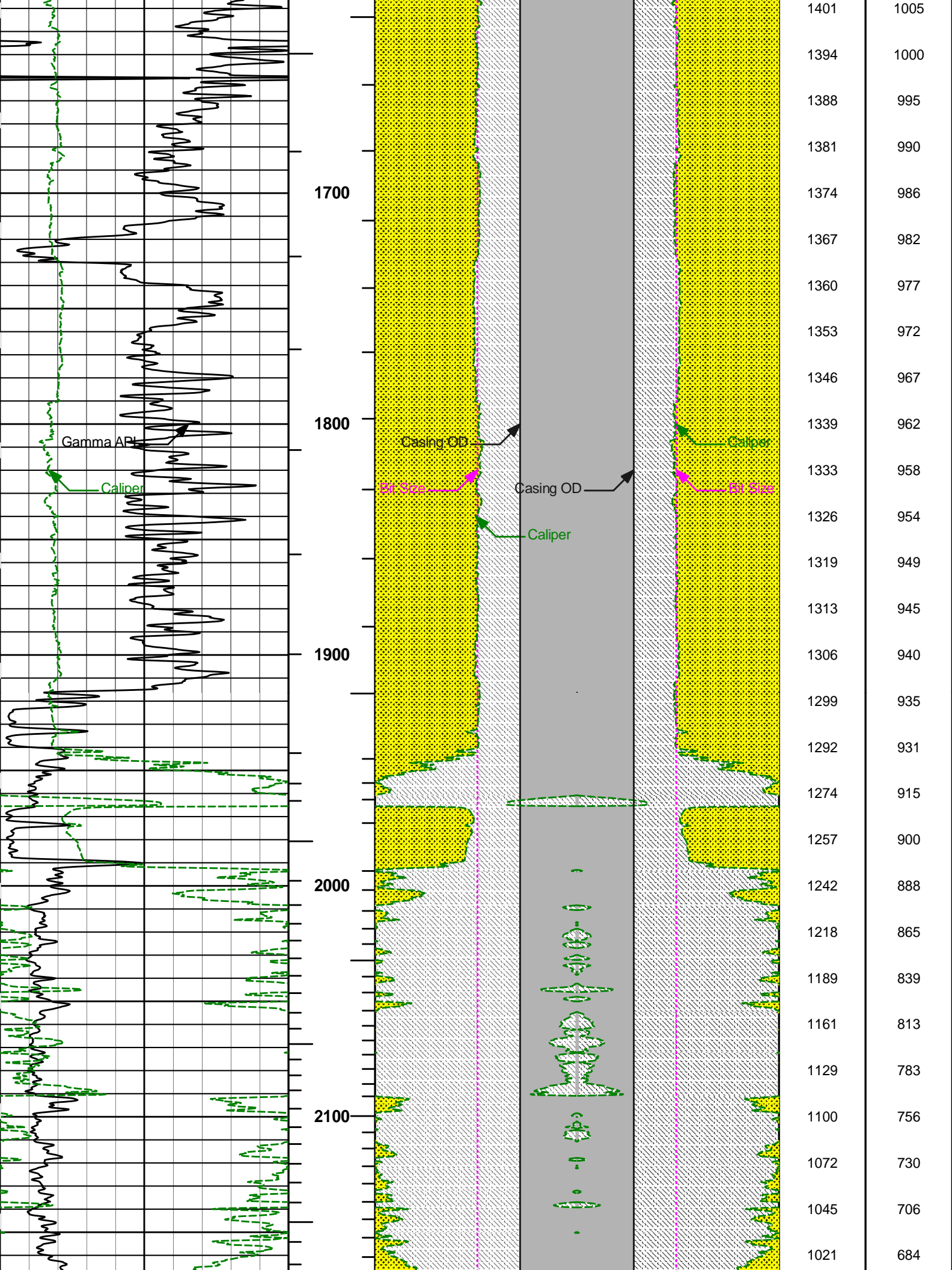
----- Fold here -----

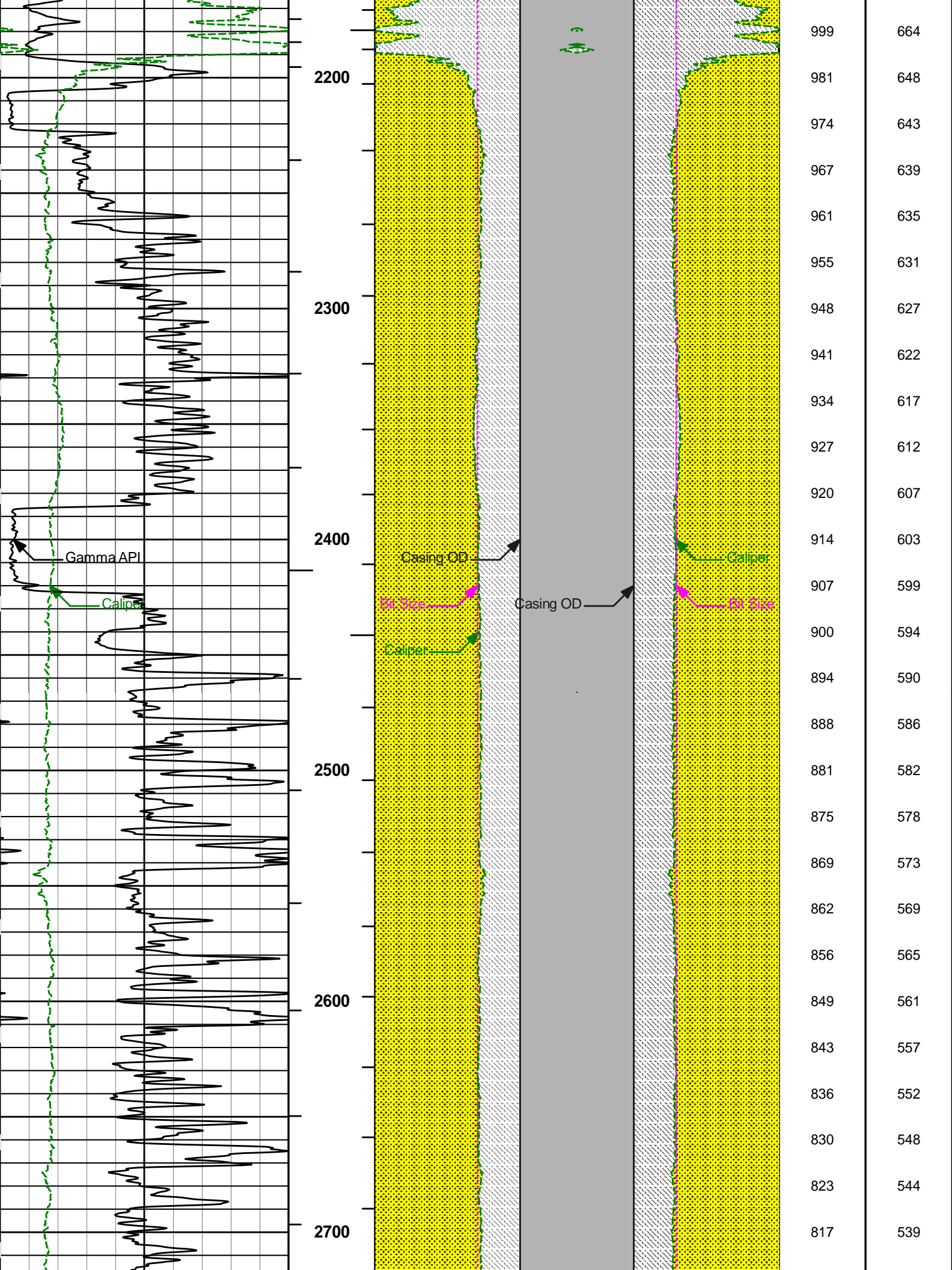
LOGGING DATA

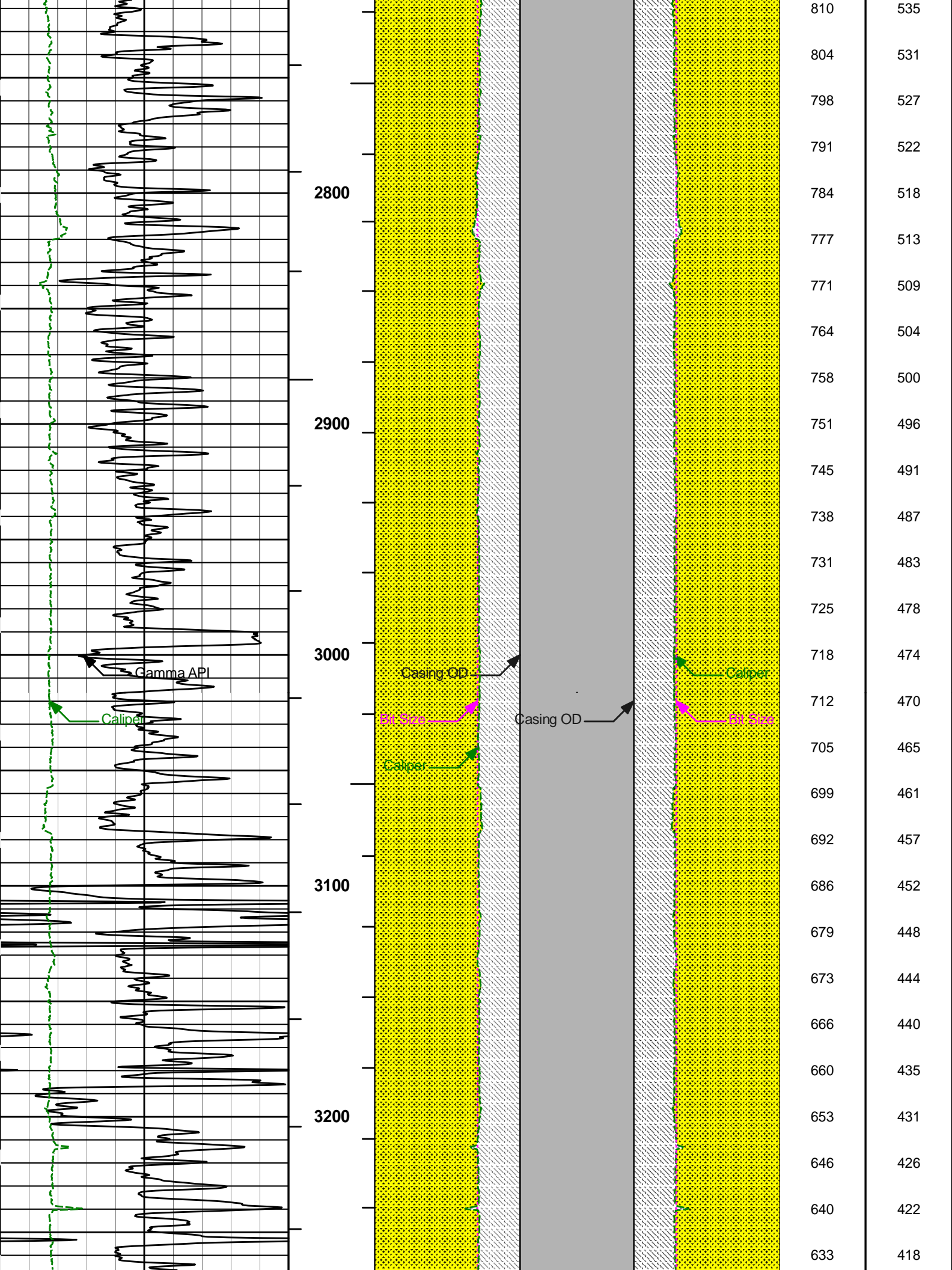
| GENERAL | | | GAMMA | | ACOUSTIC | | | DENSITY | | | NEUTRON | | | |
|--|-------|-----|--------|-------|----------|-------|-------|--------------|-------|-------|-----------|-------|-------|--------|
| Run | Depth | | Speed | Scale | | Scale | | Matrix | Scale | | Matrix | Scale | | Matrix |
| No. | From | To | ft/min | L | R | L | R | | L | R | | L | R | |
| ONE | 5209 | 420 | REC | 0 API | 200 API | 30 % | -10 % | 47.6 usec/ft | 30 % | -10 % | 2.71 g/cc | 30 % | -10 % | LIME |
| ONE | 420 | 50 | REC | 0 API | 200 API | | | | | | | | | |
| | | | | | | | | | | | | | | |
| | | | | | | | | | | | | | | |
| | | | | | | | | | | | | | | |
| DIRECTIONAL INFORMATION | | | | | | | | | | | | | | |
| Maximum Deviation @ | | | | | | | | KOP @ | | | | | | |
| Remarks: | | | | | | | | | | | | | | |
| RUN ONE: RWCH/GTET/DSNT/SDLT/FLEX/BSAT/ACRT/BN | | | | | | | | | | | | | | |
| BORHOLE RUGOSITY, TENSION PULLS, LCM ADDITIVE, AND WASHOUTS MAY EFFECT LOG QUALITY AND REPEATABILITY | | | | | | | | | | | | | | |
| CHLORIDES REPORTED TO BE 3000 ppm | | | | | | | | | | | | | | |
| ANNULAR HOLE VOLUME CALCULATED USING 4.5-INCH CASING. | | | | | | | | | | | | | | |
| REPEAT DATA LOGGED USING DOLOMITE MATRIX | | | | | | | | | | | | | | |
| | | | | | | | | | | | | | | |
| | | | | | | | | | | | | | | |
| | | | | | | | | | | | | | | |
| YOU CREW TODAY: J. VIGIL, B. CALDWELL, A. KOBE | | | | | | | | RIG: H2 1 | | | | | | |
| THANK YOU FOR CHOOSING HALLIBURTON ENERGY SERVICES, GRAND JUNCTION, CO (970) 523-3600 | | | | | | | | | | | | | | |
| <p>HALLIBURTON DOES NOT GUARANTEE THE ACCURACY OF ANY INTERPRETATION OF THE LOG DATA, CONVERSION OF LOG DATA TO PHYSICAL ROCK PARAMETERS OR RECOMMENDATIONS WHICH MAY BE GIVEN BY HALLIBURTON PERSONNEL OR WHICH APPEAR ON THE LOG OR IN ANY OTHER FORM. ANY USER OF SUCH DATA, INTERPRETATIONS, CONVERSIONS, OR RECOMMENDATIONS AGREES THAT HALLIBURTON IS NOT RESPONSIBLE EXCEPT WHERE DUE TO GROSS NEGLIGENCE OR WILLFUL MISCONDUCT, FOR ANY LOSS, DAMAGES, OR EXPENSES RESULTING FROM THE USE THEREOF.</p> | | | | | | | | | | | | | | |
| HALLIBURTON | | | | | | | | | | | | | | |

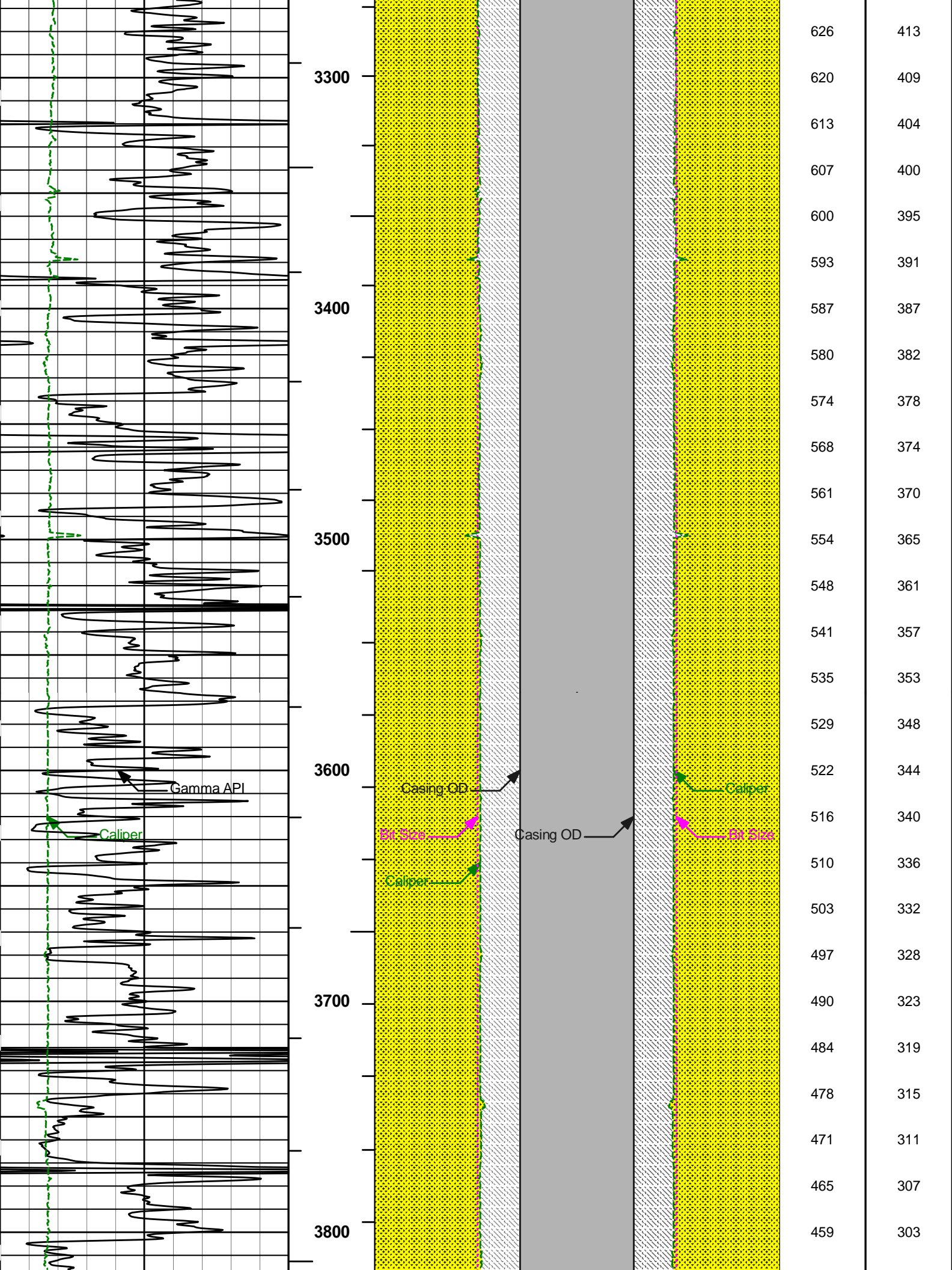


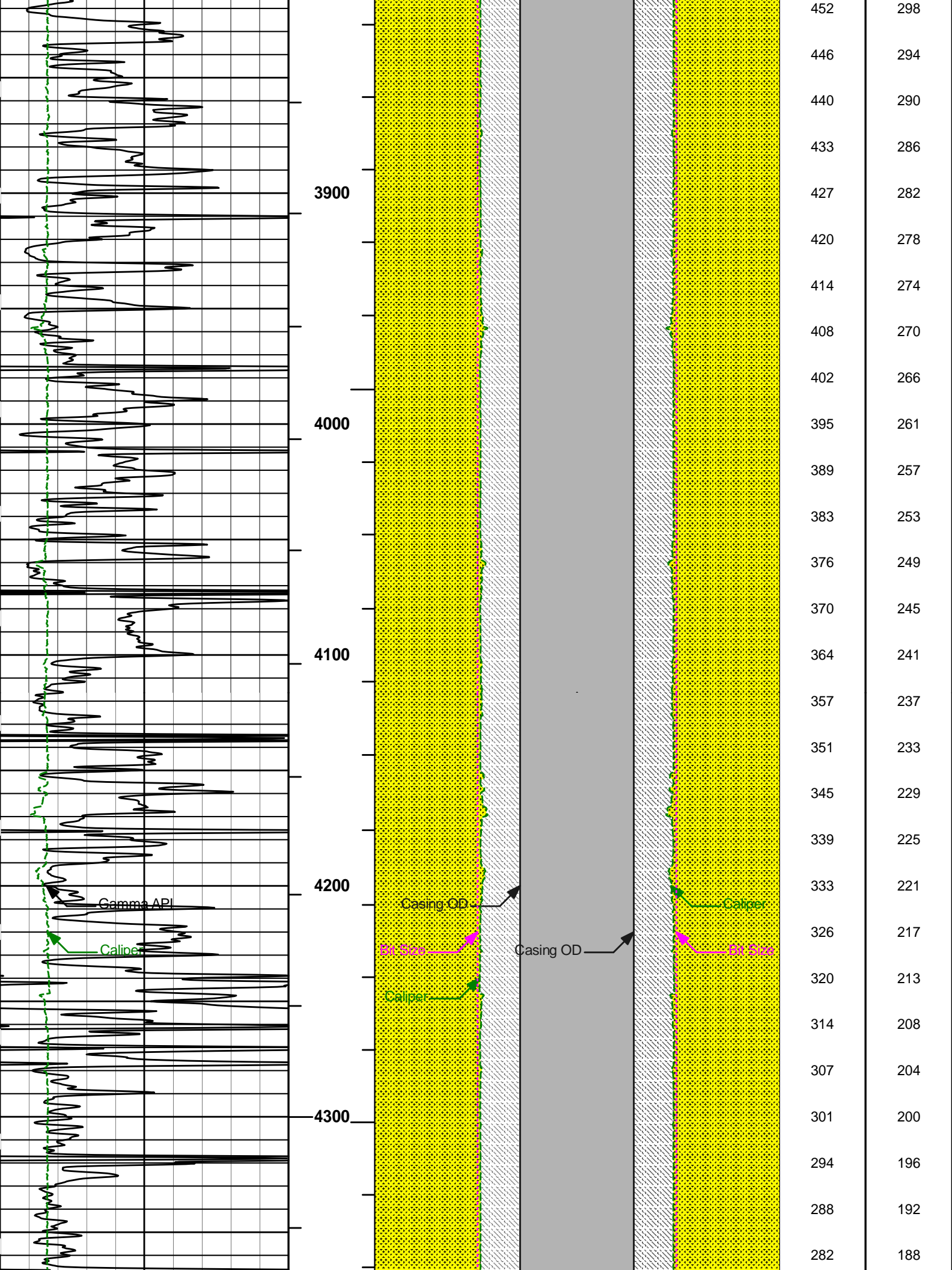


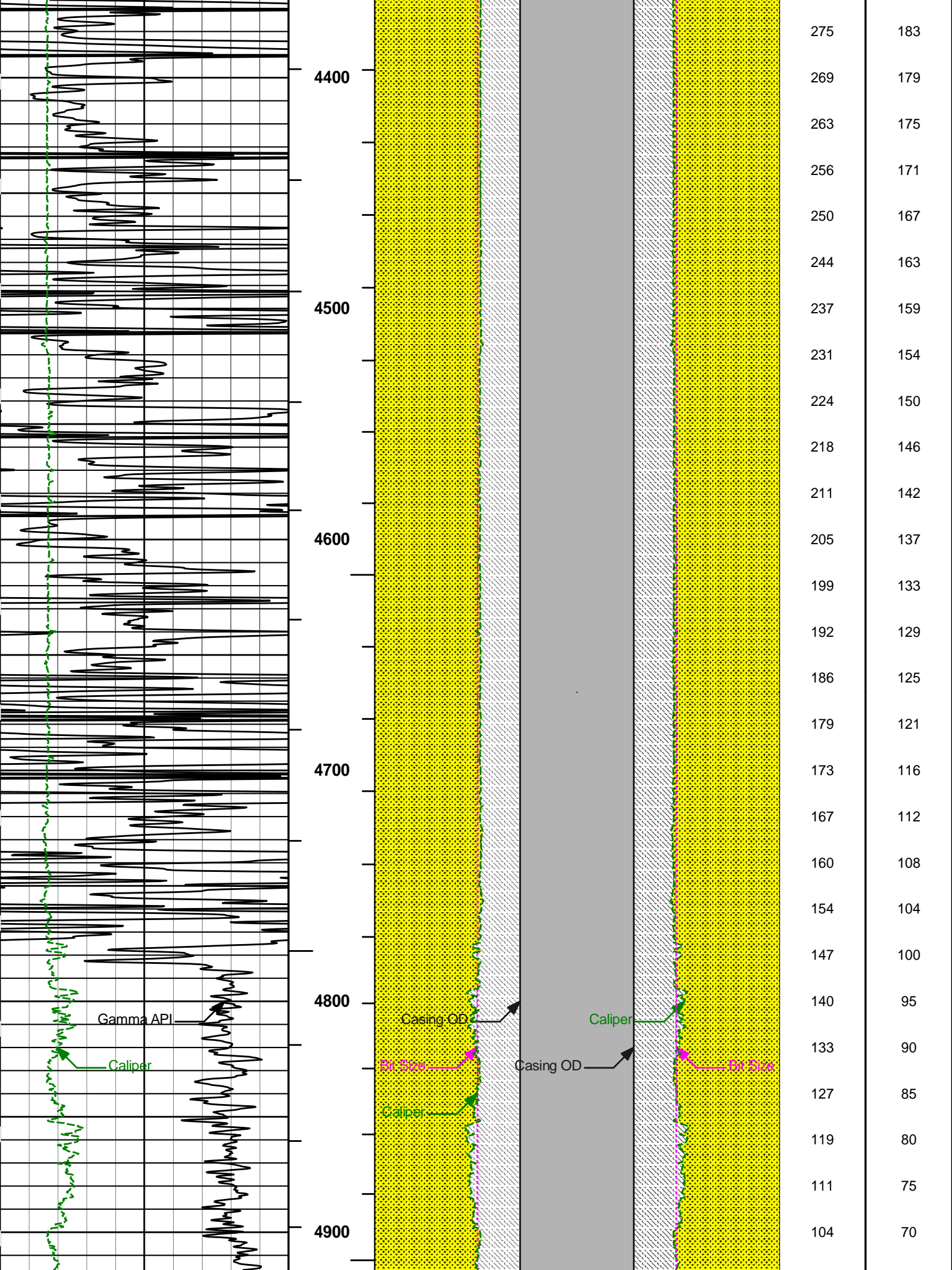


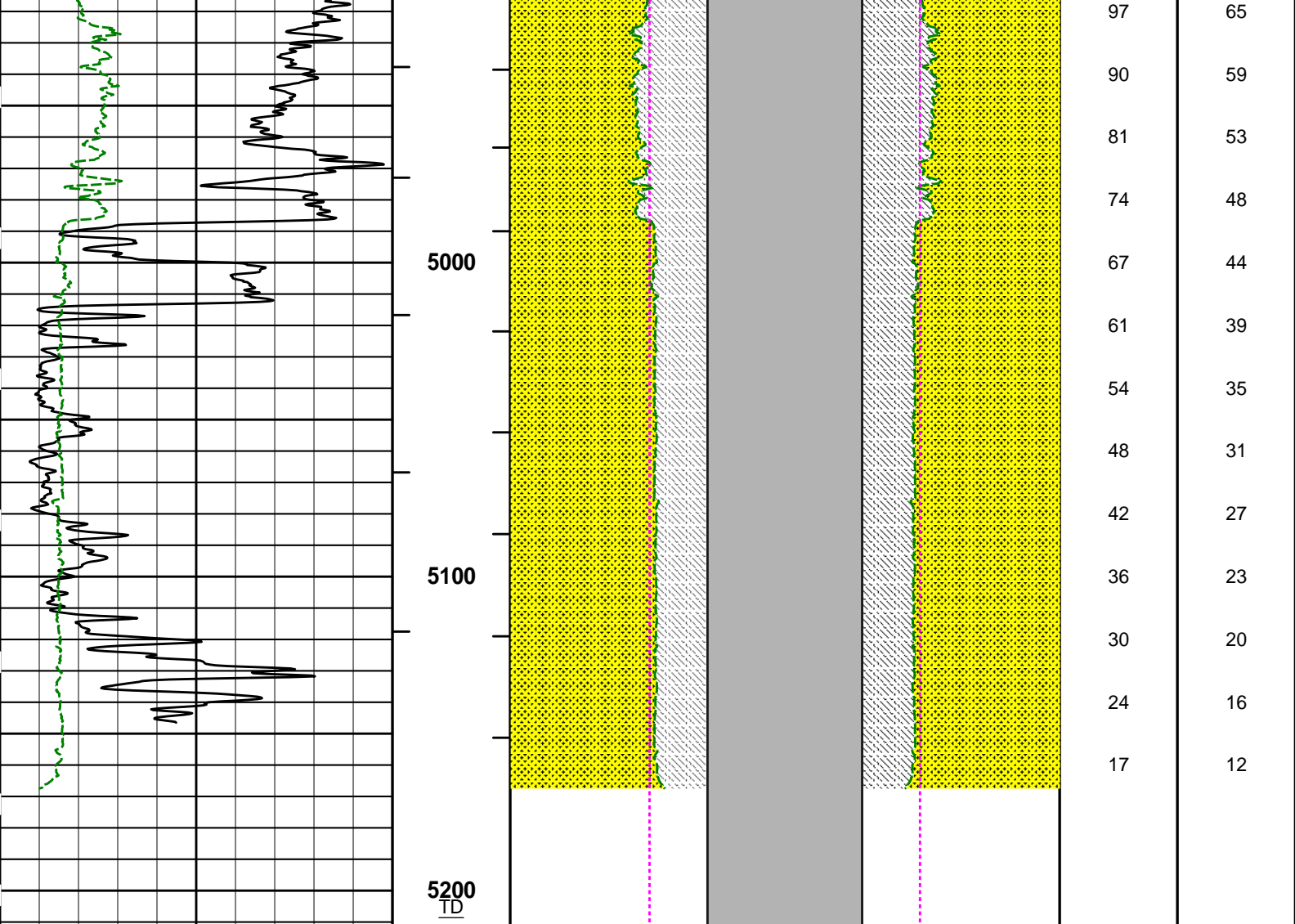












| | | | | | | | | | | |
|---|-----------|-----|---------|----|-----------|-----|-----------|----|------|------|
| 0 | Gamma API | 150 | 1 : 600 | 16 | Caliper | 0 0 | Caliper | 16 | BHVT | AHVT |
| | api | | | | inches | | inches | | | |
| 6 | Caliper | 16 | BHVT | | Casing OD | | Casing OD | | | |
| | inches | | AHVT | 16 | Bit Size | 0 0 | Bit Size | 16 | | |
| | | | | | inches | | inches | | | |

HALLIBURTON

Plot Time: 16-Mar-15 09:34:26
 Plot Range: 400 ft to 5211.92 ft
 Data: BHORSE_T_W_5_21\Well Based\MAIN*
 Plot File: \\BHV\IQ_BHV_SDL_RM

AHV USES 4.5" CASING

| | |
|---------|-------------------------|
| COMPANY | BAYHORSE PETROLEUM, LLC |
| WELL | TRADE WINDS 5-21 |
| FIELD | LEFT HAND |
| COUNTY | KIOWA |
| STATE | CO |

HALLIBURTON

**BOREHOLE VOLUME
PLOT**