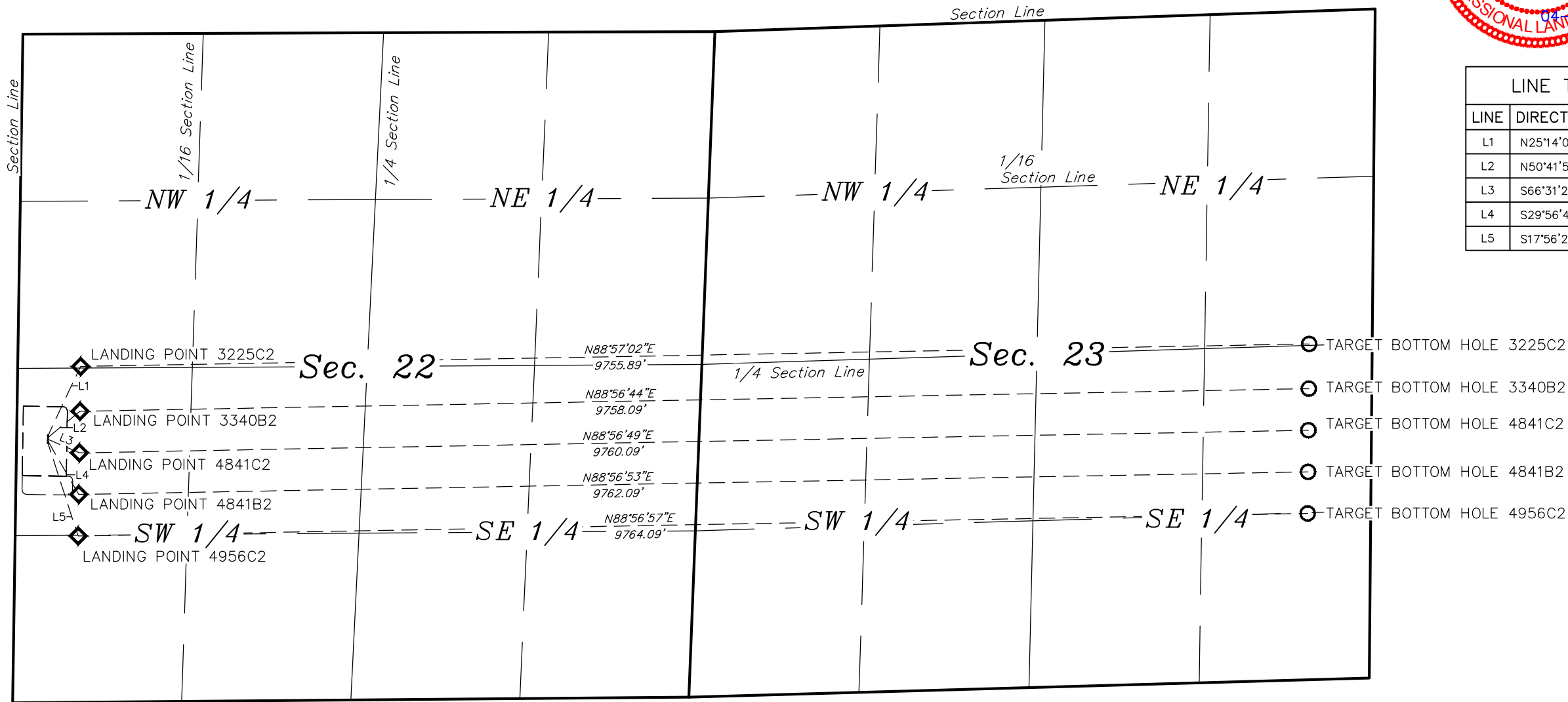




- Wellhead
- ◊ Landing Point
- Target
- Bottom Hole



LINE TABLE		
LINE	DIRECTION	LENGTH
L1	N25°14'01"E	605.87'
L2	N50°41'51"E	327.10'
L3	S66°31'22"E	270.86'
L4	S29°56'41"E	488.07'
L5	S17°56'27"E	775.75'

NOTES:

BILL BARRETT CORPORATION
ANSCHUTZ STATE 5-62-22 23 NWSW PAD
#5-62-22-4956C2, 4841B2, 4841C2, 3340B2 & 3225C2
SECTION 22, T5N, R62W, 6th P.M.
NW 1/4 SW 1/4
WELD COUNTY, COLORADO



UELS, LLC
Corporate Office * 85 South 200 East
Vernal, UT 84078 * (435) 789-1017

DRAWN BY: K.B.	DATE DRAWN: 04-06-15
SCALE: 1" = 1000'	REVISED: 00-00-00
MULTI-WELL PLAN	FIGURE #6