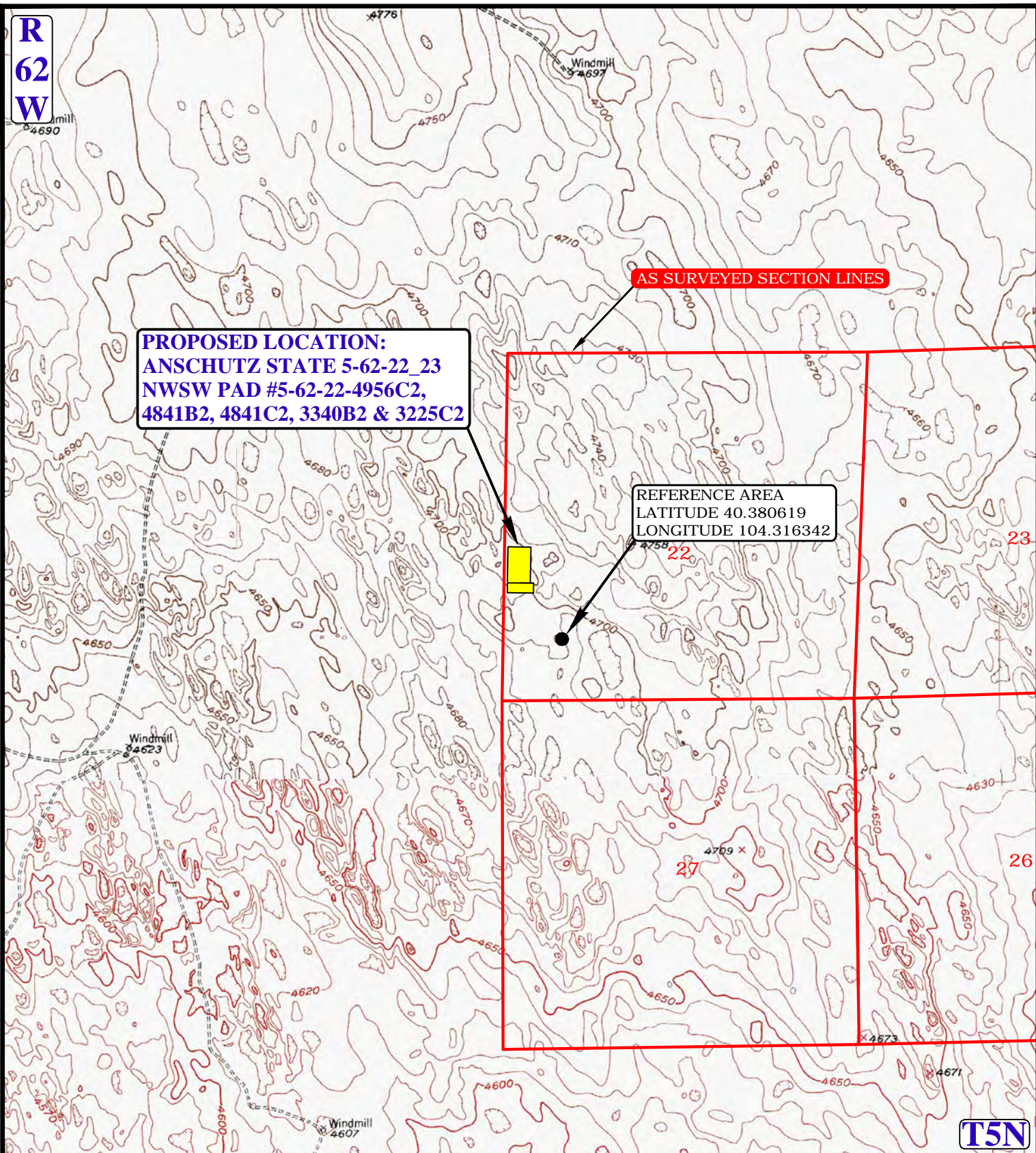


**R
62
W**



LEGEND:



UELS, LLC
Corporate Office * 85 South 200 East
Vernal, UT 84078 * (435) 789-1017



BILL BARRETT CORPORATION

ANSCHUTZ STATE 5-62-22_23 NWSW PAD
#5-62-22-4956C2, 4841B2, 4841C2, 3340B2 & 3225C2
SECTION 22, T5N, R62W, 6th P.M.
NW 1/4 SW 1/4
WELD COUNTY, COLORADO

DRAWN BY: J.L.G.	DATE DRAWN: 04-09-15
SCALE: 1" = 2000'	REV: 00-00-00
REFERENCE AREA MAP	REF TOPO