

DALEY LAND SURVEYING, INC. 970.302.4159

LOCATION PICTURES  
BRINGELSON 1-28, D/A WELL

SECTION: 28  
TOWNSHIP: 9N  
RANGE: 58W

DATE: 4/23/15



LOOKING NORTH



LOOKING WEST



LOOKING EAST

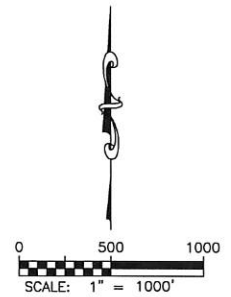
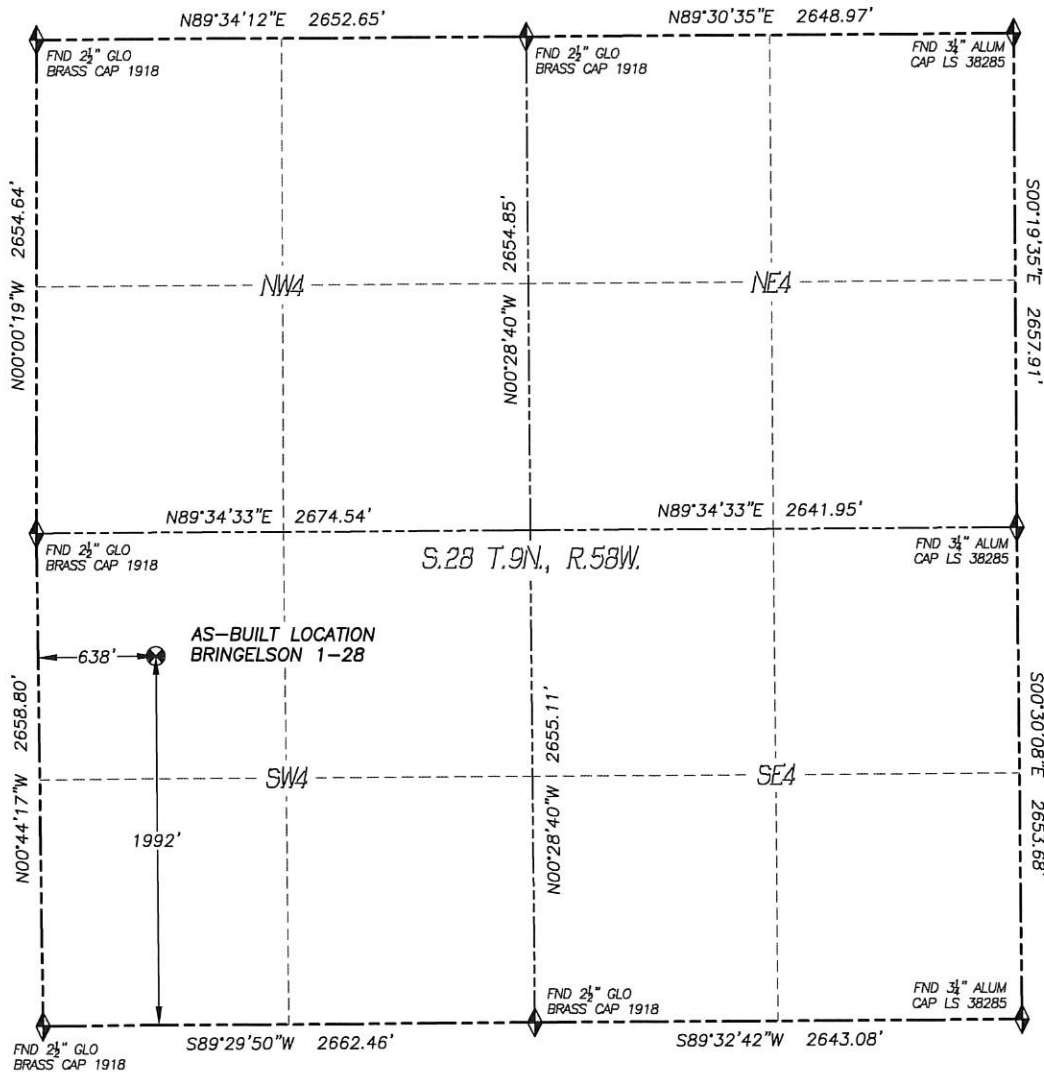


LOOKING SOUTH

# WELL AS-BUILT SURVEY

## BRINGELSON 1-28

SECTION: 28  
TOWNSHIP: 9N  
RANGE: 58W



### LEGEND

- FOUND MONUMENT AS DESCRIBED
- PROPOSED WELL
- EXISTING WELL
- BOTTOM HOLE
- ABANDONED WELL
- CALCULATED POSITION

IN ACCORDANCE WITH A REQUEST FROM REGGY GRAY OF NOBLE ENERGY INC., DALEY LAND SURVEYING, INC. HAS DETERMINED THE SURFACE LOCATION OF THE BRINGELSON 1-28 WELL TO BE 1992' FSL, 638' FWL, AS MEASURED AT NINETY (90) DEGREES FROM THE SECTION LINES OF SECTION 28, TOWNSHIP 9 NORTH, RANGE 58 WEST, OF THE 6TH PRINCIPAL MERIDIAN, WELD COUNTY, COLORADO.

I HEREBY STATE THAT THIS WELL AS-BUILT WAS PREPARED BY ME OR UNDER MY DIRECT SUPERVISION, THAT THE WORK WAS COMPLETED ON 4/23/201 FOR AND ON BEHALF OF NOBLE ENERGY, INC., AND THAT THIS MAP DOES NOT REPRESENT A BOUNDARY SURVEY, IT IS NOT A LAND SURVEY PLAT OR AN IMPROVEMENT SURVEY PLAT AND IT IS NOT TO BE RELIED UPON FOR THE ESTABLISHMENT OF FENCE, BUILDING OR OTHER FUTURE IMPROVEMENT LINES.

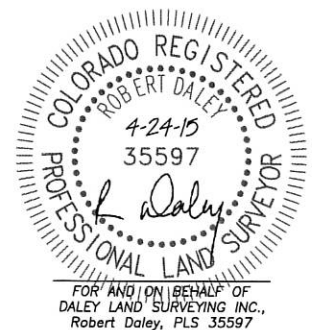
### NOTES:

- 1) BEARINGS FOR THIS MAP ARE ASSUMED AND BASED UPON GPS OBSERVATIONS MADE BETWEEN MONUMENTS LOCATED AT THE SOUTHEAST CORNER AND SOUTH QUARTER CORNER OF SECTION 28, T.9N., R.58W.
- 2) HORIZONTAL DATUM IS NAD83.
- 3) VERTICAL DATUM IS NAVD88 AND ORIGINATES FROM THE LOCAL C.O.R.S. NETWORK, UTILIZING THE GEOID12A MODEL.
- 4) ELEVATION SHOWN IS AT TOP OF CASING PLUG, 2.4'± BELOW EXISTING GROUND ELEVATION.
- 5) SURFACE USE: RANGE LAND.
- 6) INST. OPERATOR: TREVOR DALEY.

### NAD 83 LATITUDE AND LONGITUDE

#### SURFACE LOCATION:

LATITUDE: N40.72025°  
LONGITUDE: W103.87623°  
ELEV: 4861'  
PDOP: 1.6  
QTR/QTR: NW4/SW4



FOR AND ON BEHALF OF  
DALEY LAND SURVEYING, INC.,  
Robert Daley, PLS 35597

SHEET 1 OF 1