

610, 74

5 k 15 min

HALLIBURTON

iCem® Service

621, 50

621, 5
3, 5

WHITING OIL & GAS CORP - EBUS

For:

Date: Friday, March 27, 2015

RAZOR 11 H-1415A

Case 1

Job Date: Thursday, March 26, 2015

Sincerely,

| Fluid # | Stage Type | Fluid Name | Qty | Qty UoM | Mixing Density lbm/gal | Yield ft ³ /sack | Mix Fluid Gal | Rate bbl/min | Total Mix Fluid Gal |
|---------------------|--------------|----------------------------|----------------------|------------------------|---------------------------|--------------------------------|------------------|-----------------|---------------------------|
| 2 | Lead Cement | ECONOCEM (TM) SYSTEM | 425 | sack | 12.5 | 2.17 | | 6 | 12.35 |
| 12.35 Gal | | FRESH WATER | | | | | | | |
| 0.55 % | | HR-5, 50 LB SK (100005050) | | | | | | | |
| | | | | | | | | | |
| Fluid # | Stage Type | Fluid Name | Qty | Qty UoM | Mixing Density lbm/gal | Yield ft ³ /sack | Mix Fluid Gal | Rate bbl/min | Total Mix Fluid Gal |
| 3 | Tail Cement | EXPANDACEM (TM) SYSTEM | 160 | sack | 13.8 | 1.67 | | 6 | 7.73 |
| 0.10 % | | HR-5, 50 LB SK (100005050) | | | | | | | |
| 7.73 Gal | | FRESH WATER | | | | | | | |
| | | | | | | | | | |
| Fluid # | Stage Type | Fluid Name | Qty | Qty UoM | Mixing Density lbm/gal | Yield ft ³ /sack | Mix Fluid Gal | Rate bbl/min | Total Mix Fluid Gal |
| 4 | Displacement | Displacement | 228.8 | bbl | 8.33 | | | | |
| | | | | | | | | | |
| Cement Left In Pipe | Amount | 46 ft | Reason | | | | Shoe Joint | | |
| Mix Water: | pH ## | Mix Water Chloride: | ## ppm | Mix Water Temperature: | | | ## °F °C | | |
| Cement Temperature: | ## °F °C | Plug Displaced by: | ## lb/gal kg/m3 XXXX | Disp. Temperature: | | | ## °F °C | | |
| Plug Bumped? | Yes/No | Bump Pressure: | #### psi MPa | Floats Held? | | | Yes/No | | |
| Cement Returns: | ## bbl m3 | Returns Density: | ## lb/gal kg/m3 | Returns Temperature: | | | ## °F °C | | |
| Comment | | | | | | | | | |

The Road to Excellence Starts with Safety

| | | | |
|--|--------------------|------------------------------------|---------------------------|
| Sold To #: 366960 | Ship To #: 3272085 | Quote #: | Sales Order #: 0902257832 |
| Customer: WHITING OIL & GAS CORP - EBUS | | Customer Rep: WALTER | |
| Well Name: RAZOR | Well #: 11 H-1415A | API/UWI #: 05-123-38601-00 | |
| Field: WILDCAT | City (SAP): RAYMER | County/Parish: WELD | State: COLORADO |
| Legal Description: SE NE-11-10N-58W-2165FNL-395FEL | | | |
| Contractor: FRONTIER DRLG | | Rig/Platform Name/Num: FRONTIER 26 | |
| Job BOM: 7522 | | | |
| Well Type: HORIZONTAL OIL | | | |
| Sales Person: HALAMERICA\HX41066 | | Srv Supervisor: Brandon Nielson | |
| Job | | | |

| | | | |
|------------------------|--------|--|-------------------|
| Formation Name | | | |
| Formation Depth (MD) | Top | | Bottom |
| Form Type | | | BHST |
| Job depth MD | 6215ft | | Job Depth TVD |
| Water Depth | | | Wk Ht Above Floor |
| Perforation Depth (MD) | From | | To |

| Well Data | | | | | | | | | | |
|-------------------|------------|---------|-------|---------------|--------|-------|-----------|--------------|------------|---------------|
| Description | New / Used | Size in | ID in | Weight lbm/ft | Thread | Grade | Top MD ft | Bottom MD ft | Top TVD ft | Bottom TVD ft |
| Casing | 0 | 9.625 | 8.921 | 36 | LTC | J-55 | 0 | 1829 | | 1829 |
| Casing | 0 | 7 | 6.184 | 29 | LTC | L-80 | 0 | 6215 | | 6215 |
| Open Hole Section | | | 8.75 | | | | 1829 | 6215 | 0 | 6215 |

| Tools and Accessories | | | | | | | | | |
|-----------------------|---------|-----|------|----------|--|----------------|---------|-----|------|
| Type | Size in | Qty | Make | Depth ft | | Type | Size in | Qty | Make |
| Guide Shoe | 7 | | | 6215 | | Top Plug | 7 | | HES |
| Float Shoe | 7 | | | | | Bottom Plug | 7 | | HES |
| Float Collar | 7 | | | | | SSR plug set | 7 | | HES |
| Insert Float | 7 | | | | | Plug Container | 7 | | HES |
| Stage Tool | 7 | | | | | Centralizers | 7 | | HES |

| Miscellaneous Materials | | | | | | | | | | |
|-------------------------|--|------|--|------------|--|------|--|-----------|--|------|
| Gelling Agt | | Conc | | Surfactant | | Conc | | Acid Type | | Qty |
| Treatment Fld | | Conc | | Inhibitor | | Conc | | Sand Type | | Size |
| | | | | | | | | | | Conc |
| | | | | | | | | | | Qty |

| Fluid Data | | | | | | | | | | |
|-----------------|------------------------------|--------------------------|-----|---------|------------------------|-----------------------------|---------------|--------------|---------------------|--|
| Stage/Plug #: 1 | | | | | | | | | | |
| Fluid # | Stage Type | Fluid Name | Qty | Qty UoM | Mixing Density lbm/gal | Yield ft ³ /sack | Mix Fluid Gal | Rate bbl/min | Total Mix Fluid Gal | |
| 1 | 10.5 lb/gal Tuned Spacer III | Tuned Spacer III | 20 | bbl | 11.5 | 6.17 | | 6 | | |
| 37.58 gal/bbl | | FRESH WATER | | | | | | | | |
| 91 lbm/bbl | | BARITE, BULK (100003681) | | | | | | | | |

1.0 Real-Time Job Summary

1.1 Job Event Log

| Type | Seq. No. | Activity | Graph Label | Date | Time | Source | Comb Pump Rate (bbl/min) | DH Density (ppg) | PS Pump Press (psi) | Recirc Density (ppg) | Comments |
|-------|----------|------------------------|------------------------|-----------|----------|--------|-----------------------------|---------------------|------------------------|-------------------------|---|
| Event | 1 | Call Out | Call Out | 3/26/2015 | 15:00:00 | USER | | | | | |
| Event | 2 | Crew Leave Yard | Crew Leave Yard | 3/26/2015 | 18:00:00 | USER | | | | | PRE JOURNEY JSA W/ CREW |
| Event | 3 | Arrive At Loc | Arrive At Loc | 3/26/2015 | 20:15:00 | USER | | | | | RIG HAD 4 JOINTS TO RUN UPON ARRIVAL |
| Event | 4 | Rig-up Lines | Rig-up Lines | 3/26/2015 | 20:30:00 | USER | | | | | PRE RIG UP JSA W/ CREW |
| Event | 5 | Rig-Down Completed | Rig-Down Completed | 3/26/2015 | 21:15:00 | USER | | | | | |
| Event | 6 | Pre-Job Safety Meeting | Pre-Job Safety Meeting | 3/26/2015 | 22:30:00 | USER | 0.00 | 8.60 | 0.00 | 0.50 | JSA W/ ALL INVOLVED PERSONNEL |
| Event | 7 | Start Job | Start Job | 3/26/2015 | 22:54:25 | COM5 | 0.00 | 8.56 | 0.00 | 11.89 | |
| Event | 8 | Test Lines | Test Lines | 3/26/2015 | 22:58:12 | COM5 | 0.00 | 8.32 | 118.00 | 11.51 | TESTED LINES TO 4000 PSI, NO VISIBLE LEAKS |
| Event | 9 | Pump Spacer 1 | Pump Spacer 1 | 3/26/2015 | 23:01:03 | COM5 | 0.00 | 8.31 | 37.00 | 11.40 | PUMPED 20 BBL'S 11.5 TUNED SPACER AT 4 BPM AT 293 PSI |
| Event | 10 | Pump Lead Cement | Pump Lead Cement | 3/26/2015 | 23:08:35 | COM5 | 2.30 | 11.67 | 249.00 | 12.37 | PUMPED 425 SKS OR 143 BBL'S 12.7 LEAD CMT AT 6.7 BPM AT 701 PSI |
| Event | 11 | Pump Tail Cement | Pump Tail Cement | 3/26/2015 | 23:34:36 | COM5 | 4.30 | 13.61 | 154.00 | 13.79 | PUMPED 160 SKS OR 47.5 BBL'S OF 13.8 TAIL CMT AT 4.3 BPM AT 179 PSI |
| Event | 12 | Check Weight | Check weight | 3/26/2015 | 23:40:29 | COM5 | 5.40 | 14.20 | 277.00 | 13.80 | |
| Event | 13 | Shutdown | Shutdown | 3/26/2015 | 23:47:32 | COM5 | 0.00 | 12.99 | 47.00 | 10.15 | |
| Event | 14 | Drop Top Plug | Drop Top Plug | 3/26/2015 | 23:49:51 | COM5 | 0.00 | 13.08 | -6.00 | 0.09 | PLUG PRE LOADED AND WITNESSED BY COMPANY REP |

HALLIBURTON

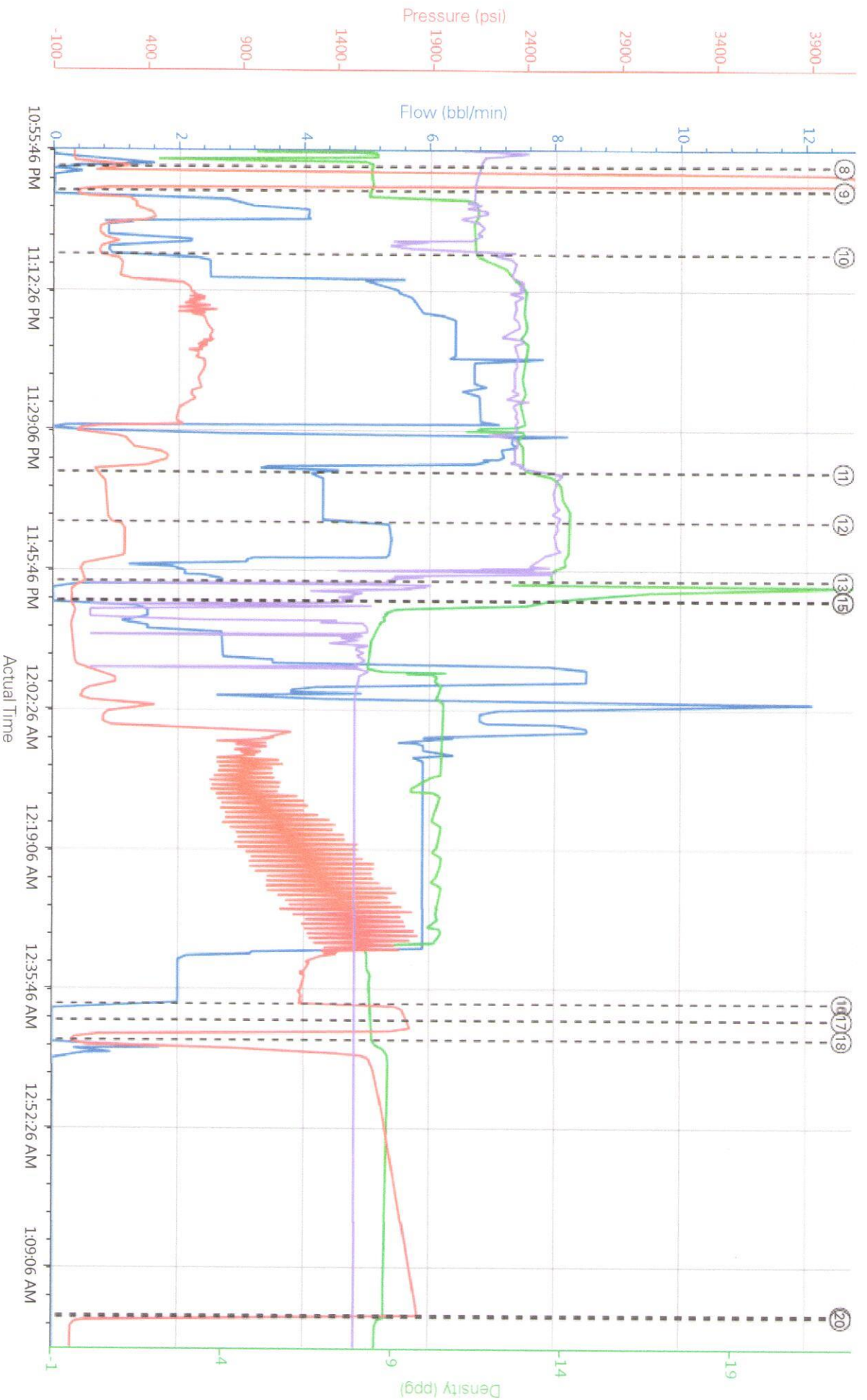
Customer: WHITING OIL & GAS CORP - EBUS

Job: 902257832

Case: Case 1

| | | | | | | | | | | | |
|-------|----|-------------------|-------------------|-----------|----------|------|------|-------|---------|------|--|
| Event | 15 | Pump Displacement | Pump Displacement | 3/26/2015 | 23:49:55 | COM5 | 0.00 | 13.01 | -6.00 | 0.09 | PUMPED 228.8 BBL'S 10.2 OF MUD AT 6 BPM AT 1256 PSI, GOT 15 BBL'S CMT BACK TO SURFACE |
| Event | 16 | Bump Plug | Bump Plug | 3/27/2015 | 00:37:59 | COM5 | 0.00 | 8.35 | 1720.00 | 7.87 | PLUG LANDED AT 1262 PSI, ON CALCULATED DISPLACEMENT |
| Event | 17 | Check Floats | Check Floats | 3/27/2015 | 00:40:00 | USER | 0.00 | 8.38 | 1778.00 | 7.87 | GOT 1.5 BBL'S BACK TO TRUCK |
| Event | 18 | Pressure Up Well | Pressure Up Well | 3/27/2015 | 00:42:19 | COM5 | 0.90 | 8.45 | 11.00 | 7.88 | 1500 PSI CASING TEST FOR 30 MIN |
| Event | 19 | Other | Other | 3/27/2015 | 01:15:13 | COM5 | 0.00 | 8.80 | 122.00 | 7.88 | |
| Event | 20 | End Job | End Job | 3/27/2015 | 01:15:28 | COM5 | 0.00 | 8.49 | 24.00 | 7.88 | |

Custom Results



Comb Pump Rate (bbl/min) DH Density (ppg) PS Pump Press (psi) Recirc Density (ppg)

- ① Call Out n/a; n/a; n/a
- ② Crew Leave Yard n/a; n/a; n/a
- ③ Arrive At Loc n/a; n/a; n/a
- ④ Rig-up Lines n/a; n/a; n/a
- ⑤ Rig-Down Completed n/a; n/a; n/a
- ⑥ Pre-Job Safety Meeting 0:8:6; 0:0:5
- ⑦ Start Job 0:8:56; 0:11:89
- ⑧ Test Lines 0:8:32; 1:18; 1:151
- ⑨ Pump Spacer 1 0:8:31; 3:37; 1:14
- ⑩ Pump Lead Cement 2 3:11; 6:24; 9:12; 37
- ⑪ Pump Trail Ceme
- ⑫ Check weight 5.4