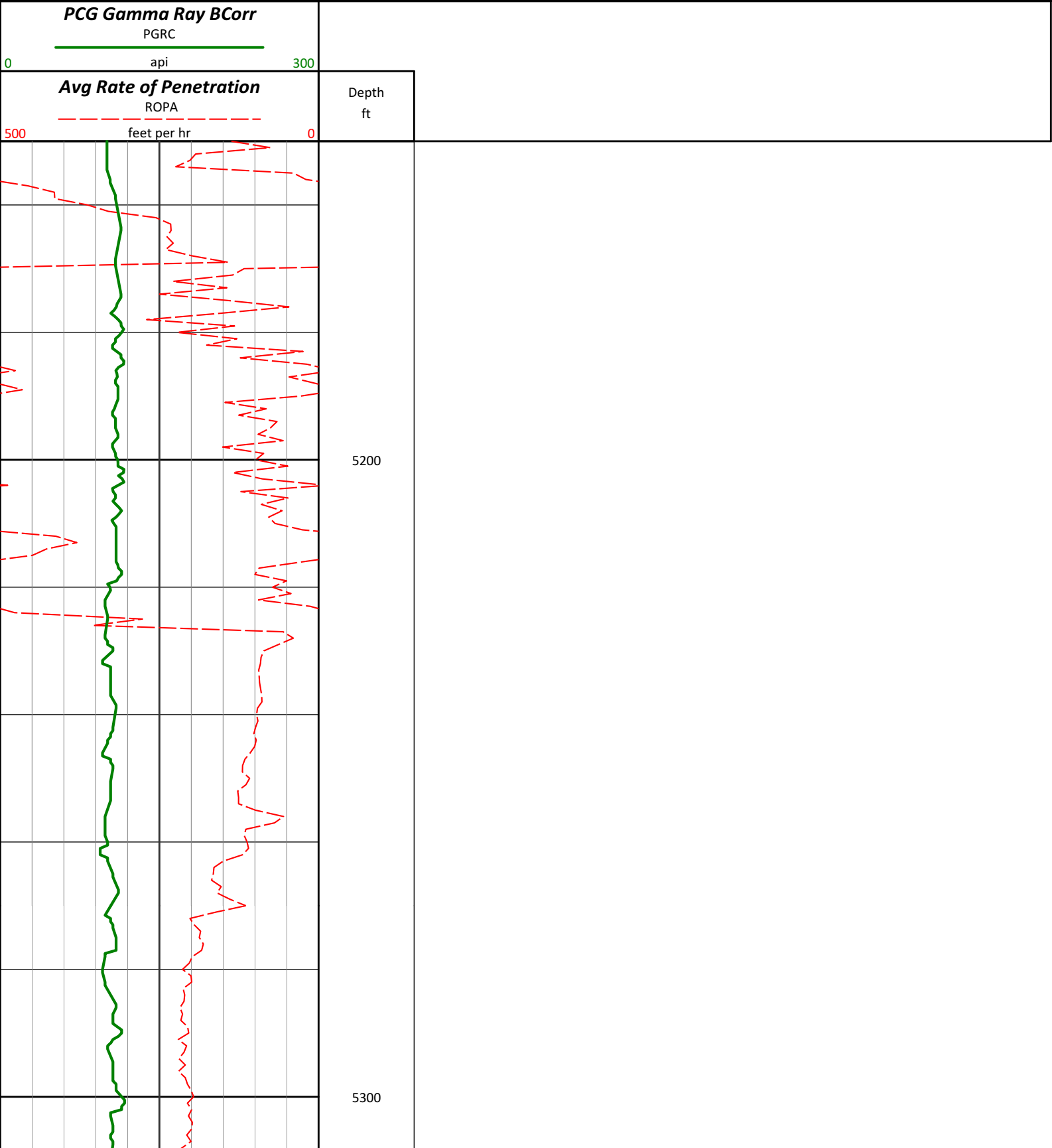
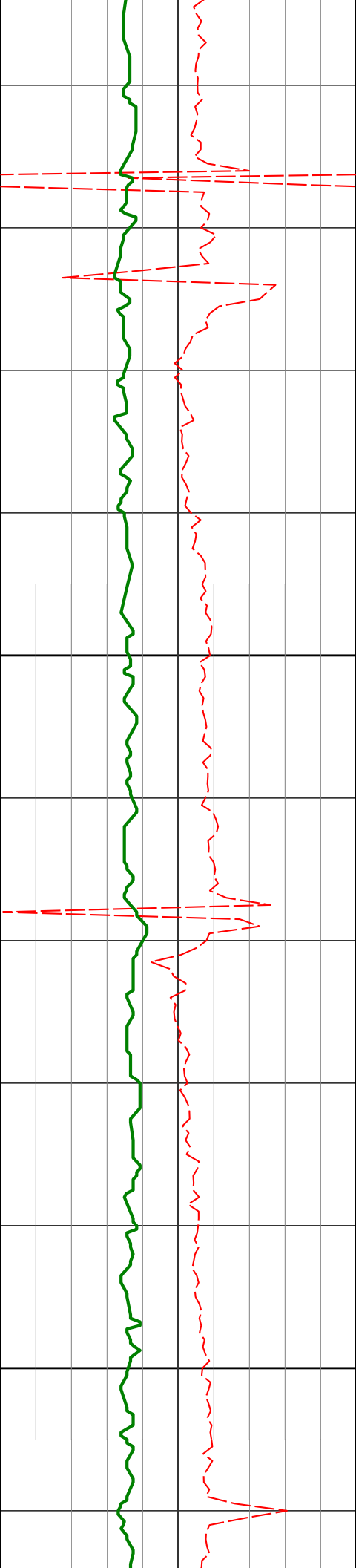


**HALLIBURTON**  
**Sperry Drilling Services**  
**TVD LOG 1:240 5"**

Not a final log

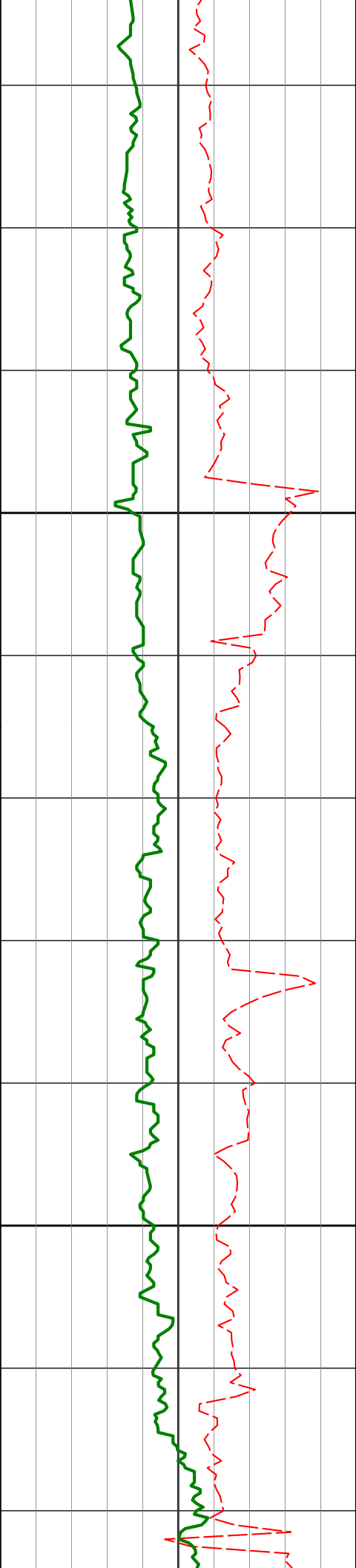
Whiting Oil and Gas  
Razor 11H-1415A  
Frontier 26





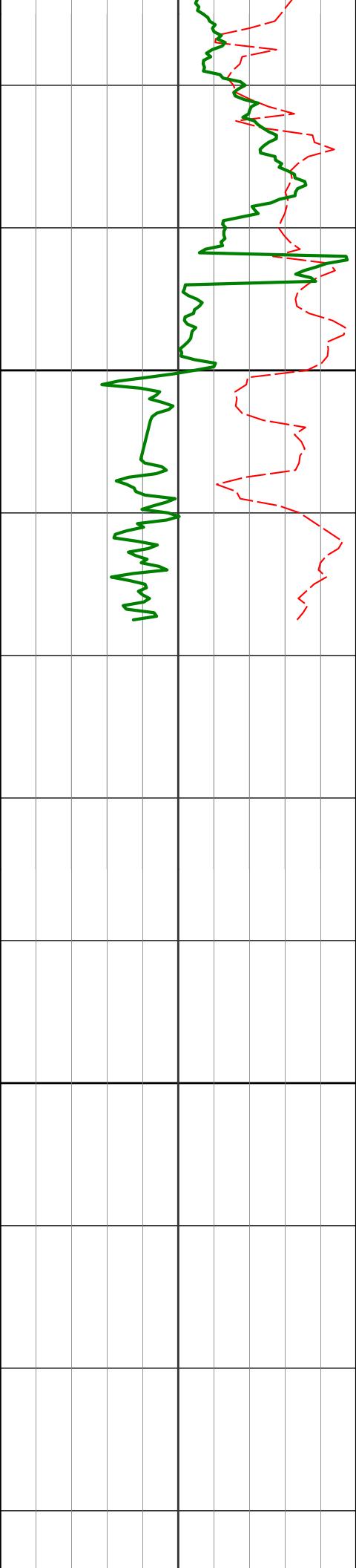
5400

5500



5600

5700



5800

5900

[illegible]

[illegible]

The figure is a log-log plot with Depth (ft) on the vertical axis (y-axis) and two parameters on the horizontal axis (x-axis): Avg Rate of Penetration (ROPA) and PCG Gamma Ray BCorr (PGRC). The y-axis has major grid lines at 100, 300, 1000, and 3000. The x-axis has major grid lines at 100, 300, and 1000. Two curves are plotted: a dashed red line for ROPA and a solid green line for PGRC. Both curves show a decreasing trend as depth increases. The ROPA curve starts at approximately 500 at 100 ft depth and decreases to about 100 at 3000 ft depth. The PGRC curve starts at approximately 300 at 100 ft depth and decreases to about 100 at 3000 ft depth.

Depth (ft)	Avg Rate of Penetration (ROPA)	PCG Gamma Ray BCorr (PGRC)
100	~500	~300
300	~150	~100
1000	~50	~30
3000	~100	~100