



**RADIAL CEMENT BOND
GAMMA RAY
CCL**

Company		KERR MCGEE OIL AND GAS		Location:		API # : 05-123-10066		Other Services	
Well		GEE WILLIAM E GU #2		SW/SE					
Field		WATTENBERG							
County		WELD							
State		CO							
Permanent Datum		GL		Elevation		4862'		Elevation	
Log Measured From		KB 10'						K.B. 4872'	
Drilling Measured From		KB						D.F. 4871'	
								G.L. 4862'	
SEC 24		TWP 2N		RGE 67W					
LAT:40.11920 & LONG:-104.83500									
Date		4-23-2015							
Run Number		ONE							
Depth Driller		8020'							
Depth Logger		7485'							
Bottom Logged Interval		7476'							
Top Log Interval		SURFACE							
Open Hole Size		7.875							
Type Fluid		WATER							
Density / Viscosity		1.0							
Max. Recorded Temp.		212 DEG F							
Estimated Cement Top		696'							
Time Well Ready		N/A							
Time Logger on Bottom		N/A							
Equipment Number		4310							
Location		GREELEY							
Recorded By		N. BREHMER							
Witnessed By		B. SMITH							
Borehole Record				Tubing Record					
Run Number		Bit		From		To		Size	
								Weight	
								From	
								To	
Casing Record		Size		Wgt/Ft		Top		Bottom	
Surface String		8.63		24#		SURFACE		616'	
Prot. String									
Production String		4.5		10.5# & 11.6#		SURFACE		8020'	
Liner									

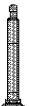
<<< Fold Here >>>

All interpretations are opinions based on inferences from electrical or other measurements and we cannot and do not guarantee the accuracy or correctness of any interpretation, and we shall not, except in the case of gross or willful negligence on our part, be liable or responsible for any loss, costs, damages, or expenses incurred or sustained by anyone resulting from any interpretation made by any of our officers, agents or employees. These interpretations are also subject to our general terms and conditions set out in our current Price Schedule.

Comments

RAN CBL TO VERIFY CEMENT BOND
HOLE WAS LOADED ON ARRIVAL
CORRELATED UP HOLE 8' TO WARRIOR ENERGY SERVICES LOG 4-6-15
CALIBRATED FREE PIPE @6450' 81MA IN 4.5"

THANK YOU FOR USING WARRIOR !!!!!!!

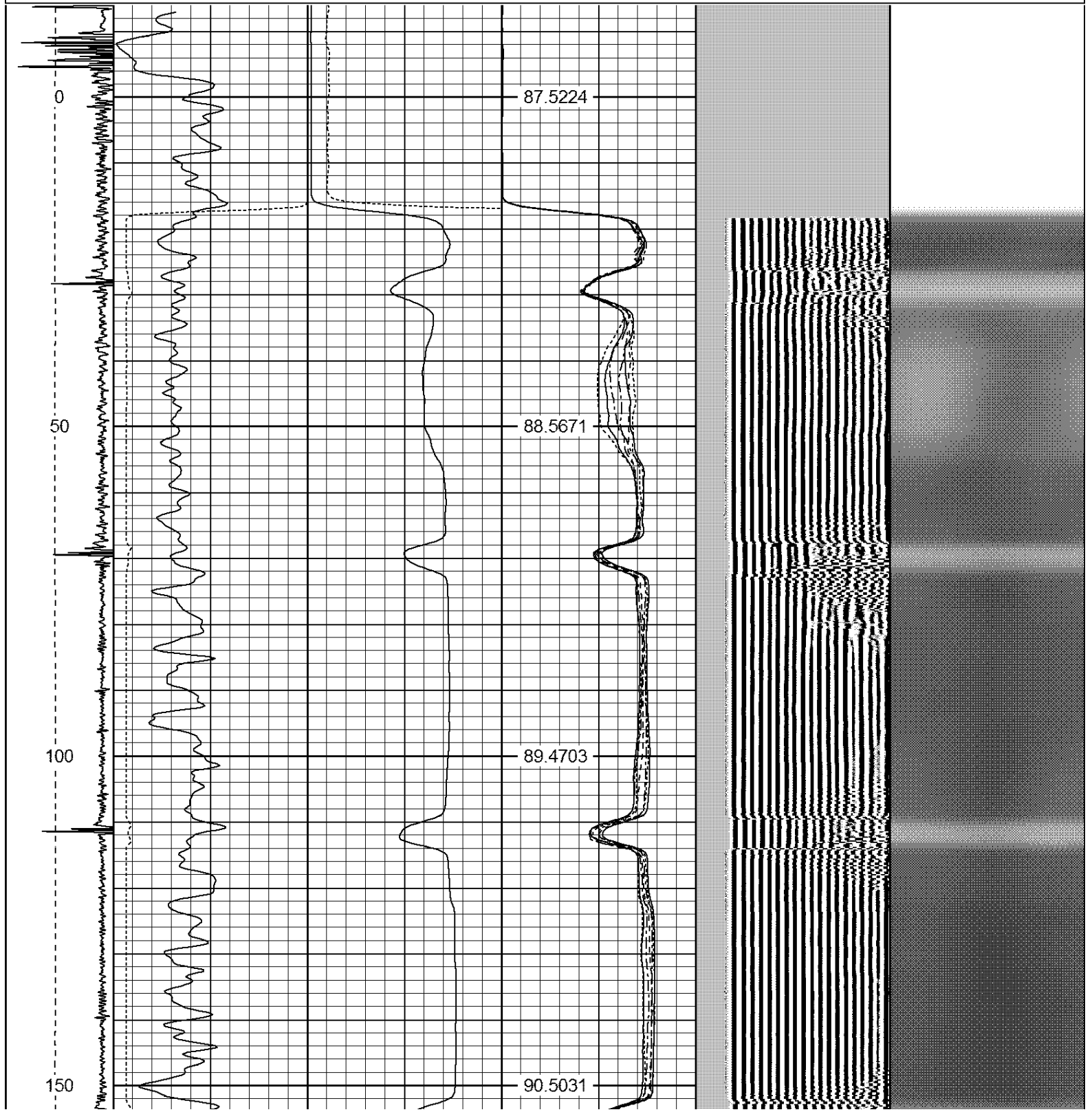
Sensor	Offset (ft)	Schematic	Description	Len (ft)	OD (in)	Wt (lb)
			1_4	1.00	1.36	5.00

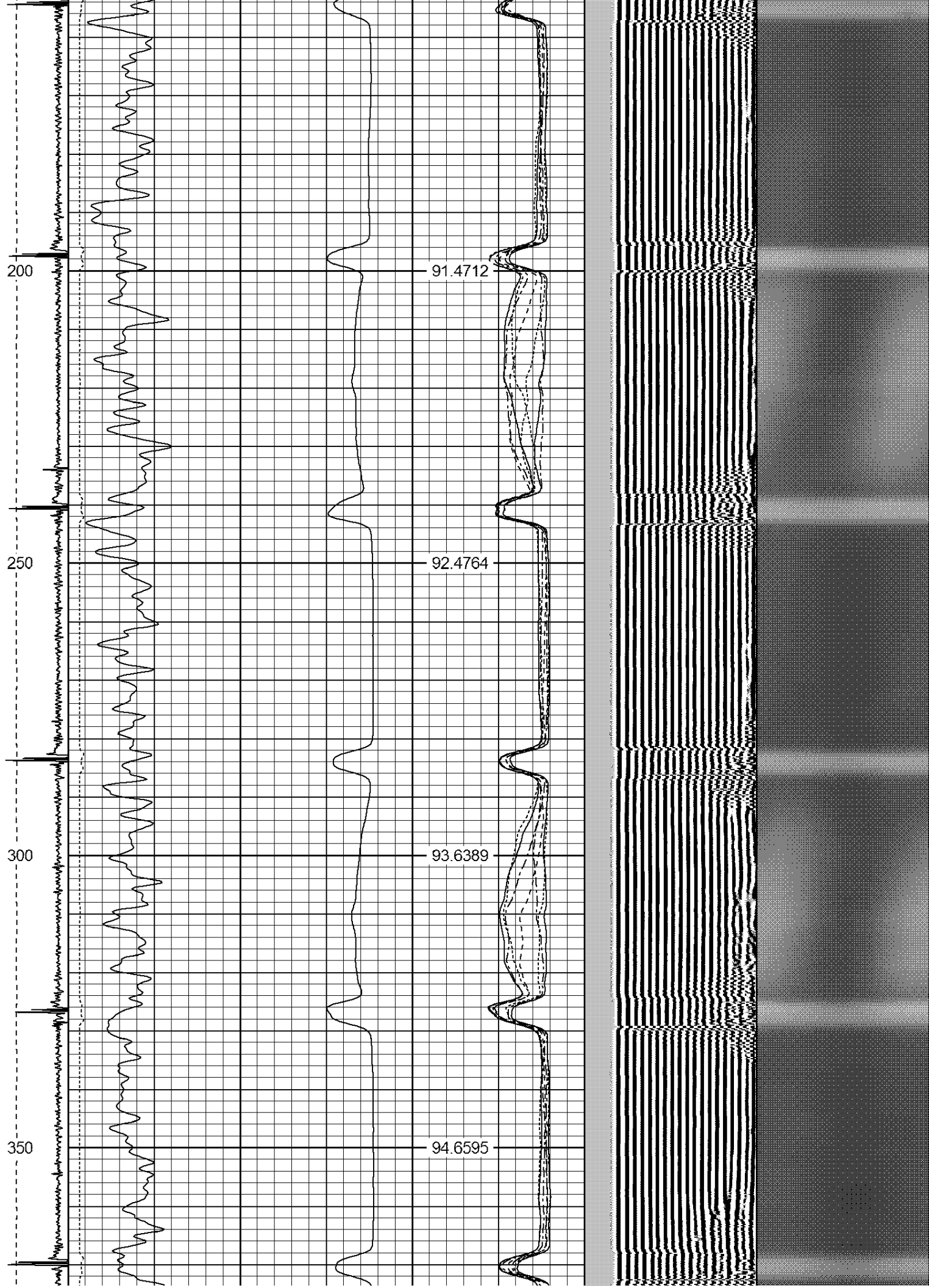
Tool Joint	Tool Joint Length (ft)	Tool Joint Weight (lb)	Tool Joint O.D. (in)	Tool Joint Description	Tool Joint Weight (lb)	Tool Joint O.D. (in)	Tool Joint Length (ft)
HEADVOLT	16.13						
IntTemp	14.71						
WVFS3FT	11.46						
WVFCAL	11.46						
WVFS1	11.46						
WVFS2	11.46						
WVFS3	11.46						
WVFS4	11.46						
WVFS5	11.46						
WVFS6	11.46						
WVFS7	11.46						
WVFS8	11.46						
WVF5FT	10.46						
CNLSC	6.00						
CNSSC	5.17						
CCL	3.64						
GR	0.90						
PTS275	2.83	2.75					
RBT-Probe (Base)	8.92	2.75	90.00	Probe Radii Bond Tool with Digital Telemetry			
CNT-Probe_B (275)	2.88	2.75	40.00	6 bow centralizer			
GR-Probe (275)	4.33	2.75	30.00	Probe 2.75"			

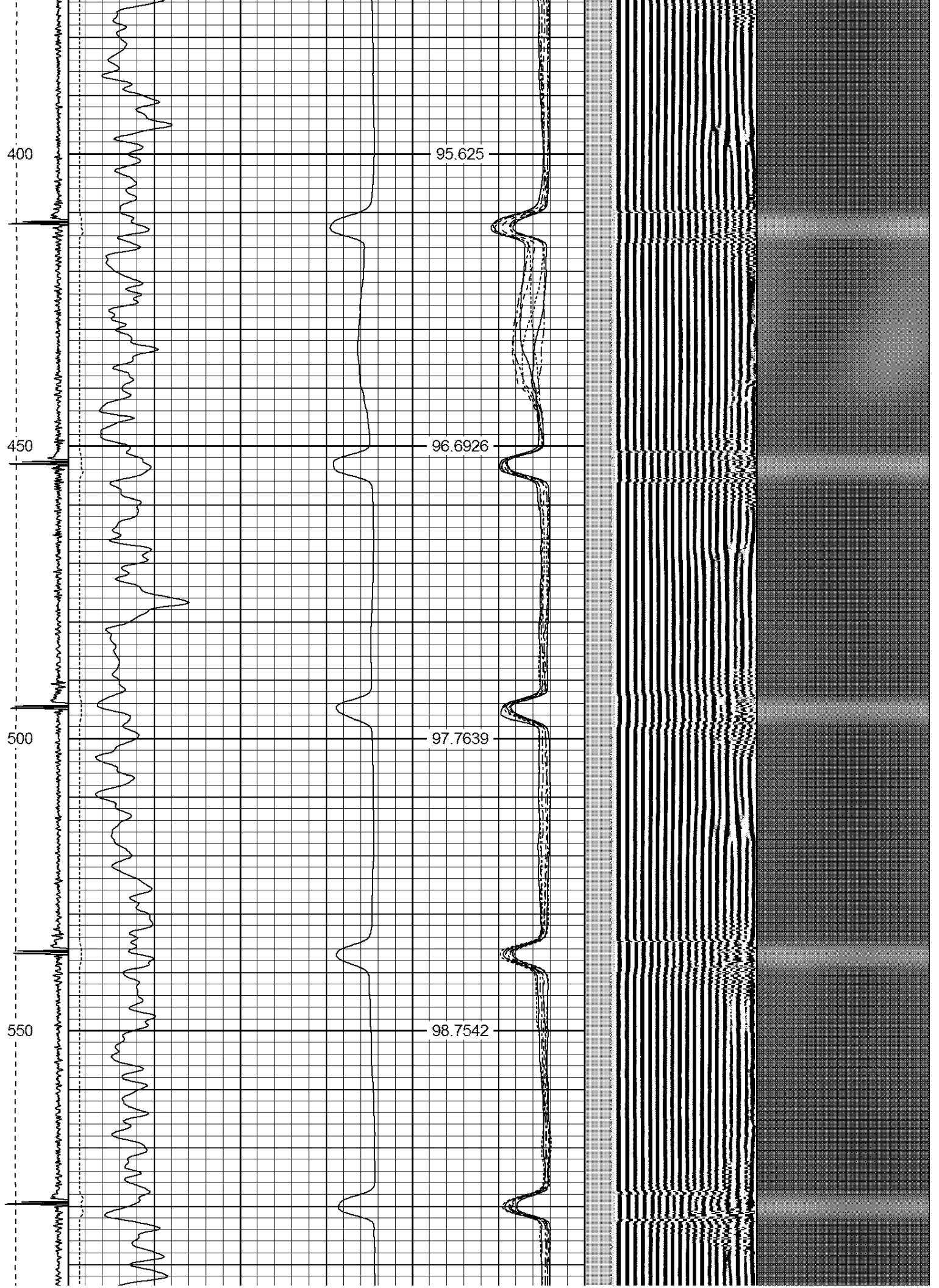
Dataset:
Total Length:
Total Weight:
O.D.

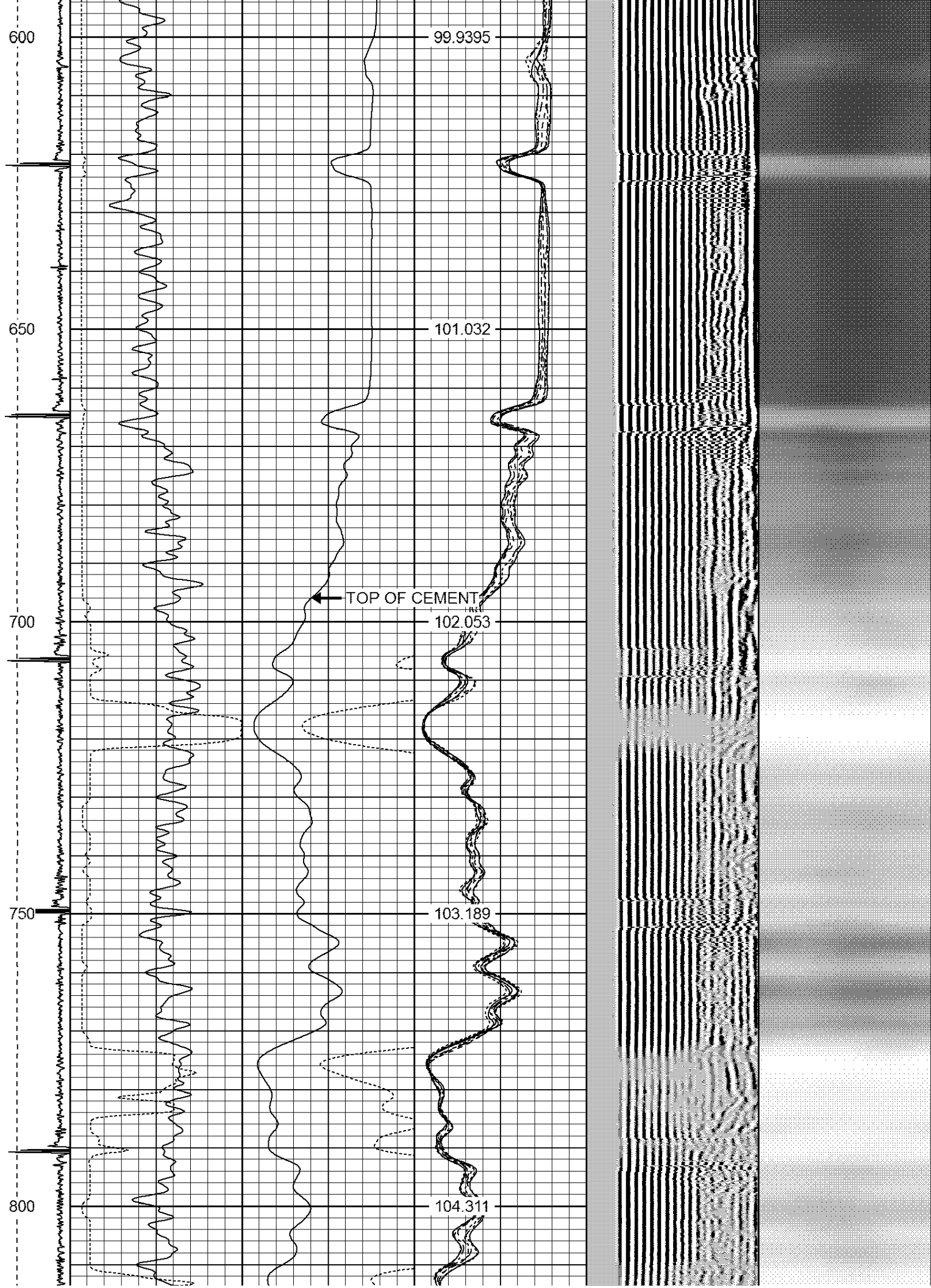
gee william e gu #2.db: field/well/run1/pass5
19.96 ft
165.00 lb
2.75 in

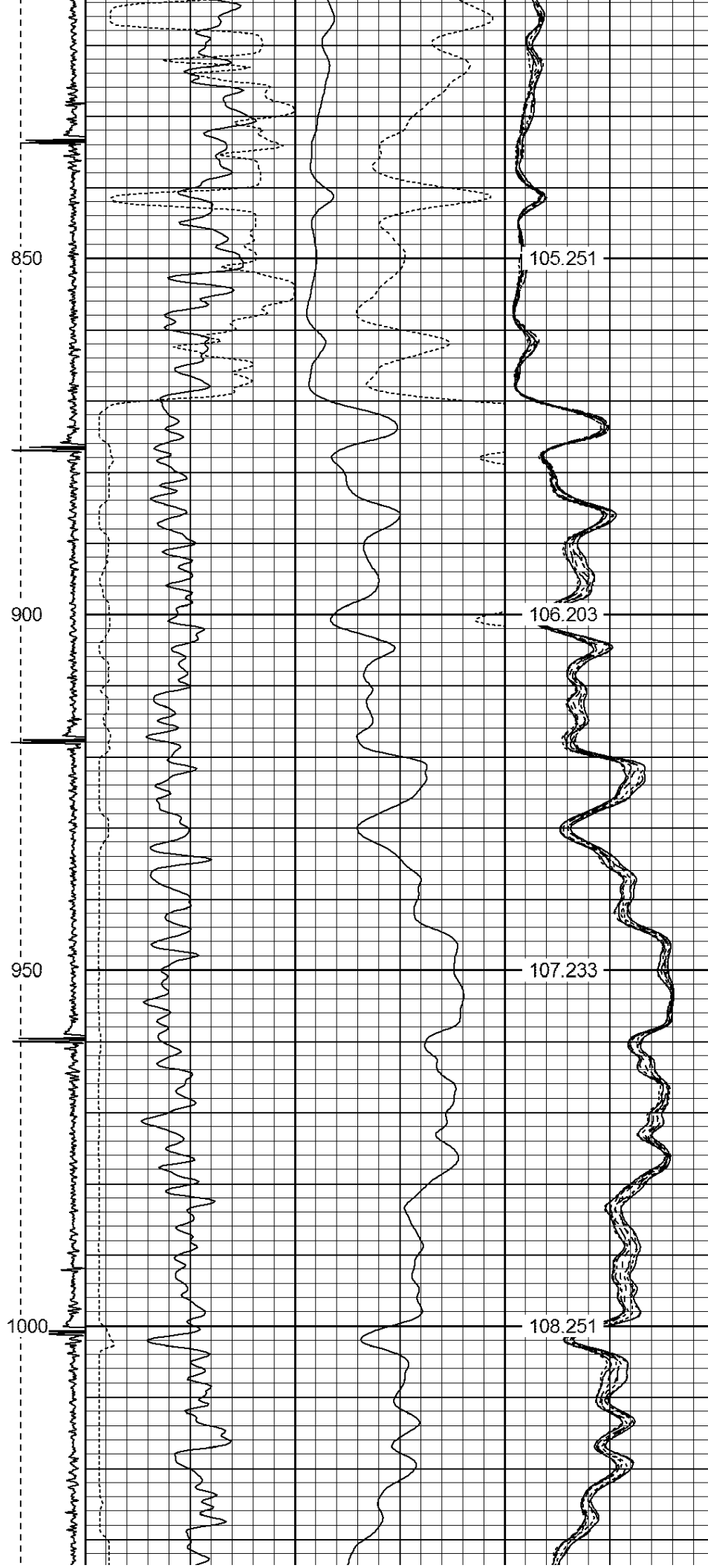
-9	CCL	1	200	TT (usec)	1200	0	AMP (mV)	100	0	AMPS1	100	200	VDL	1200	1	Cement Map	8
LSPD			0	GR (GAPI)	200	0	AMPx5 (mV)	20	0	AMPS2	100				1		100
(ft/min)			200	GR (GAPI)	400				0	AMPS4	100						
0		250							0	AMPS5	100						
									0	AMPS6	100						
									0	AMPS7	100						
									0	AMPS8	100						
										IntTemp							
										(degF)							

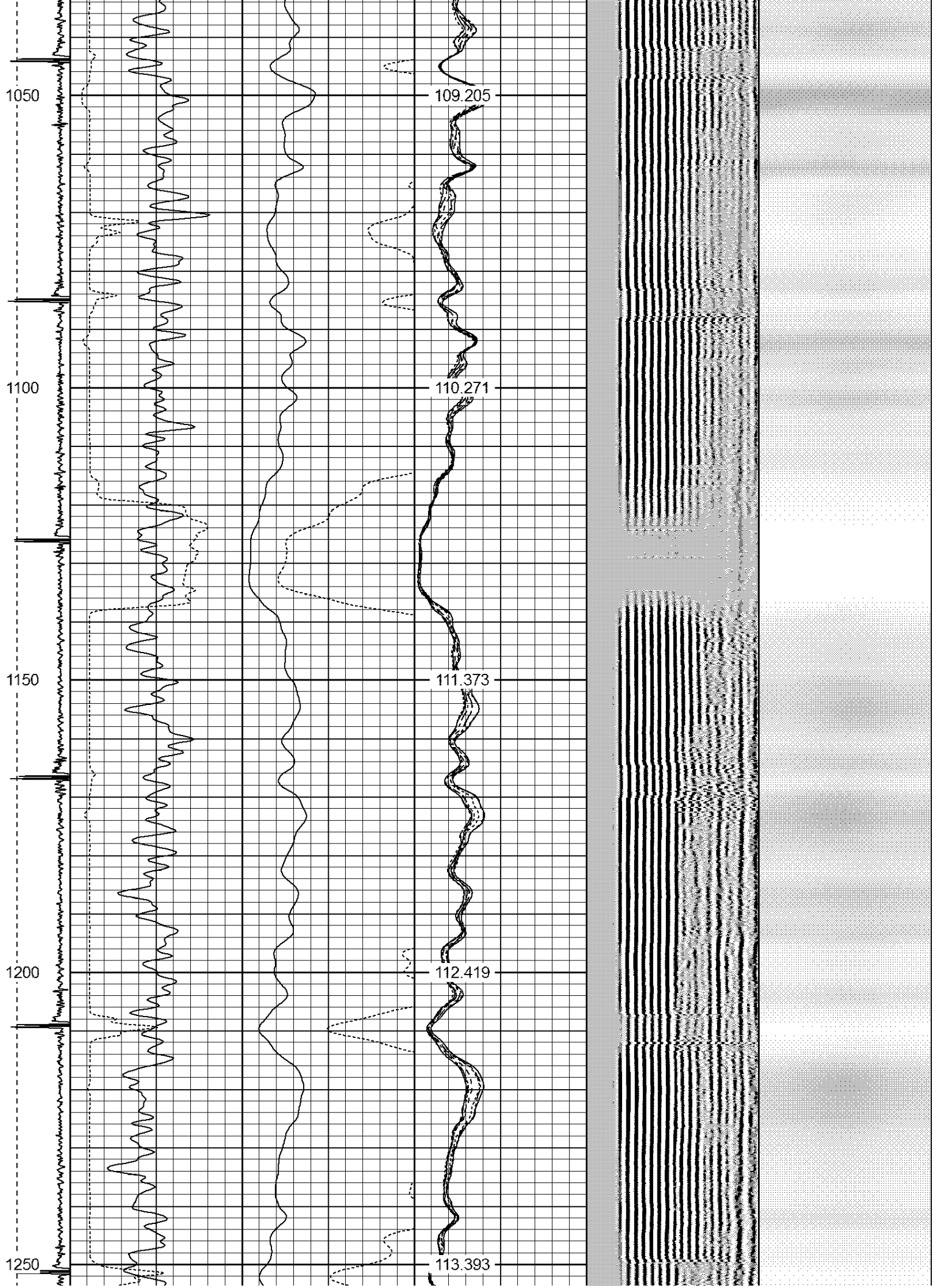


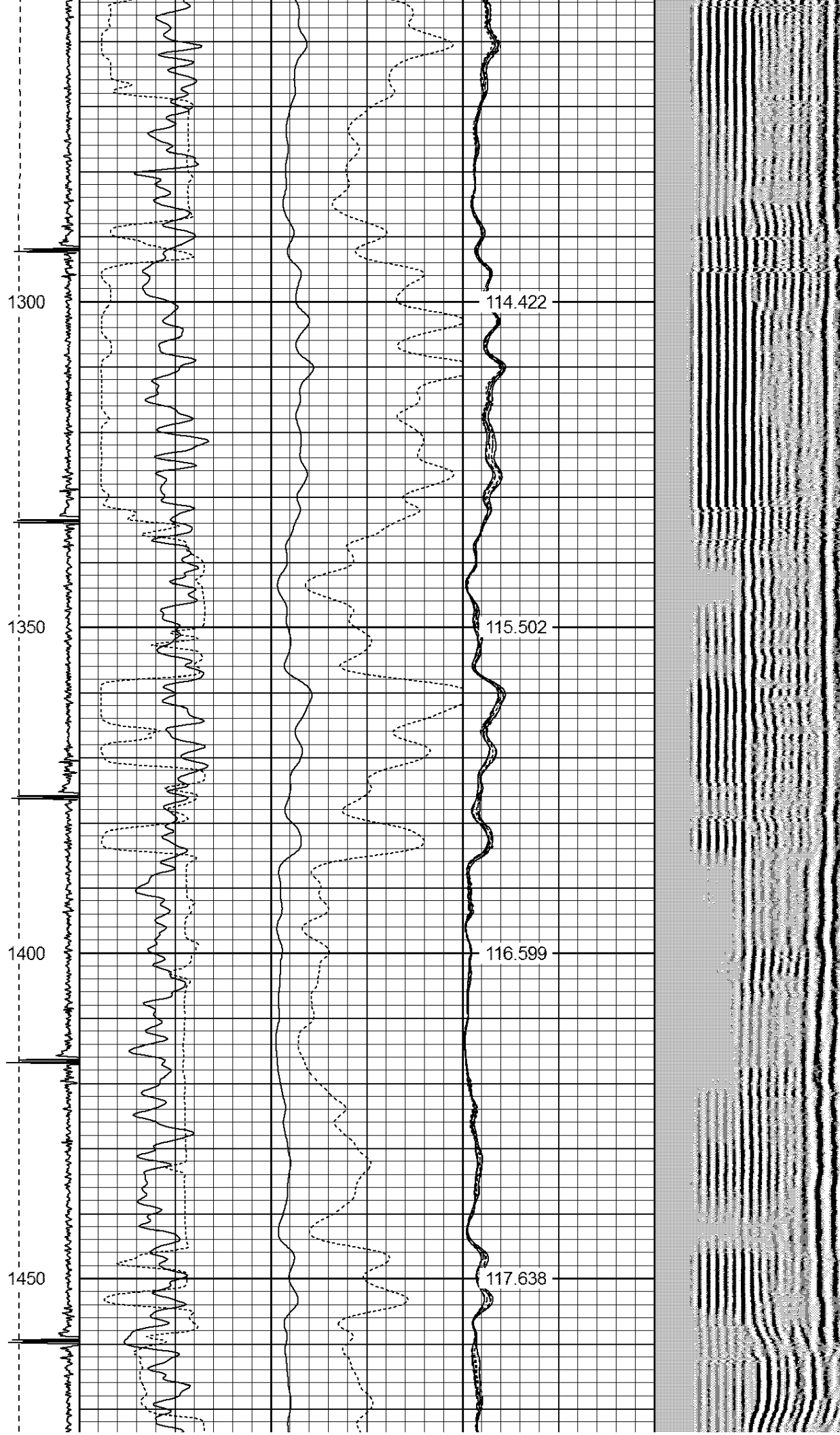


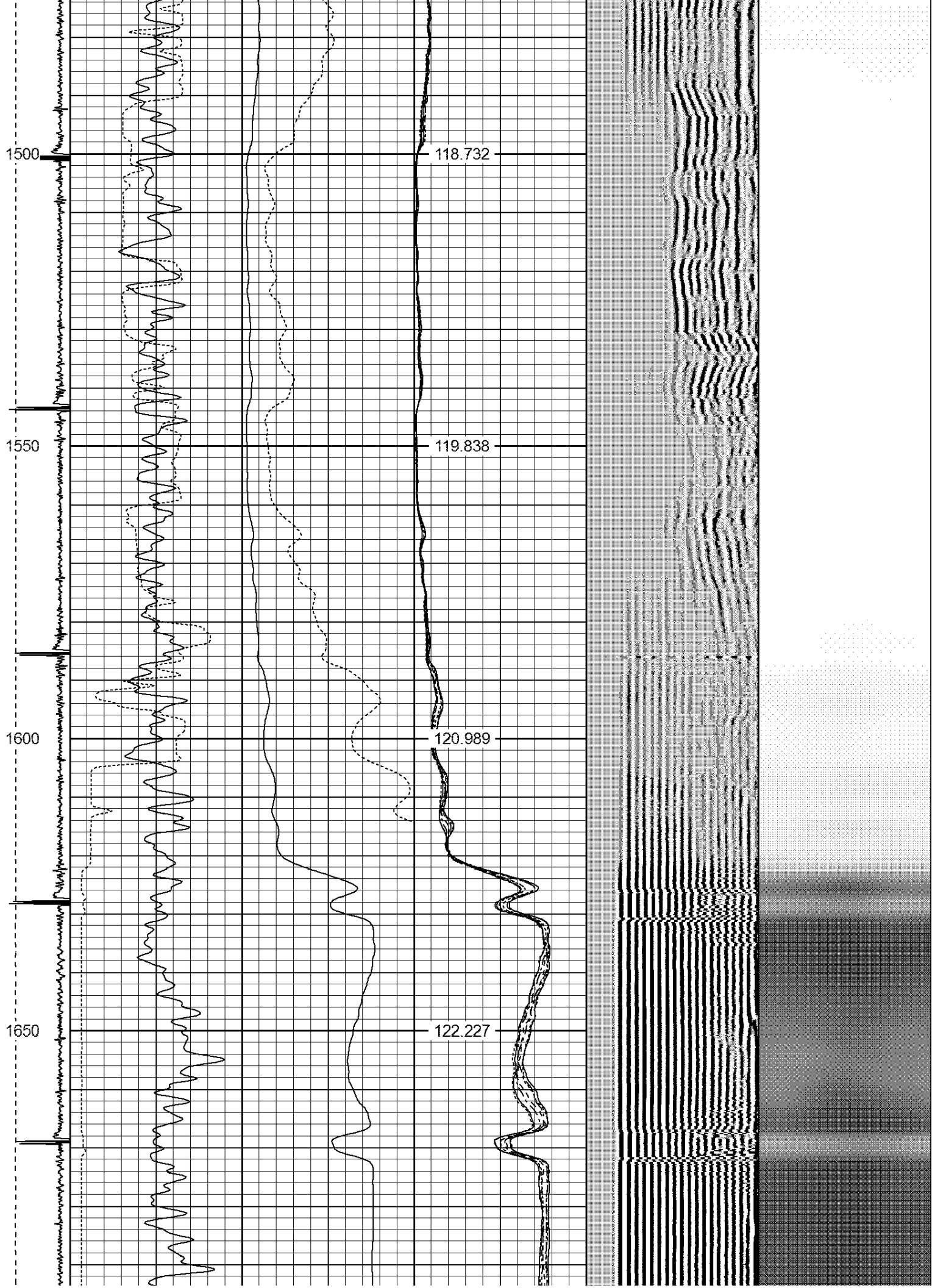












1700

123.437

1750

124.668

1800

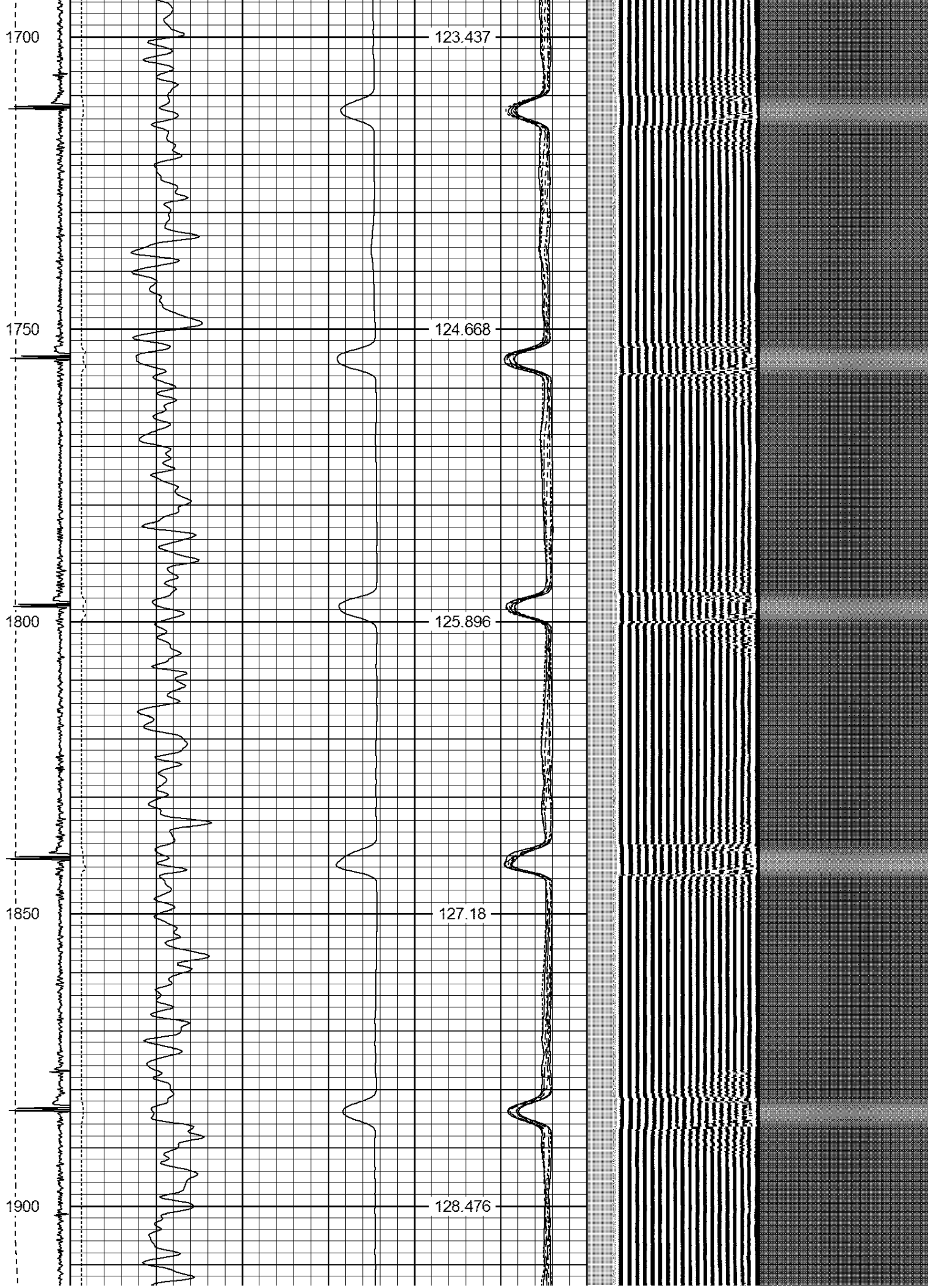
125.896

1850

127.18

1900

128.476





2150

134.263

2200

135.443

2250

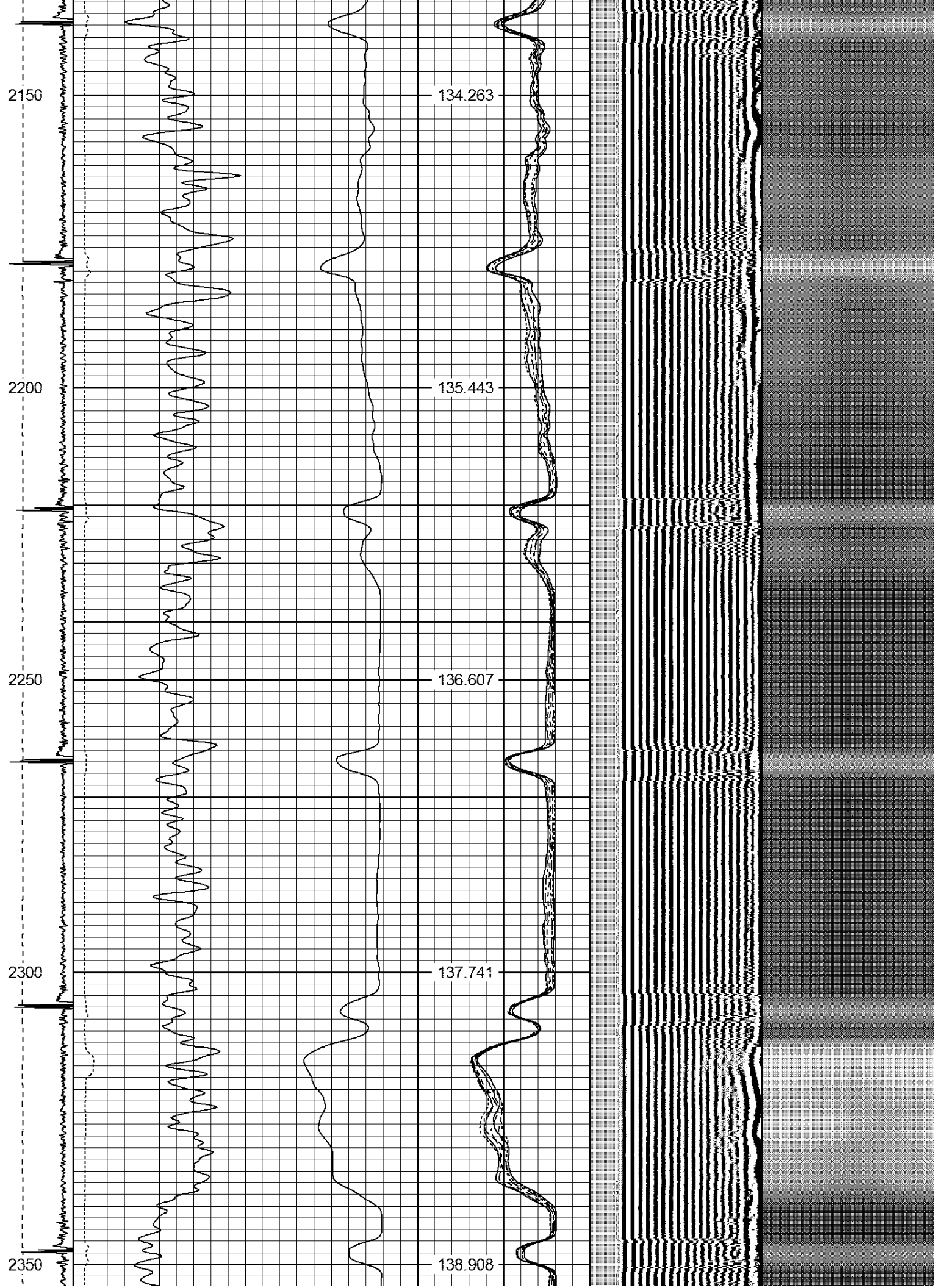
136.607

2300

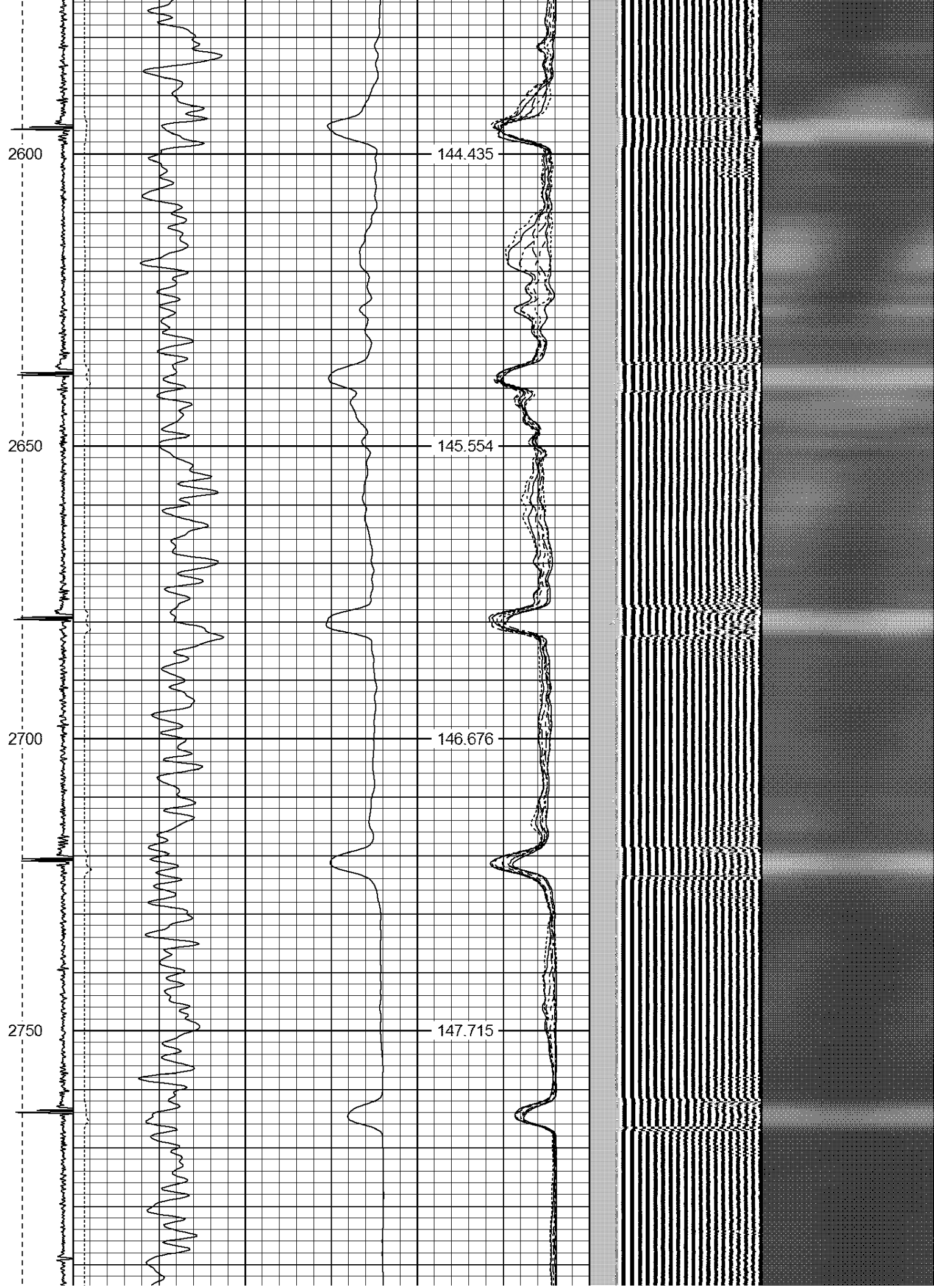
137.741

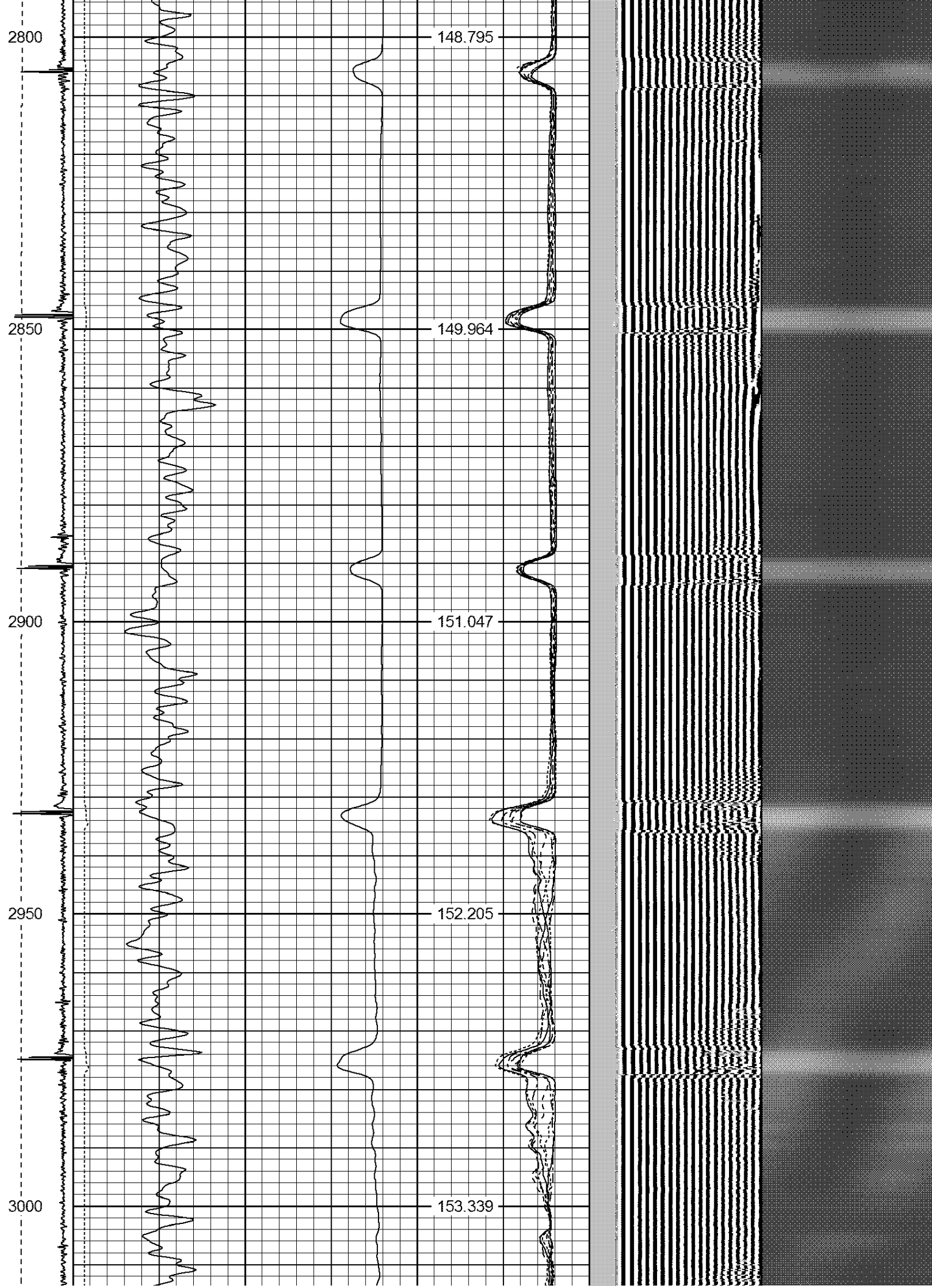
2350

138.908



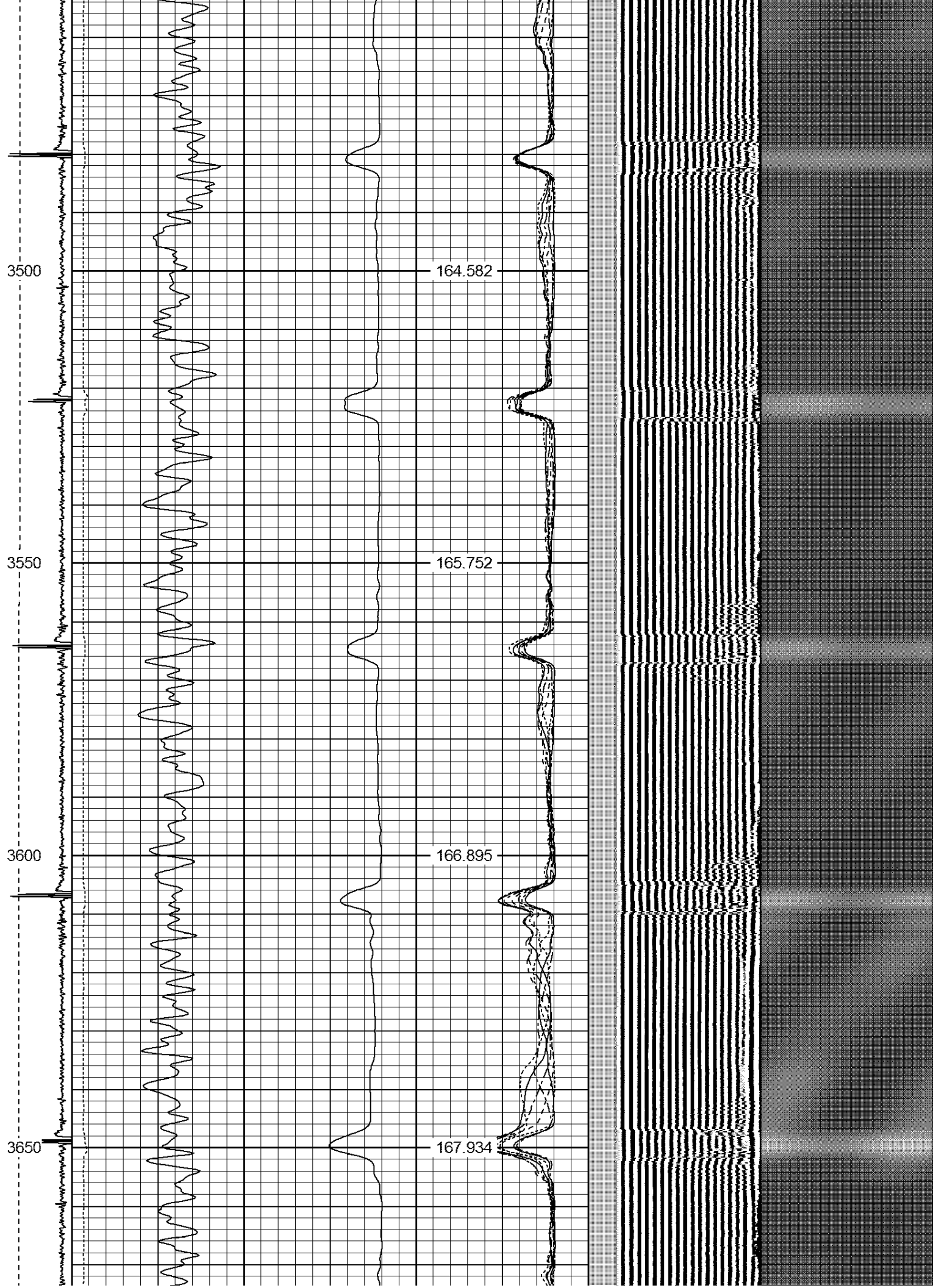






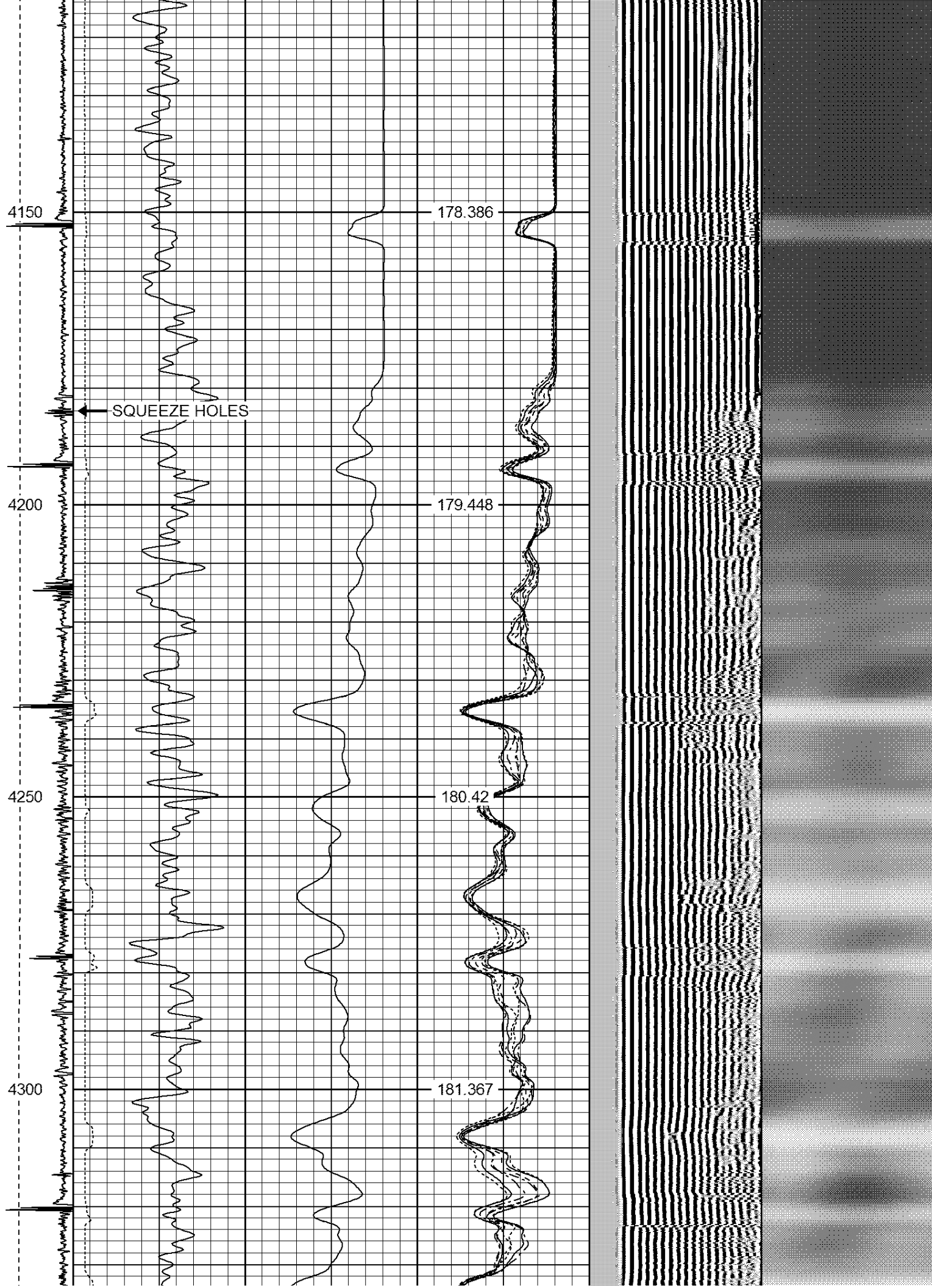












4350

182.234

4400

183.135

4450

184.018

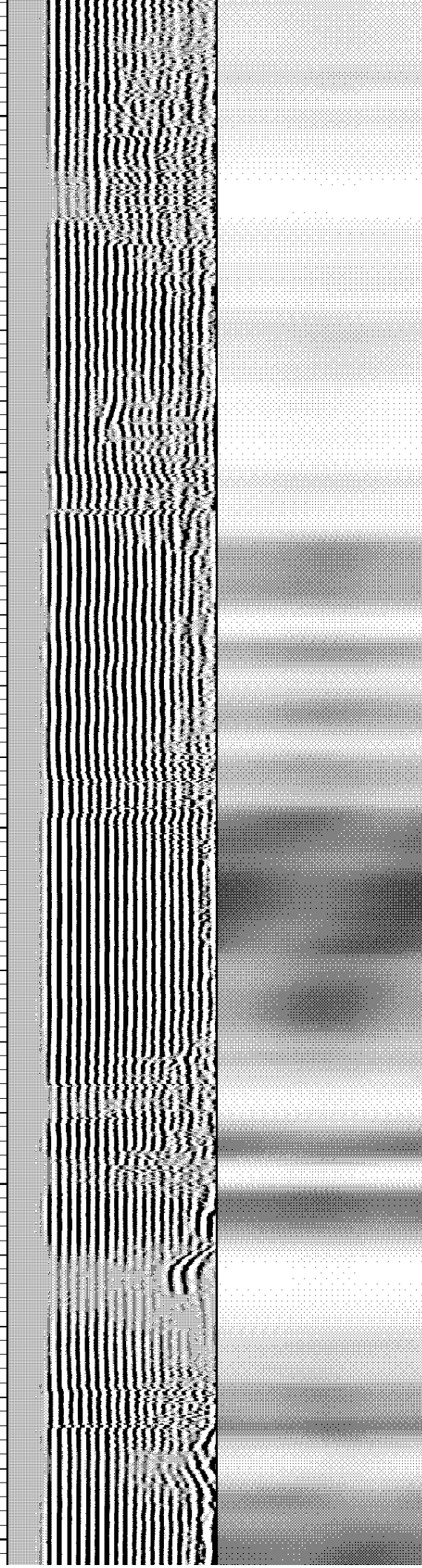
4500

← SQUEEZE HOLES

184.874

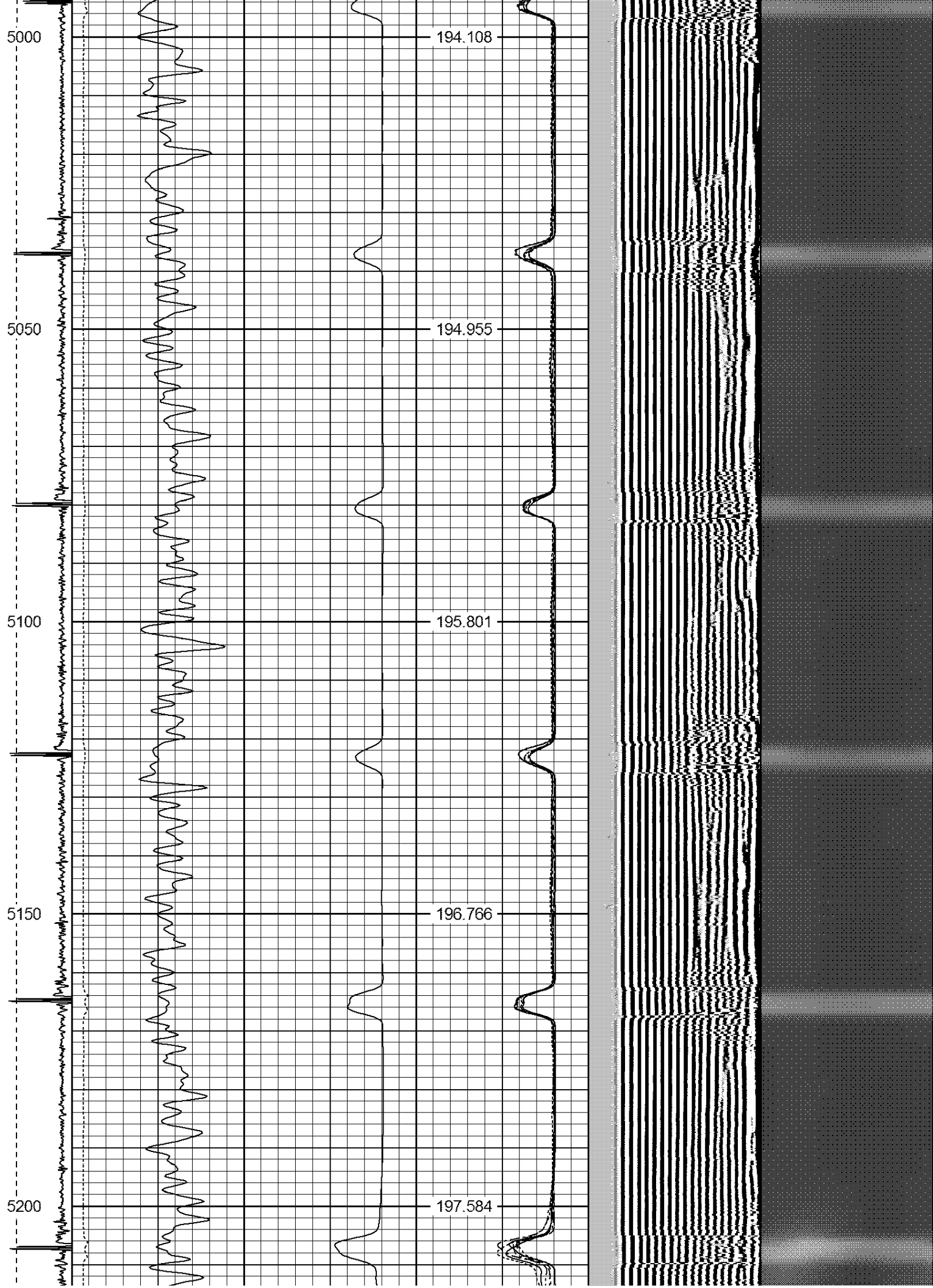
4550

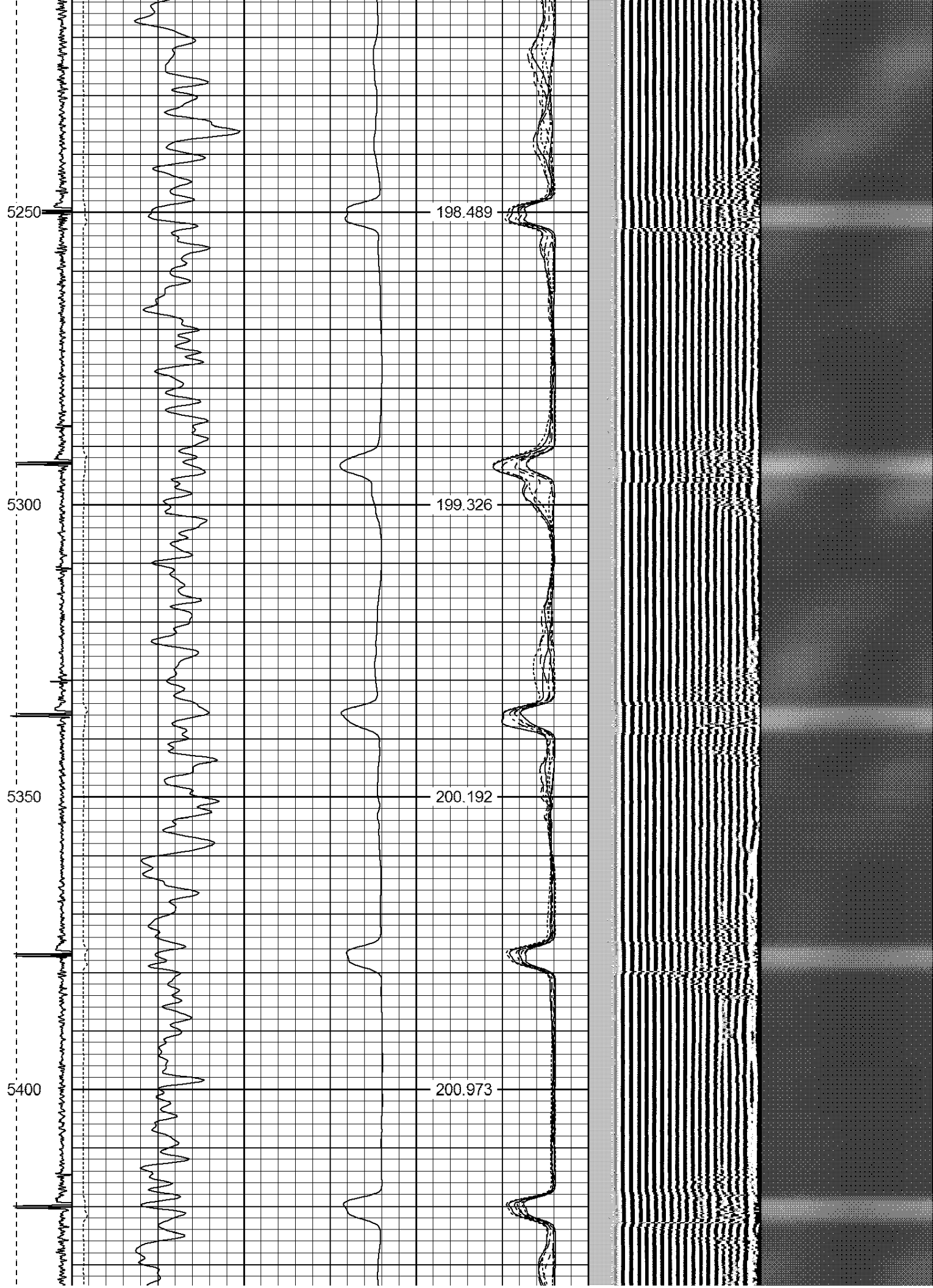
185.8











5450

201.76

5500

202.684

5550

203.498

5600

204.355

5650

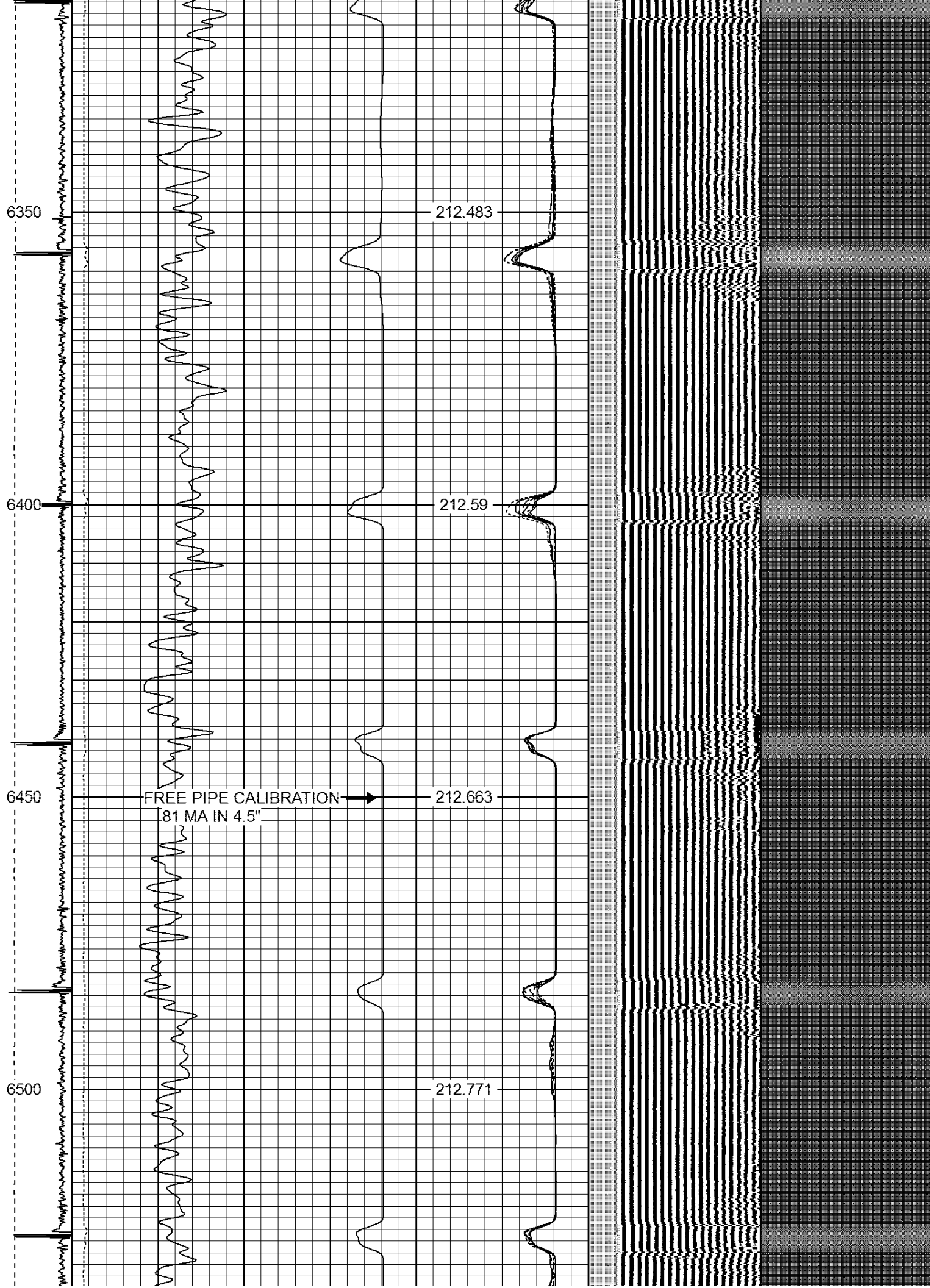
205











6550

212.683

6600

212.667

6650

212.54

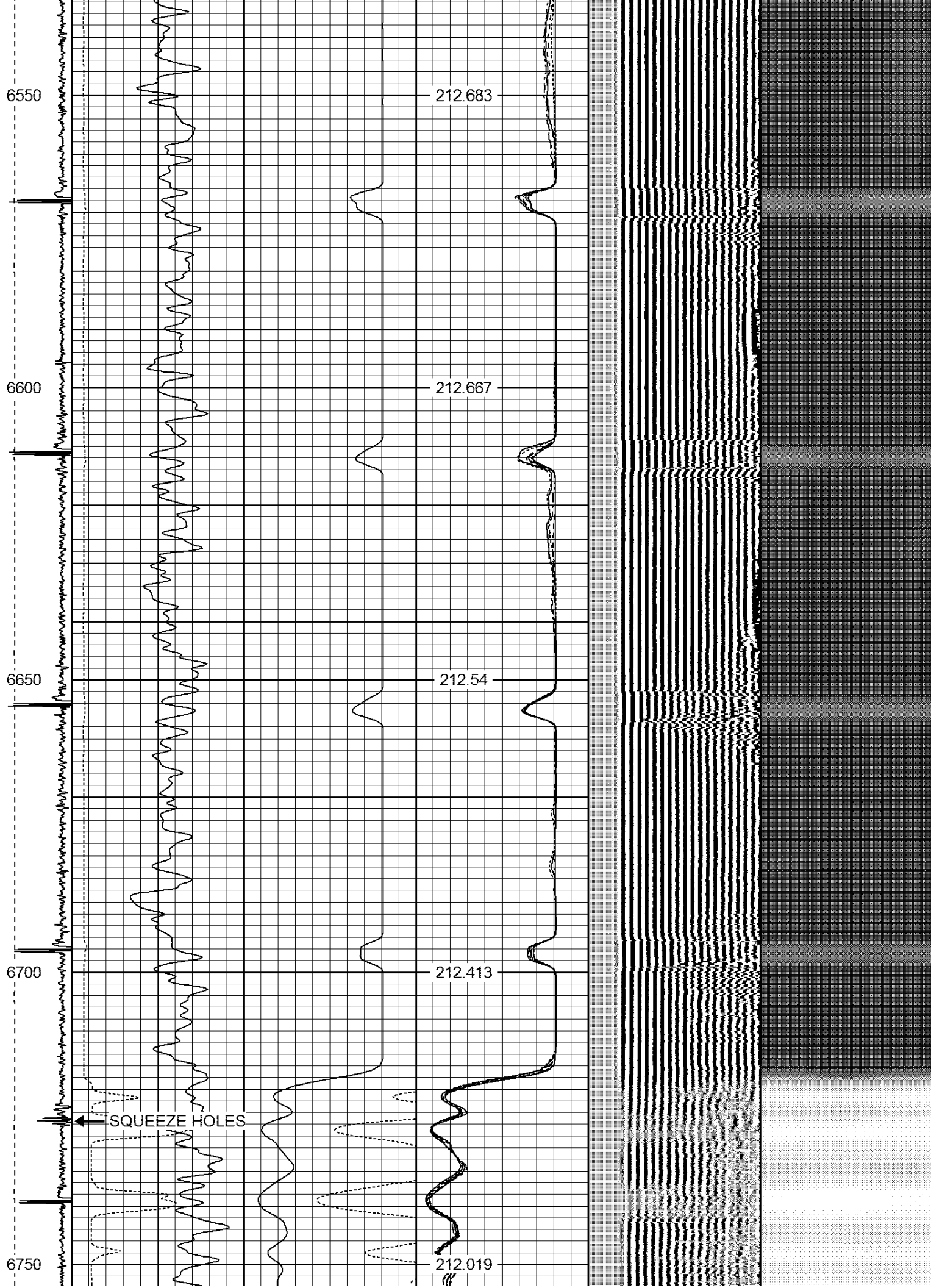
6700

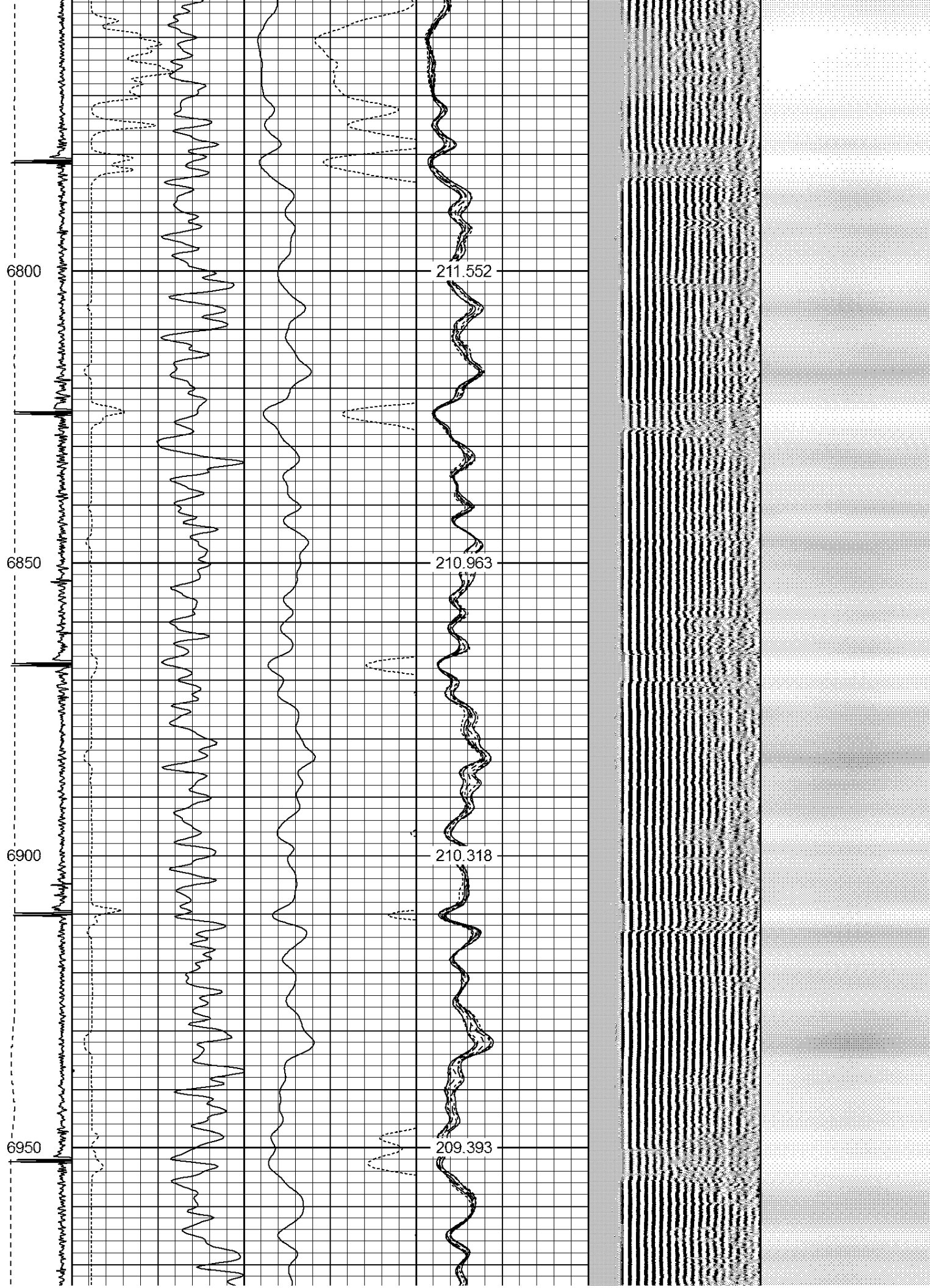
212.413

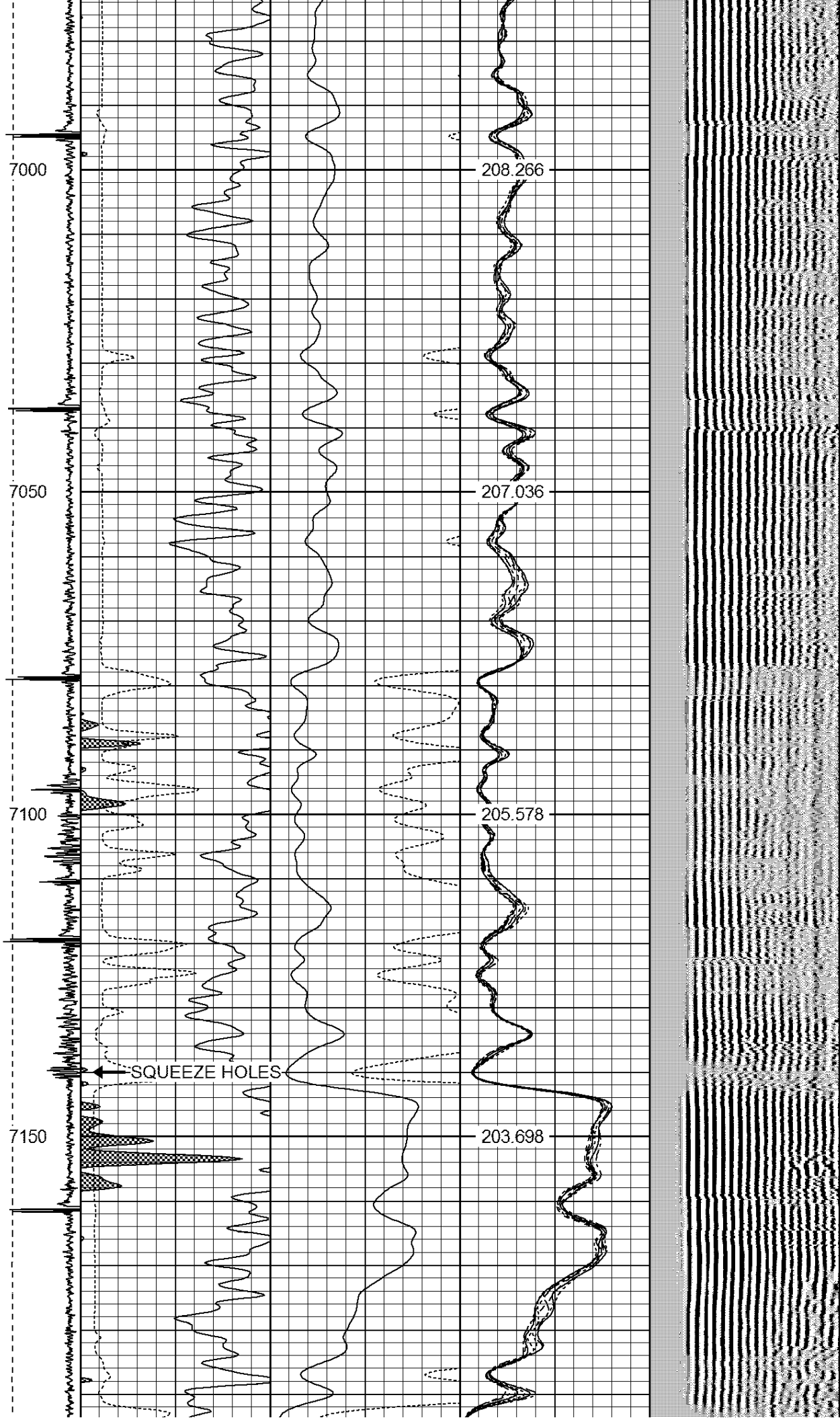
6750

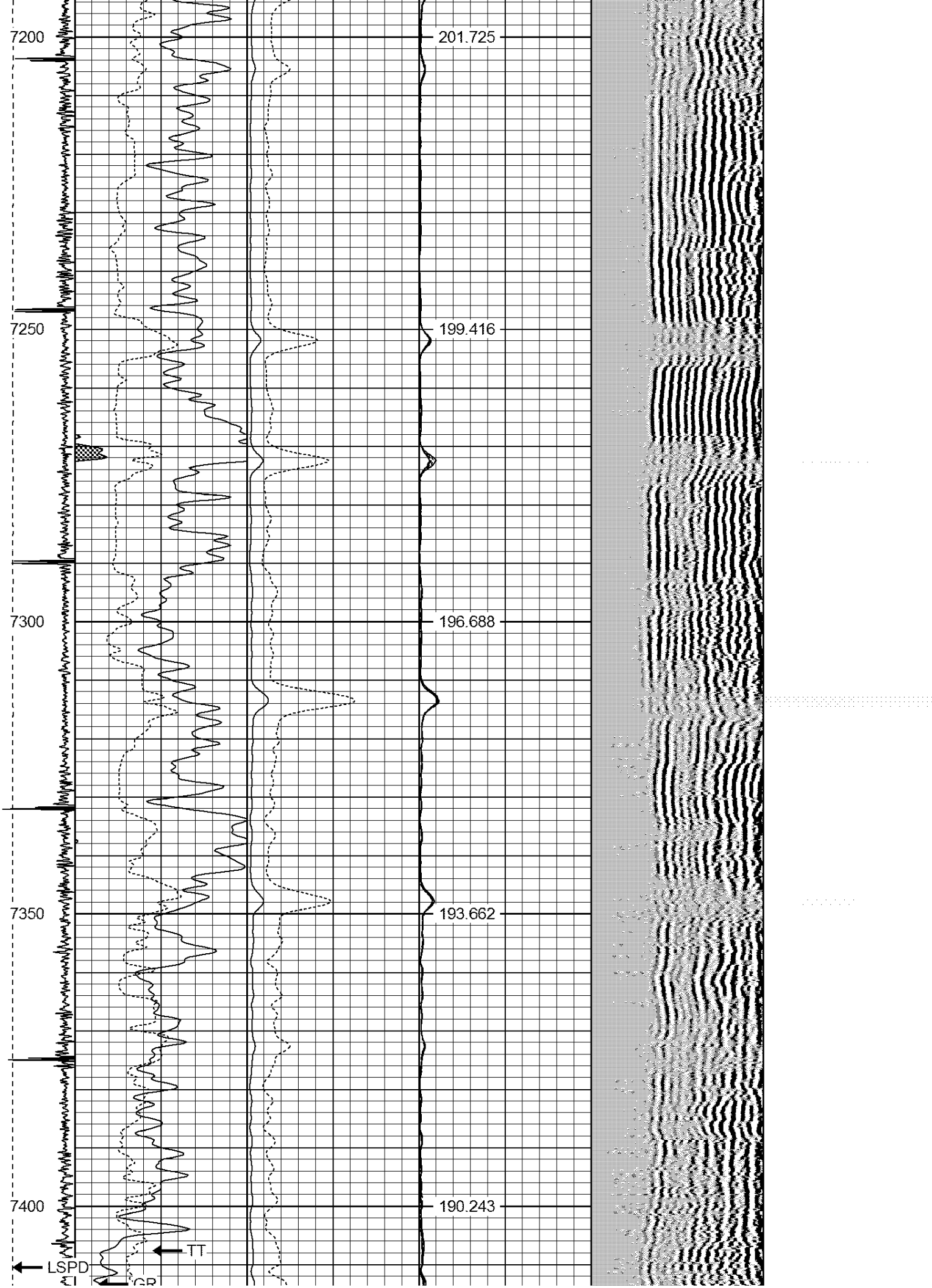
212.019

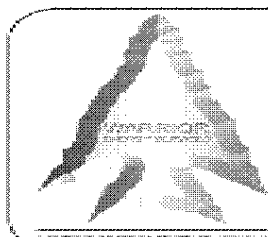
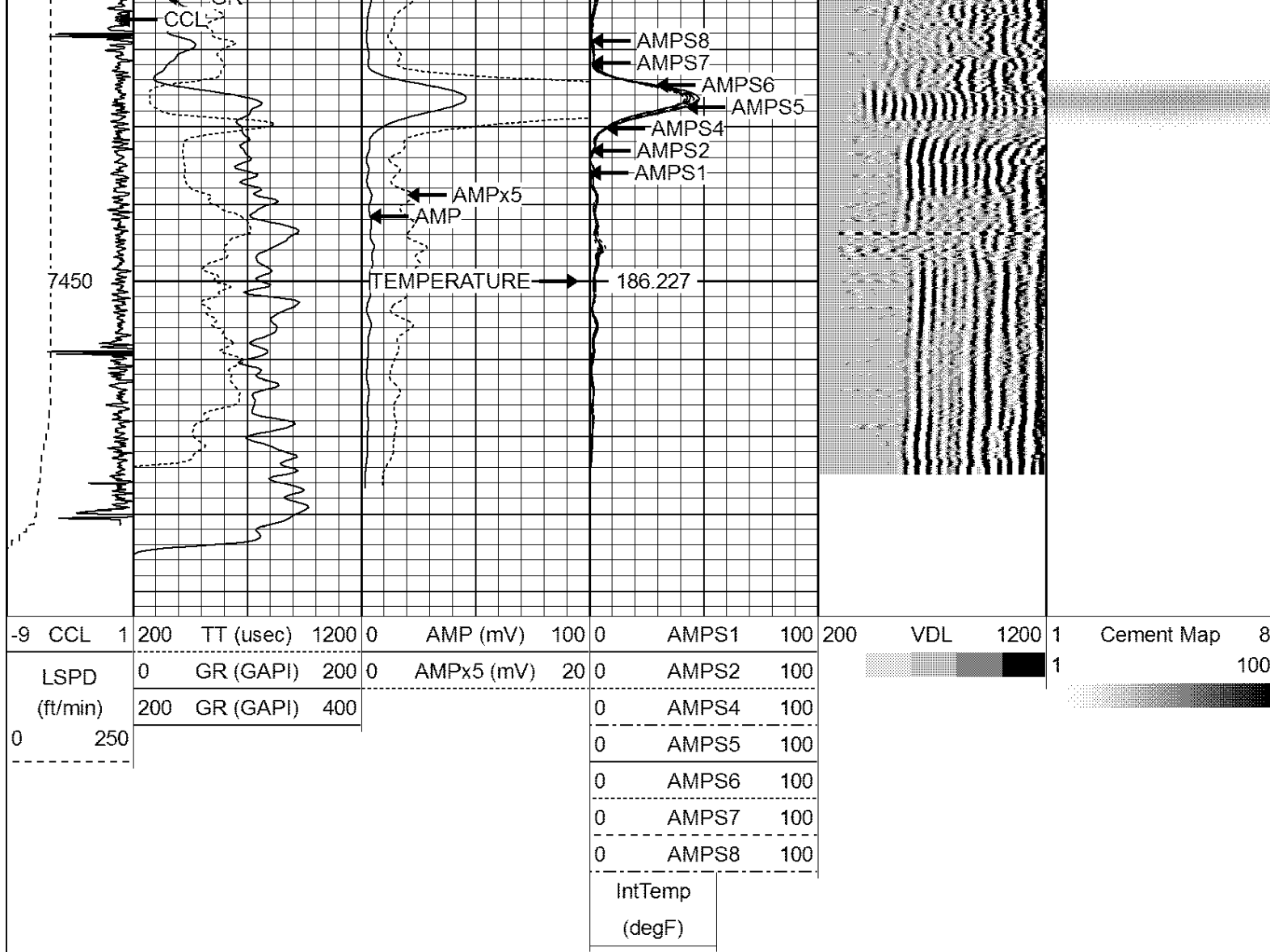
SQUEEZE HOLES











WARRIOR
ENERGY SERVICES

Company KERR McGEE OIL AND GAS

Well GEE WILLIAM E GU #2

Field WATTENBERG

County WELD

State CO