



7136 South Yale Avenue, Suite 414  
Tulsa, Oklahoma 74136-6378

phone 918.925.9739

fax 866.534.4559

[WWW.HZMUD.COM/25](http://WWW.HZMUD.COM/25)

### Customer Information

**Operator:** Noble Energy Inc.  
1625 Broadway  
Suite 2200  
Denver, Colorado 80202

**Geologist:** Teresa Malesardi  
Noble Energy Inc.

### Mud Logging Details

**Logger:** Scott Haney &  
Mark Dennis  
**Log Interval:** 6750' MD to 11906' MD  
**Start Date:** January 28, 2015  
**Release Date:** January 30, 2015

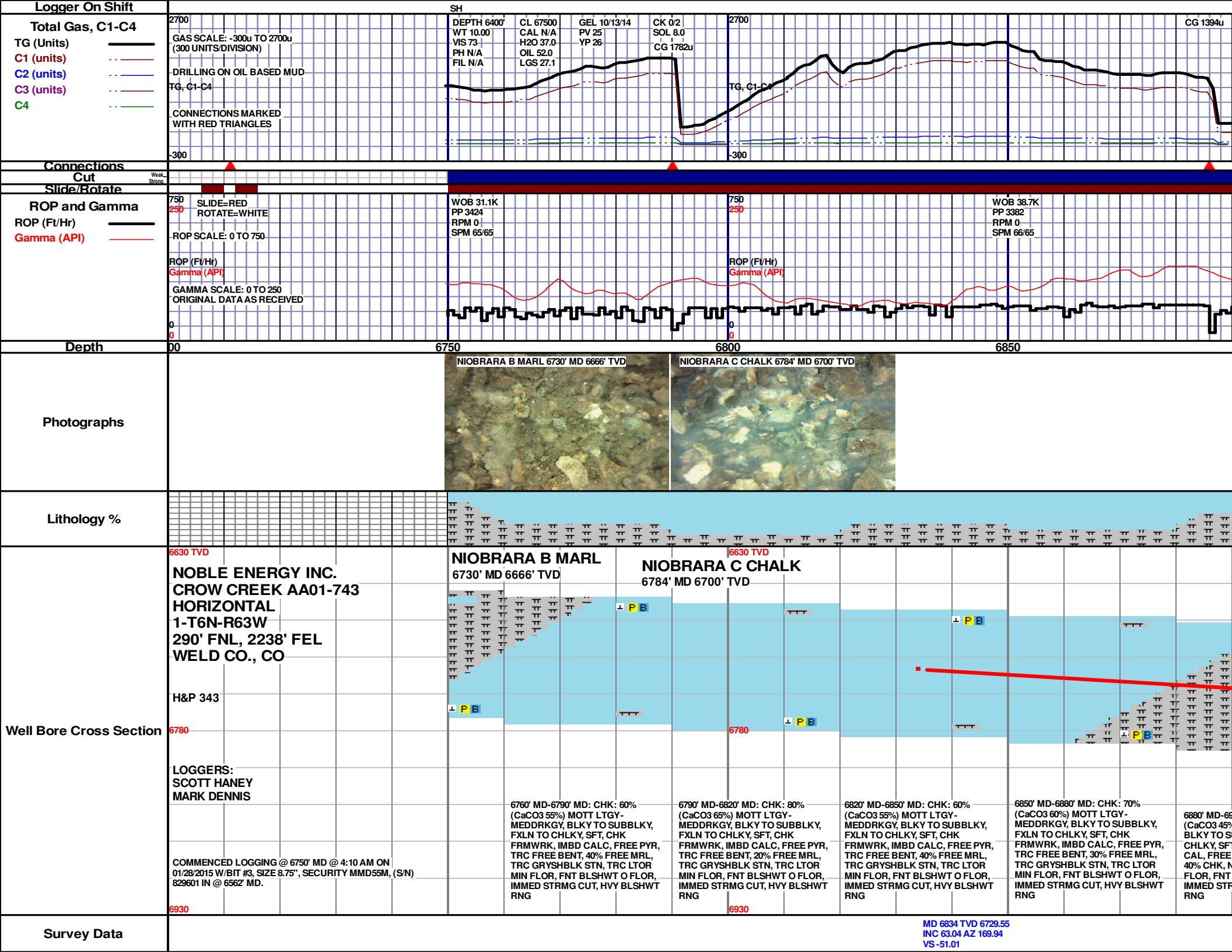
### Well Information

**Well Name:** Crow Creek AA01-743  
Horizontal

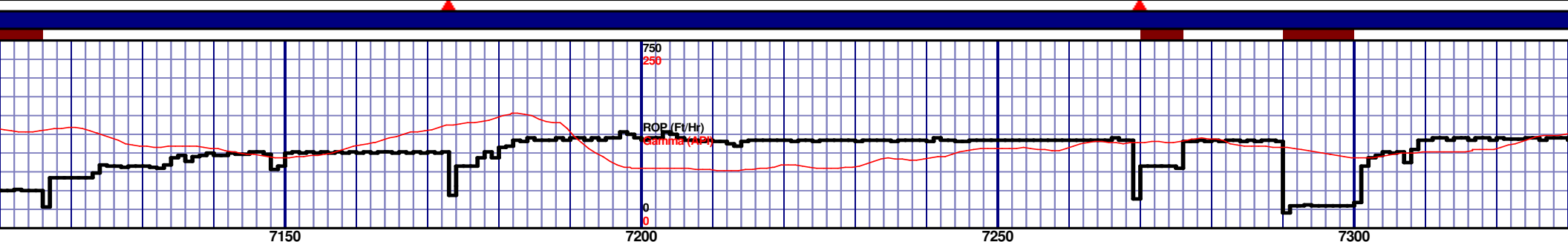
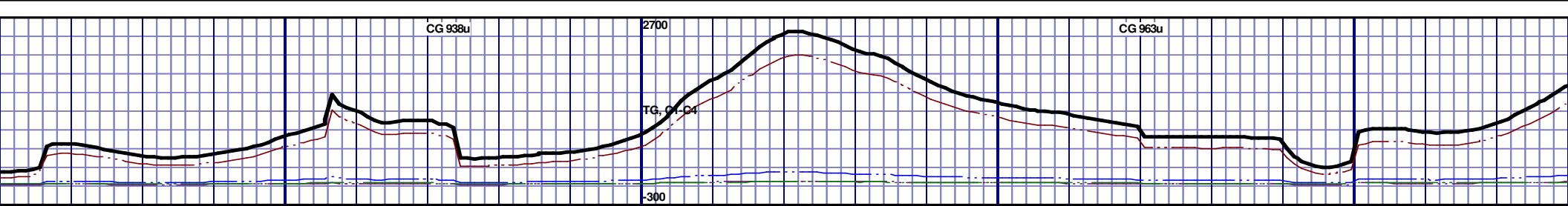
**Location:** 1-T6N-R63W  
290' FNL, 2238' FEL

**County:** Weld  
**State:** Colorado

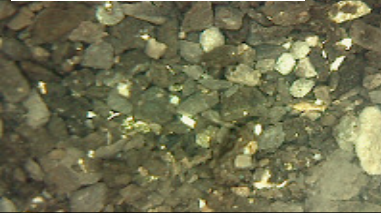
**Drilling Rig:** H&P 343  
**Total Depth:** 11906' MD  
**TD Date:** January 30, 2015  
**Formation:** Niobrara C Chalk  
**KB Elevation:** 4857'  
**GR Elevation:** 4833'  
**API Number:** 05-123-40161-0000



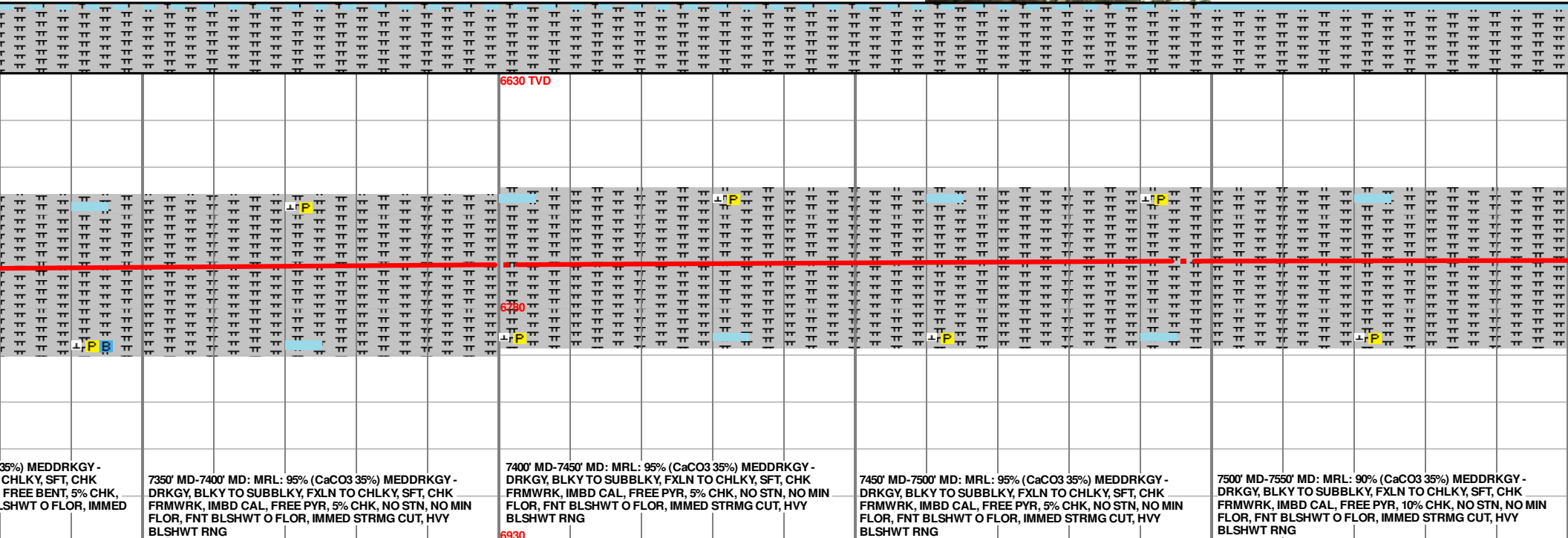
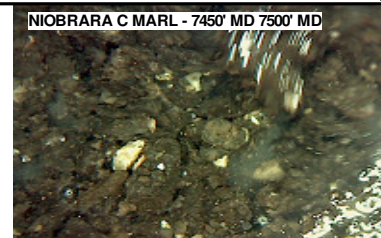
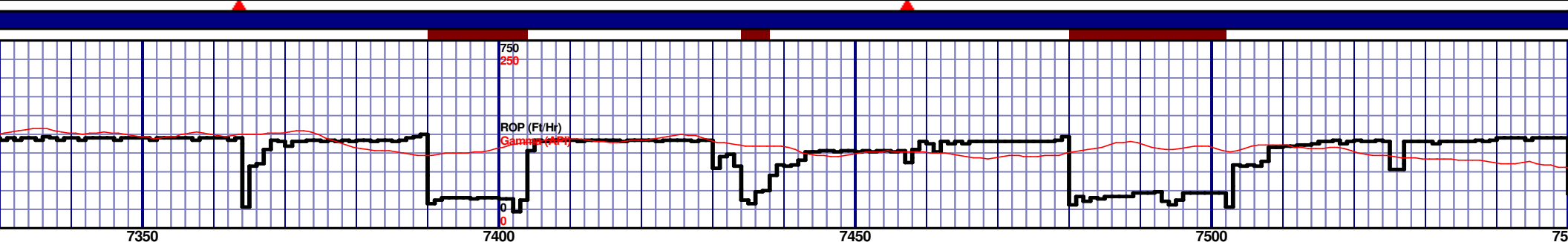




NIOBARARA C MARL - 7150' MD 7200' MD

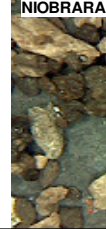
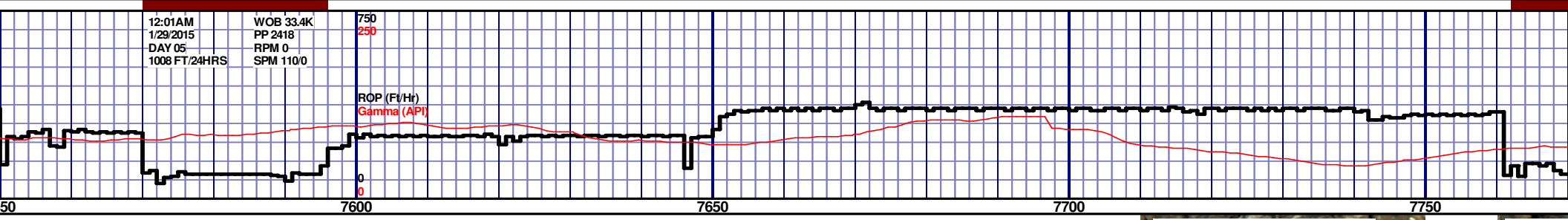
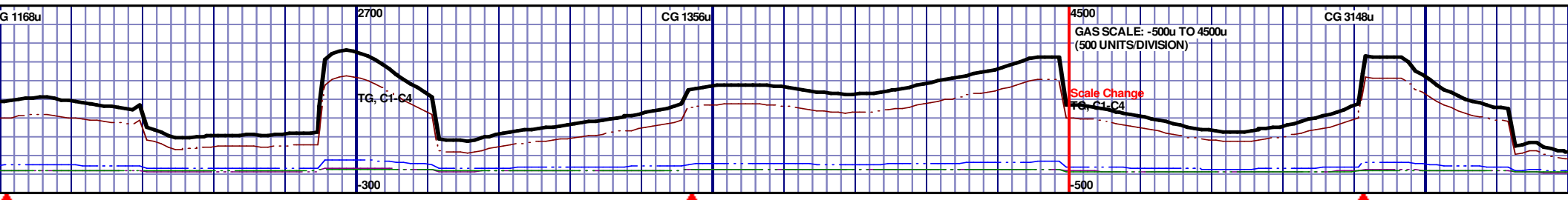


6630 TVD									
6780									
6930									
7150' MD-7200' MD: MRL: 90% (CaCO3 35%) MEDDRKGY - DRKGY, BLKY TO SUBBLKY, FXLN TO CHLKY, SFT, CHK FRMWRK, IMBD CAL, FREE PYR, TRC FREE BENT, 10% CHK, NO STN, TRC LTOR MIN FLOR, FNT BLSHWT O FLOR, IMMED STRMG CUT, HVY BLSHWT RNG									
7200' MD-7250' MD: MRL: 80% (CaCO3 35%) MEDDRKGY - DRKGY, BLKY TO SUBBLKY, FXLN TO CHLKY, SFT, CHK FRMWRK, IMBD CAL, FREE PYR, TRC FREE BENT, 20% CHK, NO STN, TRC LTOR MIN FLOR, FNT BLSHWT O FLOR, IMMED STRMG CUT, HVY BLSHWT RNG									
7250' MD-7300' MD: MRL: 95% (CaCO3 35%) MEDDRKGY - DRKGY, BLKY TO SUBBLKY, FXLN TO CHLKY, SFT, CHK FRMWRK, IMBD CAL, FREE PYR, TRC FREE BENT, 5% CHK, NO STN, TRC LTOR MIN FLOR, FNT BLSHWT O FLOR, IMMED STRMG CUT, HVY BLSHWT RNG									
7300' MD-7350' MD: MRL: 95% (CaCO3 35%) MEDDRKGY - DRKGY, BLKY TO SUBBLKY, FXLN TO CHLKY, SFT, CHK FRMWRK, IMBD CAL, FREE PYR, TRC FREE BENT, 5% CHK, NO STN, TRC LTOR MIN FLOR, FNT BLSHWT O FLOR, IMMED STRMG CUT, HVY BLSHWT RNG									



MD 7401 TVD 6752.58  
INC 91.69 AZ 177.59  
VS 508.87

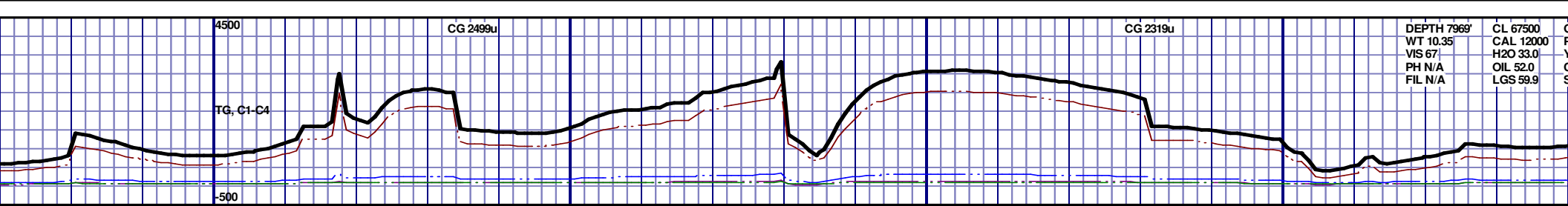
MD 7496 TVD 6750.31  
INC 91.05 AZ 178.86  
VS 603.83



6630 TVD									
NIOBARARA C CHALK 7710' MD 6749' TVD									
6730									
7550' MD-7600' MD: MRL: 90% (CaCO3 35%) MEDDRKGY - DRKGY, BLKY TO SUBBLKY, FXLN TO CHLKY, SFT, CHK FRMWRK, IMBD CAL, FREE PYR, 10% CHK, NO STN, NO MIN FLOR, FNT BLSHWT O FLOR, IMMED STRMG CUT, HVY BLSHWT RNG									
7600' MD-7650' MD: MRL: 80% (CaCO3 40%) MEDDRKGY - DRKGY, BLKY TO SUBBLKY, FXLN TO CHLKY, SFT, CHK FRMWRK, IMBD CAL, FREE PYR, 20% CHK, NO STN, NO MIN FLOR, FNT BLSHWT O FLOR, IMMED STRMG CUT, HVY BLSHWT RNG									
7650' MD-7700' MD: MRL: 80% (CaCO3 40%) MEDDRKGY - DRKGY, BLKY TO SUBBLKY, FXLN TO CHLKY, SFT, CHK FRMWRK, IMBD CAL, FREE PYR, 20% CHK, NO STN, NO MIN FLOR, FNT BLSHWT O FLOR, IMMED STRMG CUT, HVY BLSHWT RNG									
7700' MD-7750' MD: CHK: 70% (CaCO3 60%) MOTT LTGY - MEDDRKGY, BLKY TO SUBBLKY, FXLN TO CHLKY, SFT, CHK FRMWRK, IMBD CAL, FREE PYR, 30% FREE MRL, TRC GRYSHBLK STN, NO MIN FLOR, FNT BLSHWT O FLOR, IMMED STRMG CUT, HVY BLSHWT RNG									
7750' MD-7800' MD: CHK: MEDDRKGY, BLKY TO SUBBLKY, FXLN TO CHLKY, SFT, CHK FRMWRK, IMBD CAL, FREE PYR, 30% FREE MRL, TRC GRYSHBLK STN, NO MIN FLOR, FNT BLSHWT O FLOR, IMMED STRMG CUT, HVY BLSHWT RNG									

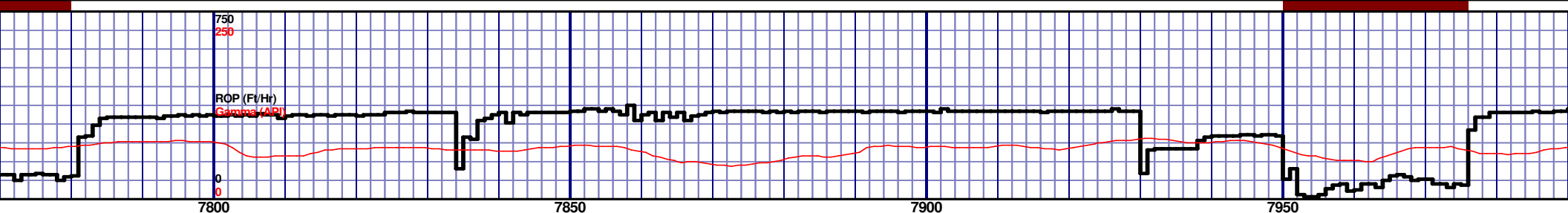
MD 7591 TVD 6749.59  
INC 89.82 AZ 180.68  
VS 698.81

MD 7685 TVD 6749.49  
INC 90.31 AZ 179.72  
VS 792.78



DEPTH 7969'  
WT 10.35  
VIS 67  
PH N/A  
FIL N/A

CL 67500  
CAL 12000  
H2O 33.0  
OIL 52.0  
LGS 59.9

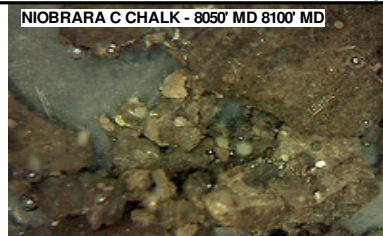
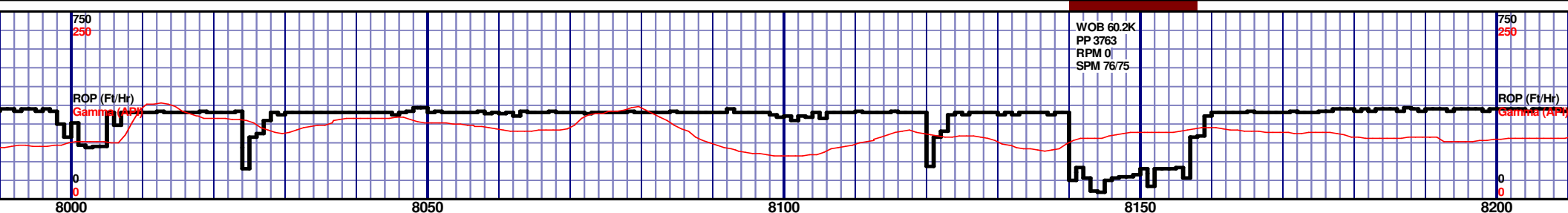


C CHALK - 7750' MD 7800' MD



6630 TVD									

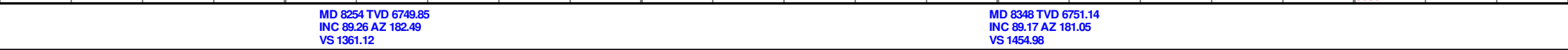
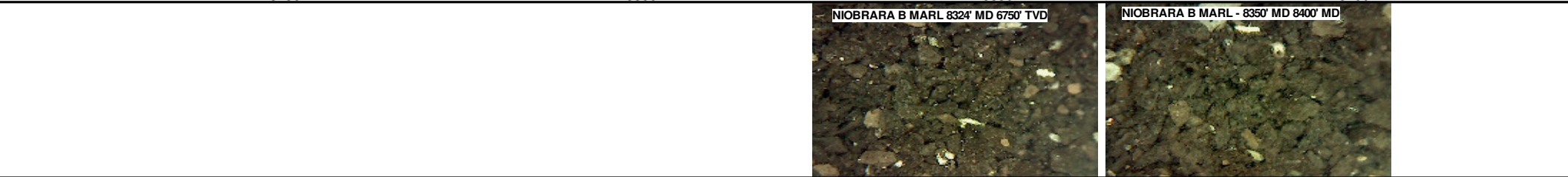


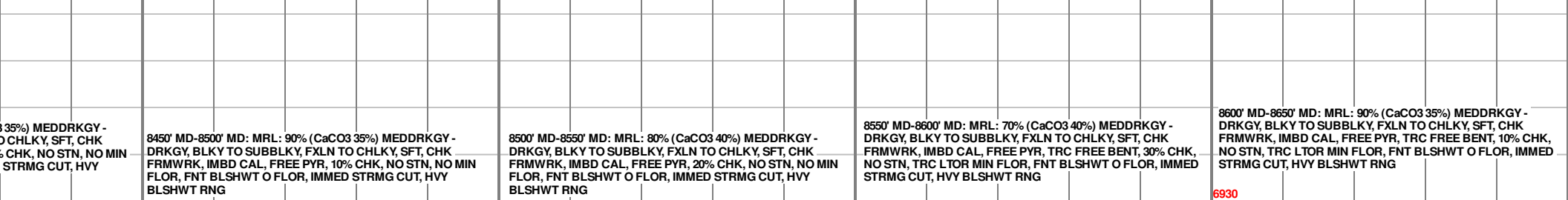
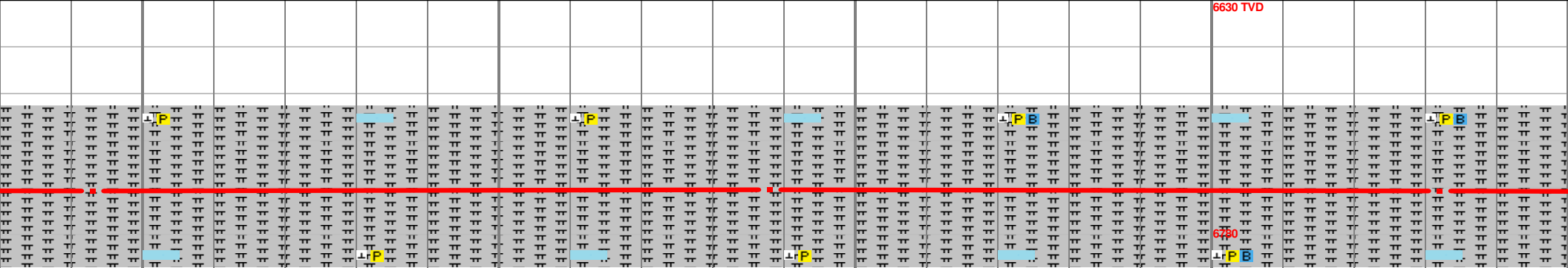
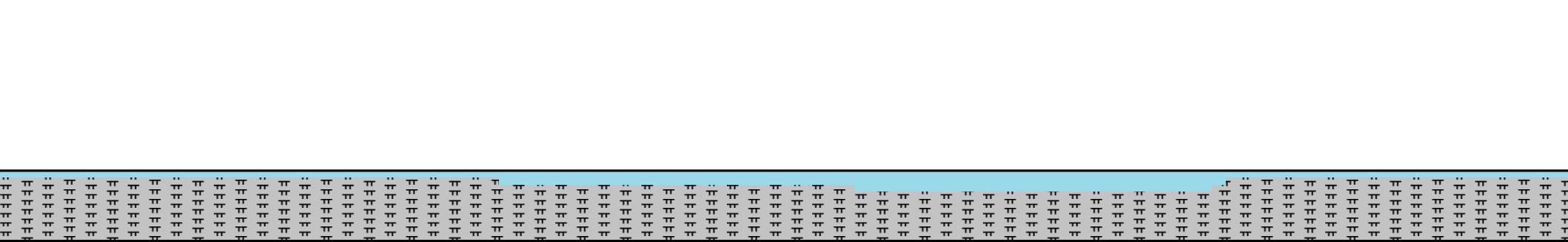
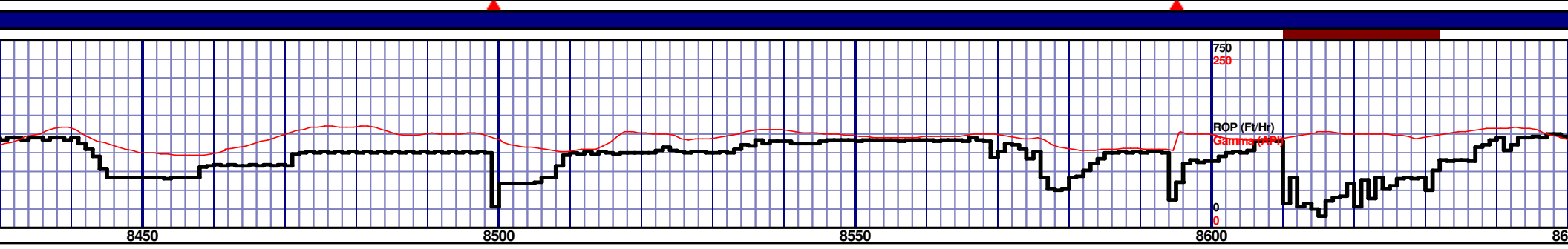
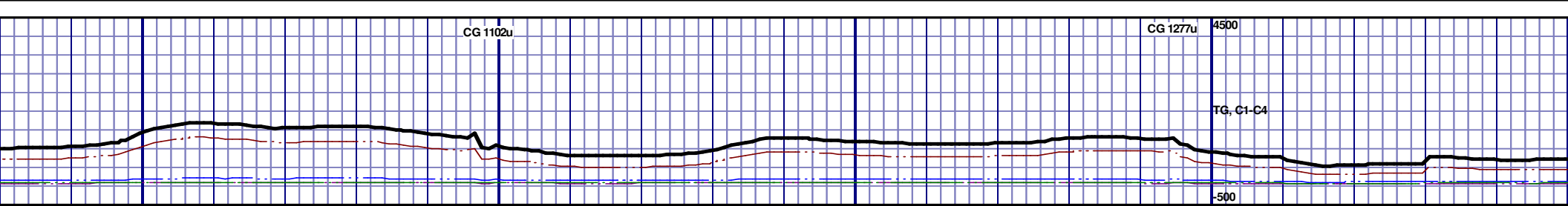
[illegible]

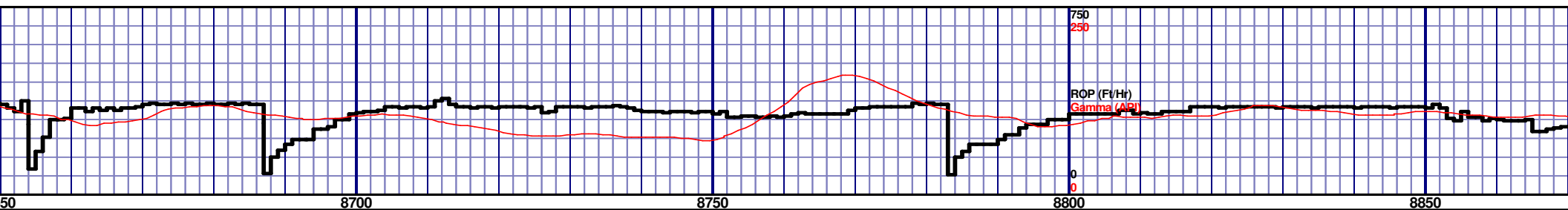
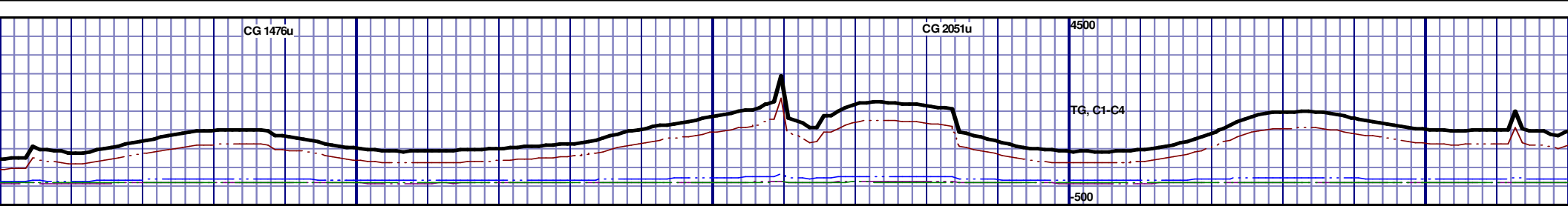
MD 8064 TVD 6747.94  
INC 89.91 AZ 182.33  
VS 1171.46

MD 8159 TVD 6748.63  
INC 89.26 AZ 182.1  
VS 1266.3



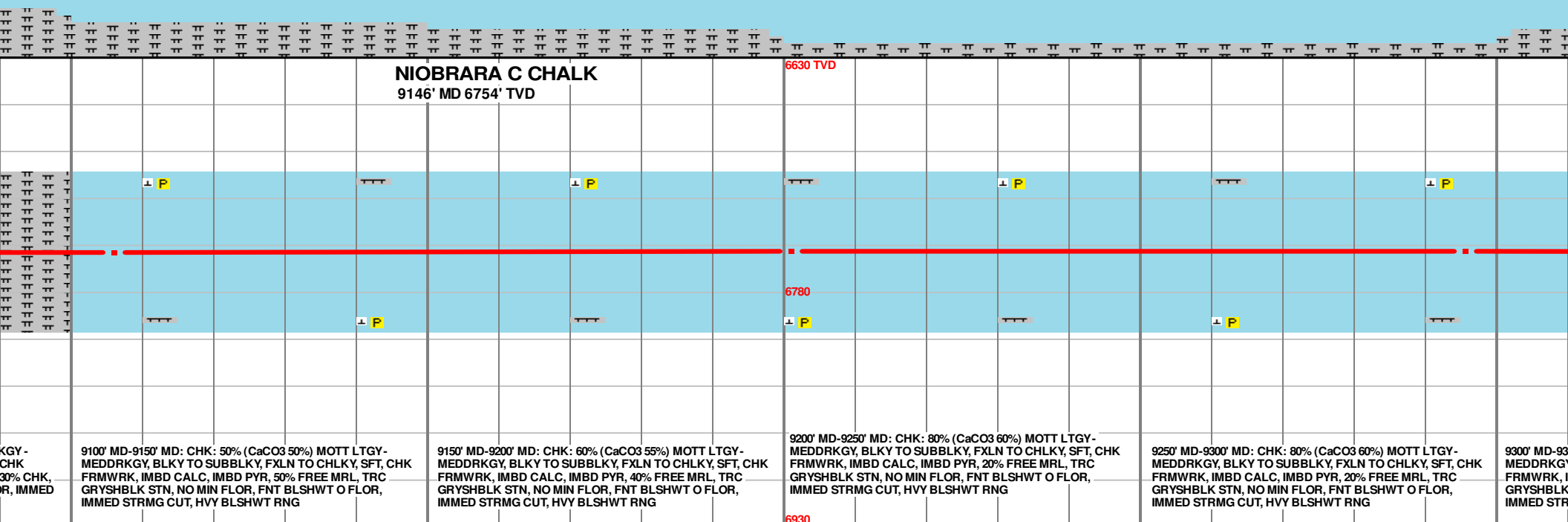
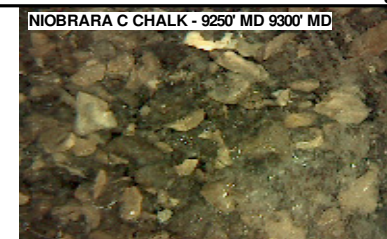
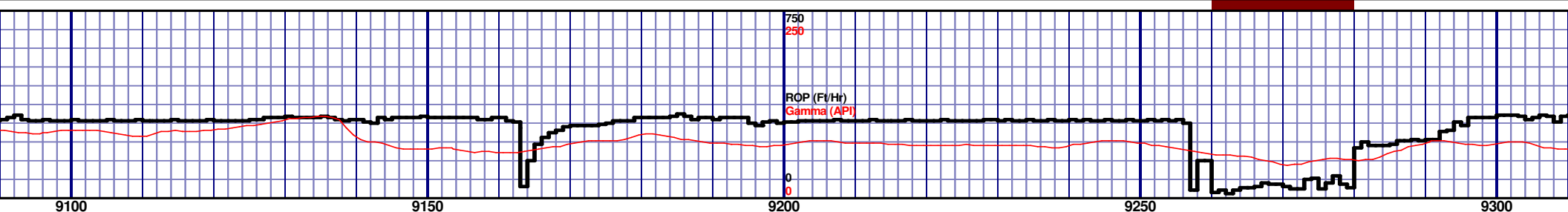






8650' MD-8700' MD: MRL: 90% (CaCO3 35%) MEDDRKGY - DRKGY, BLKY TO SUBBLKY, FXLN TO CHLKY, SFT, CHK FRMWRK, IMBD CAL, FREE PYR, TRC FREE BENT, 10% CHK, NO STN, TRC LTOR MIN FLOR, FNT BLSHWT O FLOR, IMMED STRMG CUT, HVY BLSHWT RNG	8700' MD-8750' MD: MRL: 70% (CaCO3 40%) MEDDRKGY - DRKGY, BLKY TO SUBBLKY, FXLN TO CHLKY, SFT, CHK FRMWRK, IMBD CAL, FREE PYR, TRC FREE BENT, 30% CHK, NO STN, TRC LTOR MIN FLOR, FNT BLSHWT O FLOR, IMMED STRMG CUT, HVY BLSHWT RNG	8750' MD-8800' MD: MRL: 70% (CaCO3 40%) MEDDRKGY - DRKGY, BLKY TO SUBBLKY, FXLN TO CHLKY, SFT, CHK FRMWRK, IMBD CAL, FREE PYR, TRC FREE BENT, 30% CHK, NO STN, TRC LTOR MIN FLOR, FNT BLSHWT O FLOR, IMMED STRMG CUT, HVY BLSHWT RNG	8800' MD-8850' MD: MRL: 60% (CaCO3 45%) MEDDRKGY - DRKGY, BLKY TO SUBBLKY, FXLN TO CHLKY, SFT, CHK FRMWRK, IMBD CAL, FREE PYR, TRC FREE BENT, 40% CHK, NO STN, TRC LTOR MIN FLOR, FNT BLSHWT O FLOR, IMMED STRMG CUT, HVY BLSHWT RNG	8850' MD-8900' MD: CHK MEDDRKGY, BLKY TO S FRMWRK, IMBD CALC, FREE MRL, TRC GRYSH BLSHWT O FLOR, IMMED
--	--	--	--	--

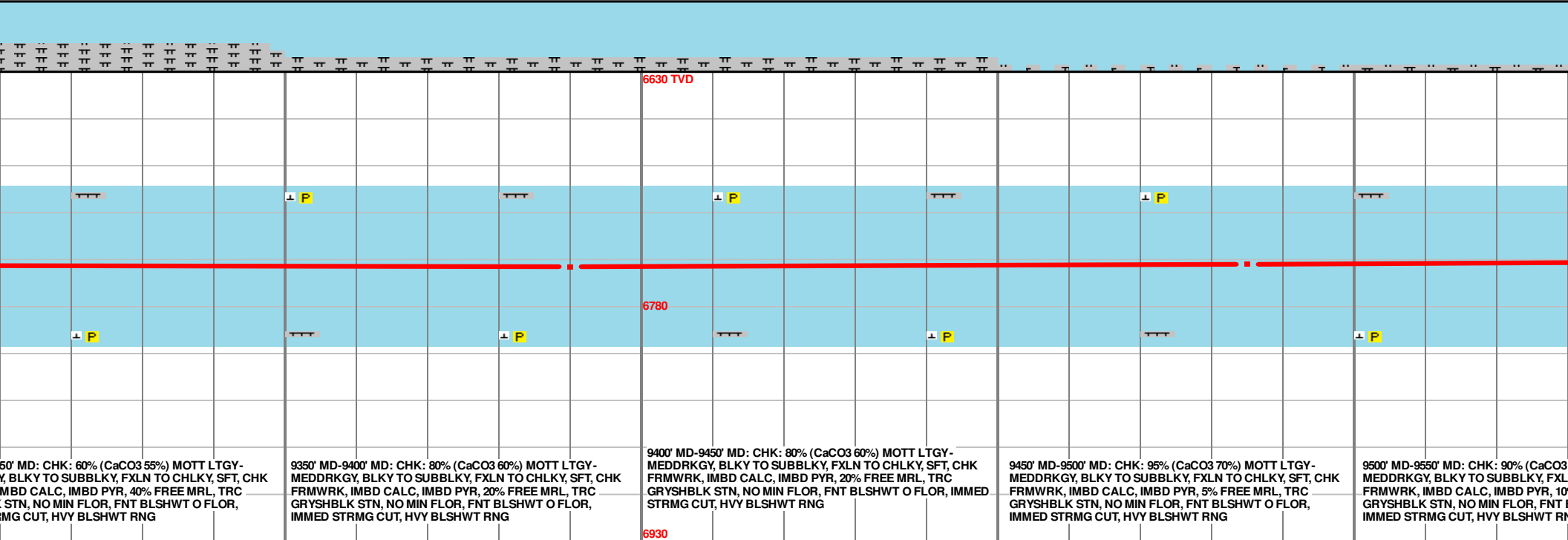
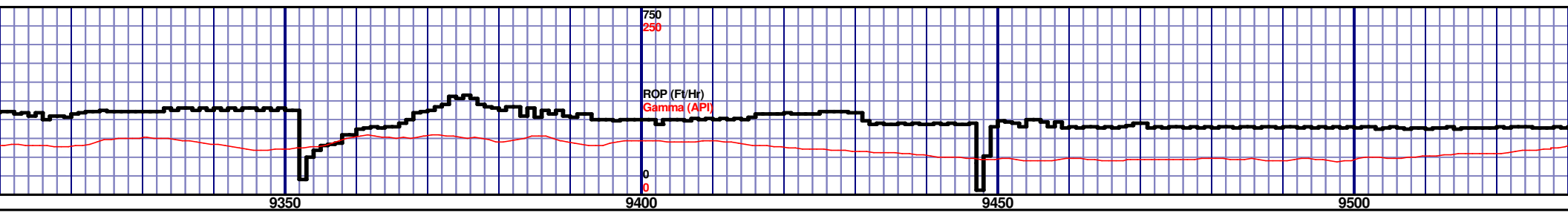
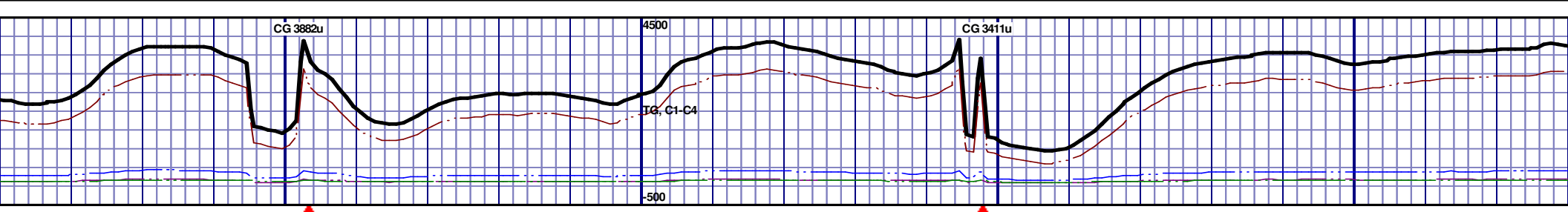


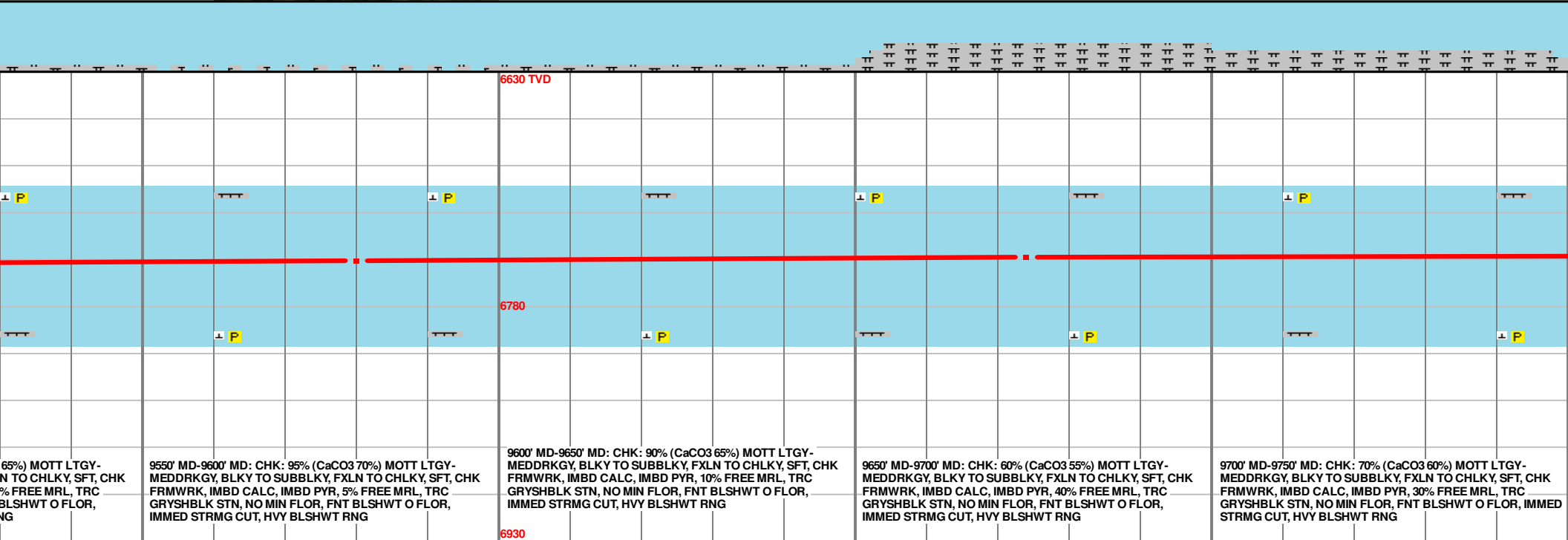
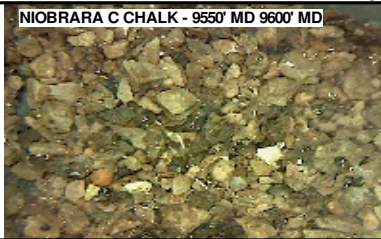
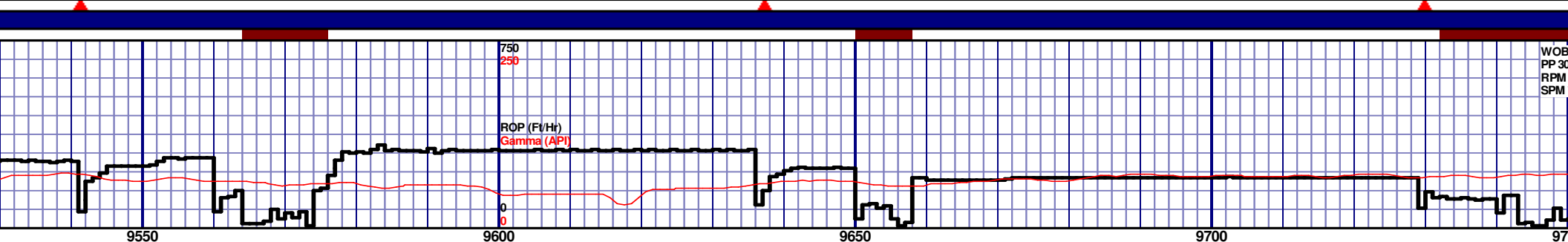
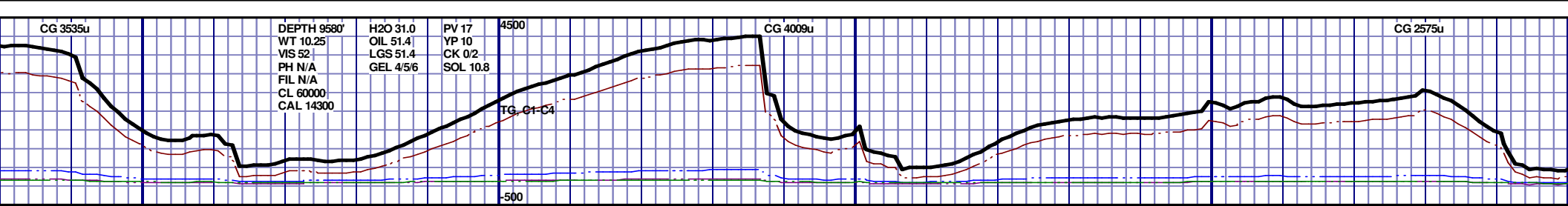


MD 9106 TVD 6754.61  
INC 90.22 AZ 177.1  
VS 2212.67

MD 9201 TVD 6754.12  
INC 90.37 AZ 176.73  
VS 2307.61

MD 9295.6 TVD 675  
INC 89.66 AZ 178.3  
VS 2402.18

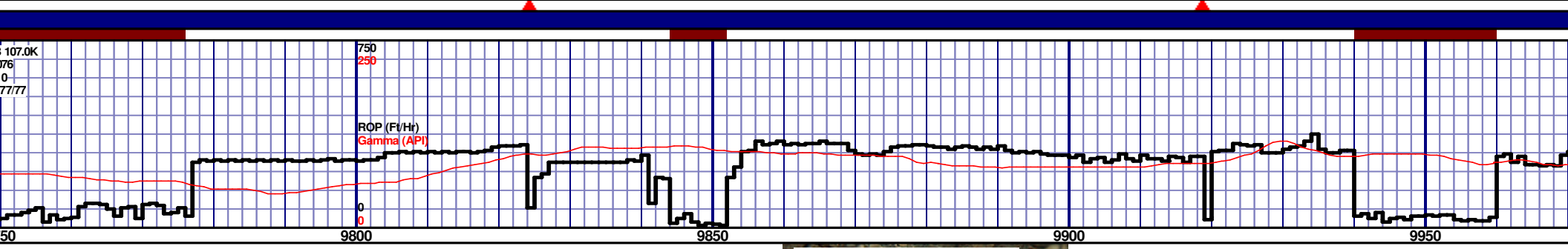
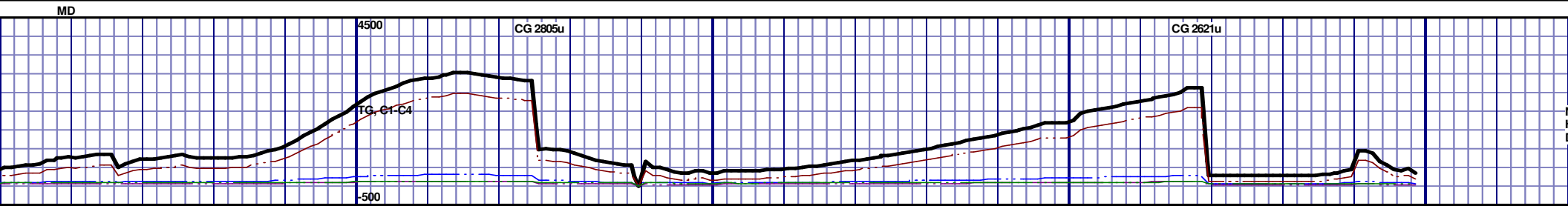




MD 9580 TVD 6751.06  
INC 90.86 AZ 178.48  
VS 2686.55

MD 9674 TVD 6748.58  
INC 92.16 AZ 179.29  
VS 2780.52





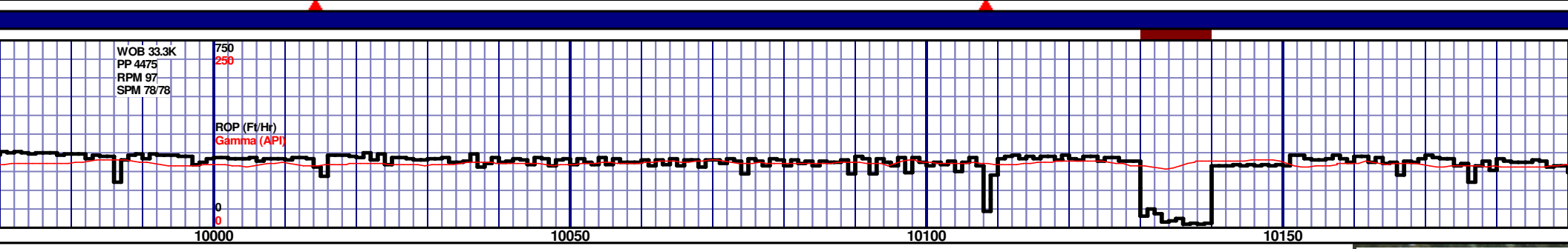
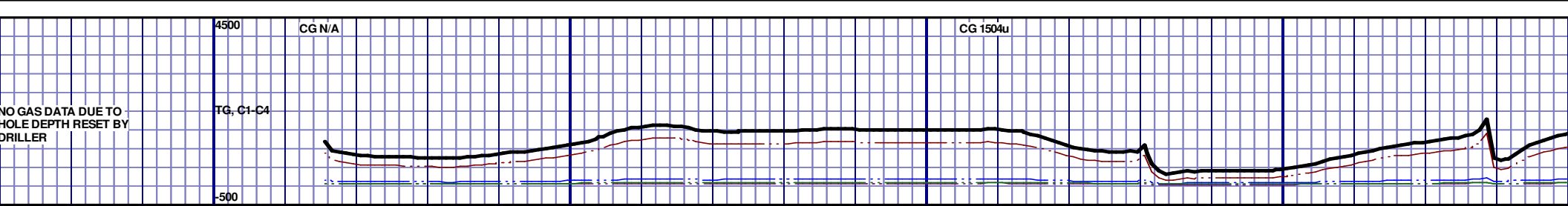
NIOBRARA C CHALK - 9850' MD 9900' MD



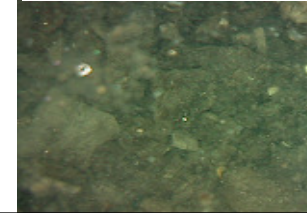
6630 TVD																			
9750' MD-9800' MD: CHK: 90% (CaCO3 65%) MOTT LTGY-MEDDRKGY, BLKY TO SUBBLKY, FXLN TO CHLKY, SFT, CHK FRMWRK, IMBD CALC, IMBD PYR, 10% FREE MRL, TRC GRYSBLK STN, NO MIN FLOR, FNT BLSHWT O FLOR, IMMED STRMG CUT, HVY BLSHWT RNG																			
9800' MD-9850' MD: CHK: 60% (CaCO3 50%) MOTT LTGY-MEDDRKGY, BLKY TO SUBBLKY, FXLN TO CHLKY, SFT, CHK FRMWRK, IMBD CALC, IMBD PYR, 40% FREE MRL, TRC GRYSBLK STN, NO MIN FLOR, FNT BLSHWT O FLOR, IMMED STRMG CUT, HVY BLSHWT RNG																			
9850' MD-9900' MD: CHK: 50% (CaCO3 45%) MOTT LTGY-MEDDRKGY, BLKY TO SUBBLKY, FXLN TO CHLKY, SFT, CHK FRMWRK, IMBD CALC, IMBD PYR, 50% FREE MRL, TRC GRYSBLK STN, NO MIN FLOR, FNT BLSHWT O FLOR, IMMED STRMG CUT, HVY BLSHWT RNG																			
9900' MD-9950' MD: MRL: 70% (CaCO3 40%) MEDDRKGY-DRKGY, BLKY TO SUBBLKY, FXLN TO CHLKY, SFT, CHK FRMWRK, IMBD CAL, FREE PYR, 30% CHK, NO STN, NO MIN FLOR, FNT BLSHWT O FLOR, IMMED STRMG CUT, HVY BLSHWT RNG																			
9950' MD-10000' MD: MRL: DRKGY, BLKY TO SUBBLKY, FXLN TO CHLKY, SFT, CHK FRMWRK, IMBD CAL, FREE PYR, 30% CHK, NO STN, NO MIN FLOR, FNT BLSHWT O FLOR, IMMED STRMG CUT, HVY BLSHWT RNG																			

MD 9769 TVD 6748.07  
INC 88.46 AZ 178.22  
VS 2875.5

MD 9863 TVD 6750.85  
INC 88.15 AZ 178.81  
VS 2969.45



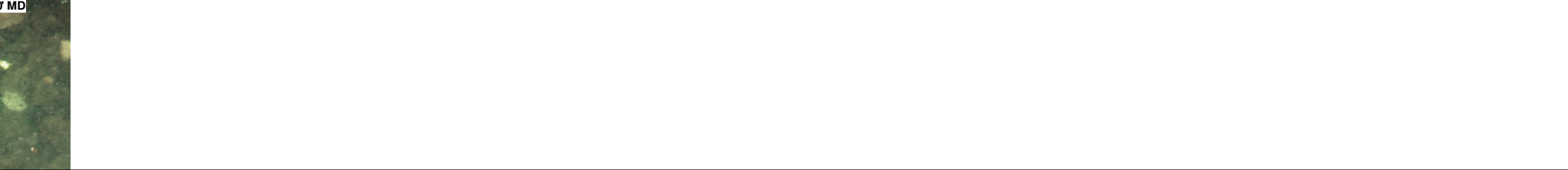
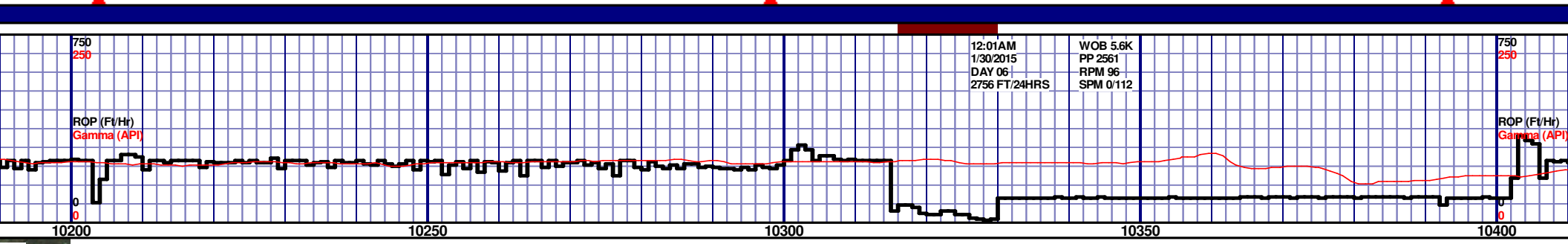
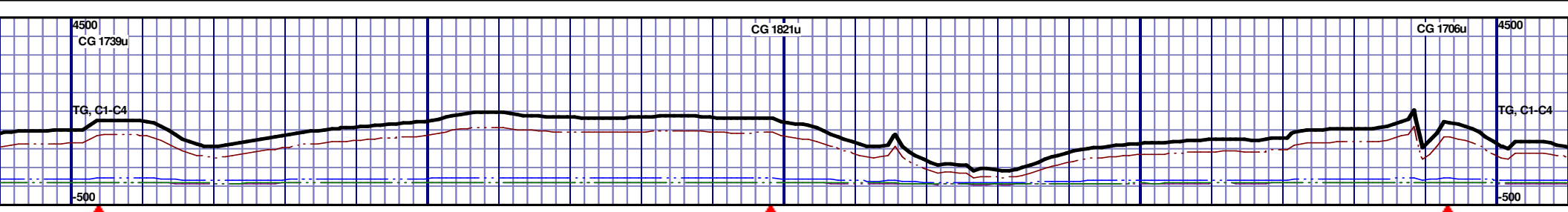
NIOBRARA C CHALK - 10150' MD 10200'



6630 TVD									
6780									
6930									
10000' MD-10050' MD: MRL: 80% (CaCO3 35%) MEDDRKGY - DRKGY, BLKY TO SUBBLKY, FXLN TO CHLKY, SFT, CHK FRMWRK, IMBD CAL, FREE PYR, 20% CHK, NO STN, NO MIN FLOR, FNT BLSHWT O FLOR, IMMED STRMG CUT, HVY BLSHWT RNG									
10050' MD-10100' MD: MRL: 70% (CaCO3 40%) MEDDRKGY - DRKGY, BLKY TO SUBBLKY, FXLN TO CHLKY, SFT, CHK FRMWRK, IMBD CAL, FREE PYR, 30% CHK, NO STN, NO MIN FLOR, FNT BLSHWT O FLOR, IMMED STRMG CUT, HVY BLSHWT RNG									
10100' MD-10150' MD: CHK: 60% (CaCO3 50%) MOTT LTGY- MEDDRKGY, BLKY TO SUBBLKY, FXLN TO CHLKY, SFT, CHK FRMWRK, IMBD CALC, IMBD PYR, 40% FREE MRL, TRC GRYSHBLK STN, NO MIN FLOR, FNT BLSHWT O FLOR, IMMED STRMG CUT, HVY BLSHWT RNG									
10150' MD-10200' MD: MRL: 70% (CaCO3 40%) MEDDRKGY, BLKY TO SUBBLKY, FXLN TO CHLKY, SFT, CHK FRMWRK, IMBD CAL, FREE PYR, 30% CHK, NO STN, NO MIN FLOR, FNT BLSHWT O FLOR, IMMED STRMG CUT, HVY BLSHWT RNG									

MD 10053 TVD 6753.51  
INC 89.75 AZ 180.08  
VS 3159.4

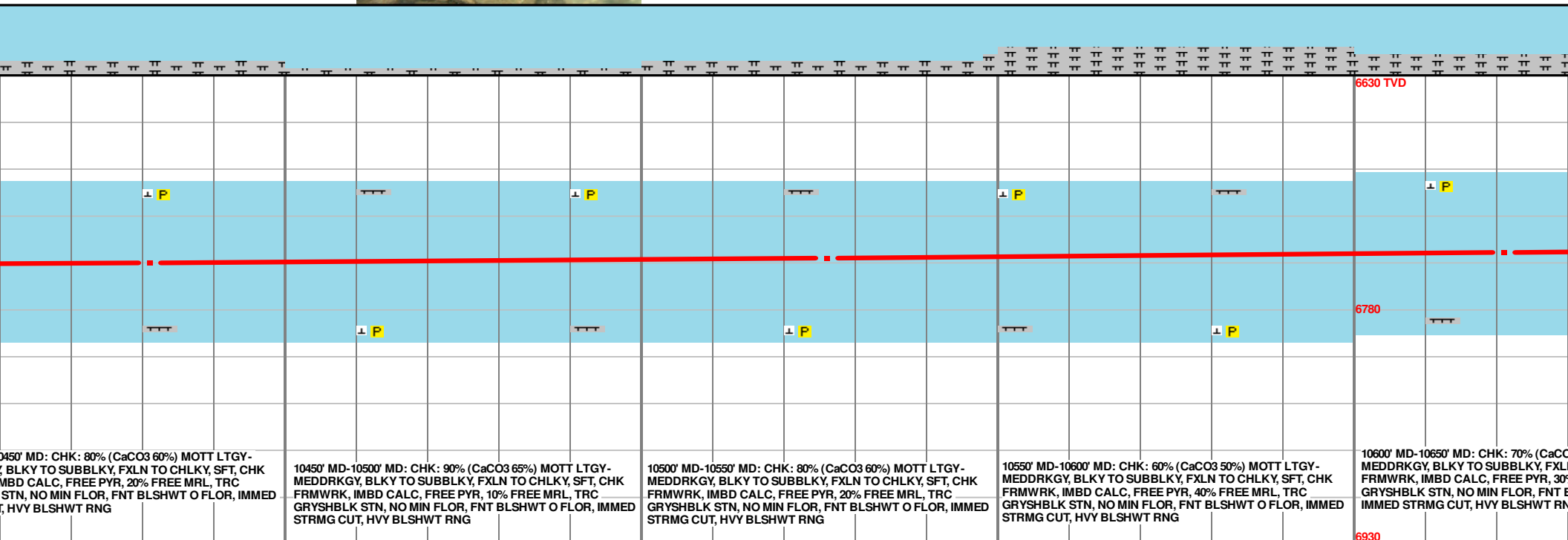
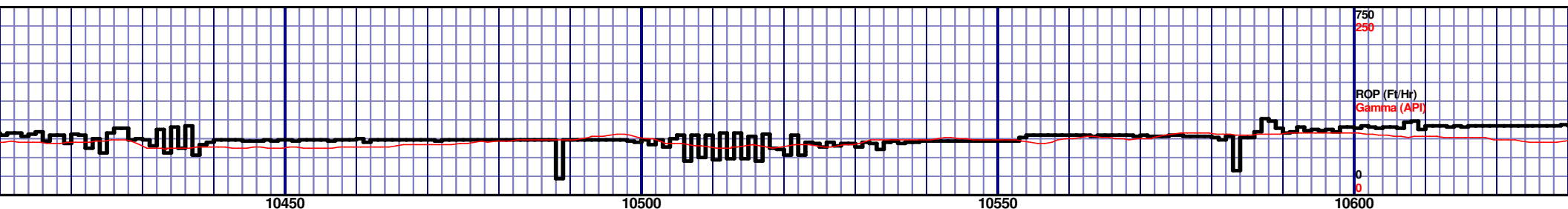
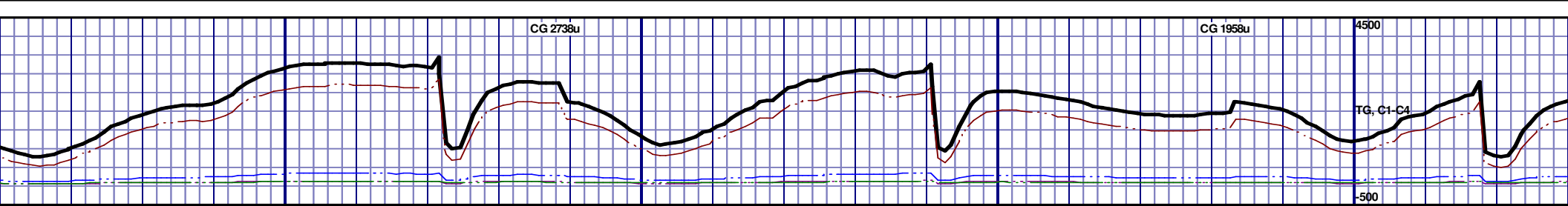
MD 10148 TVD 6753.43  
INC 90.34 AZ 180.12  
VS 3254.38



6630 TVD					6630 TVD				
P					P				
6780					6780				
P					P				
10200' MD-10250' MD: MRL: 60% (CaCO3 45%) MEDDRKGY - DRKGY, BLKY TO SUBBLKY, FXLN TO CHLKY, SFT, CHK FRMWRK, IMBD CAL, IMBD PYR, 40% CHK, NO STN, NO MIN FLOR, FNT BLSHWT O FLOR, IMMED STRMG CUT, HVY BLSHWT RNG					10250' MD-10300' MD: CHK: 70% (CaCO3 55%) MOTT LTGY- MEDDRKGY, BLKY TO SUBBLKY, FXLN TO CHLKY, SFT, CHK FRMWRK, IMBD CALC, FREE PYR, 30% FREE MRL, TRC GRYSHBLK STN, NO MIN FLOR, FNT BLSHWT O FLOR, IMMED STRMG CUT, HVY BLSHWT RNG				
6930					6930				

MD 10242 TVD 6753.05  
INC 90.12 AZ 179.29  
VS 3348.36

MD 10337 TVD 6752.21  
INC 90.89 AZ 179.36  
VS 3443.36



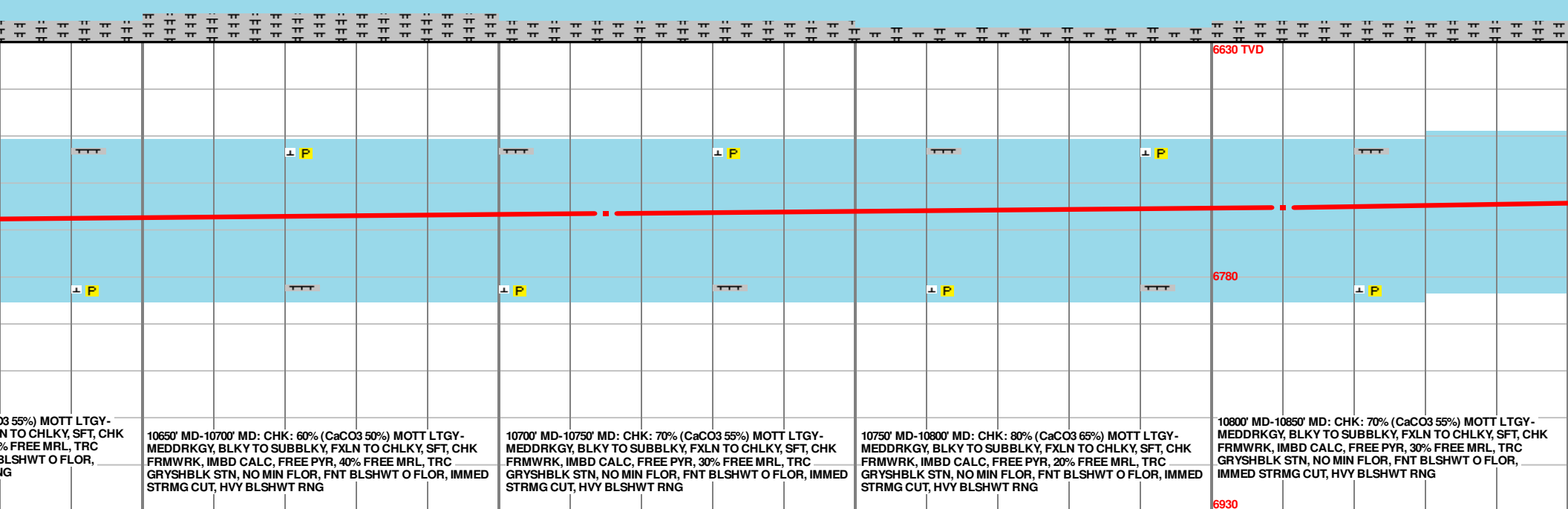
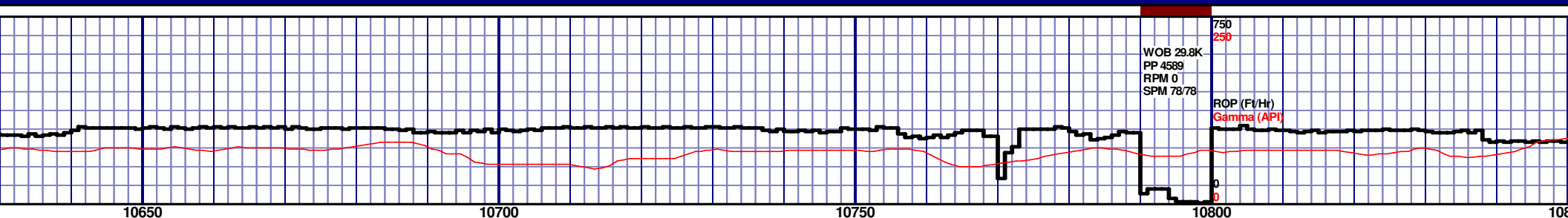
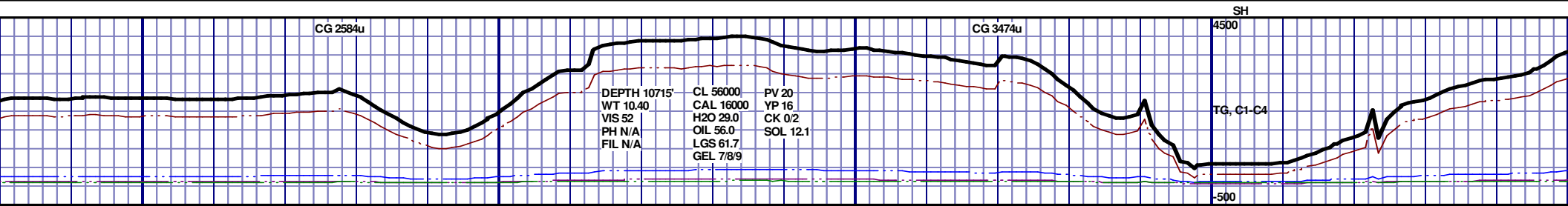
10450' MD: CHK: 80% (CaCO3 60%) MOTT LTGY-  
BLKY TO SUBBLKY, FXLN TO CHLKY, SFT, CHK  
IMBD CALC, FREE PYR, 20% FREE MRL, TRC  
STN, NO MIN FLOR, FNT BLSHWT O FLOR, IMMED  
STRMG CUT, HVY BLSHWT RNG

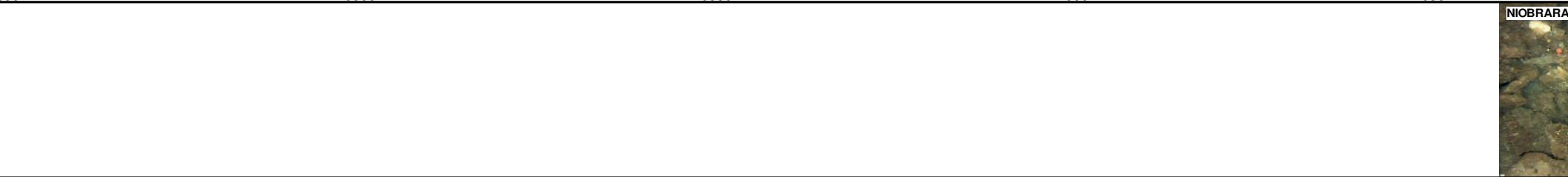
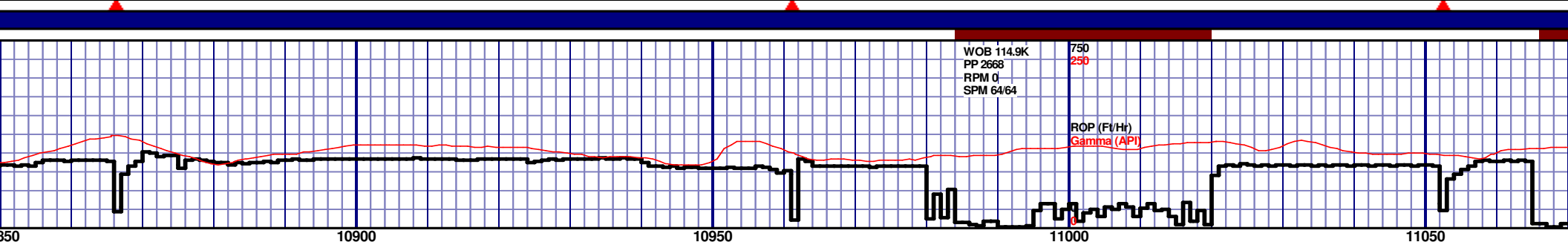
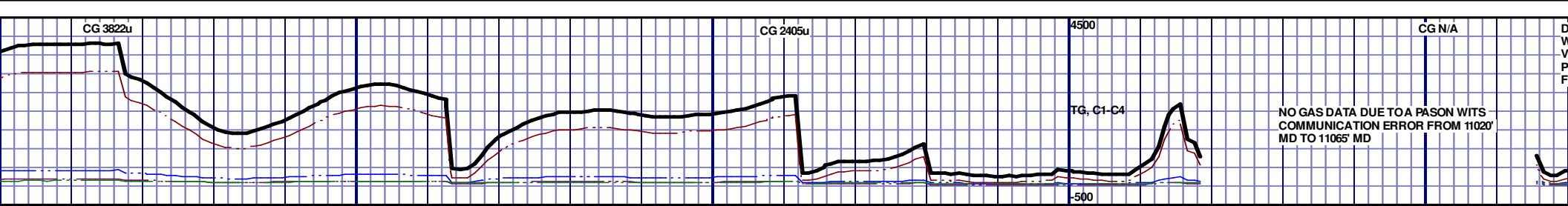
10450' MD-10500' MD: CHK: 90% (CaCO3 65%) MOTT LTGY-  
MEDDRKGY, BLKY TO SUBBLKY, FXLN TO CHLKY, SFT, CHK  
FRMWRK, IMBD CALC, FREE PYR, 10% FREE MRL, TRC  
GRYSHBLK STN, NO MIN FLOR, FNT BLSHWT O FLOR, IMMED  
STRMG CUT, HVY BLSHWT RNG

10500' MD-10550' MD: CHK: 80% (CaCO3 60%) MOTT LTGY-  
MEDDRKGY, BLKY TO SUBBLKY, FXLN TO CHLKY, SFT, CHK  
FRMWRK, IMBD CALC, FREE PYR, 20% FREE MRL, TRC  
GRYSHBLK STN, NO MIN FLOR, FNT BLSHWT O FLOR, IMMED  
STRMG CUT, HVY BLSHWT RNG

10550' MD-10600' MD: CHK: 60% (CaCO3 50%) MOTT LTGY-  
MEDDRKGY, BLKY TO SUBBLKY, FXLN TO CHLKY, SFT, CHK  
FRMWRK, IMBD CALC, FREE PYR, 40% FREE MRL, TRC  
GRYSHBLK STN, NO MIN FLOR, FNT BLSHWT O FLOR, IMMED  
STRMG CUT, HVY BLSHWT RNG

10600' MD-10650' MD: CHK: 70% (CaCO3 50%) MOTT LTGY-  
MEDDRKGY, BLKY TO SUBBLKY, FXLN TO CHLKY, SFT, CHK  
FRMWRK, IMBD CALC, FREE PYR, 30% FREE MRL, TRC  
GRYSHBLK STN, NO MIN FLOR, FNT BLSHWT O FLOR, IMMED  
STRMG CUT, HVY BLSHWT RNG





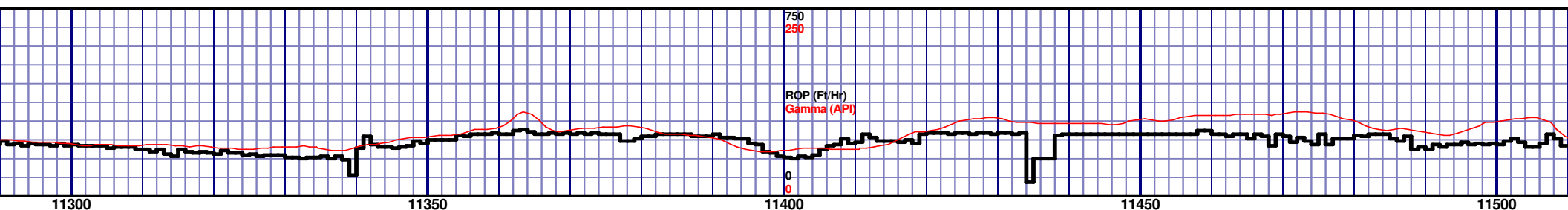
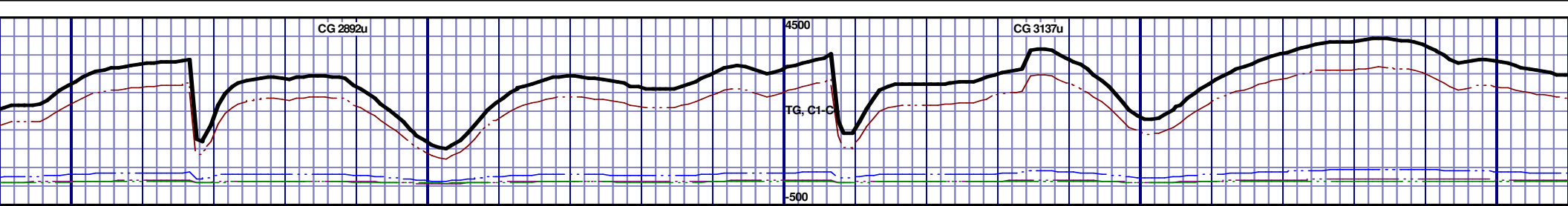
10850' MD-10900' MD: CHK: 70% (CaCO3 55%) MOTT LTGY-MEDDRKGY, BLKY TO SUBBLKY, FXLN TO CHLKY, SFT, CHK FRMWRK, IMBD CALC, FREE PYR, 30% FREE MRL, TRC GRYSBLK STN, NO MIN FLOR, FNT BLSHWT O FLOR, IMMED STRMG CUT, HVY BLSHWT RNG				10900' MD-10950' MD: CHK: 60% (CaCO3 55%) MOTT LTGY-MEDDRKGY, BLKY TO SUBBLKY, FXLN TO CHLKY, SFT, CHK FRMWRK, IMBD CALC, FREE PYR, 40% FREE MRL, TRC GRYSBLK STN, NO MIN FLOR, FNT BLSHWT O FLOR, IMMED STRMG CUT, HVY BLSHWT RNG				10950' MD-11000' MD: MRL: 80% (CaCO3 40%) MEDDRKGY - DRKGY, BLKY TO SUBBLKY, FXLN TO CHLKY, SFT, CHK FRMWRK, IMBD CAL, FREE PYR, TRC FREE BENT, 20% CHK, NO STN, TRC LTOR MIN FLOR, FNT BLSHWT O FLOR, IMMED STRMG CUT, HVY BLSHWT RNG				11000' MD-11050' MD: MRL: 70% (CaCO3 40%) MEDDRKGY - DRKGY, BLKY TO SUBBLKY, FXLN TO CHLKY, SFT, CHK FRMWRK, IMBD CAL, IMBD PYR, 30% CHK, NO STN, NO MIN FLOR, FNT BLSHWT O FLOR, IMMED STRMG CUT, HVY BLSHWT RNG				11050' MD-11100' MD: CHK: 70% (CaCO3 55%) MOTT LTGY-MEDDRKGY, BLKY TO SUBBLKY, FXLN TO CHLKY, SFT, CHK FRMWRK, IMBD CALC, FREE PYR, 30% FREE MRL, TRC GRYSBLK STN, NO MIN FLOR, FNT BLSHWT O FLOR, IMMED STRMG CUT, HVY BLSHWT RNG			
6630 TVD				6780				6930				6930				6930			

MD 10905 TVD 6729.33  
INC 94.41 AZ 179.03  
VS 4010.8

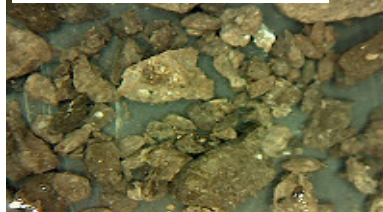
MD 10999 TVD 6722.22  
INC 94.26 AZ 179.87  
VS 4104.53



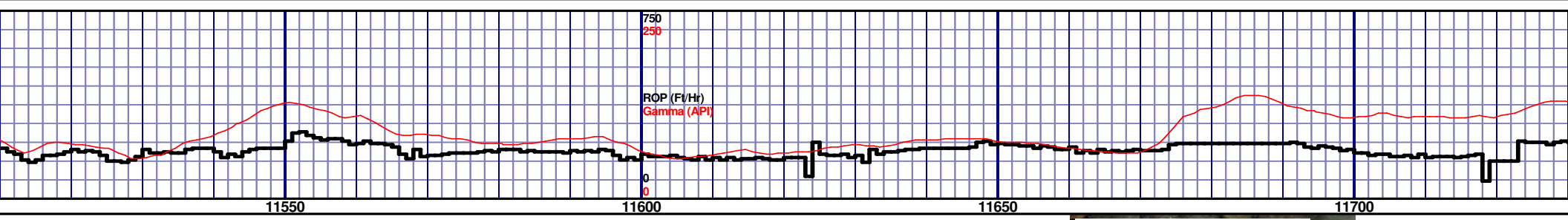
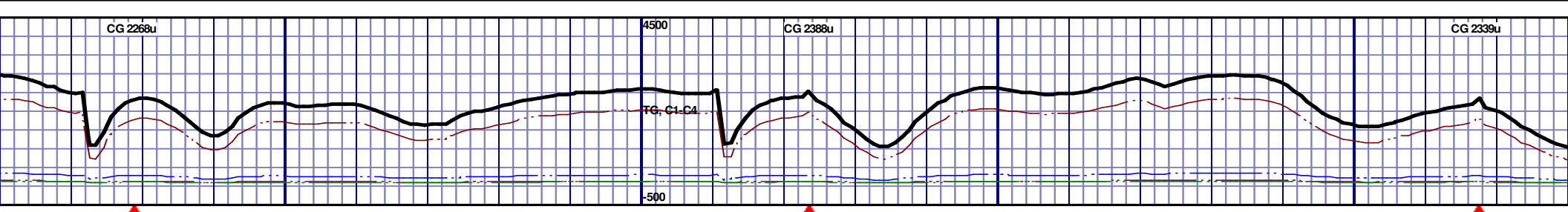




NIOBRARA C CHALK - 11350' MD 11400' MD



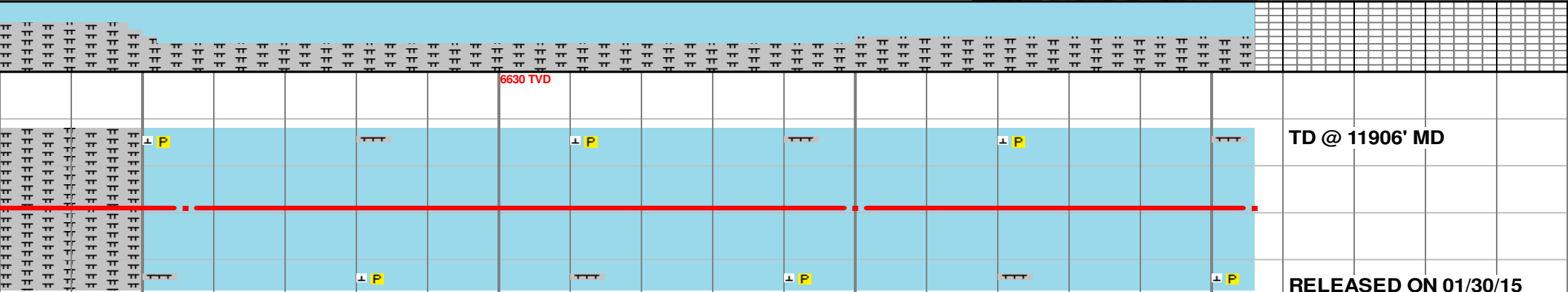
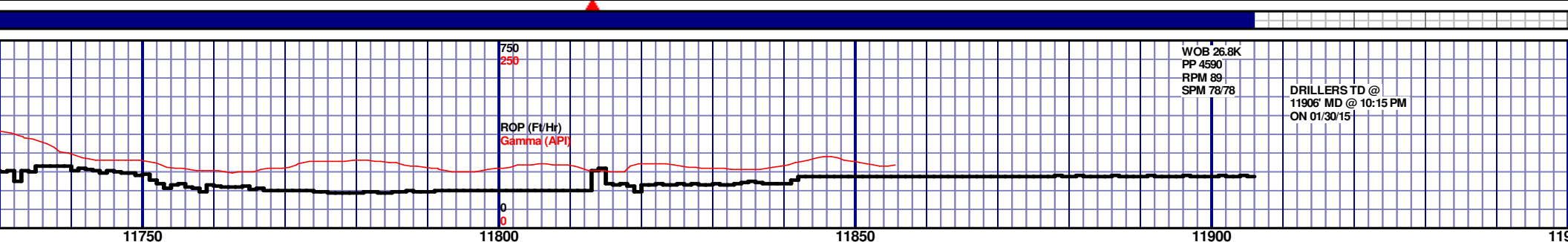
<p>LTGY - SFT, CHK TRC OR, IMMED</p>	<p>11300' MD-11350' MD: CHK: 80% (CaCO3 65%) MOTT LTGY - MEDDRKGY, BLKY TO SUBBLKY, FXLN TO CHLKY, SFT, CHK FRMWRK, IMBD CALC, FREE PYR, 20% FREE MRL, TRC GRYSBLK STN, NO MIN FLOR, FNT BLSHWT O FLOR, IMMED STRMG CUT, HVY BLSHWT RNG</p>	<p>11350' MD-11400' MD: CHK: 70% (CaCO3 60%) MOTT LTGY - MEDDRKGY, BLKY TO SUBBLKY, FXLN TO CHLKY, SFT, CHK FRMWRK, IMBD CALC, FREE PYR, 30% FREE MRL, TRC GRYSBLK STN, NO MIN FLOR, FNT BLSHWT O FLOR, IMMED STRMG CUT, HVY BLSHWT RNG</p>	<p>11400' MD-11450' MD: CHK: 60% (CaCO3 55%) MOTT LTGY - MEDDRKGY, BLKY TO SUBBLKY, FXLN TO CHLKY, SFT, CHK FRMWRK, IMBD CALC, FREE PYR, 40% FREE MRL, TRC GRYSBLK STN, NO MIN FLOR, FNT BLSHWT O FLOR, IMMED STRMG CUT, HVY BLSHWT RNG</p>	<p>11450' MD-11500' MD: CHK: 70% (CaCO3 60%) MOTT LTGY - MEDDRKGY, BLKY TO SUBBLKY, FXLN TO CHLKY, SFT, CHK FRMWRK, IMBD CALC, FREE PYR, 30% FREE MRL, TRC GRYSBLK STN, NO MIN FLOR, FNT BLSHWT O FLOR, IMMED STRMG CUT, HVY BLSHWT RNG</p>	<p>11500' MD-11550' MD: CHK: 70% (CaCO3 60%) MOTT LTGY - MEDDRKGY, BLKY TO SUBBLKY, FXLN TO CHLKY, SFT, CHK FRMWRK, IMBD CALC, FREE PYR, 30% FREE MRL, TRC GRYSBLK STN, NO MIN FLOR, FNT BLSHWT O FLOR, IMMED STRMG CUT, HVY BLSHWT RNG</p>
--------------------------------------	---	---	---	---	---



11550' MD: CHK: 60% (CaCO3 55%) MOTT LTGY - Y, BLKY TO SUBBLKY, FXLN TO CHLKY, SFT, CHK IMBD CALC, FREE PYR, 40% FREE MRL, TRC STN, NO MIN FLOR, FNT BLSHWT O FLOR, IMMED T, HVY BLSHWT RNG				11550' MD-11600' MD: MRL: 60% (CaCO3 50%) MEDDRKGY - DRKGY, BLKY TO SUBBLKY, FXLN TO CHLKY, SFT, CHK FRMWKR, IMBD CAL, IMBD PYR, 40% CHK, NO STN, NO MIN FLOR, FNT BLSHWT O FLOR, IMMED STRMG CUT, HVY BLSHWT RNG				11600' MD-11650' MD: CHK: 60% (CaCO3 55%) MOTT LTGY - MEDDRKGY, BLKY TO SUBBLKY, FXLN TO CHLKY, SFT, CHK FRMWKR, IMBD CALC, FREE PYR, 40% FREE MRL, TRC GRYSHBLK STN, NO MIN FLOR, FNT BLSHWT O FLOR, IMMED STRMG CUT, HVY BLSHWT RNG				11650' MD-11700' MD: CHK: 60% (CaCO3 55%) MOTT LTGY - MEDDRKGY, BLKY TO SUBBLKY, FXLN TO CHLKY, SFT, CHK FRMWKR, IMBD CALC, FREE PYR, 40% FREE MRL, TRC GRYSHBLK STN, NO MIN FLOR, FNT BLSHWT O FLOR, IMMED STRMG CUT, HVY BLSHWT RNG				11700' MD-11750' MD: MRL: 70% (CaCO3 50%) MEDDRKGY, BLKY TO SUBBLKY, FXLN TO FRMWKR, IMBD CALC, IMBD PYR, 30% FLOR, FNT BLSHWT O FLOR, IMMED S BLSHWT RNG			
630 TVD				6780				6930											

MD 11567 TVD 6716.77  
INC 89.48 AZ 178.1  
VS 4672.27

MD 11662 TVD 6717.08  
INC 90.15 AZ 178.01  
VS 4767.26

[illegible]

MD 11756 TVD 6717.05 INC 89.88 AZ 177.81 VS 4861.25	MD 11850 TVD 6716.97 INC 90.22 AZ 177.65 VS 4955.23	PTB: MD 11906 TVD 6716.76 INC 90.22 AZ 177.65 VS 5011.22
---	---	--

