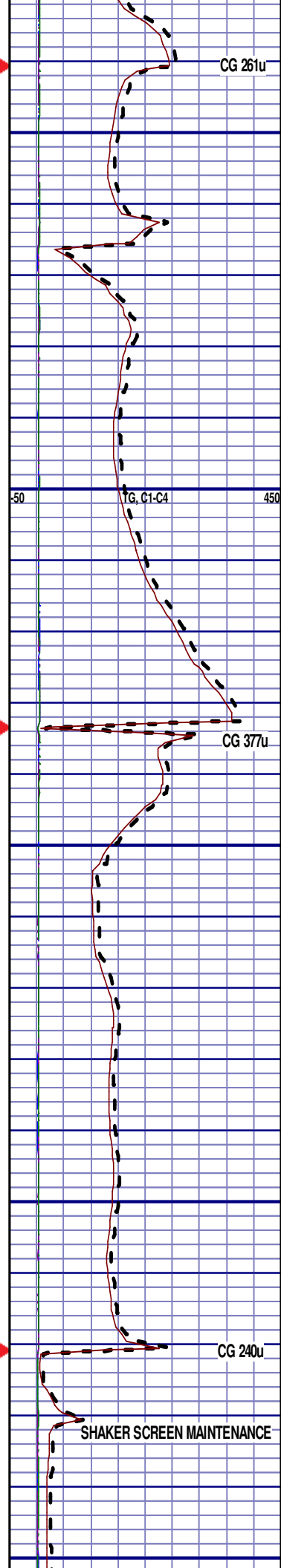


2900' MD-3000' MD: SLTST: 70% LTGY
- MEDLTGY, FRI, FN GRN, W SRTD,
CALC CMT, SANDY, FREE SLTY SH,
IMBD PYR, INTGR POR, NO STN,
NO FLOR, NO O FLOR, NO CUT, NO
RNG

3000' MD-3100' MD: SLTST: 50% LTGY
- MEDLTGY, FRI, FN GRN, W SRTD,
CALC CMT, SANDY, FREE SLTY SH,
IMBD PYR, INTGR POR, NO STN,
NO FLOR, NO O FLOR, NO CUT, NO
RNG



MD 3169 TVD 3145.58
INC 10.71 AZ 263.56
VS 70.06

ROP (Fm)
Gamma (PI)

1500
250

3200

PIERRE 3100' MD - 3200' MD



3100' MD-3200' MD: SLTST: 60% LTGY
- MEDLTGY, FRI, FN GRN, W SRTD,
CALC CMT, SANDY, FREE SLTY SH,
IMBD PYR, INTGR POR, NO STN,
NO FLOR, NO O FLOR, NO CUT, NO
RNG

INACCURATE GAS
DATA FROM 3131'
MD TO 3292' MD
DUE TO
CHANGING OUT
SHAKER
SCREENS

-50

TG, C1-C4

450

PARKMAN - 3215' MD 3191' TVD



PARKMAN

3215' MD 3191' TVD

CG MASKED BY SHAKER
SCREEN MAINTENANCE

MD 3264 TVD 3238.85
INC 11.23 AZ 263.48
VS 74.04

3250

3200'- 3300': SS: 90% PRED WHT -
LTGY - OPQ, FRI, FN GRN, WSRD,
CALC CMT, FREE SLTST, IMBD PYR,
ABDT IMBD GLAUC, INTGR POR,
NO STN, NO MIN FLOR, NO O
FLOR, NO CUT, NO RNG

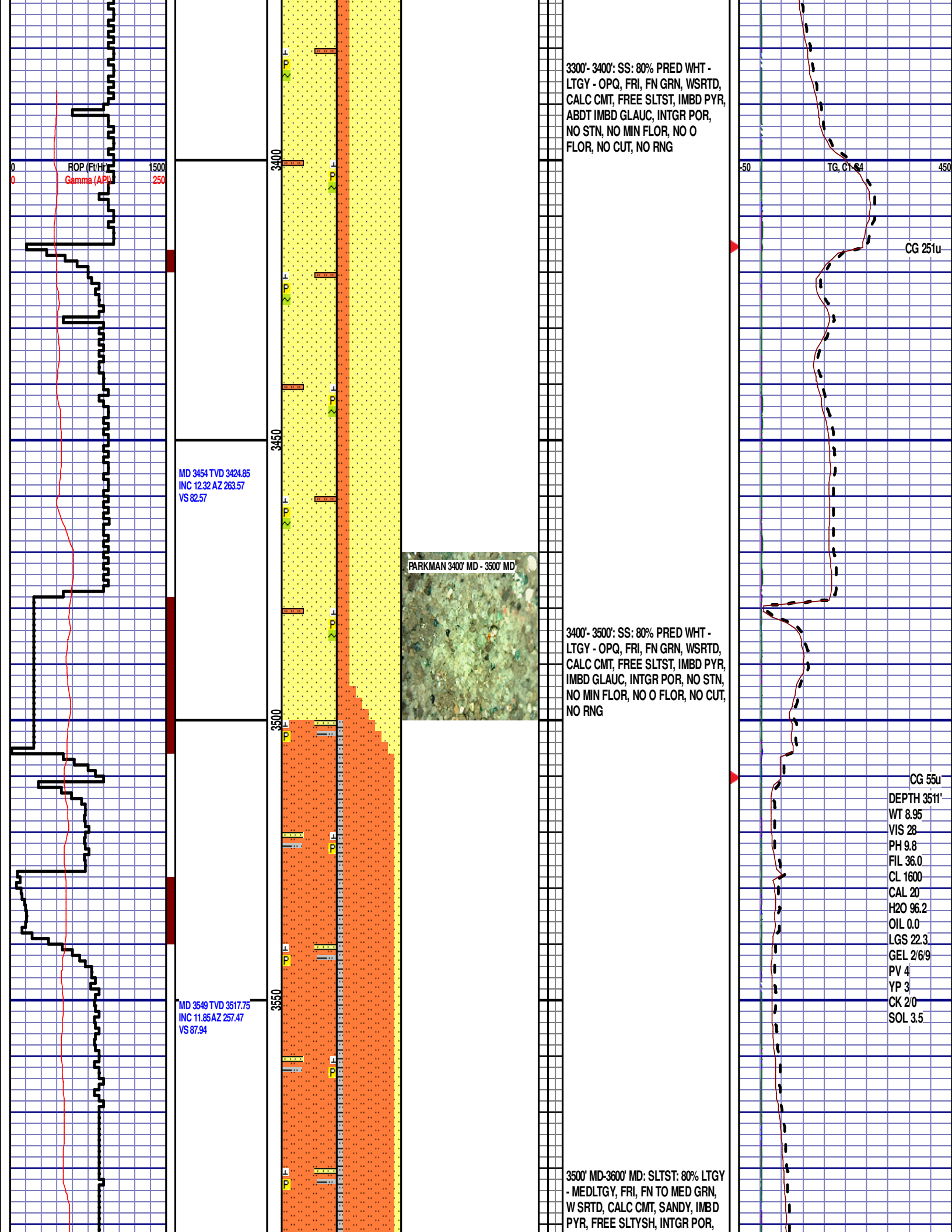
SHAKER FLOW RE-ESTABLISHED

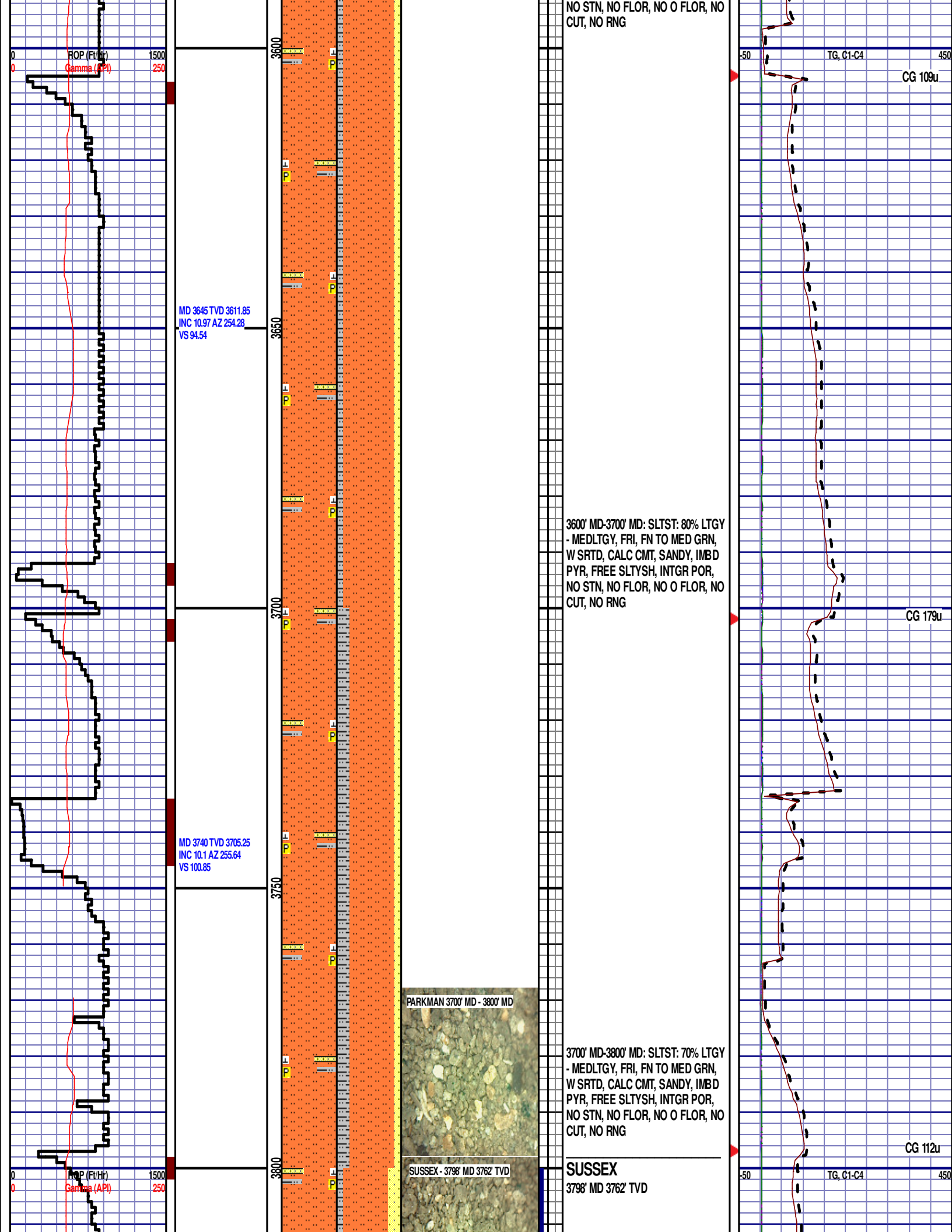
3300

3350

MD 3359 TVD 3331.94
INC 11.78 AZ 263.62
VS 78.21

CG 109u





MD 3835 TVD 3798.83
INC 9.73 AZ 257.45
VS 106.38

MD 3930 TVD 3892.25
INC 11.19 AZ 261.82
VS 111.27

MD 4025 TVD 3985.53
INC 10.63 AZ 260.32
VS 115.07

ROP (Ft/Hr)
Gamma (API)

1500
250

3850

3900

3950

4000



3800' MD-3900' MD: SLTST: 70% LTGY
- MEDLTGY, FRI, FN TO MED GRN,
W SRTD, CALC CMT, IMBD PYR,
SANDY, FREE SLTYSH, INTGR POR,
NO STN, NO FLOR, NO O FLOR,
SLOW LZY CUT, DIM YLW RNG

CG 176u

3900' MD-4000' MD: SLTST: 60% LTGY
- MEDLTGY, FRI, FN TO MED GRN,
W SRTD, CALC CMT, IMBD PYR,
SANDY, FREE SLTYSH, INTGR POR,
NO STN, NO FLOR, NO O FLOR,
SLOW LZY CUT, DIM YLW RNG

CG 192u

-50

TG, C1-C4

450

VS 113.57

MD 4120 TVD 4079.02
INC 9.85 AZ 259.72
VS 120.69

MD 4215 TVD 4172.58
INC 10.12 AZ 266.99
VS 124.36

ROP (Ft/Hr)
Gamma (API)

1500
250

4050

4100

4150

4200

4250

SUSSEX 4000' MD - 4100' MD



4000' MD-4100' MD: SLTST: 50% LTGY
- MEDLTGY, FRI, FN TO MED GRN,
W SRTD, CALC CMT, IMBD PYR,
SANDY, FREE SLTYSH, INTGR POR,
NO STN, NO FLOR, NO O FLOR,
SLOW LZY CUT, DIM YLW RNG

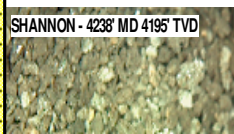
CG 153u

4100' MD-4200' MD: SLTST: 70% LTGY
- MEDLTGY, FRI, FN TO MED GRN,
W SRTD, CALC CMT, IMBD PYR,
SANDY, FREE SLTYSH, INTGR POR,
NO STN, NO FLOR, NO O FLOR,
SLOW LZY CUT, DIM YLW RNG

CG 200u

TG, C1-C4

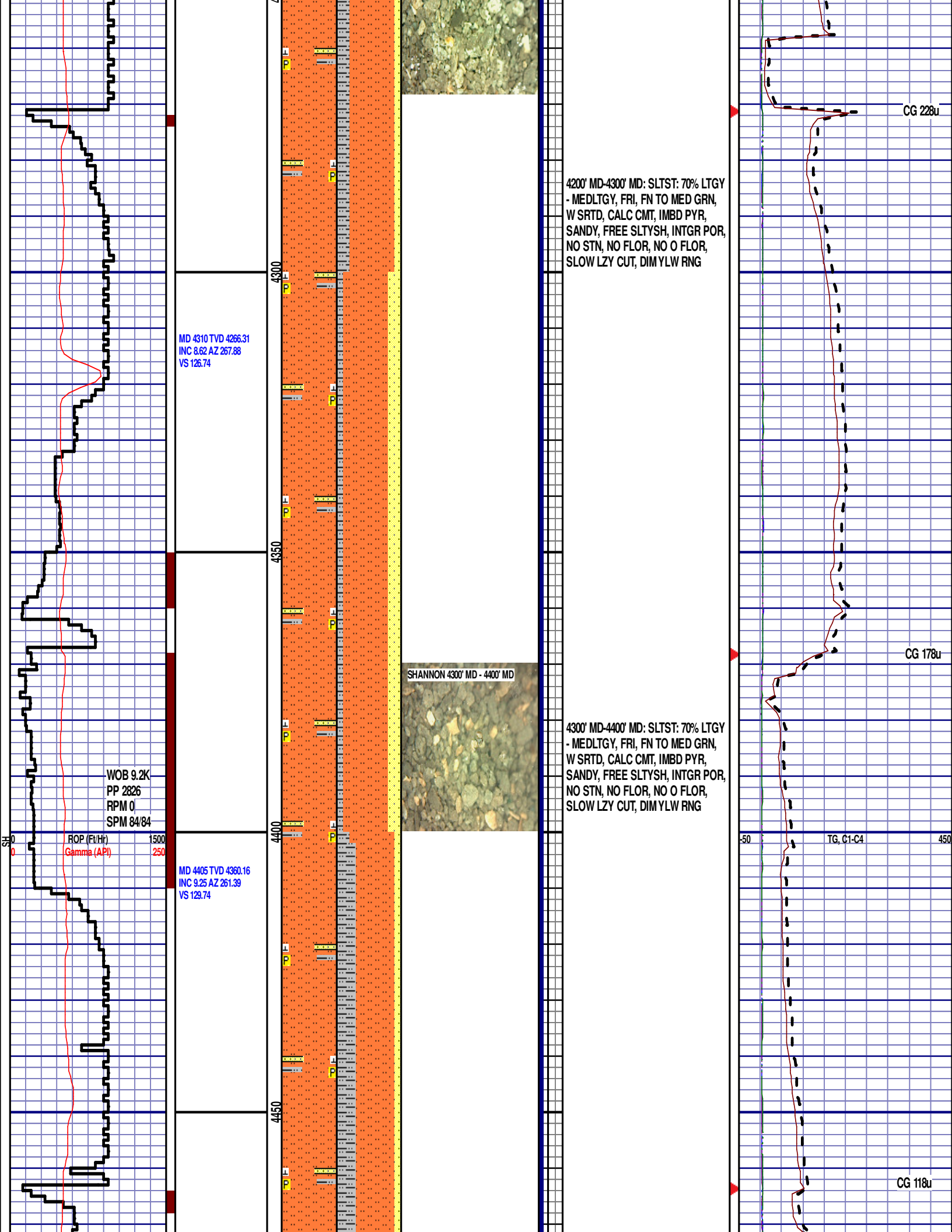
SHANNON - 4238' MD 4195' TVD

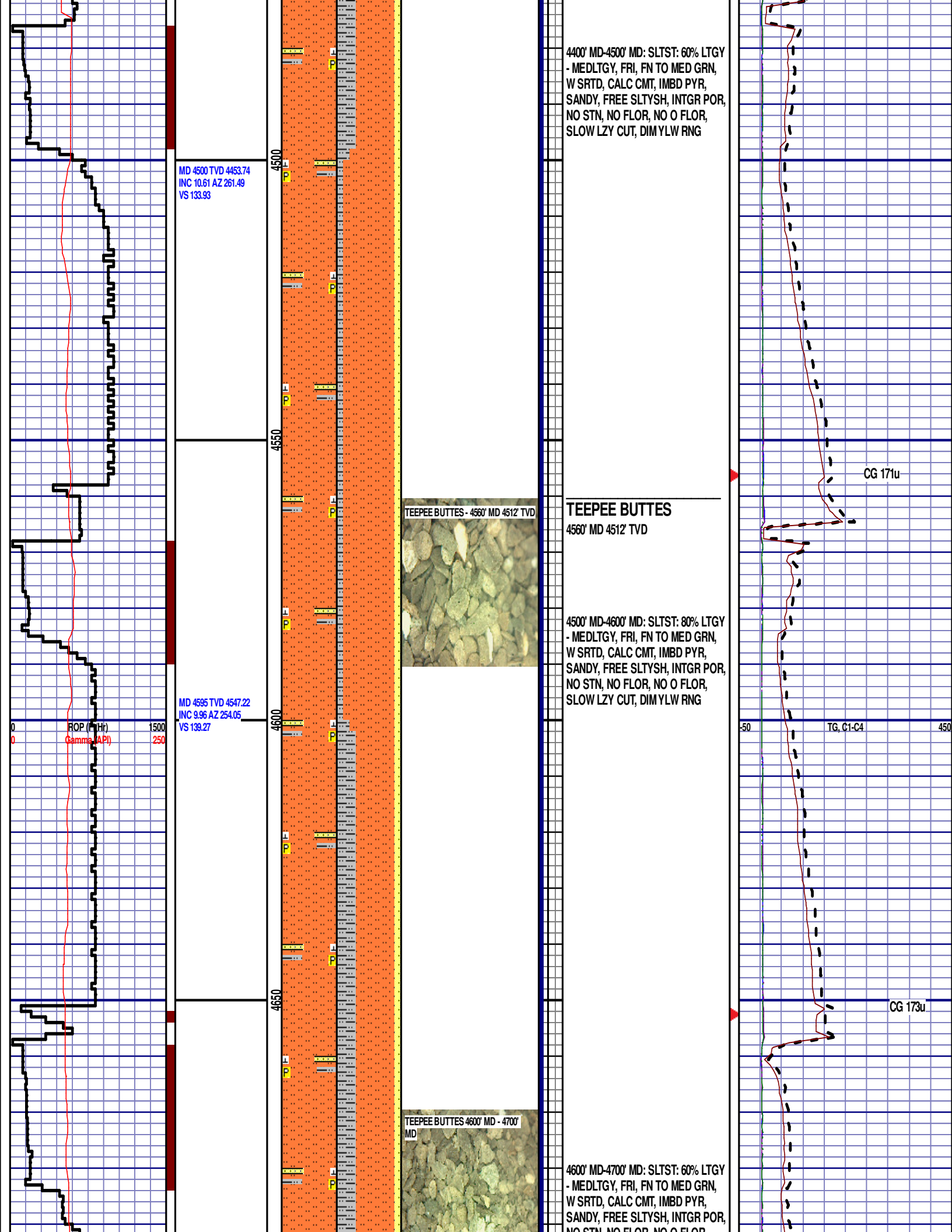


SHANNON
4238' MD 4195' TVD

-50

450





MD 4691 TVD 4641.51
INC 11.64 AZ 257.65
VS 145.51

MD 4786 TVD 4734.42
INC 12.47 AZ 251.4
VS 152.88

MD 4881 TVD 4827.34
INC 11.53 AZ 247.9
VS 161.7

ROP (ft/Hr)
Gamma (API)

1500
250

4700
4750
4800
4850
4900

NO STN, NO FLOR, NO O FLOR,
SLOW LZV CUT, DIM YLW RNG

4700' MD-4800' MD: SLTST: 50% LTGY
- MEDLTGY, FRI, FN TO MED GRN,
W SRTD, CALC CMT, IMBD PYR,
SANDY, FREE SLTYSH, INTGR POR,
NO STN, NO FLOR, NO O FLOR,
SLOW LZV CUT, DIM YLW RNG

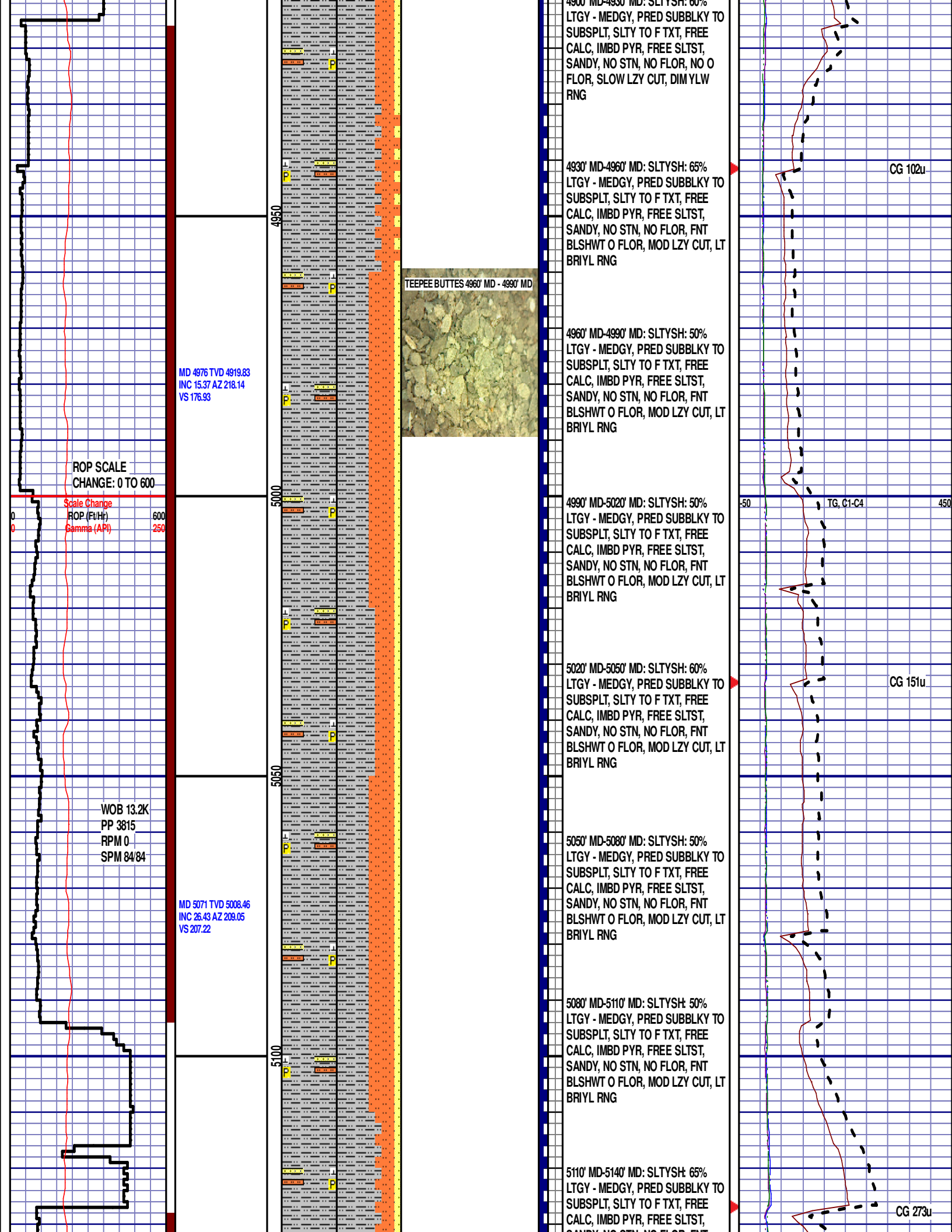
4800' MD-4900' MD: SLTYSH: 60%
LTGY - MEDGY, PRED SUBBLKY TO
SUBSPLT, SLTY TO F TXT, FREE
CALC, IMBD PYR, FREE SLTST,
SANDY, NO STN, NO FLOR, NO O
FLOR, SLOW LZV CUT, DIM YLW
RNG

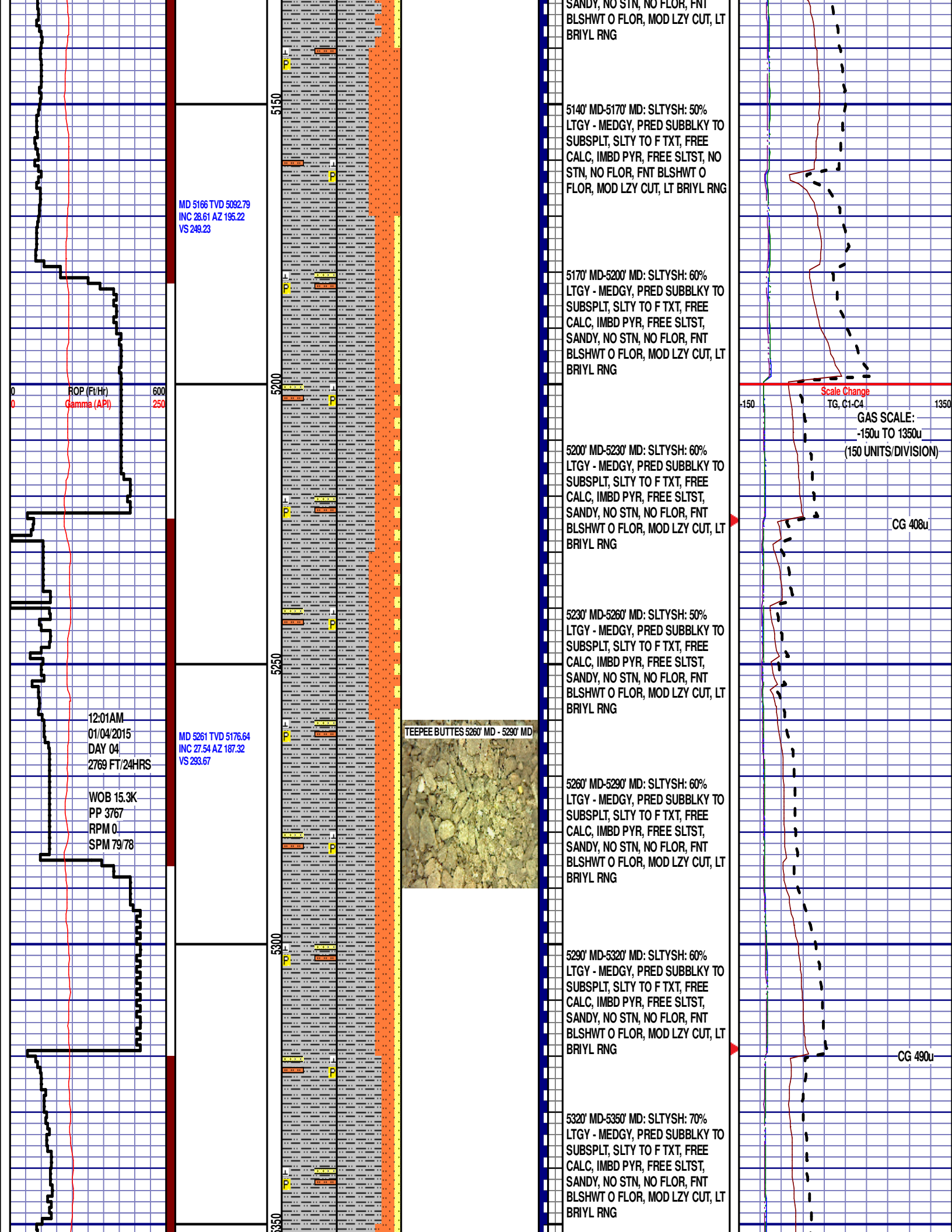
SWITCHING TO 30' SAMPLES

CG 157u

TG, C1-C4

CG 227u





MD 5357 TVD 5259.55
INC 32.95 AZ 184.05
VS 341.99

MD 5405 TVD 5298.86
INC 37.09 AZ 179.36
VS 369.41

MD 5451 TVD 5334.61
INC 40.9 AZ 175.85
VS 398.01

MD 5546 TVD 5399.48
INC 52.8 AZ 179.69
VS 466.44

ROP (Ft/Hr)
Gamma (API)

Scale Change
ROP (Ft/Hr)
Gamma (API)

GAMMA SCALE: 0
TO 350
ORIGINAL DATA
AS RECEIVED

WOB 14.2K
PP 3970
RPM 0
SPM 79/78

5350' MD-5380' MD: SLTYSH: 60%
LTGY - MEDGY, PRED SUBBLKY TO
SUBSPLT, SLTY TO F TXT, FREE
CALC, IMBD PYR, FREE SLTST,
SANDY, NO STN, NO FLOR, FNT
BLSHWT O FLOR, MOD LZ Y CUT, LT
BRIYL RNG

5380' MD-5410' MD: SLTYSH: 65%
LTGY - MEDGY, PRED SUBBLKY TO
SUBSPLT, SLTY TO F TXT, FREE
CALC, IMBD PYR, FREE SLTST,
SANDY, NO STN, NO FLOR, FNT
BLSHWT O FLOR, MOD LZ Y CUT, LT
BRIYL RNG

5410' MD-5440' MD: SLTYSH: 60%
LTGY - MEDGY, PRED SUBBLKY TO
SUBSPLT, SLTY TO F TXT, FREE
CALC, IMBD PYR, FREE SLTST,
SANDY, NO STN, NO FLOR, FNT
BLSHWT O FLOR, MOD LZ Y CUT, LT
BRIYL RNG

5440' MD-5470' MD: SLTYSH: 70%
LTGY - MEDGY, PRED SUBBLKY TO
SUBSPLT, SLTY TO F TXT, FREE
CALC, IMBD PYR, FREE SLTST, NO
STN, NO FLOR, FNT BLSHWT O
FLOR, MOD LZ Y CUT, LT BRIYL RNG

5470' MD-5500' MD: SLTYSH: 60%
LTGY - MEDGY, PRED SUBBLKY TO
SUBSPLT, SLTY TO F TXT, FREE
CALC, IMBD PYR, FREE SLTST, NO
STN, NO FLOR, FNT BLSHWT O
FLOR, MOD LZ Y CUT, LT BRIYL RNG

5500' MD-5530' MD: SLTYSH: 60%
LTGY - MEDGY, PRED SUBBLKY TO
SUBSPLT, SLTY TO F TXT, FREE
CALC, IMBD PYR, FREE SLTST, NO
STN, NO FLOR, FNT BLSHWT O
FLOR, MOD LZ Y CUT, LT BRIYL RNG

5530' MD-5560' MD: SLTYSH: 65%
LTGY - MEDGY, PRED SUBBLKY TO
SUBSPLT, SLTY TO F TXT, FREE
CALC, IMBD PYR, FREE SLTST, NO
STN, NO FLOR, FNT BLSHWT O
FLOR, MOD LZ Y CUT, LT BRIYL RNG

TEEPEE BUTTES 5560' MD - 5590' MD



150 TG, C1-C4 1350

CG 305u

CG 221u

DEPTH 5509'
WT 10.70
VIS 42
PH 9.6
FIL 6.8
CL 1900
CAL 0
H2O 89.0
OIL 0.3
LGS 25.3
GEL 5/45/72
PV 15
YP 15
CK 1/0
SOL 10.5

Scale Change
TG, C1-C4

GAS SCALE: -350u
TO 3150u

(350 UNITS/DIVISION)

