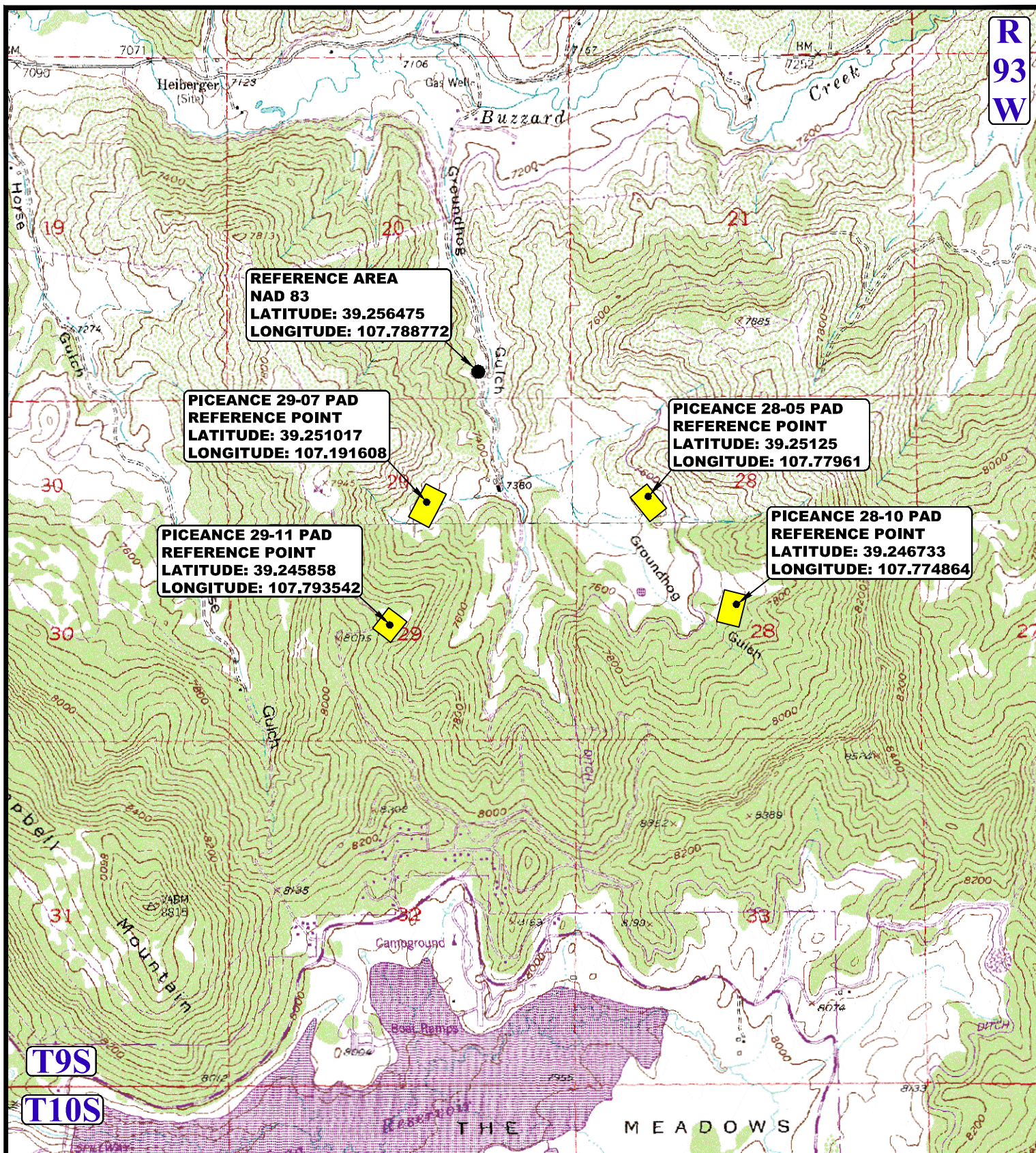


R
93
W



LEGEND:

PICEANCE ENERGY, LLC

REFERENCE AREA FOR WELLS IN SEC. 28 & 29
SECTION 20, T9S, R93W, 6th P.M.

SW 1/4 SE 1/4

MESA COUNTY, COLORADO



UELS, LLC

Corporate Office * 85 South 200 East
Vernal, UT 84078 * (435) 789-1017

DRAWN BY: B.D.

DATE DRAWN: 04-09-15

SCALE: 1" = 2000'

REVISED: 04-22-15 B.D.

REFERENCE AREA MAP

REF TOPO