

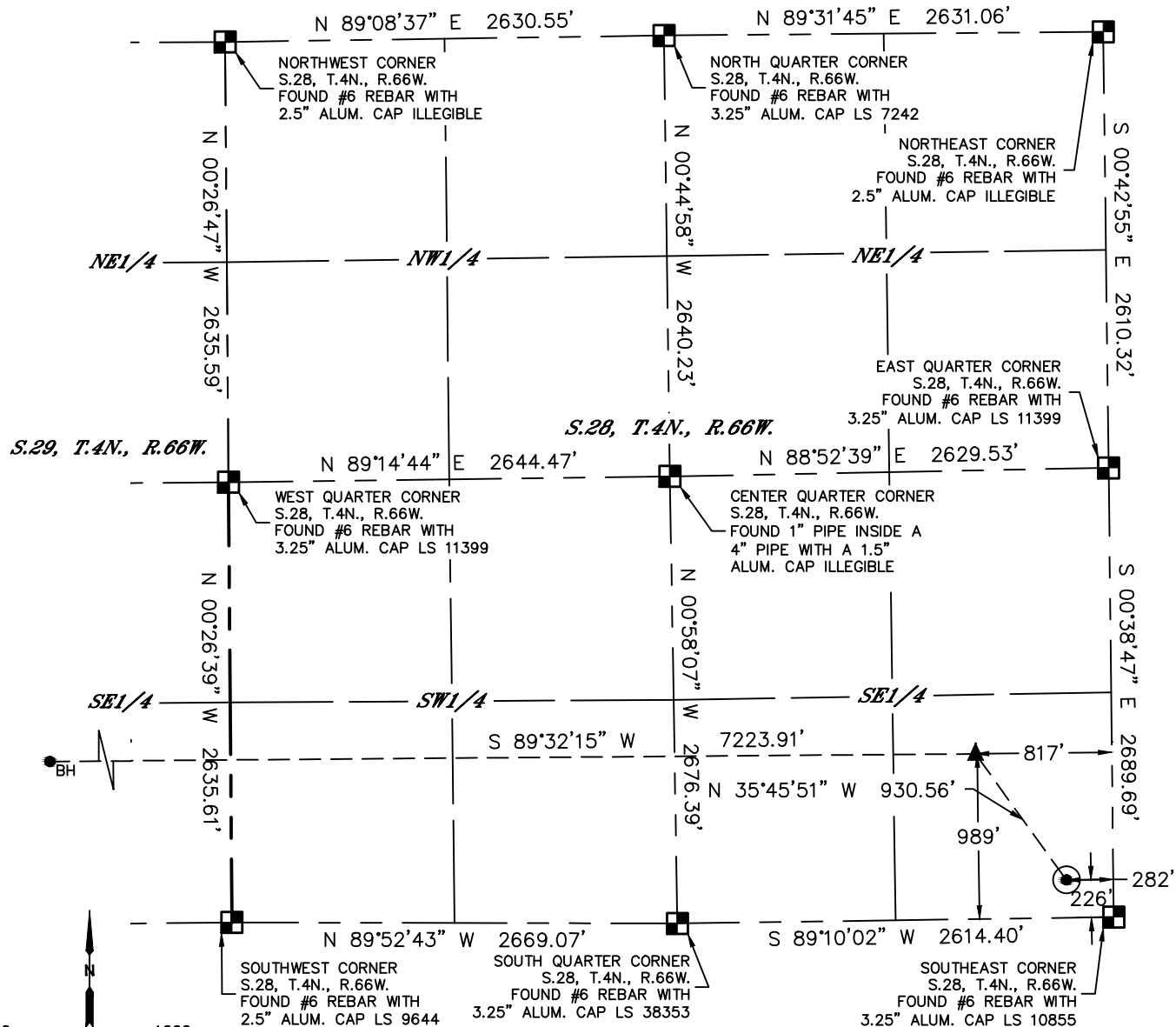


Lat40°, Inc. 6250 W. 10th Street, Unit 2, Greeley, CO 970-515-5294

WELL LOCATION CERTIFICATE

HUNT FEDERAL 28X-234

SECTION: 28
TOWNSHIP: 4N
RANGE: 66W
6TH. P.M.
WELD COUNTY, CO



0 1000
1"=1000'

CLIENT: PDC ENGERGY				LANDMAN: MAC NEUMANN			
INSTRUMENT OPERATOR: ADAM BEAUPREZ				SURVEY DATE: 10/16/2014		SURFACE USE: CROP LAND	
SHL FOOTAGE	SHL LAT °	SHL LONG °	SHL PDOP	SHL ELEV (FT.)	SHL	SHL S-T-R	
226	FSL	282	FEL	40.27596	-104.77399	2.0	4762 SESE 28-4-66

BHL FOOTAGE	BHL LAT °	BHL LONG °	BHL S-T-R	EP LAT °	EP LONG °	EP S-T-R
981	FSL	2550	FWL	40.27805	-104.80180	29-4-66 40.27805 -104.77592 28-4-66

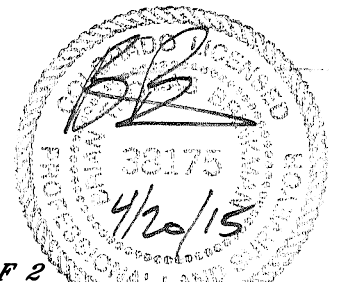
NEAREST CULTURAL ITEMS	
BUILDING	±427' SW
BUILDING UNIT	±496' SW
HIGH OCCUPANCY BUILDING UNIT	±3208' NW
DESIGNATED OUTSIDE ACTIVITY AREA	5280'+
PUBLIC ROAD (COUNTY ROAD 40)	±213' S
ABOVE GROUND UTILITY	±233' E
RAILROAD	±1844' NW
PROPERTY LINE	±226' S

NOTE:

- 1) Bearings shown are Grid Bearings of the Colorado State Plane Coordinate System, North Zone, North American Datum 1983. The lineal dimensions as contained herein are based upon the "U.S. Survey Foot."
- 2) Distances to section lines measured at 90 degrees from said section lines.
- 3) Ground elevations are based on an observed GPS elevation (NAVD 1988 DATUM).
- 4) Latitude and Longitude shown are (NAD 83 DATUM).
- 5) IMPROVEMENTS: See LOCATION DRAWING for all visible improvements within 500' of disturbed area.

LEGEND

- = ALIQUOT MONUMENT AS DESCRIBED
- = CALCULATED POSITION
- = SURFACE HOLE LOCATION (SHL)
- ▲ = ENTRY POINT LOCATION (EP)
- BH = BOTTOM HOLE LOCATION (BHL)
- ⊙ = EXISTING WELL
- ⊙ = ABANDONED WELL



SHEET 1 OF 2

Brian T. Brinkman—On behalf of Lat40°, Inc.
Colorado Licensed Professional Land Surveyor No. 38175
DATE: 4/20/2014
PROJECT#: 2013114

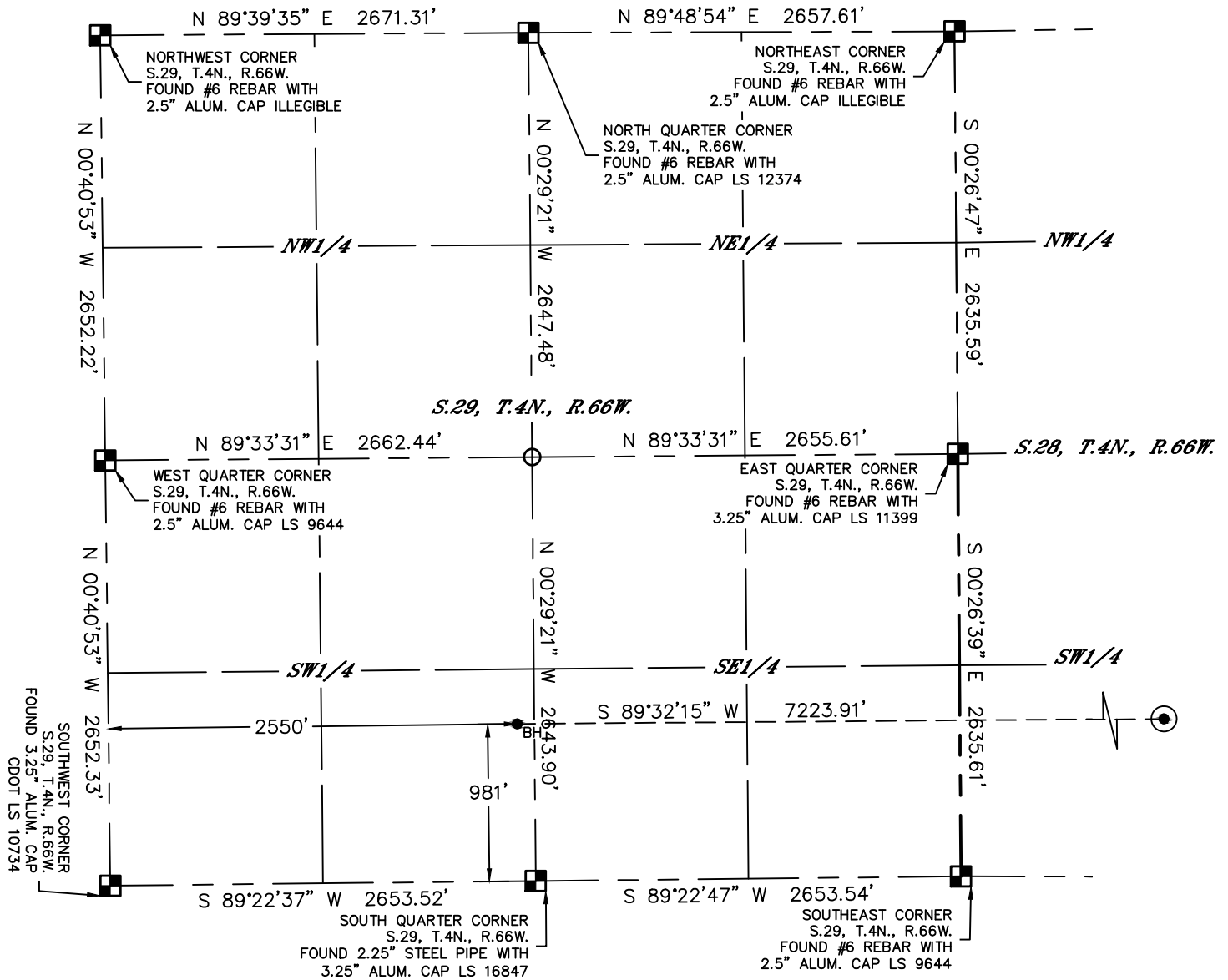


Lat40°, Inc. 6250 W. 10th Street, Unit 2, Greeley, CO 970-515-5294

WELL LOCATION CERTIFICATE

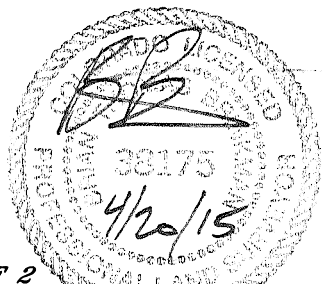
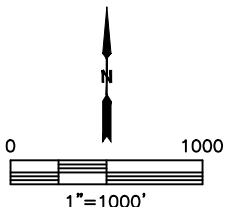
HUNT FEDERAL 28X-234

SECTION: 28
TOWNSHIP: 4N
RANGE: 66W
6TH. P.M.
WELD COUNTY, CO



LEGEND

- = ALIQUOT MONUMENT AS DESCRIBED
- = CALCULATED POSITION
- ⊙ = SURFACE HOLE LOCATION (SHL)
- ▲ = ENTRY POINT LOCATION (EP)
- = BOTTOM HOLE LOCATION (BHL)
- ⊕ = EXISTING WELL
- ⊖ = ABANDONED WELL



SHEET 2 OF 2

Brian T. Brinkman—On behalf of Lat40°, Inc.
Colorado Licensed Professional DATE: 4/20/2014
Land Surveyor No. 38175 PROJECT#: 2013114

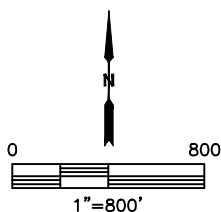
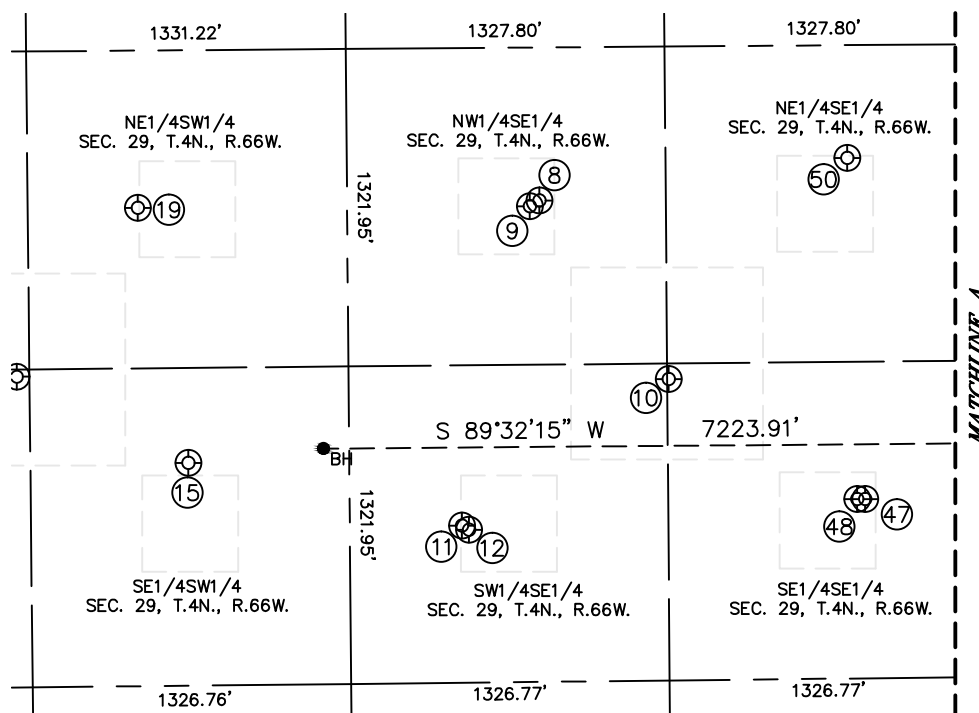
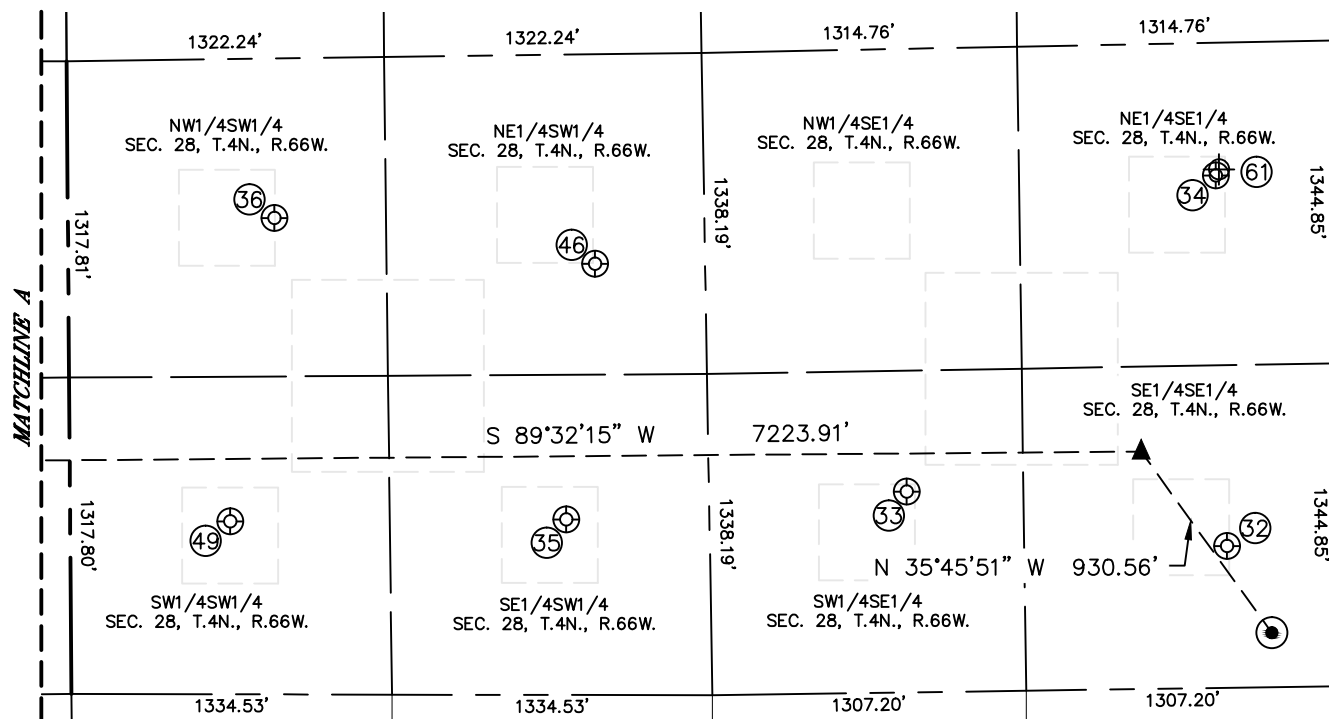


Lat40°, Inc. 6250 W. 10th Street, Unit 2, Greeley, CO 970-515-5294

SITE SKETCH

HUNT FEDERAL 28X-234

SECTION: 28
TOWNSHIP: 4N
RANGE: 66W
6TH. P.M.
WELD COUNTY, CO





Lat40°, Inc. 6250 W. 10th Street, Unit 2, Greeley, CO 970-515-5294

SITE SKETCH

HUNT FEDERAL 28X-234

SECTION: 28
TOWNSHIP: 4N
RANGE: 66W
6TH. P.M.
WELD COUNTY, CO

WELL NO.	WELL NAME	SHL FOOTAGE				SHL LAT°	SHL LONG°	PDOP	ELEV (FT.)	1/4/1/4
8	MCLEOD 8	2004	FSL	1854	FEL	40.28086	-104.79855	2.0	4770	NWSE
9	MCLEOD 29-1	1981	FSL	1894	FEL	40.28080	-104.79869	2.0	4771	NWSE
10	MCLEOD 6	1255	FSL	1321	FEL	40.27881	-104.79664	2.1	4769	SESE
11	MCLEOD 29-2	653	FSL	2187	FEL	40.27715	-104.79974	2.1	4773	SWSE
12	MCLEOD 29-29X	636	FSL	2158	FEL	40.27711	-104.79964	3.3	4772	SWSE
15	WIEDEMAN 29-3	928	FSL	1986	FWL	40.27790	-104.80382	2.1	4765	SESW
19	WIEDEMAN 29-1	1991	FSL	1789	FWL	40.28081	-104.80455	2.3	4763	NESW
32	LORENZ 44-28	590	FSL	464	FEL	40.27696	-104.77465	1.9	4761	SESE
33	LORENZ 34-28	836	FSL	1796	FEL	40.27761	-104.77943	1.8	4756	SWSE
34	MELISSA 1	2134	FSL	494	FEL	40.28120	-104.77477	2.3	4748	NESE
35	KEISER 14-28	731	FSL	2065	FWL	40.27732	-104.78451	2.1	4753	SESW
36	DANNY B 12-28	1984	FSL	860	FWL	40.28080	-104.78883	1.8	4759	NWSW
46	RANDALL 11-28	1795	FSL	2194	FWL	40.28024	-104.78405	1.9	4754	NESW
47	MCLEOD 2	746	FSL	507	FEL	40.27742	-104.79373	2.0	4765	SESE
48	MCLEOD 2-29B	746	FSL	541	FEL	40.27742	-104.79385	1.7	4765	SESE
49	KEISER 13-28	720	FSL	667	FWL	40.27733	-104.78952	1.7	4761	SWSW
50	MCLEOD 29-41	2167	FSL	570	FEL	40.28132	-104.79395	1.8	4766	NESE
61	LORENZ 43-28	2160	FSL	480	FEL	40.28115	-104.77474	N/A	4744	NESE

NOTE: THE ABANDONED WELL DATA SHOWN IN RED ABOVE WAS OBTAINED FROM COGCC SCOUT CARDS.

SHEET 2 OF 2

DATE: 11/10/2014
PROJECT#: 2013114