



FILE NO: CH093853	COMPANY WPX ENERGY
API NO: 05045225040000	WELL Wpx GM 542-28
	FIELD GRAND VALLEY
	COUNTY GARFIELD
	STATE COLORADO

Version 28 GS 96W GM 323-28 PAD H&P 318	LOCATION: SHL: 1511' FSL & 2353' FWL BHL: 2555' FNL & 1340' FEL (SENE) SEC 28 TWP 6S RGE 96W	OTHER SERVICES BOND LOG
--	---	----------------------------

PERMANENT DATUM LOG MEASURED FROM DRILL. MEAS. FROM	GL KB KB GL	ELEVATION 5476 FT 24 FT ABOVE P.D. 5476 FT
---	----------------------	--

DATE	3-Jan-2015
RUN	1
TRIP	1
SERVICE ORDER	US093853
DEPTH DRILLER	7340 FT
DEPTH LOGGER	7276 FT
BOTTOM LOGGED INTERVAL	7266 FT
TOP LOGGED INTERVAL	3943 FT
TIME STARTED	1130
TIME FINISHED	1630
OPERATOR RIG TIME	5 HOURS
TYPE OF FLUID IN HOLE	WATER
FLUID DENSITY	NA
FLUID SALINITY	NA
FLUID LEVEL	58 FT
LOGGED CEMENT TOP	NA
WELLHEAD PRESSURE	0 PSI
MAXIMUM HOLE DEVIATION	NA
NOMINAL LOGGING SPEED	10 FMIN
MAX. RECORDED TEMP.	231 DEGF
REFERENCE LOG	BAKER HUGHES BOND LOG
REFERENCE LOG DATE	3-Jan-2015
EQUIP. NO.	4271
LOCATION	GRAND JCT.
RECORDED BY	FLOYD RENEAU
WITNESSED BY	JEFF BRADY

IN MAKING INTERPRETATIONS OF LOGS OUR EMPLOYEES WILL GIVE THE CUSTOMER THE BENEFIT OF THEIR BEST JUDGEMENT. BUT SINCE ALL INTERPRETATIONS ARE OPINIONS BASED ON INFERENCES FROM ELECTRICAL OR OTHER MEASUREMENTS, WE CANNOT, AND WE DO NOT GUARANTEE THE ACCURACY OR CORRECTNESS OF ANY INTERPRETATION. WE SHALL NOT BE LIABLE OR RESPONSIBLE FOR ANY LOSS, COST, DAMAGES, OR EXPENSES WHATSOEVER INCURRED OR SUSTAINED BY THE CUSTOMER RESULTING FROM ANY INTERPRETATION MADE BY ANY OF OUR EMPLOYEES.

### BOREHOLE RECORD

BIT SIZE	FROM	TO
13.5 IN	24 FT	1419 FT
8.75 IN	1419 FT	7340 FT

### CASING RECORD

SIZE	WEIGHT	GRADE	FROM	TO
9.625 IN			24 FT	1419 FT
4.5 IN	11.6 LB/F	I-80	24 FT	7340 FT

### REMARKS

RUN 1 TRIP 1: All data on this log is shifted and depth matched using the Gamma Ray curve to the Baker Hughes bond log dated 1/3/2015 at the client's request.

The amount of linear shift is -1 feet.

Logged in PNC-3D mode.

BHT = 231 degF

SJ = 3470' - 3499'

Thanks you for choosing Baker-Hughes.

## EQUIPMENT DATA

RUN	TRIP	TOOL	SERIES NO.	SERIAL NO.	POSITION
1	1	PCM	8250EA	10397894	FREE
1	1	TEL/CCL	8248ED	10387150	FREE
1	1	GR	2812LA	10274382	FREE
1	1	RPM	8281EA	10423671	FREE
1	1	RPM	8283PA	10585555	FREE
1	1	RPM	8281FA	10460082	FREE
1	1	TEMP	8255XA	Z120516	FREE

## MAIN SECTION PNC-3D MODE

ECLIPS 6.2wu1 PC-ECLIPS General Release Rel 6.2w Update 1 Fri Apr 25 10:54:53 Central Daylight Time 2014  
Updates: 46 Patches: 5

Plotted: Sat Jan 03 16:29:32 2015

## PARAMETER AND FILTER SUMMARY REPORT

FILE: C:\dat1a\093853\354h03.prm  
LOGGING MODE: DEPTH DIRECTION: UP  
TOP DEPTH: 3919.000 ft BOTTOM DEPTH: 7281.023 ft

## SYMMETRIC FILTER

MEASUREMENT TYPE	PARAMETER	VALUE	UNITS	INTERVAL (ft)
GR	FILTER ()	medium (1)		TOP BOTTOM

## RPM PROCESSING

MEASUREMENT TYPE	PARAMETER	VALUE	UNITS	INTERVAL (ft)
PNC Parameters	BOREHOLE CONTENTS	FLUID		TOP BOTTOM
	OPEN/CASED HOLE	CASED HOLE		" "
	BOREHOLE SIZE	8.50	in	" "
	CASING SIZE	4.50	in	" "
	MATRIX	SANDSTONE		" "
	CORRECTION BUFFER	11		" "

## CURVE DESCRIPTION REPORT

CURVE NAME	CREATION DATE	CURVE DESCRIPTION
F1:CCL	Jan 3 12:41:15 2015	CASING COLLAR LOCATOR
F1:GR	Jan 3 12:41:15 2015	GAMMA RAY
F1:ISS	Jan 3 12:41:15 2015	INELASTIC SHORT SPACE COUNT RATE
F1:LS	Jan 3 12:41:15 2015	LONG SPACE COUNT RATE
F1:RATO	Jan 3 12:41:15 2015	SHORT/LONG SPACE COUNT RATE RATIO
F1:RICS	Jan 3 12:41:15 2015	SHORT SPACE INELASTIC TO CAPTURE COUNT RATE RATIO (ISS/CSS)
F1:SGFC	Jan 3 12:41:15 2015	CORRECTED FORMATION SIGMA
F1:SS	Jan 3 12:41:15 2015	SHORT SPACE COUNT RATE

## CURVE MEASURE POINT OFFSET

CURVE	OFFSET (ft)	CURVE	OFFSET (ft)	CURVE	OFFSET (ft)	CURVE	OFFSET (ft)
CCL	25.00	ISS	12.75	RATO	12.75	SGFC	12.75
GR	22.75	LS	12.75	RICS	12.75	SS	12.75

Presentation : BHUGHES-06627:C:\dat1a\093853\542\_RPM\_MAIN.fvpdf [5"/100' Scale]  
Plot Interval : 3920 - 7280 Feet

Data File 1 : F1 : BHUGHES-06627:C:\dat1a\093853\542\_RPM\_MAIN.xtf  
Created On : Jan 3 12:41:15 2015  
Company : WPX ENERGY  
Well : WPX CM 542 22

Well : WPA GM 342-28  
Field : GRAND VALLEY  
File Interval : 20.5 - 7280 Feet  
OCT : n354h

GR BACKUP

ISS [iss]

0 1E+006

(1)

GAMMA RAY [gr]

0 150

(gAPI)

FEET

CCL  
(mV)

4000

LS [ls]

0 29000

(1)

SS [ss]

0 290000

(1)

RATO [rato]

17 0

(1)

RICS [rics]

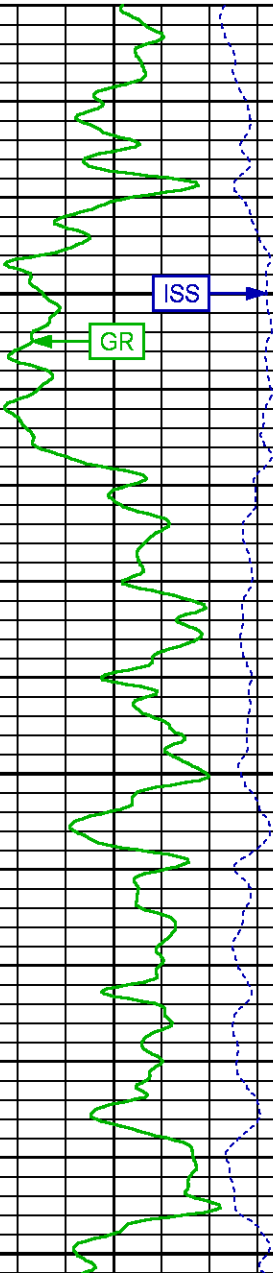
39 9

(1)

SGFC [sgfc]

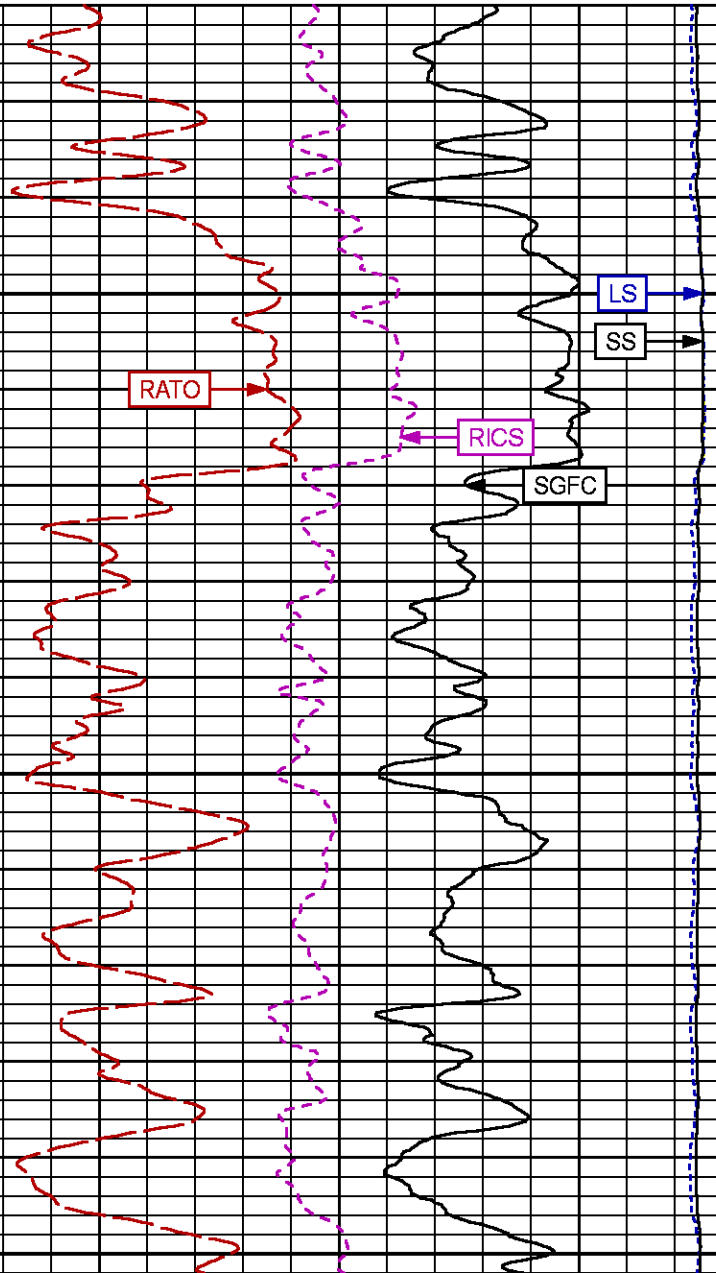
60 0

(1)



ISS

GR



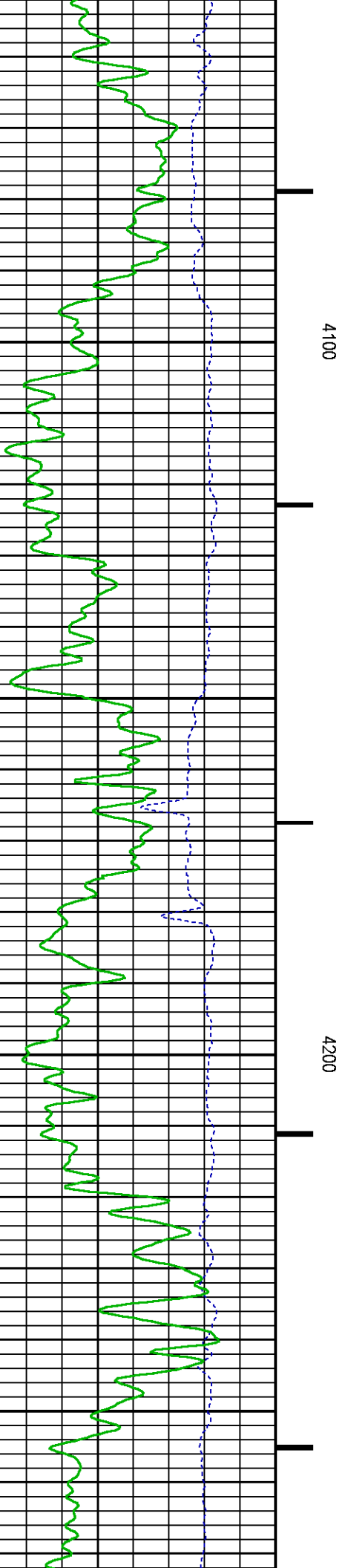
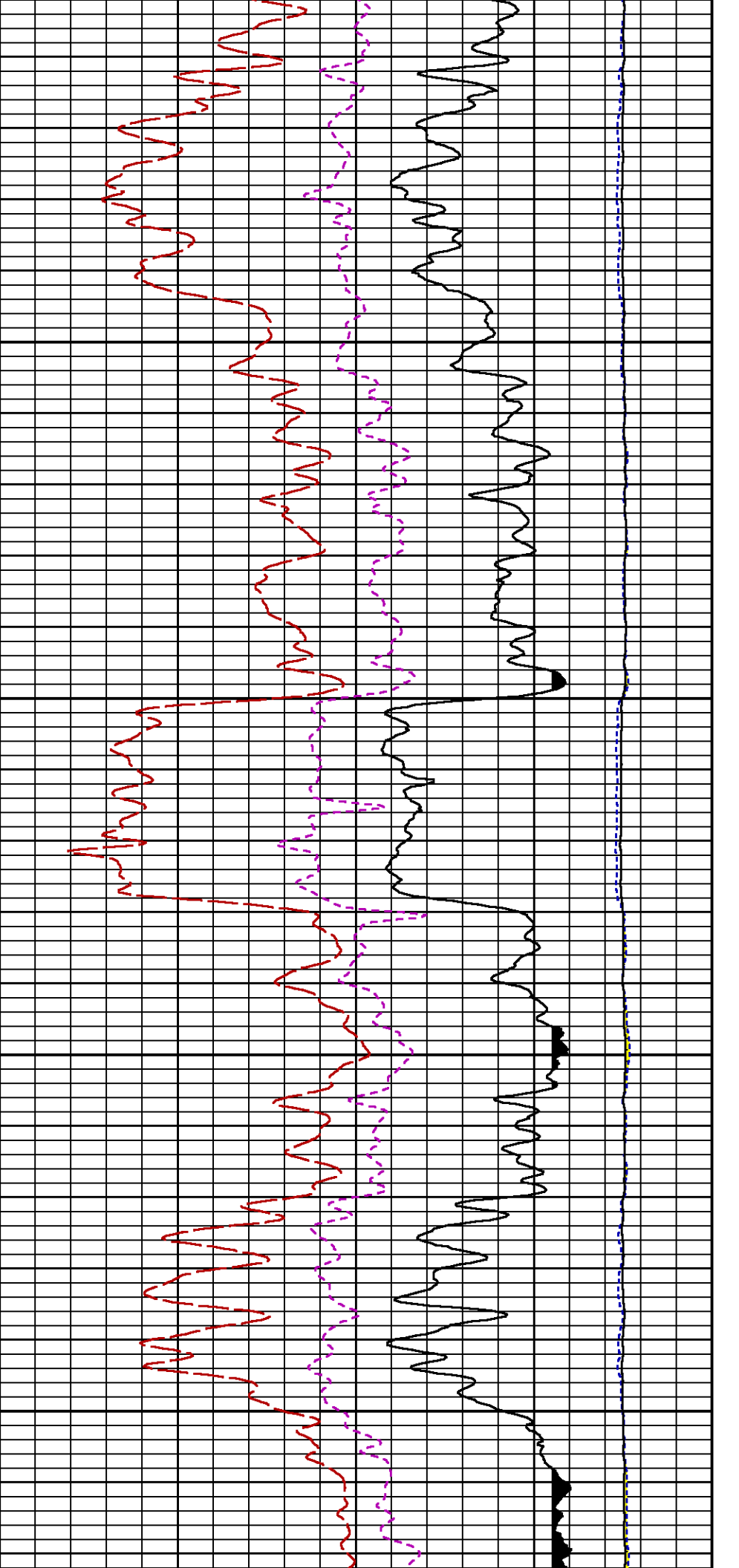
RATO

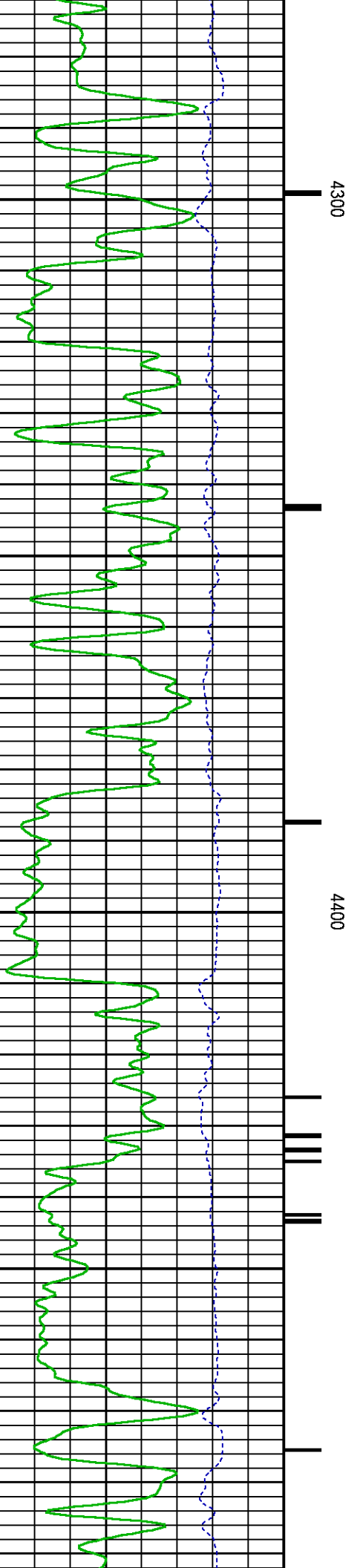
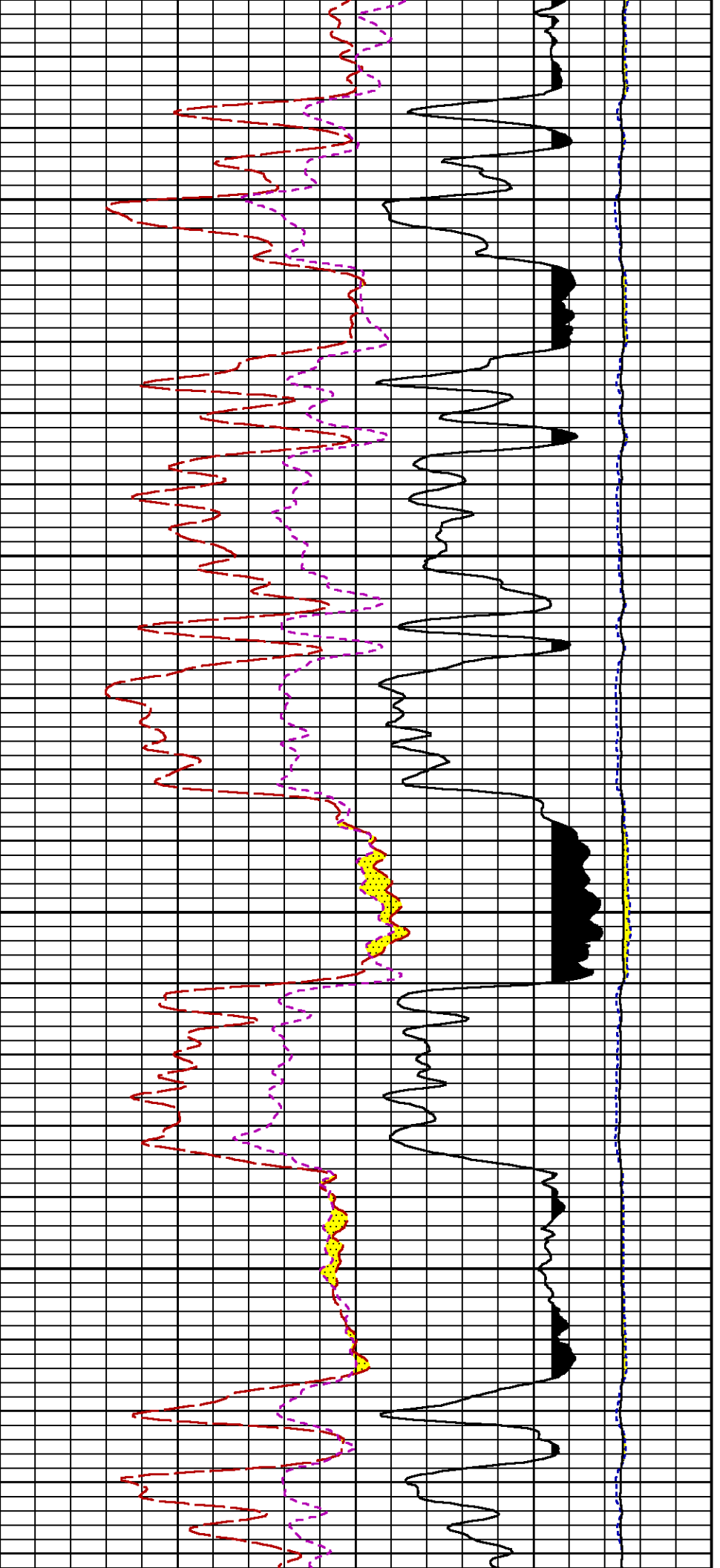
RICS

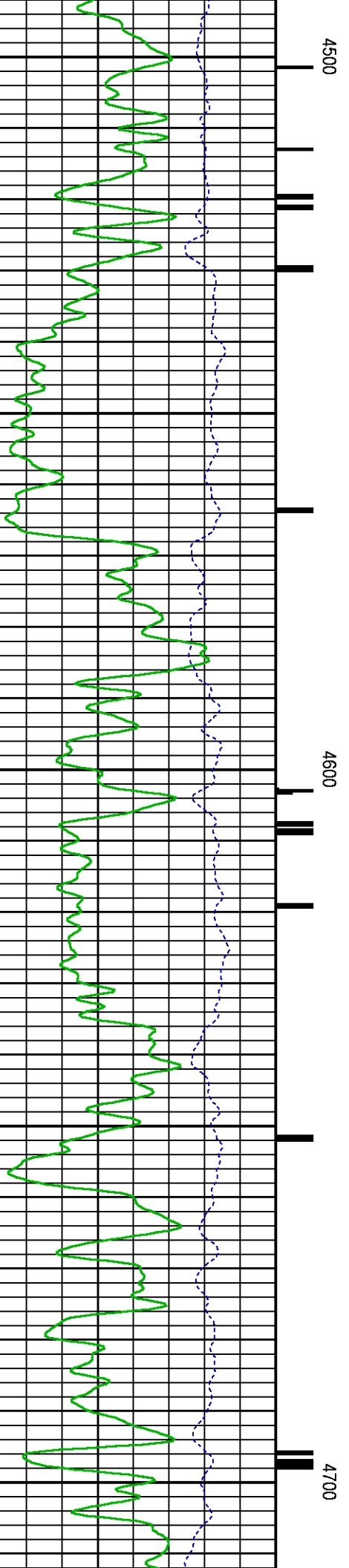
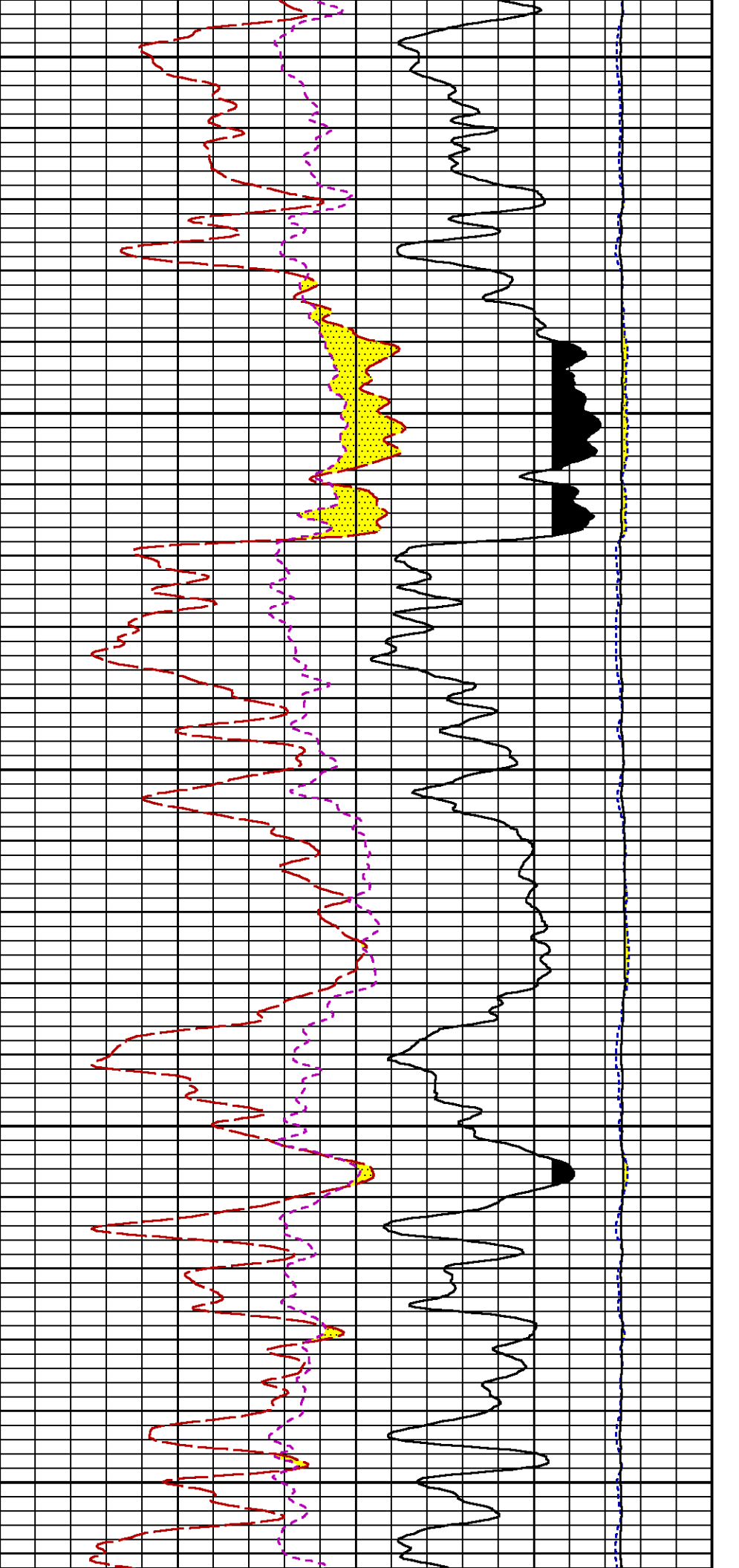
SGFC

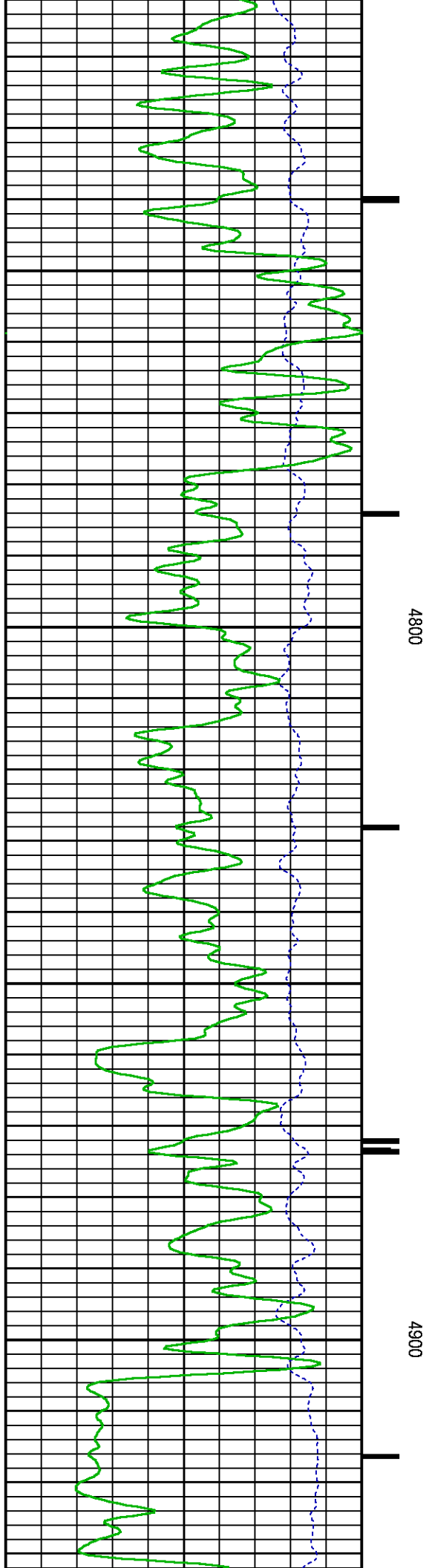
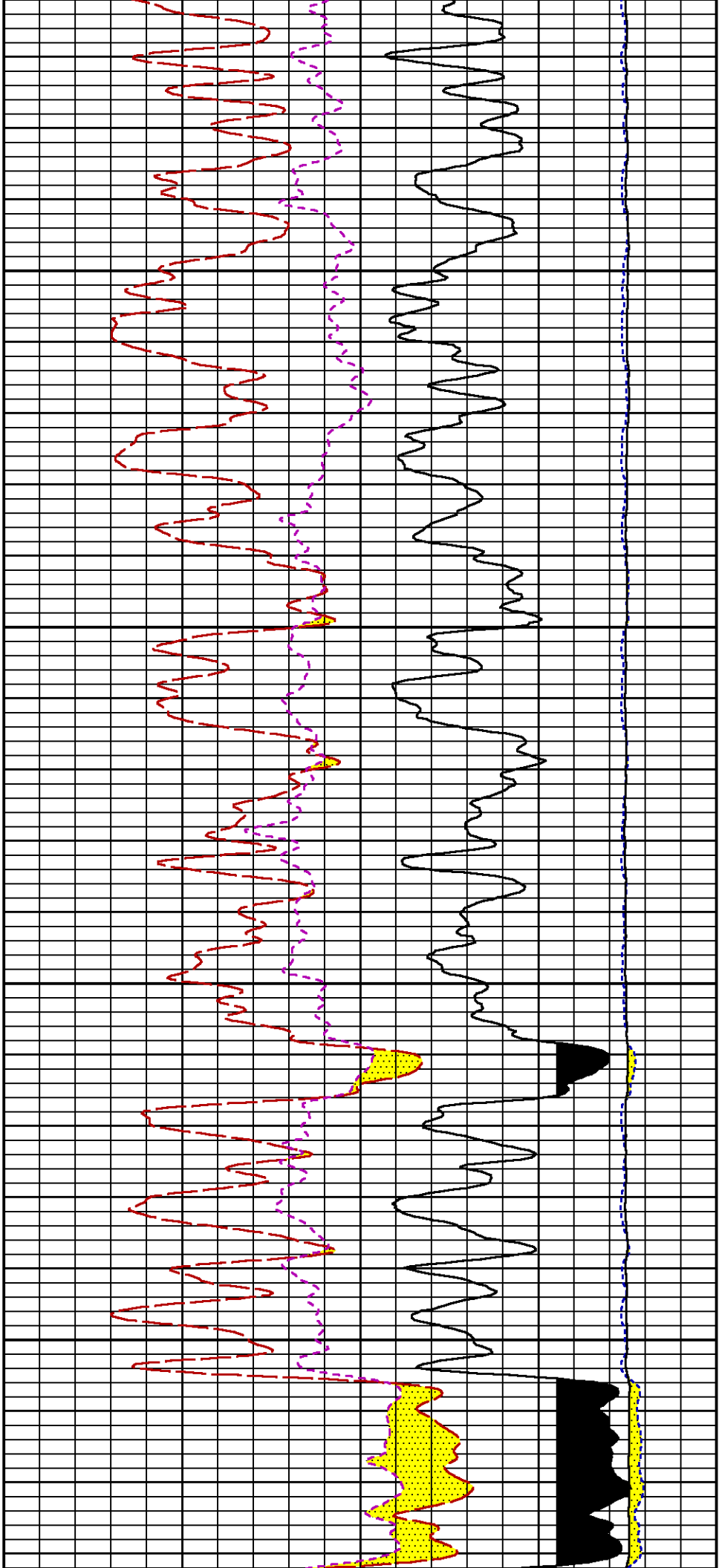
LS

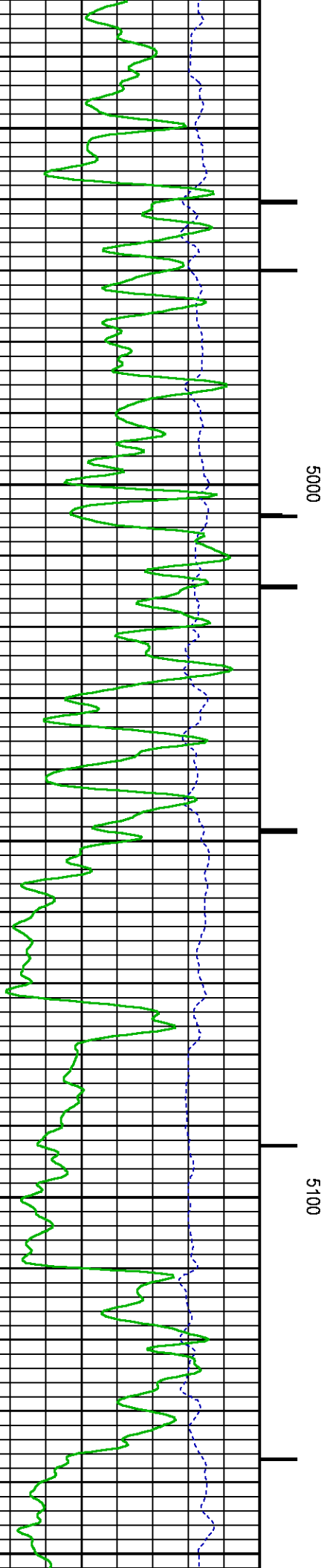
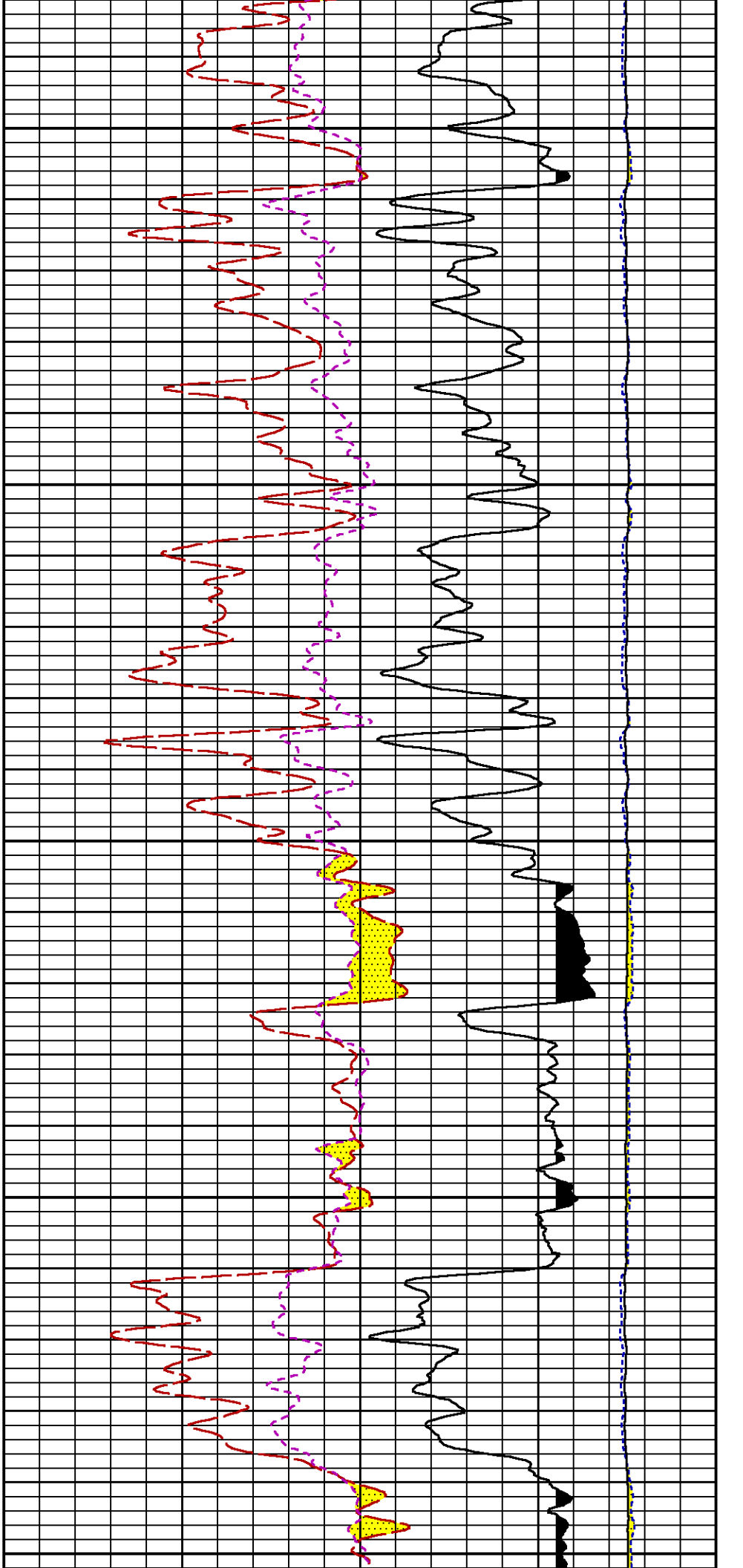
SS



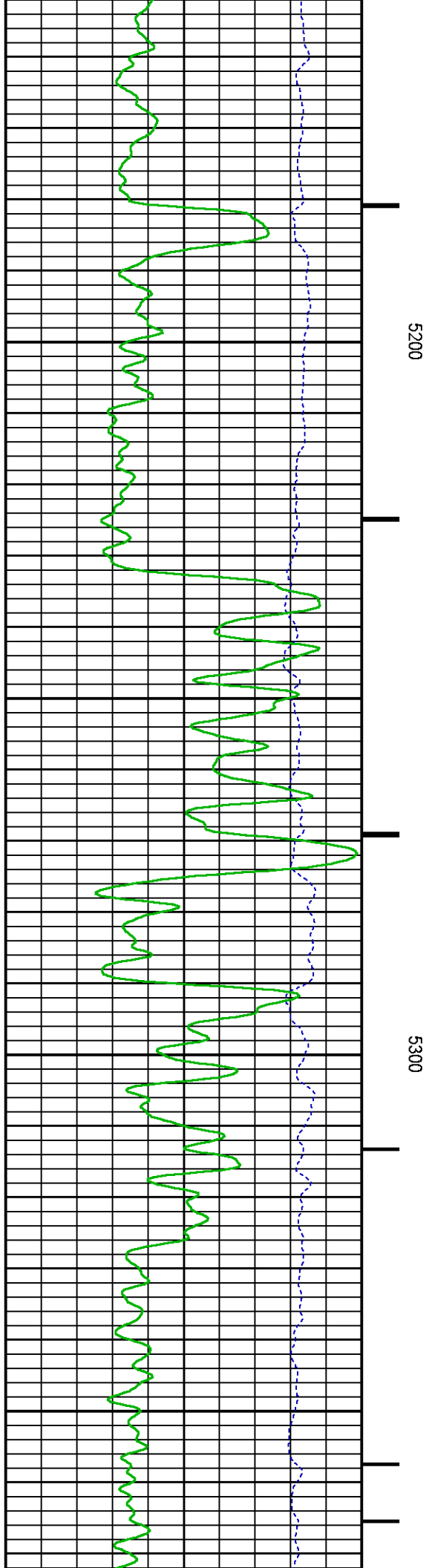
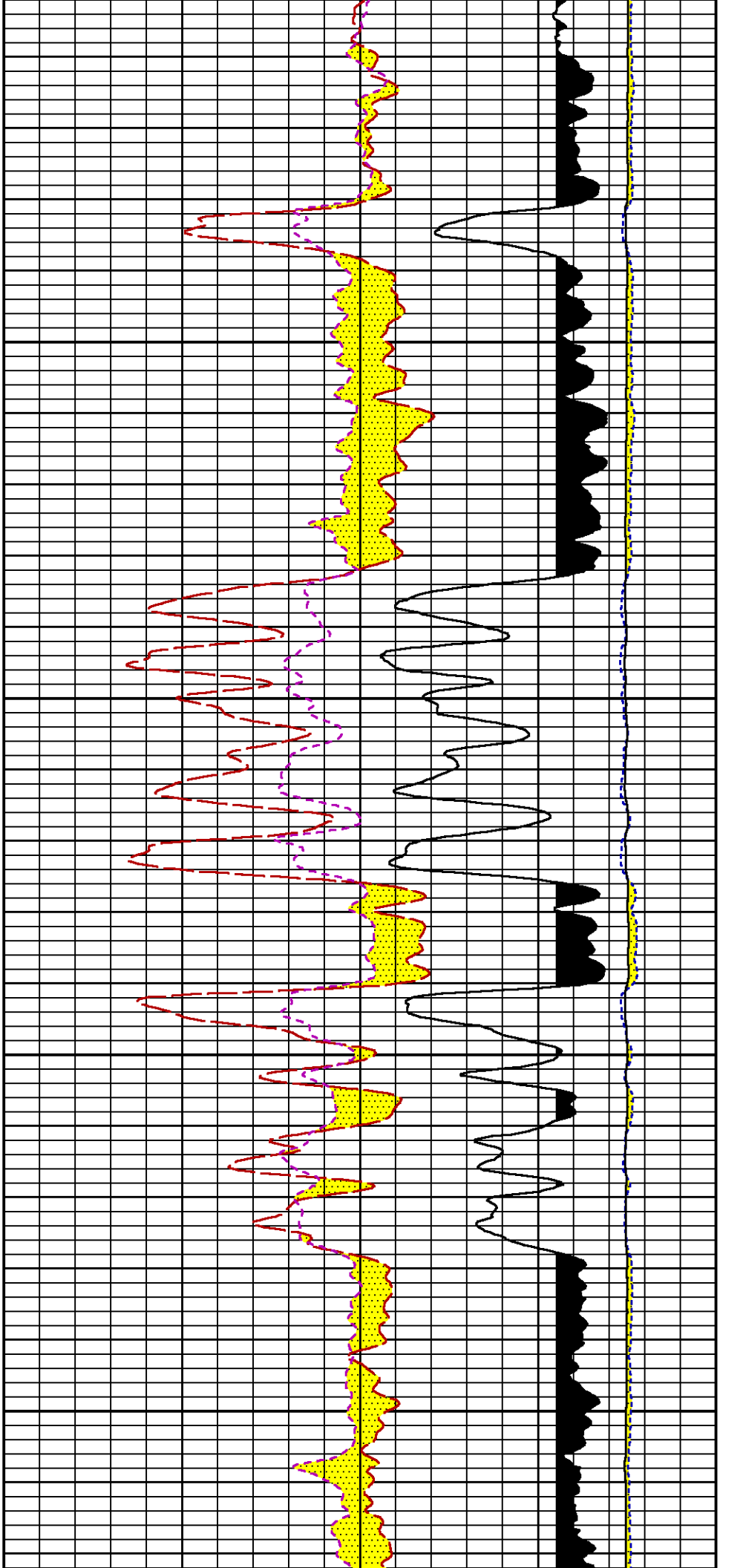


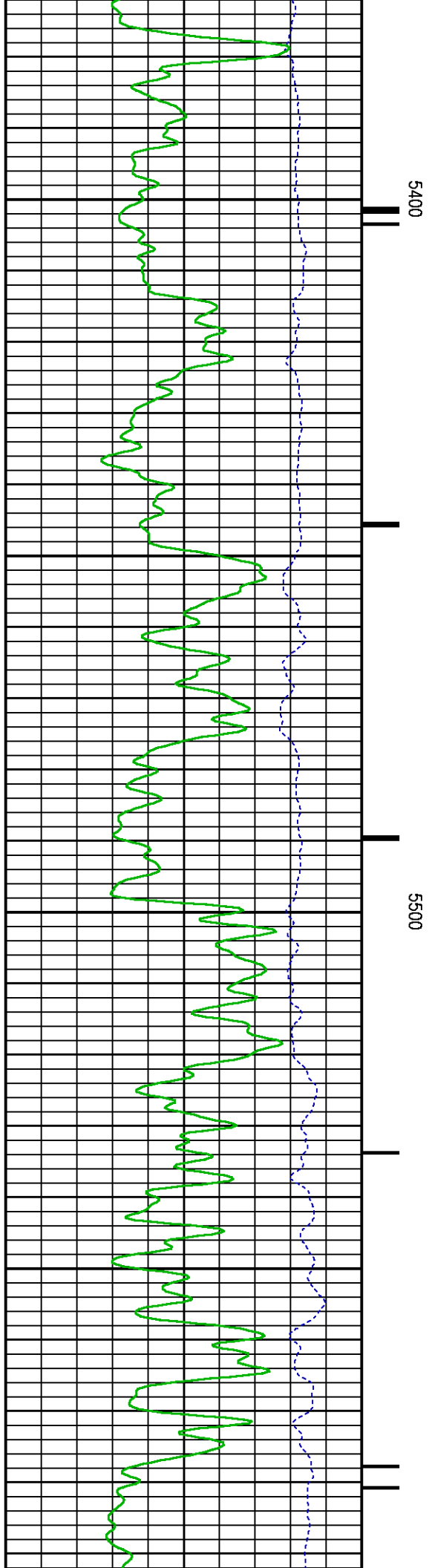
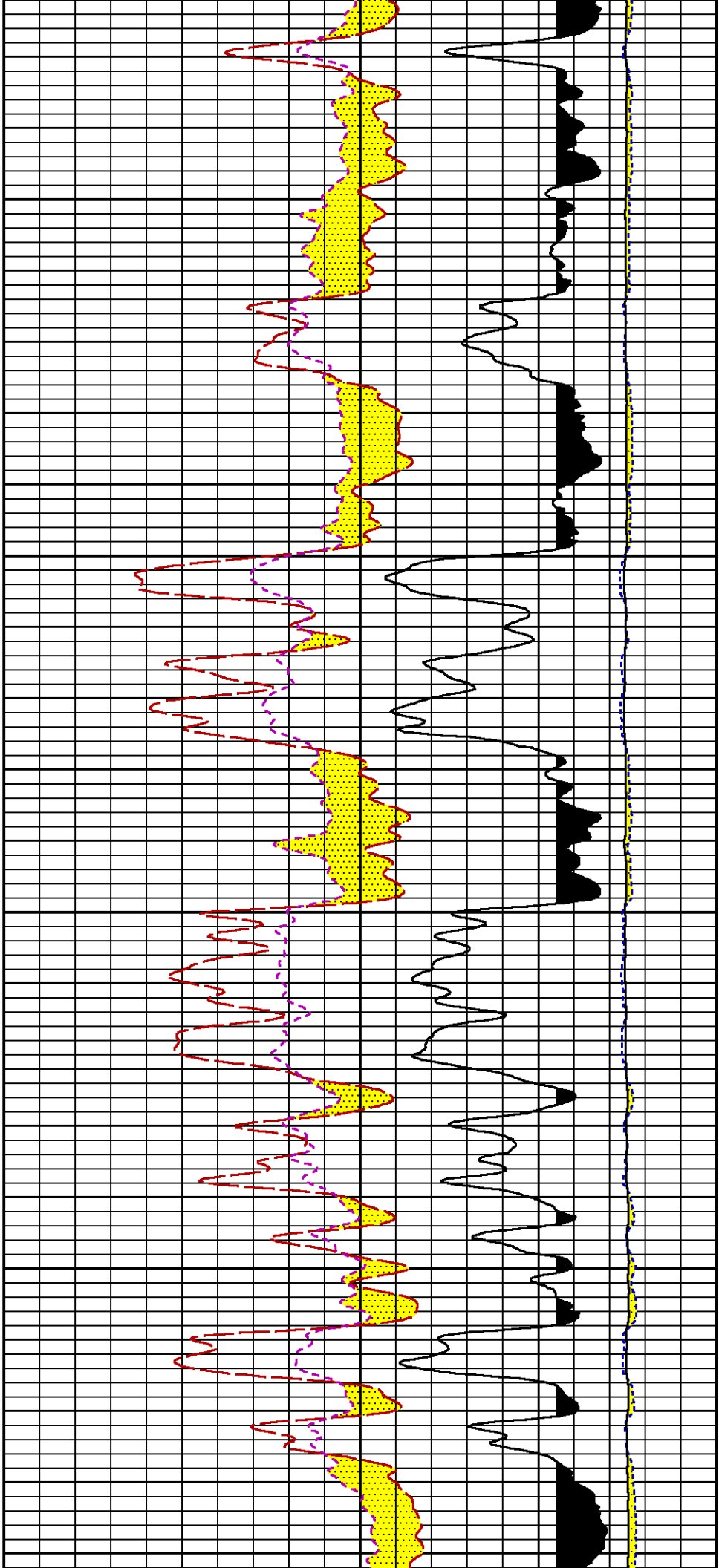


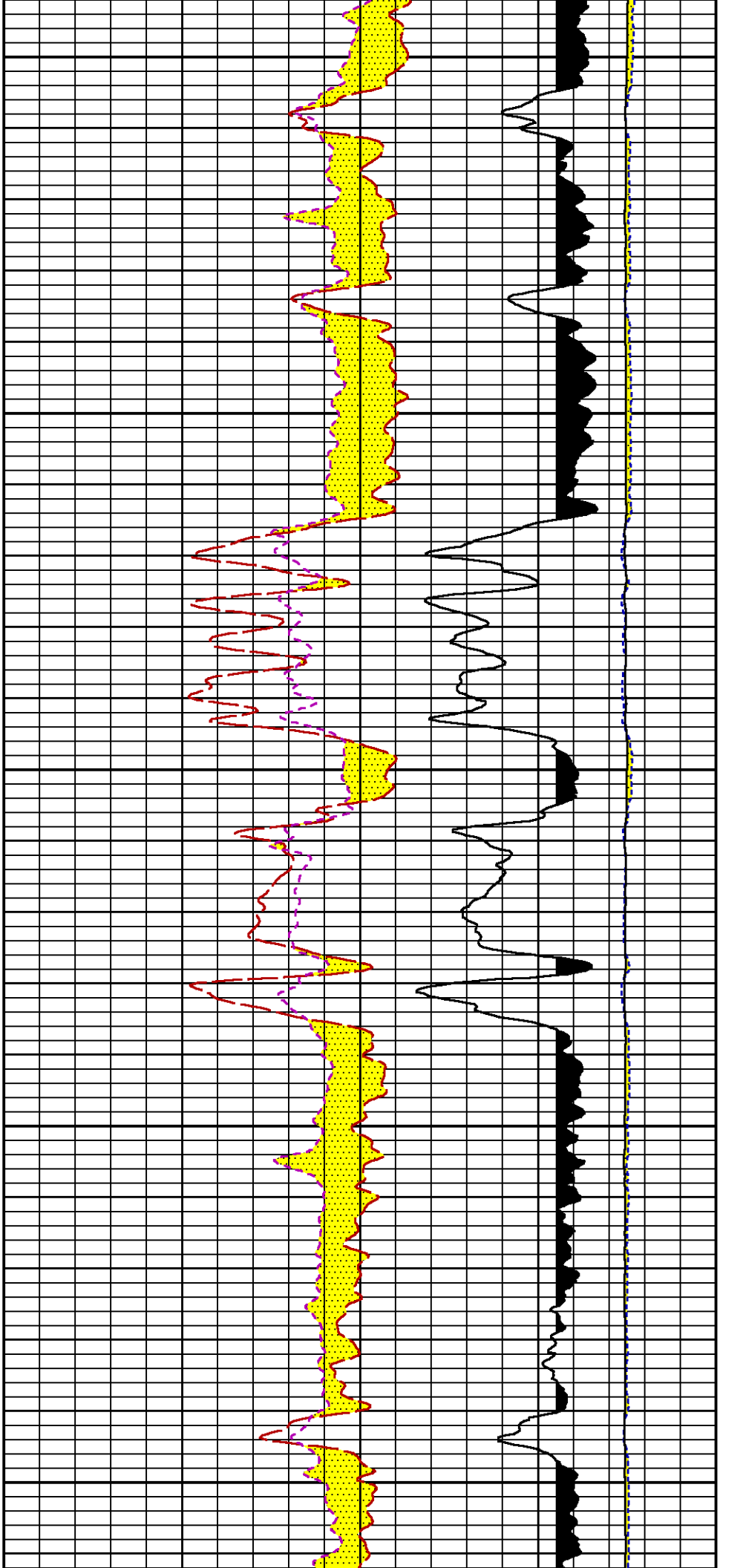








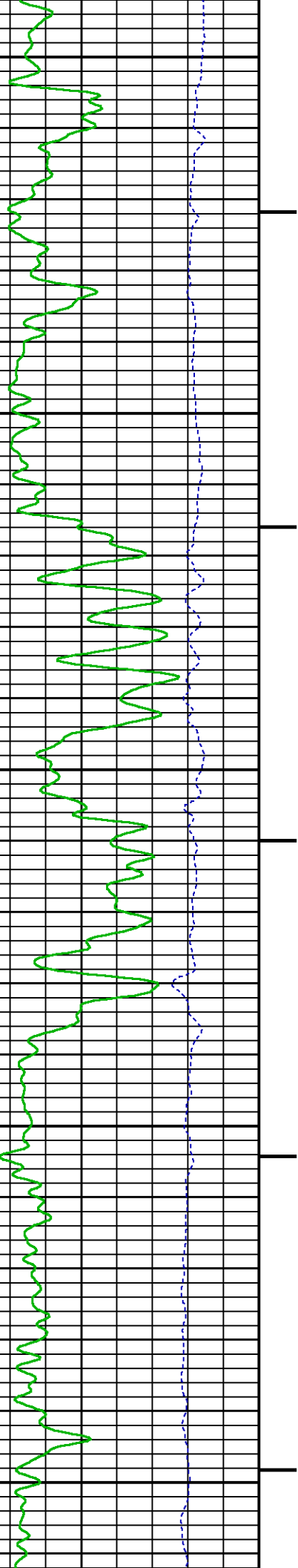


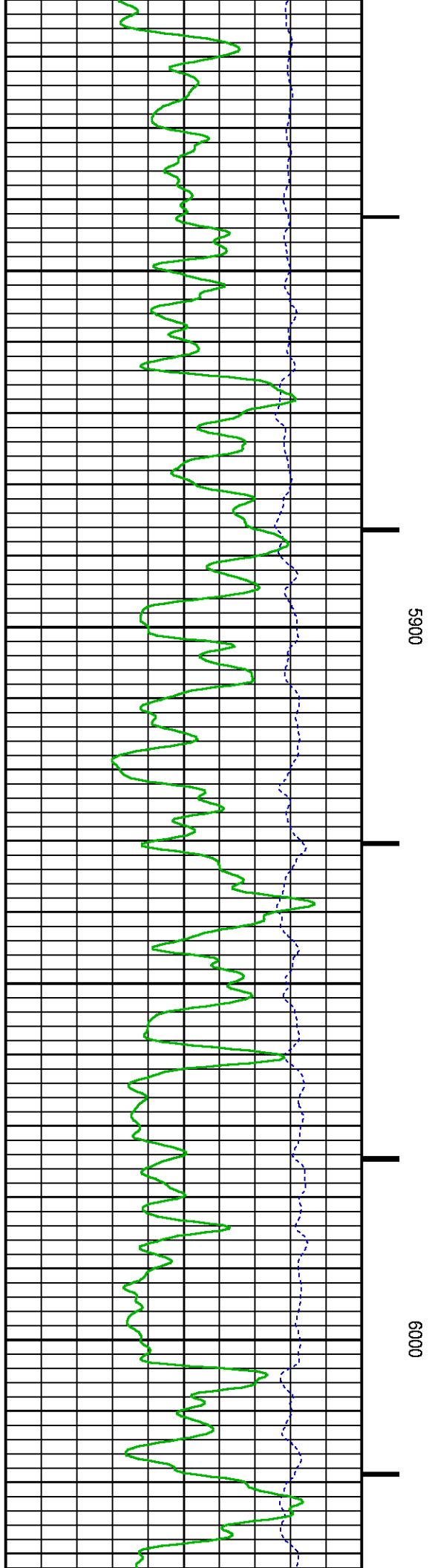
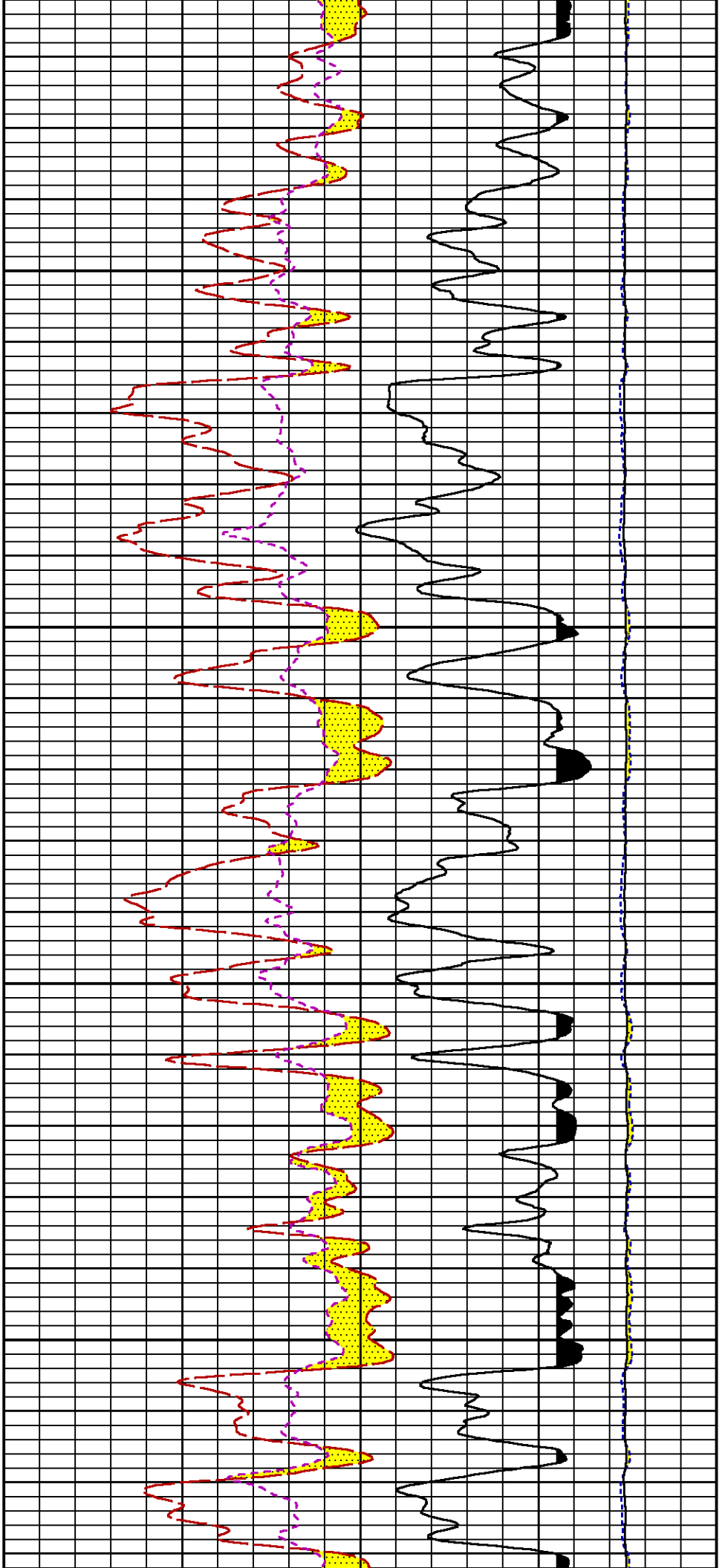


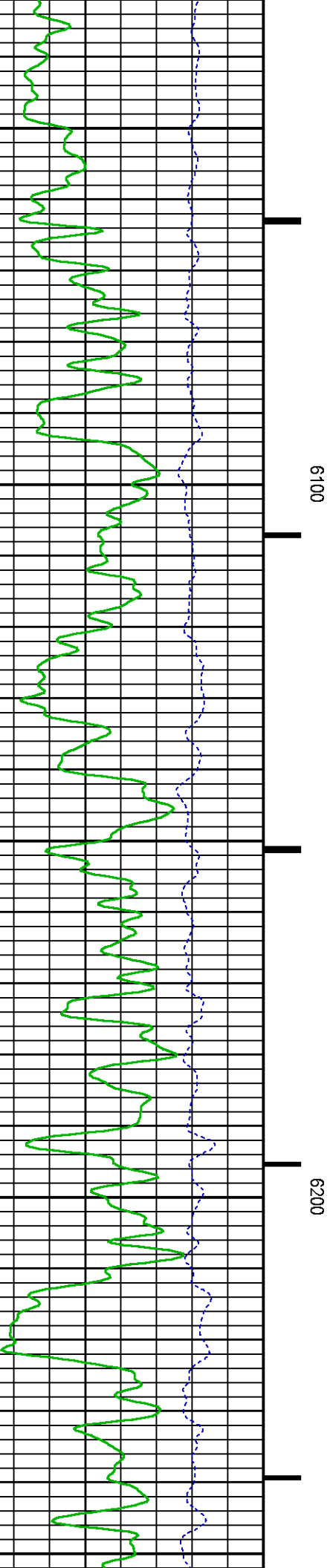
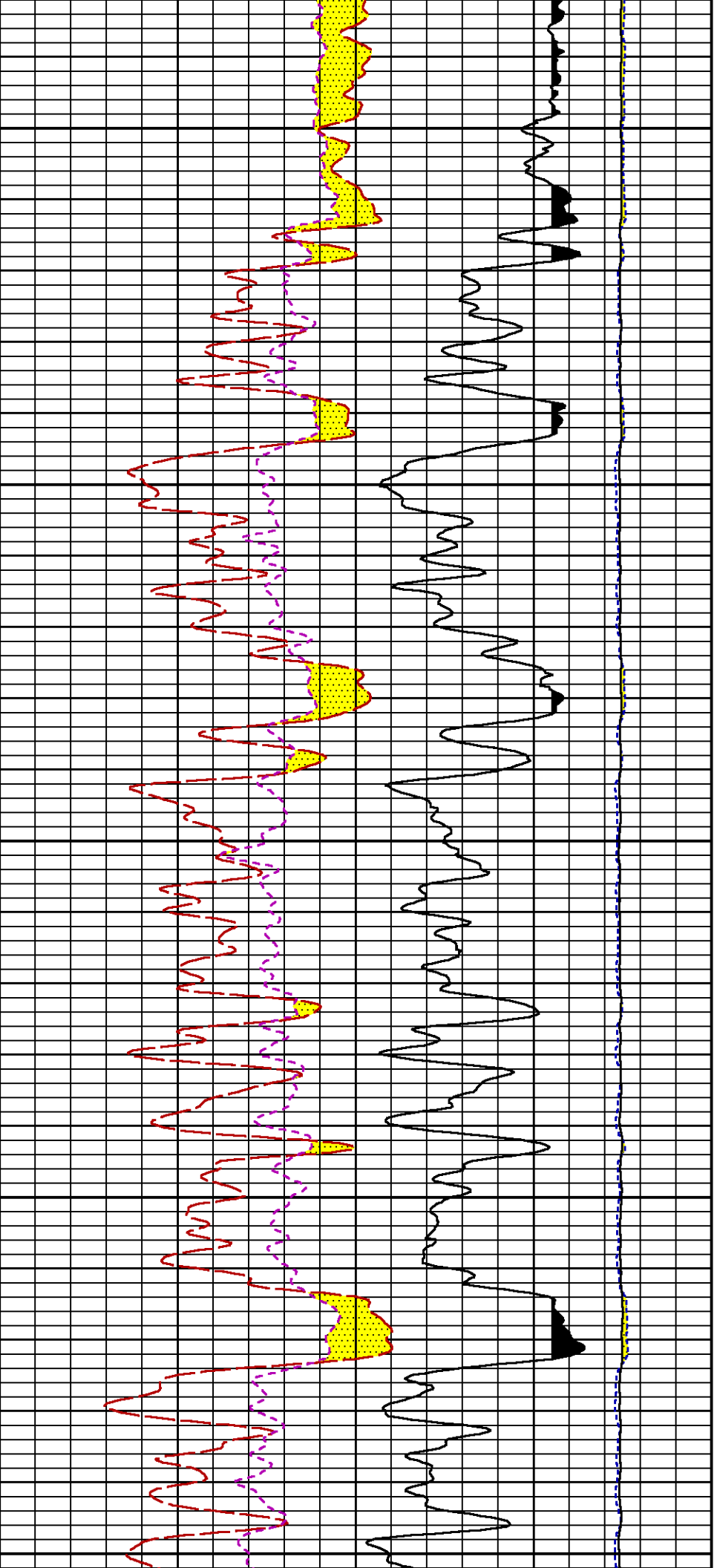
5600

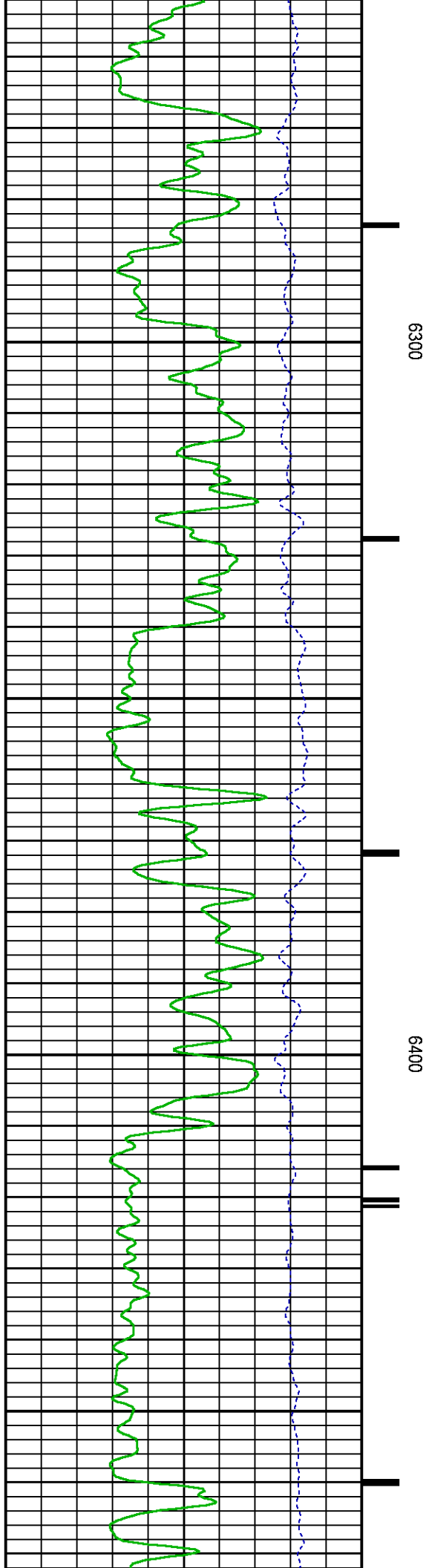
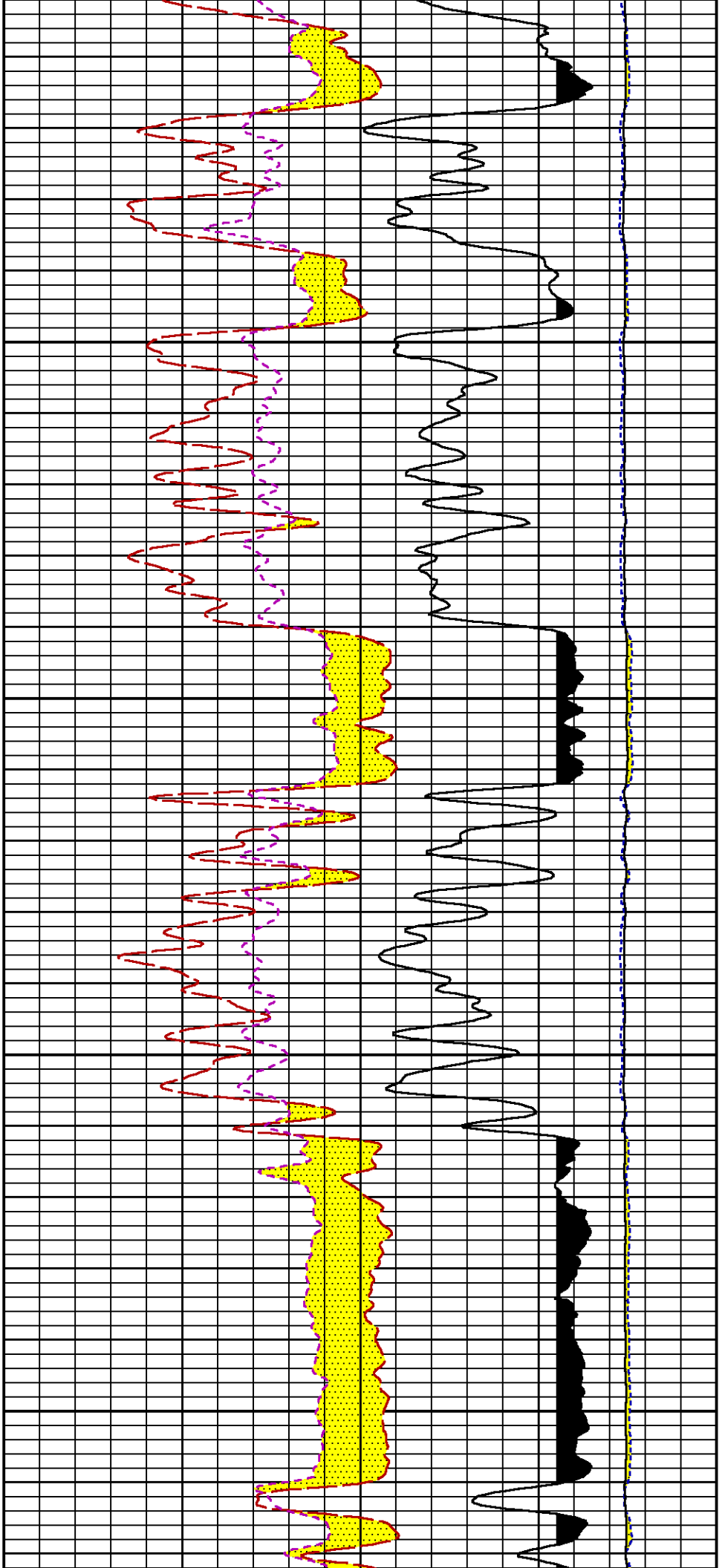
5700

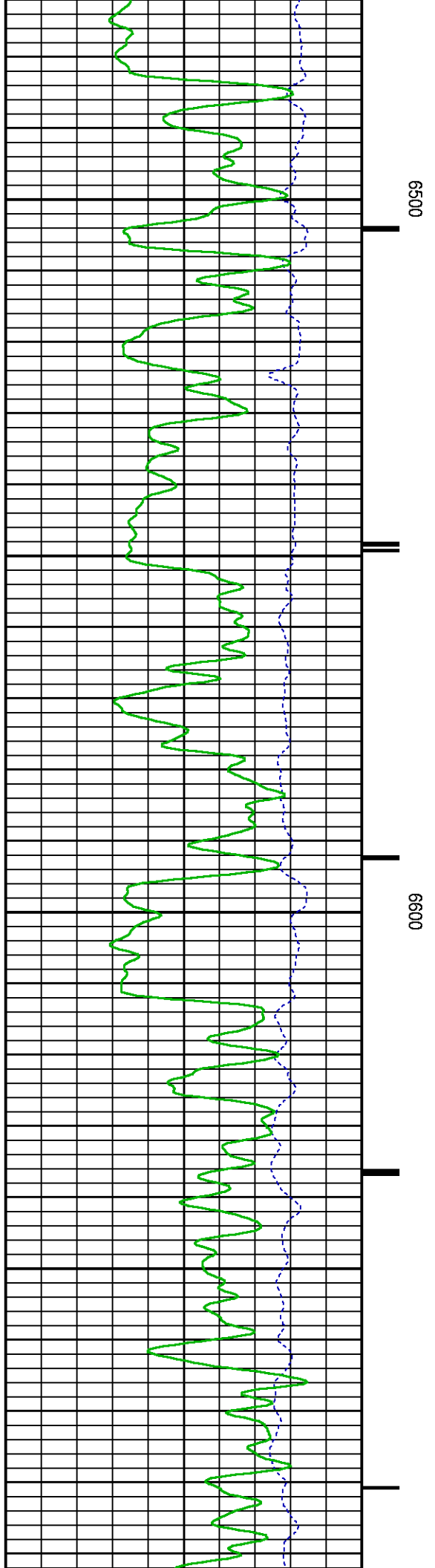
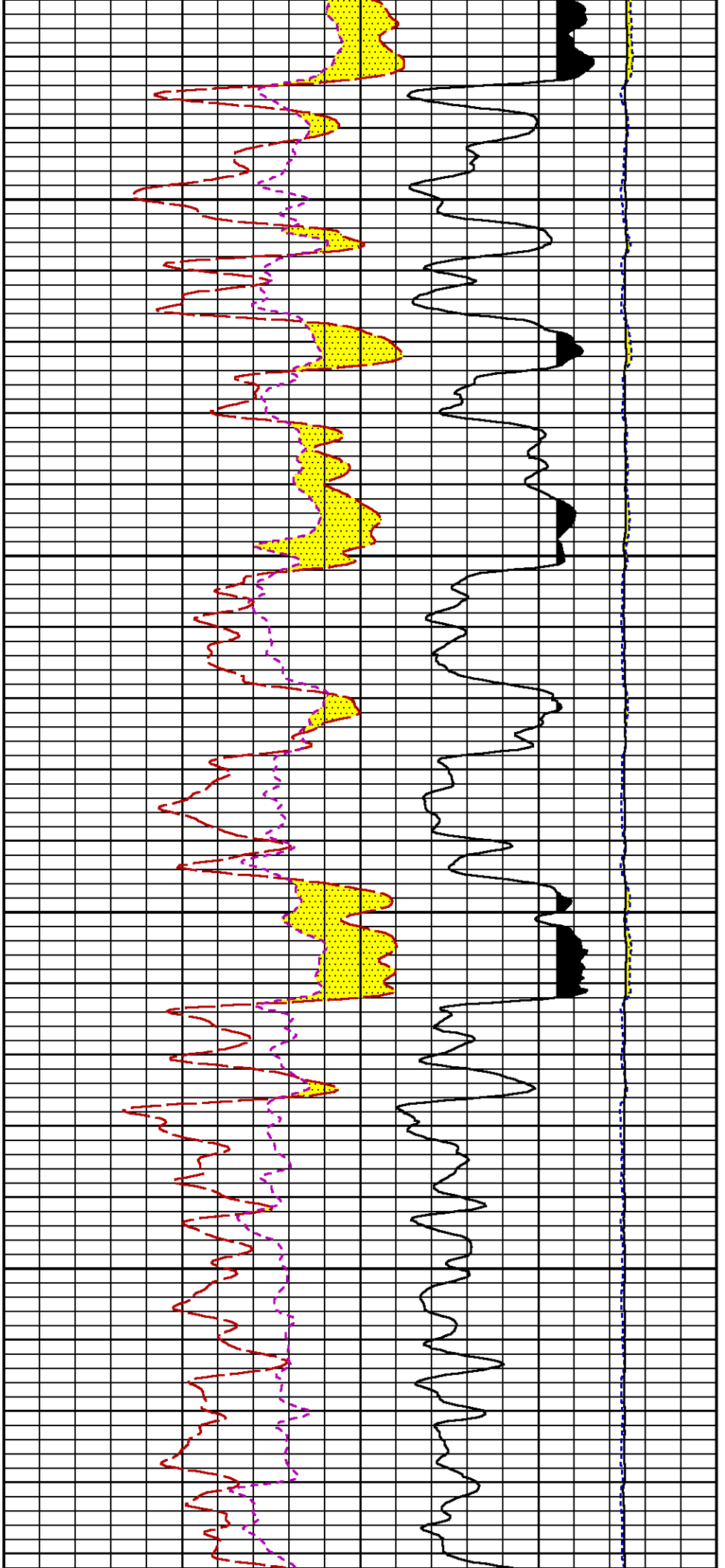
5800

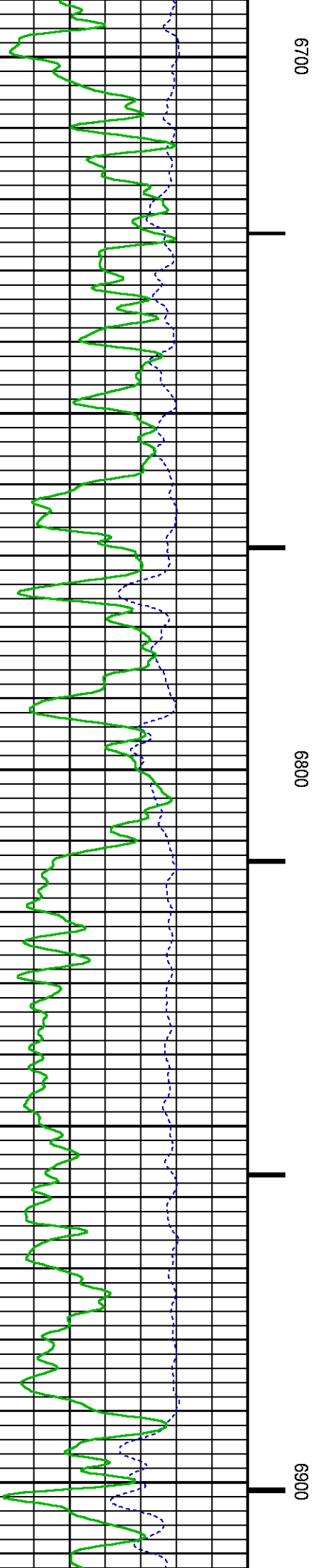
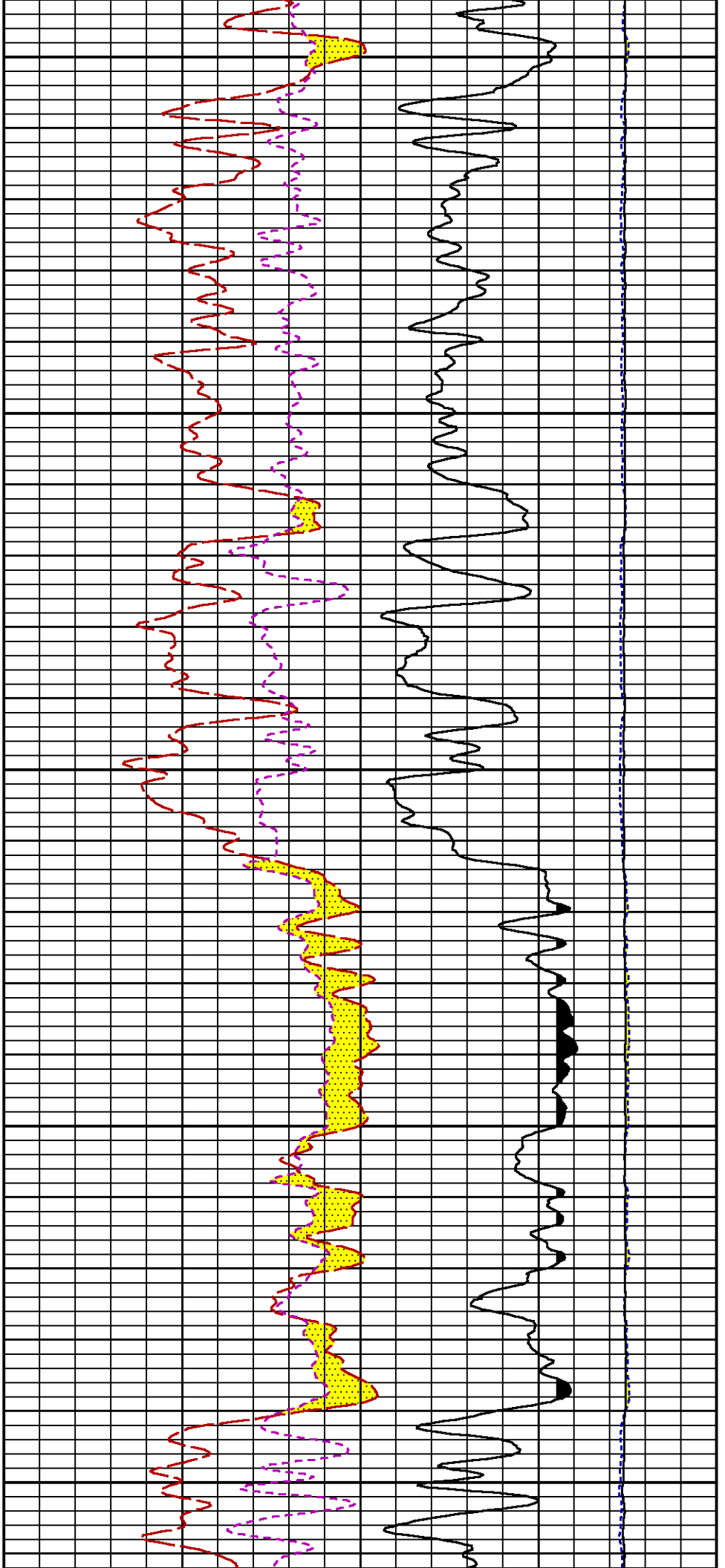




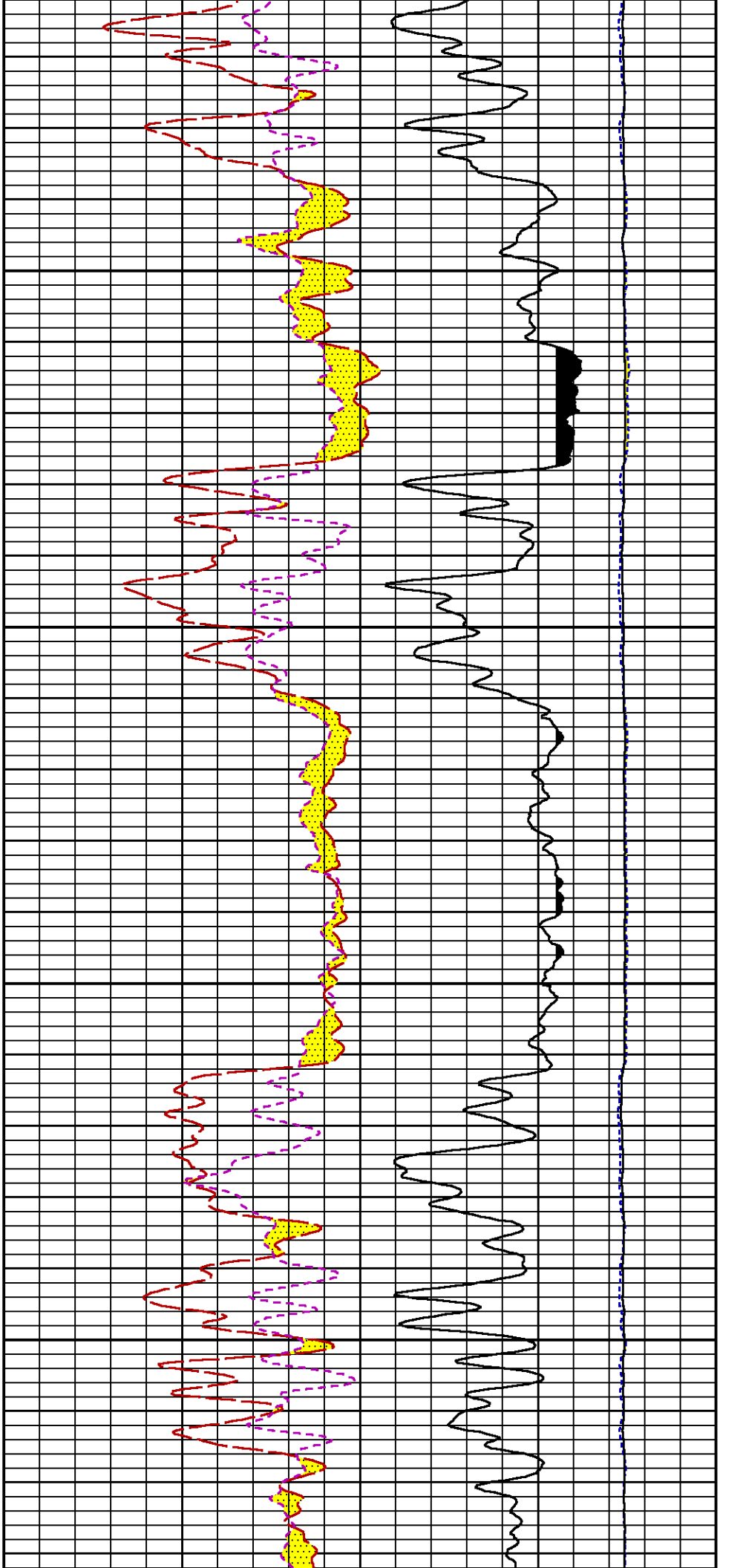






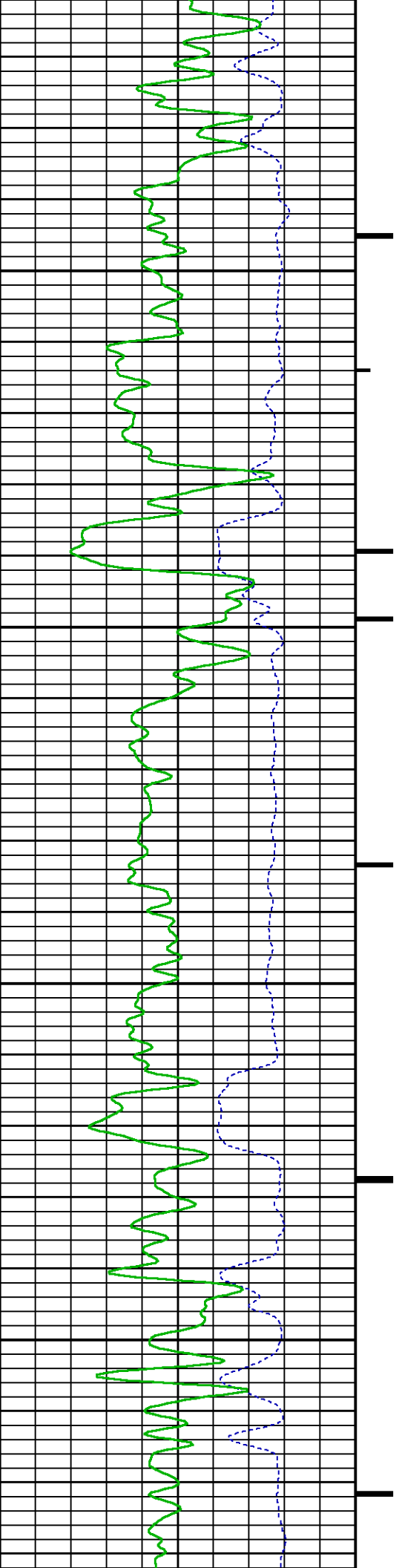


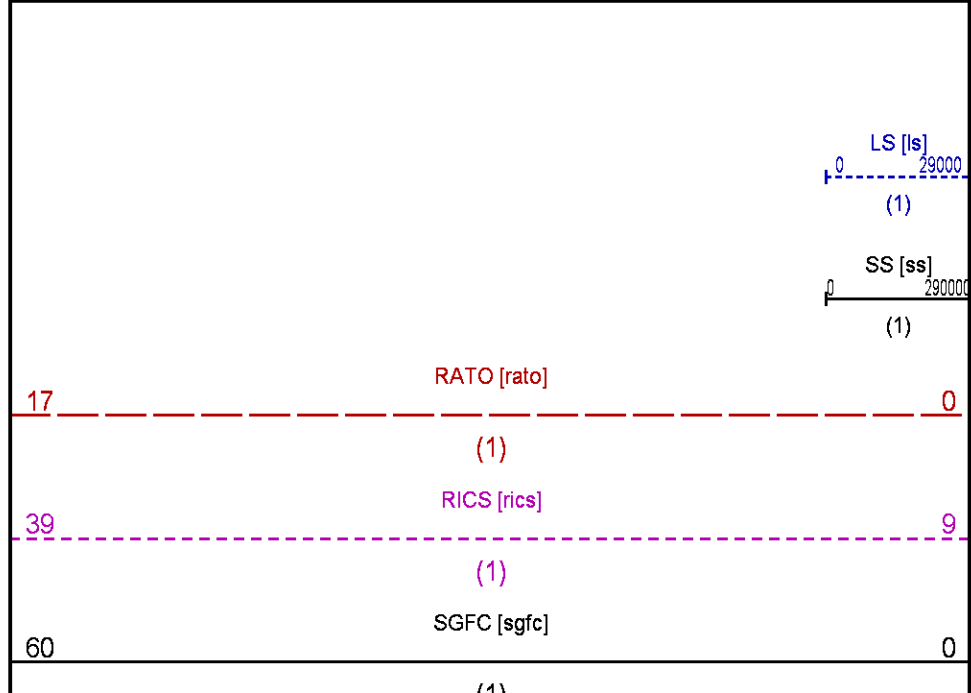
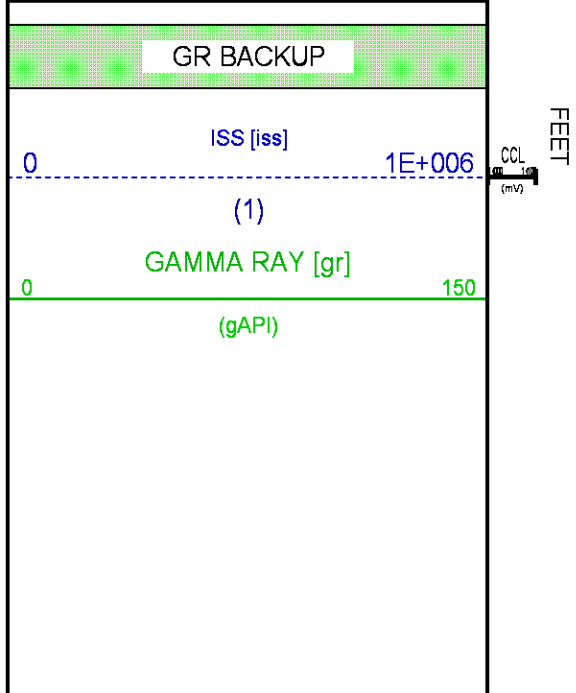
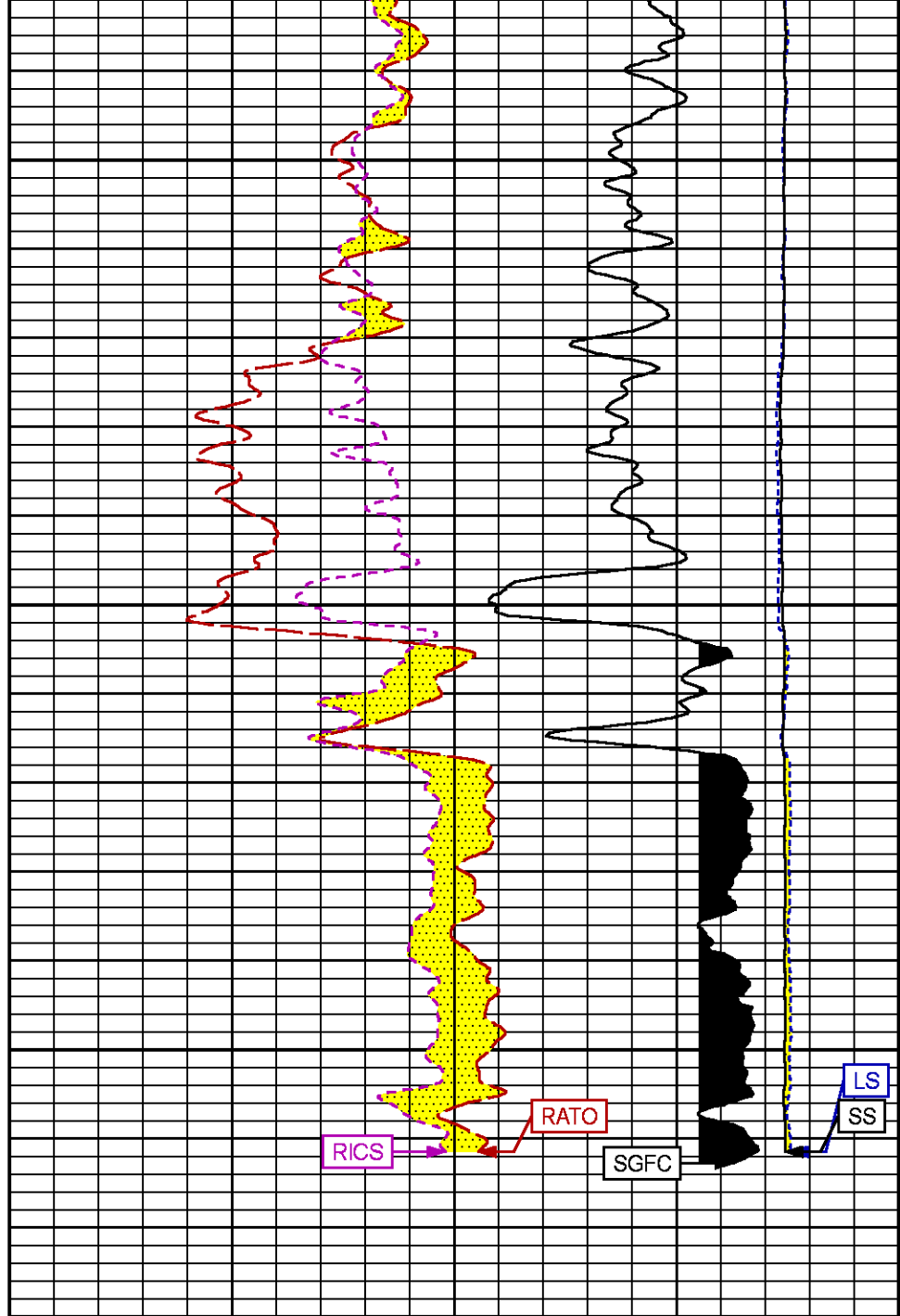
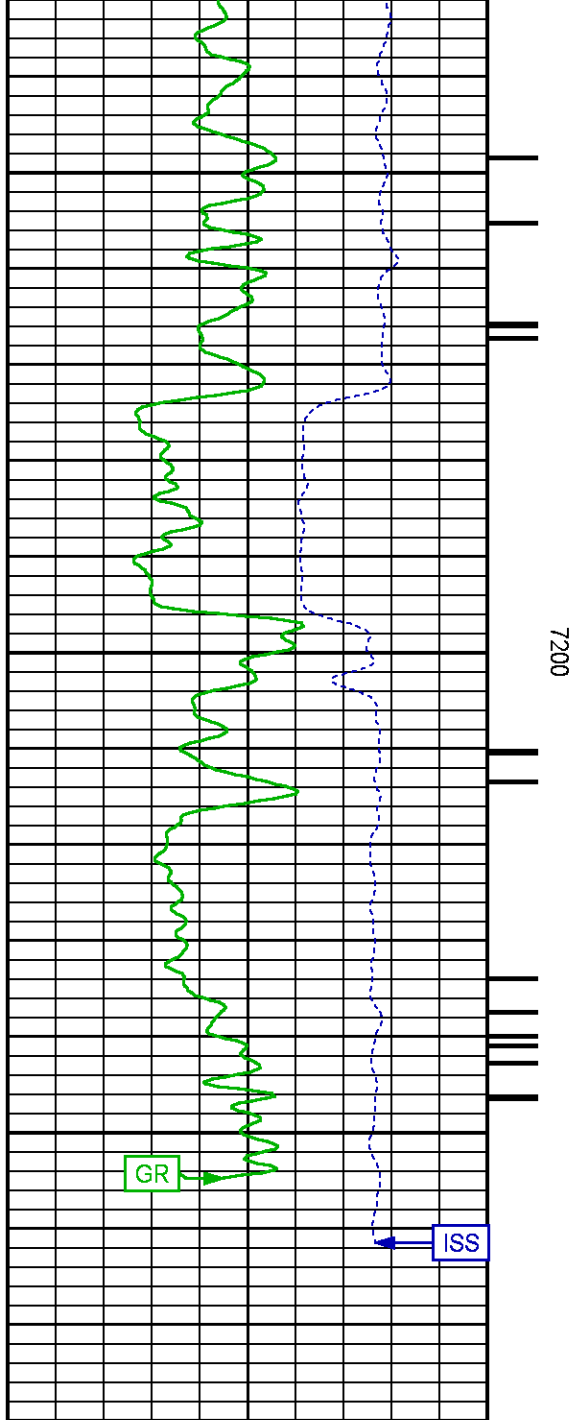




7000

7100





## REPEAT SECTION PNC-3D MODE

ECLIPS 6.2wu1 PC-ECLIPS General Release Rel 6.2w Update 1 Fri Apr 25 10:54:53 Central Daylight Time 2014  
Updates: 46 Patches: 5

Plotted: Sat Jan 03 16:31:05 2015

### PARAMETER AND FILTER SUMMARY REPORT

FILE: C:\dat1a\093853\354h02.prm  
LOGGING MODE: DEPTH DIRECTION: UP  
TOP DEPTH: 6679.000 ft BOTTOM DEPTH: 7014.750 ft

#### SYMMETRIC FILTER

MEASUREMENT TYPE	PARAMETER	VALUE	UNITS	INTERVAL (ft)
GR	FILTER ( )	medium (1)		TOP BOTTOM

#### RPM PROCESSING

MEASUREMENT TYPE	PARAMETER	VALUE	UNITS	INTERVAL (ft)
PNC Parameters	BOREHOLE CONTENTS	FLUID		TOP BOTTOM
	OPEN/CASED HOLE	CASED HOLE		" "
	BOREHOLE SIZE	8.50	in	" "
	CASING SIZE	4.50	in	" "
	MATRIX	SANDSTONE		" "
	CORRECTION BUFFER	11		" "

### CURVE DESCRIPTION REPORT

CURVE NAME	CREATION DATE	CURVE DESCRIPTION
F1:CCL	Jan 3 12:17:14 2015	CASING COLLAR LOCATOR
F1:GR	Jan 3 12:17:14 2015	GAMMA RAY
F1:ISS	Jan 3 12:17:14 2015	INELASTIC SHORT SPACE COUNT RATE
F1:LS	Jan 3 12:17:14 2015	LONG SPACE COUNT RATE
F1:RATO	Jan 3 12:17:14 2015	SHORT/LONG SPACE COUNT RATE RATIO
F1:RICS	Jan 3 12:17:14 2015	SHORT SPACE INELASTIC TO CAPTURE COUNT RATE RATIO (ISS/CSS)
F1:SGFC	Jan 3 12:17:14 2015	CORRECTED FORMATION SIGMA
F1:SS	Jan 3 12:17:14 2015	SHORT SPACE COUNT RATE

### CURVE MEASURE POINT OFFSET

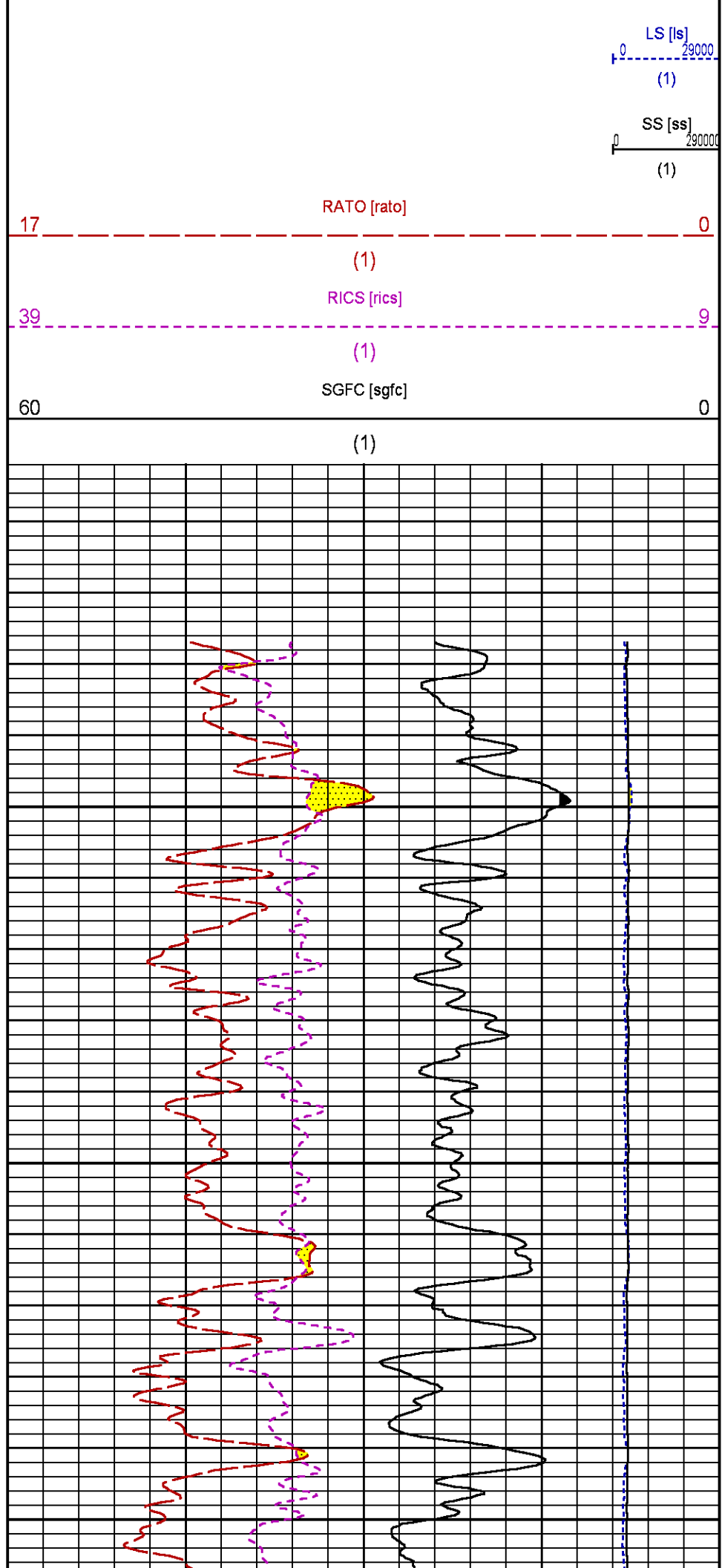
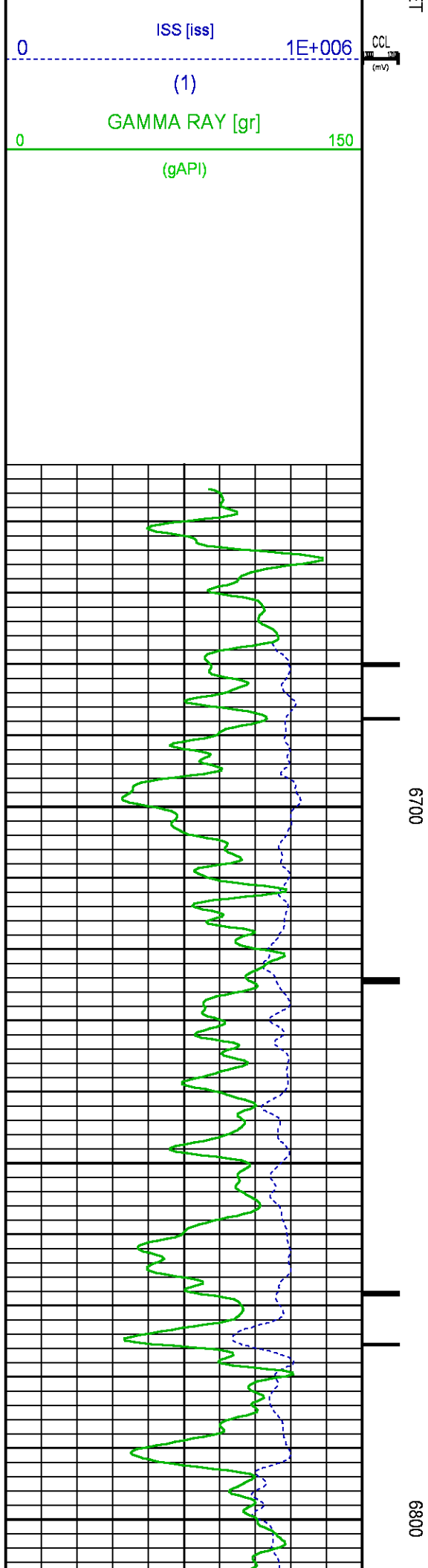
CURVE	OFFSET (ft)	CURVE	OFFSET (ft)	CURVE	OFFSET (ft)	CURVE	OFFSET (ft)
CCL	25.00	ISS	12.75	RATO	12.75	SGFC	12.75
GR	22.75	LS	12.75	RICS	12.75	SS	12.75

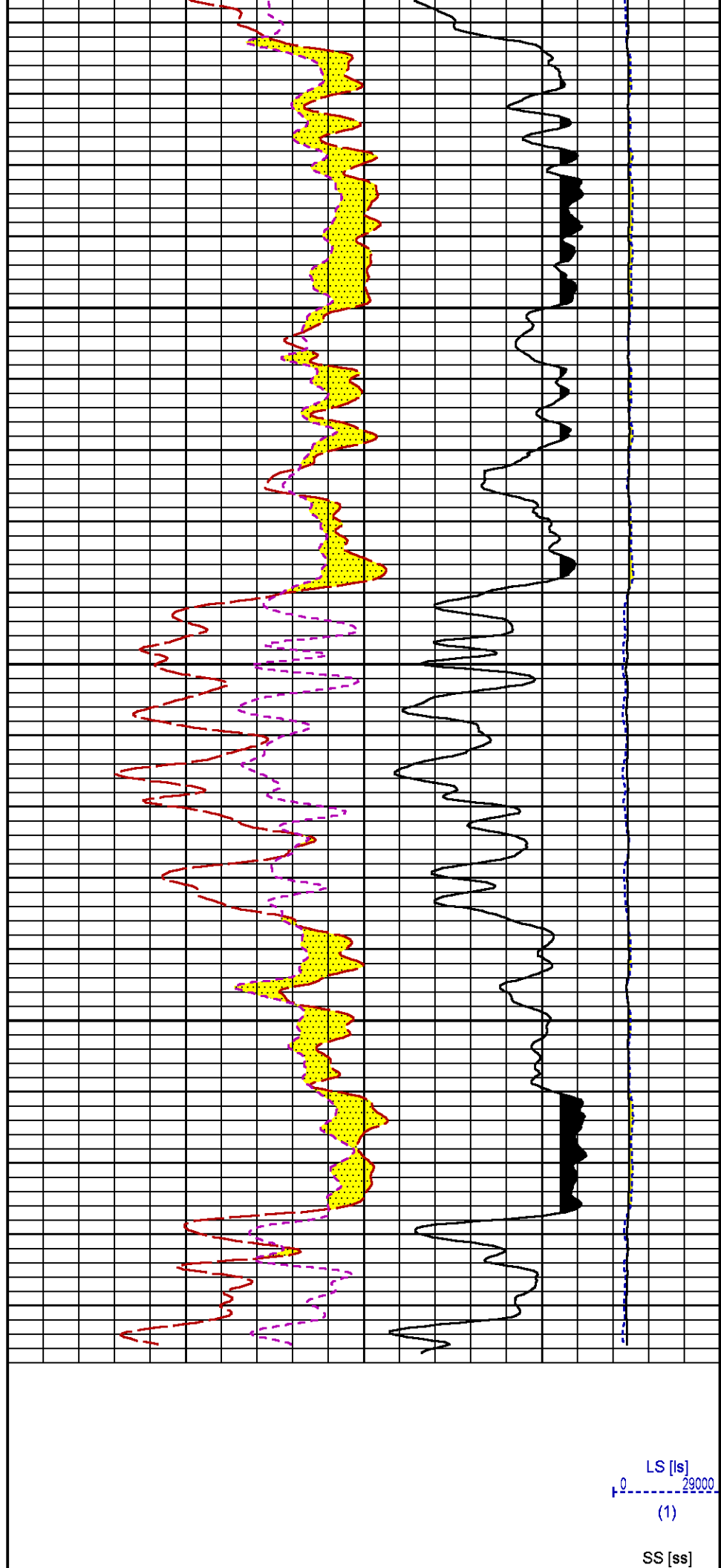
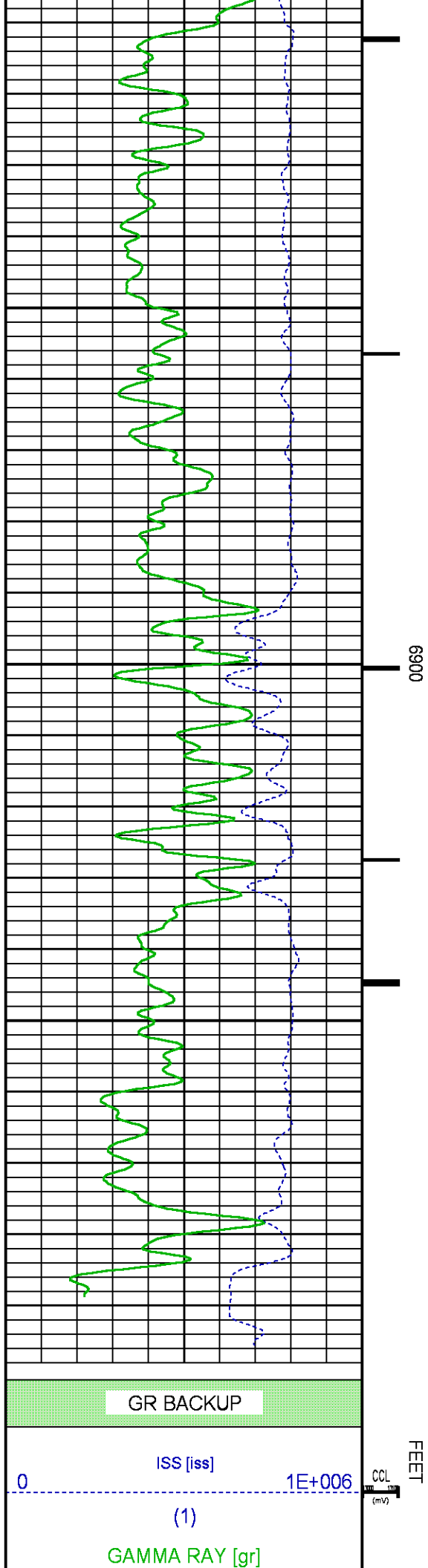
Presentation : BHUGHES-06627:C:\dat1a\093853\542\_RPM\_REPEAT.fvpdf [5"/100' Scale]  
Plot Interval : 6652 - 6996.75 Feet

Data File 1 : F1 : BHUGHES-06627:C:\dat1a\093853\542\_RPM\_REPEAT.xtf  
Created On : Jan 3 12:17:14 2015  
Company : WPX ENERGY  
Well : WPX GM 542-28  
Field : GRAND VALLEY  
File Interval : 6651.25 - 7011.5 Feet  
OCT : n354h

GR BACKUP

FEE





0	150		290000
(gAPI)			(1)
		RATO [rato]	
17			0
		(1)	
		RICS [rics]	
39			9
		(1)	
		SGFC [sgfc]	
60			0
		(1)	

## CALIBRATION / VERIFICATION SUMMARY

Source File: C:\dat1a\093853\354h.tp1

### GR PRIMARY CALIBRATION SUMMARY

TOOL #: 2812LA 10274382

DATE/TIME PERFORMED: Tue Dec 09 14:04:49 2014

UNIT #: 3885TD Z004271

CALB JIG #: 4702NK WA-612

	BACKGROUND (cts/s)	CALBRTR ON (cts/s)	CR DIFF (cts/s)	MULT	BACKGROUND (gAPI)	CALBRTR ON (gAPI)	CALBRTR (gAPI)
GR	61.18	268.02	206.8	1.015	62.11	272.11	210

### GR PRIMARY VERIFICATION SUMMARY

TOOL #: 2812LA 10274382

DATE/TIME PERFORMED: Tue Dec 09 14:07:05 2014

UNIT #: 3885TD Z004271

VERI JIG #: 4702NK WA-612

	BACKGROUND (cts/s)	CALBRTR ON (cts/s)	MULT	BACKGROUND (gAPI)	CALBRTR ON (gAPI)	DIFF. (gAPI)
GR	63.11	273.93	1.015	64.07	278.11	214.04
						200.00 220.00

### RPM\_PNC\_3D PRIMARY CALIBRATION SUMMARY

TOOL: 8283PA 10585555

DATE/TIME PERFORMED: Tue Dec 09 13:08:21 2014

UNIT: 3885TD Z004271

CALIBRATOR: 2437XB 112674

SOURCE: 8281AA 11765054

HOURS: 8281AA 670

	ISS	Mtr Vlt (V)	SS Gain	LS Gain	XLS Gain	EA Temp (degF)	Sync Delay (usec)	RCAL
Raw Data	801712	124	2342	2286	2235	111	7	0.9721
Interpolated	1300000	147	2317	2281	2228			

	ISS	BKS	BKL	BKX	SGA1	SDA1	SGA2	SDA2
Raw Data	801712	6404	989	140	26.08	0.15	24.23	0.33
					25.35 26.40	0.00 0.20	23.60 24.80	0.00 0.40

	ISS	ILS	IXS	SS	SS2	LS	CSS	CLS
Raw Data	801712	170477	26574	89502	31836	8242	54189	13205
Fit Quality %		0.952	0.776	0.752	0.741	1.017	0.683	0.990

	ISS	RBOR	RIN ISS/ILS	RIN13 ISS/IXS	RICS ISS/CSS	RATO SS/LS	RTWO SS2/LS	RONE CSS/CLS
Raw Data	801712	1.43	4.70	30.18	14.80	10.86	3.86	4.10
		1.42 1.45	3.55 5.52	22.20 32.70	10.99 16.34	10.06 11.10	3.57 3.95	3.76 4.22
Fit Quality %		0.051	0.164	0.223	0.184	0.174	0.189	0.168
Reduced	1392560	1.43	4.71	30.20	14.80	10.88	3.87	4.11
		1.42 1.45	4.33 5.52	27.60 32.70	13.70 16.34	10.06 11.10	3.57 3.95	3.76 4.22

## INSTRUMENT CONFIGURATION

Source File: C:\dat1a\093853\VRPM-tdg.meta

A3 CABLEHEAD  
Diameter : 1.37"

PCM POWER SUPPLY  
Diameter : 1.70"  
Length : 3.86'  
Weight : 18 lbs  
Series : 8250EA  
Mnemonic : PCM

TELEMETRY / CCL  
Diameter : 1.70"  
Length : 4.46'  
Weight : 20 lbs  
Series : 8248ED

33.24'

Mnemonic : PCM  
Measure Point: 1.00': CCL MP

#### SONDEX GAMMA RAY

Diameter : 1.69"  
Length : 2.17'  
Weight : 11 lbs  
Series : 2812LA  
Mnemonic : GR  
Measure Point: 0.63': GR MP

CCL MP 25.19'

GR MP 22.64'

#### RPM ELECTRONICS

Diameter : 1.70"  
Length : 4.48'  
Weight : 16 lbs  
Series : 8281EA  
Mnemonic : RPM

#### RPM C DETECTOR SECTION

Diameter : 1.70"  
Length : 9.40'  
Weight : 41 lbs  
Series : 8283PA  
Mnemonic : RPM  
Measure Point: 5.45': XLS DETECTOR  
Measure Point: 5.04': LS DETECTOR  
Measure Point: 4.79': SS DETECTOR

XLS DETECTOR 13.58'  
LS DETECTOR 13.16'  
SS DETECTOR 12.91'

#### RPM SOURCE SECTION

Diameter : 1.70"  
Length : 4.70'  
Weight : 18 lbs  
Series : 8281FA  
Mnemonic : RPM

#### TEMPERATURE / PRESSURE

Diameter : 1.70"  
Length : 3.30'  
Weight : 13 lbs  
Series : 8255XA  
Mnemonic : SRPL  
Measure Point: 1.52': TEMP MP


TEMP MP 1.65'  
PRES MP

#### BULL PLUG 1 11/16

0.00'

TOTAL LENGTH: 33.24'  
TOTAL WEIGHT: 140 lbs  
MAX DIAMETER: 0'1.70"



	<b>COMPANY</b> <u>WPX ENERGY</u>		<b>FILE NO:</b> <u>CH093853</u>
	<b>WELL</b> <u>WPX GM 542-28</u>		<b>API NO:</b> <u>05045225040000</u>
	<b>FIELD</b> <u>GRAND VALLEY</u>		
	<b>COUNTY</b> <u>GARFIELD</u>	<b>STATE</b> <u>COLORADO</u>	
<b>LOCATION:</b> SHL: 1511' FSL & 2353' FWL BHL: 2555' FNL & 1340' FEL (SENE)		<b>ELEVATIONS:</b> KB 5500 FT DF GL 5476 FT	28 6S 96W GM 323-28 PAD H&P 318
<b>SEC</b> <u>28</u> <b>TWP</b> <u>6S</u> <b>RGE</b> <u>96W</u>		<b>DATE</b> <u>3-Jan-2015</u>	

