

**Multifinger Inspection
Gamma Ray
Casing Collar Log**

Company Chevron USA Inc.		Country USA	
Well Union Pacific 9-29			
Field Rangely			
County Rio Blanco			
State Colorado			
Location:		API #: 05-103-05656	
Lat/Long: 40.115829/-108.864827		None	
SEC TWP 2N RGE 102W		Other Services	
Permanent Datum	Ground Level	Elevation	47443'
Log Measured From	Kelly Bushing	K.B.:	47454'
Drilling Measured From	Kelly Bushing	D.F.:	47453'
		G.L.:	47443'

Date	2015 April 24			
Run Number	1			
Depth Driller	6290 FT			
Depth Logger	5556 FT			
Bottom Logged Interval	5549 FT			
Top Log Interval	3549 FT			
Open Hole Size	---			
Type Fluid	Brine			
Density / Viscosity	---			
Max. Recorded Temp.	---			
Estimated Cement Top	---			
Time Well Ready	09:15			
Time Logger on Bottom	11:00			
Equipment Number	HD 0264			
Location	Grand Junction			
Recorded By	D. Shannon			
Witnessed By	D. Raquin			
Borehole Record				
Run Number	Bit	From	To	Size
				Weight
				From
				To
Tubing Record				
Casing Record	Size	Wgt/ft	Top	Bottom
Surface String				
P. String				
P. Production String	7 IN	23 LB	Surface	5650 FT
Liner				

<<< Fold Here >>>

All interpretations are opinions based on inferences from electrical or other measurements and we cannot and do not guarantee the accuracy or correctness of any interpretation, and we shall not, except in the case of gross or willful negligence on our part, be liable or responsible for any loss, costs, damages, or expenses incurred or sustained by anyone resulting from any interpretation made by any of our officers, agents or employees. These interpretations are also subject to our general terms and conditions set out in our current Price Schedule.

Comments

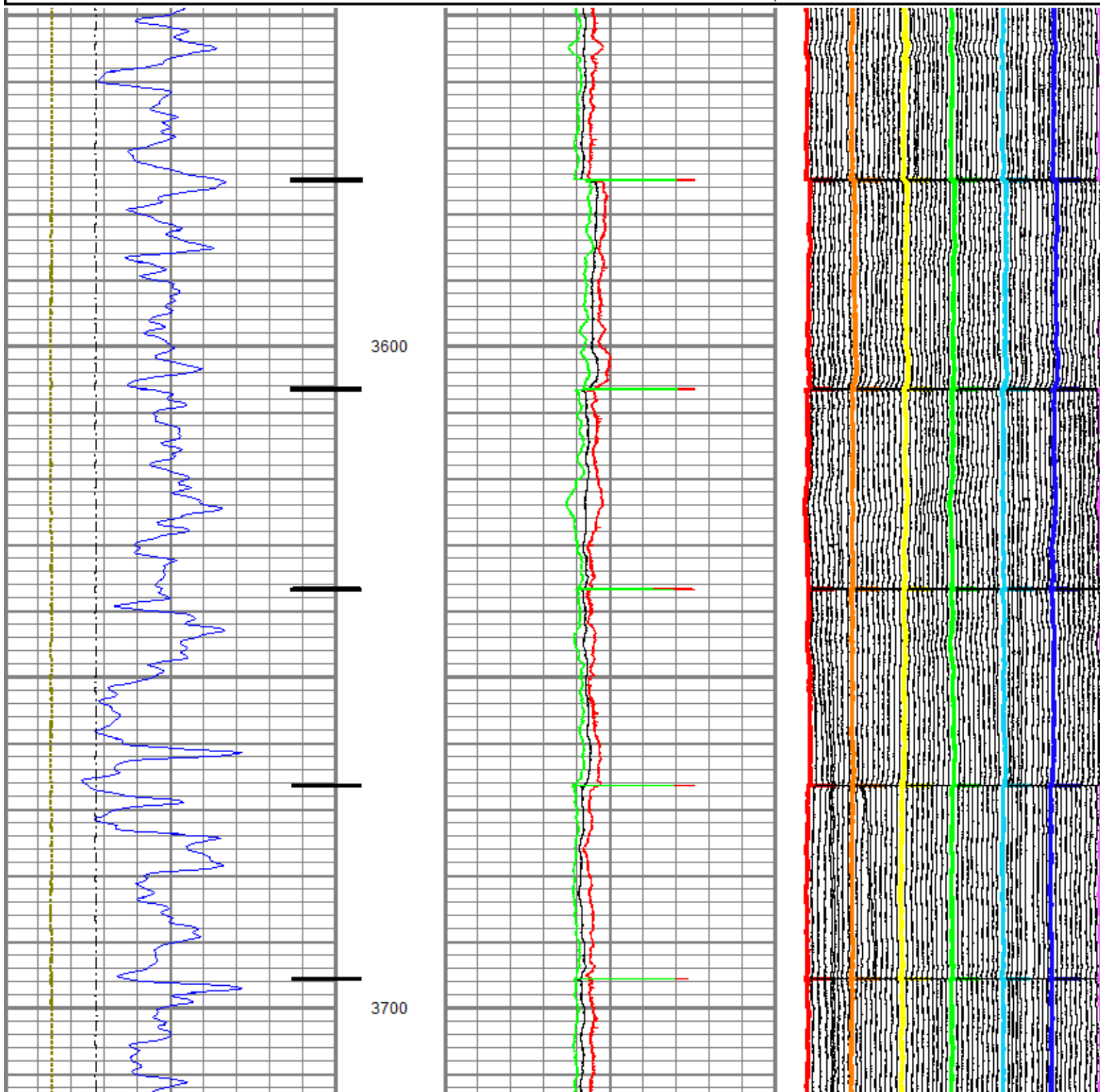
Log recorded as per customer request.
Depth shifted 10' down hole to correlate to customer reported GO-NO GO at 5556'.

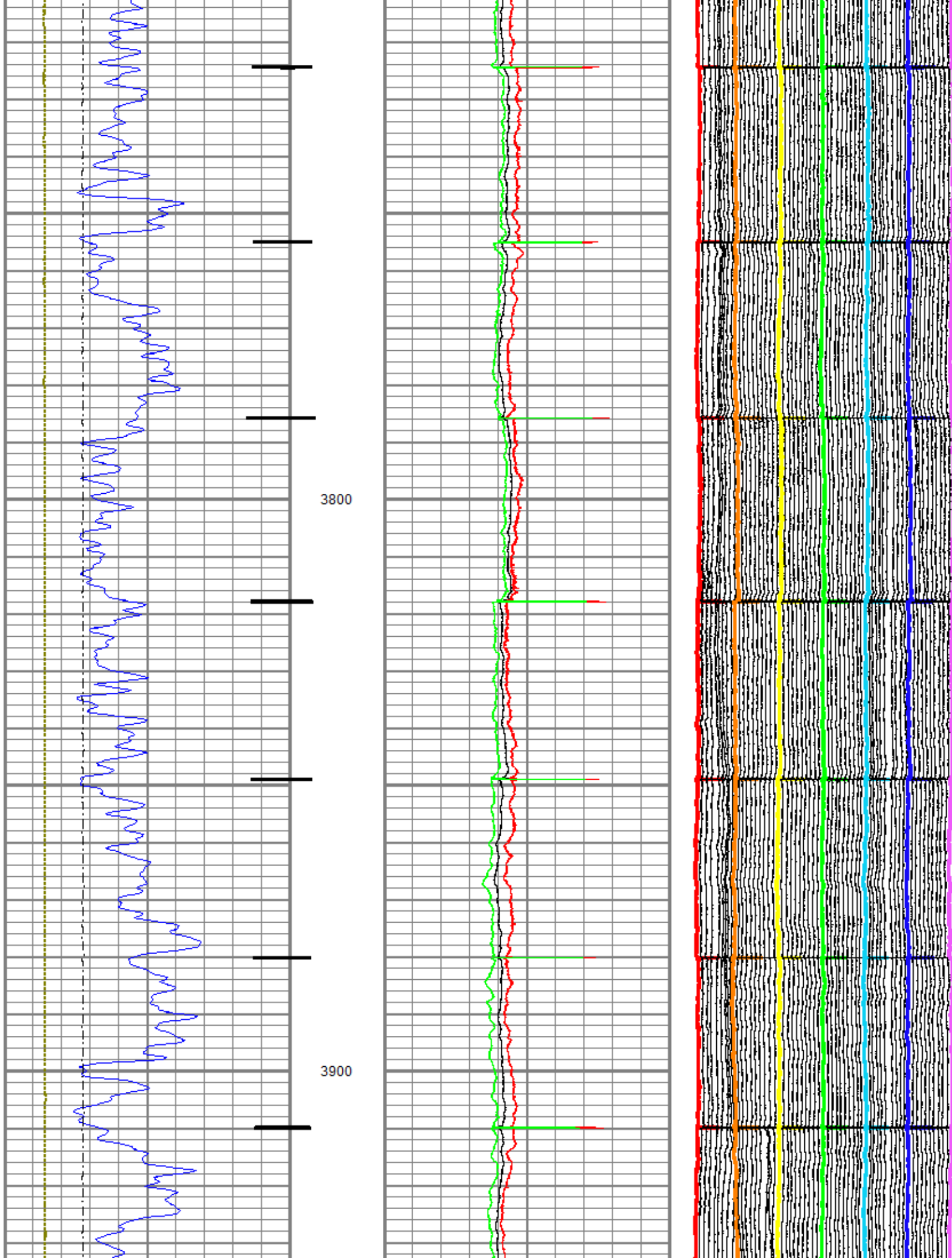
Database File: 2015apr24_unopnpacivic929.db
 Dataset Pathname: main
 Presentation Format: 70mit60_2
 Dataset Creation: Fri Apr 24 11:24:54 2015 by Log 7.0 B1
 Charted by: Depth in Feet scaled 1:240

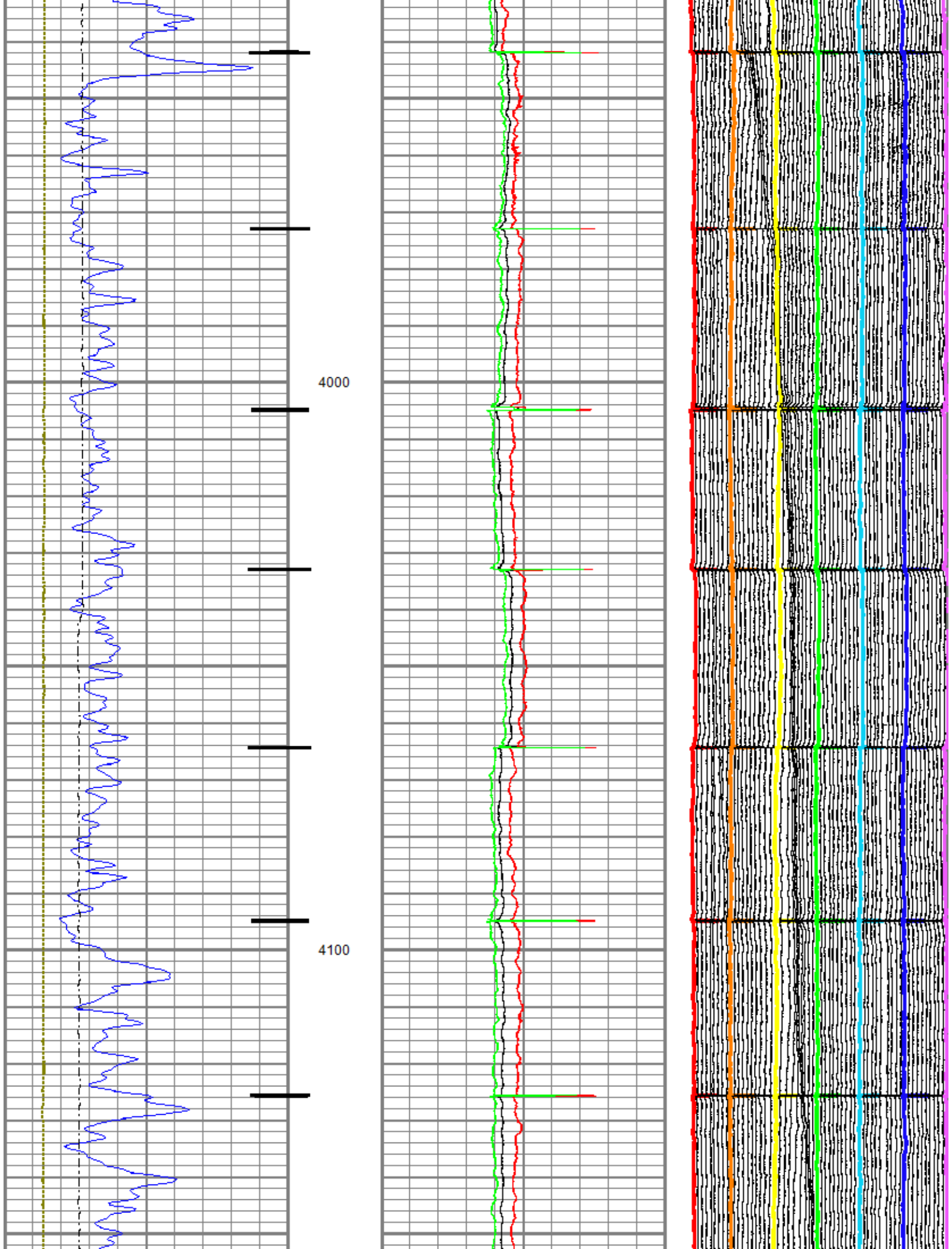
0	Gamma Ray (GAPI)	120
-100	Line Speed (ft/min)	100
-10	Deviation (*)	90
Casing Collar Locator		

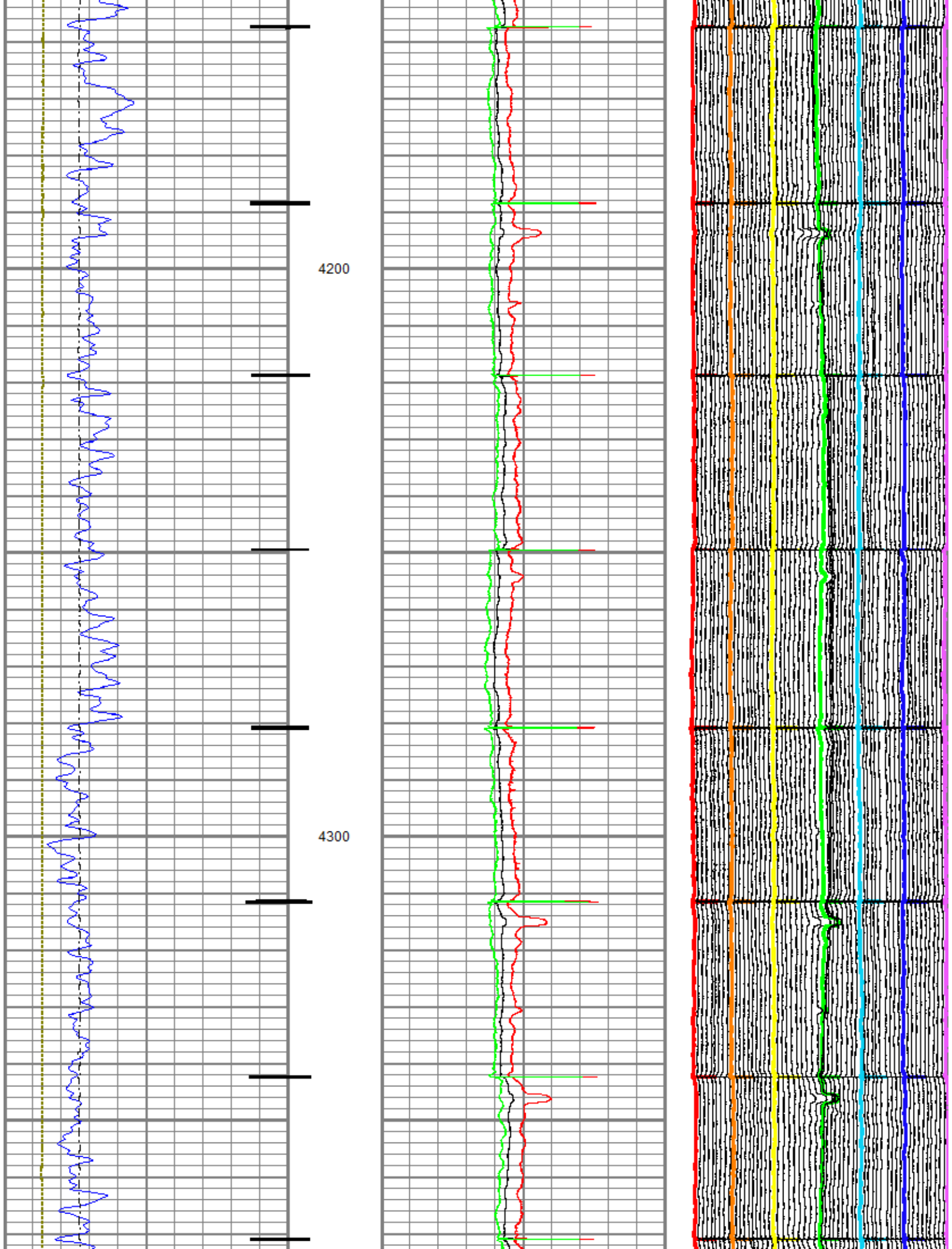
6	Average Diameter (in)	7
6	Maximum Diameter (in)	7
6	Minimum Diameter (in)	7

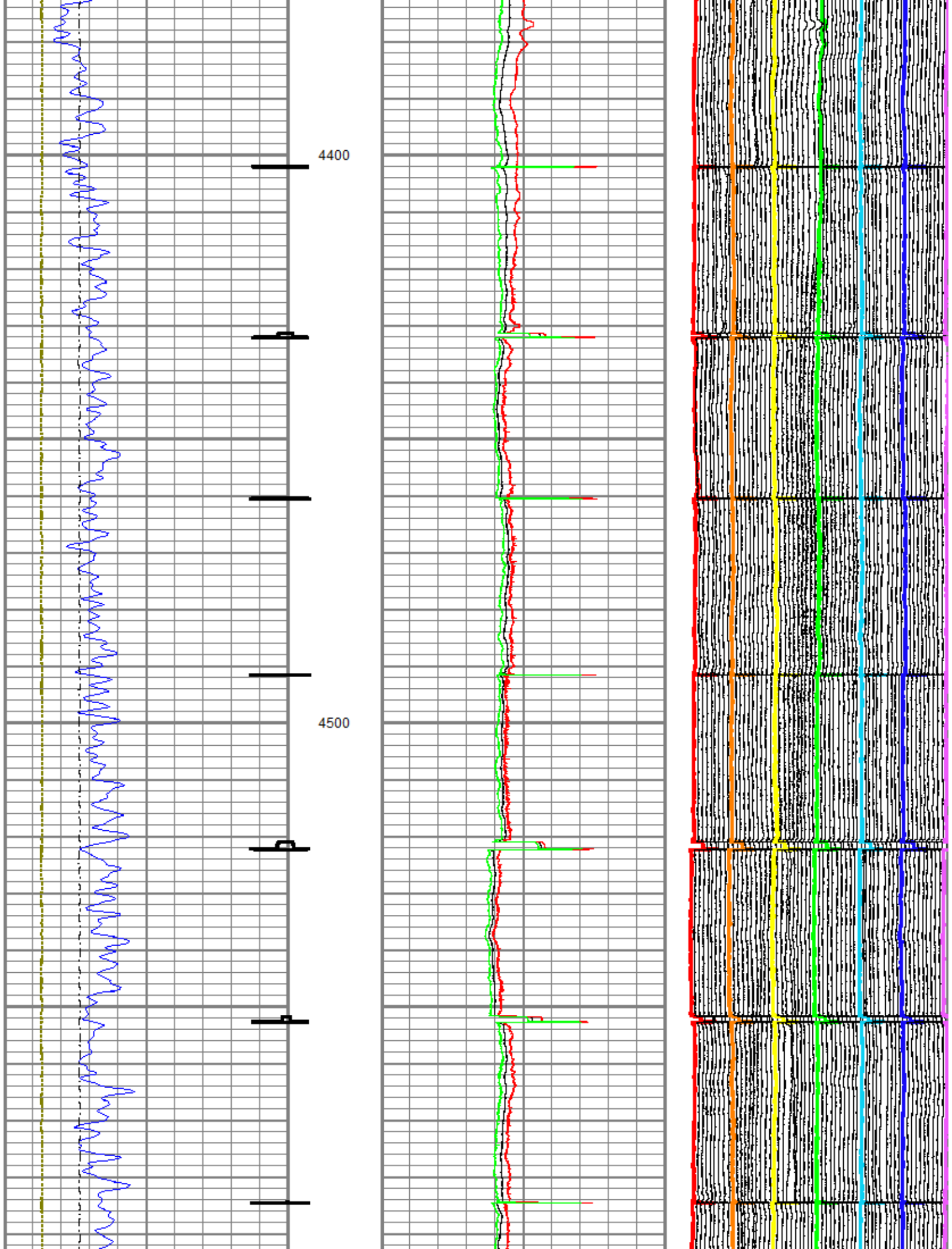
Caliper #1
Caliper #10
Caliper #20
Caliper #30
Caliper #40
Caliper #50
Caliper #60

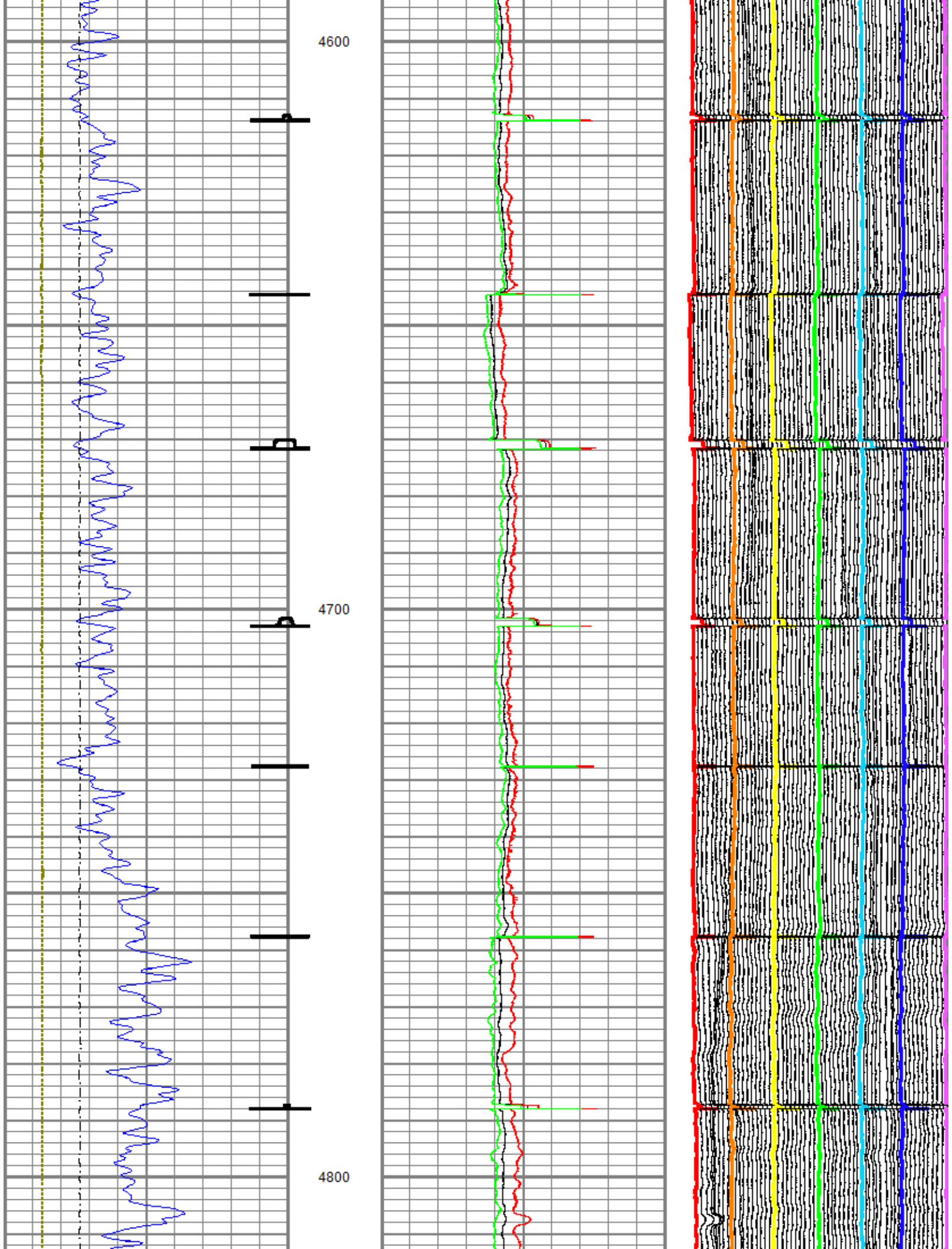


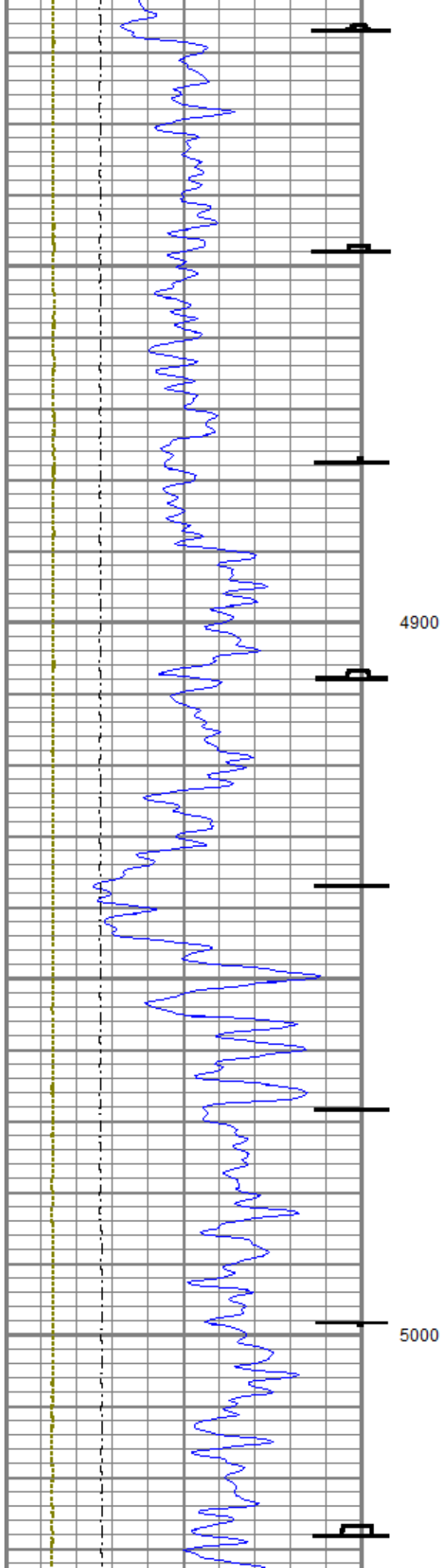
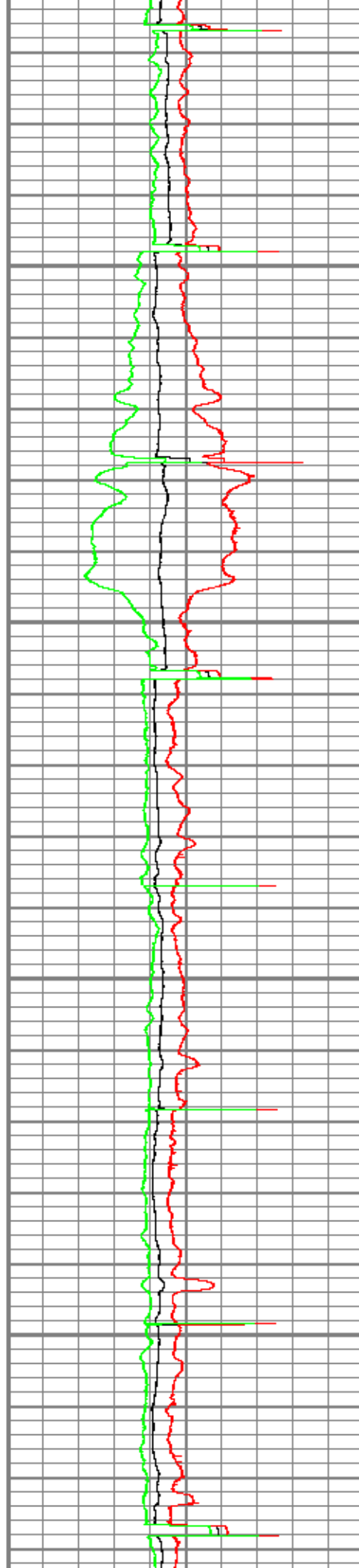
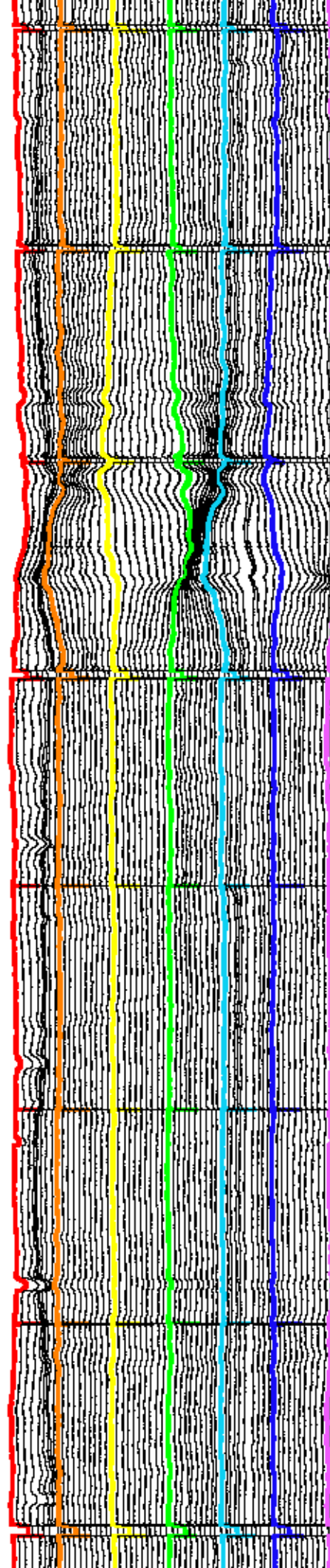


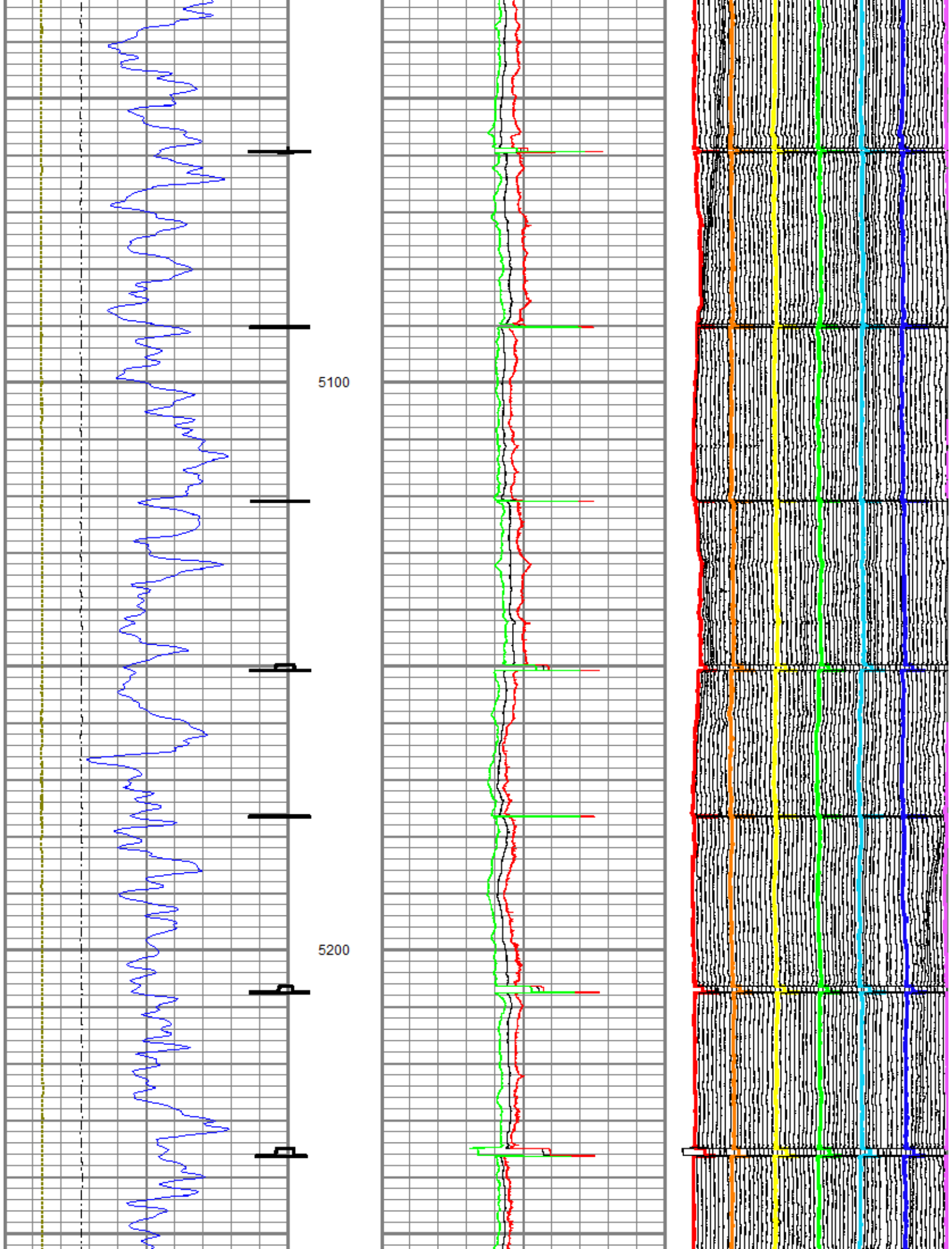


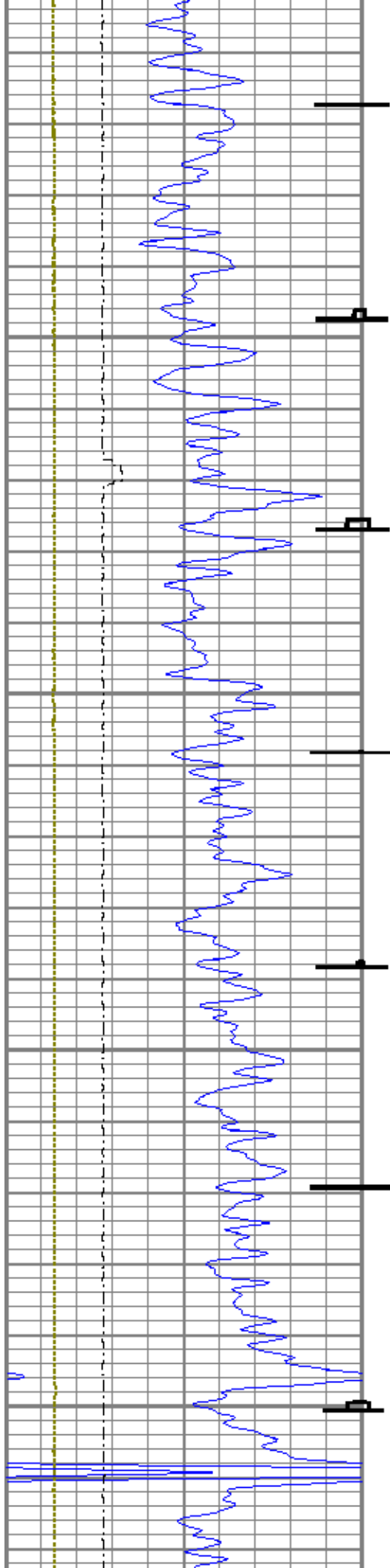






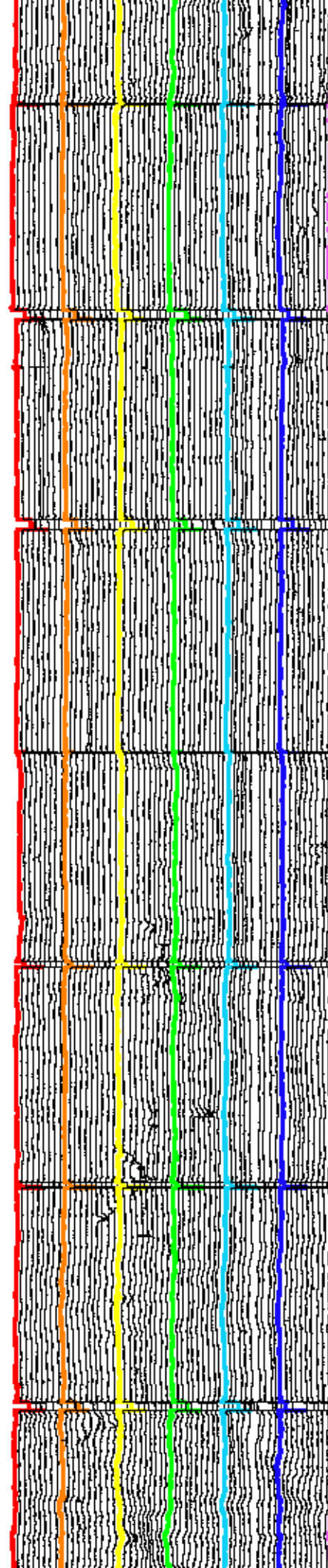
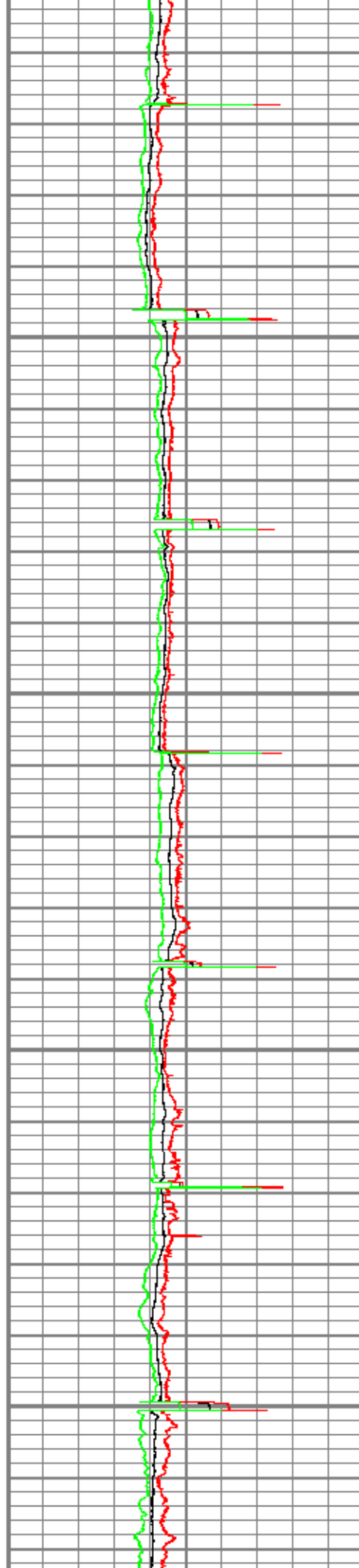


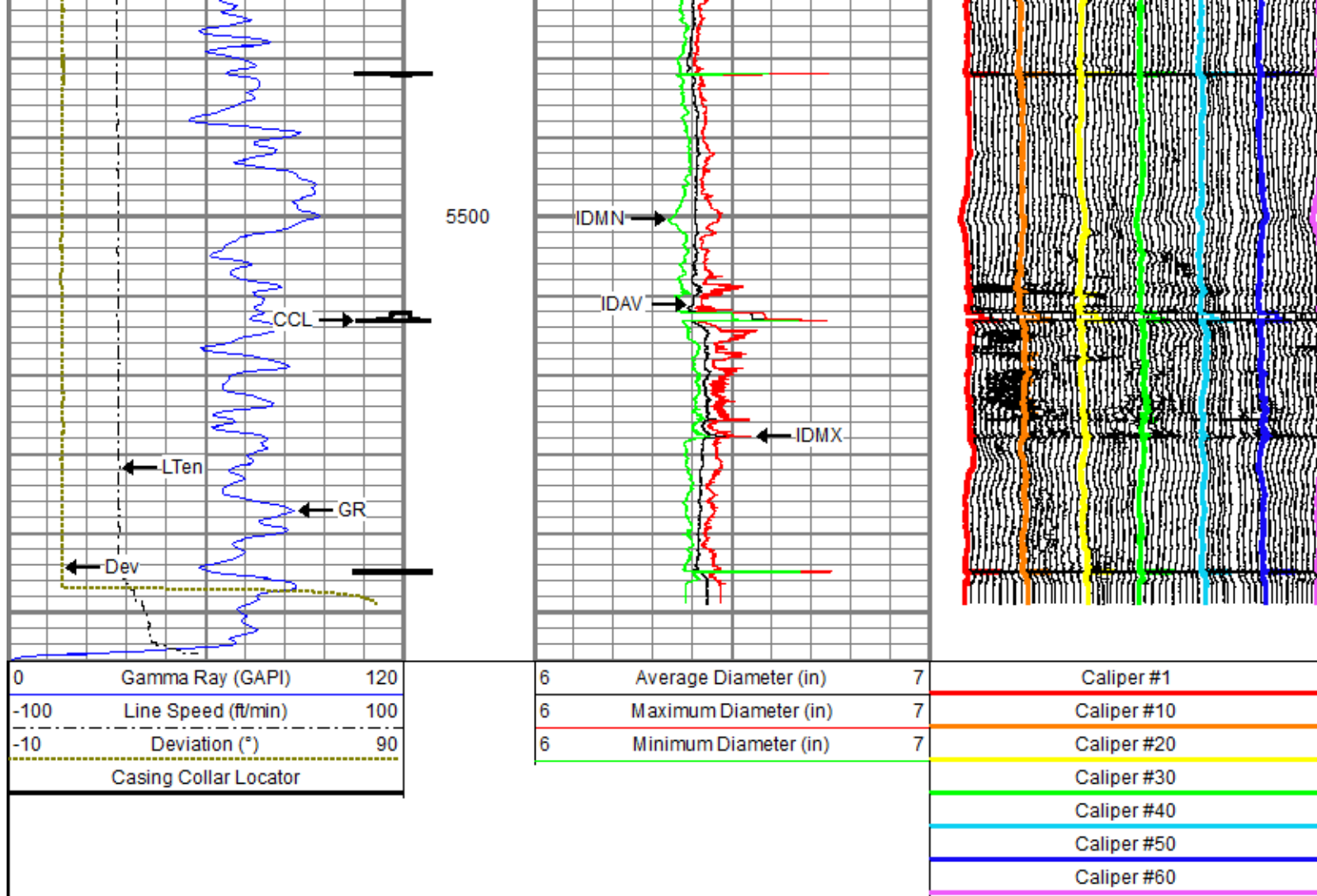




5300

5400



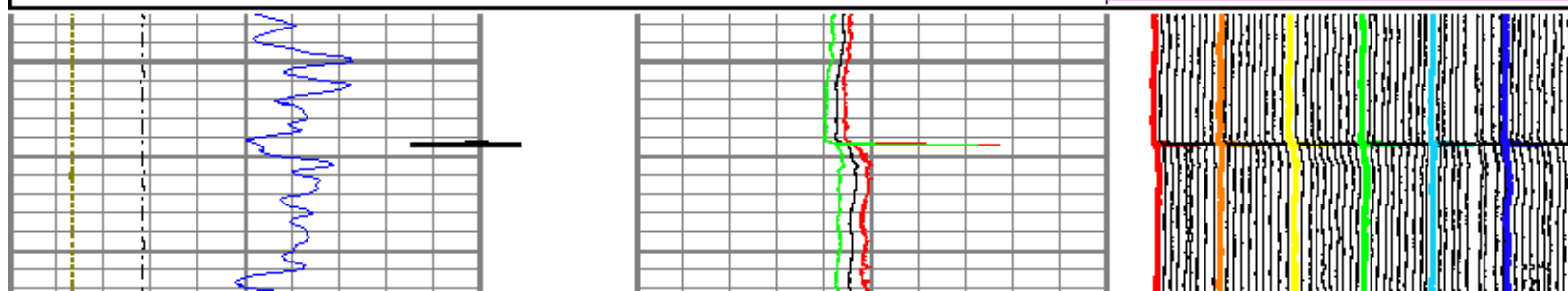
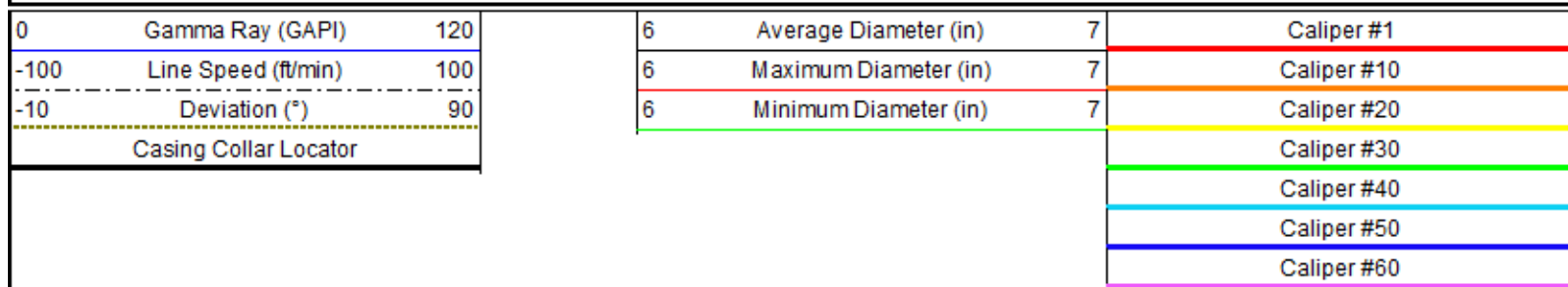


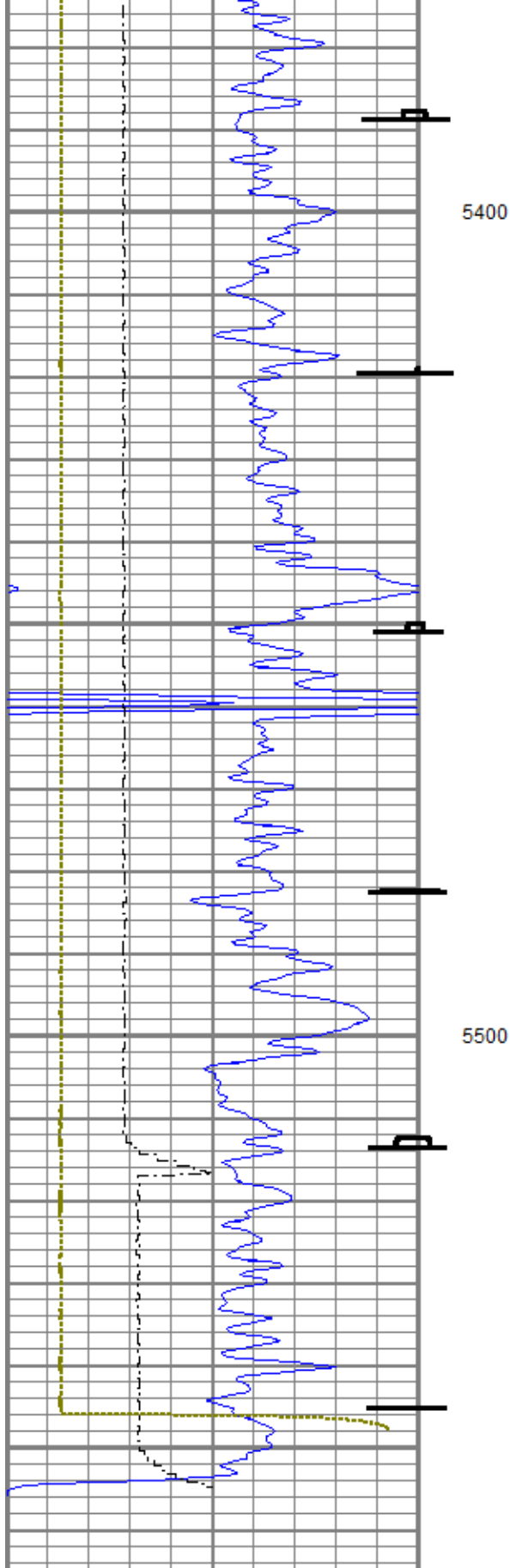
FMC Technologies

Repeat Pass

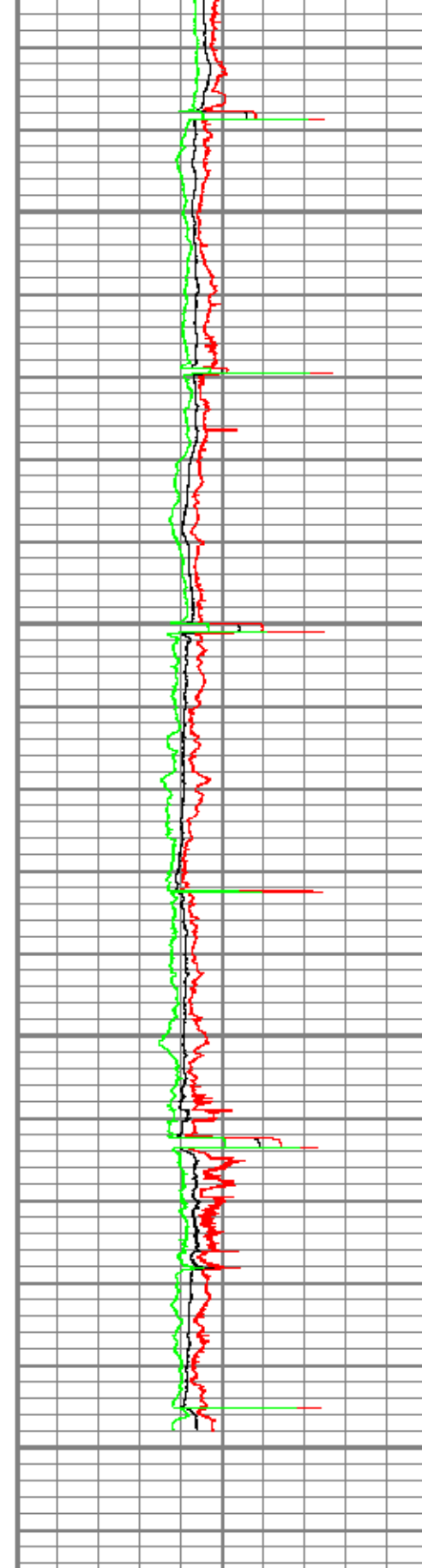
Logged With 0 PSI Well Head Pressure

Database File: 2015apr24_unopnpacivic929.db
 Dataset Pathname: downpass3
 Presentation Format: 70mit60x
 Dataset Creation: Fri Apr 24 11:09:33 2015 by Log 7.0 B1
 Charted by: Depth in Feet scaled 1:240

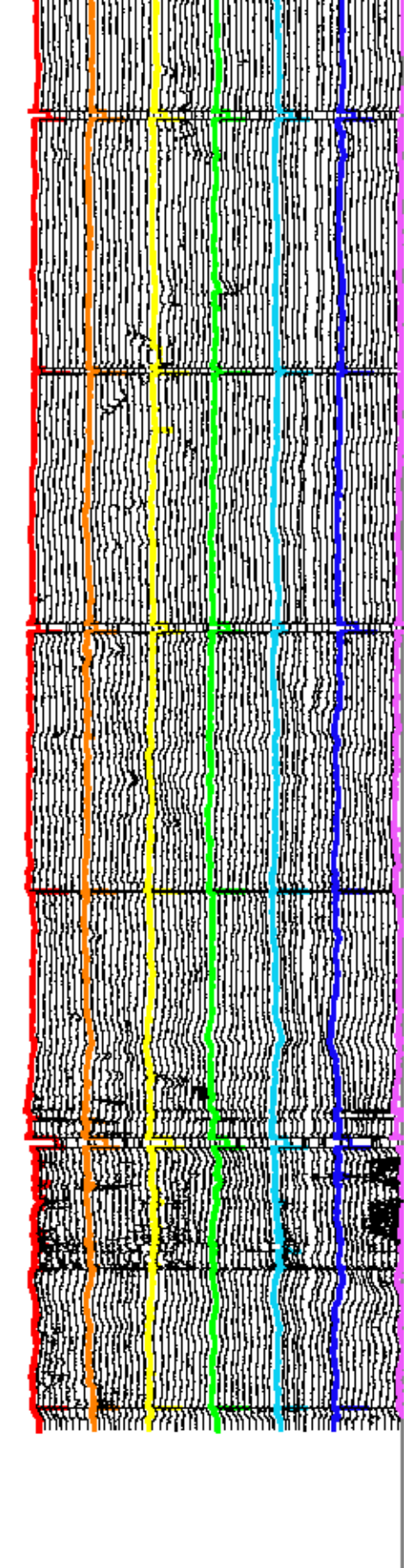




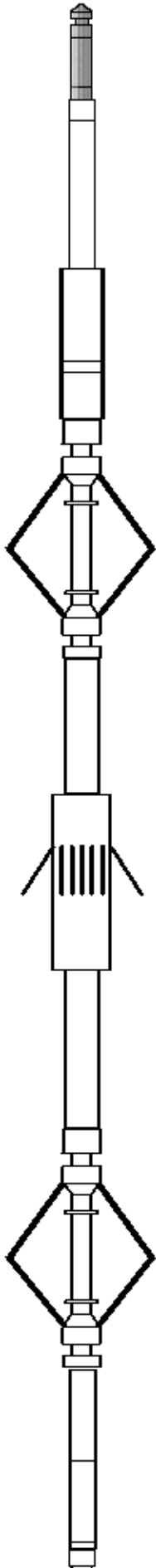
0	Gamma Ray (GAPI)	120
-100	Line Speed (ft/min)	100
-10	Deviation (°)	90
Casing Collar Locator		



6	Average Diameter (in)	7
6	Maximum Diameter (in)	7
6	Minimum Diameter (in)	7



Caliper #1
Caliper #10
Caliper #20
Caliper #30
Caliper #40
Caliper #50
Caliper #60

Sensor	Offset (ft)	Schematic	Description	Len (ft)	OD (in)	Wt (lb)
Titan_Electric	16.71		T_CH14375_1_GO Titan 1-7/16" Assembled Electric Cable Head with 1" Fishing Neck	1.03	1.44	4.00
UW_AGS	15.67		UW_AGS-UW_AGS_001 (10017430) Sondex Adapter - GO Box to Sondex Pin	0.21	1.69	1.00
			UW_XTU-UW_XTU_002 (10017430) Crossover Ultrawire Toolbus to Ultralink	1.58	1.69	6.50
CCL	12.85		UW_CCL-UW_CCL_028 (10026418) Ultrawire 3 1/8" Casing Collar Locator	1.61	3.13	15.00
DSS	12.27		DSS #3 -2-3/4" (RAC.20.087SX) DSS 2-3/4" 5 Arm Centralizer W/ Sondex Ends	2.55	2.75	
MIT	6.93		UW_MIT-UW_MIT60_029 (10018255) 60 Multifinger Imaging Tool	5.02	4.00	90.00
DSS	4.70		DSS #2 -2-3/4" (RAC.20.086SX) DSS 2-3/4" 5 Arm Centralizer W/ Sondex Ends	2.55	2.75	
GR	0.72		UW_PGR-UW_PGR_020 (10013902) Production Gamma Ray	1.93	1.69	9.50
UW_BUL	0.22		UW_BUL-UW_BUL_006 (219229) Sondex Ultrawire Bullnose Terminator	0.22	1.69	1.20
TSTAMP	0.00					
ITEMPX	0.00					
HVOLT	0.00					

Dataset: 2015apr24_unopnpacific929.db: field/well/run1/main
Total Length: 16.71 ft

Total Weight: 127.20 lb
O.D. 4.00 in



Company
Well
Field
County
State

Chevron USA Inc.
Union Pacific 9-29
Rangely
Rio Blanco
Colorado

Country USA