



Company		BAYSWATER		Company		BAYSWATER	
Well		MOJACK J-28HN		Well		MOJACK J-28HN	
Field		WATTENBURG		Field		WATTENBURG	
County		WELD		County		WELD	
State		COLORADO		State		COLORADO	
Location:		SHL. 230' FNL 1788' FEL		API # : 05-123-39824		Other Services	
Permanent Datum		GL		Elevation		4900'	
Log Measured From		KB 22'		Elevation		K.B. 4922'	
Drilling Measured From		KB		Elevation		D.F. 4921'	
Date		1/29/2015		Elevation		G.L. 4900'	
Run Number		ONE		Run Number		ONE	
Depth Driller		11650'		Depth Driller		11650'	
Depth Logger		7177'		Depth Logger		7177'	
Bottom Logged Interval		7168'		Bottom Logged Interval		7168'	
Top Log Interval		SURFACE		Top Log Interval		SURFACE	
Open Hole Size		8.75		Open Hole Size		8.75	
Type Fluid		WATER		Type Fluid		WATER	
Density / Viscosity		1		Density / Viscosity		1	
Max. Recorded Temp.		233 DEG F		Max. Recorded Temp.		233 DEG F	
Estimated Cement Top		16'		Estimated Cement Top		16'	
Time Well Ready		N/A		Time Well Ready		N/A	
Time Logger on Bottom		N/A		Time Logger on Bottom		N/A	
Equipment Number		4740		Equipment Number		4740	
Location		GREELEY		Location		GREELEY	
Recorded By		N.POLLOCK		Recorded By		N.POLLOCK	
Witnessed By		J.FREED		Witnessed By		J.FREED	
Borehole Record		Tubing Record		Borehole Record		Tubing Record	
Run Number		Bit		Run Number		Bit	
From		To		From		To	
Size		Weight		Size		Weight	
From		To		From		To	
Casing Record		Size		Casing Record		Size	
Surface String		9 5/8"		Surface String		9 5/8"	
Prot. String		7"		Prot. String		7"	
Production String		4 1/2"		Production String		4 1/2"	
Liner		11 6#		Liner		11 6#	

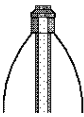
<<< Fold Here >>>

All interpretations are opinions based on inferences from electrical or other measurements and we cannot and do not guarantee the accuracy or correctness of any interpretation, and we shall not, except in the case of gross or willful negligence on our part, be liable or responsible for any loss, costs, damages, or expenses incurred or sustained by anyone resulting from any interpretation made by any of our officers, agents or employees. These interpretations are also subject to our general terms and conditions set out in our current Price Schedule.

Comments

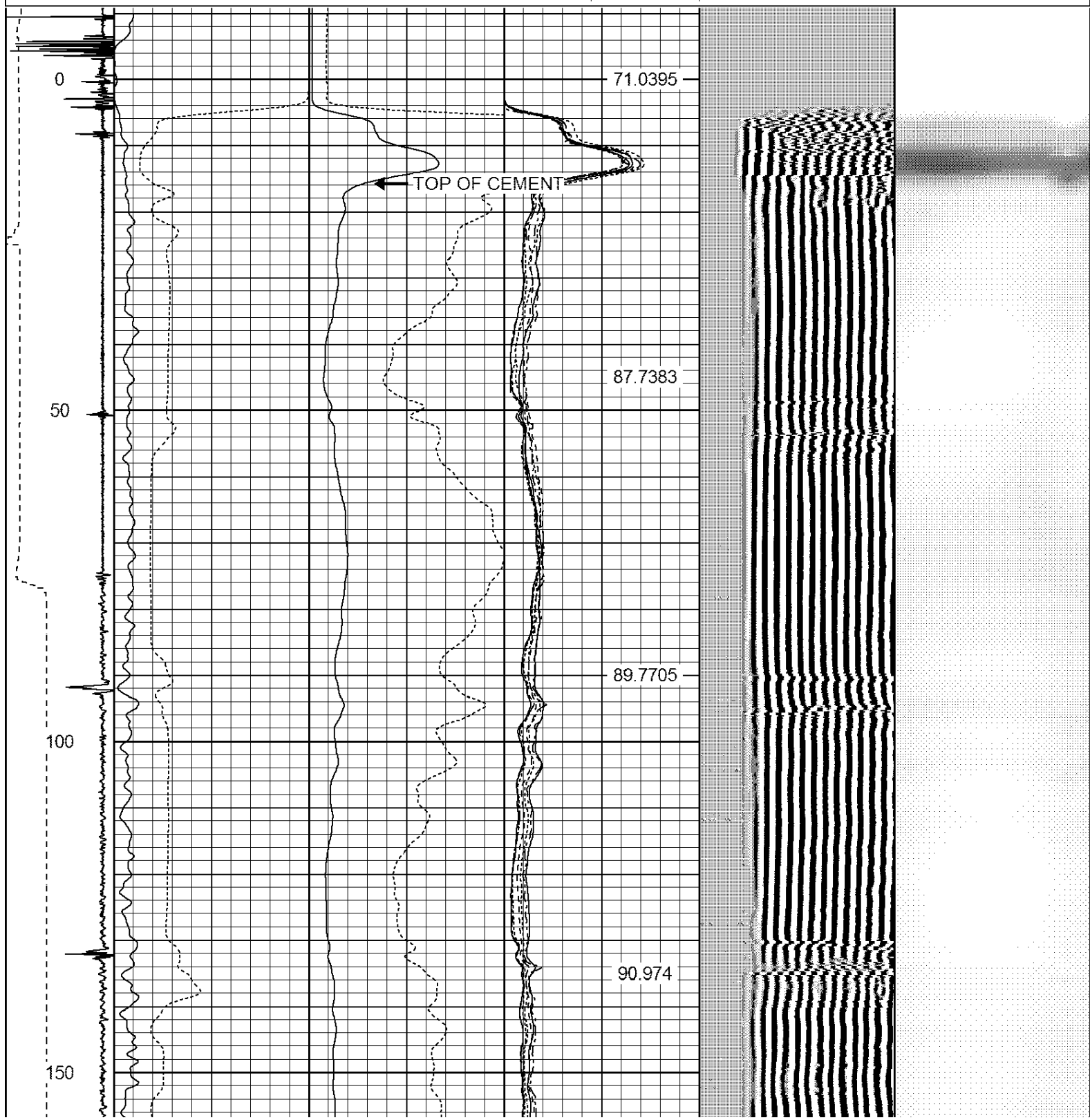
CORRELATED TO LINER TOP  
CBL RAN UNDER 1000 POUNDS OF PRESSURE

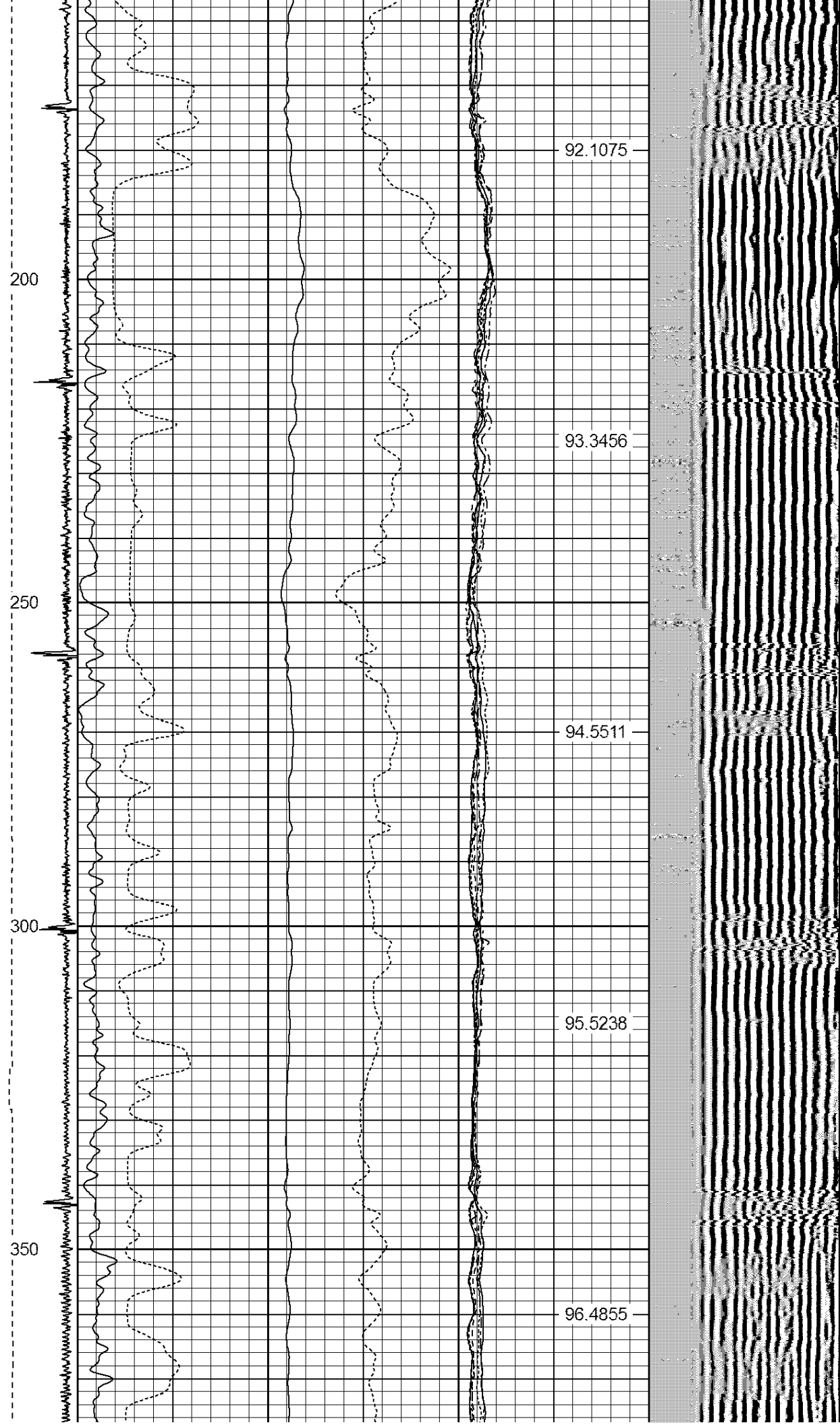
THANK YOU FOR USING WARRIOR!

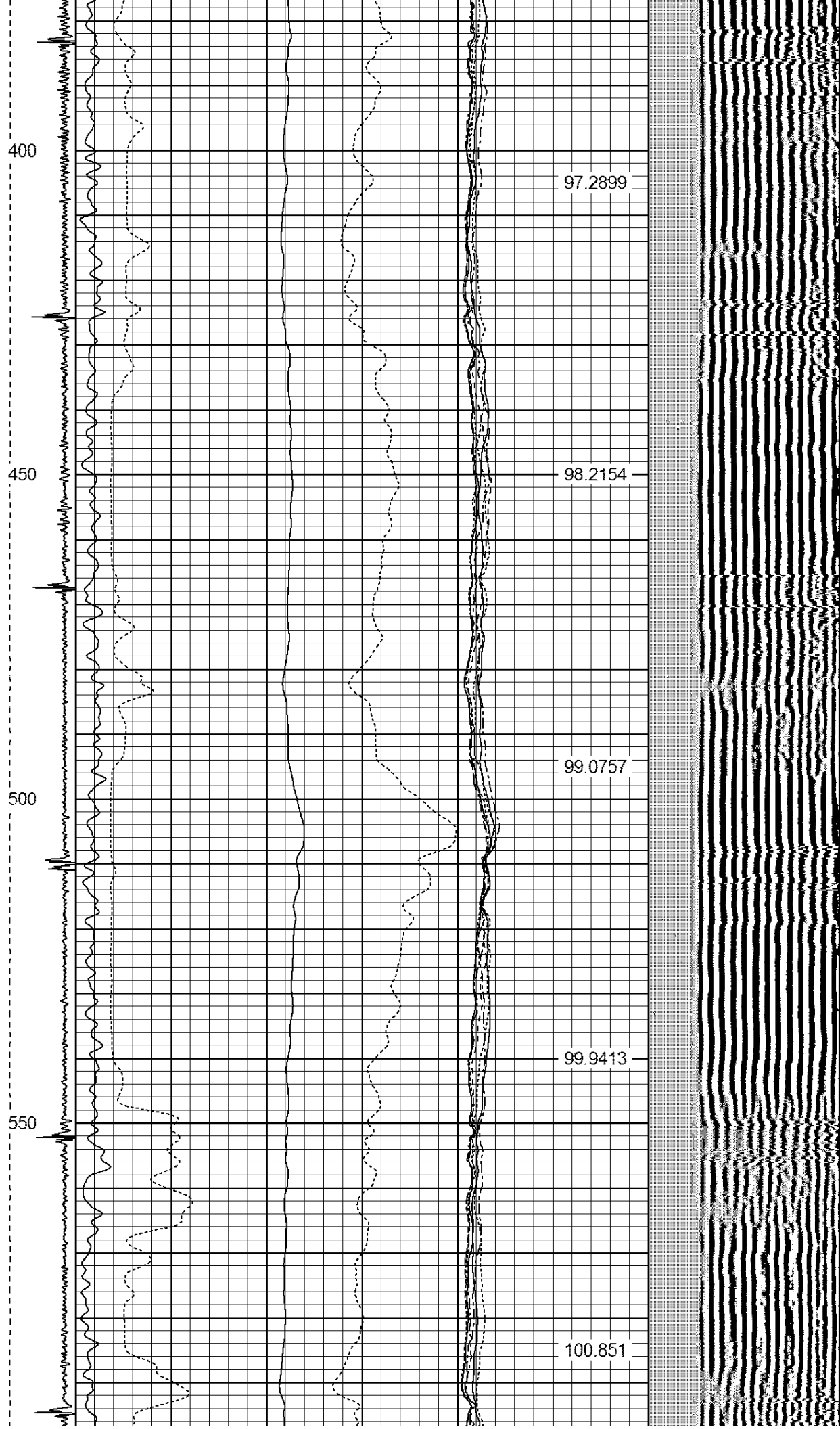
Sensor	Offset (ft)	Schematic	Description	Len (ft)	OD (in)	Wt (lb)
						

[illegible]

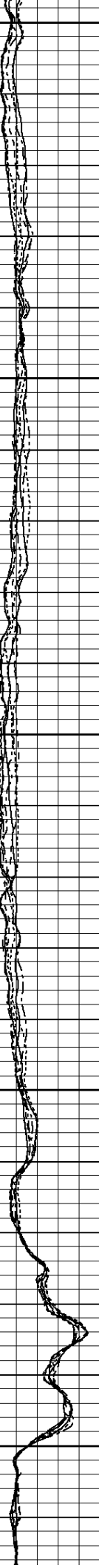
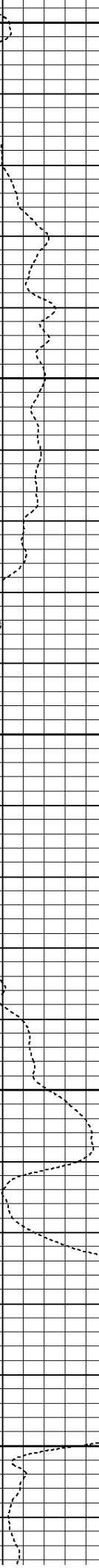
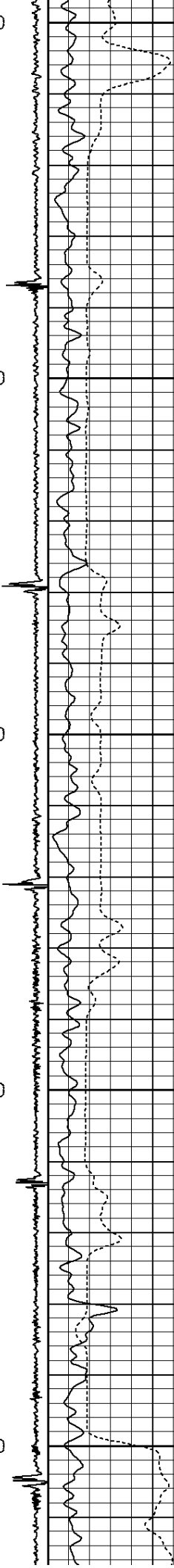
-9	CCL	1	200	TT (usec)	1000	0	AMP (mV)	100	0	AMPS1	100	200	VDL	1200	1	Cement Map	8
LSPD			0	GR (GAPI)	200	0	AMPx5 (mV)	20	0	AMPS2	100				1		100
(ft/min)			200	GR (GAPI)	400				0	AMPS4	100						
0	250								0	AMPS5	100						
									0	AMPS6	100						
									0	AMPS7	100						
									0	AMPS8	100						
										IntTemp							
										(degF)							







600  
650  
700  
750  
800



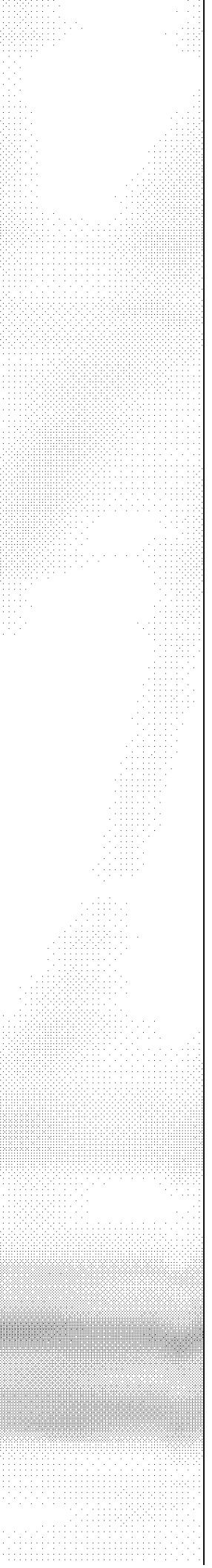
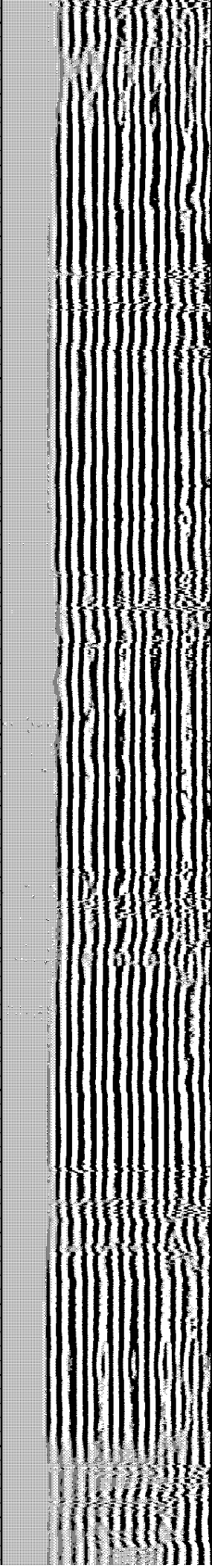
101.715

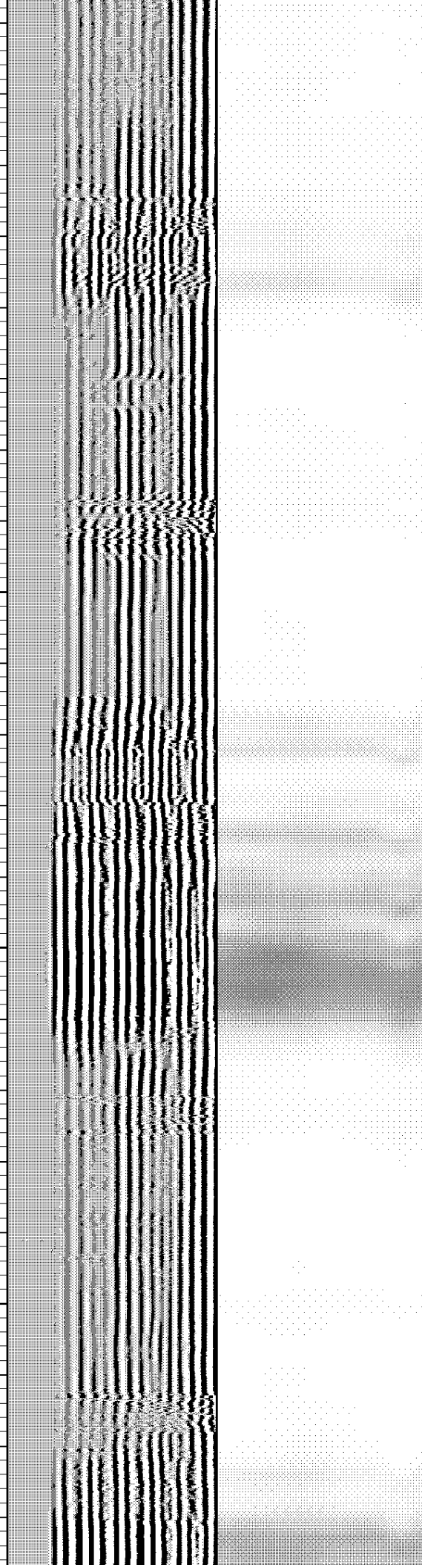
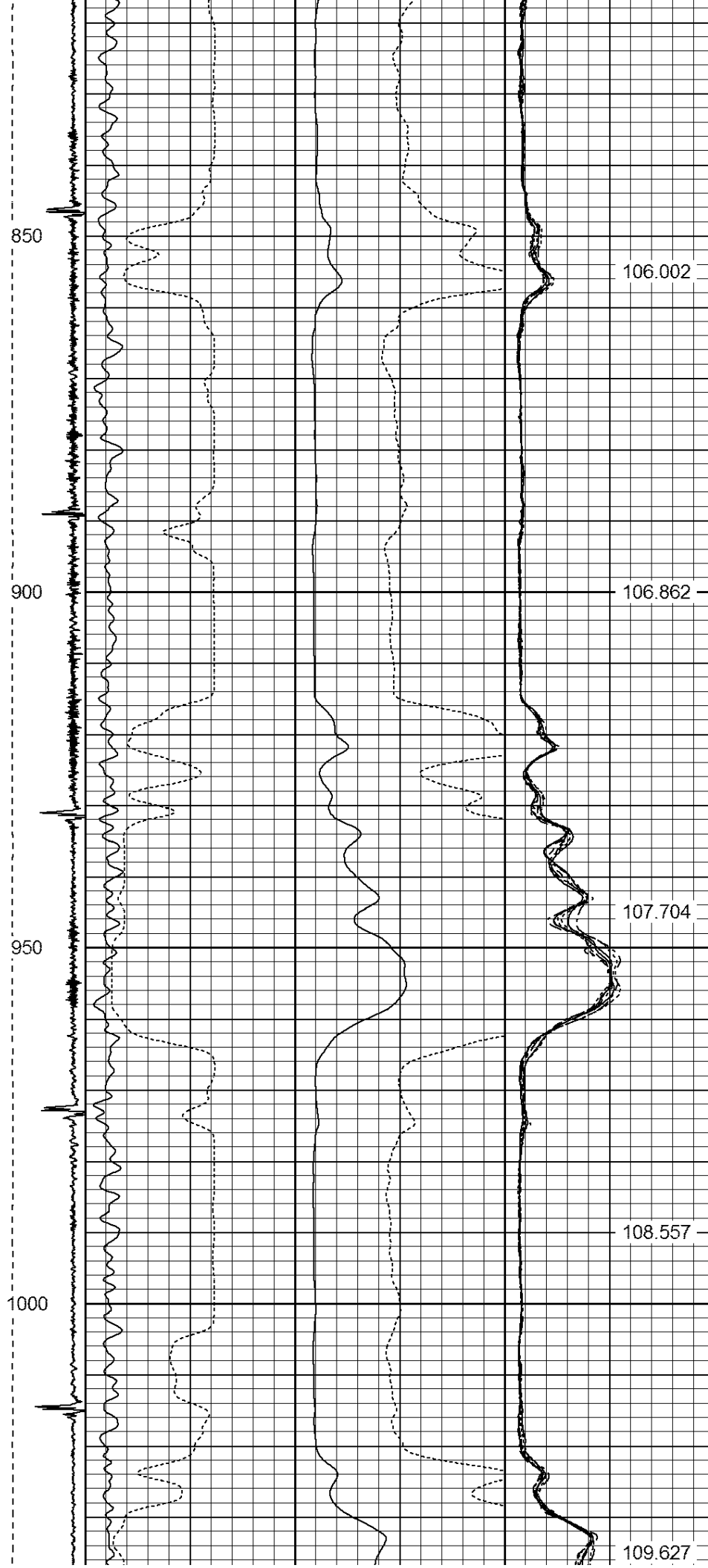
102.608

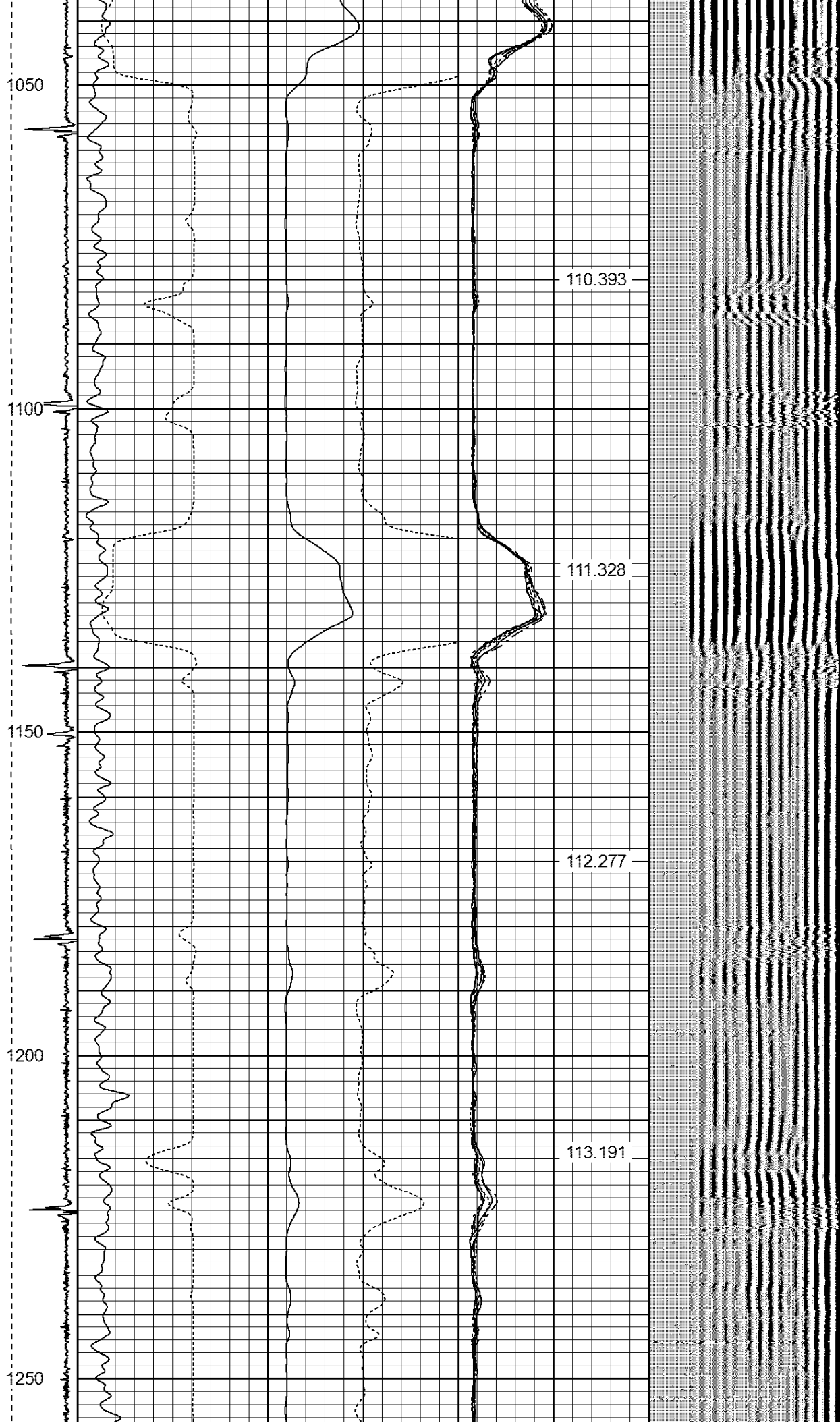
103.412

104.213

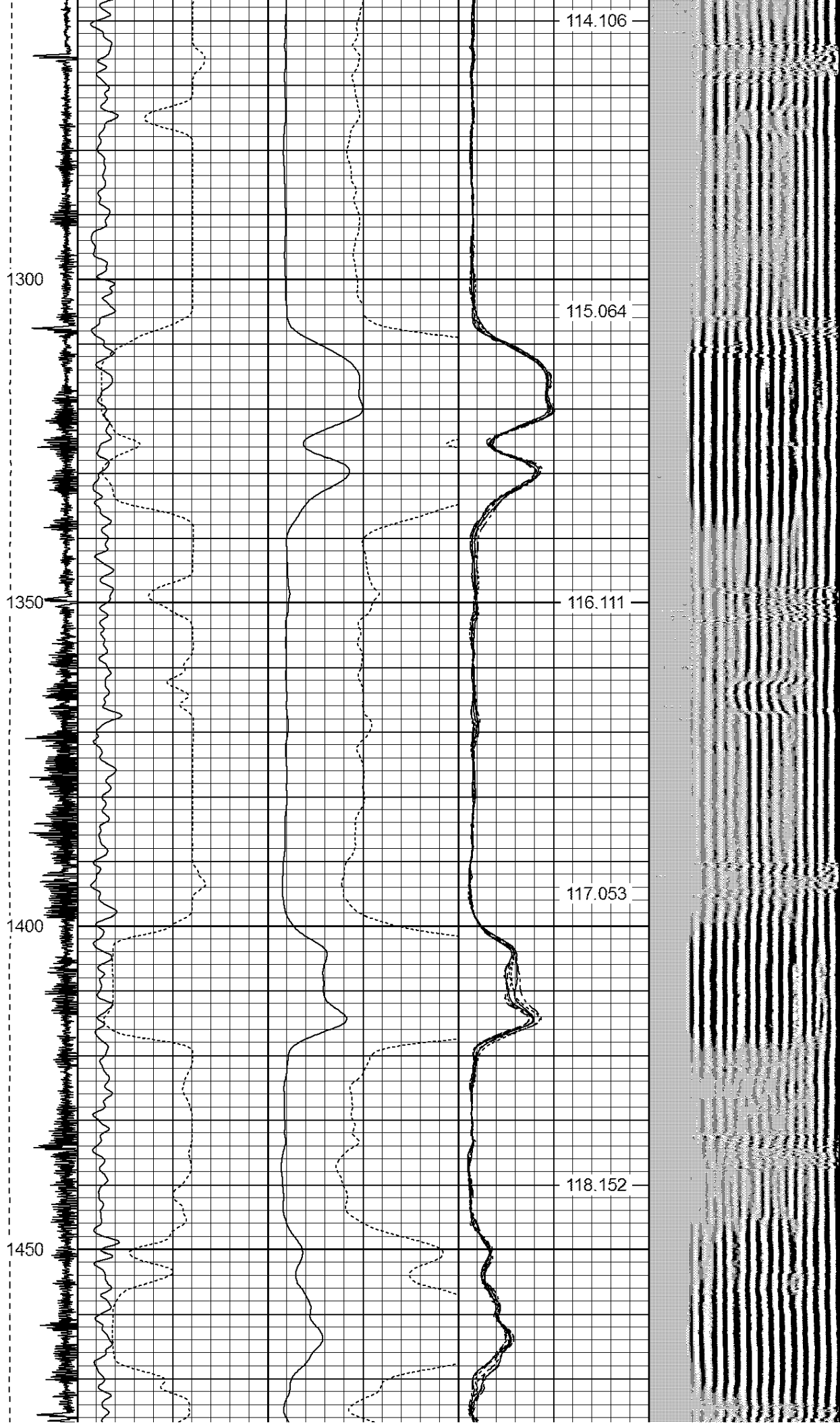
105.122

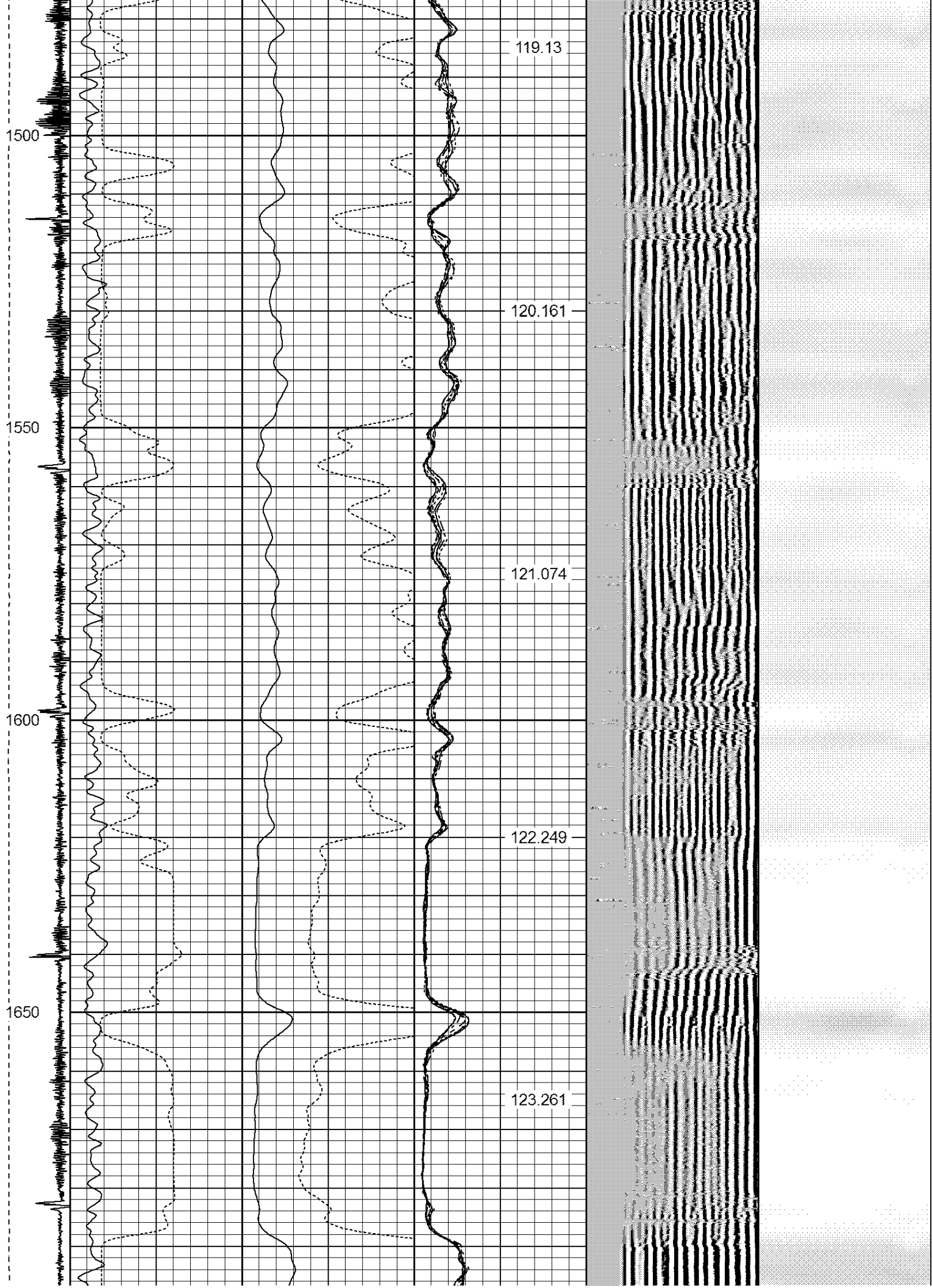












1700  
1750  
1800  
1850  
1900

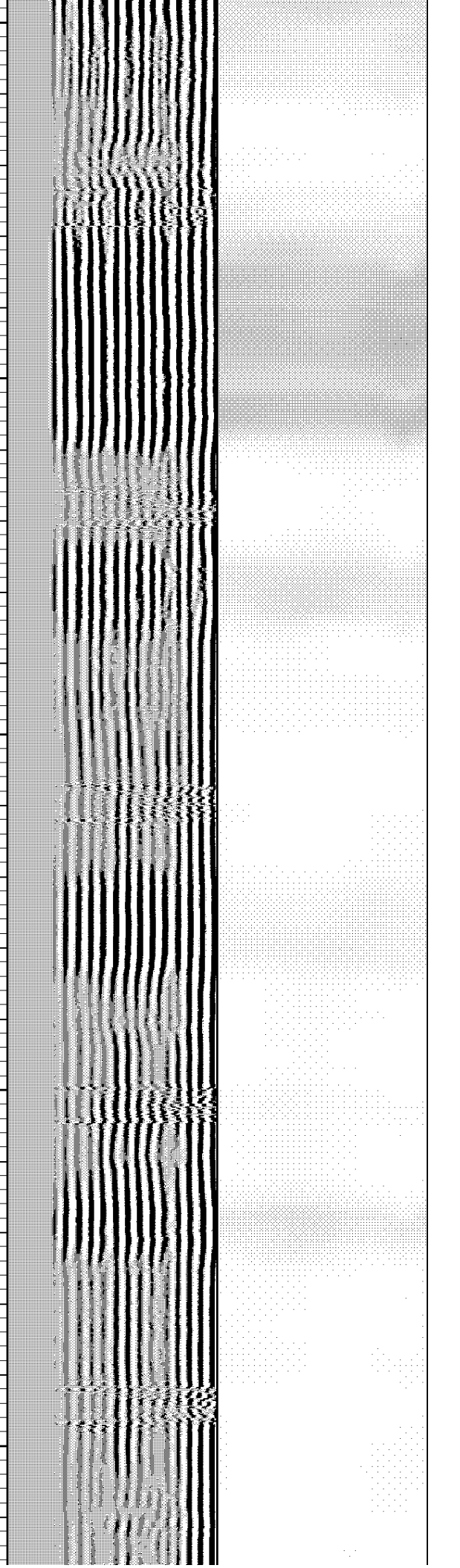
124.355

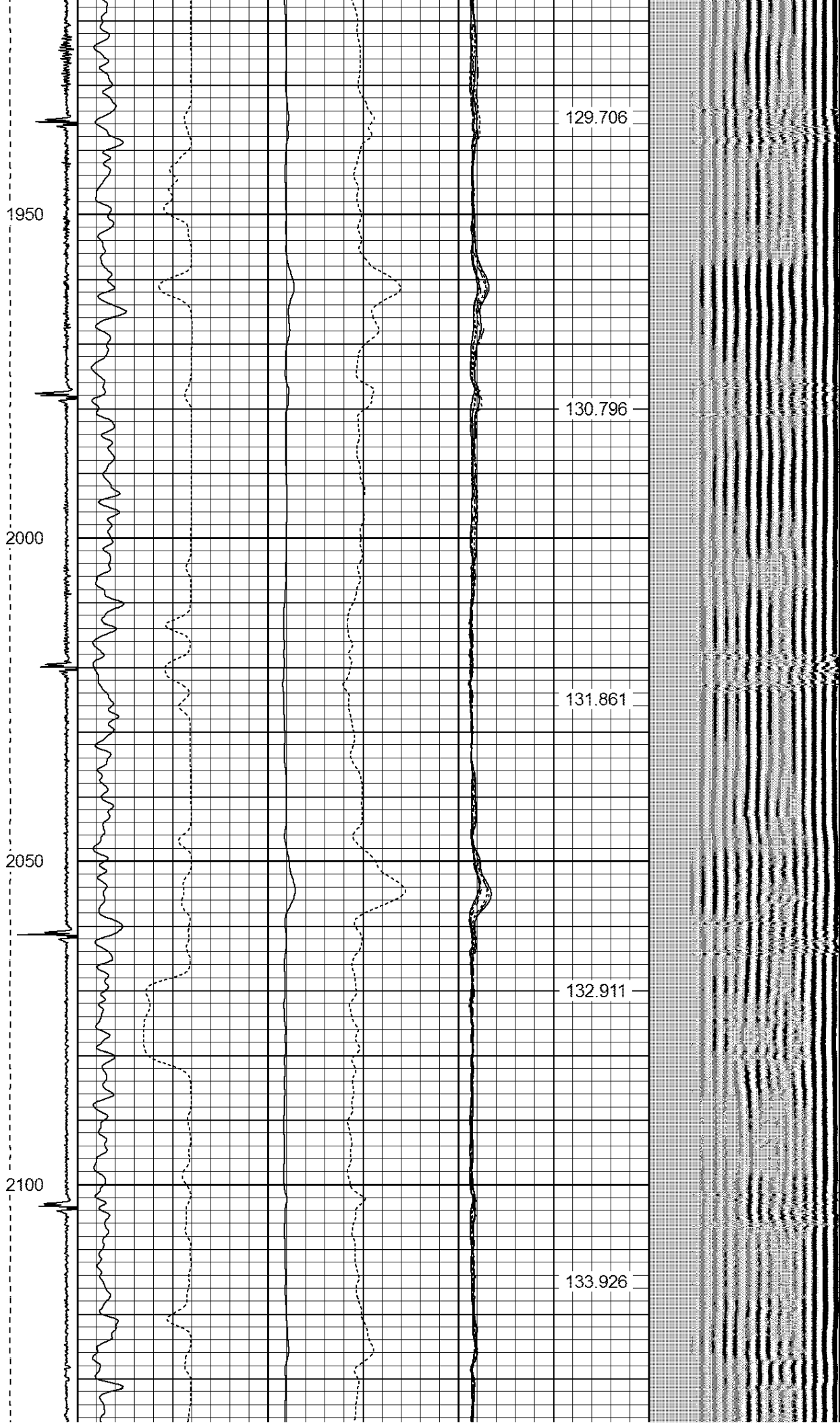
125.421

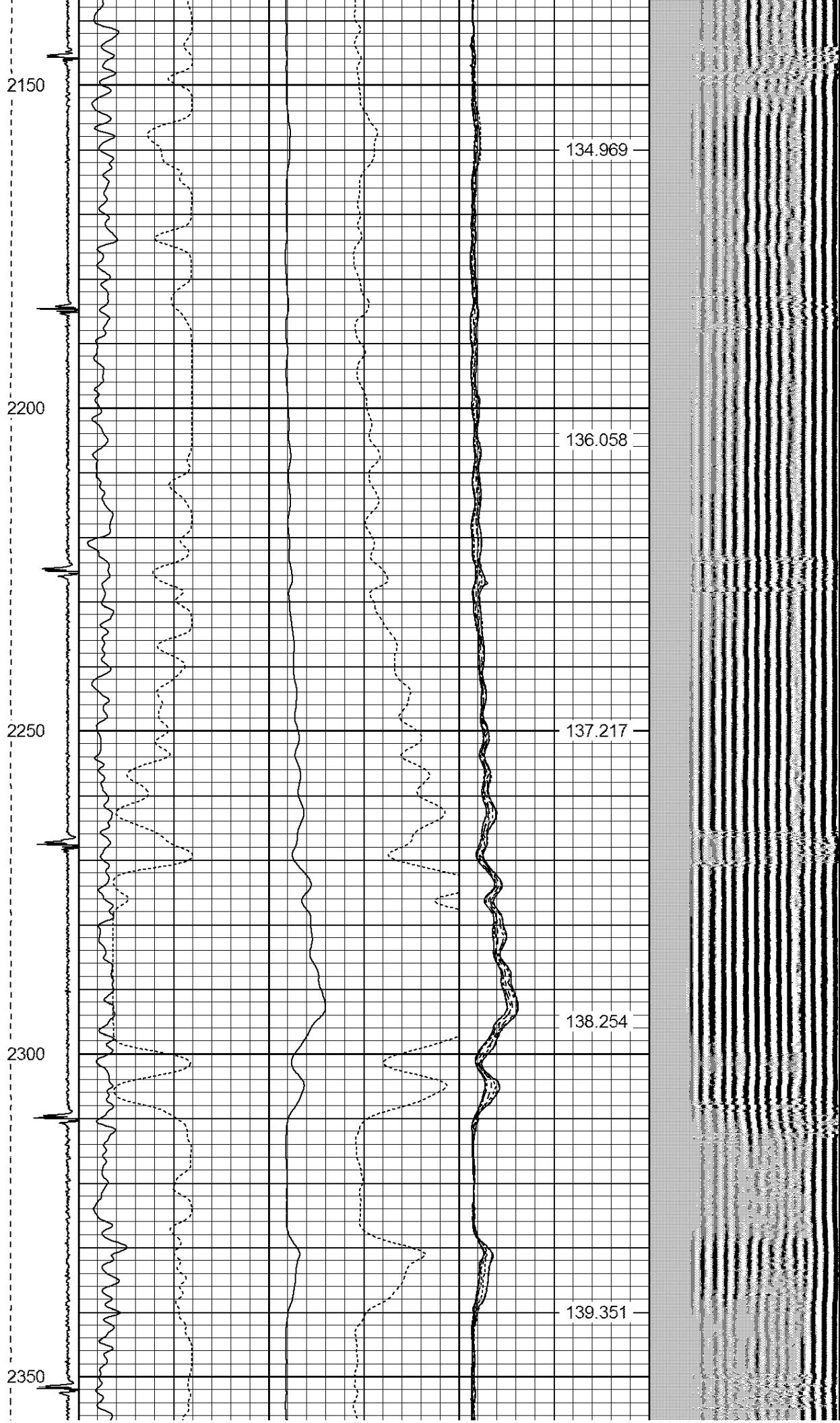
126.458

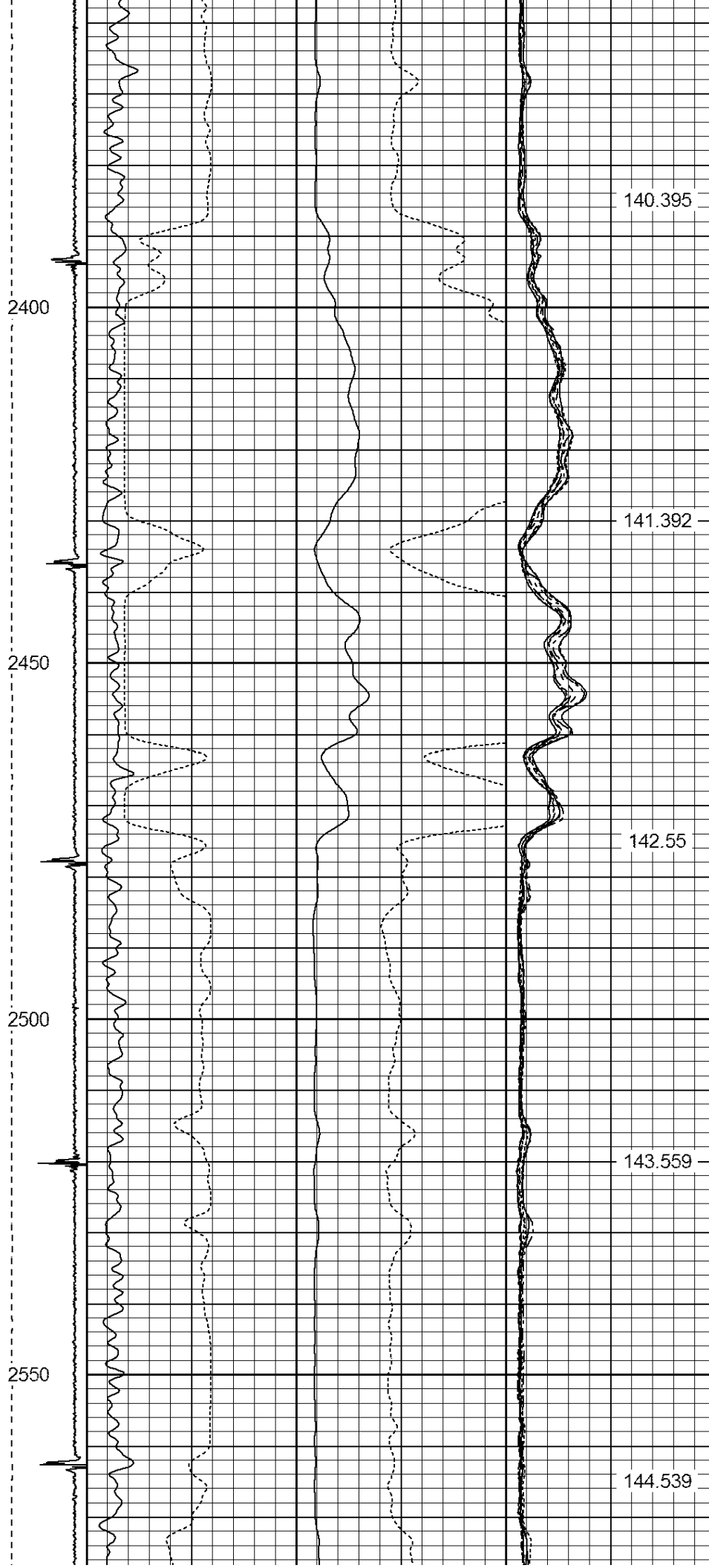
127.559

128.728











2600

2650

2700

2750

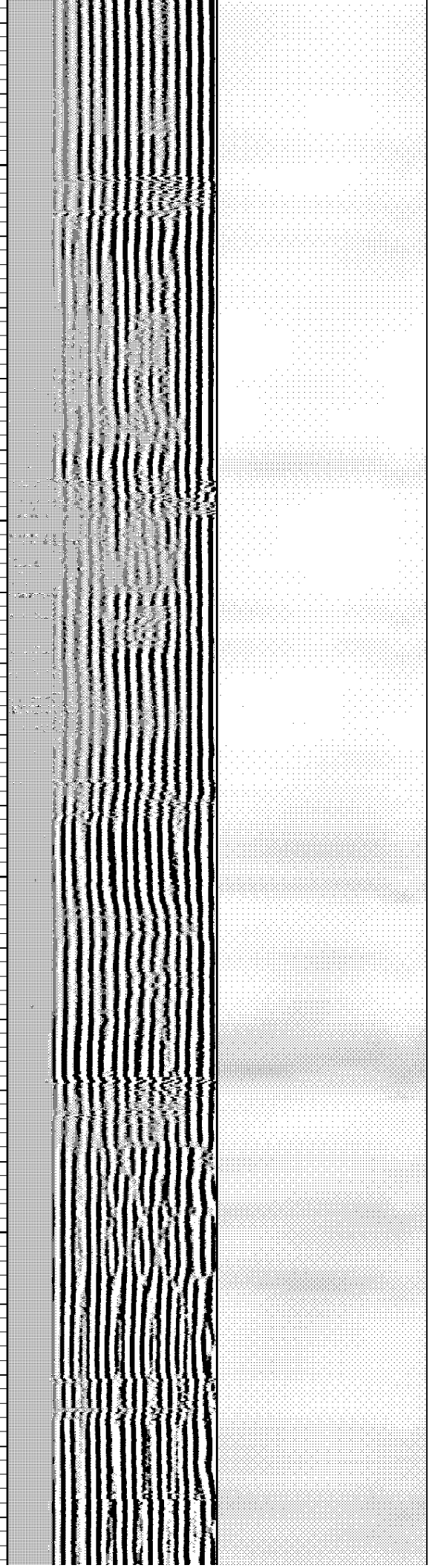
145.61

146.639

147.63

148.614

149.621



2800

2850

2900

2950

3000

150.602

151.48

152.494

153.516

154.586



3050

3100

3150

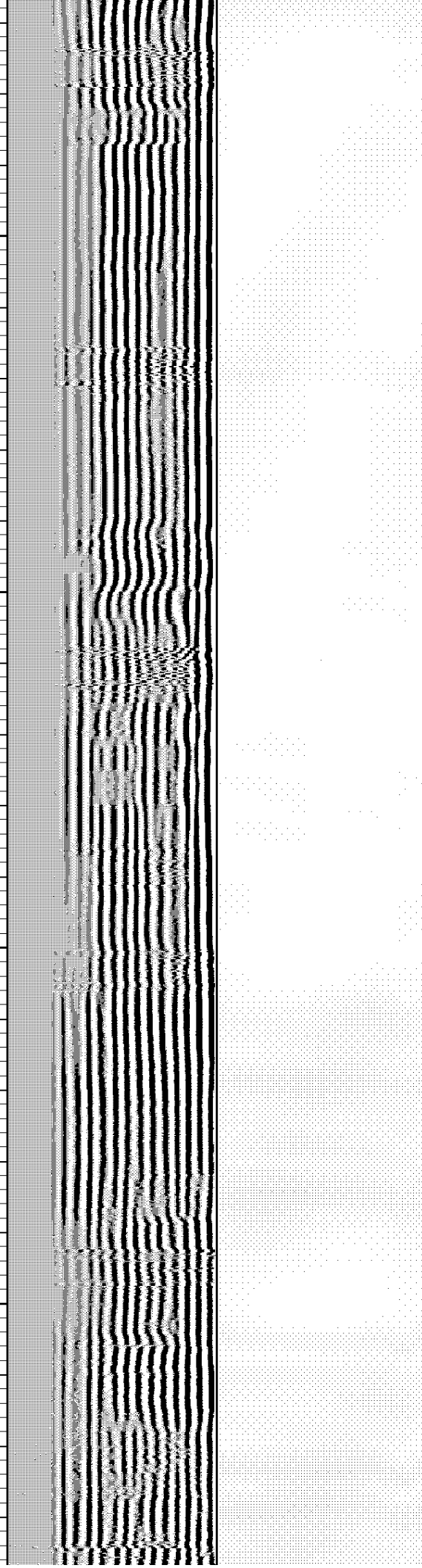
3200

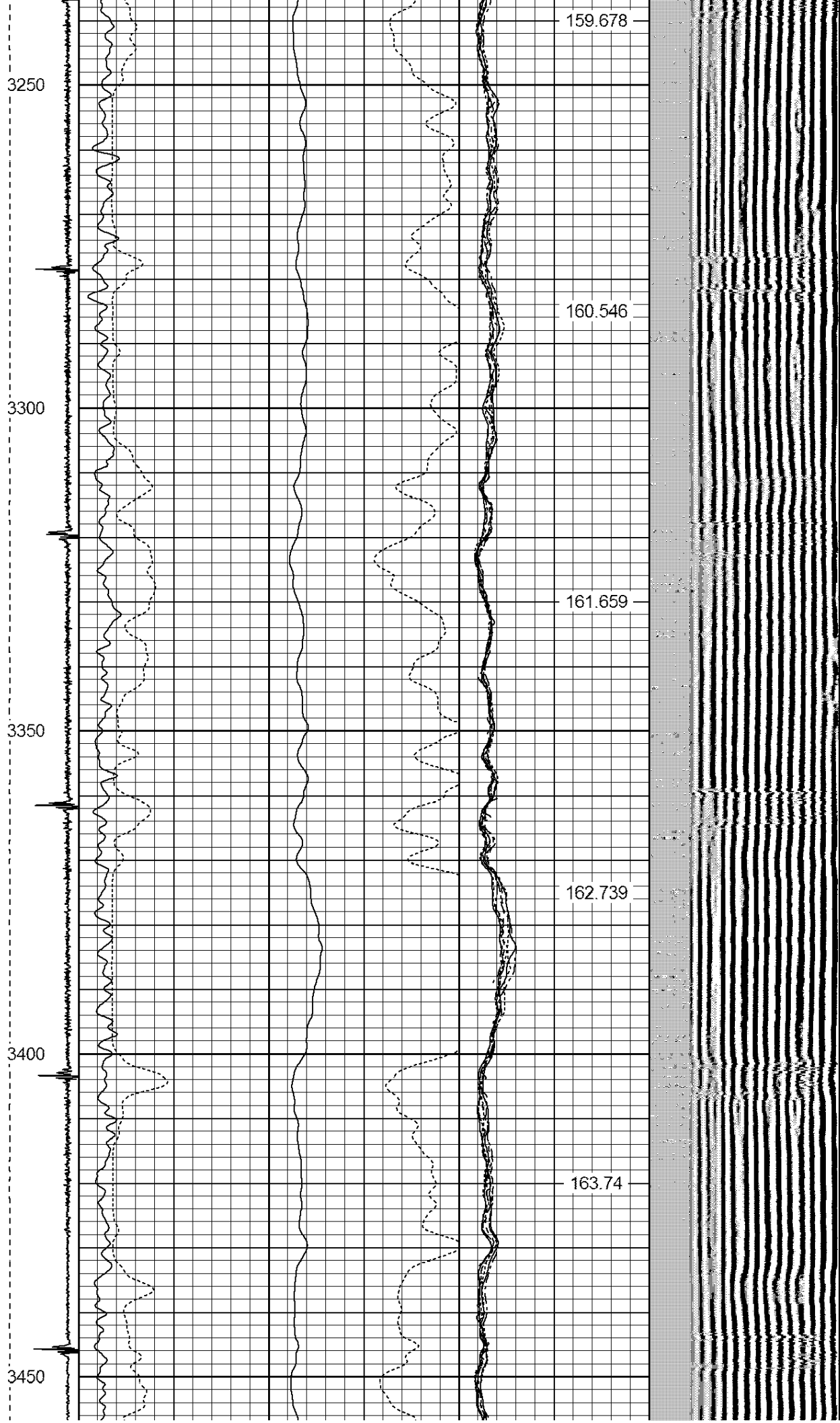
155.49

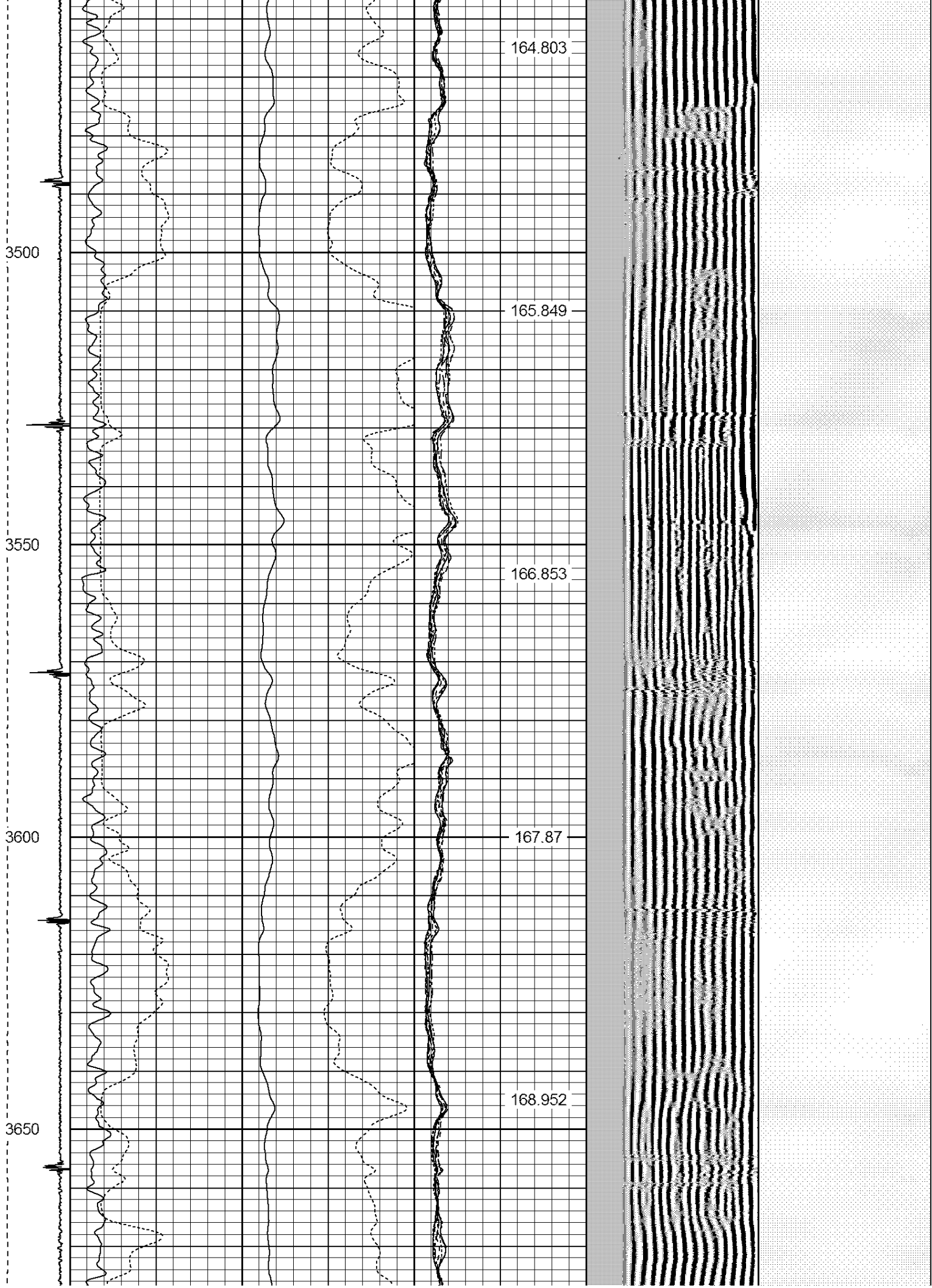
156.623

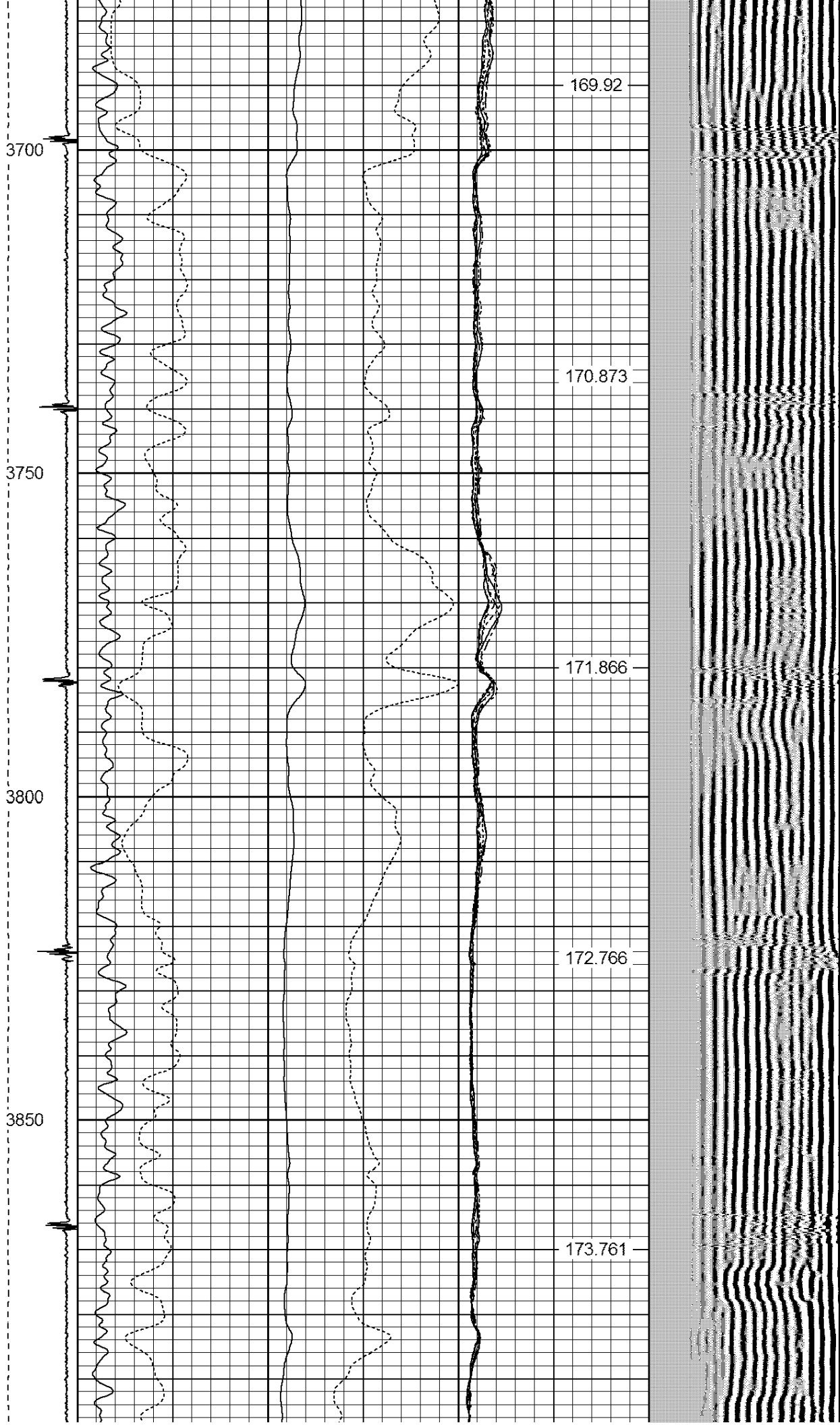
157.559

158.615









3900

3950

4000

4050

4100

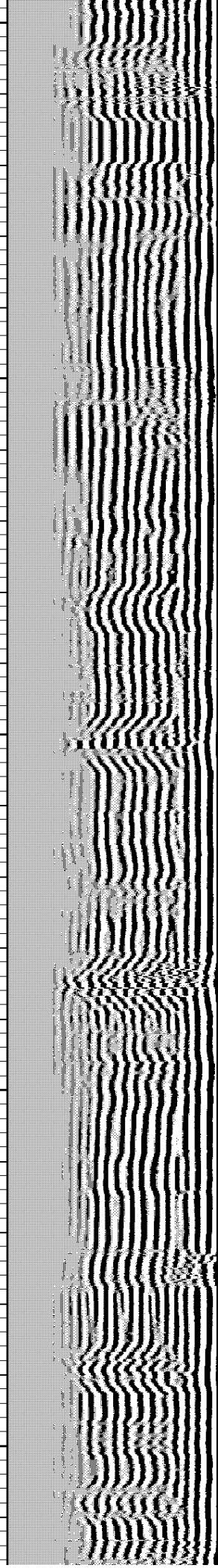
174.592

175.533

176.489

177.404

178.362



4150

4200

4250

4300

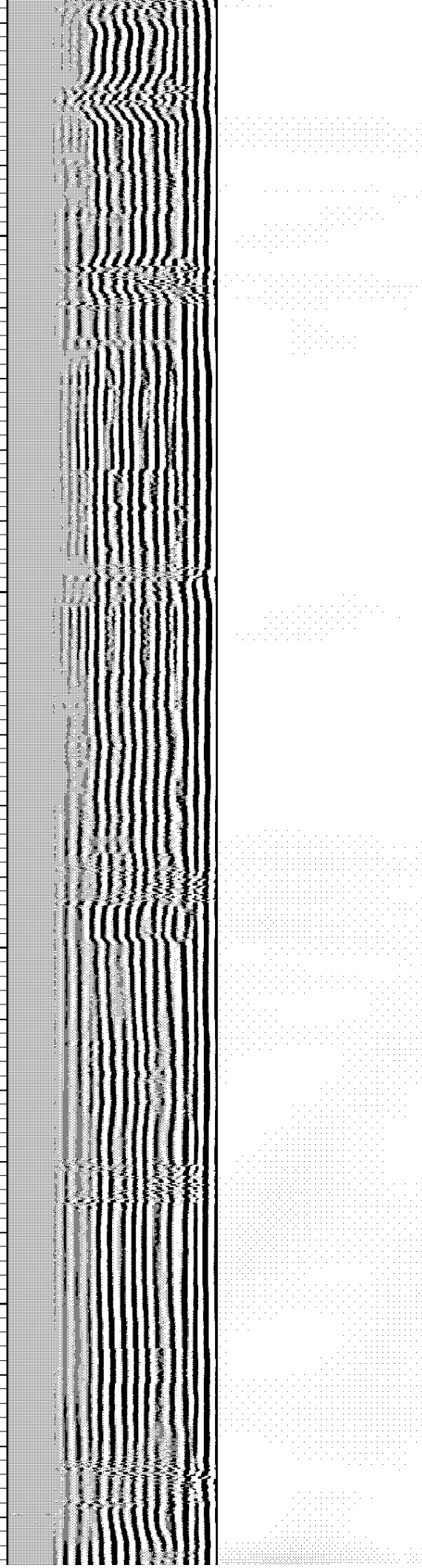
179.251

180.325

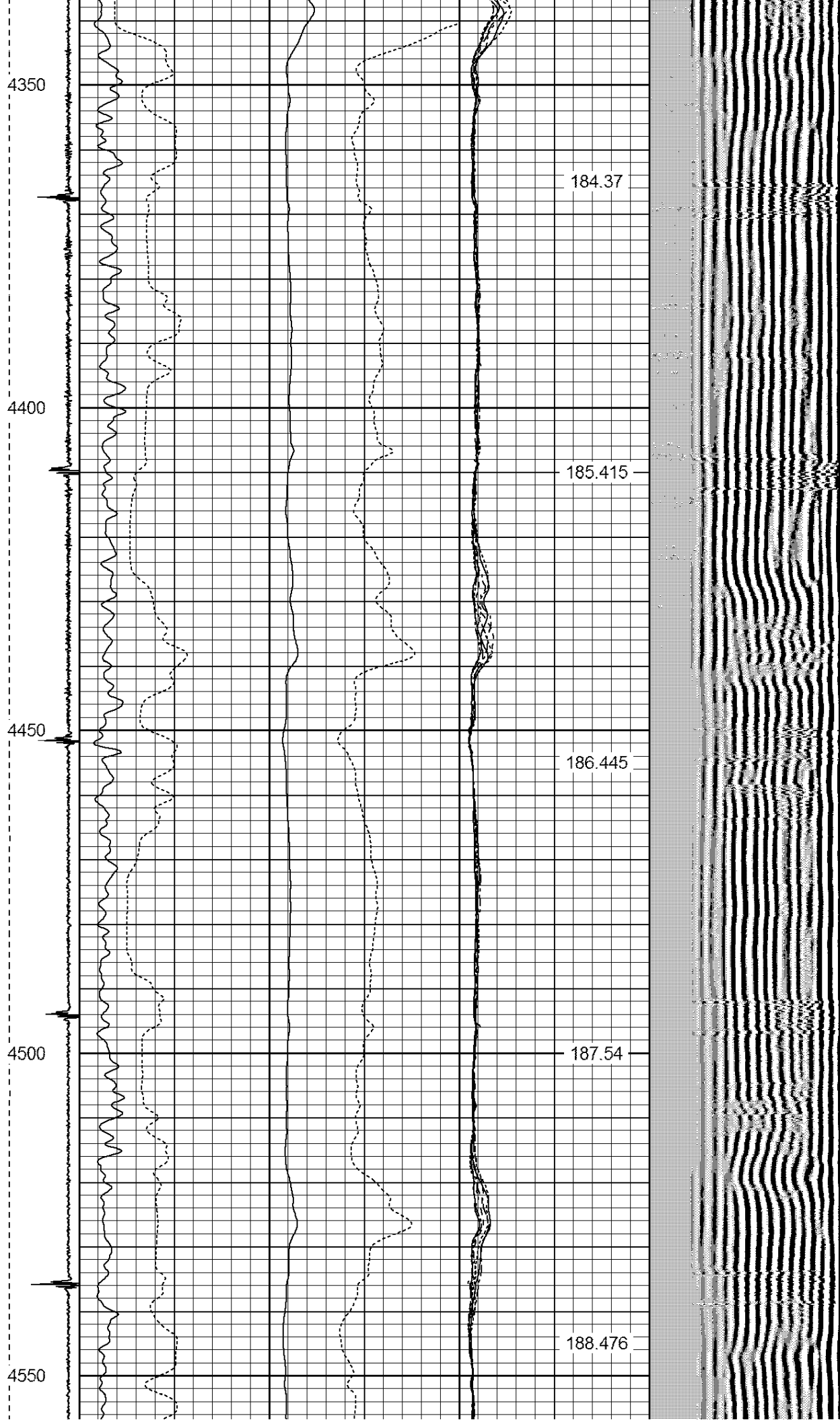
181.335

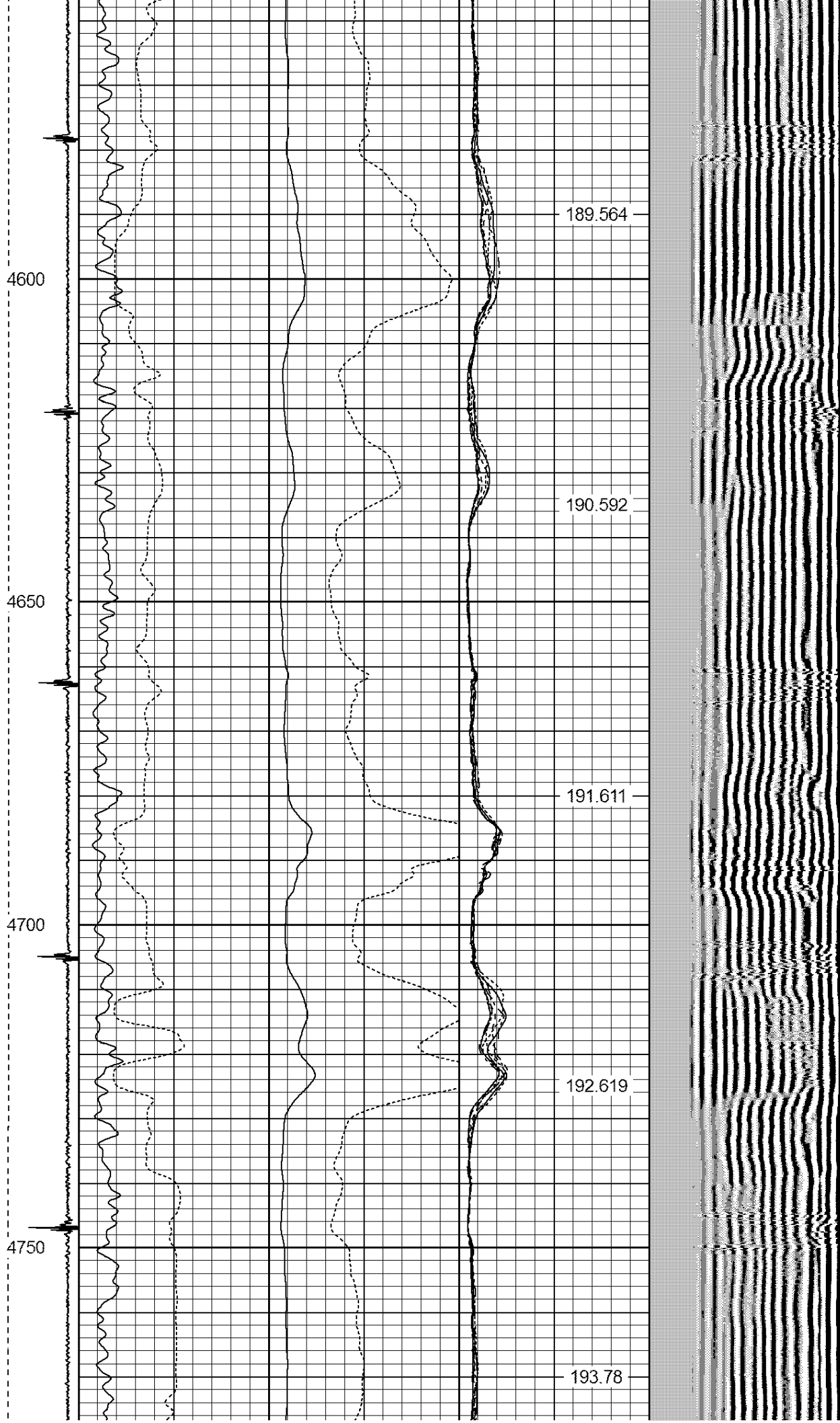
182.32

183.338











4800

4850

4900

4950

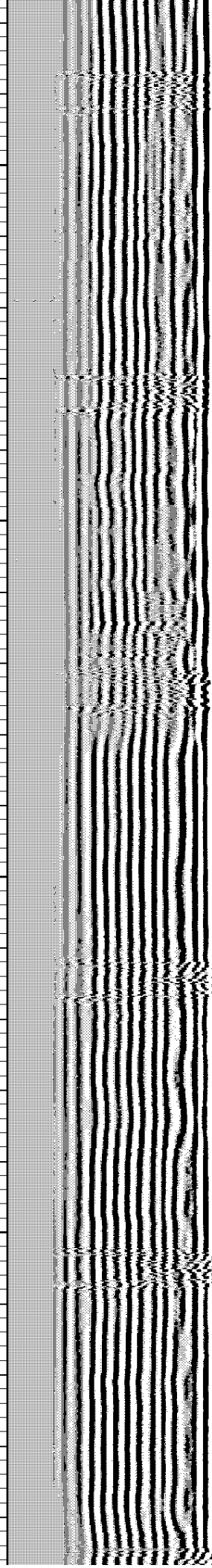
194.856

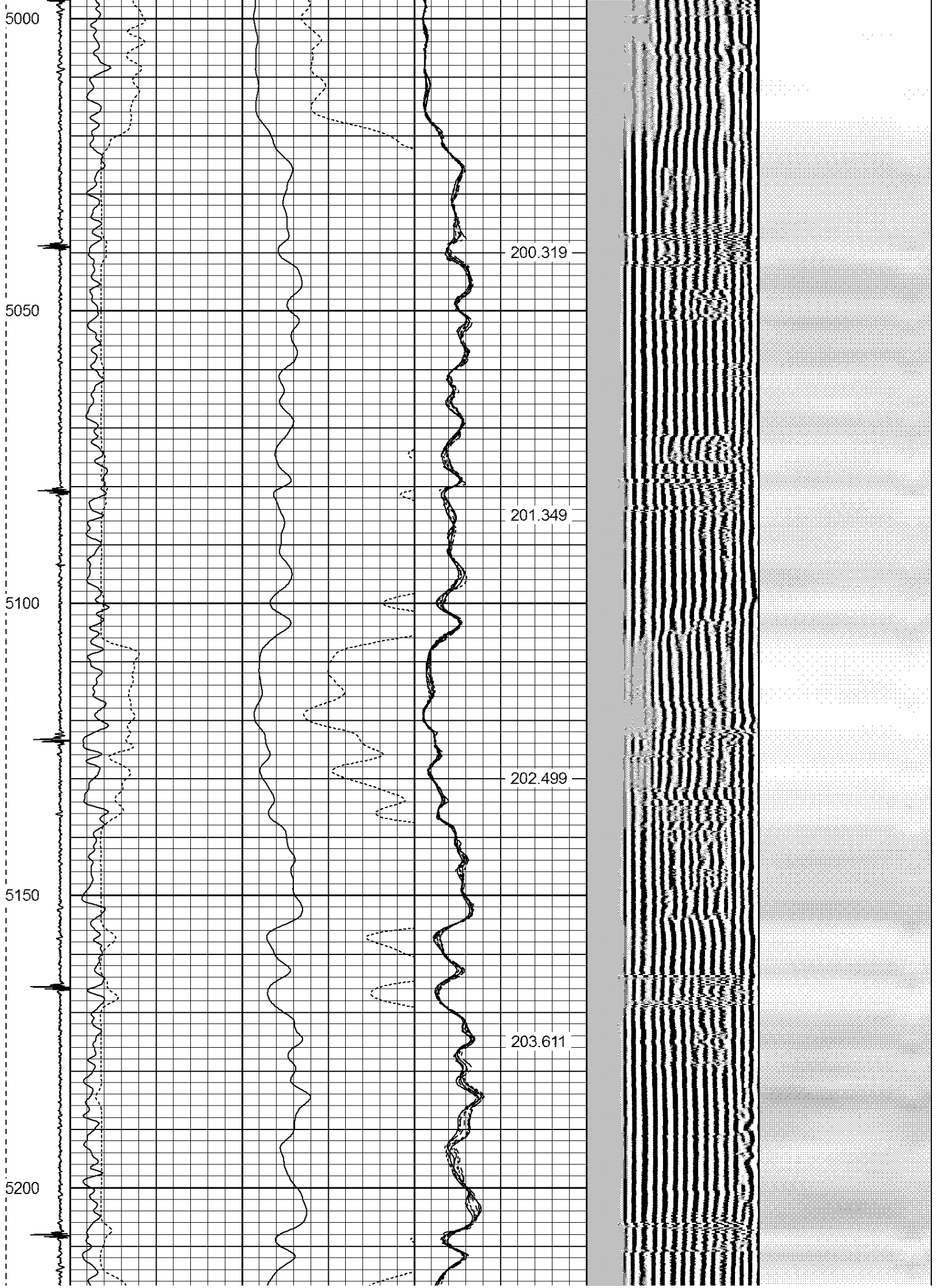
195.86

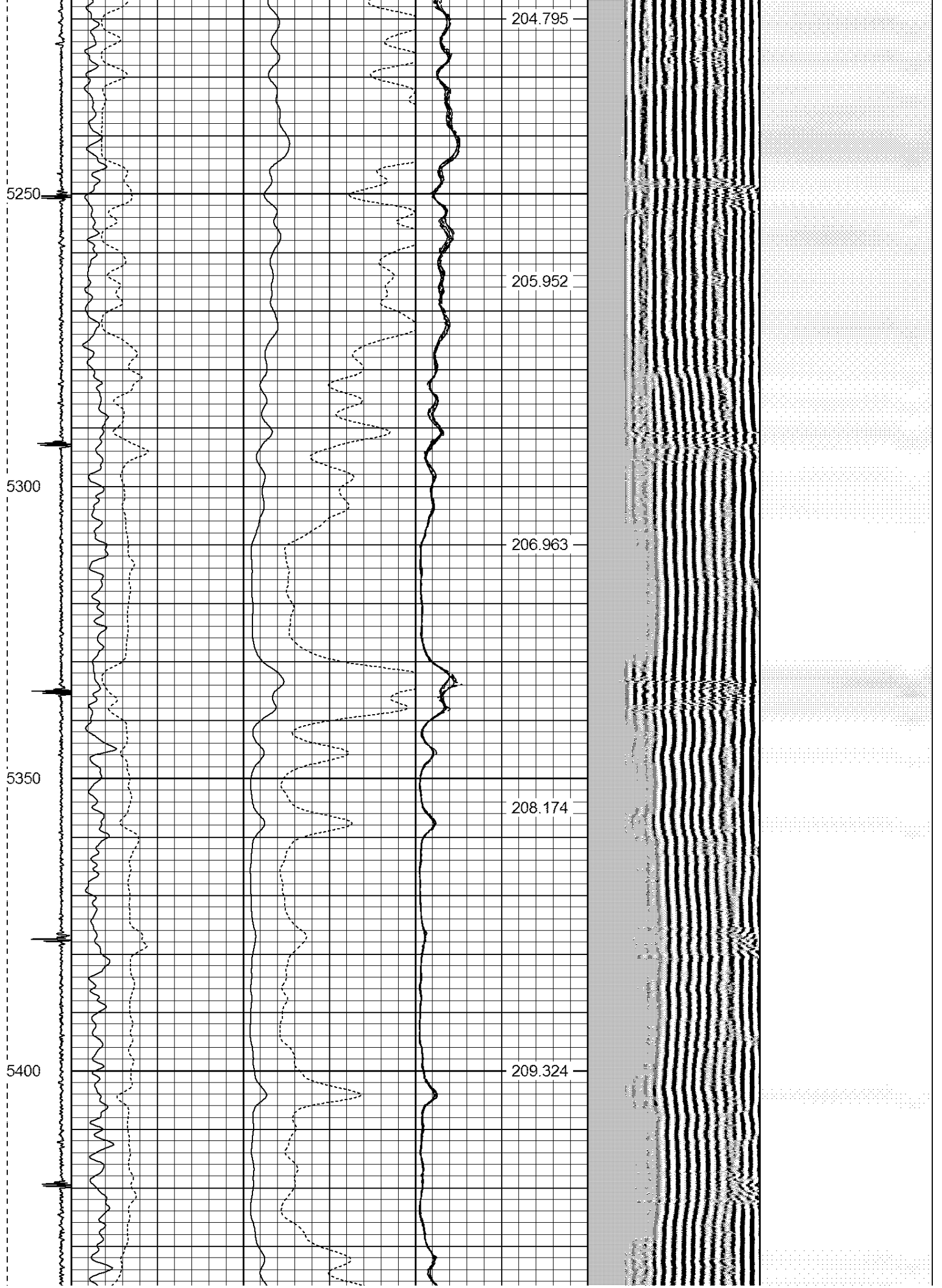
197.035

198.064

199.225







5450

5500

5550

5600

5650

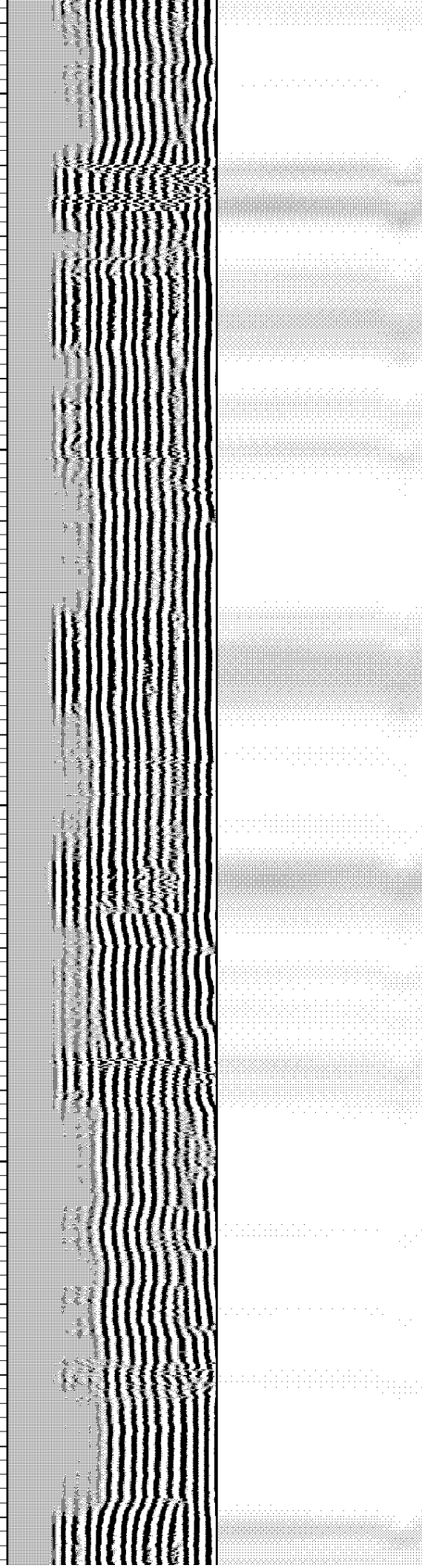
210.436

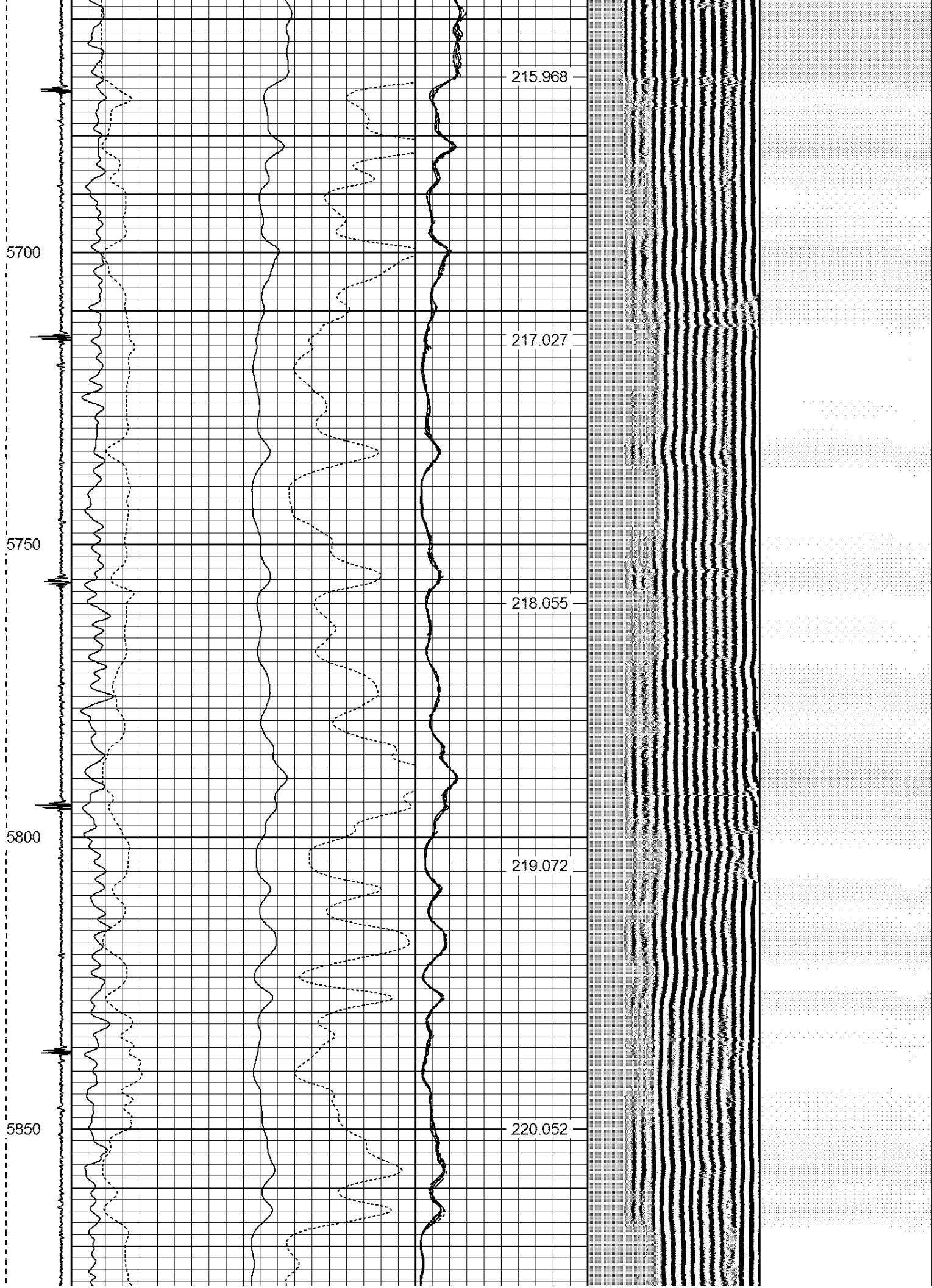
211.569

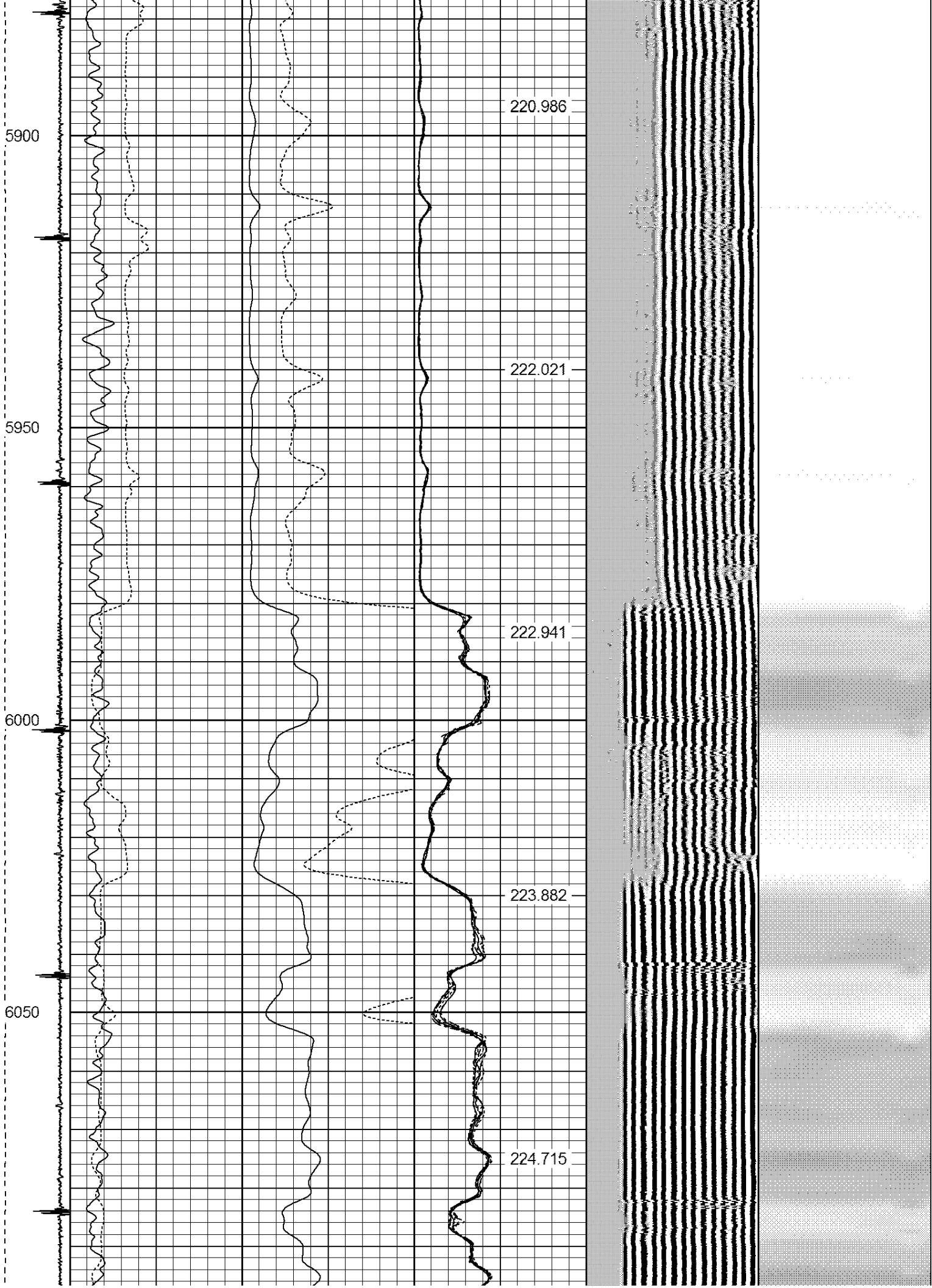
212.711

213.841

214.898









6100

6150

6200

6250

6300

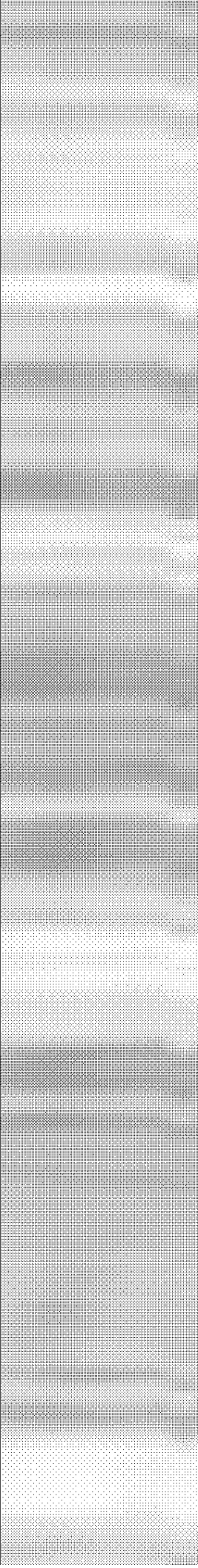
225.512

226.205

227.047

227.725

228.321



6350

6400

6450

6500

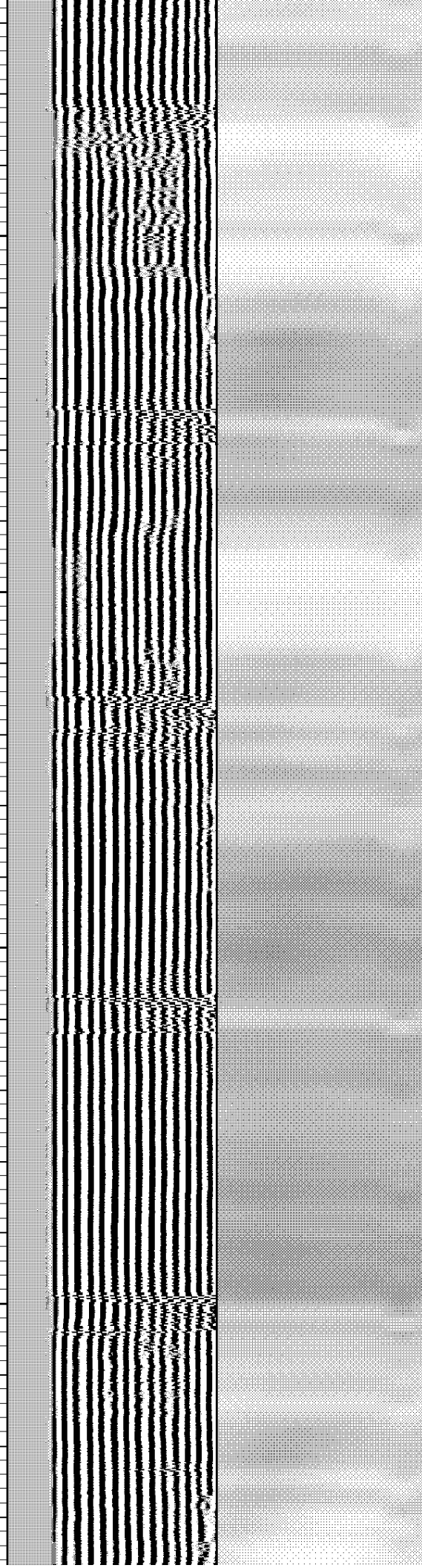
228.998

229.639

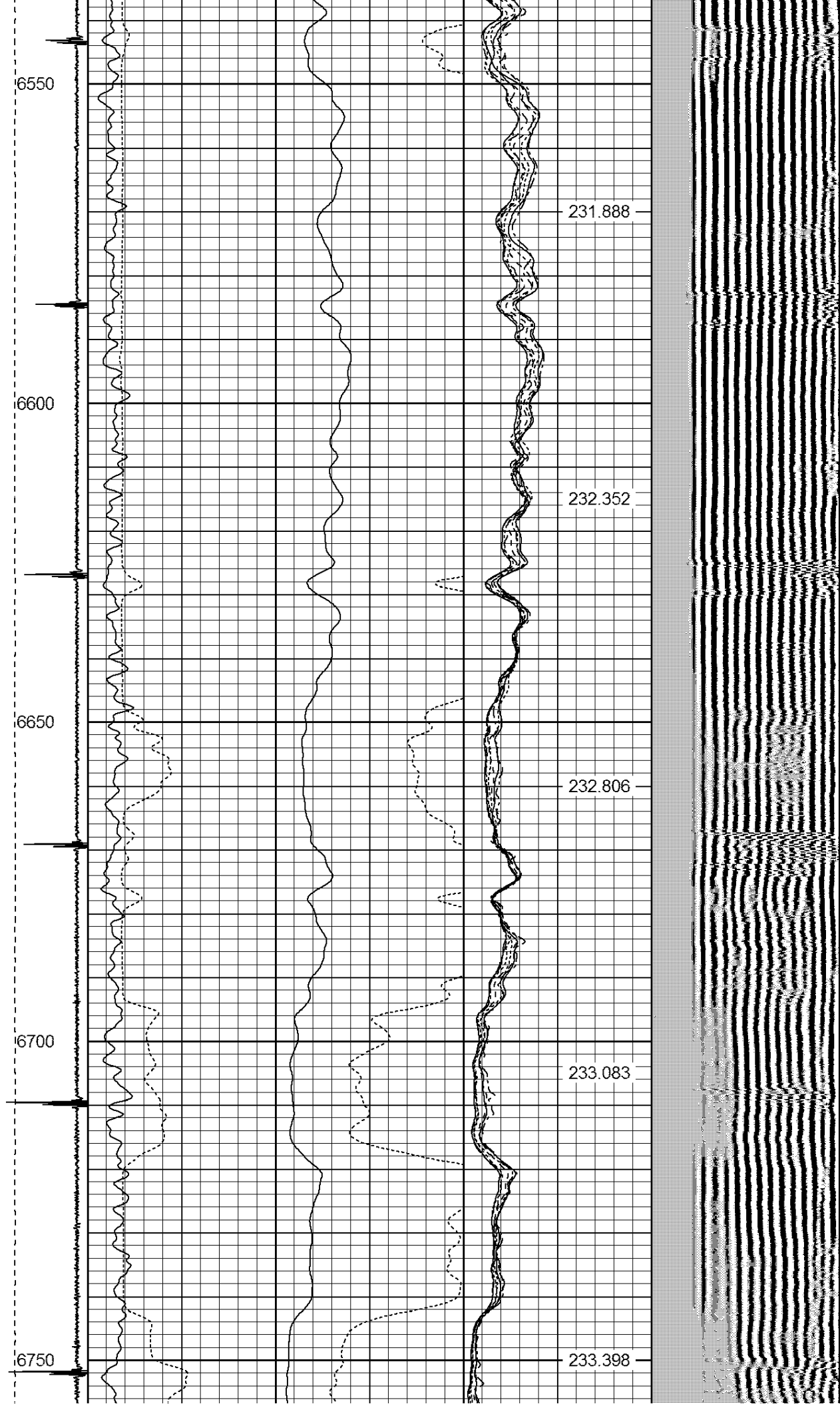
230.261

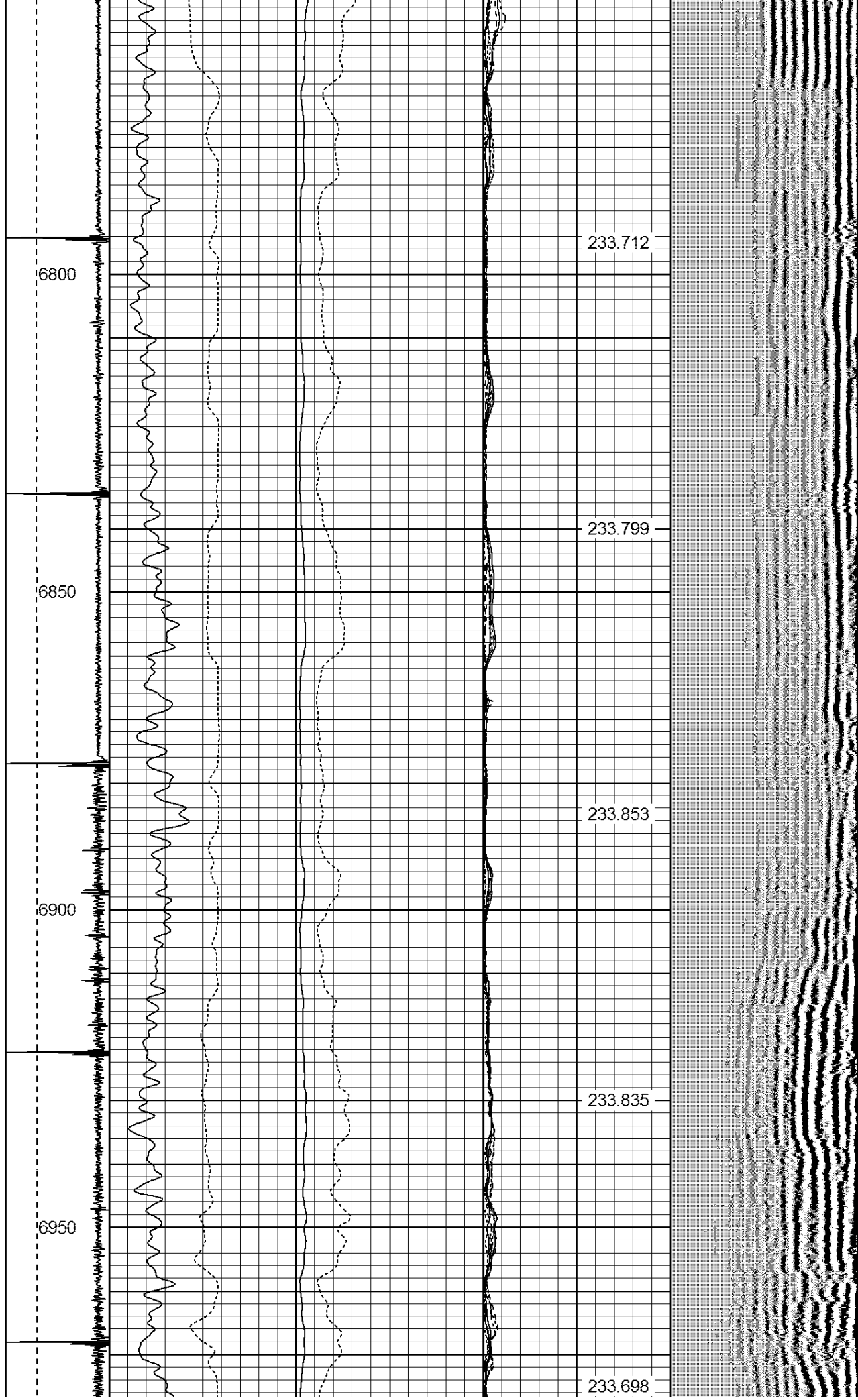
230.676

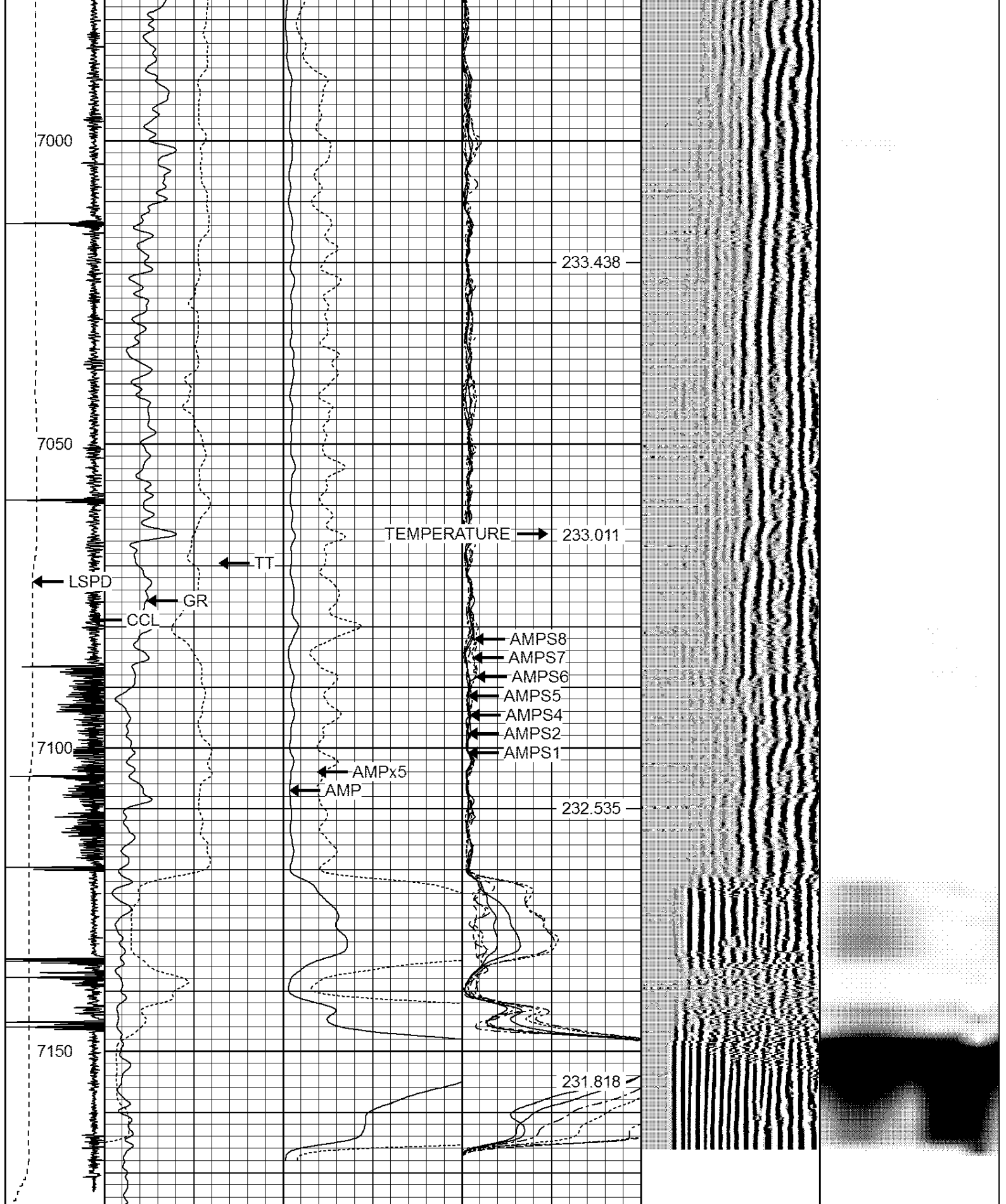
231.297





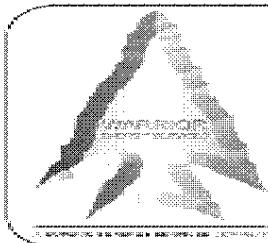






-9	CCL	1	200	TT (usec)	1000	0	AMP (mV)	100	0	AMPS1	100	200	VDL	1200	1	Cement Map	8
LSPD			0	GR (GAPI)	200	0	AMPx5 (mV)	20	0	AMPS2	100				1		100
(ft/min)			200	GR (GAPI)	400				0	AMPS4	100						
0	250								0	AMPS5	100						
									0	AMPS6	100						
									0	AMPS7	100						
									0	AMPS8	100						

0	AMPS6	100
0	AMPS7	100
0	AMPS8	100
IntTemp		
(degF)		



**WARRIOR**  
ENERGY SERVICES

Company BAYSWATER  
Well MOJACK J-28HN  
Field WATTENBURG  
County WELD  
State COLORADO