



Scale: 5" / 100'  
Measured Depth Log

Well Name Kaiser B-10HC

Location SEC.10-T6N-R65W

State COLORADO

County WELD

Country USA

Rig Number FRONTIER 8

API Number 05-123-39603

AFE # 39603

Region DJ BASIN

Field WATTENBERG

Spud Date 8/2/2014

Drilling Completed 9/20/2014

Surface Coordinates 426' FNL 426' FEL

Bottom Hole Coordinates 470' FNL 465' FWL

Ground Elevation 4801'

K.B. Elevation 4824'

Logged Interval 6000' To 11535

Total Depth 11535'

Formation CODELL

Type of Drilling Fluid FWLSND

## Operator

Company BAYSWATER EXPLORATION AND PRODUCTION, L

Address 730 17th Street, Suite 610  
Denver, CO 80202

## Geologist

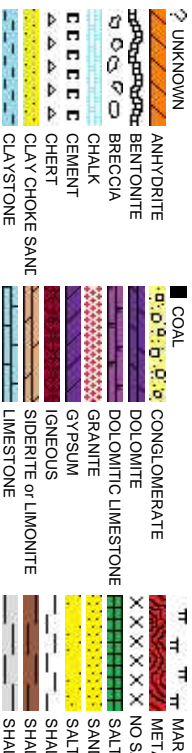
Name ROBERT DAVIS, RIKKI WITHERSPOON

Company COLUMBINE LOGGING INC  
Address 2385 S Lipan St.  
Denver, CO 80223

## Zone Color Coding



## Rock Types



## Accessories

### Fossils

	GASTROPOD
	INOCERAMUS
	OOOLITE
	AMPHIPORA
	OSTRACOD
	BELEMNITE
	BIOCLASTIC
	BRACHIOPOD
	BRYOZOA
	CEPHALOPOD
	CORAL
	CRINOID
	ECHINOID
	FISH
	FORAMINIFERA
	FOSSIL

### Minerals

	ARGILLITE GRAIN
	BENTONITE
	HEAVY MINERAL
	KAOLIN
	MARCASITE
	BRECCIA FRAGMENTS
	CALCAREOUS
	CARBONACEOUS FLAKES
	CHERT
	COAL - THIN BEDS
	DOLOMITIC
	FELDSPAR
	FERRUGINOUS PELLET
	FERRUGINOUS
	GLAUCONITE
	GYPSEFEROUS
	SILICEOUS
	SILTY
	TUFFACEOUS

### Stringer

	ANHYDRITE STRINGER
	BENTONITE STRINGER
	COAL STRINGER
	DOLOMITE STRINGER
	GYPSEUM STRINGER
	LIMESTONE STRINGER
	MARLSTONE (CALC) STRG
	MARLSTONE (DOL) STRG
	SANDSTONE STRINGER
	SHALE STRINGER
	SILTSTONE STRINGER

## Other Symbols

### Oil Show

	PINPOINT
	VUGGY
	DEAD
	EVEN
	QUESTIONABLE
	BIT
	SPOTTED STAINING
	CONNECTION (UP)

### Engineering

	DST INTERVAL
	FAULT
	FORMATION TOP
	GAS SHOW
	OIL SHOW
	MN DEPTH UP

	WIRELINE TESTED - LEFT
	WIRELINE TESTED - RT
	DRILL STEM TEST
	MN DEPTH
	GRAINSTONE
	LITHOGRAPHIC
	MICROXLN
	MUDSTONE

### Rounding

	ANGULAR
--	---------

	PACKSTONE
--	-----------

### Porosity

	CONNECTION GAS
	CONNECTION GAS (LEFT)
	TRIP GAS
	TRIP GAS (LEFT)

	NORMAL FAULT
	OVERTURED STRATA
	REVERSE FAULT
	CASING

	ROUNDED
	SUBANG
	SUBRND
	WACKESTONE

### Sorting

	FRACTURE
	INTERCRYSTALLINE
	INTEROOLITIC
	MOLDIC
	ORGANIC

	DOWN TIME GAS
	DOWN TIME GAS (LEFT)
	CORE - LOST
	CORE - RECOVERED
	SIDEWALL CORE (LEFT)
	SIDEWALL CORE (RIGHT)
	SLIDE
	SURVEY

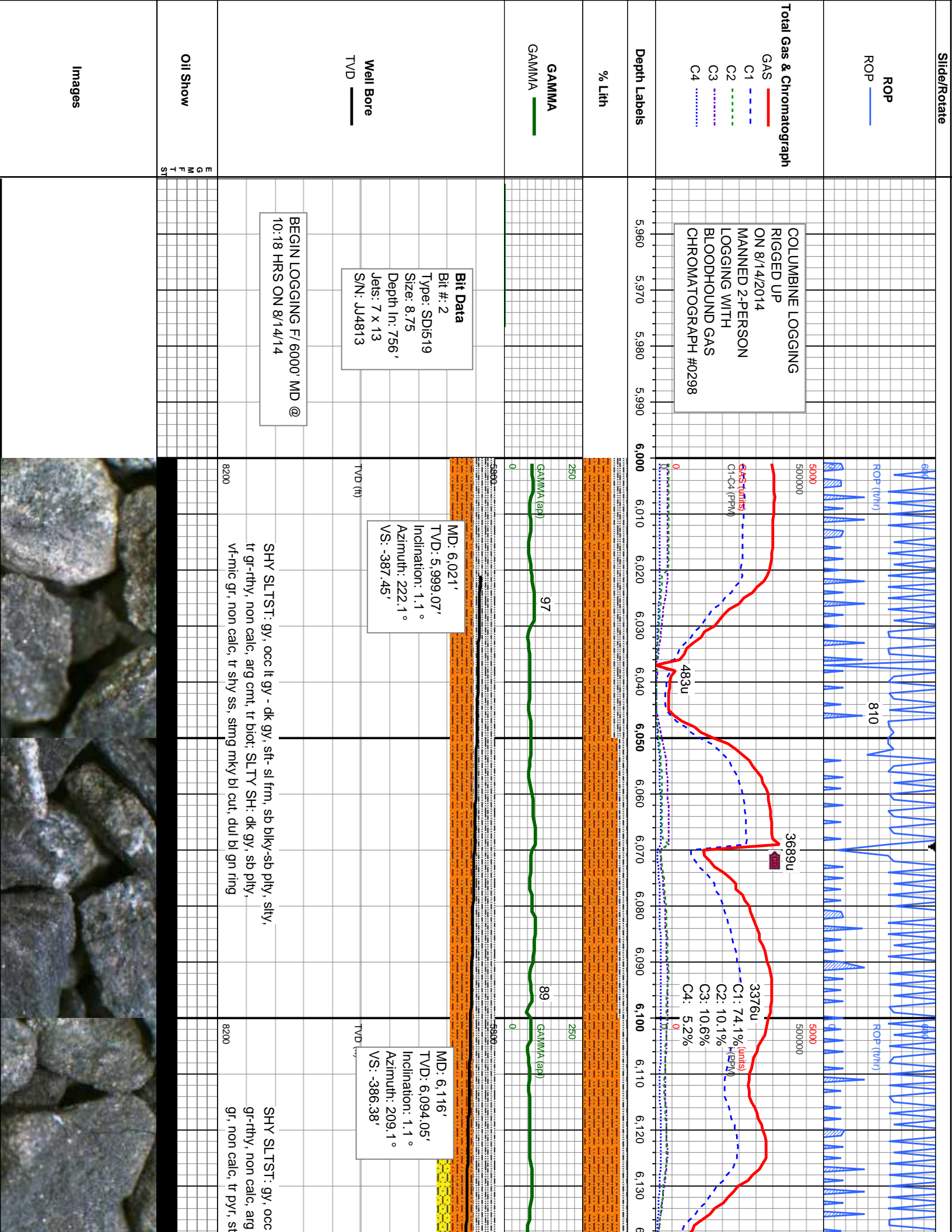
### Textures

	POOR
	WELL
	BOUNDSTONE
	CHALKY
	CRYPTOXLN

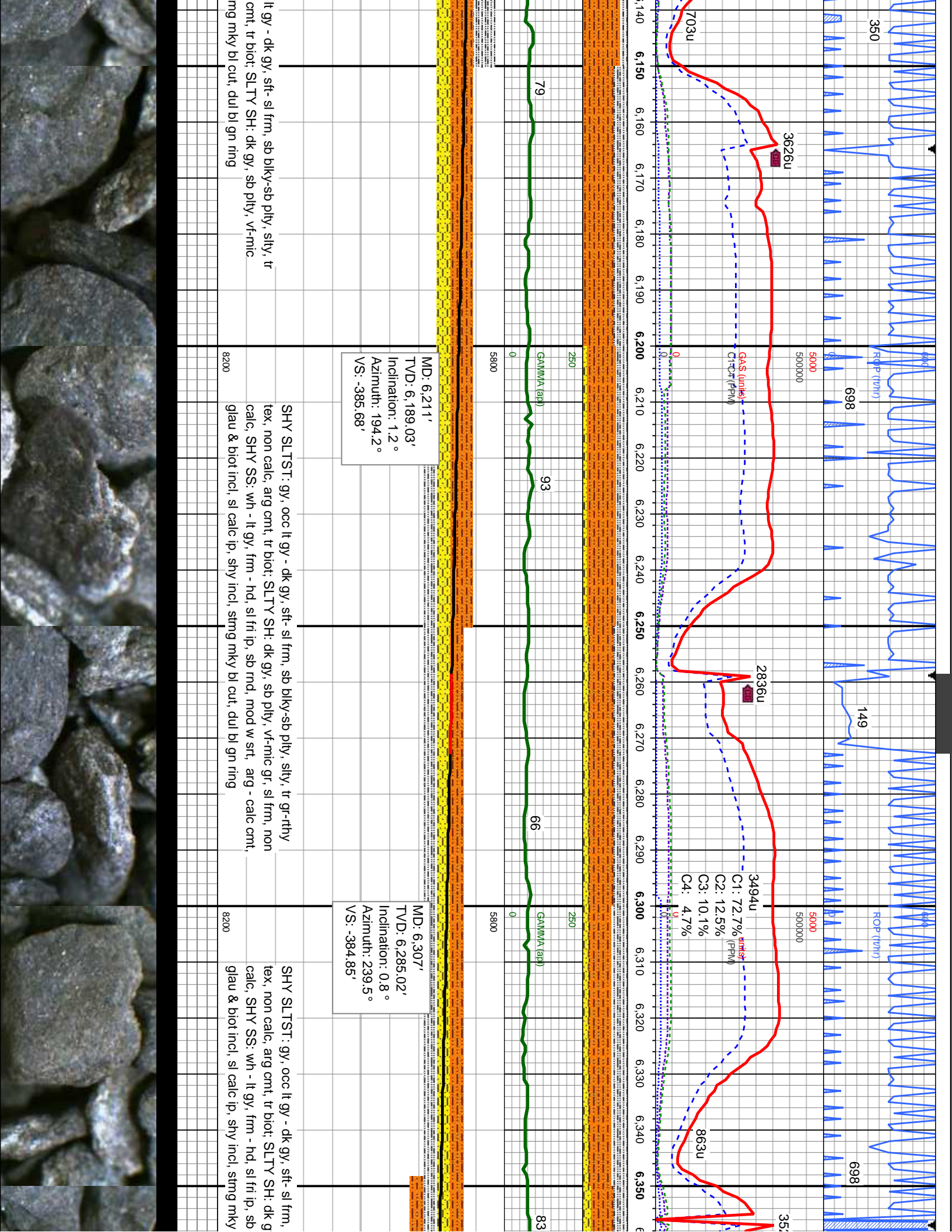
LC

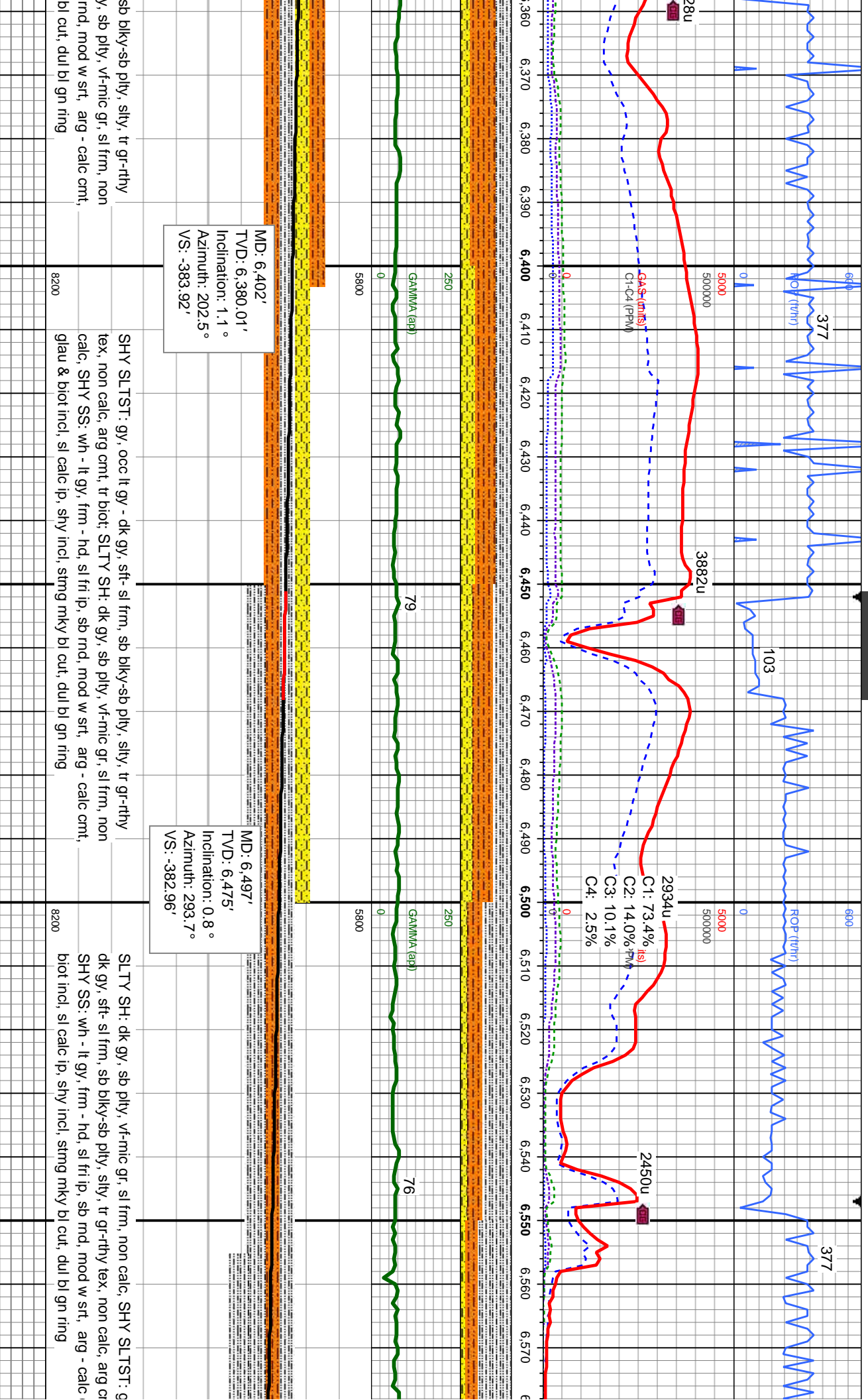


	SHALY SANDSTONE
	SHALY SILTSTONE
	SILTY SHALE
	SILTSTONE
	TUFF
	WELDED TUFF
	PEPPER SAND
	E-COLORED
	GRAY











8/15/2014

MINDEPTH

ROP (t/h)

ROP (t/h)

ROP (t/h)

ROP (t/h)

ROP (t/h)

ROP (t/h)

ROP (t/h)

ROP (t/h)

ROP (t/h)

ROP (t/h)

ROP (t/h)

ROP (t/h)

ROP (t/h)

ROP (t/h)

ROP (t/h)

ROP (t/h)

ROP (t/h)

ROP (t/h)

ROP (t/h)

ROP (t/h)

ROP (t/h)

ROP (t/h)

ROP (t/h)

ROP (t/h)

ROP (t/h)

ROP (t/h)

ROP (t/h)

ROP (t/h)

ROP (t/h)

ROP (t/h)

ROP (t/h)

ROP (t/h)

ROP (t/h)

ROP (t/h)

ROP (t/h)

ROP (t/h)

ROP (t/h)

ROP (t/h)

ROP (t/h)

ROP (t/h)

ROP (t/h)

ROP (t/h)

ROP (t/h)

ROP (t/h)

ROP (t/h)

ROP (t/h)

ROP (t/h)

ROP (t/h)

ROP (t/h)

ROP (t/h)

ROP (t/h)

ROP (t/h)

ROP (t/h)

ROP (t/h)

I/O: WT 9.6/9.7 VIS 42/45

I/O: WT 10.6/9.6 VIS 46/36

I/O: WT 10.0/9.8 VIS 38/37

3794u

345 (unl)

345 (unl)

345 (unl)

345 (unl)

345 (unl)

345 (unl)

345 (unl)

345 (unl)

345 (unl)

345 (unl)

345 (unl)

345 (unl)

345 (unl)

345 (unl)

345 (unl)

345 (unl)

345 (unl)

345 (unl)

345 (unl)

345 (unl)

345 (unl)

345 (unl)

345 (unl)

980u

C1: 96.8%

C2: 1.9%intls

C3: 0.9%(PPM)

C4: 0.4%

C4: 0.4%

C4: 0.4%

C4: 0.4%

C4: 0.4%

C4: 0.4%

C4: 0.4%

C4: 0.4%

C4: 0.4%

C4: 0.4%

C4: 0.4%

C4: 0.4%

C4: 0.4%

C4: 0.4%

C4: 0.4%

C4: 0.4%

C4: 0.4%

C4: 0.4%

C4: 0.4%

C4: 0.4%

2199u

694u

694u

694u

694u

694u

694u

694u

694u

694u

694u

694u

694u

694u

694u

694u

694u

694u

694u

694u

694u

694u

694u

694u

1596u

1596u

1596u

1596u

1596u

1596u

1596u

1596u

1596u

1596u

1596u

1596u

1596u

1596u

1596u

1596u

1596u

1596u

1596u

1596u

1596u

1596u

1596u

1596u

SLTY SH: dk gy, sb pily - sb blk, vf-mic gr, w str, w rmd, sl frm, non calc, sting mky bl cut, dul bl gn ring

MD: 6,592'

TVD: 6,569.99'

Inclination: 0.4°

Azimuth: 263.3°

VS: -382.03'

MD: 6,639'

TVD: 6,616.99'

Inclination: 1.1°

Azimuth: 265.9°

VS: -381.41'

MD: 6,668'

TVD: 6,665.85'

Inclination: 6.9°

Azimuth: 295.4°

VS: -378.29'

MD: 6,735'

TVD: 6,712.23'

Inclination: 11.6°

Azimuth: 309.3°

VS: -372.11'

MD: 6,783'

TVD: 6,759.06'

Inclination: 13.9°

Azimuth: 296.1°

VS: -363.23'

SLTY SH: dk gy, sb pily, vf-mic gr, sl frm, non calc, SHY SLTST: gy, occ lt gy - nt, tr biot, cnt, glau & sting mky bl cut, dul bl gn ring

8200

8200

8200

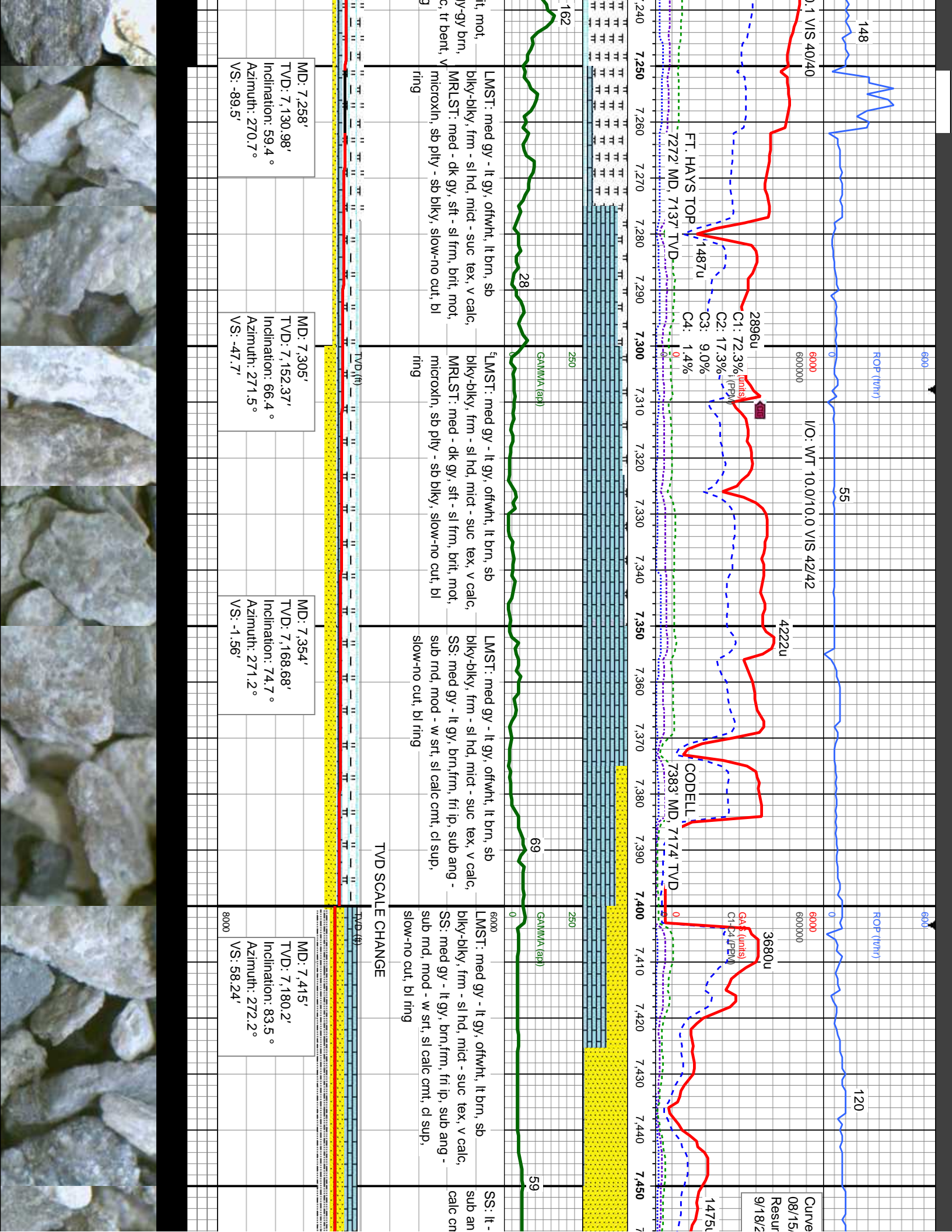






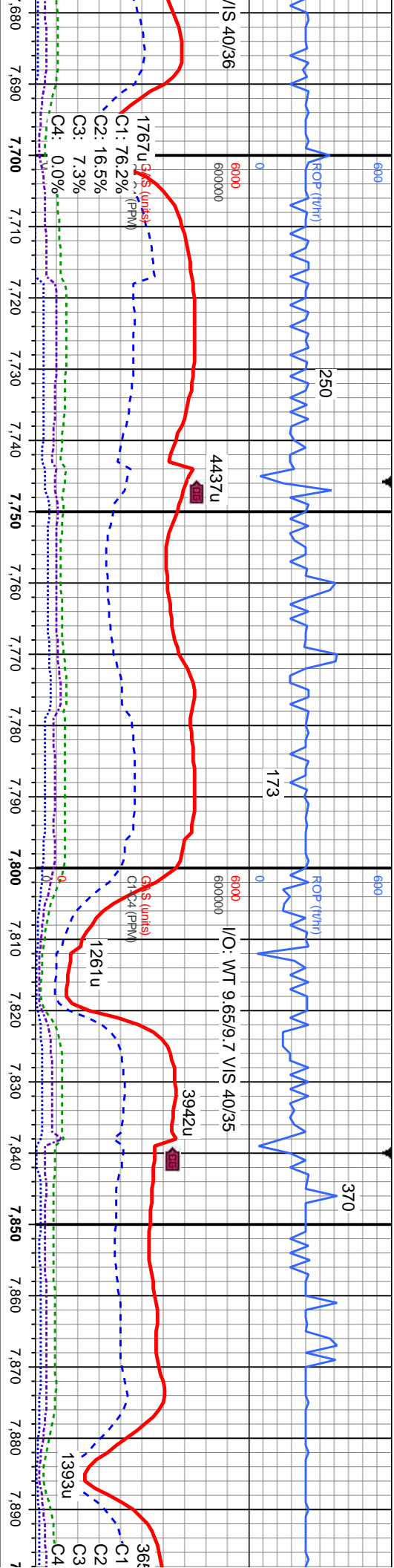












ht, lt brn, sb  
- suc tex, v calc, tr

LMST: med gy - lt gy, offwht, lt brn, sb  
biky-biky, frm - sl hd, mict - suc tex, v calc,  
slow-no cut, bl ring

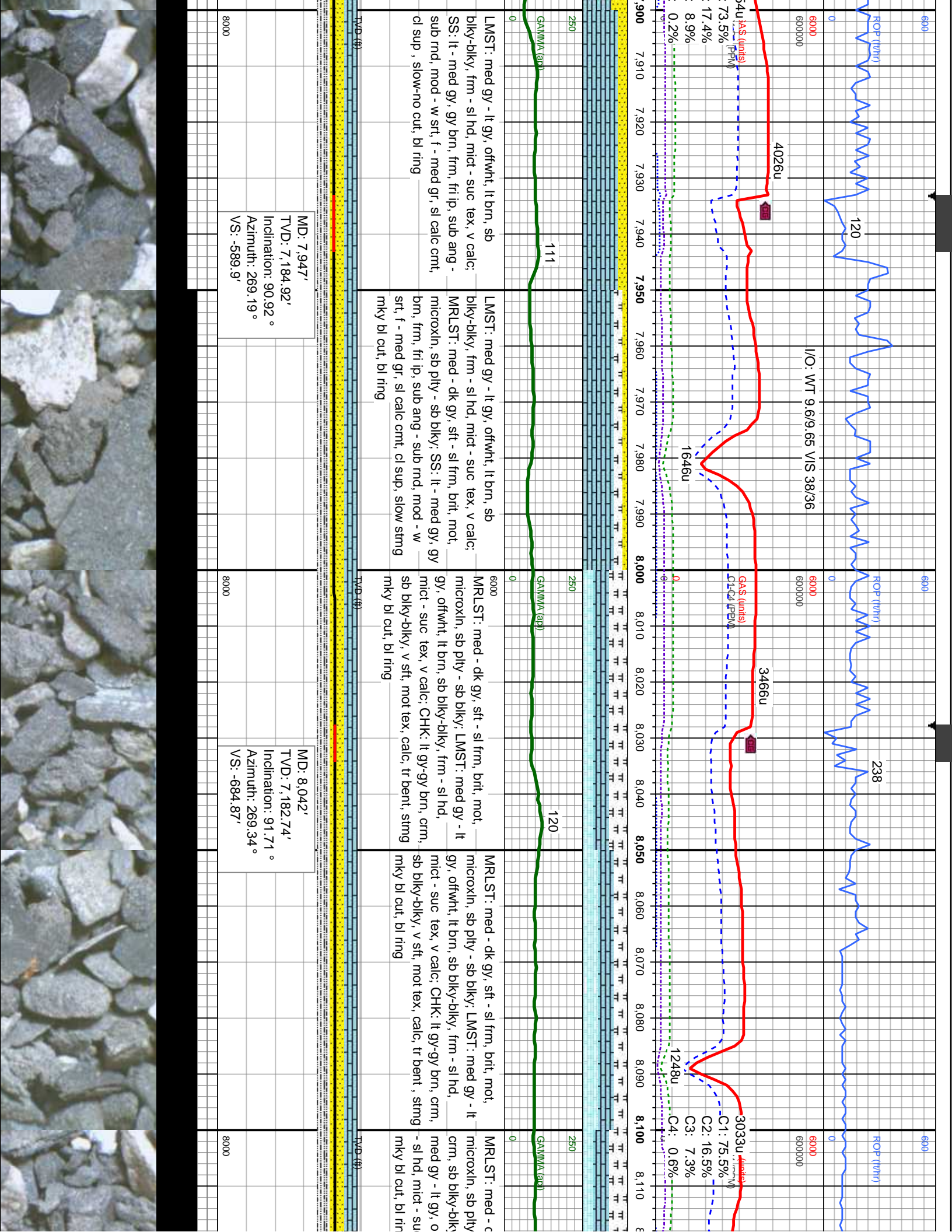
LMST: med gy - lt gy, offwht, lt brn, sb  
biky-biky, frm - sl hd, mict - suc tex, v calc,  
SS, slow-no cut, bl ring

LMST: med gy - lt gy, offwht, lt brn, sb  
biky-biky, frm - sl hd, mict - suc tex, v calc,  
SS: lt - med gy, gy brn, frm, fri ip, sub ang -  
sub rnd, mod - w srt, f - med gr, sl calc cmt,  
cl sup, slow-no cut, bl ring

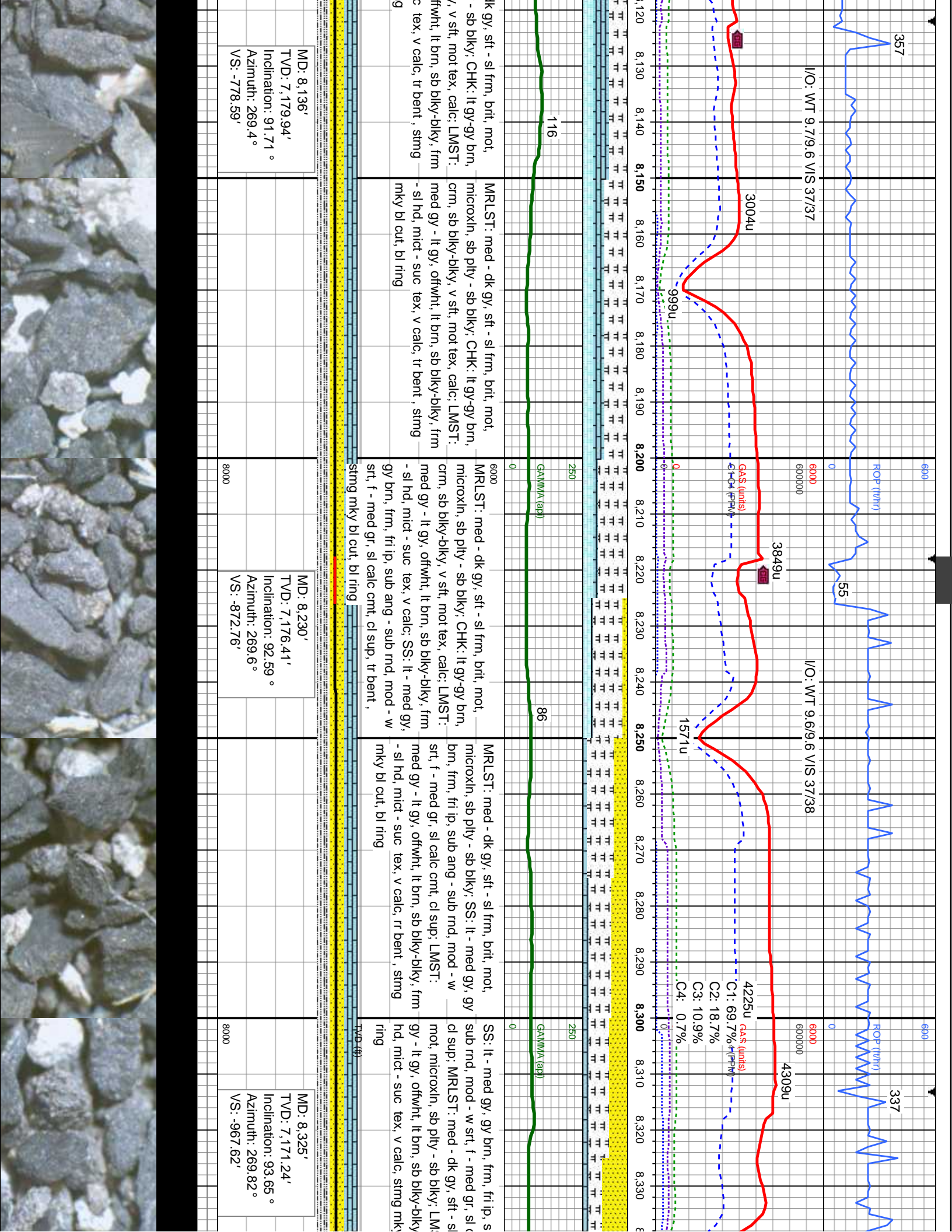
LMST: med gy - lt gy, offwht, lt brn, sb  
biky-biky, frm - sl hd, mict - suc tex, v calc,  
SS: lt - med gy, gy brn, frm, fri ip, sub ang -  
sub rnd, mod - w srt, f - med gr, sl calc cmt,  
cl sup, slow-no cut, bl ring

TVD (ft)	TVD (ft)	TVD (ft)
MD: 7,758'	MD: 7,853'	MD: 7,853'
TVD: 7,187.03'	TVD: 7,186.22'	TVD: 7,186.22'
Inclination: 90.31 °	Inclination: 90.66 °	Inclination: 90.66 °
Azimuth: 268.8 °	Azimuth: 268.08 °	Azimuth: 268.08 °
VS: 400.94'	VS: 495.92'	VS: 495.92'



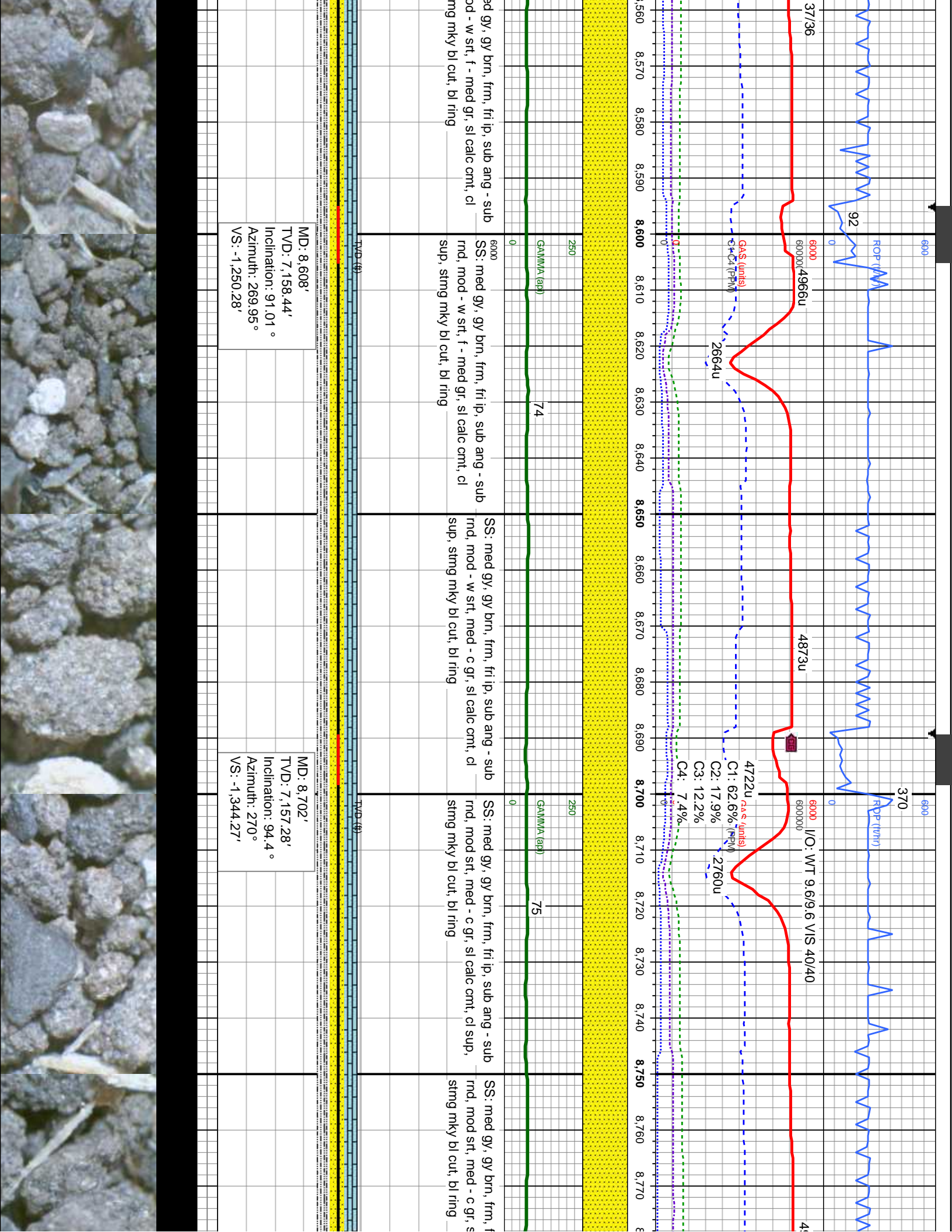










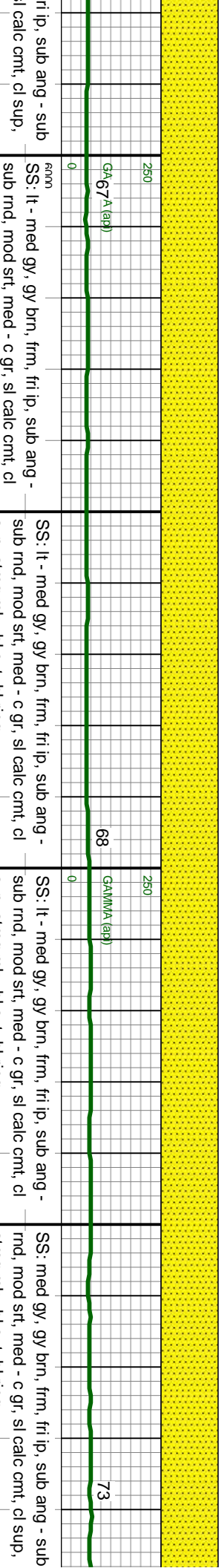
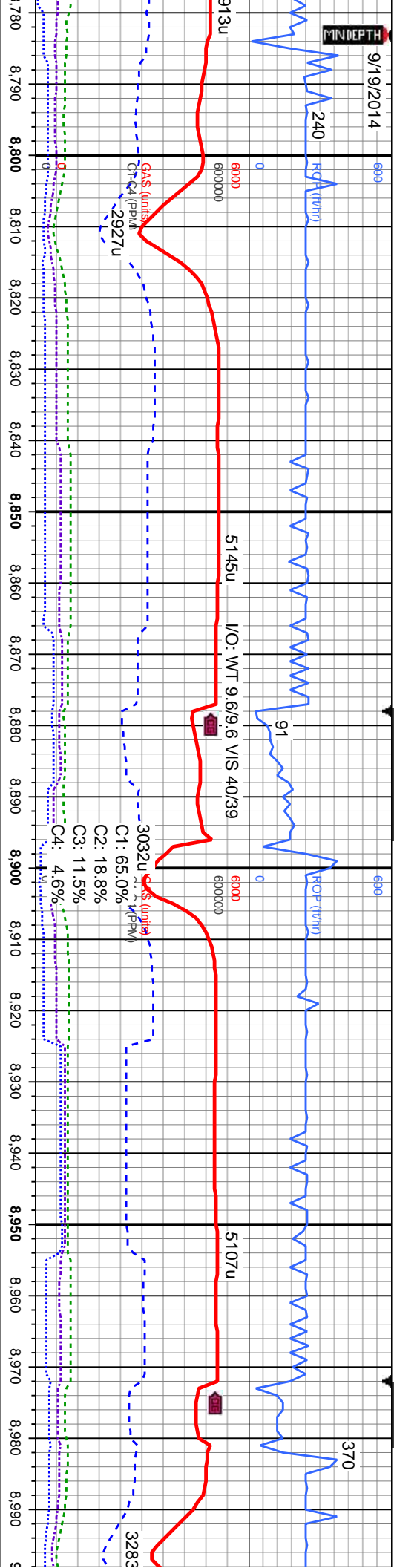


MD: 8,608'  
TVD: 7,158.44'  
Inclination: 91.01 °  
Azimuth: 269.95°  
VS: -1,250.28'

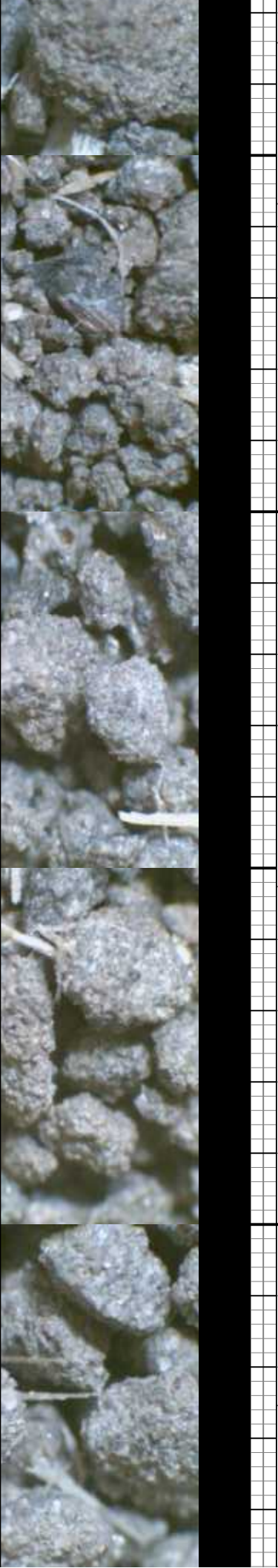
MD: 8,702'  
TVD: 7,157.28'  
Inclination: 94.4 °  
Azimuth: 270°  
VS: -1,344.27'

9/19/2014

MINDEPTH

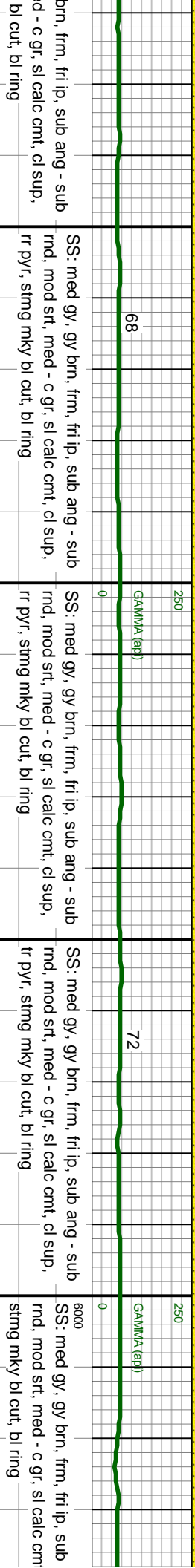
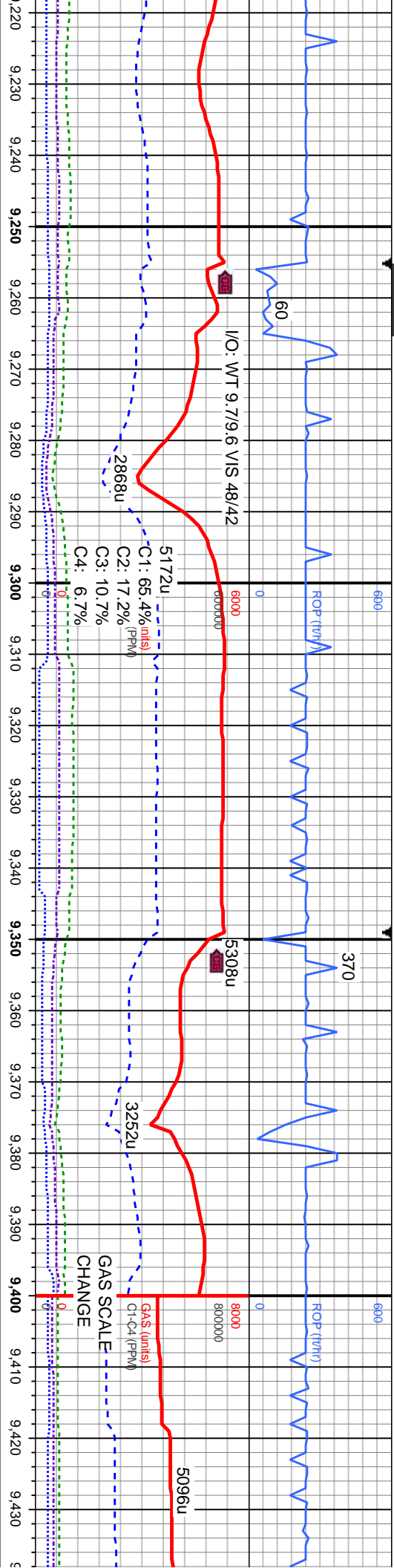


sup, stmg mky bl cut, bl ring	sup, stmg mky bl cut, bl ring	sup, stmg mky bl cut, bl ring	stmg mky bl cut, bl ring
TVD: (ft)		TVD: (ft)	
MD: 8,796' TVD: 7,155.84' Inclination: 91.36 ° Azimuth: 269.9 ° VS: -1,438.03'	MD: 8,891' TVD: 7,154.75' Inclination: 89.96 ° Azimuth: 269.41 ° VS: -1,533.02'	MD: 8,985' TVD: 7,154.16' Inclination: 90.75 ° Azimuth: 269.67 ° VS: -1,627.02'	





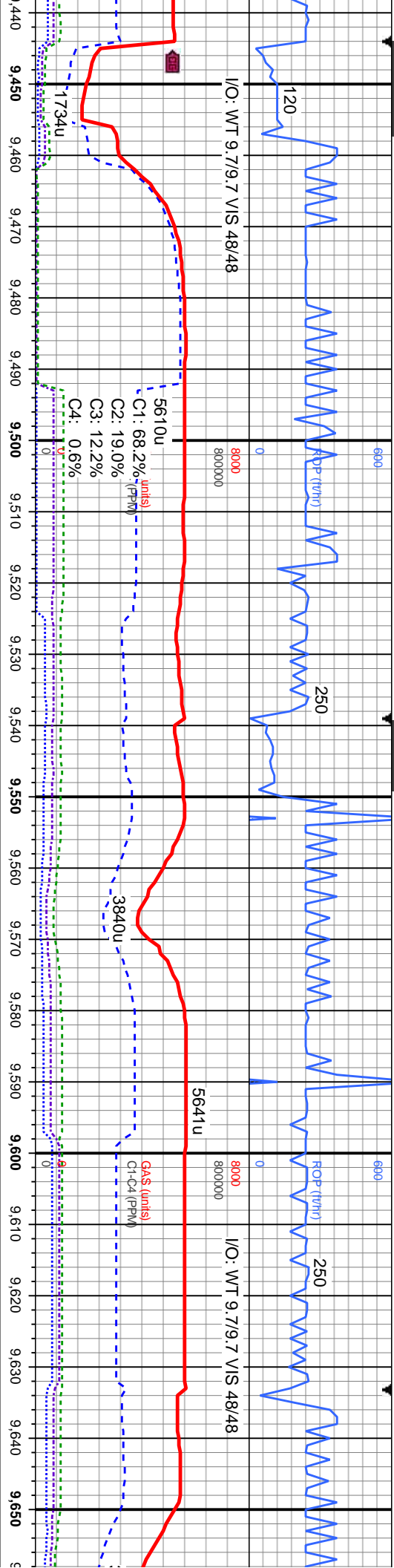




MD: 9,269'  
TVD: 7,148.5'  
Inclination: 90.13°  
Azimuth: 270.21°  
VS: -1,910.94'

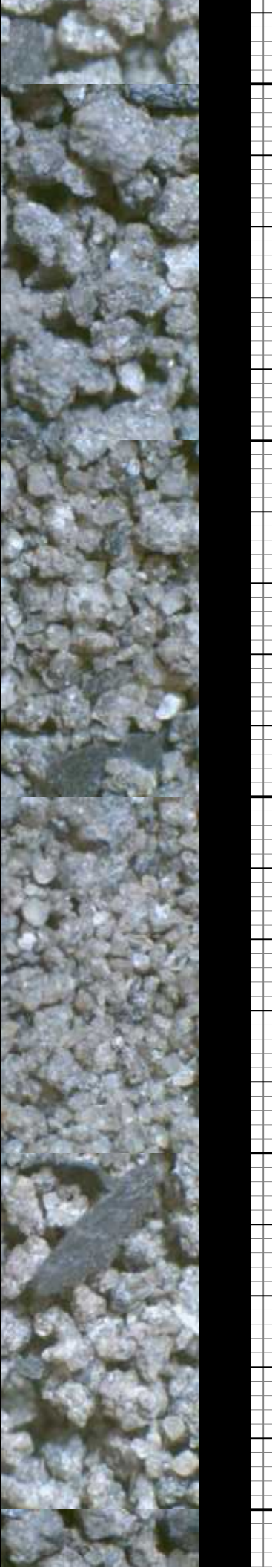
MD: 9,363'  
TVD: 7,148.07'  
Inclination: 90.4°  
Azimuth: 268.58°  
VS: -2,004.93'

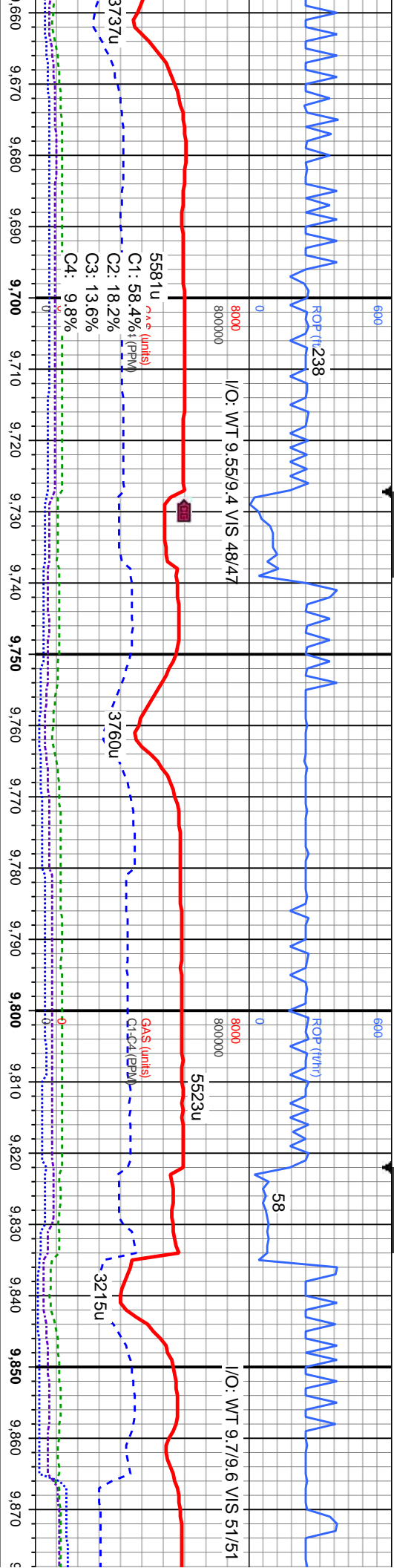




ang - sub sub, ci sup,	SS: lt - med gy, gy brn, frm, fri lp, sub ang - sub rnd, mod srl, med - c gr, sl calc cntl, ci sup, stimg mky bl cut, bl ring	SS: lt - med gy, gy brn, frm, fri lp, sub ang - sub rnd, mod srl, med - c gr, sl calc cntl, ci sup, stimg mky bl cut, bl ring	SS: lt - med gy, gy brn, frm, fri lp, sub ang - sub rnd, mod srl, med - c gr, sl calc cntl, ci sup, stimg mky bl cut, bl ring	SS: lt - med gy, gy brn, frm, fri lp, sub ang - sub rnd, mod srl, med - c gr, sl calc cntl, ci sup, stimg mky bl cut, bl ring
72	73	76		

MD: 9,457' TVD: 7,147.63' Inclination: 90.13 ° Azimuth: 269.88 ° VS: -2,098.93'	MD: 9,552' TVD: 7,147.42' Inclination: 90.13 ° Azimuth: 270.41 ° VS: -2,193.92'	MD: 9,646' TVD: 7,146.77' Inclination: 90.66 ° Azimuth: 269.86 ° VS: -2,287.91'
8000	8000	8000



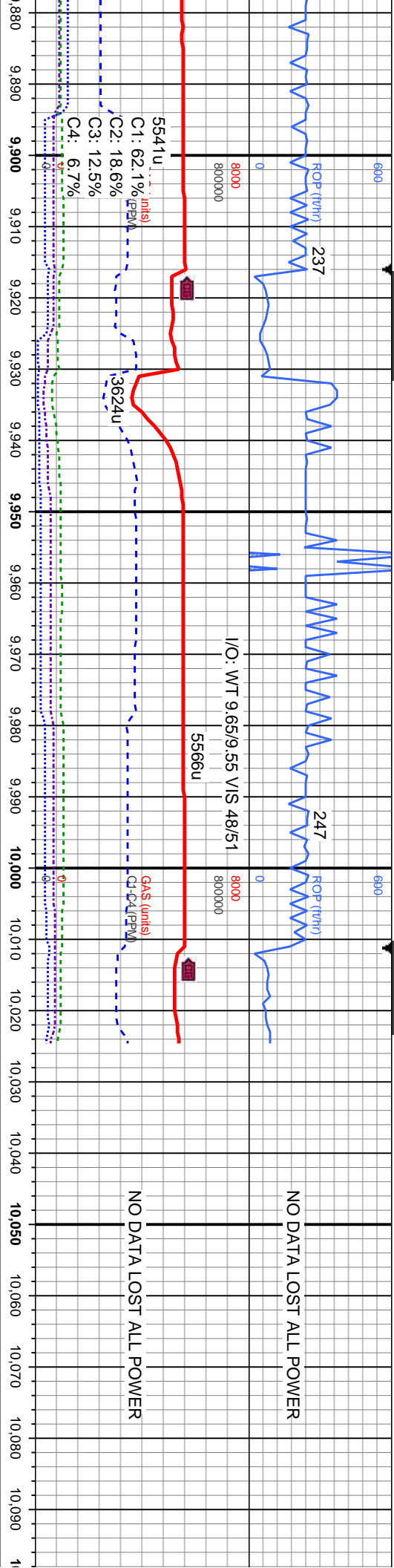


med gy, gy brn, frm, fri lp, sub ang - d, mod srt, med - c gr, sl calc cnt, cl mky bl cut, bl ring	SS: lt - med gy, gy brn, frm, fri lp, sub ang - sub rnd, mod srt, med gr, sl calc cnt, cl sup, stmg mky bl cut, bl ring	SS: lt - med gy, gy brn, frm, fri lp, sub ang - sub rnd, mod srt, med gr, sl calc cnt, cl sup, stmg mky bl cut, bl ring	SS: lt - med gy, gy brn, frm, fri lp, sub ang - sub rnd, mod srt, med gr, sl calc cnt, cl sup, r pyr, stmg mky bl cut, bl ring	SS: lt - med gy, gy brn, frm, fri lp, sub ang - sub rnd, mod srt, med gr, sl calc cnt, cl sup, stmg mky bl cut, bl ring
--	---	---	--	---

MD: 9.741' TVD: 7,146.04' Inclination: 90.22 ° Azimuth: 269.04 ° VS: -2,382.91'	MD: 9.835' TVD: 7,145.53' Inclination: 90.4 ° Azimuth: 269.43 ° VS: -2,476.91'
---	--





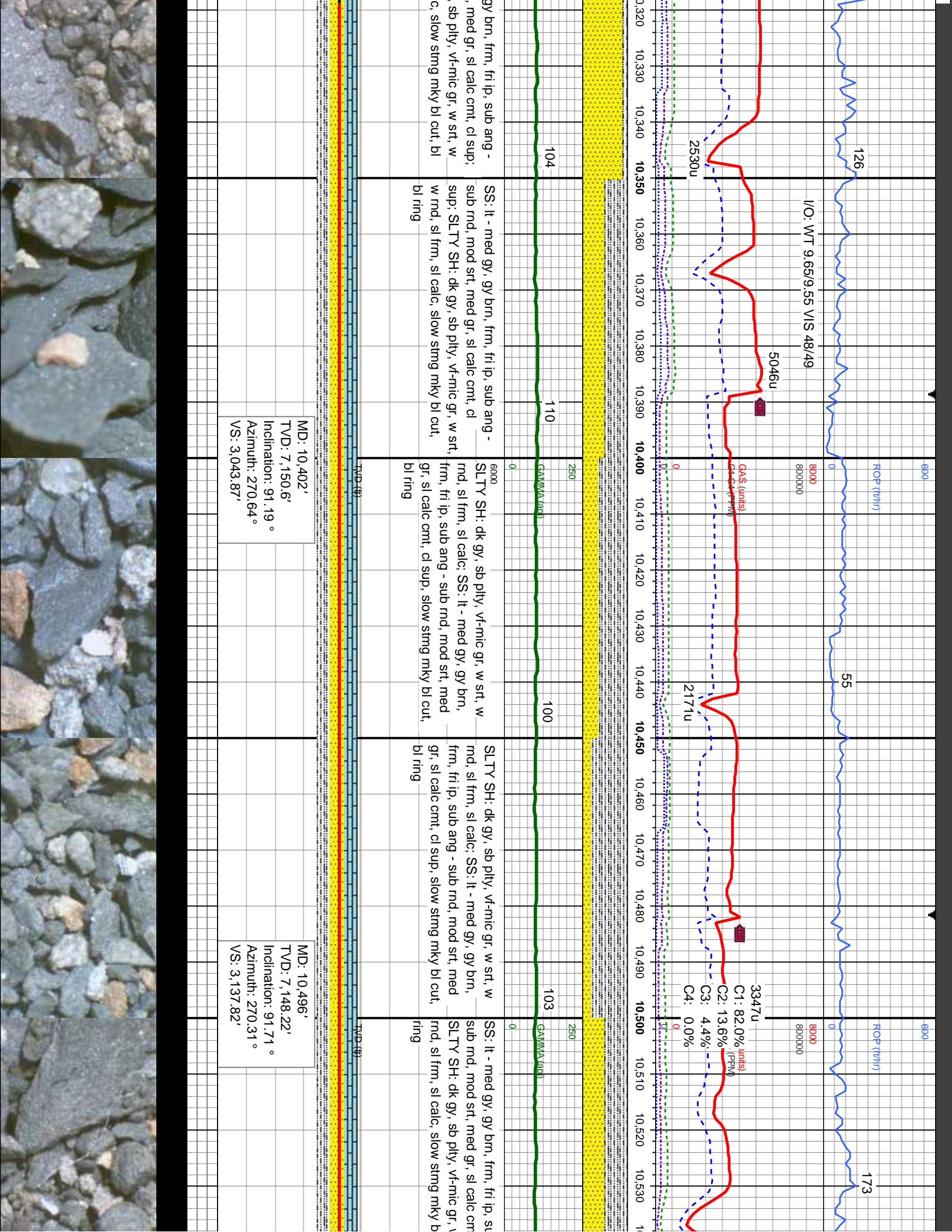


SS: lt - med gy, gy brn, frm, fri ip, sub ang - sub rnd, mod srt, med gr, sl calc cnt, cl sup, stmg mky bl cut, bl ring	SS: lt - med gy, gy brn, frm, fri ip, sub ang - sub rnd, mod srt, med gr, sl calc cnt, cl sup, stmg mky bl cut, bl ring	SS: lt - med gy, gy brn, frm, fri ip, sub ang - sub rnd, mod srt, med gr, sl calc cnt, cl sup, stmg mky bl cut, bl ring
67	68	76
GA(MMA (ap)	GA(MMA (ap)	GA(MMA (ap)
MD: 9,930'	MD: 10,024'	
TVD: 7,144.87'	TVD: 7,145.01'	
Inclination: 90.4 °	Inclination: 89.43 °	
Azimuth: 271.06 °	Azimuth: 270.58 °	
VS: -2,571.9'	VS: 2,666.1'	







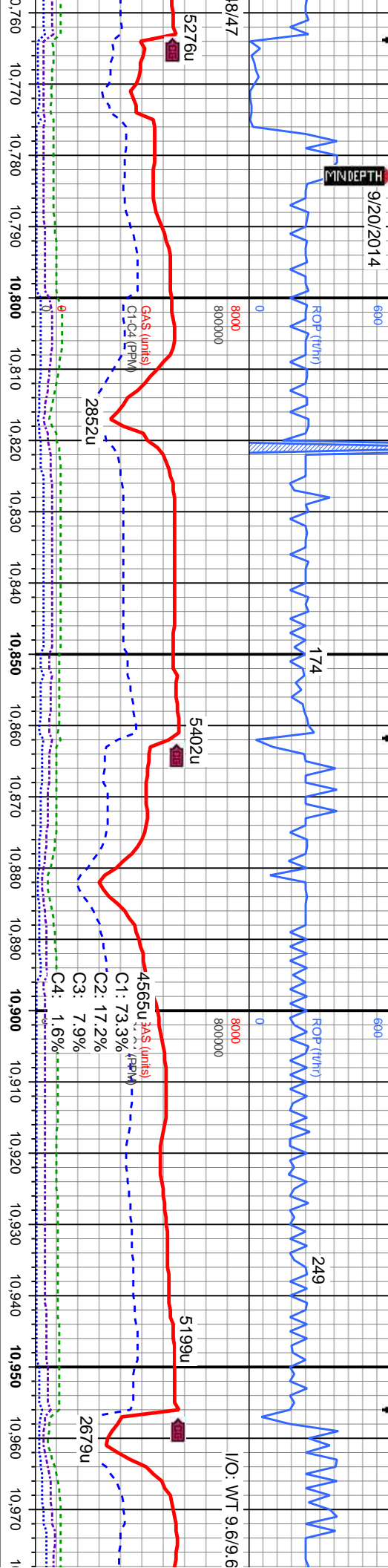






9/20/2014

MINDEPTH



med gy, gy brn, frm, fri lp, sub ang -  
d, mod srt, med gr, sl calc cnt, cl sup,  
sup, sting mky bl cut, bl ring

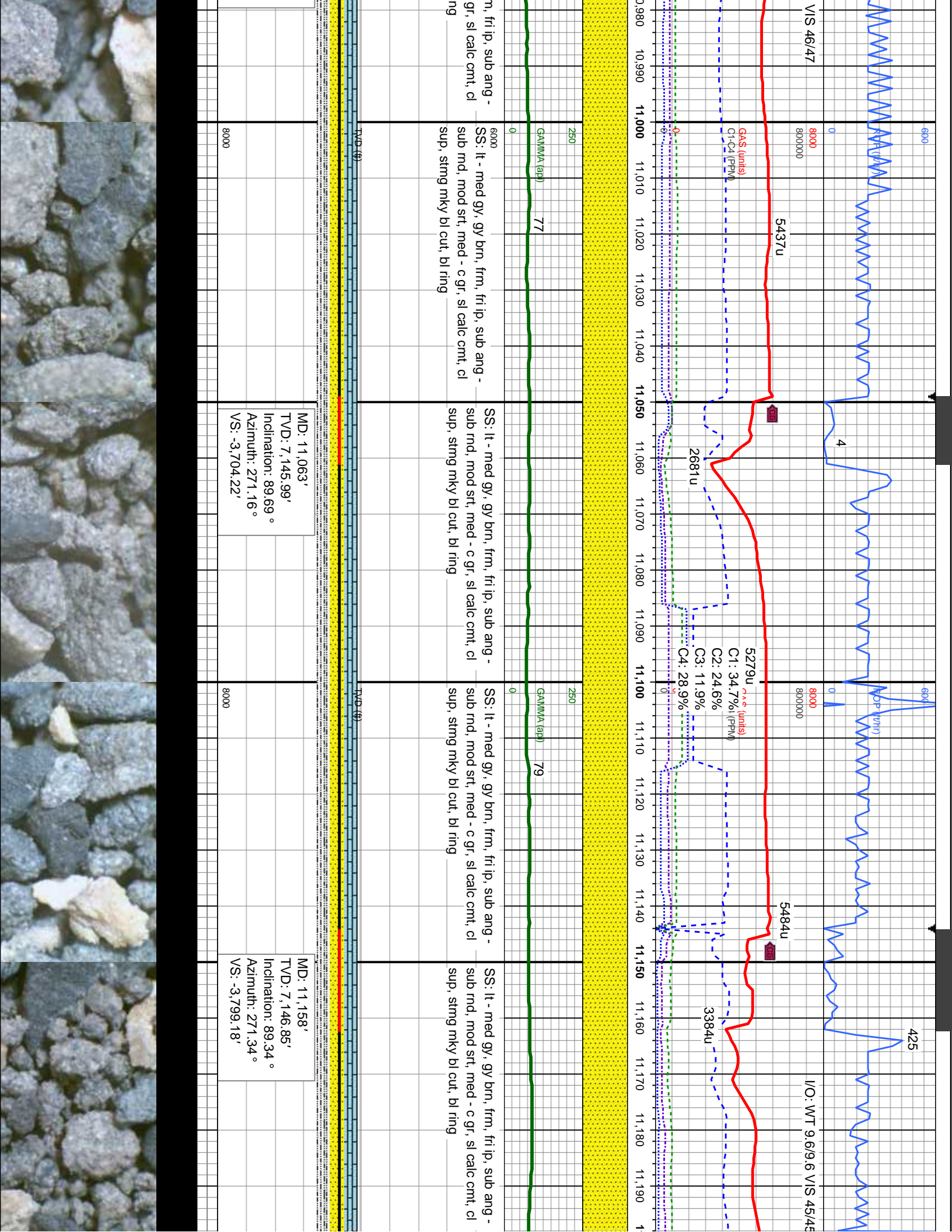
SS: lt - med gy, gy brn, frm, fri lp, sub ang -  
sub rnd, mod srt, med gr, sl calc cnt, cl  
sup, sting mky bl cut, bl ring

SS: lt - med gy, gy brn, frm, fri lp, sub ang -  
sub rnd, mod srt, med gr, sl calc cnt, cl  
sup, sting mky bl cut, bl ring

SS: lt - med gy, gy brn, frm, fri lp, sub ang -  
sub rnd, mod srt, med - c  
sup, sting mky bl cut, bl ri

MD: 10,780' TVD: 7,143.51' Inclination: 89.6 ° Azimuth: 272.52 ° VS: 3,421.59'	8000	MD: 10,874' TVD: 7,144.45' Inclination: 89.25 ° Azimuth: 271.6 ° VS: 3,515.5'	8000	MD: 10,969' TVD: 7,145.4' Inclination: 89.6 ° Azimuth: 270.33 ° VS: -3,610.24'
--	------	---	------	--





VIS 46/47

8000

5437u

GAS (units)  
C1-C4 (PPM)

2681u

5279u

C1: 34.7%  
C2: 24.6%  
C3: 11.9%  
C4: 28.9%

5484u

3384u

I/O: WT 9.6/9.6 VIS 45/45

425

SS: lt - med gy, gy brn, frm, fri lp, sub ang -  
sub rnd, mod srt, med - c gr, sl calc cnt, cl  
sup, stmg mky bl cut, bl ring

SS: lt - med gy, gy brn, frm, fri lp, sub ang -  
sub rnd, mod srt, med - c gr, sl calc cnt, cl  
sup, stmg mky bl cut, bl ring

SS: lt - med gy, gy brn, frm, fri lp, sub ang -  
sub rnd, mod srt, med - c gr, sl calc cnt, cl  
sup, stmg mky bl cut, bl ring

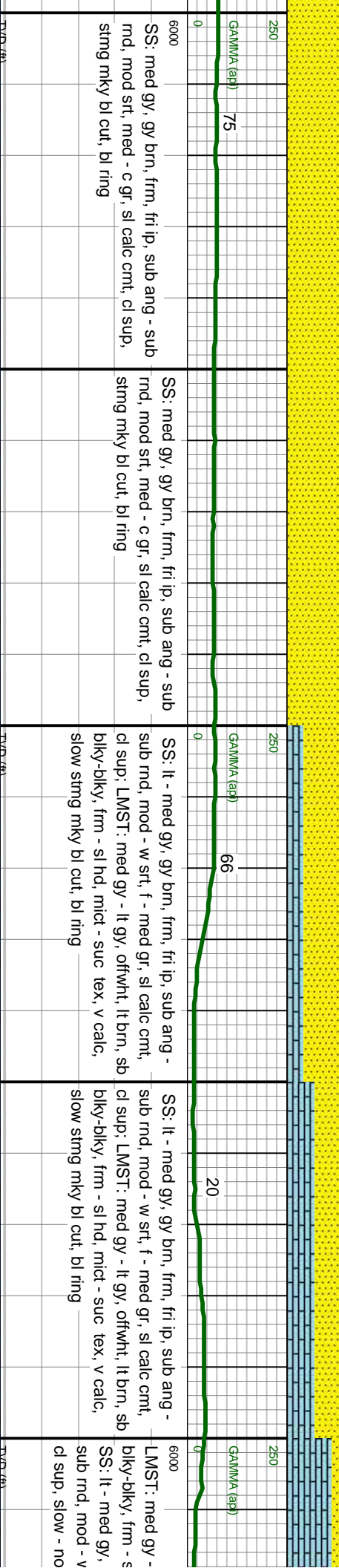
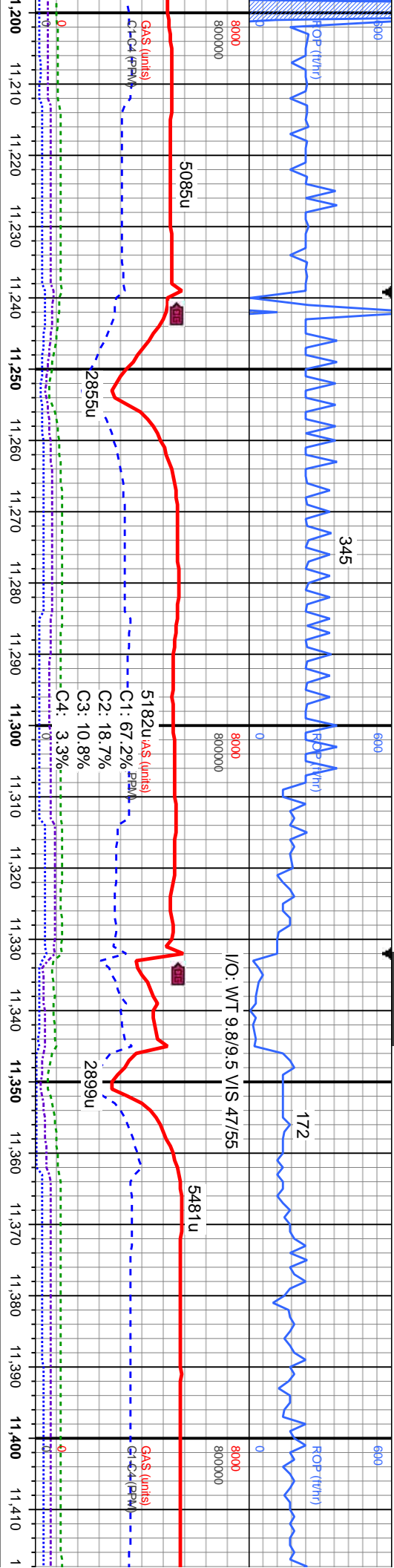
SS: lt - med gy, gy brn, frm, fri lp, sub ang -  
sub rnd, mod srt, med - c gr, sl calc cnt, cl  
sup, stmg mky bl cut, bl ring

SS: lt - med gy, gy brn, frm, fri lp, sub ang -  
sub rnd, mod srt, med - c gr, sl calc cnt, cl  
sup, stmg mky bl cut, bl ring

MD: 11,063'  
TVD: 7,145.99'  
Inclination: 89.69 °  
Azimuth: 271.16 °  
VS: -3,704.22'

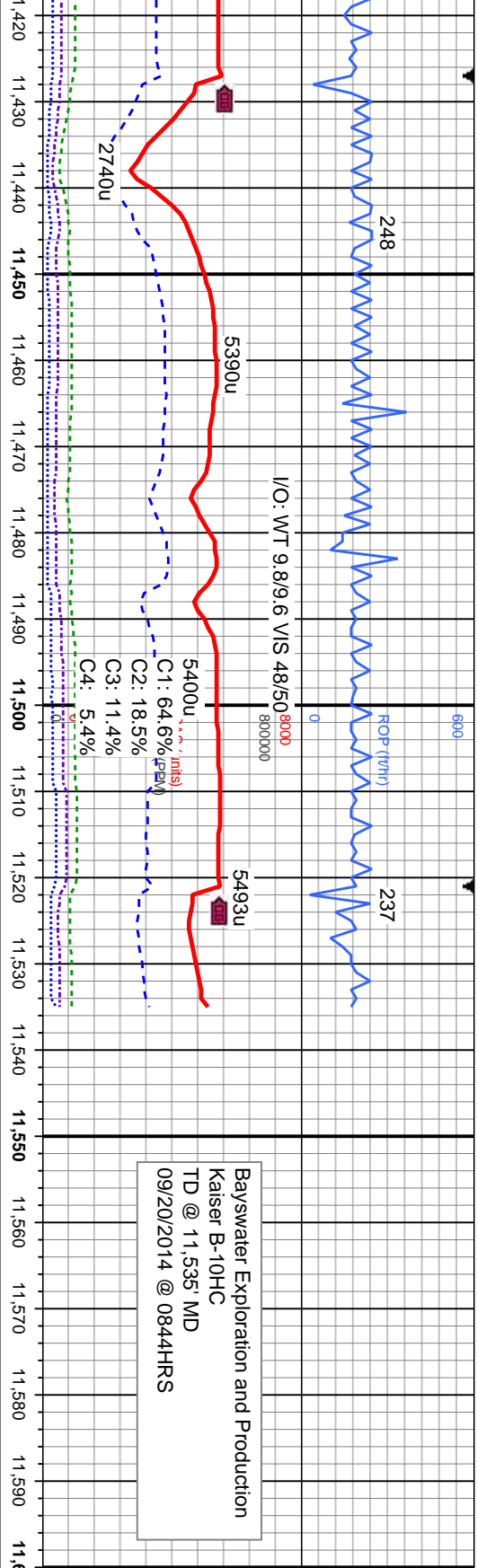
MD: 11,158'  
TVD: 7,146.85'  
Inclination: 89.34 °  
Azimuth: 271.34 °  
VS: -3,799.18'





SS: med gy, gy brn, frm, fri ip, sub ang - sub rnd, mod srt, med - c gr, sl calc cnt, ci sup, sting mky bl cut, bl ring	SS: It - med gy, gy brn, frm, fri ip, sub ang - sub rnd, mod - w srt, f - med gr, sl calc cnt, ci sup; LMST: med gy - lt gy, offwht, lt brn, sb blkly-blky, frm - sl hd, mict - suc tex, v calc, slow sting mky bl cut, bl ring	SS: It - med gy, gy brn, frm, fri ip, sub ang - sub rnd, mod - w srt, f - med gr, sl calc cnt, ci sup; LMST: med gy - lt gy, offwht, lt brn, sb blkly-blky, frm - sl hd, mict - suc tex, v calc, slow sting mky bl cut, bl ring	LMST: med gy - blkly-blky, frm - s SS: It - med gy, sub rnd, mod - v ci sup, slow
MD: 11,251' TVD: 7,147.49' Inclination: 89.87 ° Azimuth: 271.85 ° VS: -3,892.12'	MD: 11,346' TVD: 7,148.44' Inclination: 88.99 ° Azimuth: 272.08 ° VS: -3,987.03'		





18	lt gy, offwht, lt brn, sb blky, mict - suc tex, v calc; gy brn, frm, fri ip, sub ang - v srt, f - med gr, sl calc cnt, cut, bl ring	LMST: med gy - lt gy, offwht, lt brn, sb blky-blky, frm - sl hd, mict - suc tex, v calc, slow - no cut, dul bl ring	LMST: med gy - lt gy, offwht, lt brn, sb blky-blky, frm - sl hd, mict - suc tex, v calc, slow - no cut, dul bl ring	PROJECTION TO BIT	THANK YOU FOR CHOOSING COLUMBINE LOGGING INC.
MD: 11,453' TVD: 7,150.32' Inclination: 88.99 ° Azimuth: 271.37° VS: 4,094.14'					
MD: 11,535' TVD: 7,151.76' Inclination: 88.99 ° Azimuth: 271.37° VS: 4,176.09'					

