

Bayswater Exploration & Production, LLC

Well Name: **Kaiser A-10HN**

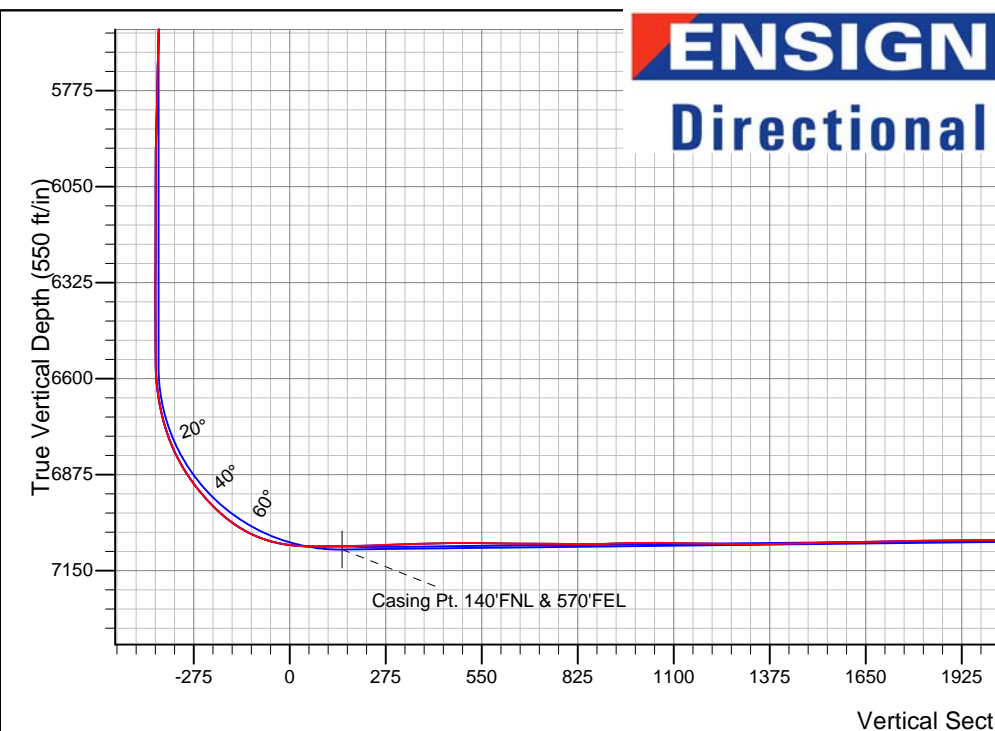
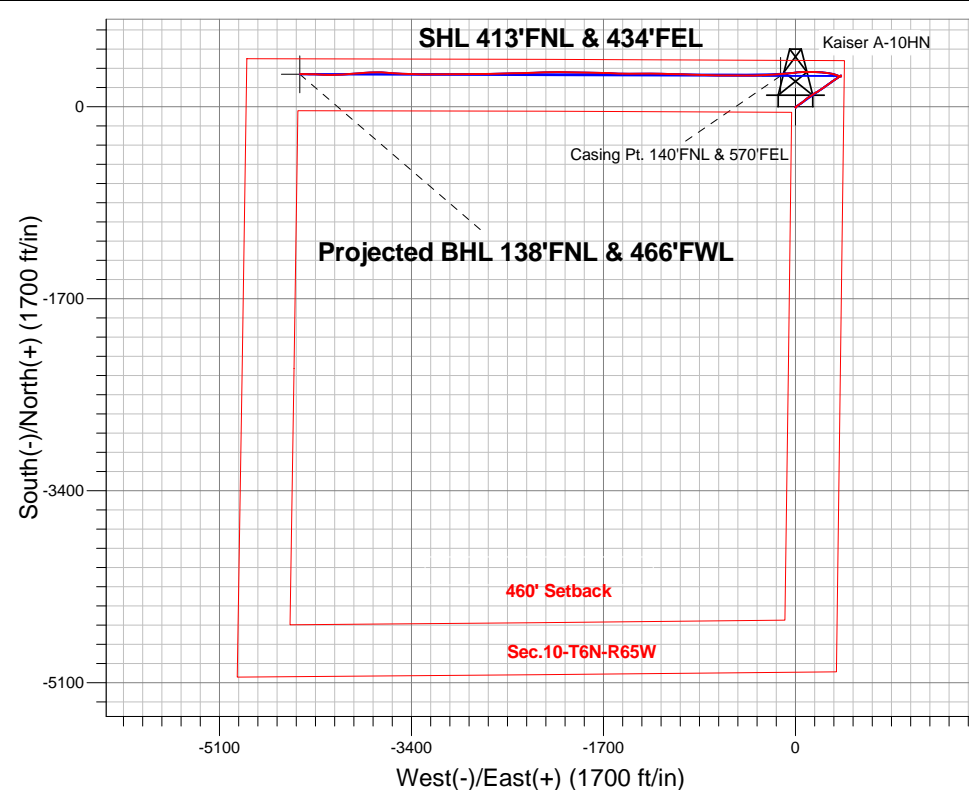
Surface Location: Kaiser 10-D Pad Sec.10-T6N-R65W
North American Datum 1983 , US State Plane 1983 , Colorado Northern Zone

Ground Elevation: 4801.0

+N/-S	+E/-W	Northing	Easting	Latitude	Longitude	Slot
0.0	0.0	1428828.34	3238745.72	40.507362	-104.641403	
RKB - 22.5' WELL @ 4823.5ft (RKB - 22.5')						

FINAL SURVEY

Projected Bottom Hole Location
11705'MD 7041'TVD 290'N & 4388'W of SHL
90.3 degree Incl @ 271.0 degree AZM



Kaiser 10-D Pad Sec.10-T6N-R65W
Kaiser A-10HN
Wellbore #1
9:25, September 25 2014

ANNOTATIONS

No annotation data is available.

LEGEND

- ◆ Kaiser A-10HN, Wellbore #1, Plan #2 (8-8-14) V0
- Kaiser A-10HN, Wellbore #1, Plan #3 (9-22-14) V0
- Wellbore #1
- Survey #1

BHL 138'FNL & 466'FWL



Bayswater Exploration & Production, LLC

SEC.10-T6N-R65W

Kaiser 10-D Pad Sec.10-T6N-R65W

Kaiser A-10HN

Wellbore #1

Survey: Survey #1

Standard Survey Report

25 September, 2014



BAYSWATER
EXPLORATION & PRODUCTION, LLC

Company:	Bayswater Exploration & Production, LLC	Local Co-ordinate Reference:	Well Kaiser A-10HN
Project:	SEC.10-T6N-R65W	TVD Reference:	WELL @ 4823.5ft (RKB - 22.5')
Site:	Kaiser 10-D Pad Sec.10-T6N-R65W	MD Reference:	WELL @ 4823.5ft (RKB - 22.5')
Well:	Kaiser A-10HN	North Reference:	True
Wellbore:	Wellbore #1	Survey Calculation Method:	Minimum Curvature
Design:	Wellbore #1	Database:	Landmark

Project	SEC.10-T6N-R65W		
Map System:	US State Plane 1983	System Datum:	Mean Sea Level
Geo Datum:	North American Datum 1983		Using Well Reference Point
Map Zone:	Colorado Northern Zone		Using geodetic scale factor

Site	Kaiser 10-D Pad Sec.10-T6N-R65W		
Site Position:		Northing:	1,428,828.36ft
From:	Lat/Long	Easting:	3,238,745.72ft
Position Uncertainty:	0.0 ft	Slot Radius:	"
		Latitude:	40.507362
		Longitude:	-104.641403
		Grid Convergence:	0.55 °

Well	Kaiser A-10HN		
Well Position	+N/-S	0.0 ft	Northing: 1,428,828.34 ft
	+E/-W	0.0 ft	Easting: 3,238,745.72 ft
Position Uncertainty	0.0 ft	Wellhead Elevation:	ft
		Latitude:	40.507362
		Longitude:	-104.641403
		Ground Level:	4,801.0ft

Wellbore	Wellbore #1		
Magnetics	Model Name	Sample Date	Declination (°)
	IGRF2010	7/28/2014	8.39
			Dip Angle (°) 67.05
			Field Strength (nT) 52,872

Design	Wellbore #1		
Audit Notes:			
Version:	1.0	Phase:	ACTUAL
		Tie On Depth:	0.0
Vertical Section:	Depth From (TVD) (ft)	+N/-S (ft)	+E/-W (ft)
	0.0	0.0	0.0
			Direction (°) 273.75

Survey Program	Date 9/25/2014		
From (ft)	To (ft)	Survey (Wellbore)	Tool Name
131.0	11,705.0	Survey #1 (Wellbore #1)	MWD
			Description MWD - Standard

Survey										
Measured Depth (ft)	Inclination (°)	Azimuth (°)	Vertical Depth (ft)	+N/-S (ft)	+E/-W (ft)	Vertical Section (ft)	Dogleg Rate (°/100ft)	Build Rate (°/100ft)	Turn Rate (°/100ft)	
0.0	0.00	0.00	0.0	0.0	0.0	0.0	0.00	0.00	0.00	
1.0	0.00	0.00	1.0	0.0	0.0	0.0	0.00	0.00	0.00	
SHL 413'FNL & 434'FEL										
131.0	0.00	150.60	131.0	0.0	0.0	0.0	0.00	0.00	0.00	
223.0	0.20	174.50	223.0	-0.2	0.0	0.0	0.22	0.22	0.00	
315.0	0.10	181.20	315.0	-0.4	0.0	-0.1	0.11	-0.11	7.28	
407.0	0.30	154.70	407.0	-0.7	0.1	-0.2	0.23	0.22	-28.80	
499.0	0.40	133.20	499.0	-1.1	0.5	-0.5	0.18	0.11	-23.37	
592.0	0.60	145.70	592.0	-1.8	1.0	-1.1	0.24	0.22	13.44	
684.0	0.90	187.20	684.0	-2.9	1.2	-1.3	0.65	0.33	45.11	
708.0	1.00	189.10	708.0	-3.3	1.1	-1.3	0.44	0.42	7.92	
827.0	0.40	112.00	827.0	-4.4	1.3	-1.6	0.83	-0.50	-64.79	
923.0	0.20	156.80	923.0	-4.7	1.7	-2.0	0.31	-0.21	46.67	

Company:	Bayswater Exploration & Production, LLC	Local Co-ordinate Reference:	Well Kaiser A-10HN
Project:	SEC.10-T6N-R65W	TVD Reference:	WELL @ 4823.5ft (RKB - 22.5')
Site:	Kaiser 10-D Pad Sec.10-T6N-R65W	MD Reference:	WELL @ 4823.5ft (RKB - 22.5')
Well:	Kaiser A-10HN	North Reference:	True
Wellbore:	Wellbore #1	Survey Calculation Method:	Minimum Curvature
Design:	Wellbore #1	Database:	Landmark

Survey

Measured Depth (ft)	Inclination (°)	Azimuth (°)	Vertical Depth (ft)	+N/-S (ft)	+E/-W (ft)	Vertical Section (ft)	Dogleg Rate (°/100ft)	Build Rate (°/100ft)	Turn Rate (°/100ft)
1,015.0	0.10	322.50	1,015.0	-4.8	1.7	-2.0	0.32	-0.11	180.11
1,107.0	0.10	173.70	1,107.0	-4.8	1.7	-2.0	0.21	0.00	-161.74
1,199.0	0.60	98.20	1,199.0	-5.0	2.2	-2.5	0.63	0.54	-82.07
1,291.0	0.20	311.30	1,291.0	-4.9	2.5	-2.8	0.84	-0.43	-159.67
1,384.0	0.40	276.70	1,384.0	-4.8	2.1	-2.4	0.28	0.22	-37.20
1,476.0	1.50	52.50	1,476.0	-4.0	2.7	-3.0	1.97	1.20	147.61
1,568.0	3.20	33.70	1,567.9	-1.2	5.1	-5.2	2.00	1.85	-20.43
1,660.0	4.30	44.30	1,659.7	3.4	8.9	-8.7	1.41	1.20	11.52
1,752.0	4.30	56.90	1,751.4	7.8	14.2	-13.7	1.02	0.00	13.70
1,844.0	5.50	55.50	1,843.1	12.2	20.7	-19.9	1.31	1.30	-1.52
1,937.0	5.80	50.60	1,935.6	17.7	28.0	-26.8	0.61	0.32	-5.27
2,029.0	5.30	54.70	2,027.2	23.1	35.1	-33.5	0.69	-0.54	4.46
2,121.0	6.20	64.80	2,118.7	27.7	43.1	-41.2	1.47	0.98	10.98
2,213.0	5.50	51.50	2,210.3	32.5	51.0	-48.8	1.65	-0.76	-14.46
2,305.0	6.50	55.20	2,301.8	38.2	58.7	-56.1	1.16	1.09	4.02
2,401.0	8.30	52.90	2,397.0	45.5	68.7	-65.6	1.90	1.88	-2.40
2,496.0	7.00	46.60	2,491.1	53.6	78.4	-74.7	1.63	-1.37	-6.63
2,591.0	7.30	49.70	2,585.4	61.5	87.2	-83.0	0.51	0.32	3.26
2,687.0	9.60	52.50	2,680.3	70.3	98.2	-93.4	2.43	2.40	2.92
2,782.0	9.10	50.30	2,774.1	80.0	110.3	-104.8	0.65	-0.53	-2.32
2,877.0	9.10	55.70	2,867.9	89.0	122.3	-116.2	0.90	0.00	5.68
2,973.0	9.70	62.00	2,962.6	97.1	135.7	-129.0	1.24	0.63	6.56
3,068.0	9.60	58.20	3,056.2	105.0	149.5	-142.3	0.68	-0.11	-4.00
3,163.0	8.00	51.00	3,150.1	113.3	161.4	-153.6	2.04	-1.68	-7.58
3,258.0	8.50	58.20	3,244.1	121.2	172.5	-164.2	1.21	0.53	7.58
3,354.0	7.70	60.80	3,339.2	128.1	184.1	-175.3	0.92	-0.83	2.71
3,449.0	6.20	58.70	3,433.5	133.8	194.0	-184.9	1.60	-1.58	-2.21
3,544.0	6.20	59.00	3,527.9	139.1	202.8	-193.3	0.03	0.00	0.32
3,639.0	7.60	60.30	3,622.2	144.9	212.7	-202.7	1.48	1.47	1.37
3,735.0	7.30	55.40	3,717.4	151.5	223.2	-212.8	0.73	-0.31	-5.10
3,830.0	7.30	58.30	3,811.7	158.1	233.3	-222.5	0.39	0.00	3.05
3,925.0	7.20	53.40	3,905.9	164.8	243.2	-231.9	0.66	-0.11	-5.16
4,020.0	7.60	46.90	4,000.1	172.7	252.6	-240.8	0.98	0.42	-6.84
4,115.0	7.60	58.00	4,094.3	180.3	262.5	-250.2	1.54	0.00	11.68
4,211.0	7.70	56.10	4,189.4	187.2	273.2	-260.4	0.28	0.10	-1.98
4,306.0	6.90	54.50	4,283.7	194.1	283.2	-269.9	0.87	-0.84	-1.68
4,401.0	8.00	54.30	4,377.9	201.3	293.2	-279.4	1.16	1.16	-0.21
4,496.0	7.80	54.80	4,472.0	208.9	303.8	-289.5	0.22	-0.21	0.53
4,592.0	7.30	53.90	4,567.1	216.2	314.1	-299.2	0.54	-0.52	-0.94
4,687.0	6.00	56.90	4,661.5	222.5	323.1	-307.9	1.42	-1.37	3.16
4,782.0	6.50	52.70	4,755.9	228.4	331.5	-315.9	0.71	0.53	-4.42
4,878.0	6.90	57.50	4,851.3	234.8	340.7	-324.6	0.72	0.42	5.00
4,973.0	7.60	58.00	4,945.5	241.2	350.9	-334.3	0.74	0.74	0.53
5,068.0	6.90	54.30	5,039.7	247.9	360.8	-343.8	0.89	-0.74	-3.89
5,163.0	6.20	52.70	5,134.1	254.3	369.5	-352.1	0.76	-0.74	-1.68
5,259.0	5.50	49.20	5,229.6	260.5	377.1	-359.3	0.82	-0.73	-3.65
5,354.0	4.70	51.10	5,324.2	265.9	383.6	-365.4	0.86	-0.84	2.00
5,449.0	3.10	62.90	5,419.0	269.5	388.9	-370.5	1.88	-1.68	12.42
5,545.0	1.40	33.40	5,514.9	271.7	391.9	-373.3	2.09	-1.77	-30.73
5,640.0	1.50	72.10	5,609.9	273.0	393.7	-375.0	1.02	0.11	40.74
5,735.0	1.70	71.50	5,704.9	273.9	396.2	-377.5	0.21	0.21	-0.63
5,830.0	1.60	56.40	5,799.8	275.0	398.7	-379.8	0.47	-0.11	-15.89
5,925.0	1.70	63.80	5,894.8	276.4	401.0	-382.1	0.25	0.11	7.79
6,020.0	0.60	41.80	5,989.8	277.4	402.6	-383.6	1.23	-1.16	-23.16

Company:	Bayswater Exploration & Production, LLC	Local Co-ordinate Reference:	Well Kaiser A-10HN
Project:	SEC.10-T6N-R65W	TVD Reference:	WELL @ 4823.5ft (RKB - 22.5')
Site:	Kaiser 10-D Pad Sec.10-T6N-R65W	MD Reference:	WELL @ 4823.5ft (RKB - 22.5')
Well:	Kaiser A-10HN	North Reference:	True
Wellbore:	Wellbore #1	Survey Calculation Method:	Minimum Curvature
Design:	Wellbore #1	Database:	Landmark

Survey

Measured Depth (ft)	Inclination (°)	Azimuth (°)	Vertical Depth (ft)	+N/-S (ft)	+E/-W (ft)	Vertical Section (ft)	Dogleg Rate (°/100ft)	Build Rate (°/100ft)	Turn Rate (°/100ft)
6,116.0	1.10	188.10	6,085.8	276.8	402.9	-383.9	1.70	0.52	152.40
6,211.0	1.10	175.40	6,180.8	275.0	402.8	-383.9	0.26	0.00	-13.37
6,306.0	1.10	157.70	6,275.7	273.3	403.2	-384.5	0.36	0.00	-18.63
6,401.0	0.60	206.90	6,370.7	272.0	403.3	-384.7	0.89	-0.53	51.79
6,497.0	0.80	200.70	6,466.7	270.9	402.9	-384.3	0.22	0.21	-6.46
6,592.0	1.20	218.00	6,561.7	269.5	402.0	-383.5	0.52	0.42	18.21
6,640.0	5.10	270.00	6,609.6	269.1	399.6	-381.1	9.30	8.13	108.33
6,687.0	9.10	280.40	6,656.3	269.8	393.8	-375.3	8.91	8.51	22.13
6,735.0	13.70	288.10	6,703.3	272.2	384.7	-366.1	10.07	9.58	16.04
6,782.0	18.60	290.50	6,748.4	276.6	372.4	-353.5	10.52	10.43	5.11
6,830.0	23.50	289.10	6,793.2	282.4	356.1	-336.9	10.26	10.21	-2.92
6,877.0	28.80	285.80	6,835.4	288.6	336.4	-316.8	11.69	11.28	-7.02
6,925.0	34.00	280.20	6,876.4	294.1	312.0	-292.1	12.41	10.83	-11.67
6,972.0	38.30	278.40	6,914.3	298.6	284.7	-264.5	9.42	9.15	-3.83
7,020.0	42.60	276.10	6,950.8	302.5	253.8	-233.5	9.48	8.96	-4.79
7,068.0	47.70	273.30	6,984.7	305.2	219.9	-199.4	11.40	10.63	-5.83
7,163.0	62.20	270.90	7,039.1	307.9	142.4	-121.9	15.40	15.26	-2.53
7,258.0	78.10	268.20	7,071.3	307.1	53.3	-33.1	16.95	16.74	-2.84
7,305.0	84.80	263.30	7,078.2	303.6	7.0	12.9	17.59	14.26	-10.43
7,373.0	90.60	265.40	7,081.0	297.0	-60.6	79.9	9.07	8.53	3.09
7,468.0	90.80	264.90	7,079.8	288.9	-155.2	173.8	0.57	0.21	-0.53
7,562.0	92.50	266.80	7,077.1	282.1	-248.9	266.9	2.71	1.81	2.02
7,657.0	91.60	268.20	7,073.7	278.0	-343.8	361.2	1.75	-0.95	1.47
7,751.0	91.20	269.80	7,071.4	276.3	-437.7	454.9	1.75	-0.43	1.70
7,845.0	88.90	270.50	7,071.3	276.6	-531.7	548.7	2.56	-2.45	0.74
7,940.0	89.60	271.40	7,072.6	278.2	-626.7	643.6	1.20	0.74	0.95
8,034.0	89.50	271.40	7,073.3	280.5	-720.7	737.5	0.11	-0.11	0.00
8,129.0	89.50	270.10	7,074.1	281.7	-815.6	832.3	1.37	0.00	-1.37
8,223.0	92.20	272.20	7,072.7	283.6	-909.6	926.2	3.64	2.87	2.23
8,317.0	90.00	271.90	7,070.9	287.0	-1,003.5	1,020.1	2.36	-2.34	-0.32
8,412.0	89.40	271.40	7,071.4	289.7	-1,098.5	1,115.1	0.82	-0.63	-0.53
8,506.0	88.60	271.70	7,073.1	292.2	-1,192.4	1,209.0	0.91	-0.85	0.32
8,600.0	89.60	270.50	7,074.5	294.0	-1,286.4	1,302.9	1.66	1.06	-1.28
8,695.0	91.50	269.60	7,073.6	294.1	-1,381.4	1,397.7	2.21	2.00	-0.95
8,789.0	91.40	269.60	7,071.3	293.5	-1,475.4	1,491.4	0.11	-0.11	0.00
8,883.0	91.30	272.40	7,069.0	295.1	-1,569.3	1,585.3	2.98	-0.11	2.98
8,978.0	91.10	272.10	7,067.1	298.8	-1,664.2	1,680.2	0.38	-0.21	-0.32
9,072.0	90.60	271.00	7,065.7	301.4	-1,758.2	1,774.1	1.29	-0.53	-1.17
9,167.0	90.80	271.50	7,064.5	303.4	-1,853.1	1,869.0	0.57	0.21	0.53
9,261.0	91.20	271.00	7,062.9	305.5	-1,947.1	1,962.9	0.68	0.43	-0.53
9,355.0	88.70	270.70	7,062.9	306.9	-2,041.1	2,056.8	2.68	-2.66	-0.32
9,450.0	89.40	269.10	7,064.5	306.7	-2,136.1	2,151.6	1.84	0.74	-1.68
9,544.0	89.40	267.70	7,065.5	304.1	-2,230.0	2,245.1	1.49	0.00	-1.49
9,639.0	91.90	268.20	7,064.4	300.7	-2,324.9	2,339.6	2.68	2.63	0.53
9,733.0	91.10	268.20	7,062.0	297.7	-2,418.9	2,433.2	0.85	-0.85	0.00
9,828.0	90.00	269.20	7,061.0	295.6	-2,513.8	2,527.8	1.56	-1.16	1.05
9,922.0	89.60	268.70	7,061.4	293.9	-2,607.8	2,621.5	0.68	-0.43	-0.53
10,017.0	89.00	268.50	7,062.5	291.5	-2,702.8	2,716.1	0.67	-0.63	-0.21
10,111.0	88.40	270.00	7,064.7	290.3	-2,796.7	2,809.8	1.72	-0.64	1.60
10,206.0	90.70	270.10	7,065.4	290.4	-2,891.7	2,904.5	2.42	2.42	0.11
10,300.0	90.50	268.70	7,064.4	289.4	-2,985.7	2,998.3	1.50	-0.21	-1.49
10,395.0	91.80	268.70	7,062.5	287.3	-3,080.7	3,092.9	1.37	1.37	0.00
10,489.0	92.40	270.10	7,059.1	286.3	-3,174.6	3,186.5	1.62	0.64	1.49
10,583.0	92.20	270.00	7,055.3	286.4	-3,268.5	3,280.3	0.24	-0.21	-0.11

Company:	Bayswater Exploration & Production, LLC	Local Co-ordinate Reference:	Well Kaiser A-10HN
Project:	SEC.10-T6N-R65W	TVD Reference:	WELL @ 4823.5ft (RKB - 22.5')
Site:	Kaiser 10-D Pad Sec.10-T6N-R65W	MD Reference:	WELL @ 4823.5ft (RKB - 22.5')
Well:	Kaiser A-10HN	North Reference:	True
Wellbore:	Wellbore #1	Survey Calculation Method:	Minimum Curvature
Design:	Wellbore #1	Database:	Landmark

Survey									
Measured Depth (ft)	Inclination (°)	Azimuth (°)	Vertical Depth (ft)	+N/-S (ft)	+E/-W (ft)	Vertical Section (ft)	Dogleg Rate (°/100ft)	Build Rate (°/100ft)	Turn Rate (°/100ft)
10,678.0	91.90	272.60	7,051.9	288.5	-3,363.4	3,375.1	2.75	-0.32	2.74
10,772.0	91.90	272.90	7,048.8	293.0	-3,457.3	3,469.0	0.32	0.00	0.32
10,867.0	92.30	273.80	7,045.3	298.6	-3,552.1	3,564.0	1.04	0.42	0.95
10,961.0	89.30	272.20	7,044.0	303.5	-3,645.9	3,657.9	3.62	-3.19	-1.70
11,056.0	85.60	269.40	7,048.2	304.8	-3,740.8	3,752.7	4.88	-3.89	-2.95
11,150.0	88.40	264.90	7,053.1	300.1	-3,834.5	3,845.9	5.63	2.98	-4.79
11,244.0	92.20	264.20	7,052.7	291.2	-3,928.0	3,938.7	4.11	4.04	-0.74
11,339.0	93.80	268.20	7,047.7	284.9	-4,022.7	4,032.7	4.53	1.68	4.21
11,433.0	92.10	270.50	7,042.8	283.9	-4,116.5	4,126.3	3.04	-1.81	2.45
11,527.0	90.00	272.10	7,041.1	286.0	-4,210.5	4,220.2	2.81	-2.23	1.70
11,622.0	90.00	270.80	7,041.1	288.4	-4,305.5	4,315.1	1.37	0.00	-1.37
11,650.0	90.30	271.00	7,041.0	288.8	-4,333.5	4,343.1	1.29	1.07	0.71
11,705.0	90.30	271.00	7,040.8	289.8	-4,388.5	4,398.0	0.00	0.00	0.00
BHL 140'FNL & 465'FWL									

Checked By: _____ Approved By: _____ Date: _____