

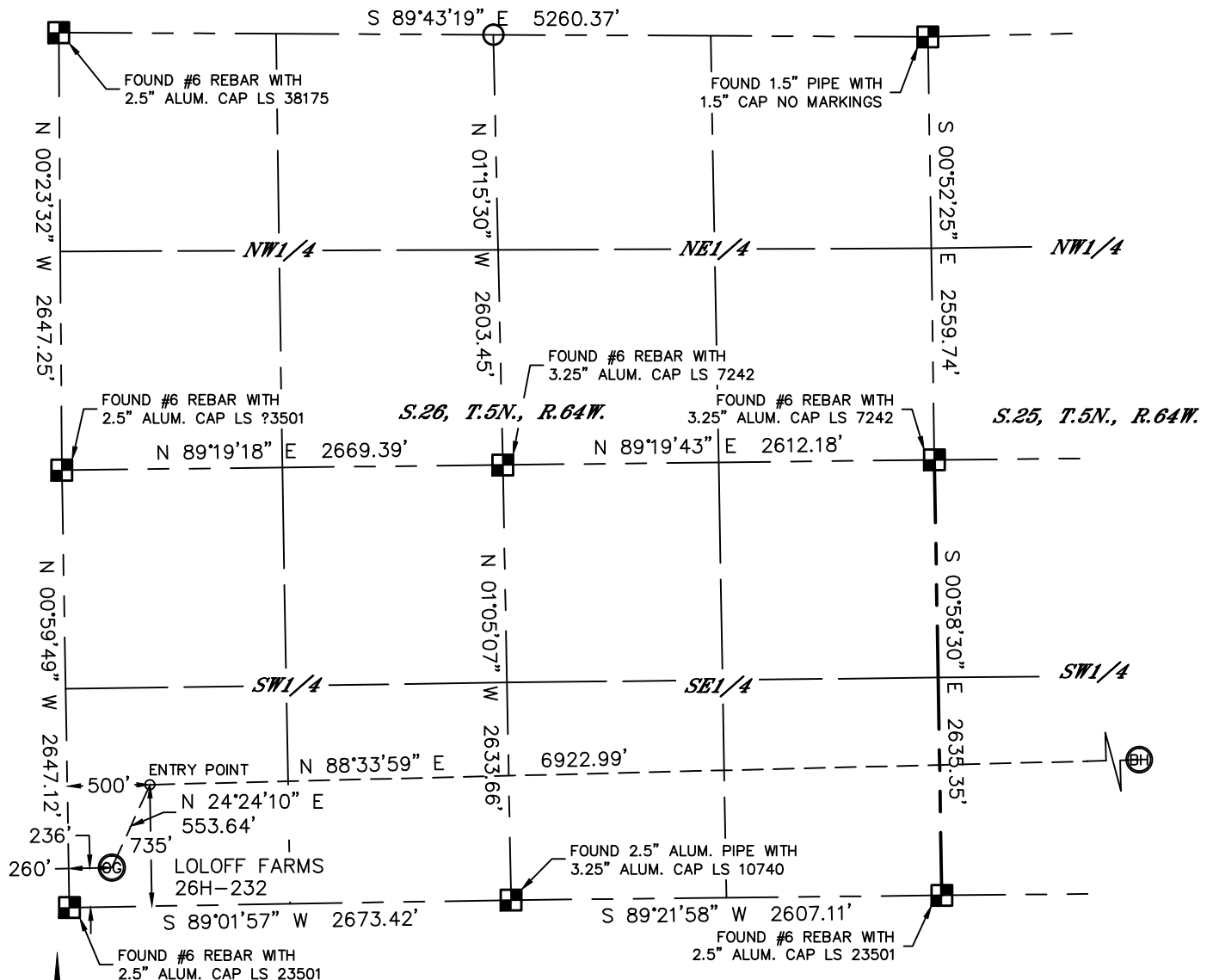


Lat40°, Inc. 1635 Foxtrail Drive, Suite 325 Loveland, CO 970-776-3321

WELL LOCATION CERTIFICATE

THIS MAP DOES NOT REPRESENT A BOUNDARY SURVEY

SECTION: 26
TOWNSHIP: 5N
RANGE: 64W



In accordance with a request from Al Bragg with PDC ENERGY

Lat40°, Inc. has determined the surface location of the LOLOFF FARMS 26H-232 to be 236' from the SOUTH line and 260' from the WEST line as measured at right angles from the section lines of Section 26, Township 5 North, Range 64 West and the bottom hole to be 822' from the SOUTH line and 2142' from the WEST line as measured at right angles from the section lines of Section 25, Township 5 North, Range 64 West of the Sixth Principal Meridian, County of Weld, State of Colorado.

I hereby state that this Well Location Certificate was prepared by me, or under my direct supervision, that the fieldwork was completed on 6/24/2014, for and on behalf of PDC ENERGY. That this is not a Land Survey Plat or an Improvement Survey Plat, and that it is not to be relied upon for establishment of fence, building, or other future improvement lines.

SURFACE LOCATION

LAT: 40.36377N
LONG: 104.52542W
PDOP: 2.1
ELEV: 4678'
1/4,1/4: SW1/4SW1/4

BOTTOM HOLE

LAT: 40.36540N
LONG: 104.49974W

ENTRY POINT

LAT: 40.36514N
LONG: 104.52457W

NOTE:

- 1) Bearings shown are Grid Bearings of the Colorado State Plane Coordinate System, North Zone, North American Datum 1983. The lineal dimensions as contained herein are based upon the "U.S. Survey Foot."
- 2) Ground elevations are based on an observed GPS elevation (NAVD 1988 DATUM).
- 3) IMPROVEMENTS: See LOCATION DRAWING for all visible improvements within 500' of disturbed area.
- 4) SURFACE USE: PASTURE
- 5) INSTRUMENT OPERATOR: WYATT HALL
- 6) NEAREST CULTURAL ITEMS:
BUILDING: ±341' SE
BUILDING UNIT: ±471' N
HIGH OCCUPANCY BUILDING UNIT: 5280'+
DESIGNATED OUTSIDE ACTIVITY AREA: 5280'+
PUBLIC ROAD: (CR 57) ±246' W
ABOVEGROUND UTILITY: ±200' S
RAILROAD: 5280'+
PROPERTY LINE: ±236' S

LEGEND

- = ALIQUOT MONUMENT AS DESCRIBED
○ = CALCULATED POSITION

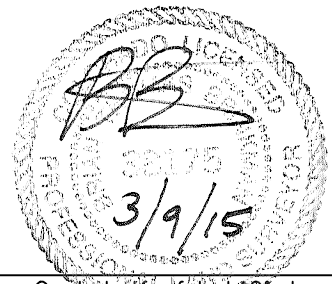
SHEET 1 OF 2

Brian T. Brinkman—On behalf of Lat40°, Inc.

Colorado Licensed Professional

Land Surveyor No. 38175

DATE: 3/9/2015
PROJECT#: 2014021



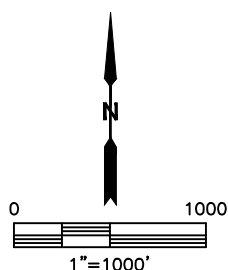
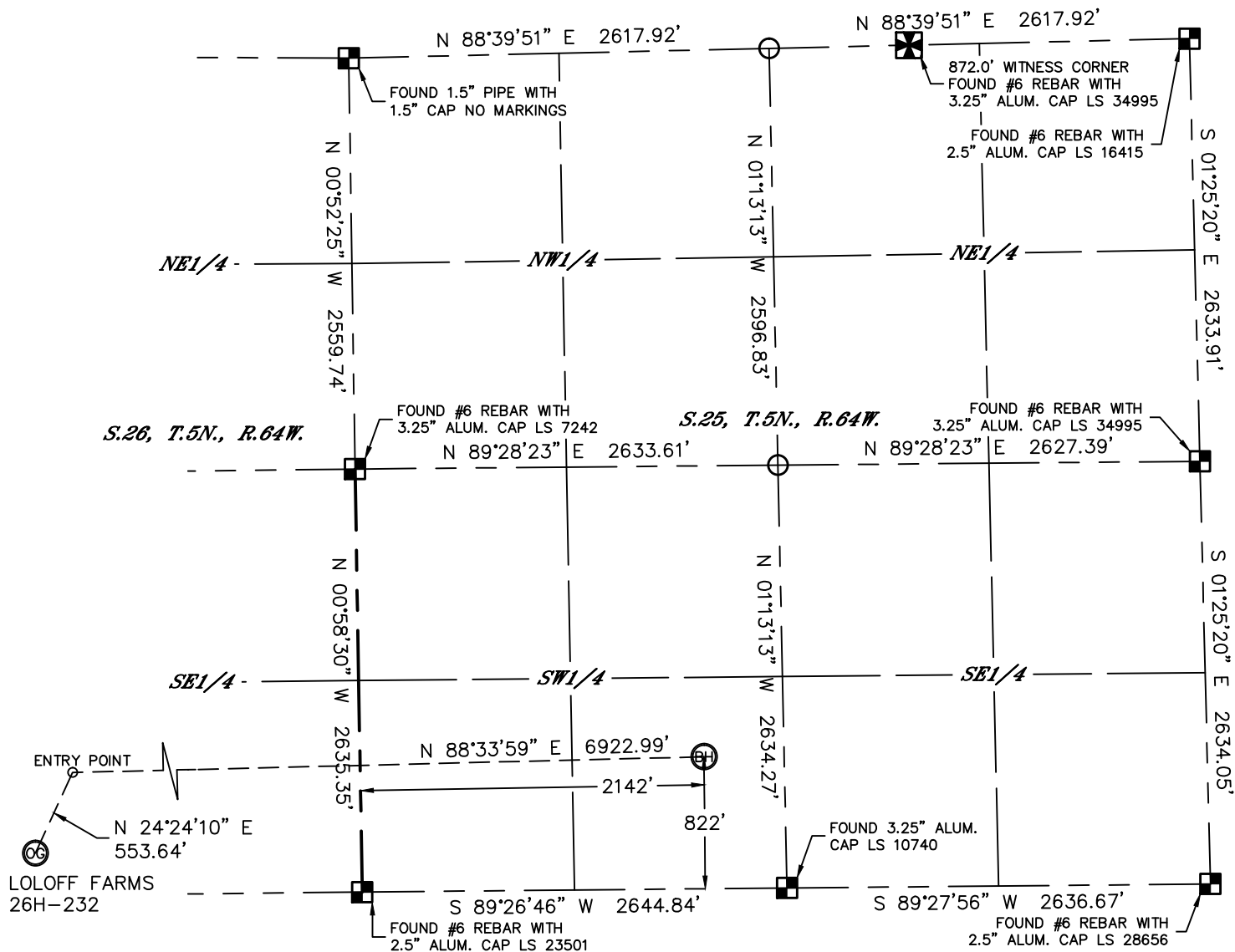


Lat40°, Inc. 1635 Foxtrail Drive, Suite 325 Loveland, CO 970-776-3321

WELL LOCATION CERTIFICATE

THIS MAP DOES NOT REPRESENT A BOUNDARY SURVEY

SECTION: 26
TOWNSHIP: 5N
RANGE: 64W

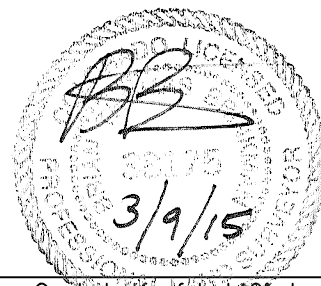


- LEGEND
- = ALIQUOT MONUMENT AS DESCRIBED
 - = CALCULATED POSITION

SHEET 2 OF 2

Brian T. Brinkman—On behalf of Lat40°, Inc.
Colorado Licensed Professional
Land Surveyor No. 38175

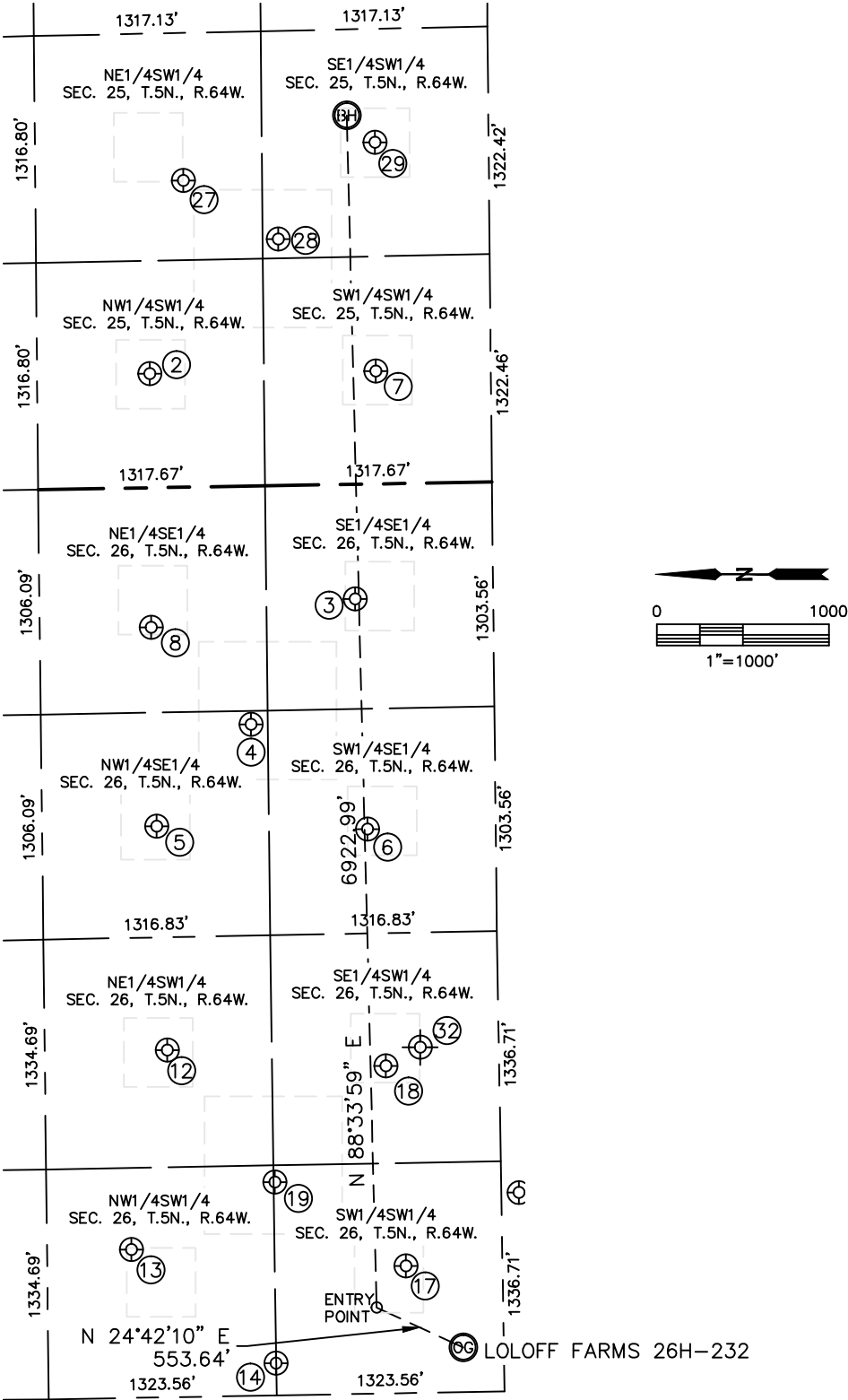
DATE: 3/9/2015
PROJECT#: 2014021





SITE SKETCH
LOLOFF FARMS 26H-232

SECTION: 26
TOWNSHIP: 5N
RANGE: 64W





Lat40°, Inc. 1635 Foxtrail Drive, Suite 325 Loveland, CO 970-776-3321

SITE SKETCH

LOLOFF FARMS 26H-232

SECTION: 26
TOWNSHIP: 5N
RANGE: 64W

| WELL NO. | WELL NAME | SHL FOOTAGE | | | | SHL LAT° | SHL LONG° | PDOP | ELEV (FT.) | 1/4/1/4 |
|----------|-----------------|-------------|-----|------|-----|----------|------------|------|------------|---------|
| 2 | LOUSTALET 13-25 | 1981 | FSL | 662 | FWL | 40.36859 | -104.50507 | 2.2 | 4589 | NWSW |
| 3 | SCHLAGEL 26-4 | 802 | FSL | 665 | FEL | 40.36536 | -104.50981 | 2.1 | 4590 | SESE |
| 4 | SCHLAGEL 5-26 | 1414 | FSL | 1383 | FEL | 40.36704 | -104.51240 | 2.1 | 4592 | NWSE |
| 5 | SCHLAGEL 26-2 | 1969 | FSL | 1966 | FEL | 40.36856 | -104.51450 | 2.0 | 4592 | NWSE |
| 6 | SCHLAGEL 26-1 | 745 | FSL | 2003 | FEL | 40.36520 | -104.51461 | 2.1 | 4611 | SWSE |
| 7 | LOUSTALET 25-1 | 668 | FSL | 656 | FWL | 40.36499 | -104.50506 | 2.1 | 4591 | SWSW |
| 8 | SCHLAGEL 26-3 | 1988 | FSL | 810 | FEL | 40.36861 | -104.51035 | 2.3 | 4592 | NESE |
| 12 | LOLOFF 1 | 1925 | FSL | 2016 | FWL | 40.36843 | -104.51916 | 1.8 | 4612 | NESW |
| 13 | LOLOFF 26-12 | 2153 | FSL | 860 | FWL | 40.36904 | -104.52331 | 1.5 | 4618 | NWSW |
| 14 | LOLOFF B 26-33 | 1324 | FSL | 187 | FWL | 40.36675 | -104.52571 | 1.5 | 4636 | NWSW |
| 17 | LOLOFF 2 | 560 | FSL | 738 | FWL | 40.36466 | -104.52371 | 1.5 | 4668 | NWNW |
| 18 | LOLOFF B 26-14X | 658 | FSL | 1901 | FWL | 40.36495 | -104.51954 | 1.7 | 4659 | SESW |
| 19 | LOLOFF B 26-25 | 1314 | FSL | 1238 | FWL | 40.36674 | -104.52194 | 1.8 | 4642 | SWSW |
| 27 | LOUSTALET 23-25 | 1774 | FSL | 1780 | FWL | 40.36802 | -104.50105 | 1.9 | 4586 | NESW |
| 28 | LOUSTALET 5 | 1228 | FSL | 1431 | FWL | 40.36652 | -104.50229 | 1.7 | 4584 | SESW |
| 29 | LOUSTALET 24-25 | 660 | FSL | 1983 | FWL | 40.36496 | -104.50030 | 1.8 | 4588 | SESW |
| 32 | LOLOFF 26-14 | 457 | FSL | 2006 | FWL | 40.36441 | -104.51909 | N/A | 4645 | SESW |

SHEET 2 OF 2

NOTE: THE ABANDONED WELL DATA SHOWN IN RED ABOVE WAS OBTAINED FROM COGCC SCOUT CARDS.

DATE: 3/9/2015
PROJECT#: 2014021