



DDC

3222 N. 6th Mile Rd  
Casper, WY 82604**RM-150045**

1":100' - TVD

1/20/2015 5:56:20 PM

**Oper. Company:** Noble Energy, Inc**Country:** United States**State / Province:** Colorado**County / Parish:** Weld**Started:** 01/16/2015 04:00 AM**API/UWI:** 05-123-39836**Field:** Wildcat**Well:** Gonsoulin State LD11-76HN**Rig:** H&P #326**Ended:** 01/20/2015 06:00 PM**Personnel****Day Hand:** Chris Abbott**Night Hand:** Boyd Wolff**Comp. Emp:** DDC**Location****Latitude:** 40° 46' 28.416 N**Longitude:** 103° 50' 6.756 W**Elev. GL:** 4739**Elev. DF:** 30**Elev. KB:** 4769**Hole Data**

Size	From	To
13 3/4	0	1226
8 3/4	1226	5935
6 1/8	5935	10851

**Casing Data**

Size	From	To
9 5/8	0	1218
7	0	5925

**Bit Sizes**

Size	From	To
13 3/4	0	1226
8 3/4	1226	5935
6 1/8	5935	10851

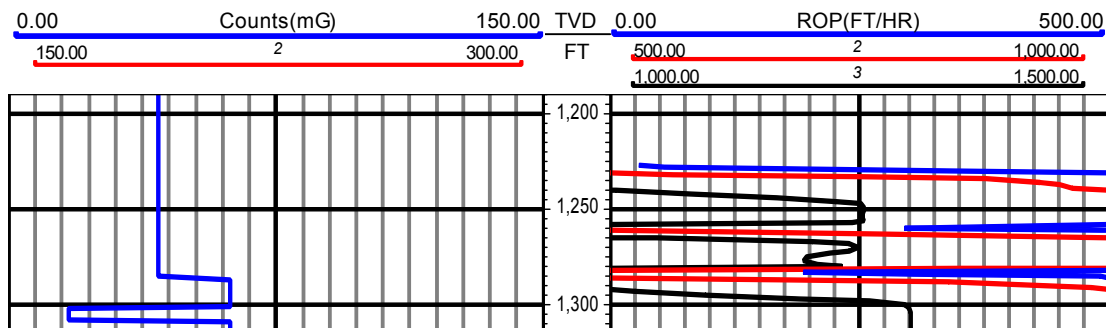
**Mud Data**

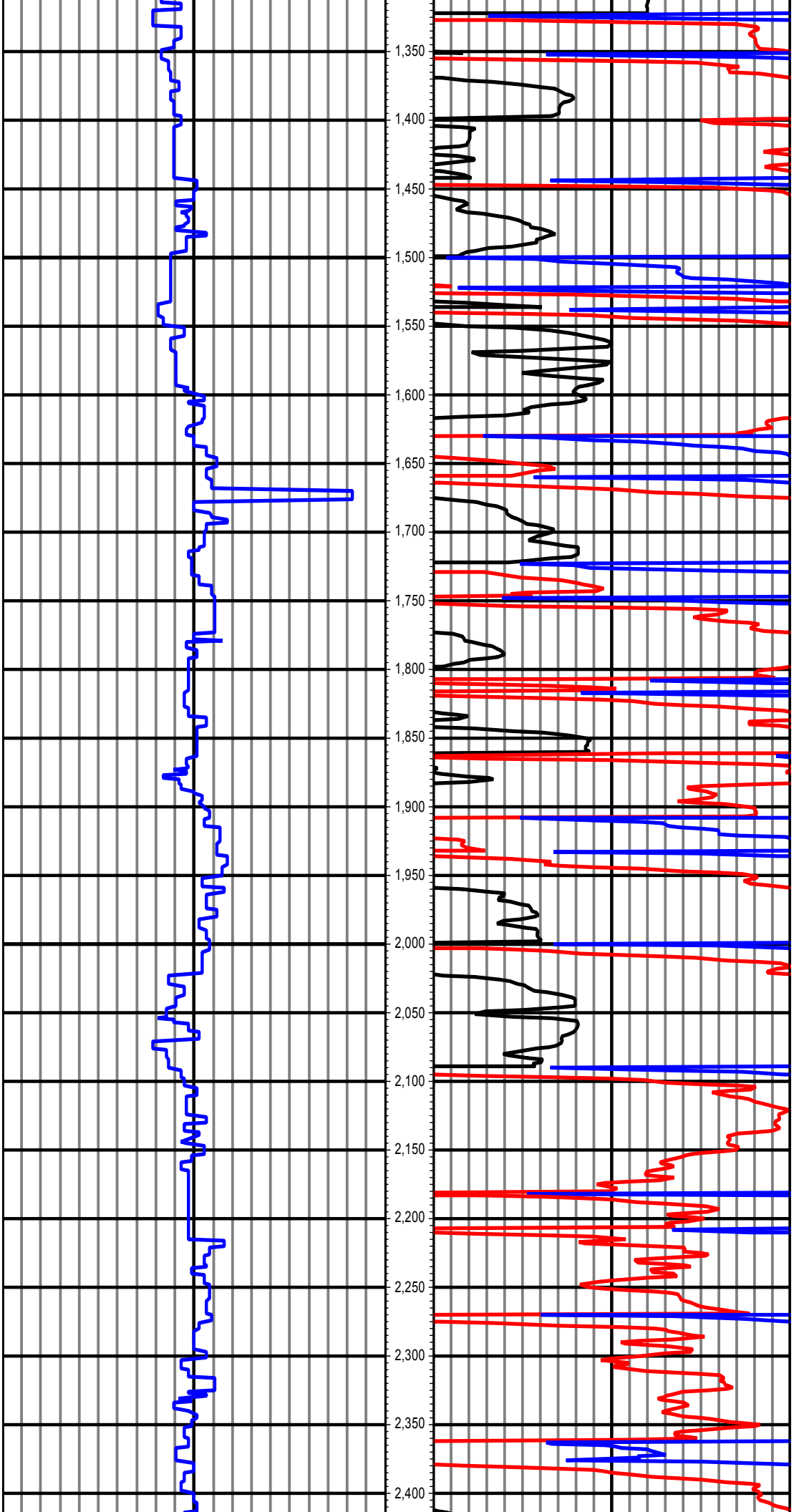
Type	Weight	Density	Viscosity	Rm	Rmf	Rmc	From	To
LSND	10.2		38				1226	10851

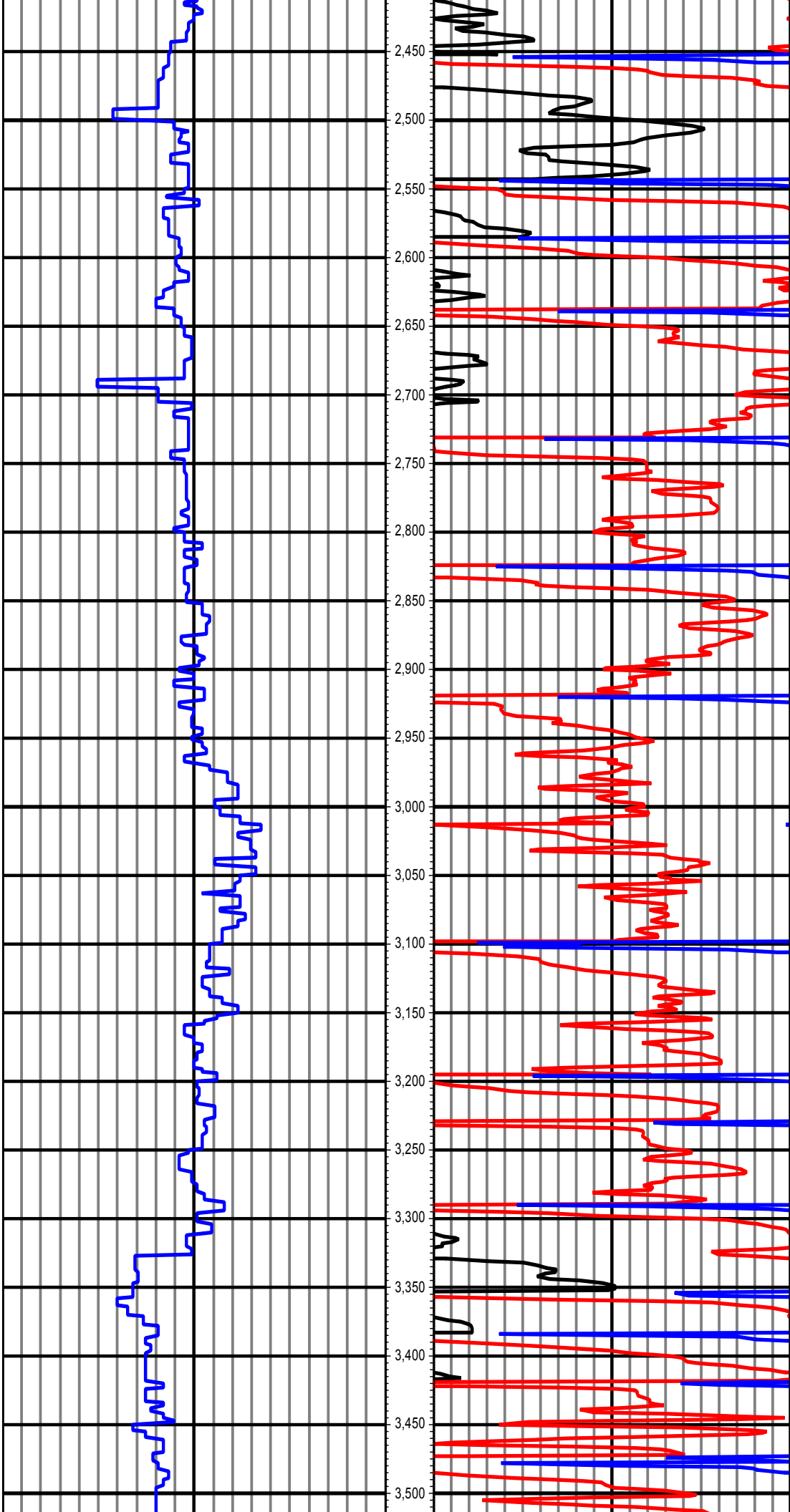
**Tool Run Data**

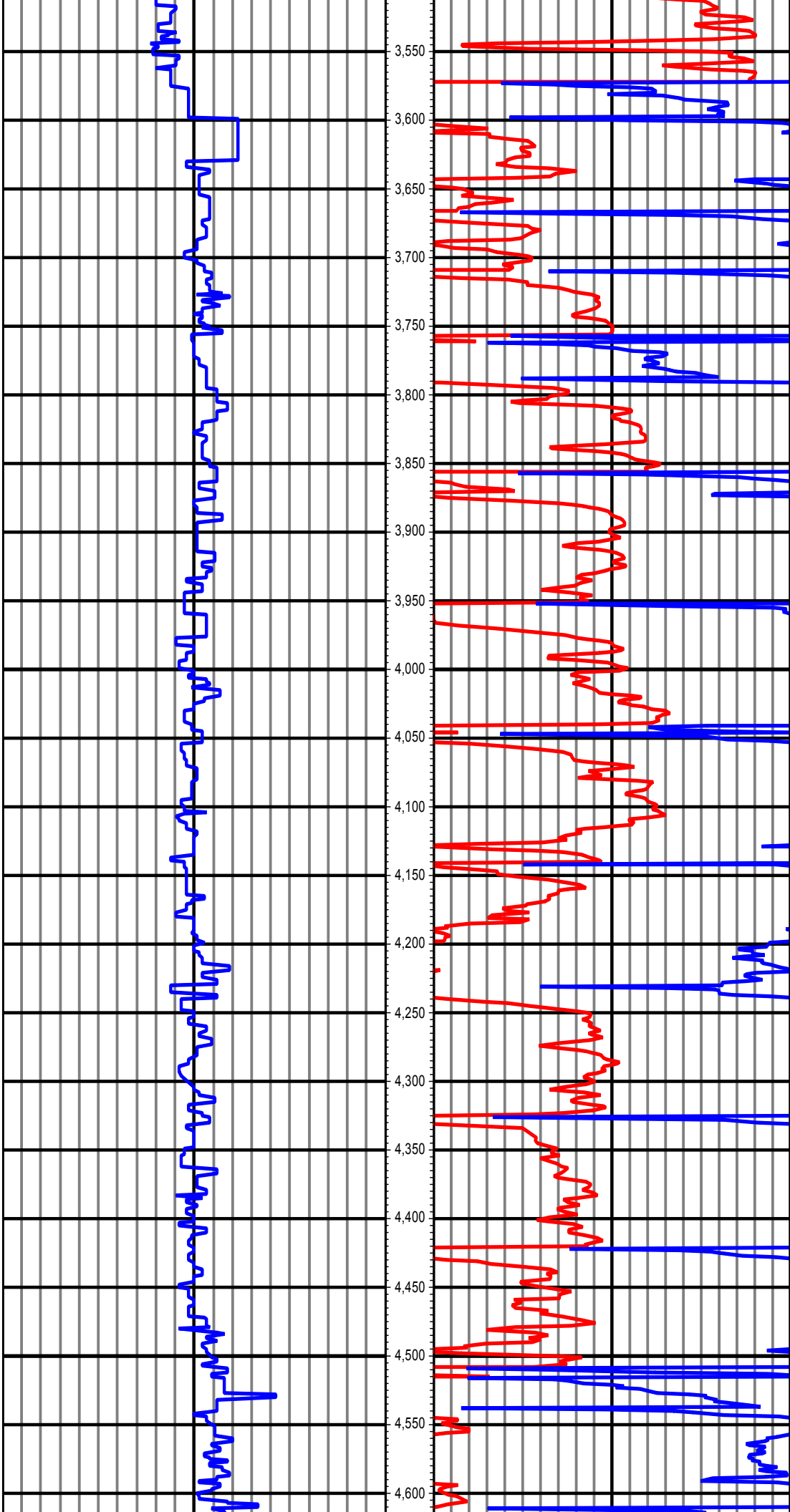
Serial Number	Gamma Offset	Resist. Offset	Start Time	Start Depth	End Time	End Depth
515	37	0	1/16/2015 4:00:21 AM	1226	1/17/2015 3:30:21 AM	5490
205	36	0	1/17/2015 2:00:30 PM	5490	1/17/2015 8:30:30 PM	5935
205	35	0	1/18/2015 11:30:42 PM	5935	1/20/2015 6:00:42 PM	10851

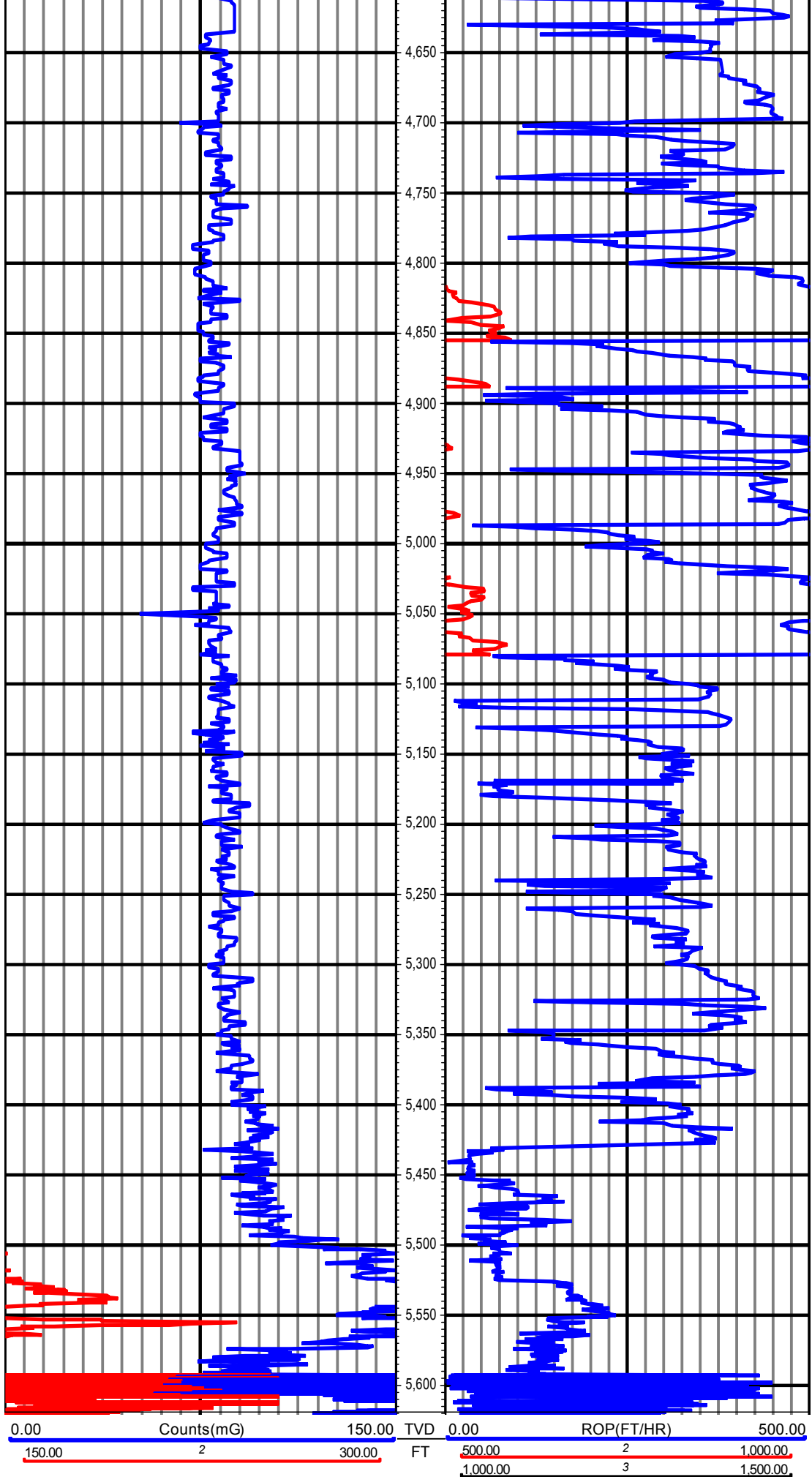
All interpretations are opinions based on inferences from electrical or other measurements and we cannot and do not guarantee the accuracy or correctness of any interpretation, and we shall not except in the case of gross or willful negligence on our part, be liable or responsible for any loss, cost damages or expenses incurred or sustained by anyone resulting from an interpretation made by any of our officers, agents, or employees.













DDC

3222 N. 6th Mile Rd  
Casper, WY 82604**RM-150045**

5":100' - TVD

1/20/2015 5:55:44 PM

**Oper. Company:** Noble Energy, Inc**Country:** United States**State / Province:** Colorado**County / Parish:** Weld**Started:** 01/16/2015 04:00 AM**API/UWI:** 05-123-39836**Field:** Wildcat**Well:** Gonsoulin State LD11-76HN**Rig:** H&P #326**Ended:** 01/20/2015 06:00 PM**Personnel****Day Hand:** Chris Abbott**Night Hand:** Boyd Wolff**Comp. Emp:** DDC**Location****Latitude:** 40° 46' 28.416 N**Longitude:** 103° 50' 6.756 W**Elev. GL:** 4739**Elev. DF:** 30**Elev. KB:** 4769**Hole Data**

Size	From	To
13 3/4	0	1226
8 3/4	1226	5935
6 1/8	5935	10851

**Casing Data**

Size	From	To
9 5/8	0	1218
7	0	5925

**Bit Sizes**

Size	From	To
13 3/4	0	1226
8 3/4	1226	5935
6 1/8	5935	10851

**Mud Data**

Type	Weight	Density	Viscosity	Rm	Rmf	Rmc	From	To
LSND	10.2		38				1226	10851

**Tool Run Data**

Serial Number	Gamma Offset	Resist. Offset	Start Time	Start Depth	End Time	End Depth
515	37	0	1/16/2015 4:00:21 AM	1226	1/17/2015 3:30:21 AM	5490
205	36	0	1/17/2015 2:00:30 PM	5490	1/17/2015 8:30:30 PM	5935
205	35	0	1/18/2015 11:30:42 PM	5935	1/20/2015 6:00:42 PM	10851

All interpretations are opinions based on inferences from electrical or other measurements and we cannot and do not guarantee the accuracy or correctness of any interpretation, and we shall not except in the case of gross or willful negligence on our part, be liable or responsible for any loss, cost damages or expenses incurred or sustained by anyone resulting from an interpretation made by any of our officers, agents, or employees.

