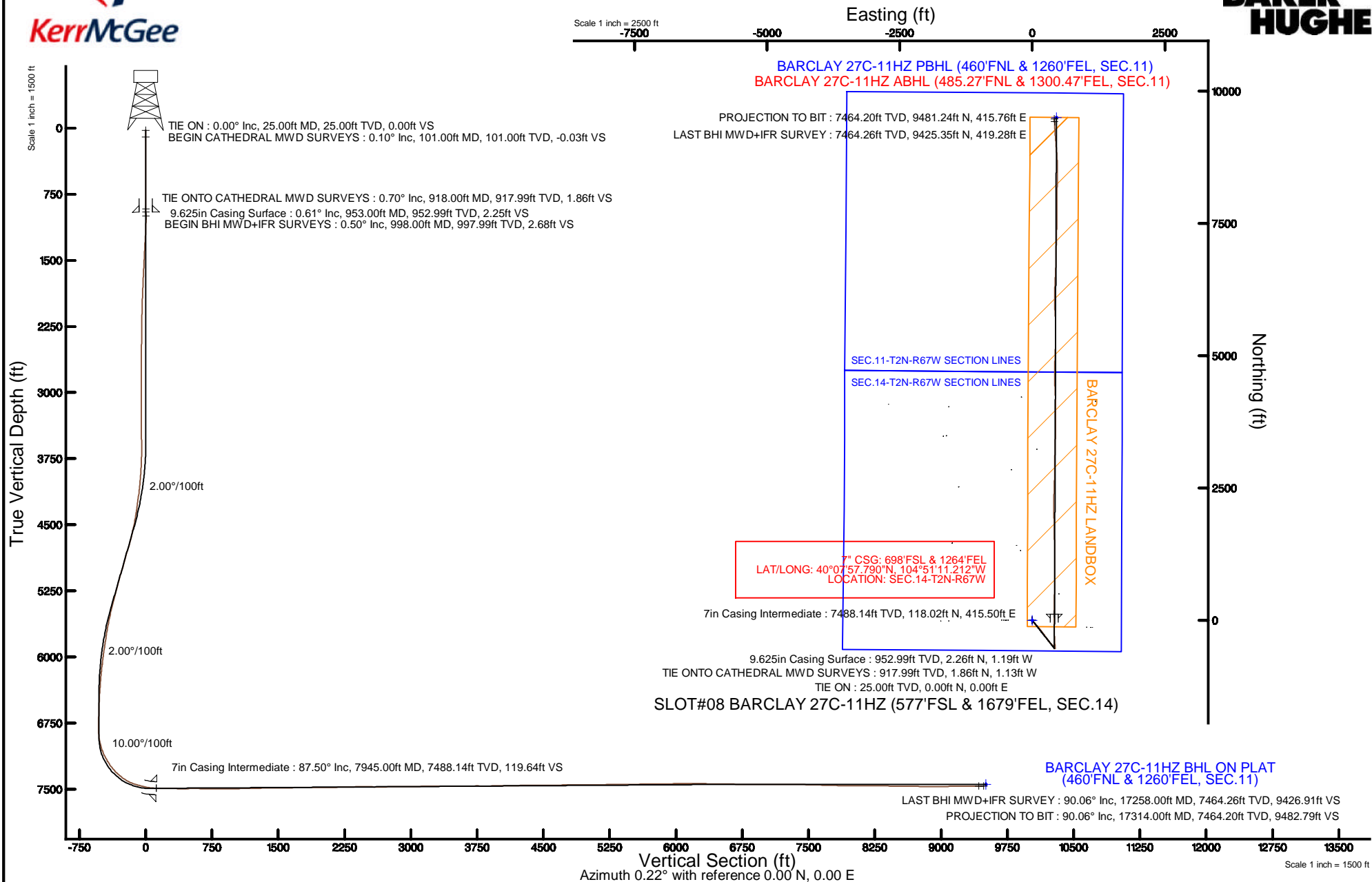


KERR-MCGEE OIL & GAS ONSHORE LP (LAMBERT STATE PLANE COORD)

Location: COLORADO Slot: SLOT#08 BARCLAY 27C-11HZ (577'FSL & 1679'FEL, SEC.14)
 Field: WELD COUNTY (KERR MCGEE) Well: BARCLAY 27C-11HZ
 Facility: SEC.14-T2N-R67W Wellbore: BARCLAY 27C-11HZ PWB

Plot reference wellpath is BARCLAY 27C-11HZ (REV-C.0) PWP

True vertical depths are referenced to PRECISION 595 (25KB) (RKB)	Grid System: NAD83 / Lambert Colorado SP, Northern Zone (501), US feet
Measured depths are referenced to PRECISION 595 (25KB) (RKB)	North Reference: True north
PRECISION 595 (25KB) (RKB) to Mean Sea Level: 4950 feet	Scale: True distance
Mean Sea Level to Mud line (At Slot: SLOT#08 BARCLAY 27C-11HZ (577'FSL & 1679'FEL, SEC.14)): 0 feet	Depths are in feet
Coordinates are in feet referenced to Slot	Created by: robiale01 on 2/24/2015



Actual Wellpath Report

BARCLAY 27C-11HZ AWP
Page 1 of 7

REFERENCE WELLPATH IDENTIFICATION

Operator	KERR-MCGEE OIL & GAS ONSHORE LP (LAMBERT STATE PLANE COORD)	Slot	SLOT#08 BARCLAY 27C-11HZ (577'FSL & 1679'FEL, SEC.14)
Area	COLORADO	Well	BARCLAY 27C-11HZ
Field	WELD COUNTY (KERR MCGEE)	Wellbore	BARCLAY 27C-11HZ AWB <101-17314>
Facility	SEC.14-T2N-R67W		

REPORT SETUP INFORMATION

Projection System	NAD83 / Lambert Colorado SP, Northern Zone (501), US feet	Software System	WellArchitect® 4.1.1
North Reference	True	User	Robiale01
Scale	0.999959	Report Generated	2/23/2015 at 1:24:37 PM
Convergence at slot	0.42° East	Database/Source file	WellArchitectDB/BARCLAY_27C-11HZ_AWB_101-17314_.xml

WELLPATH LOCATION

	Local coordinates		Grid coordinates		Geographic coordinates	
	North[ft]	East[ft]	Easting[US ft]	Northing[US ft]	Latitude	Longitude
Slot Location	-3.84	544.02	3180458.44	1291732.14	40°07'56.624"N	104°51'16.561"W
Facility Reference Pt			3179914.43	1291732.03	40°07'56.662"N	104°51'23.565"W
Field Reference Pt			3197771.84	1268891.29	40°04'09.600"N	104°47'36.000"W

WELLPATH DATUM

Calculation method	Minimum curvature	PRECISION 595 (25'KB) (RKB) to Facility Vertical Datum	4950.00ft
Horizontal Reference Pt	Slot	PRECISION 595 (25'KB) (RKB) to Mean Sea Level	4950.00ft
Vertical Reference Pt	PRECISION 595 (25'KB) (RKB)	PRECISION 595 (25'KB) (RKB) to Mud Line at Slot (SLOT#08 BARCLAY 27C-11HZ (577'FSL & 1679'FEL, SEC.14))	4950.00ft
MD Reference Pt	PRECISION 595 (25'KB) (RKB)	Section Origin	N 0.00, E 0.00 ft
Field Vertical Reference	Mean Sea Level	Section Azimuth	2.51°

REFERENCE WELLPATH IDENTIFICATION

Operator	KERR-MCGEE OIL & GAS ONSHORE LP (LAMBERT STATE PLANE COORD)	Slot	SLOT#08 BARCLAY 27C-11HZ (577'FSL & 1679'FEL, SEC.14)
Area	COLORADO	Well	BARCLAY 27C-11HZ
Field	WELD COUNTY (KERR MCGEE)	Wellbore	BARCLAY 27C-11HZ AWP <101-17314>
Facility	SEC.14-T2N-R67W		

WELLPATH DATA (182 stations) † = interpolated/extrapolated station

MD [ft]	Inclination [°]	Azimuth [°]	TVD [ft]	Vert Sect [ft]	North [ft]	East [ft]	Latitude	Longitude	DLS [°/100ft]	Comments
0.00†	0.000	241.400	0.00	0.00	0.00	0.00	40°07'56.624°N	104°51'16.561°W	0.00	
25.00	0.000	241.400	25.00	0.00	0.00	0.00	40°07'56.624°N	104°51'16.561°W	0.00	TIE ON
101.00	0.100	241.400	101.00	-0.03	-0.03	-0.06	40°07'56.624°N	104°51'16.562°W	0.13	BEGIN CATHEDRAL MWD SURVEYS
181.00	0.300	264.300	181.00	-0.10	-0.09	-0.33	40°07'56.623°N	104°51'16.565°W	0.26	
259.00	0.400	239.600	259.00	-0.28	-0.24	-0.77	40°07'56.622°N	104°51'16.571°W	0.23	
340.00	0.100	98.400	340.00	-0.44	-0.40	-0.94	40°07'56.620°N	104°51'16.573°W	0.60	
420.00	0.100	70.500	420.00	-0.42	-0.38	-0.81	40°07'56.620°N	104°51'16.571°W	0.06	
500.00	0.200	320.200	500.00	-0.29	-0.25	-0.83	40°07'56.621°N	104°51'16.572°W	0.32	
580.00	0.100	318.600	580.00	-0.14	-0.09	-0.96	40°07'56.623°N	104°51'16.573°W	0.13	
660.00	0.300	13.100	660.00	0.12	0.16	-0.96	40°07'56.626°N	104°51'16.573°W	0.32	
740.00	0.400	351.000	739.99	0.60	0.64	-0.96	40°07'56.630°N	104°51'16.573°W	0.21	
820.00	0.300	357.400	819.99	1.08	1.13	-1.01	40°07'56.635°N	104°51'16.574°W	0.13	
900.00	0.500	347.400	899.99	1.63	1.68	-1.10	40°07'56.641°N	104°51'16.575°W	0.26	
918.00	0.700	352.900	917.99	1.81	1.86	-1.13	40°07'56.642°N	104°51'16.576°W	1.16	TIE ONTO CATHEDRAL MWD SURVEYS
998.00	0.500	344.600	997.99	2.63	2.68	-1.28	40°07'56.651°N	104°51'16.578°W	0.27	BEGIN BHI MWD+IFR SURVEYS
1092.00	1.490	143.580	1091.98	2.06	2.10	-0.66	40°07'56.645°N	104°51'16.570°W	2.09	
1187.00	3.590	149.680	1186.88	-1.40	-1.47	1.57	40°07'56.610°N	104°51'16.541°W	2.23	
1376.00	3.550	150.570	1375.51	-11.33	-11.67	7.43	40°07'56.509°N	104°51'16.465°W	0.04	
1568.00	3.080	152.010	1567.19	-20.82	-21.40	12.77	40°07'56.413°N	104°51'16.397°W	0.25	
1756.00	3.070	148.600	1754.92	-29.35	-30.16	17.77	40°07'56.326°N	104°51'16.332°W	0.10	
1945.00	2.500	140.180	1943.70	-36.60	-37.64	23.04	40°07'56.252°N	104°51'16.264°W	0.37	
2125.00	1.850	138.230	2123.57	-41.58	-42.83	27.49	40°07'56.201°N	104°51'16.207°W	0.36	
2304.00	1.350	118.260	2302.50	-44.57	-45.98	31.28	40°07'56.170°N	104°51'16.158°W	0.41	
2484.00	0.920	129.060	2482.46	-46.35	-47.89	34.27	40°07'56.151°N	104°51'16.120°W	0.27	
2843.00	0.490	75.060	2841.44	-47.60	-49.32	37.99	40°07'56.137°N	104°51'16.072°W	0.21	
3202.00	0.250	124.260	3200.43	-47.56	-49.36	40.12	40°07'56.136°N	104°51'16.045°W	0.11	
3561.00	0.820	344.720	3559.42	-45.52	-47.32	40.09	40°07'56.156°N	104°51'16.045°W	0.29	
3651.00	0.620	107.990	3649.42	-45.04	-46.85	40.38	40°07'56.161°N	104°51'16.041°W	1.41	
3741.00	2.310	122.840	3739.38	-46.08	-47.99	42.37	40°07'56.150°N	104°51'16.016°W	1.91	
3830.00	3.830	139.210	3828.25	-49.15	-51.21	45.82	40°07'56.118°N	104°51'15.971°W	1.95	
3920.00	4.630	143.740	3918.01	-54.17	-56.41	49.93	40°07'56.067°N	104°51'15.918°W	0.96	
4009.00	6.330	143.190	4006.60	-60.77	-63.24	54.99	40°07'55.999°N	104°51'15.853°W	1.91	
4099.00	7.930	143.480	4095.90	-69.43	-72.20	61.66	40°07'55.910°N	104°51'15.767°W	1.78	
4189.00	9.950	143.120	4184.80	-80.26	-83.41	70.02	40°07'55.800°N	104°51'15.659°W	2.25	
4279.00	10.780	134.520	4273.34	-91.91	-95.53	80.69	40°07'55.680°N	104°51'15.522°W	1.95	
4369.00	11.830	137.590	4361.59	-104.07	-108.25	92.92	40°07'55.554°N	104°51'15.365°W	1.34	
4458.00	13.870	137.870	4448.36	-118.12	-122.90	106.23	40°07'55.410°N	104°51'15.193°W	2.29	
4547.00	15.780	139.280	4534.39	-134.53	-139.98	121.28	40°07'55.241°N	104°51'15.000°W	2.18	
4637.00	17.530	139.400	4620.61	-153.35	-159.55	138.08	40°07'55.047°N	104°51'14.783°W	1.94	
4727.00	20.050	143.090	4705.81	-175.16	-182.18	156.17	40°07'54.824°N	104°51'14.550°W	3.09	
4817.00	19.160	142.830	4790.59	-198.45	-206.29	174.36	40°07'54.585°N	104°51'14.316°W	0.99	
4906.00	20.130	144.020	4874.41	-221.68	-230.32	192.18	40°07'54.348°N	104°51'14.087°W	1.18	
4996.00	18.970	144.200	4959.22	-245.28	-254.71	209.84	40°07'54.107°N	104°51'13.859°W	1.29	
5086.00	20.400	143.750	5043.96	-268.99	-279.23	227.67	40°07'53.865°N	104°51'13.630°W	1.60	
5266.00	17.930	143.850	5213.97	-315.09	-326.91	262.57	40°07'53.393°N	104°51'13.181°W	1.37	

Actual Wellpath Report

BARCLAY 27C-11HZ AWP
Page 3 of 7

REFERENCE WELLPATH IDENTIFICATION

Operator	KERR-MCGEE OIL & GAS ONSHORE LP (LAMBERT STATE PLANE COORD)	Slot	SLOT#08 BARCLAY 27C-11HZ (577'FSL & 1679'FEL, SEC.14)
Area	COLORADO	Well	BARCLAY 27C-11HZ
Field	WELD COUNTY (KERR MCGEE)	Wellbore	BARCLAY 27C-11HZ AWP <101-17314>
Facility	SEC.14-T2N-R67W		

WELLPATH DATA (182 stations) † = interpolated/extrapolated station

MD [ft]	Inclination [°]	Azimuth [°]	TVD [ft]	Vert Sect [ft]	North [ft]	East [ft]	Latitude	Longitude	DLS [°/100ft]	Comments
5445.00	17.250	143.420	5384.60	-357.21	-370.47	294.64	40°07'52.963"N	104°51'12.768"W	0.39	
5534.00	17.370	141.060	5469.57	-377.41	-391.40	310.86	40°07'52.756"N	104°51'12.559"W	0.80	
5624.00	15.260	141.080	5555.94	-396.36	-411.07	326.74	40°07'52.562"N	104°51'12.354"W	2.34	
5714.00	14.740	136.490	5642.88	-413.19	-428.59	342.07	40°07'52.389"N	104°51'12.157"W	1.44	
5804.00	12.590	134.830	5730.33	-427.75	-443.81	356.91	40°07'52.238"N	104°51'11.966"W	2.43	
5893.00	12.080	136.480	5817.27	-440.74	-457.40	370.20	40°07'52.104"N	104°51'11.795"W	0.70	
5983.00	11.570	134.080	5905.36	-453.27	-470.51	383.17	40°07'51.974"N	104°51'11.628"W	0.79	
6073.00	9.300	138.930	5993.87	-464.53	-482.27	394.43	40°07'51.858"N	104°51'11.483"W	2.70	
6162.00	8.970	146.020	6081.74	-475.32	-493.45	403.04	40°07'51.748"N	104°51'11.372"W	1.32	
6252.00	7.260	143.930	6170.84	-485.40	-503.86	410.31	40°07'51.645"N	104°51'11.279"W	1.93	
6342.00	6.130	138.520	6260.22	-493.31	-512.06	416.84	40°07'51.564"N	104°51'11.195"W	1.44	
6432.00	4.960	145.180	6349.80	-499.86	-518.85	422.24	40°07'51.497"N	104°51'11.125"W	1.48	
6522.00	4.160	141.220	6439.52	-505.40	-524.59	426.51	40°07'51.440"N	104°51'11.070"W	0.95	
6611.00	3.220	136.760	6528.33	-509.57	-528.93	430.24	40°07'51.397"N	104°51'11.022"W	1.10	
6701.00	1.550	172.040	6618.26	-512.53	-531.98	432.14	40°07'51.367"N	104°51'10.997"W	2.39	
6791.00	1.280	157.160	6708.23	-514.64	-534.11	432.70	40°07'51.346"N	104°51'10.990"W	0.50	
6881.00	0.320	308.350	6798.22	-515.40	-534.88	432.89	40°07'51.338"N	104°51'10.988"W	1.74	
6925.00	0.690	322.360	6842.22	-515.13	-534.59	432.64	40°07'51.341"N	104°51'10.991"W	0.88	
6970.00	3.880	346.640	6887.18	-513.45	-532.90	432.12	40°07'51.358"N	104°51'10.998"W	7.25	
7015.00	9.090	353.940	6931.88	-508.47	-527.88	431.39	40°07'51.407"N	104°51'11.007"W	11.70	
7060.00	13.660	356.450	6975.98	-499.67	-519.03	430.69	40°07'51.495"N	104°51'11.016"W	10.21	
7105.00	17.410	357.400	7019.33	-487.67	-507.00	430.05	40°07'51.614"N	104°51'11.024"W	8.35	
7150.00	20.860	358.530	7061.84	-472.97	-492.26	429.54	40°07'51.759"N	104°51'11.031"W	7.71	
7195.00	24.530	355.680	7103.35	-455.70	-474.93	428.63	40°07'51.931"N	104°51'11.043"W	8.51	
7239.00	27.150	355.070	7142.94	-436.67	-455.82	427.08	40°07'52.120"N	104°51'11.063"W	5.99	
7284.00	30.900	357.600	7182.29	-414.97	-434.04	425.71	40°07'52.335"N	104°51'11.080"W	8.77	
7329.00	34.590	357.760	7220.13	-390.72	-409.72	424.73	40°07'52.575"N	104°51'11.093"W	8.20	
7374.00	38.620	357.230	7256.25	-363.99	-382.92	423.55	40°07'52.840"N	104°51'11.108"W	8.98	
7419.00	43.150	356.500	7290.26	-334.69	-353.52	421.93	40°07'53.130"N	104°51'11.129"W	10.12	
7464.00	47.100	356.310	7322.00	-302.99	-321.70	419.93	40°07'53.445"N	104°51'11.155"W	8.78	
7509.00	50.350	357.750	7351.69	-269.33	-287.93	418.19	40°07'53.779"N	104°51'11.177"W	7.61	
7553.00	54.800	357.940	7378.42	-234.51	-253.02	416.88	40°07'54.124"N	104°51'11.194"W	10.12	
7598.00	60.520	356.890	7402.48	-196.66	-215.05	415.15	40°07'54.499"N	104°51'11.216"W	12.86	
7643.00	65.980	357.700	7422.73	-156.66	-174.93	413.26	40°07'54.895"N	104°51'11.240"W	12.24	
7688.00	70.200	359.360	7439.52	-115.02	-133.21	412.20	40°07'55.308"N	104°51'11.254"W	9.98	
7733.00	73.600	0.030	7453.50	-72.30	-90.44	411.98	40°07'55.730"N	104°51'11.257"W	7.69	
7778.00	76.100	1.220	7465.26	-28.90	-47.01	412.45	40°07'56.159"N	104°51'11.251"W	6.11	
7823.00	78.620	1.440	7475.10	15.00	-3.12	413.47	40°07'56.593"N	104°51'11.238"W	5.62	
7868.00	82.780	1.230	7482.37	59.39	41.27	414.51	40°07'57.032"N	104°51'11.224"W	9.26	
7912.00	86.600	0.620	7486.44	103.18	85.07	415.21	40°07'57.465"N	104°51'11.215"W	8.79	
7945.00†	87.499	0.389	7488.14	136.11	118.02	415.50	40°07'57.790"N	104°51'11.212"W	2.81	7" CASING POINT
7995.00	88.860	0.040	7489.73	186.05	168.00	415.69	40°07'58.284"N	104°51'11.209"W	2.81	
8085.00	89.260	0.280	7491.21	275.96	257.98	415.94	40°07'59.173"N	104°51'11.206"W	0.52	
8175.00	89.570	0.400	7492.13	365.89	347.98	416.48	40°08'00.063"N	104°51'11.199"W	0.37	
8265.00	90.180	1.160	7492.32	455.85	437.97	417.70	40°08'00.952"N	104°51'11.183"W	1.08	

REFERENCE WELLPATH IDENTIFICATION

Operator	KERR-MCGEE OIL & GAS ONSHORE LP (LAMBERT STATE PLANE COORD)	Slot	SLOT#08 BARCLAY 27C-11HZ (577'FSL & 1679'FEL, SEC.14)
Area	COLORADO	Well	BARCLAY 27C-11HZ
Field	WELD COUNTY (KERR MCGEE)	Wellbore	BARCLAY 27C-11HZ AWP <101-17314>
Facility	SEC.14-T2N-R67W		

WELLPATH DATA (182 stations)

MD [ft]	Inclination [°]	Azimuth [°]	TVD [ft]	Vert Sect [ft]	North [ft]	East [ft]	Latitude	Longitude	DLS [°/100ft]	Comments
8354.00	90.430	1.820	7491.85	544.83	526.93	420.02	40°08'01.831"N	104°51'11.153"W	0.79	
8444.00	89.040	0.920	7492.27	634.81	616.91	422.17	40°08'02.720"N	104°51'11.126"W	1.84	
8534.00	89.440	0.710	7493.46	724.76	706.89	423.45	40°08'03.609"N	104°51'11.109"W	0.50	
8623.00	89.190	0.640	7494.52	813.71	795.88	424.50	40°08'04.489"N	104°51'11.096"W	0.29	
8739.00	90.490	0.430	7494.85	929.64	911.87	425.58	40°08'05.635"N	104°51'11.082"W	1.14	
8804.00	90.980	359.940	7494.01	994.58	976.86	425.79	40°08'06.277"N	104°51'11.079"W	1.07	
8893.00	91.470	0.420	7492.11	1083.48	1065.84	426.07	40°08'07.157"N	104°51'11.075"W	0.77	
9073.00	91.110	359.120	7488.06	1263.23	1245.79	425.35	40°08'08.935"N	104°51'11.085"W	0.75	
9163.00	90.180	358.120	7487.04	1353.01	1335.75	423.18	40°08'09.824"N	104°51'11.112"W	1.52	
9253.00	90.830	358.960	7486.25	1442.79	1425.72	420.89	40°08'10.713"N	104°51'11.142"W	1.18	
9342.00	91.390	358.770	7484.53	1531.59	1514.69	419.12	40°08'11.592"N	104°51'11.165"W	0.66	
9432.00	90.680	359.040	7482.90	1621.40	1604.65	417.40	40°08'12.481"N	104°51'11.187"W	0.84	
9522.00	90.890	358.700	7481.67	1711.21	1694.63	415.63	40°08'13.370"N	104°51'11.210"W	0.44	
9612.00	90.090	359.070	7480.90	1801.03	1784.61	413.88	40°08'14.260"N	104°51'11.232"W	0.98	
9701.00	89.720	358.590	7481.05	1889.84	1873.59	412.06	40°08'15.139"N	104°51'11.256"W	0.68	
9791.00	90.120	358.630	7481.17	1979.63	1963.56	409.88	40°08'16.028"N	104°51'11.284"W	0.45	
9881.00	91.410	358.980	7479.97	2069.43	2053.53	408.00	40°08'16.917"N	104°51'11.308"W	1.49	
9971.00	91.320	359.690	7477.83	2159.27	2143.50	406.96	40°08'17.806"N	104°51'11.321"W	0.79	
10150.00	91.720	1.520	7473.08	2338.10	2322.42	408.84	40°08'19.574"N	104°51'11.297"W	1.05	
10240.00	90.580	2.270	7471.27	2428.07	2412.35	411.82	40°08'20.463"N	104°51'11.258"W	1.52	
10330.00	89.320	1.960	7471.35	2518.07	2502.29	415.14	40°08'21.352"N	104°51'11.216"W	1.44	
10419.00	89.170	1.450	7472.52	2607.05	2591.24	417.79	40°08'22.231"N	104°51'11.182"W	0.60	
10509.00	90.680	0.780	7472.64	2697.02	2681.22	419.54	40°08'23.120"N	104°51'11.159"W	1.84	
10599.00	90.890	1.020	7471.41	2786.98	2771.20	420.95	40°08'24.009"N	104°51'11.141"W	0.35	
10689.00	90.710	1.110	7470.15	2876.94	2861.17	422.63	40°08'24.898"N	104°51'11.119"W	0.22	
10778.00	90.150	1.060	7469.48	2965.91	2950.16	424.31	40°08'25.778"N	104°51'11.098"W	0.63	
10868.00	91.230	0.870	7468.40	3055.87	3040.13	425.83	40°08'26.667"N	104°51'11.078"W	1.22	
10958.00	90.830	1.150	7466.78	3145.83	3130.11	427.41	40°08'27.556"N	104°51'11.058"W	0.54	
11048.00	90.990	1.900	7465.35	3235.80	3220.06	429.81	40°08'28.445"N	104°51'11.027"W	0.85	
11137.00	90.620	1.370	7464.10	3324.78	3309.02	432.35	40°08'29.324"N	104°51'10.994"W	0.73	
11317.00	90.120	1.930	7462.94	3504.75	3488.94	437.53	40°08'31.102"N	104°51'10.927"W	0.42	
11407.00	89.720	0.760	7463.07	3594.73	3578.91	439.64	40°08'31.991"N	104°51'10.900"W	1.37	
11497.00	90.830	1.610	7462.63	3684.71	3668.89	441.50	40°08'32.880"N	104°51'10.876"W	1.55	
11586.00	89.850	0.680	7462.11	3773.68	3757.87	443.28	40°08'33.760"N	104°51'10.853"W	1.52	
11676.00	89.850	359.320	7462.34	3863.59	3847.86	443.28	40°08'34.649"N	104°51'10.853"W	1.51	
11766.00	91.110	358.870	7461.59	3953.42	3937.85	441.86	40°08'35.538"N	104°51'10.871"W	1.49	
11856.00	90.920	359.030	7459.99	4043.24	4027.82	440.21	40°08'36.427"N	104°51'10.893"W	0.28	
11946.00	90.770	358.850	7458.67	4133.05	4117.79	438.55	40°08'37.316"N	104°51'10.914"W	0.26	
12036.00	90.770	358.450	7457.46	4222.84	4207.76	436.43	40°08'38.205"N	104°51'10.941"W	0.44	
12125.00	90.490	357.890	7456.48	4311.58	4296.71	433.59	40°08'39.084"N	104°51'10.978"W	0.70	
12215.00	90.610	356.340	7455.61	4401.17	4386.59	429.06	40°08'39.973"N	104°51'11.036"W	1.73	
12394.00	90.460	359.130	7453.94	4579.53	4565.42	421.98	40°08'41.740"N	104°51'11.127"W	1.56	
12574.00	91.320	1.310	7451.15	4759.35	4745.39	422.67	40°08'43.518"N	104°51'11.118"W	1.30	
12664.00	90.030	1.450	7450.09	4849.32	4835.35	424.84	40°08'44.407"N	104°51'11.090"W	1.44	
12754.00	90.950	2.310	7449.32	4939.31	4925.30	427.79	40°08'45.296"N	104°51'11.052"W	1.40	

REFERENCE WELLPATH IDENTIFICATION

Operator	KERR-MCGEE OIL & GAS ONSHORE LP (LAMBERT STATE PLANE COORD)	Slot	SLOT#08 BARCLAY 27C-11HZ (577'FSL & 1679'FEL, SEC.14)
Area	COLORADO	Well	BARCLAY 27C-11HZ
Field	WELD COUNTY (KERR MCGEE)	Wellbore	BARCLAY 27C-11HZ AWP <101-17314>
Facility	SEC.14-T2N-R67W		

WELLPATH DATA (182 stations)

MD [ft]	Inclination [°]	Azimuth [°]	TVD [ft]	Vert Sect [ft]	North [ft]	East [ft]	Latitude	Longitude	DLS [°/100ft]	Comments
12843.00	89.750	2.100	7448.77	5028.31	5014.23	431.22	40°08'46.175"N	104°51'11.008"W	1.37	
12933.00	90.740	2.270	7448.39	5118.30	5104.16	434.65	40°08'47.064"N	104°51'10.964"W	1.12	
13113.00	90.580	1.030	7446.31	5298.27	5284.07	439.83	40°08'48.842"N	104°51'10.897"W	0.69	
13203.00	90.640	1.220	7445.36	5388.24	5374.05	441.60	40°08'49.731"N	104°51'10.874"W	0.22	
13292.00	90.520	0.110	7444.45	5477.18	5463.04	442.63	40°08'50.610"N	104°51'10.861"W	1.25	
13382.00	91.390	359.840	7442.95	5567.08	5553.02	442.59	40°08'51.499"N	104°51'10.862"W	1.01	
13472.00	90.370	358.300	7441.57	5656.91	5643.00	441.13	40°08'52.389"N	104°51'10.880"W	2.05	
13562.00	89.380	355.350	7441.77	5746.45	5732.85	436.15	40°08'53.276"N	104°51'10.945"W	3.46	
13652.00	91.140	356.300	7441.36	5835.83	5822.60	429.59	40°08'54.163"N	104°51'11.029"W	2.22	
13742.00	92.160	358.440	7438.77	5925.43	5912.47	425.47	40°08'55.051"N	104°51'11.082"W	2.63	
13831.00	91.320	359.780	7436.07	6014.23	6001.41	424.08	40°08'55.930"N	104°51'11.100"W	1.78	
13921.00	89.600	0.800	7435.34	6104.15	6091.40	424.54	40°08'56.820"N	104°51'11.094"W	2.22	
14011.00	89.780	359.910	7435.83	6194.09	6181.40	425.10	40°08'57.709"N	104°51'11.087"W	1.01	
14101.00	89.690	1.600	7436.25	6284.04	6271.39	426.28	40°08'58.598"N	104°51'11.071"W	1.88	
14190.00	89.010	2.840	7437.26	6373.03	6360.31	429.73	40°08'59.477"N	104°51'11.027"W	1.59	
14280.00	89.160	2.770	7438.69	6463.02	6450.19	434.13	40°09'00.365"N	104°51'10.970"W	0.18	
14370.00	89.810	2.690	7439.50	6553.01	6540.09	438.42	40°09'01.254"N	104°51'10.915"W	0.73	
14460.00	88.270	2.200	7441.01	6643.00	6629.99	442.26	40°09'02.142"N	104°51'10.866"W	1.80	
14550.00	89.470	2.130	7442.78	6732.98	6719.90	445.66	40°09'03.031"N	104°51'10.822"W	1.34	
14639.00	89.130	0.640	7443.87	6821.95	6808.87	447.81	40°09'03.910"N	104°51'10.794"W	1.72	
14729.00	90.030	0.840	7444.53	6911.90	6898.86	448.97	40°09'04.799"N	104°51'10.779"W	1.02	
14819.00	90.210	0.960	7444.34	7001.87	6988.85	450.39	40°09'05.688"N	104°51'10.761"W	0.24	
14909.00	89.720	1.010	7444.40	7091.84	7078.83	451.93	40°09'06.578"N	104°51'10.741"W	0.55	
14998.00	89.500	1.540	7445.00	7180.81	7167.81	453.91	40°09'07.457"N	104°51'10.715"W	0.64	
15088.00	90.670	2.090	7444.87	7270.80	7257.76	456.76	40°09'08.346"N	104°51'10.679"W	1.44	
15268.00	88.330	1.190	7446.44	7450.76	7437.67	461.92	40°09'10.124"N	104°51'10.612"W	1.39	
15357.00	88.710	1.010	7448.74	7539.71	7526.62	463.62	40°09'11.003"N	104°51'10.590"W	0.47	
15447.00	88.190	0.950	7451.17	7629.64	7616.57	465.16	40°09'11.892"N	104°51'10.570"W	0.58	
15537.00	87.940	359.900	7454.21	7719.53	7706.52	465.83	40°09'12.780"N	104°51'10.562"W	1.20	
15627.00	88.890	359.020	7456.70	7809.36	7796.48	464.98	40°09'13.669"N	104°51'10.573"W	1.44	
15716.00	89.290	359.190	7458.12	7898.20	7885.46	463.59	40°09'14.549"N	104°51'10.591"W	0.49	
15806.00	90.120	0.370	7458.58	7988.09	7975.45	463.25	40°09'15.438"N	104°51'10.595"W	1.60	
15896.00	90.090	1.640	7458.42	8078.06	8065.44	464.82	40°09'16.327"N	104°51'10.575"W	1.41	
15986.00	90.120	1.970	7458.25	8168.05	8155.39	467.66	40°09'17.216"N	104°51'10.538"W	0.37	
16076.00	88.830	1.830	7459.07	8258.04	8245.34	470.64	40°09'18.105"N	104°51'10.500"W	1.44	
16165.00	88.980	0.820	7460.78	8347.00	8334.30	472.70	40°09'18.984"N	104°51'10.473"W	1.15	
16255.00	88.950	0.790	7462.40	8436.95	8424.27	473.96	40°09'19.873"N	104°51'10.457"W	0.05	
16435.00	89.440	358.310	7464.93	8616.67	8604.23	472.55	40°09'21.652"N	104°51'10.475"W	1.40	
16615.00	88.580	356.680	7468.04	8795.95	8784.03	464.69	40°09'23.428"N	104°51'10.576"W	1.02	
16704.00	90.030	355.580	7469.12	8884.39	8872.81	458.68	40°09'24.306"N	104°51'10.654"W	2.04	
16794.00	90.280	354.990	7468.88	8973.67	8962.51	451.28	40°09'25.192"N	104°51'10.749"W	0.71	
16884.00	91.260	355.760	7467.67	9062.97	9052.21	444.03	40°09'26.079"N	104°51'10.842"W	1.38	
16974.00	90.890	355.690	7465.98	9152.32	9141.94	437.32	40°09'26.965"N	104°51'10.929"W	0.42	
17064.00	90.490	356.310	7464.89	9241.73	9231.71	431.04	40°09'27.852"N	104°51'11.009"W	0.82	
17153.00	90.120	356.690	7464.42	9330.24	9320.55	425.61	40°09'28.730"N	104°51'11.079"W	0.60	

Actual Wellpath Report

BARCLAY 27C-11HZ AWP
Page 6 of 7

REFERENCE WELLPATH IDENTIFICATION

Operator	KERR-MCGEE OIL & GAS ONSHORE LP (LAMBERT STATE PLANE COORD)	Slot	SLOT#08 BARCLAY 27C-11HZ (577'FSL & 1679'FEL, SEC.14)
Area	COLORADO	Well	BARCLAY 27C-11HZ
Field	WELD COUNTY (KERR MCGEE)	Wellbore	BARCLAY 27C-11HZ AWB <101-17314>
Facility	SEC.14-T2N-R67W		

WELLPATH DATA (182 stations)

MD [ft]	Inclination [°]	Azimuth [°]	TVD [ft]	Vert Sect [ft]	North [ft]	East [ft]	Latitude	Longitude	DLS [°/100ft]	Comments
17258.00	90.060	356.400	7464.26	9434.67	9425.35	419.28	40°09'29.766"N	104°51'11.161"W	0.28	LAST BHI MWD+IFR SURVEY
17314.00	90.060	356.400	7464.20	9490.35	9481.24	415.76	40°09'30.318"N	104°51'11.206"W	0.00	PROJECTION TO BIT

HOLE & CASING SECTIONS - Ref Wellbore: BARCLAY 27C-11HZ AWB <101-17314> Ref Wellpath: BARCLAY 27C-11HZ AWP

String/Diameter	Start MD [ft]	End MD [ft]	Interval [ft]	Start TVD [ft]	End TVD [ft]	Start N/S [ft]	Start E/W [ft]	End N/S [ft]	End E/W [ft]
13.5in Open Hole	25.00	953.00	928.00	25.00	952.99	0.00	0.00	2.26	-1.19
9.625in Casing Surface	25.00	953.00	928.00	25.00	952.99	0.00	0.00	2.26	-1.19
8.75in Open Hole	953.00	7955.00	7002.00	952.99	7488.56	2.26	-1.19	128.01	415.57
7in Casing Intermediate	25.00	7945.00	7920.00	25.00	7488.14	0.00	0.00	118.02	415.50
6.125in Open Hole	7955.00	17314.00	9359.00	7488.56	7464.20	128.01	415.57	9481.24	415.76

WELLPATH COMPOSITION - Ref Wellbore: BARCLAY 27C-11HZ AWB <101-17314> Ref Wellpath: BARCLAY 27C-11HZ AWP

Start MD [ft]	End MD [ft]	Positional Uncertainty Model	Log Name/Comment	Wellbore
25.00	918.00	ISCWSA MWD, Rev. 2 (Standard)	CATHEDRAL MWD SURVEYS <101-918>	BARCLAY 27C-11HZ AWB <101-17314>
918.00	7912.00	NaviTrak (MAGCORR, IFR)	BHI NAVITRAK MWD+IFR 8 3/4" <998-7912>	BARCLAY 27C-11HZ AWB <101-17314>
7912.00	17258.00	NaviTrak (MAGCORR, IFR)	BHI NAVITRAK MWD+IFR 6 1/8" <7995-17258>	BARCLAY 27C-11HZ AWB <101-17314>
17258.00	17314.00	Blind Drilling (std)	Projection to bit	BARCLAY 27C-11HZ AWB <101-17314>

REFERENCE WELLPATH IDENTIFICATION

Operator	KERR-MCGEE OIL & GAS ONSHORE LP (LAMBERT STATE PLANE COORD)	Slot	SLOT#08 BARCLAY 27C-11HZ (577'FSL & 1679'FEL, SEC.14)
Area	COLORADO	Well	BARCLAY 27C-11HZ
Field	WELD COUNTY (KERR MCGEE)	Wellbore	BARCLAY 27C-11HZ AWB <101-17314>
Facility	SEC.14-T2N-R67W		

WELLPATH COMMENTS

MD [ft]	Inclination [°]	Azimuth [°]	TVD [ft]	Comment
25.00	0.000	241.400	25.00	TIE ON
101.00	0.100	241.400	101.00	BEGIN CATHEDRAL MWD SURVEYS
918.00	0.700	352.900	917.99	TIE ONTO CATHEDRAL MWD SURVEYS
998.00	0.500	344.600	997.99	BEGIN BHI MWD+IFR SURVEYS
7945.00	87.499	0.389	7488.14	7" CASING POINT
17258.00	90.060	356.400	7464.26	LAST BHI MWD+IFR SURVEY
17314.00	90.060	356.400	7464.20	PROJECTION TO BIT